

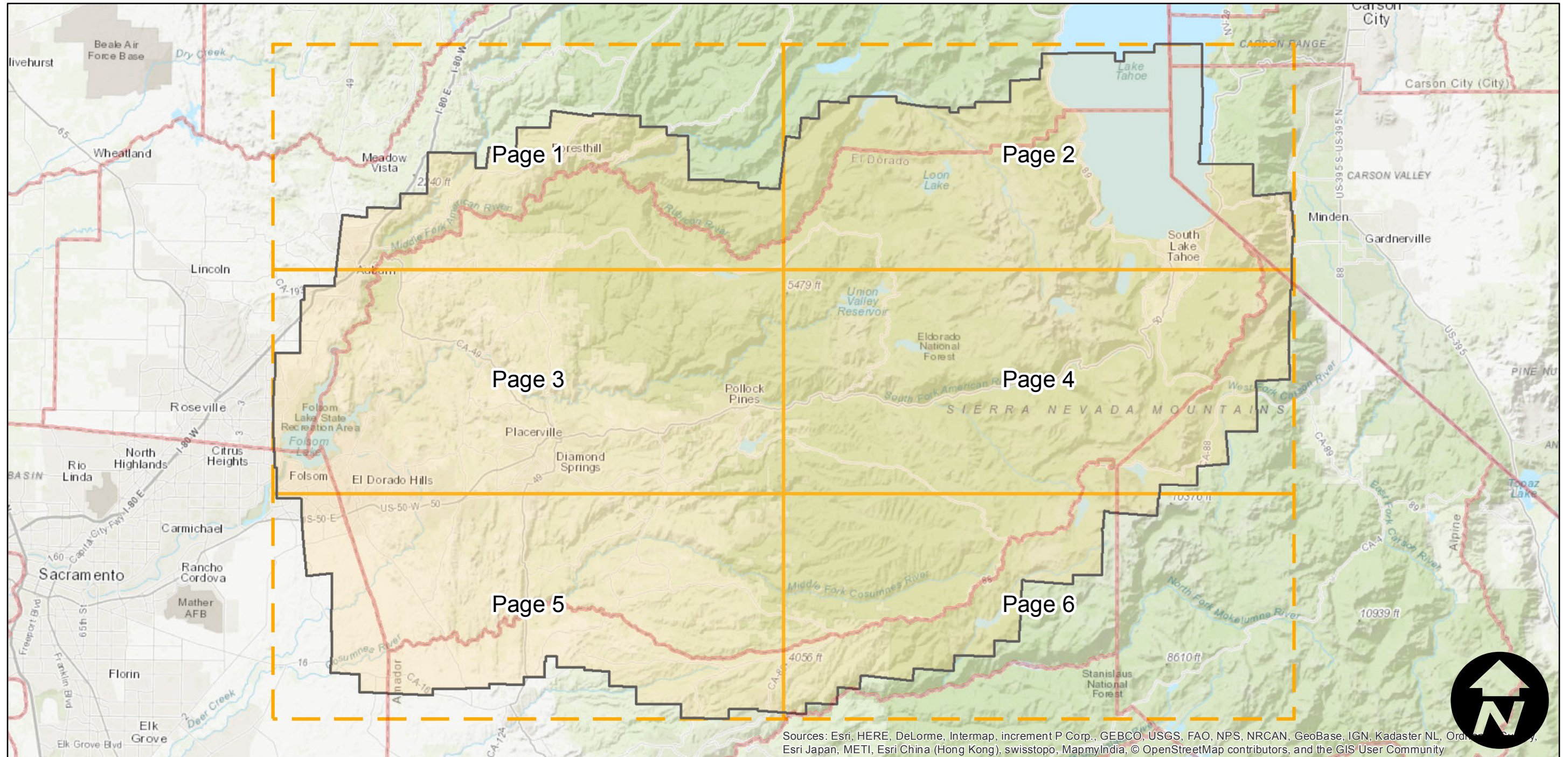
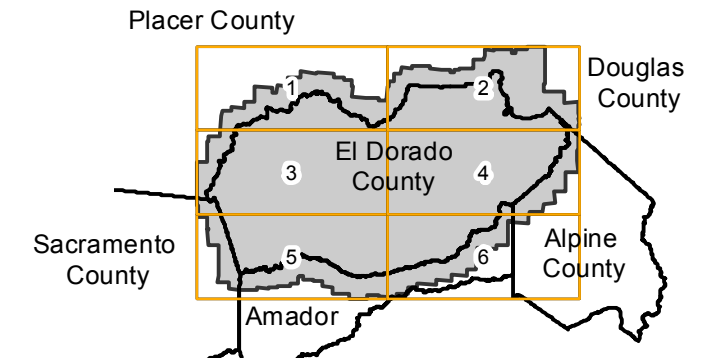
# DSC-1952

Counties: California: El Dorado, Placer, Alpine, Amador, Sacramento.  
Nevada: Douglas.  
Flight date(s): 01-01-1952 to 12-31-1952  
Scale: 1:20,000  
Overlap: 60%

Note: El Dorado County. Coverage extends into surrounding counties.

Complete Metadata: <http://www.library.ucsb.edu/map-imagery-lab/aerial-photography-information>

## FLIGHT LOCATION



Sources: Esri, HERE, DeLorme, Intermap, increment P Corp., GEBCO, USGS, FAO, NPS, NRCAN, GeoBase, IGN, Kadaster NL, Ordnance Survey, Esri Japan, METI, Esri China (Hong Kong), swisstopo, MapmyIndia, © OpenStreetMap contributors, and the GIS User Community



Index to Aerial Photography  
Page Key

Scale of this index: 1:465,000



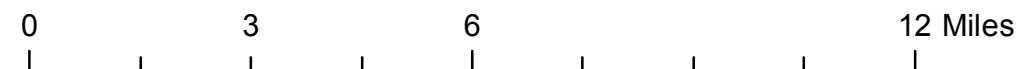
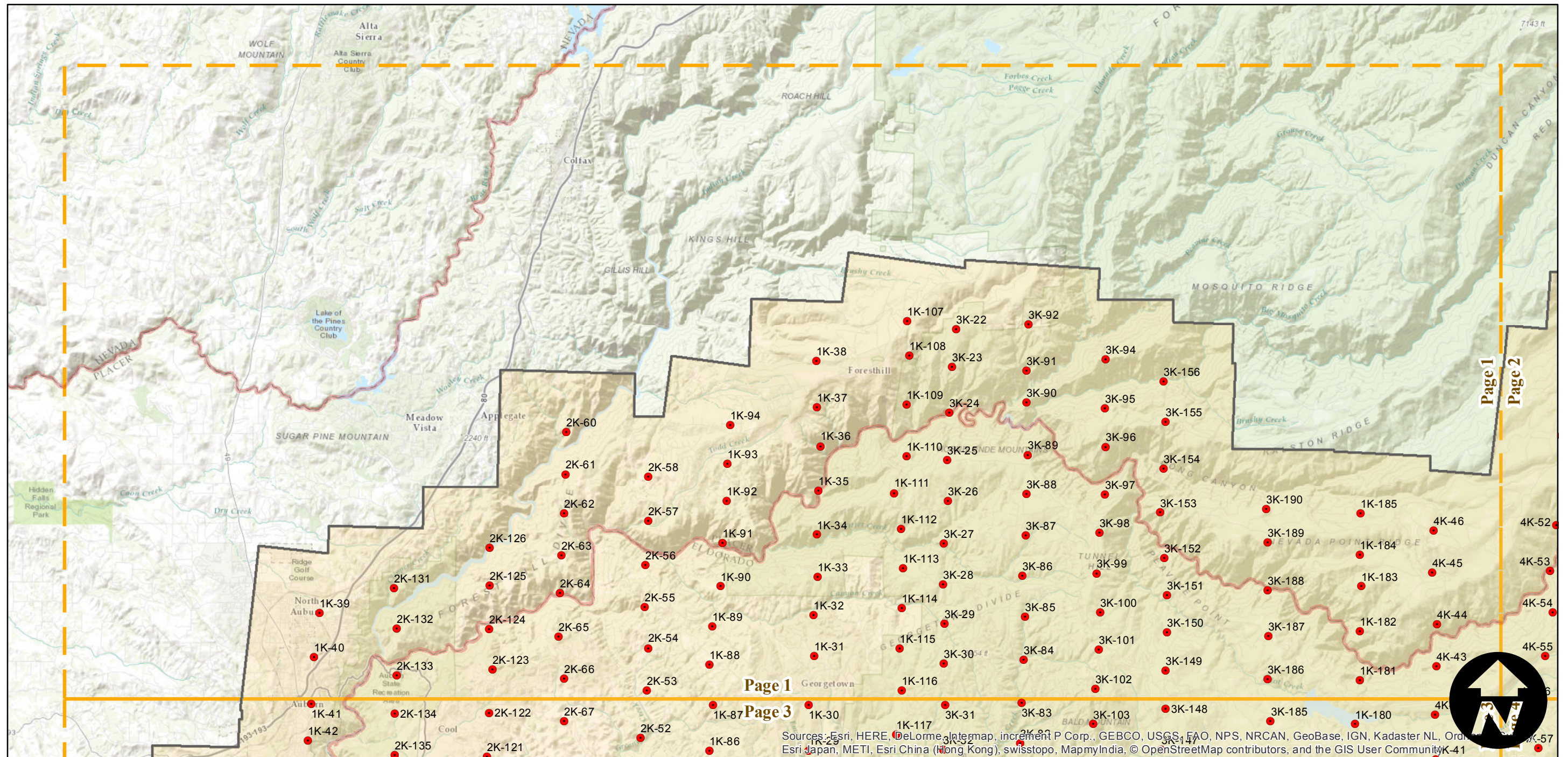
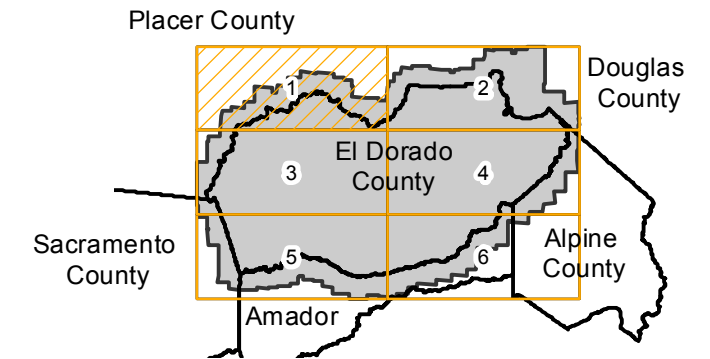
# DSC-1952

Counties: California: El Dorado, Placer, Alpine, Amador, Sacramento.  
 Nevada: Douglas.  
 Flight date(s): 01-01-1952 to 12-31-1952  
 Scale: 1:20,000  
 Overlap: 60%

Note: El Dorado County. Coverage extends into surrounding counties.

Complete Metadata: <http://www.library.ucsb.edu/map-imagery-lab/aerial-photography-information>

## FLIGHT LOCATION



Sources: Esri, HERE, DeLorme, Intermap, increment P Corp., GEBCO, USGS, FAO, NPS, NRCAN, GeoBase, IGN, Kadaster NL, Ordnance Survey, Esri Japan, METI, Esri China (Hong Kong), swisstopo, MapmyIndia, © OpenStreetMap contributors, and the GIS User Community



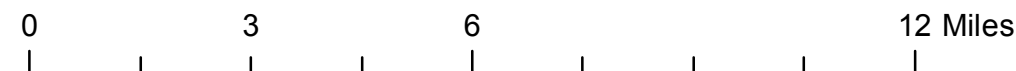
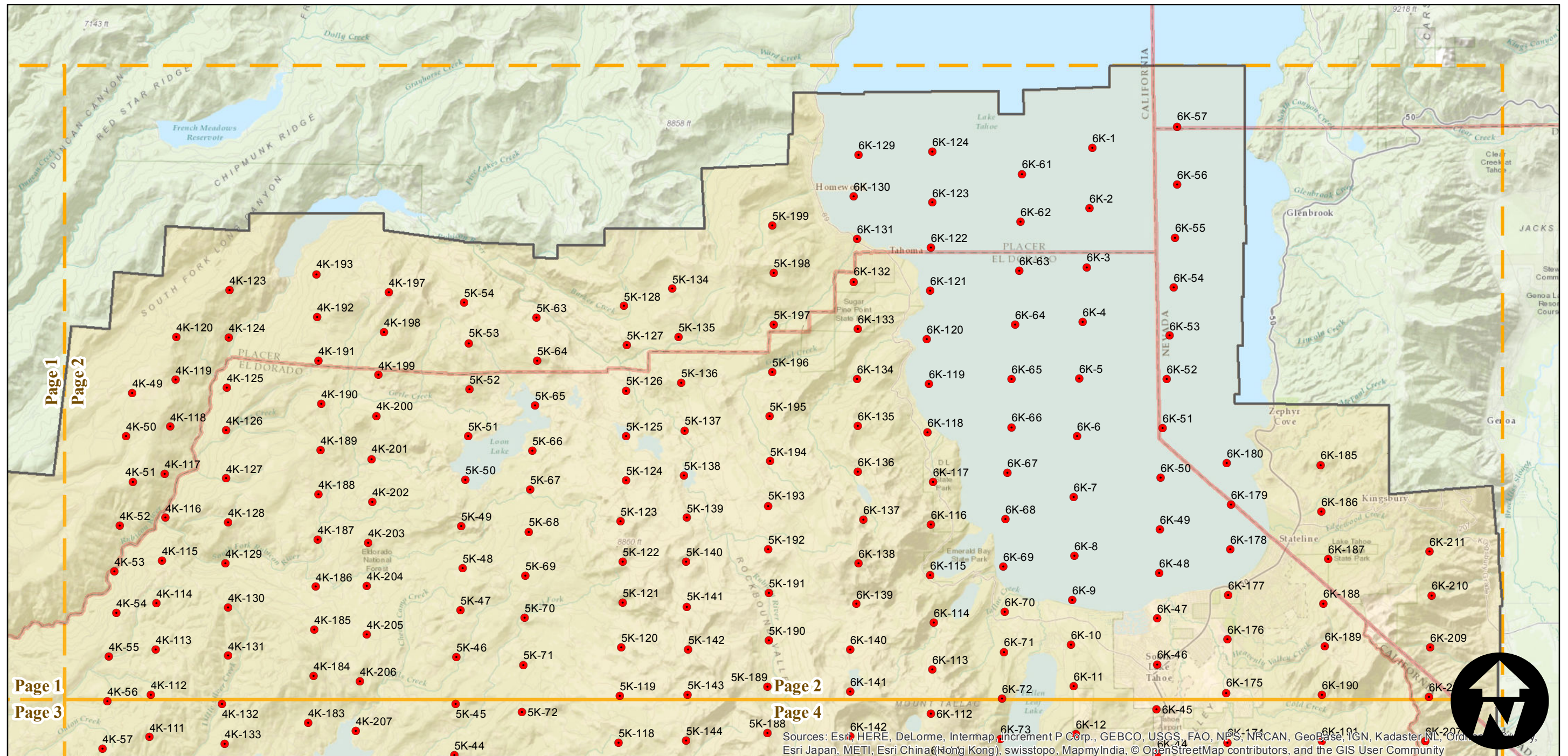
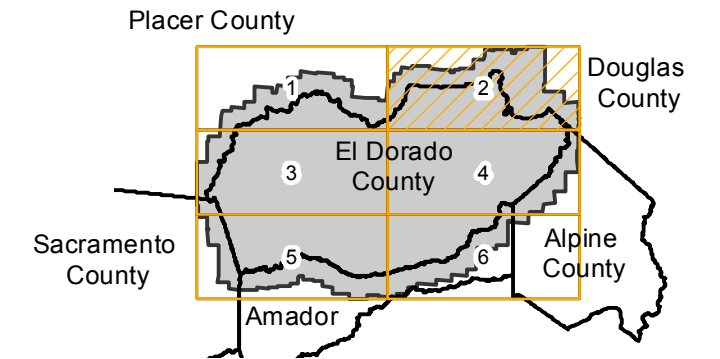
# DSC-1952

Counties: California: El Dorado, Placer, Alpine, Amador, Sacramento.  
 Nevada: Douglas.  
 Flight date(s): 01-01-1952 to 12-31-1952  
 Scale: 1:20,000  
 Overlap: 60%

Note: El Dorado County. Coverage extends into surrounding counties.

Complete Metadata: <http://www.library.ucsb.edu/map-imagery-lab/aerial-photography-information>

## FLIGHT LOCATION



Index to Aerial Photography  
 Page 2 of 6

Scale of this index: 1:165,000

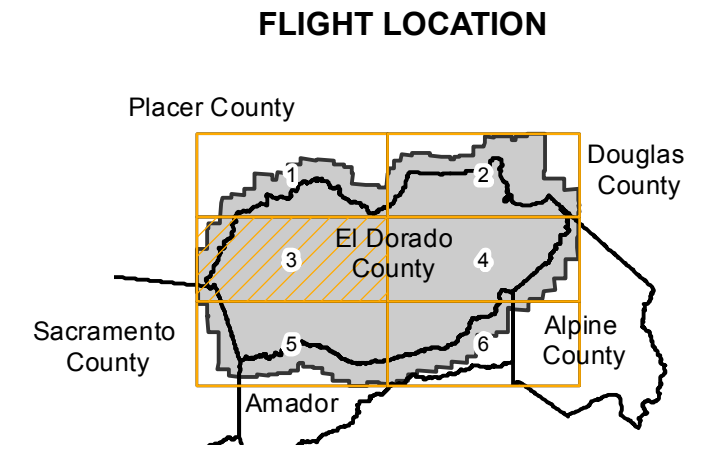
Sources: Esri, HERE, DeLorme, Intermap, increment P Corp., GEBCO, USGS, FAO, NPS, NRCAN, Geobase, IGN, Kadaster NL, Ordnance Survey, Esri Japan, METI, Esri China (Hong Kong), swisstopo, MapmyIndia, © OpenStreetMap contributors, and the GIS User Community



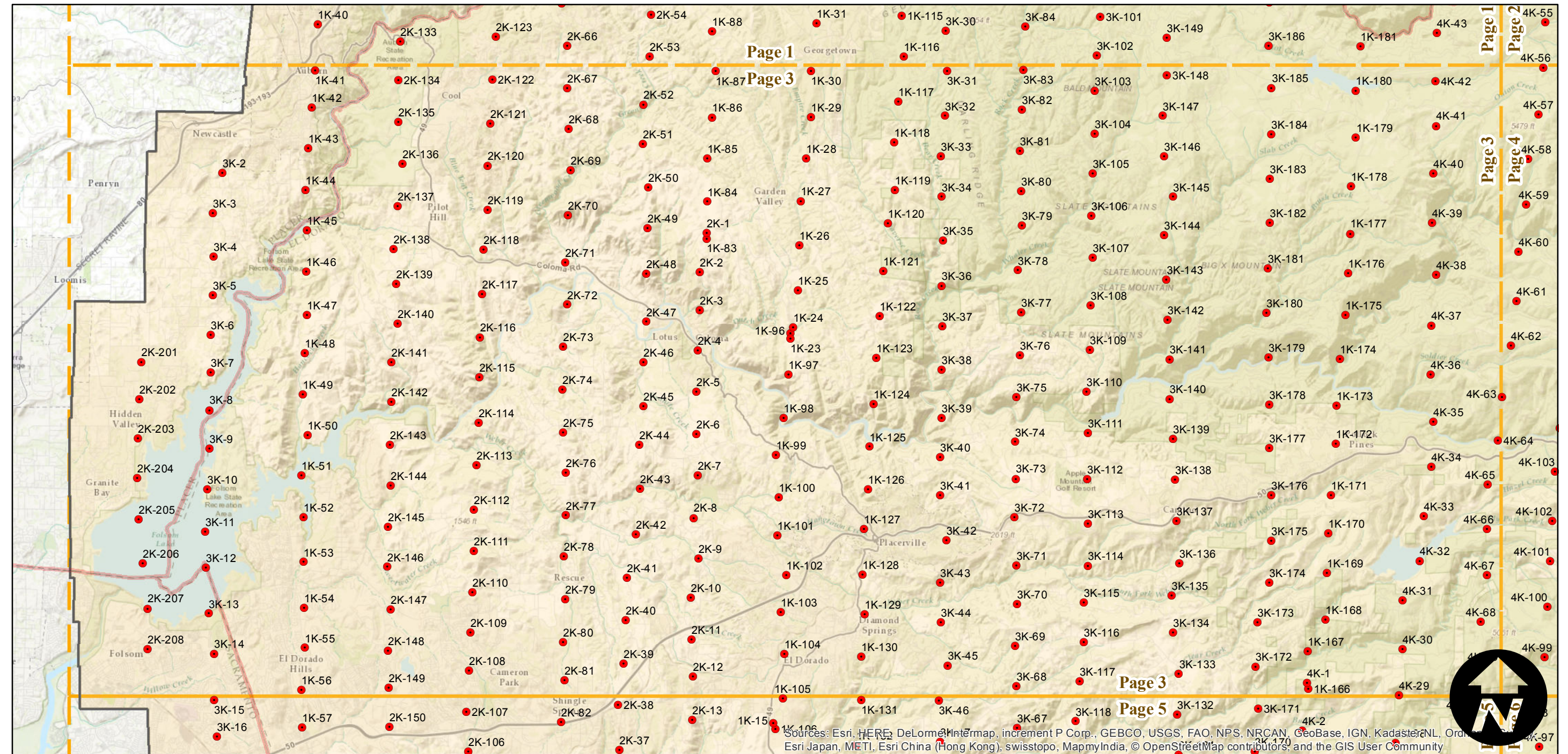
# DSC-1952

Counties: California: El Dorado, Placer, Alpine, Amador, Sacramento.  
Nevada: Douglas.  
Flight date(s): 01-01-1952 to 12-31-1952  
Scale: 1:20,000  
Overlap: 60%

Note: El Dorado County. Coverage extends into surrounding counties.



Complete Metadata: <http://www.library.ucsb.edu/map-imagery-lab/aerial-photography-information>



0 3 6 12 Miles

Index to Aerial Photography  
Page 3 of 6

Scale of this index: 1:165,000

Sources: Esri, HERE, DeLorme, Intermap, increment P Corp., GEBCO, USGS, FAO, NPS, NRCAN, GeoBase, IGN, Kadaster NL, Ordnance Survey, Esri Japan, METI, Esri China (Hong Kong), swisstopo, MapmyIndia, © OpenStreetMap contributors, and the GIS User Community

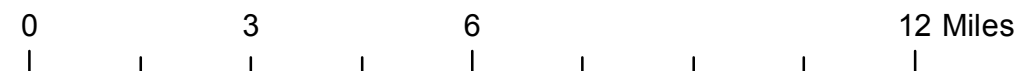
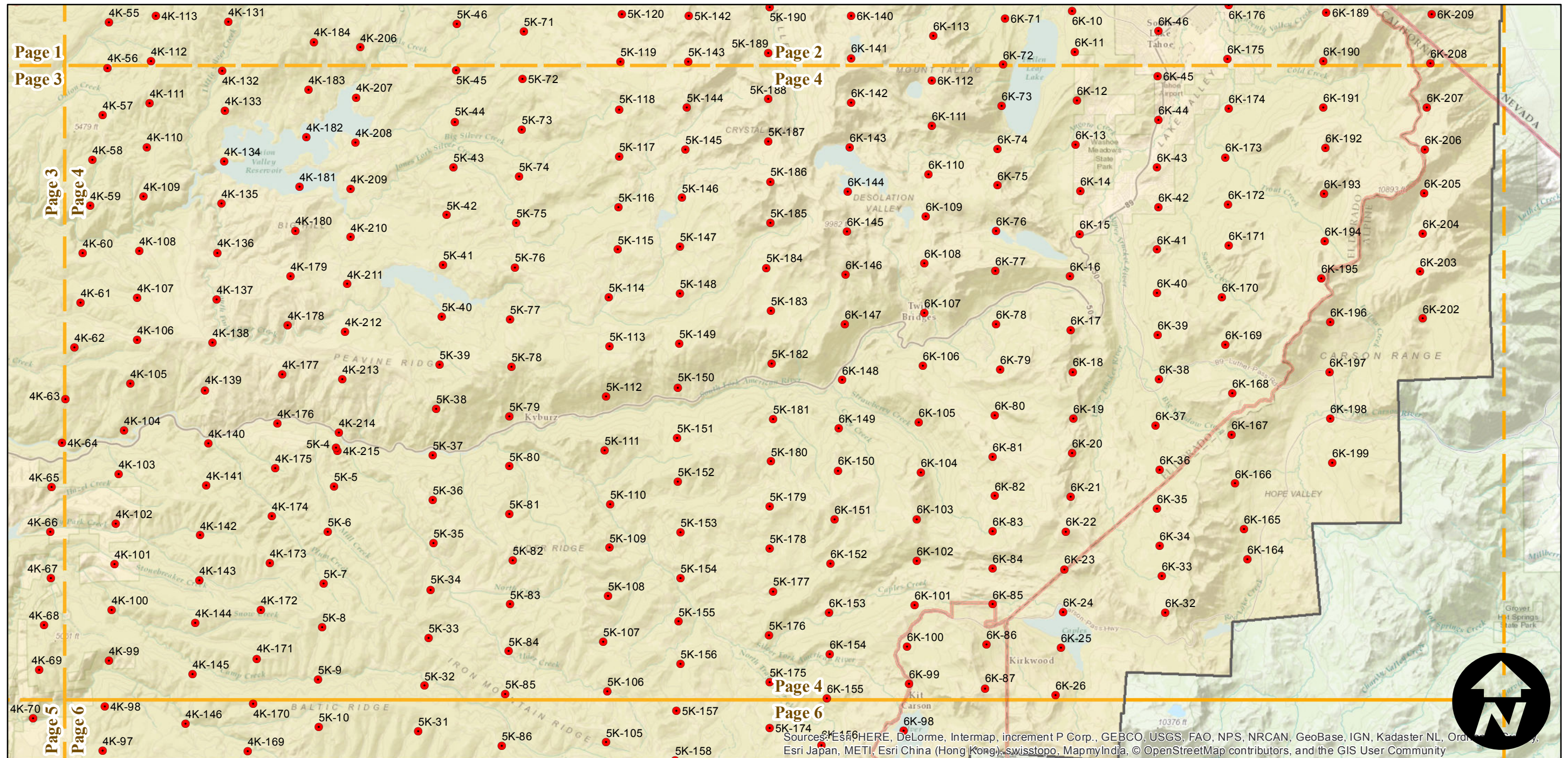
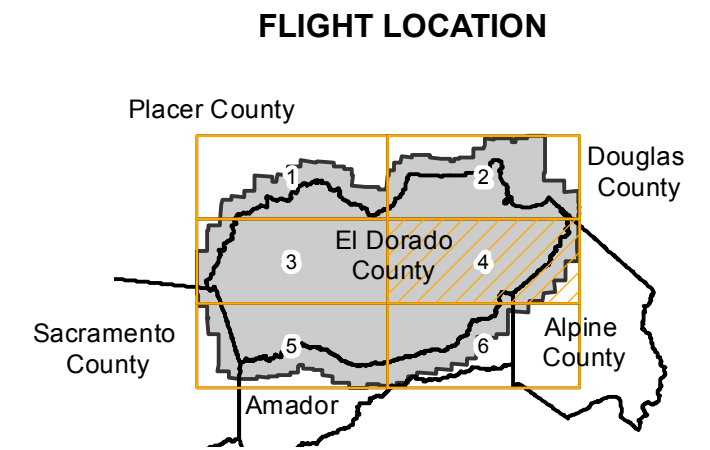


# DSC-1952

Counties: California: El Dorado, Placer, Alpine, Amador, Sacramento.  
Nevada: Douglas.  
Flight date(s): 01-01-1952 to 12-31-1952  
Scale: 1:20,000  
Overlap: 60%

Note: El Dorado County. Coverage extends into surrounding counties.

Complete Metadata: <http://www.library.ucsb.edu/map-imagery-lab/aerial-photography-information>



Sources: ESRI, HERE, DeLorme, Intermap, increment P Corp., GEBCO, USGS, FAO, NPS, NRCAN, GeoBase, IGN, Kadaster NL, Ordnance Survey, Esri Japan, METI, Esri China (Hong Kong), swisstopo, MapmyIndia, © OpenStreetMap contributors, and the GIS User Community



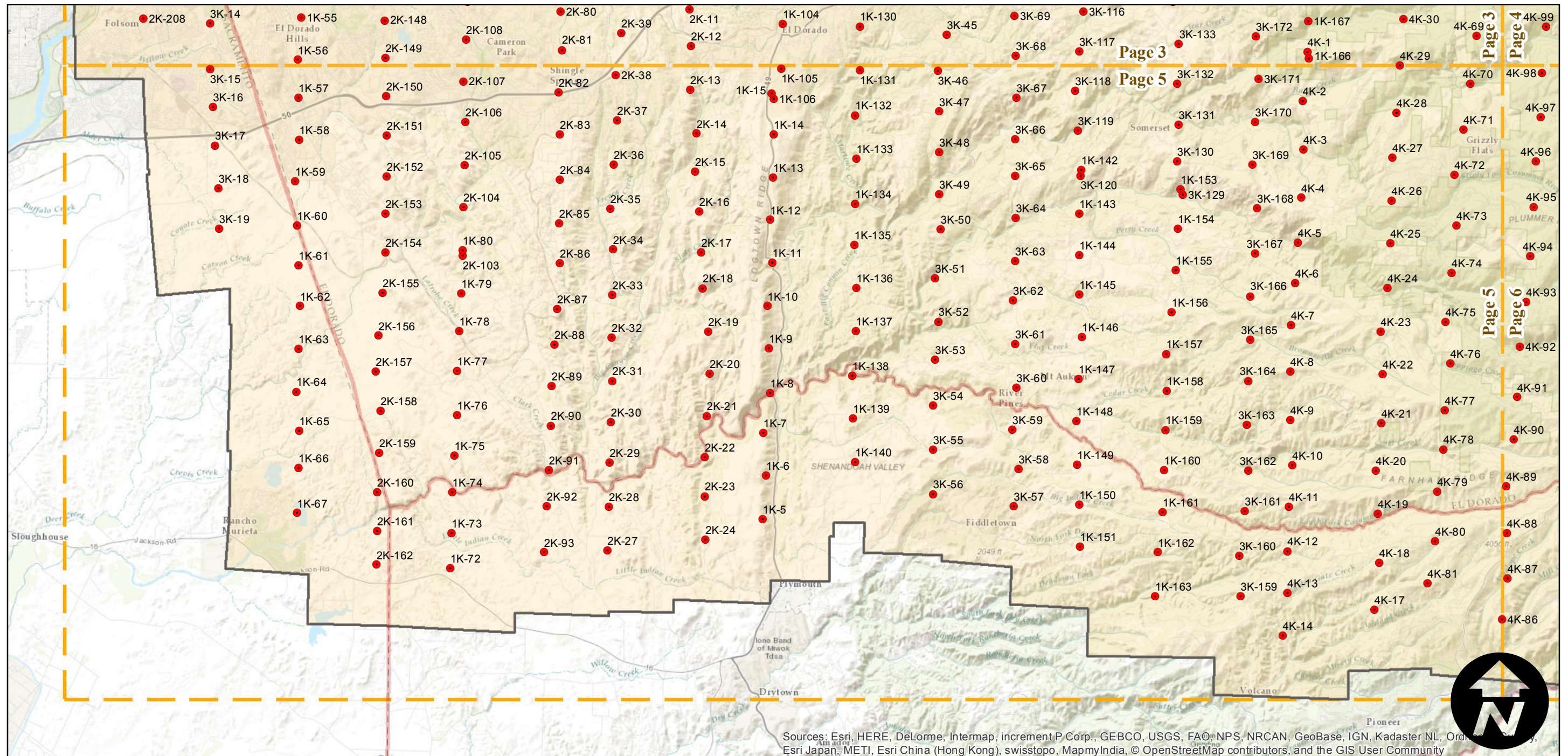
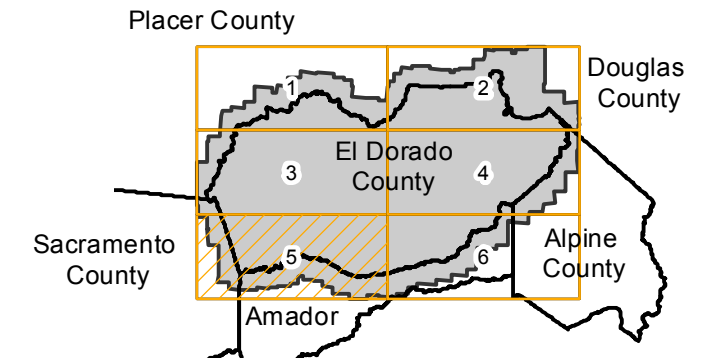
# DSC-1952

Counties: California: El Dorado, Placer, Alpine, Amador, Sacramento.  
Nevada: Douglas.  
Flight date(s): 01-01-1952 to 12-31-1952  
Scale: 1:20,000  
Overlap: 60%

Note: El Dorado County. Coverage extends into surrounding counties.

Complete Metadata: <http://www.library.ucsb.edu/map-imagery-lab/aerial-photography-information>

## FLIGHT LOCATION



Sources: Esri, HERE, DeLorme, Intermap, increment P Corp., GEBCO, USGS, FAO, NPS, NRCAN, GeoBase, IGN, Kadaster NL, Ordnance Survey, Esri Japan, METI, Esri China (Hong Kong), swisstopo, MapmyIndia, © OpenStreetMap contributors, and the GIS User Community

0 3 6 12 Miles

Index to Aerial Photography  
Page 5 of 6

Scale of this index: 1:165,000



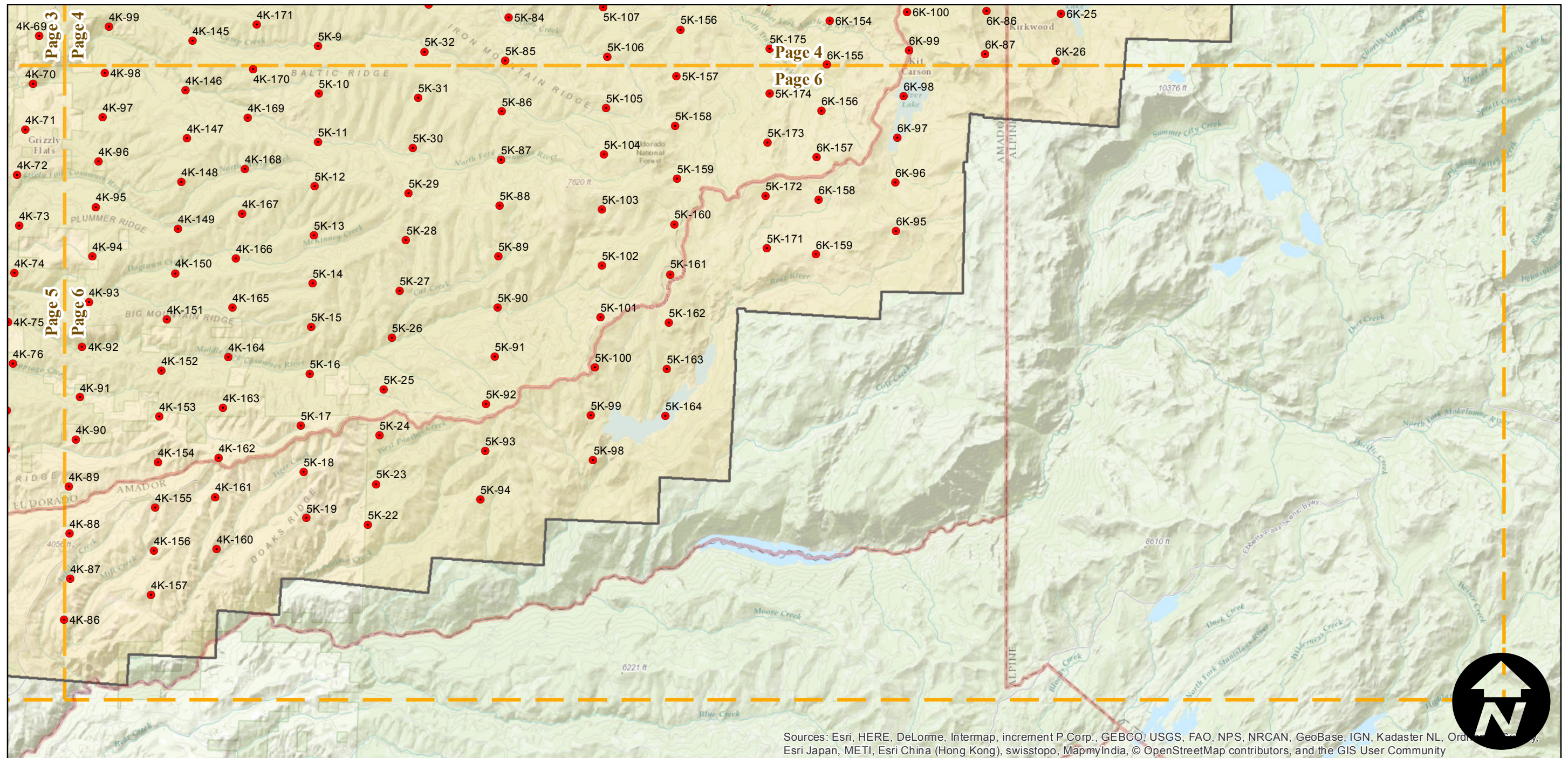
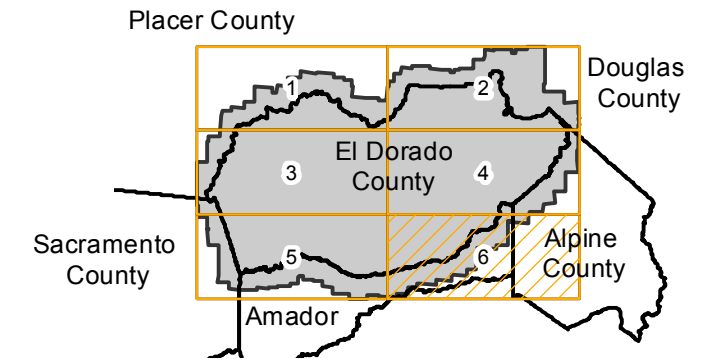
# DSC-1952

Counties: California: El Dorado, Placer, Alpine, Amador, Sacramento.  
Nevada: Douglas.  
Flight date(s): 01-01-1952 to 12-31-1952  
Scale: 1:20,000  
Overlap: 60%

Note: El Dorado County. Coverage extends into surrounding counties.

Complete Metadata: <http://www.library.ucsb.edu/map-imagery-lab/aerial-photography-information>

## FLIGHT LOCATION



Sources: Esri, HERE, DeLorme, Intermap, increment P Corp., GEBCO, USGS, FAO, NPS, NRCAN, GeoBase, IGN, Kadaster NL, Ordnance Survey, Esri Japan, METI, Esri China (Hong Kong), swisstopo, MapmyIndia, © OpenStreetMap contributors, and the GIS User Community

0 3 6 12 Miles

Index to Aerial Photography  
Page 6 of 6

Scale of this index: 1:165,000