

CVN-1952

Counties: Mendocino, Glenn, Humboldt, Lake, Sonoma, Tehama, Trinity

Flight date(s): 07-03-1952 to 08-15-1952

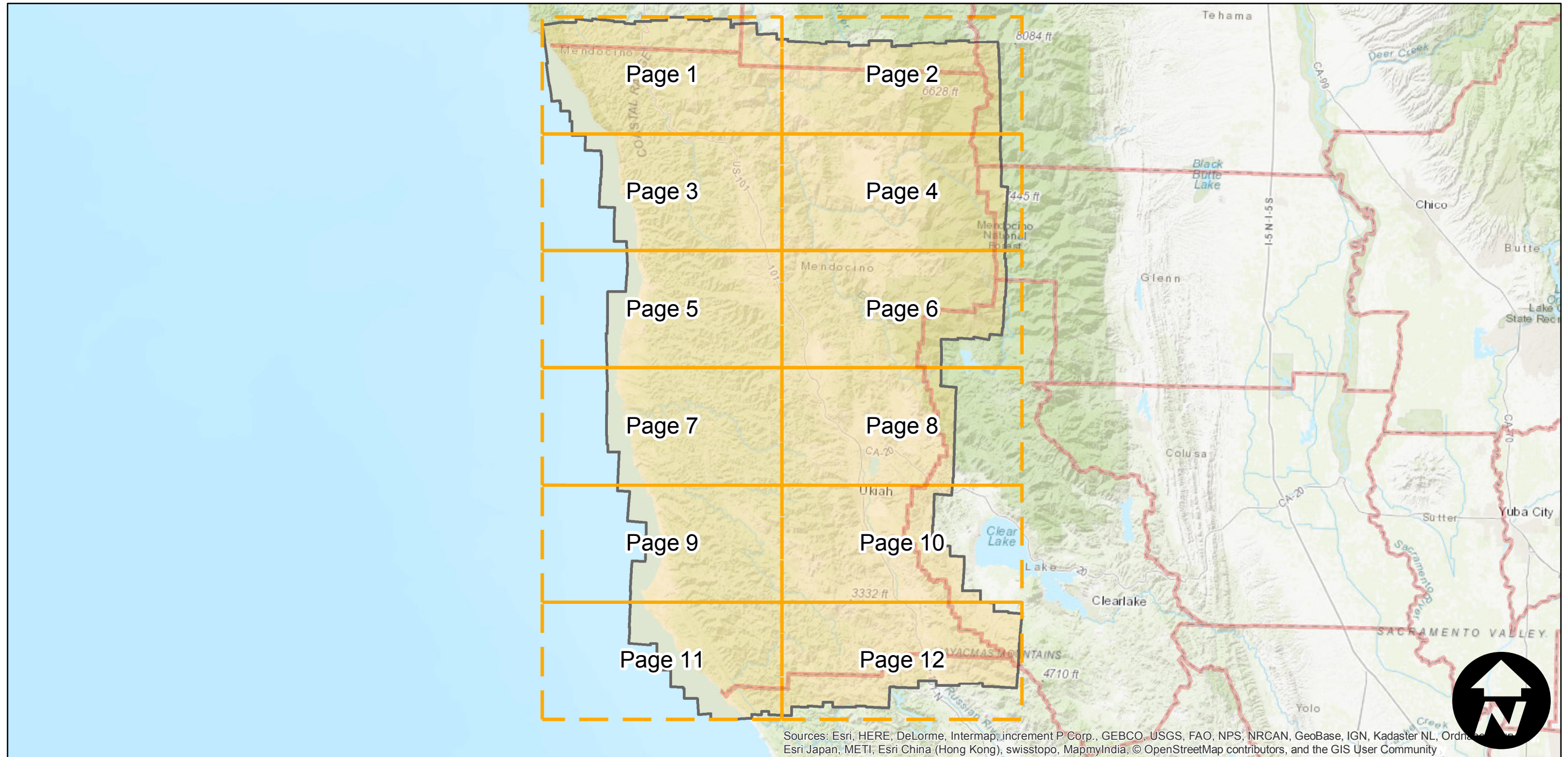
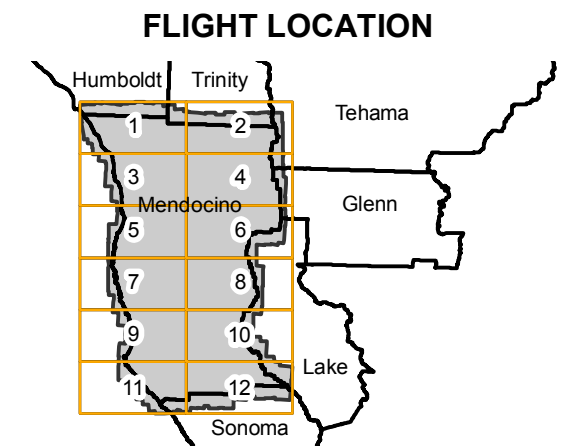
Scale: 1: 20,000

Overlap: 60%

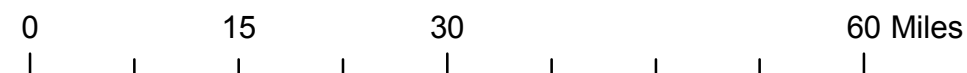
Complete Metadata:

<http://www.library.ucsb.edu/map-imagery-lab/aerial-photography-information>

Note: Coverage includes Spyrock, Rockport, Leggett, Marks Place, Point Arena, and Gualala.



Sources: Esri, HERE, DeLorme, Intermap, increment P Corp., GEBCO, USGS, FAO, NPS, NRCAN, GeoBase, IGN, Kadaster NL, Ordnance Survey, Esri Japan, METI, Esri China (Hong Kong), swisstopo, MapmyIndia, © OpenStreetMap contributors, and the GIS User Community



Index to Aerial Photography
Page Key

Scale of this index: 1:875,000

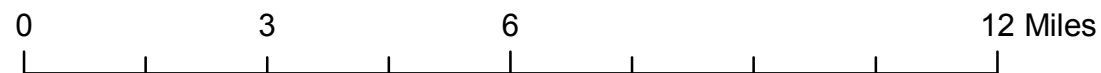
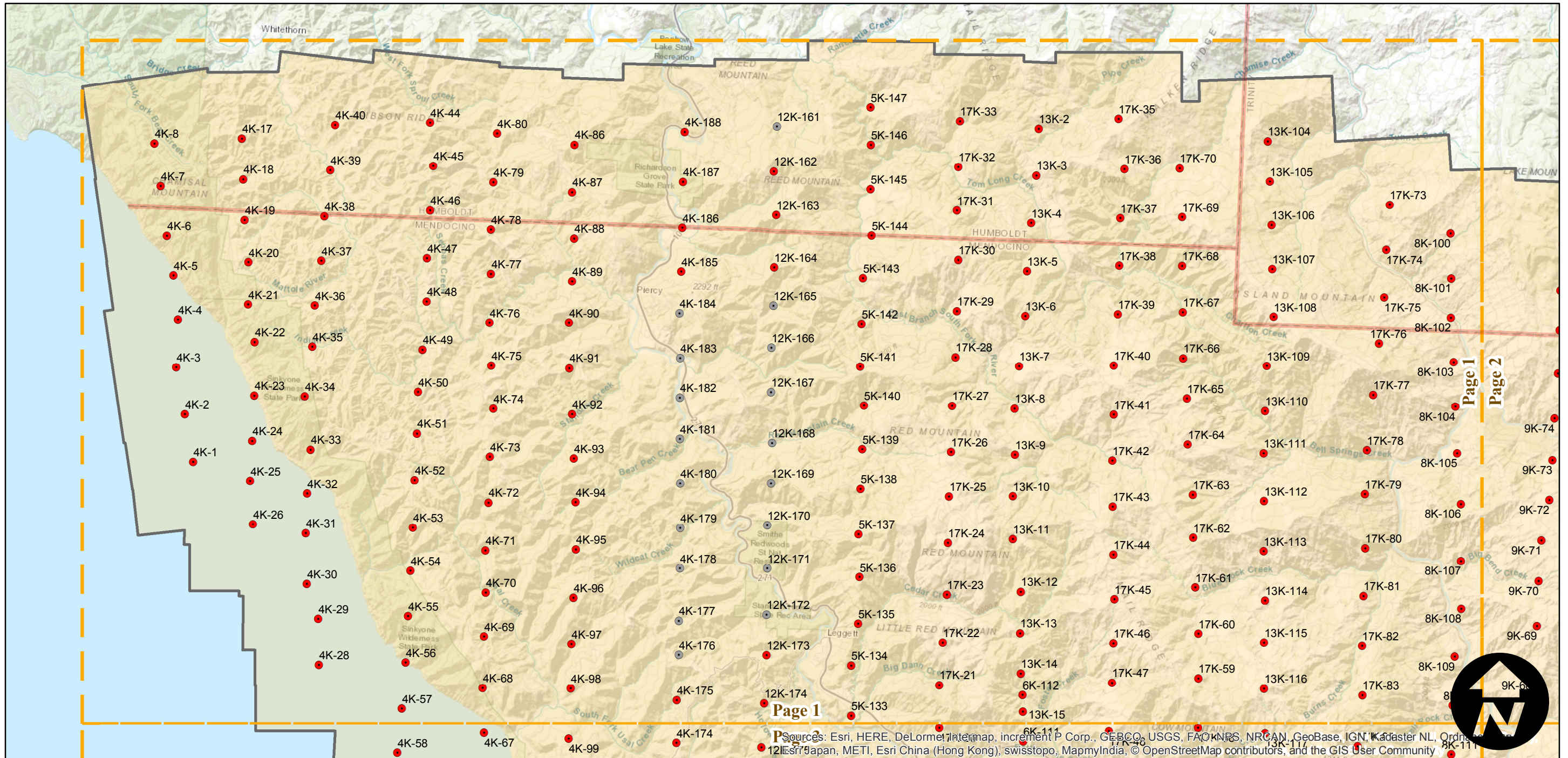
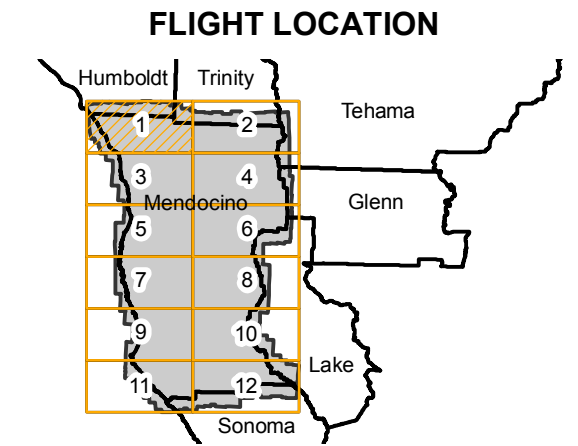
CVN-1952

Counties: Mendocino, Glenn, Humboldt, Lake, Sonoma, Tehama, Trinity
 Flight date(s): 07-03-1952 to 08-15-1952
 Scale: 1: 20,000
 Overlap: 60%

Complete Metadata:
<http://www.library.ucsb.edu/map-imagery-lab/aerial-photography-information>

Note: Coverage includes Spyrock, Rockport, Leggett, Marks Place, Point Arena, and Gualala.

- MIL owns frame
- MIL does not own frame



Index to Aerial Photography
 Page 1 of 12

Scale of this index: 1:150,000

Sources: Esri, HERE, DeLorme, Intermap, increment P Corp., GEBCO, USGS, FAO, NRS, NRCAN, GeoBase, IGN, Kadaster NL, Ordnance Survey, Esri Japan, METI, Esri China (Hong Kong), swisstopo, MapmyIndia, © OpenStreetMap contributors, and the GIS User Community

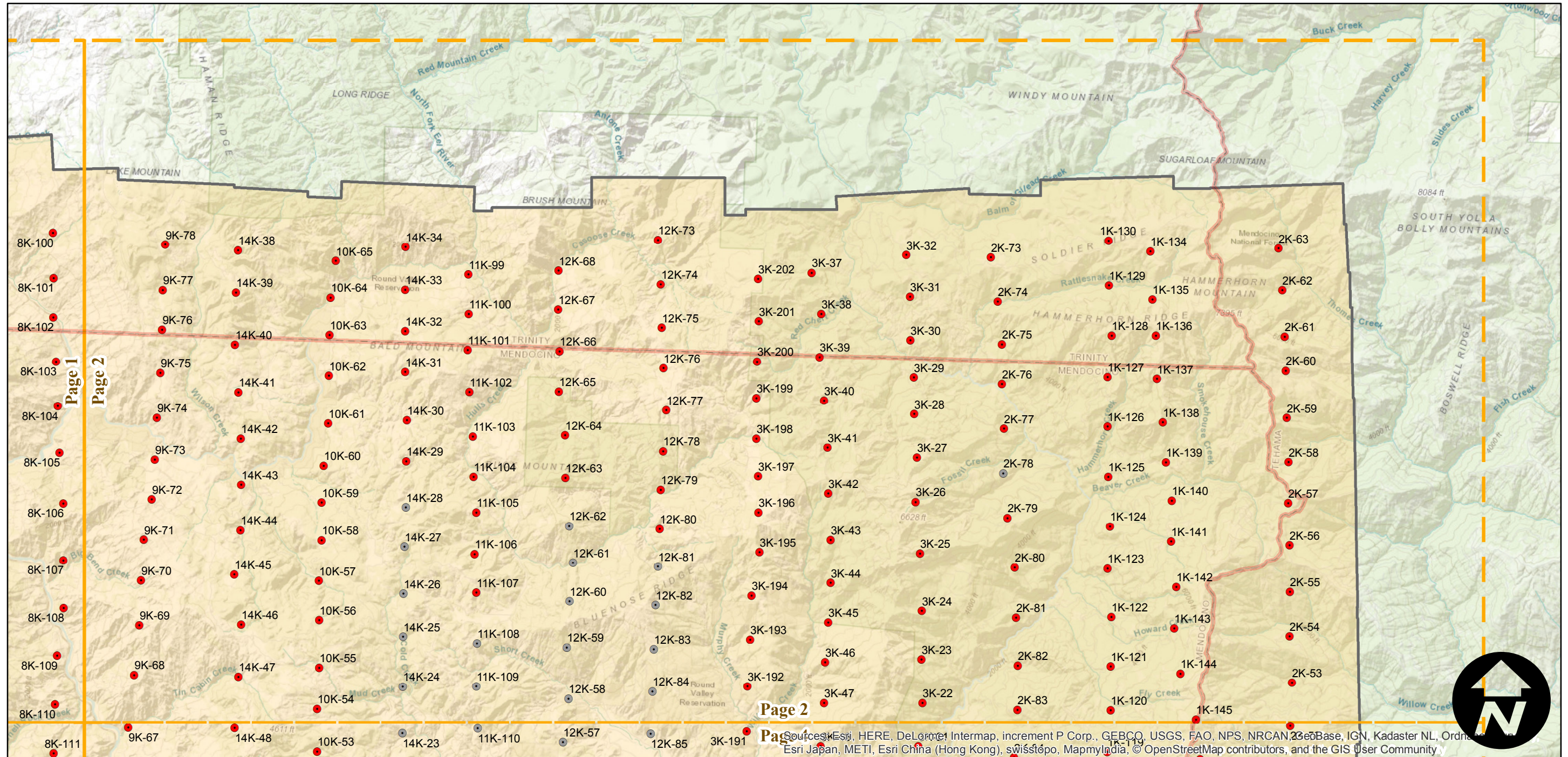
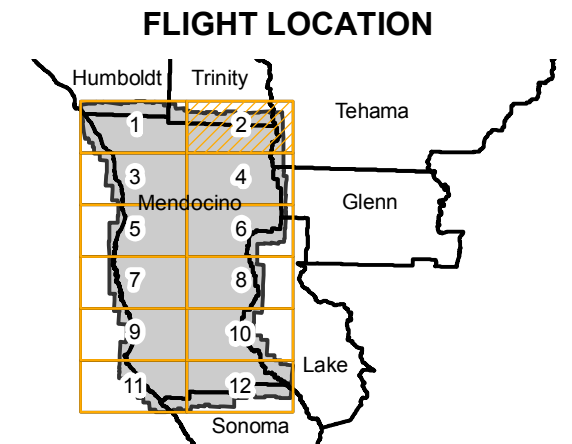
CVN-1952

Counties: Mendocino, Glenn, Humboldt, Lake, Sonoma, Tehama, Trinity
 Flight date(s): 07-03-1952 to 08-15-1952
 Scale: 1: 20,000
 Overlap: 60%

Complete Metadata:
<http://www.library.ucsb.edu/map-imagery-lab/aerial-photography-information>

Note: Coverage includes Spyrock, Rockport, Leggett, Marks Place, Point Arena, and Gualala.

- MIL owns frame
- MIL does not own frame



Index to Aerial Photography
 Page 2 of 12

Scale of this index: 1:150,000

Source: Esri, HERE, DeLorme, Intermap, increment P Corp., GEBCO, USGS, FAO, NPS, NRCAN, GeoBase, IGN, Kadaster NL, Ordnance Survey, Esri Japan, METI, Esri China (Hong Kong), swisstopo, MapmyIndia, © OpenStreetMap contributors, and the GIS User Community

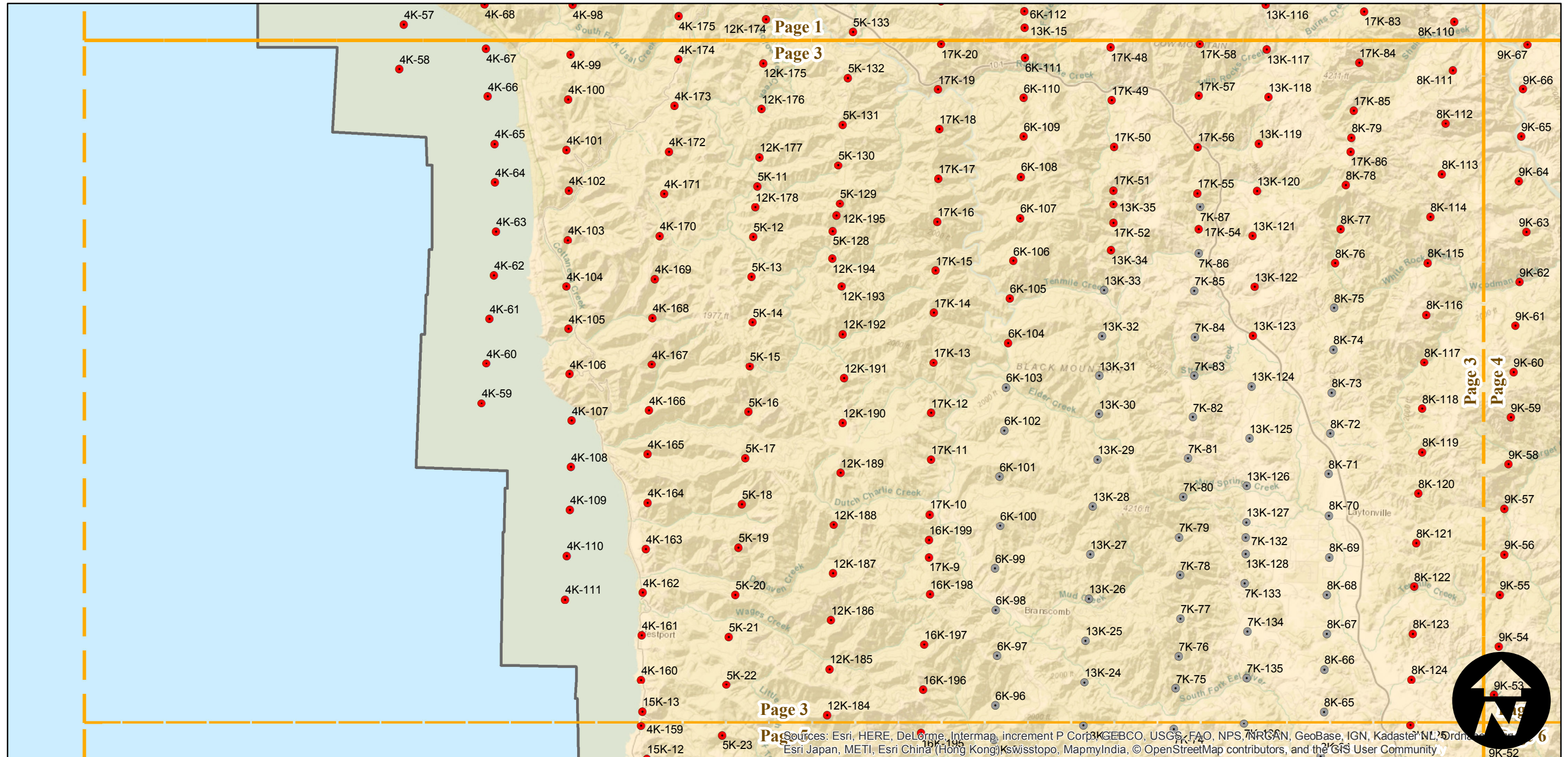
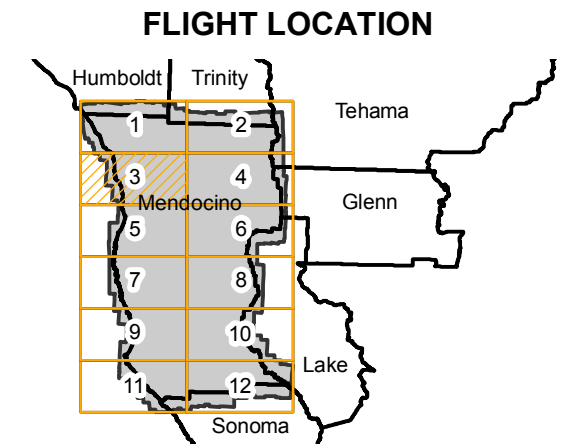
CVN-1952

Counties: Mendocino, Glenn, Humboldt, Lake, Sonoma, Tehama, Trinity
 Flight date(s): 07-03-1952 to 08-15-1952
 Scale: 1: 20,000
 Overlap: 60%

Complete Metadata:
<http://www.library.ucsb.edu/map-imagery-lab/aerial-photography-information>

Note: Coverage includes Spyrock, Rockport, Leggett, Marks Place, Point Arena, and Gualala.

- MIL owns frame
- MIL does not own frame



Sources: Esri, HERE, DeLorme, Intermap, increment P Corp., GEBCO, USGS, FAO, NPS, NRCAN, GeoBase, IGN, Kadaster NL, Ordnance Survey, Esri Japan, METI, Esri China (Hong Kong), Swisstopo, MapmyIndia, © OpenStreetMap contributors, and the GIS User Community

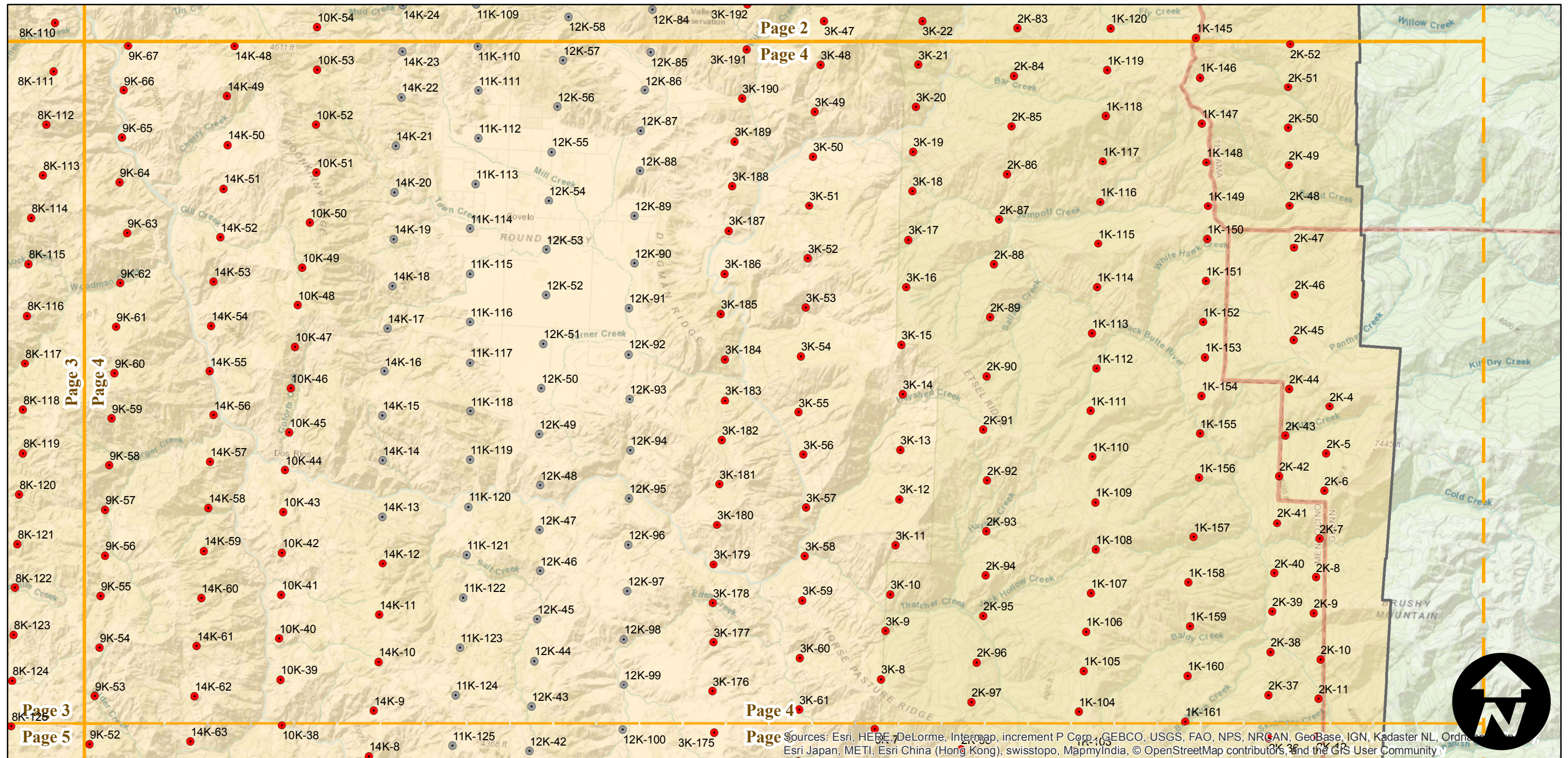
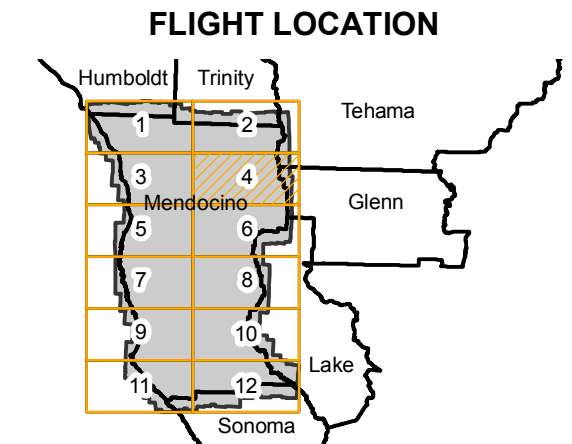
CVN-1952

Counties: Mendocino, Glenn, Humboldt, Lake, Sonoma, Tehama, Trinity
 Flight date(s): 07-03-1952 to 08-15-1952
 Scale: 1: 20,000
 Overlap: 60%

Complete Metadata:
<http://www.library.ucsb.edu/map-imagery-lab/aerial-photography-information>

Note: Coverage includes Spyrock, Rockport, Leggett, Marks Place, Point Arena, and Gualala.

- MIL owns frame
- MIL does not own frame



0 3 6 12 Miles

Index to Aerial Photography
 Page 4 of 12

Scale of this index: 1:150,000

Sources: Esri, HERE, DeLorme, Intermap, increment P Corp., GEBCO, USGS, FAO, NPS, NRCAN, GeoBase, IGN, Kadaster NL, Ordnance Survey, Esri Japan, METI, Esri China (Hong Kong), swisstopo, MapmyIndia, © OpenStreetMap contributors, and the GIS User Community

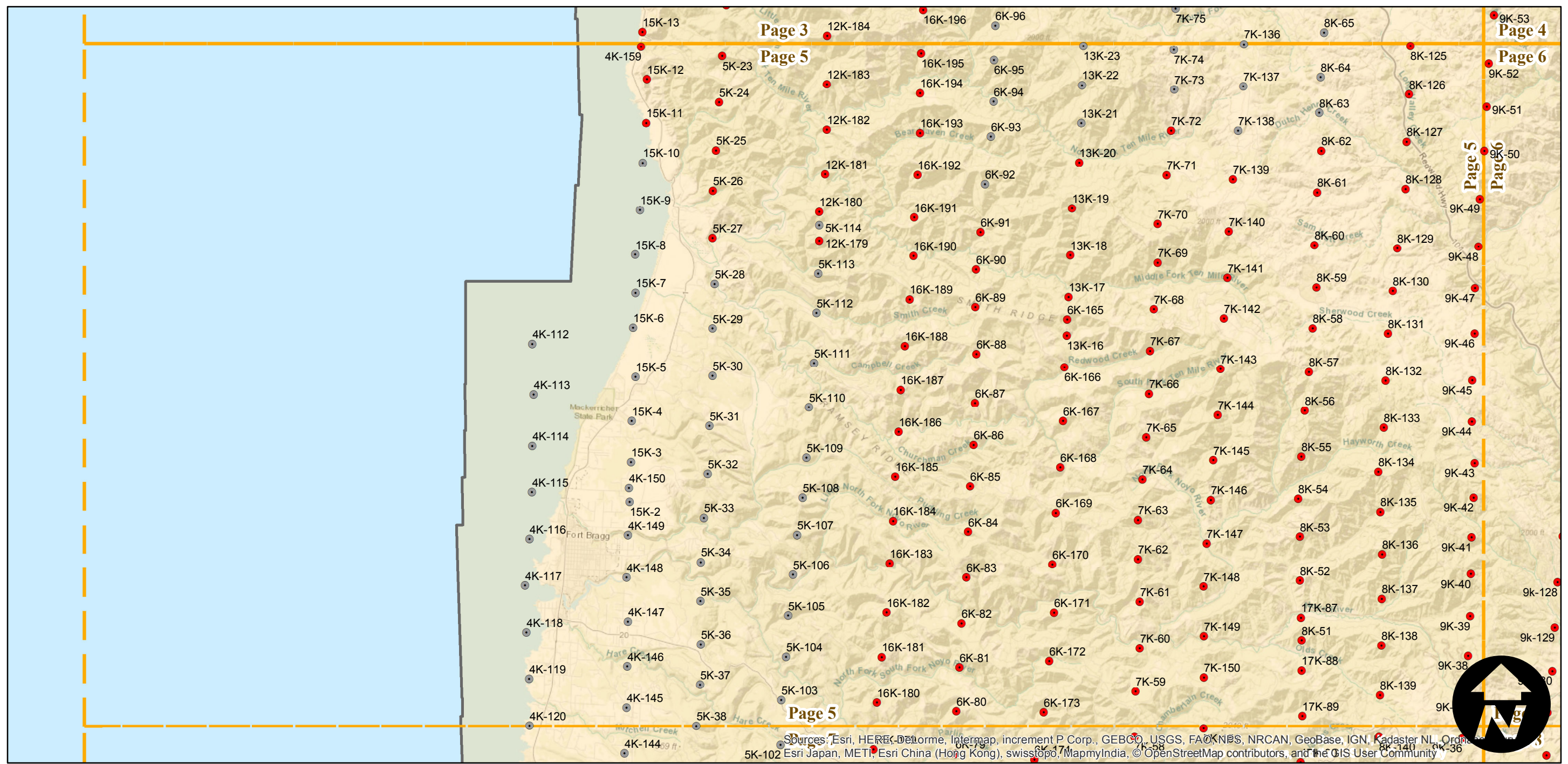
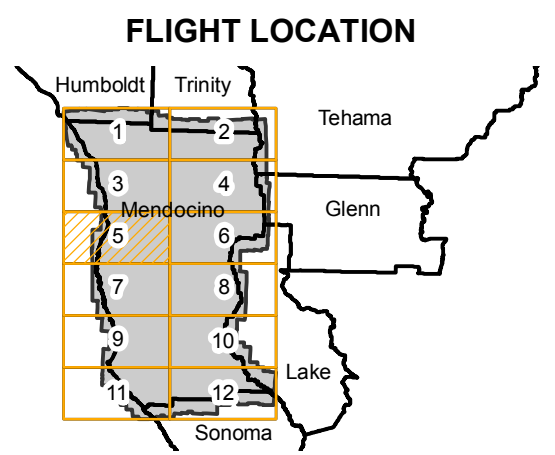
CVN-1952

Counties: Mendocino, Glenn, Humboldt, Lake, Sonoma, Tehama, Trinity
 Flight date(s): 07-03-1952 to 08-15-1952
 Scale: 1: 20,000
 Overlap: 60%

Complete Metadata:
<http://www.library.ucsb.edu/map-imagery-lab/aerial-photography-information>

Note: Coverage includes Spyrock, Rockport, Leggett, Marks Place, Point Arena, and Gualala.

- MIL owns frame
- MIL does not own frame



0 3 6 12 Miles

Index to Aerial Photography
 Page 5 of 12

Scale of this index: 1:150,000

Sources: Esri, HERE, DeLorme, Intermap, increment P Corp., GEBCO, USGS, FAO, NPS, NRCAN, GeoBase, IGN, Kadaster NL, Ordnance Survey, Esri Japan, METI, Esri China (Hong Kong), swisstopo, MapmyIndia, © OpenStreetMap contributors, and the GIS User Community

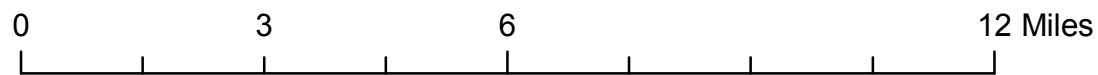
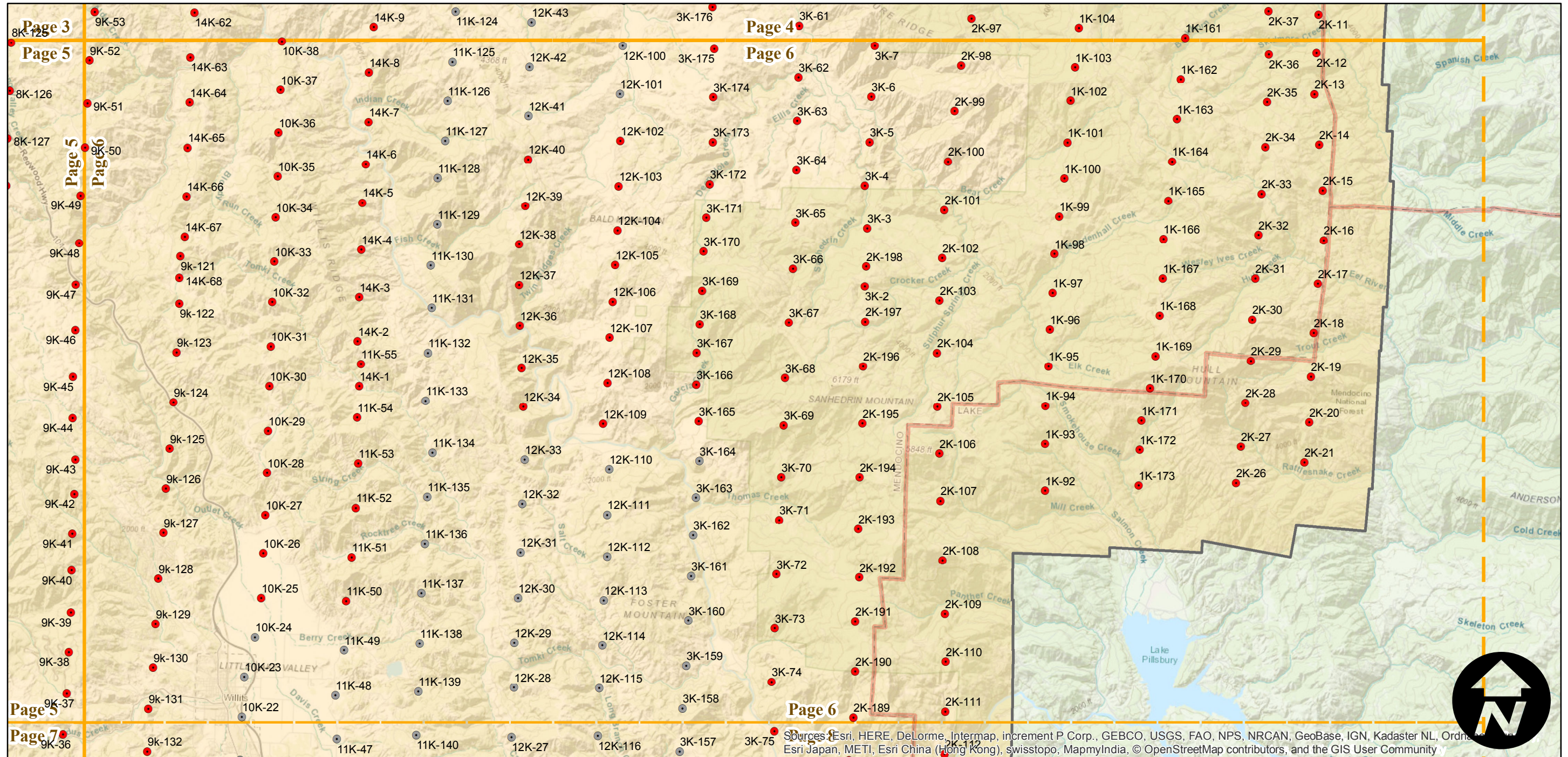
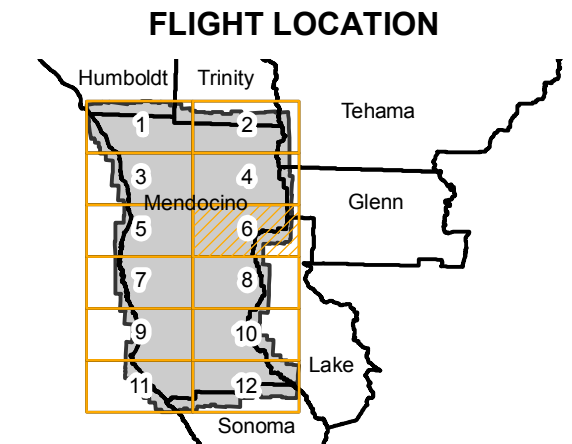
CVN-1952

Counties: Mendocino, Glenn, Humboldt, Lake, Sonoma, Tehama, Trinity
 Flight date(s): 07-03-1952 to 08-15-1952
 Scale: 1: 20,000
 Overlap: 60%

Complete Metadata:
<http://www.library.ucsb.edu/map-imagery-lab/aerial-photography-information>

Note: Coverage includes Spyrock, Rockport, Leggett, Marks Place, Point Arena, and Gualala.

- MIL owns frame
- MIL does not own frame



Index to Aerial Photography
 Page 6 of 12

Scale of this index: 1:150,000



Sources: Esri, HERE, DeLorme, Intermap, increment P Corp., GEBCO, USGS, FAO, NPS, NRCAN, GeoBase, IGN, Kadaster NL, Ordnance Survey, Esri Japan, METI, Esri China (Hong Kong), swisstopo, MapmyIndia, © OpenStreetMap contributors, and the GIS User Community

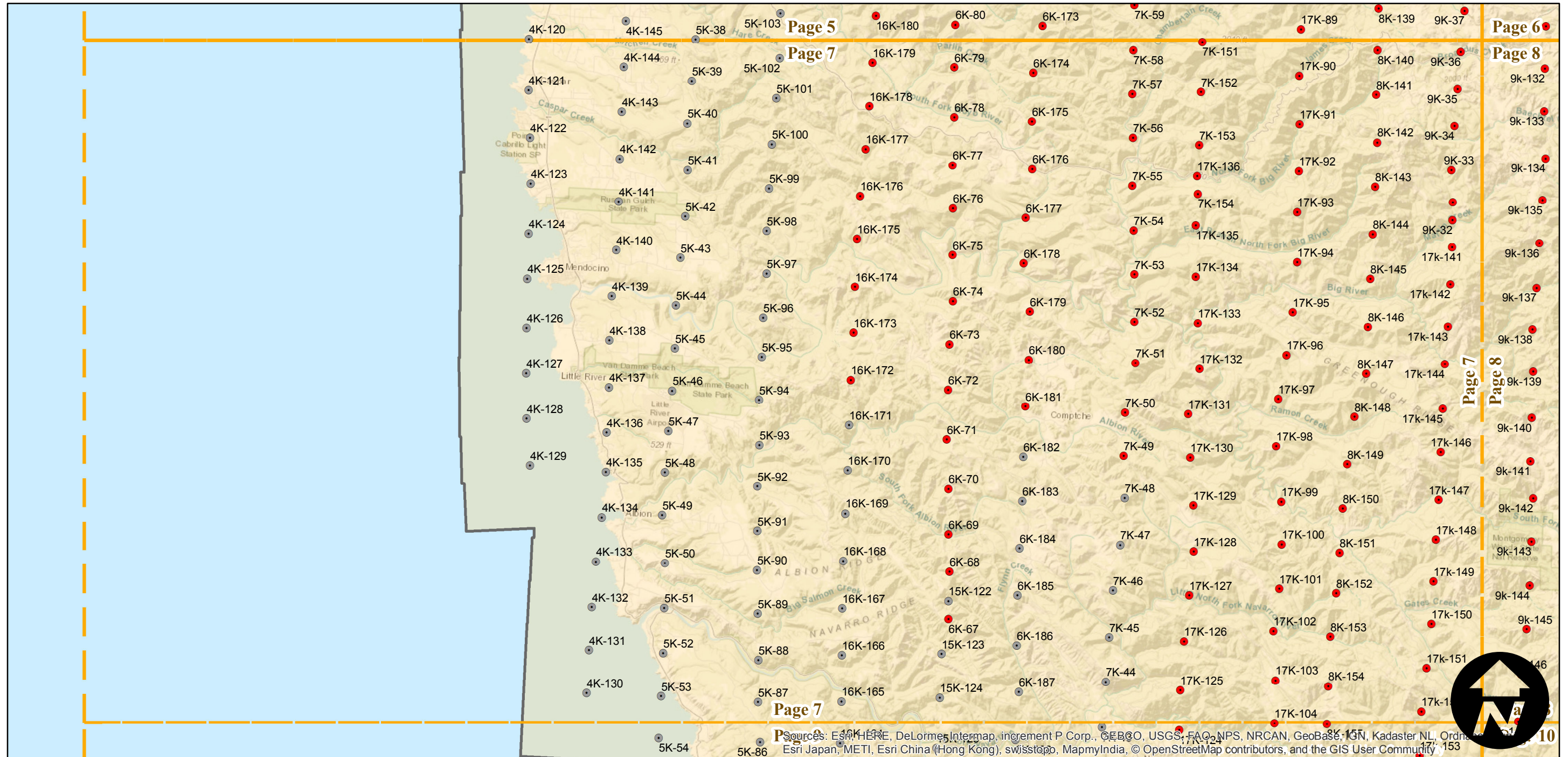
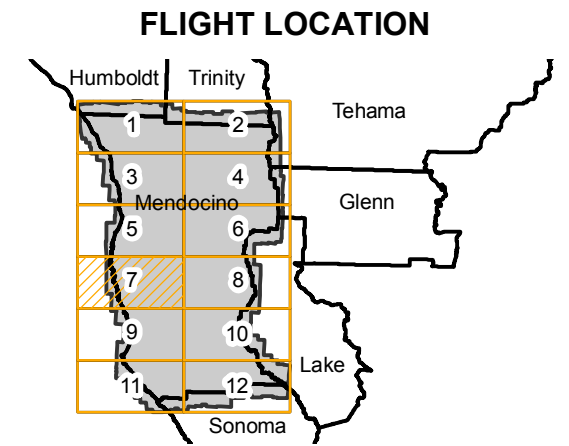
CVN-1952

Counties: Mendocino, Glenn, Humboldt, Lake, Sonoma, Tehama, Trinity
Flight date(s): 07-03-1952 to 08-15-1952
Scale: 1: 20,000
Overlap: 60%

Complete Metadata:
<http://www.library.ucsb.edu/map-imagery-lab/aerial-photography-information>

Note: Coverage includes Spyrock, Rockport, Leggett, Marks Place, Point Arena, and Gualala.

- MIL owns frame
- MIL does not own frame



0 3 6 12 Miles

Index to Aerial Photography
Page 7 of 12

Scale of this index: 1:150,000

Sources: Esri, HERE, DeLorme, Intermap, increment P Corp., GEBCO, USGS, FAO, NPS, NRCAN, GeoBase, IGN, Kadaster NL, Ordnance Survey, Esri Japan, METI, Esri China (Hong Kong), swisstopo, MapmyIndia, © OpenStreetMap contributors, and the GIS User Community

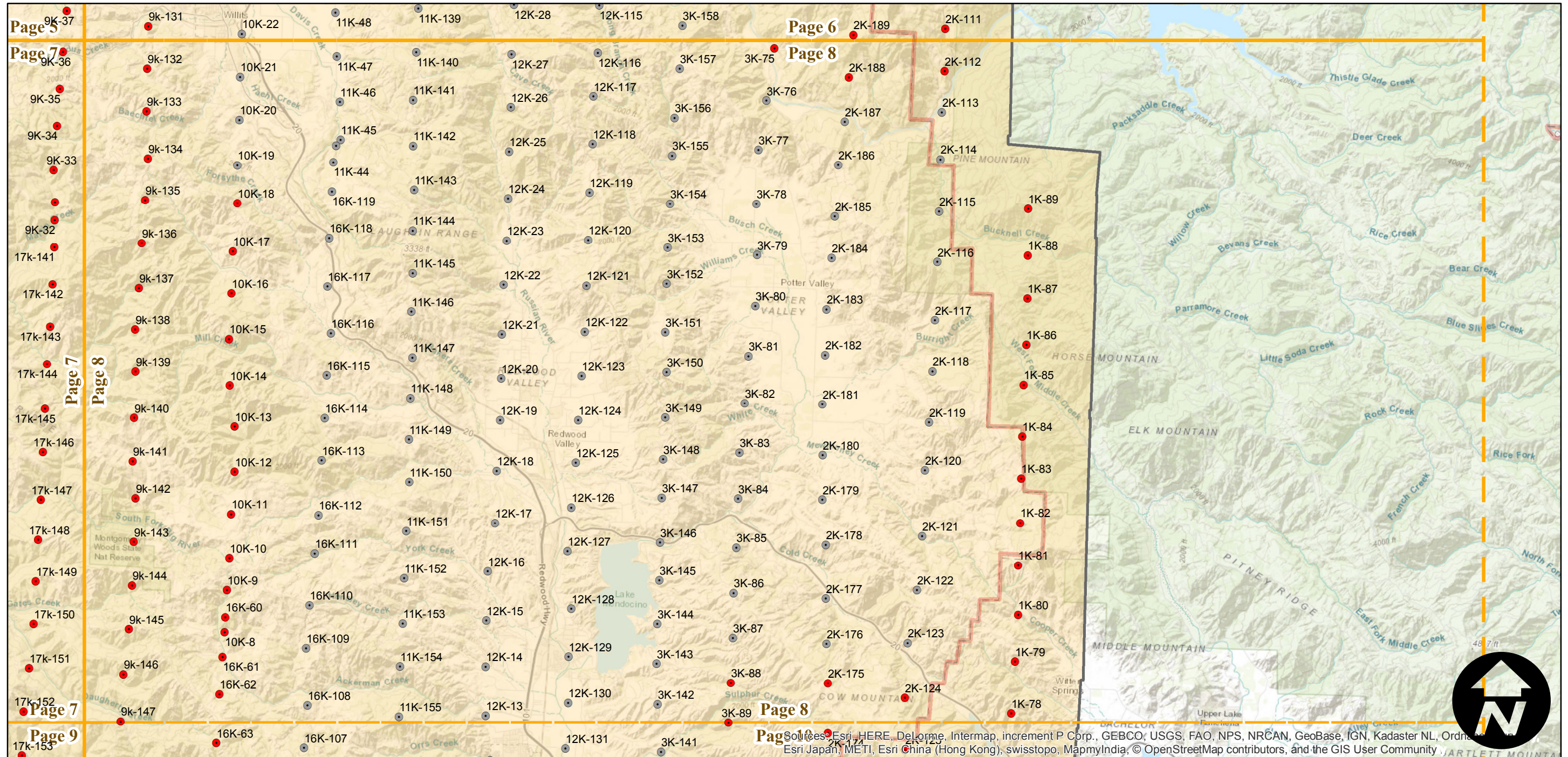
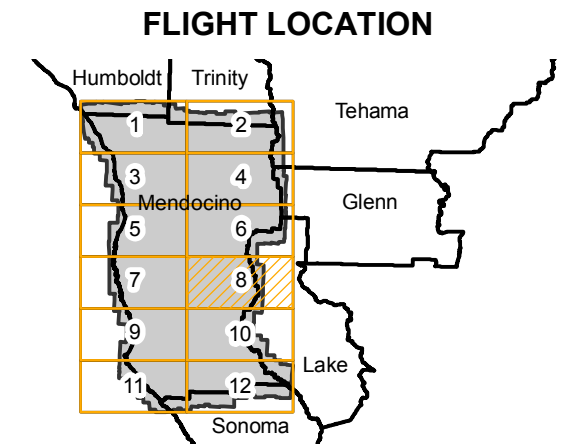
CVN-1952

Counties: Mendocino, Glenn, Humboldt, Lake, Sonoma, Tehama, Trinity
 Flight date(s): 07-03-1952 to 08-15-1952
 Scale: 1: 20,000
 Overlap: 60%

Note: Coverage includes Spyrock, Rockport, Leggett, Marks Place, Point Arena, and Gualala.

Complete Metadata:
<http://www.library.ucsb.edu/map-imagery-lab/aerial-photography-information>

- MIL owns frame
- MIL does not own frame



0 3 6 12 Miles

Index to Aerial Photography
 Page 8 of 12

Scale of this index: 1:150,000

Sources: Esri, HERE, DeLorme, Intermap, increment P Corp., GEBCO, USGS, FAO, NPS, NRCAN, GeoBase, IGN, Kadaster NL, Ordnance Survey, Esri Japan, METI, Esri China (Hong Kong), swisstopo, MapmyIndia, © OpenStreetMap contributors, and the GIS User Community

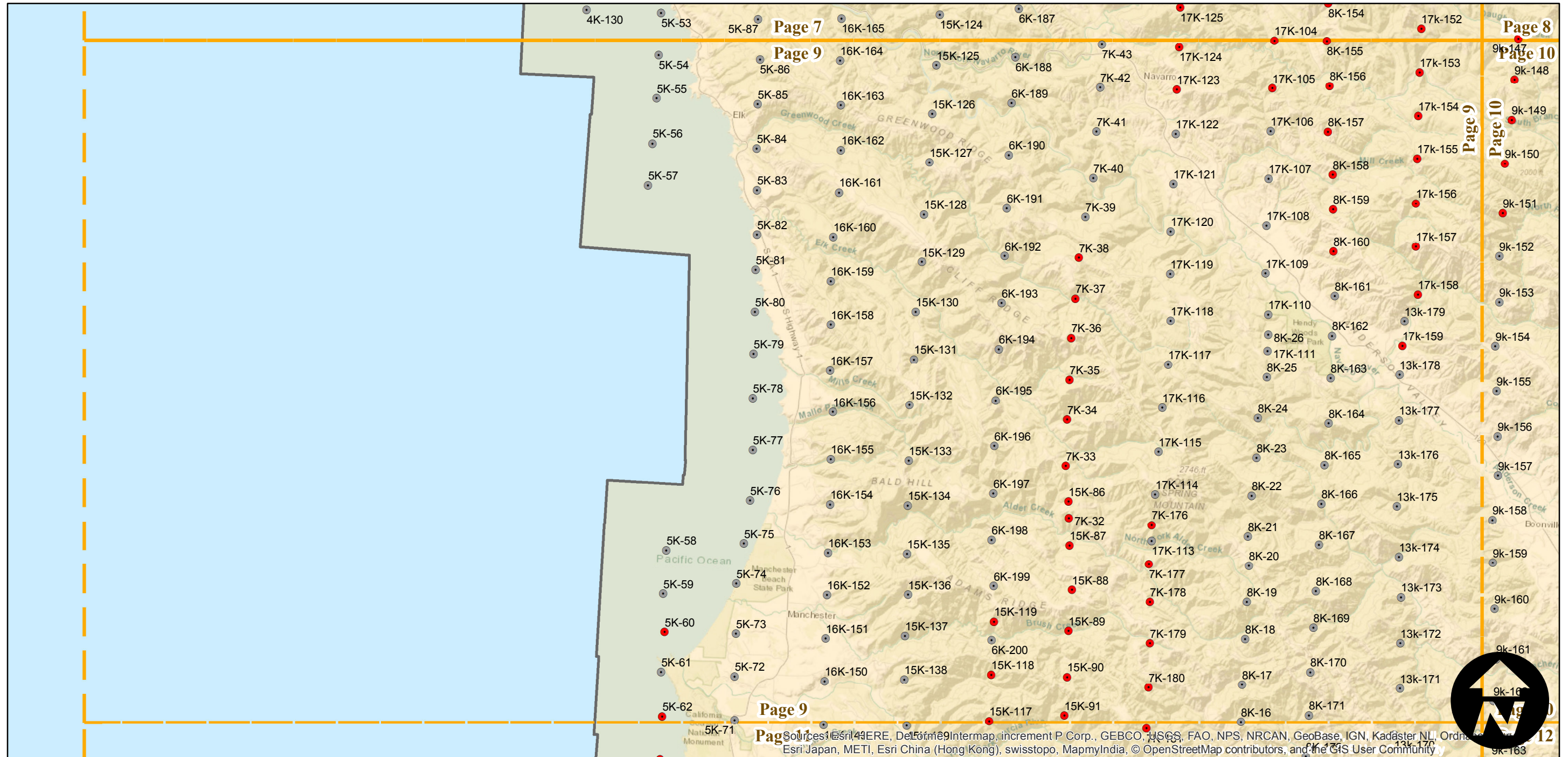
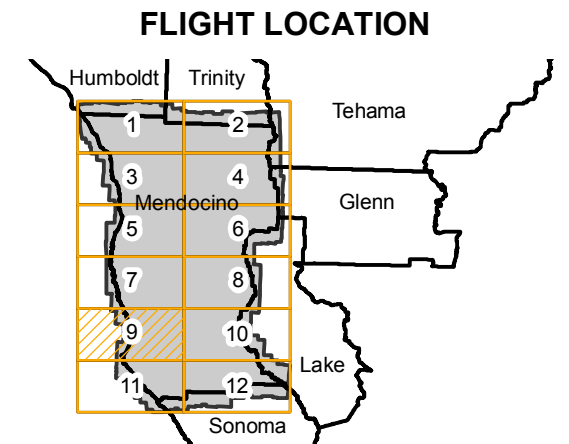
CVN-1952

Counties: Mendocino, Glenn, Humboldt, Lake, Sonoma, Tehama, Trinity
 Flight date(s): 07-03-1952 to 08-15-1952
 Scale: 1: 20,000
 Overlap: 60%

Complete Metadata:
<http://www.library.ucsb.edu/map-imagery-lab/aerial-photography-information>

Note: Coverage includes Spyrock, Rockport, Leggett, Marks Place, Point Arena, and Gualala.

- MIL owns frame
- MIL does not own frame



0 3 6 12 Miles

Index to Aerial Photography
 Page 9 of 12

Scale of this index: 1:150,000

Sources: Esri, HERE, DeLorme, Intermap, increment P Corp., GEBCO, USGS, FAO, NPS, NRCAN, GeoBase, IGN, Kadaster NL, Ordnance Survey, Esri Japan, METI, Esri China (Hong Kong), swisstopo, MapmyIndia, © OpenStreetMap contributors, and the GIS User Community

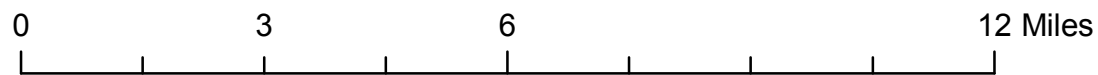
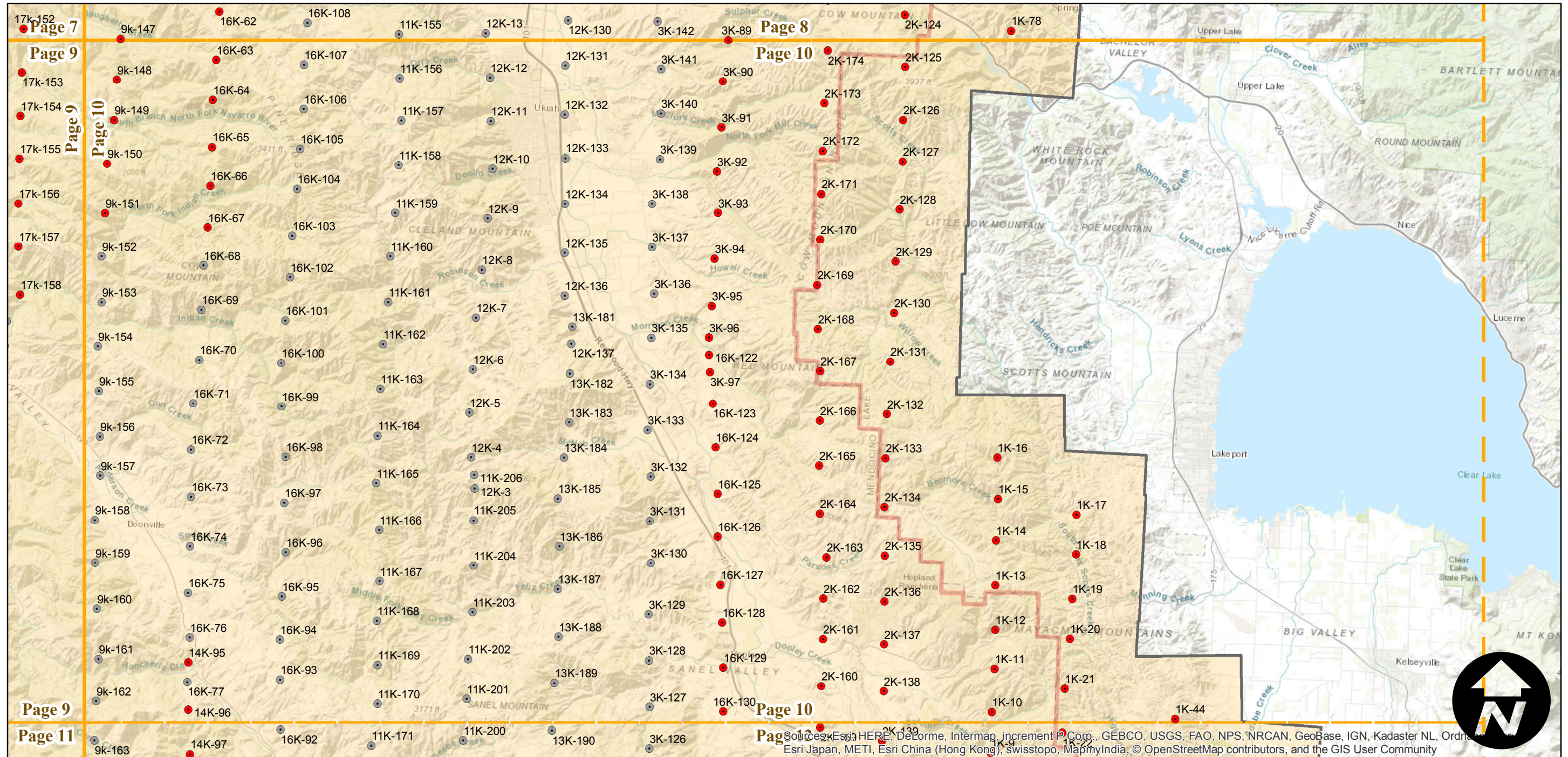
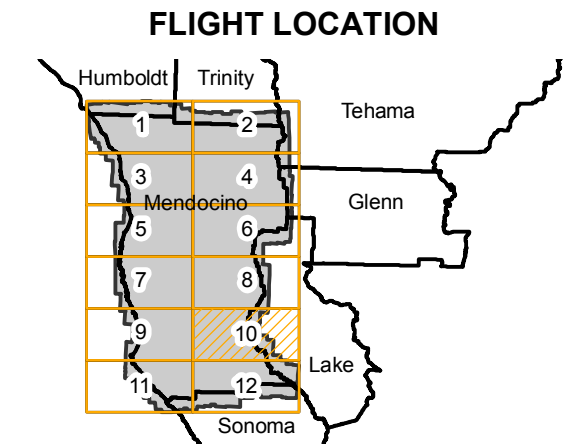
CVN-1952

Counties: Mendocino, Glenn, Humboldt, Lake, Sonoma, Tehama, Trinity
 Flight date(s): 07-03-1952 to 08-15-1952
 Scale: 1: 20,000
 Overlap: 60%

Complete Metadata:
<http://www.library.ucsb.edu/map-imagery-lab/aerial-photography-information>

Note: Coverage includes Spyrock, Rockport, Leggett, Marks Place, Point Arena, and Gualala.

- MIL owns frame
- MIL does not own frame



Index to Aerial Photography
 Page 10 of 12

Scale of this index: 1:150,000

Sources: Esri HERE, DeLorme, Intermap, increment P Corp., GEBCO, USGS, FAO, NPS, NRCAN, GeoBase, IGN, Kadaster NL, Ordnance Survey, Esri Japan, METI, Esri China (Hong Kong), Swisstopo, MapmyIndia, © OpenStreetMap contributors, and the GIS User Community

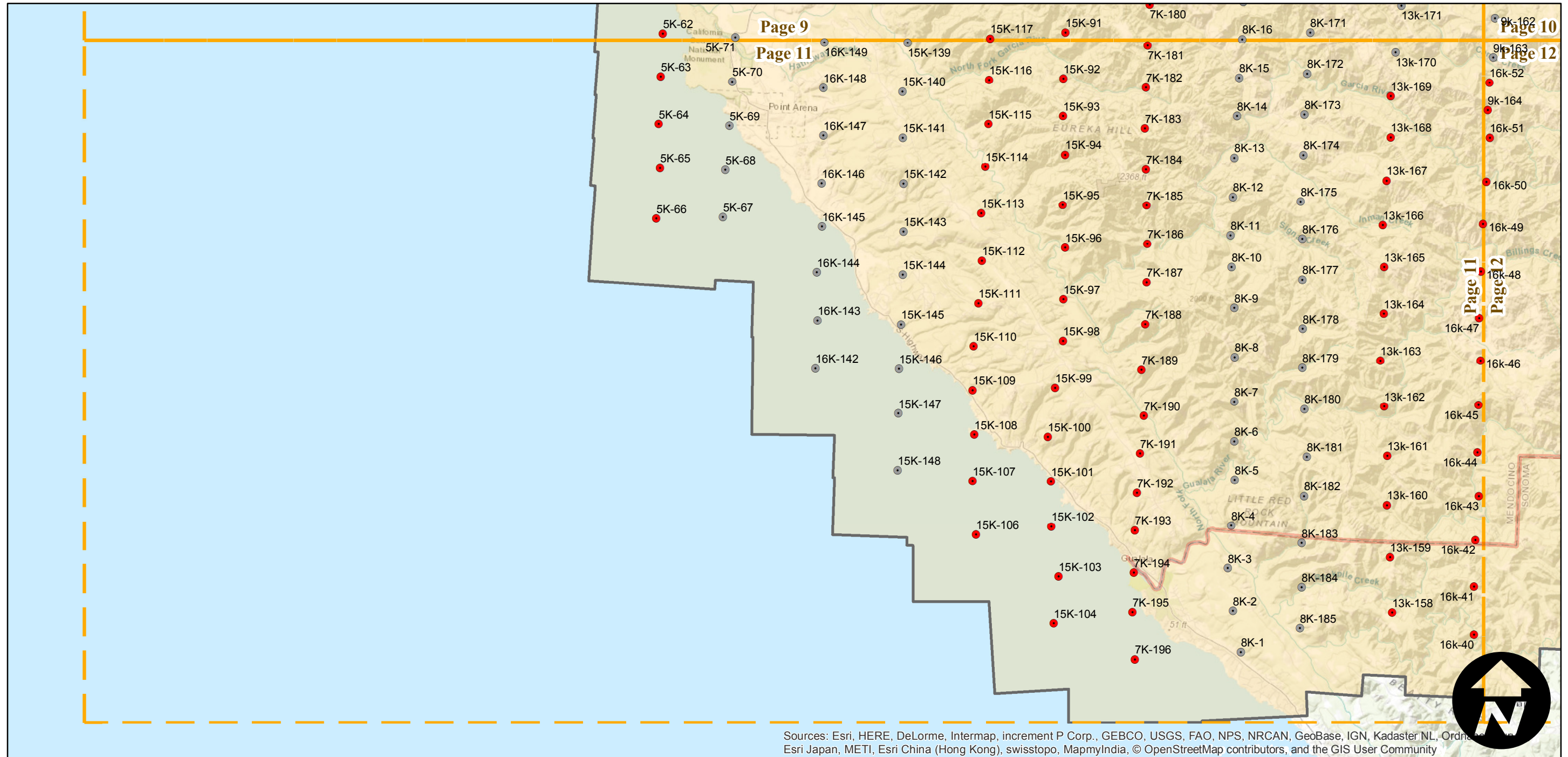
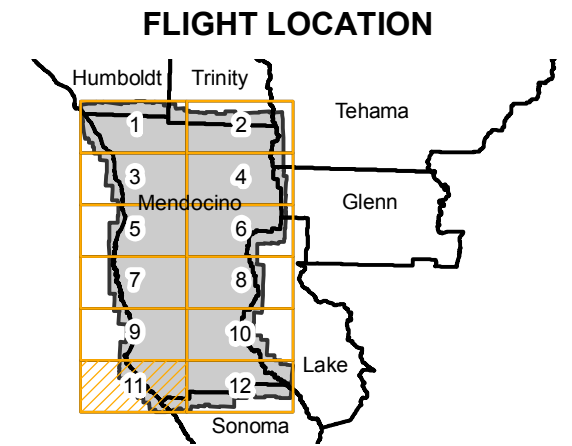
CVN-1952

Counties: Mendocino, Glenn, Humboldt, Lake, Sonoma, Tehama, Trinity
 Flight date(s): 07-03-1952 to 08-15-1952
 Scale: 1: 20,000
 Overlap: 60%

Complete Metadata:
<http://www.library.ucsb.edu/map-imagery-lab/aerial-photography-information>

Note: Coverage includes Spyrock, Rockport, Leggett, Marks Place, Point Arena, and Gualala.

- MIL owns frame
- MIL does not own frame



Sources: Esri, HERE, DeLorme, Intermap, increment P Corp., GEBCO, USGS, FAO, NPS, NRCAN, GeoBase, IGN, Kadaster NL, Ordnance Survey, Esri Japan, METI, Esri China (Hong Kong), swisstopo, MapmyIndia, © OpenStreetMap contributors, and the GIS User Community

0 3 6 12 Miles

Index to Aerial Photography
 Page 11 of 12

Scale of this index: 1:150,000

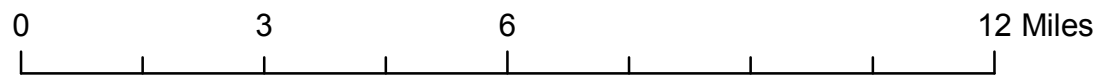
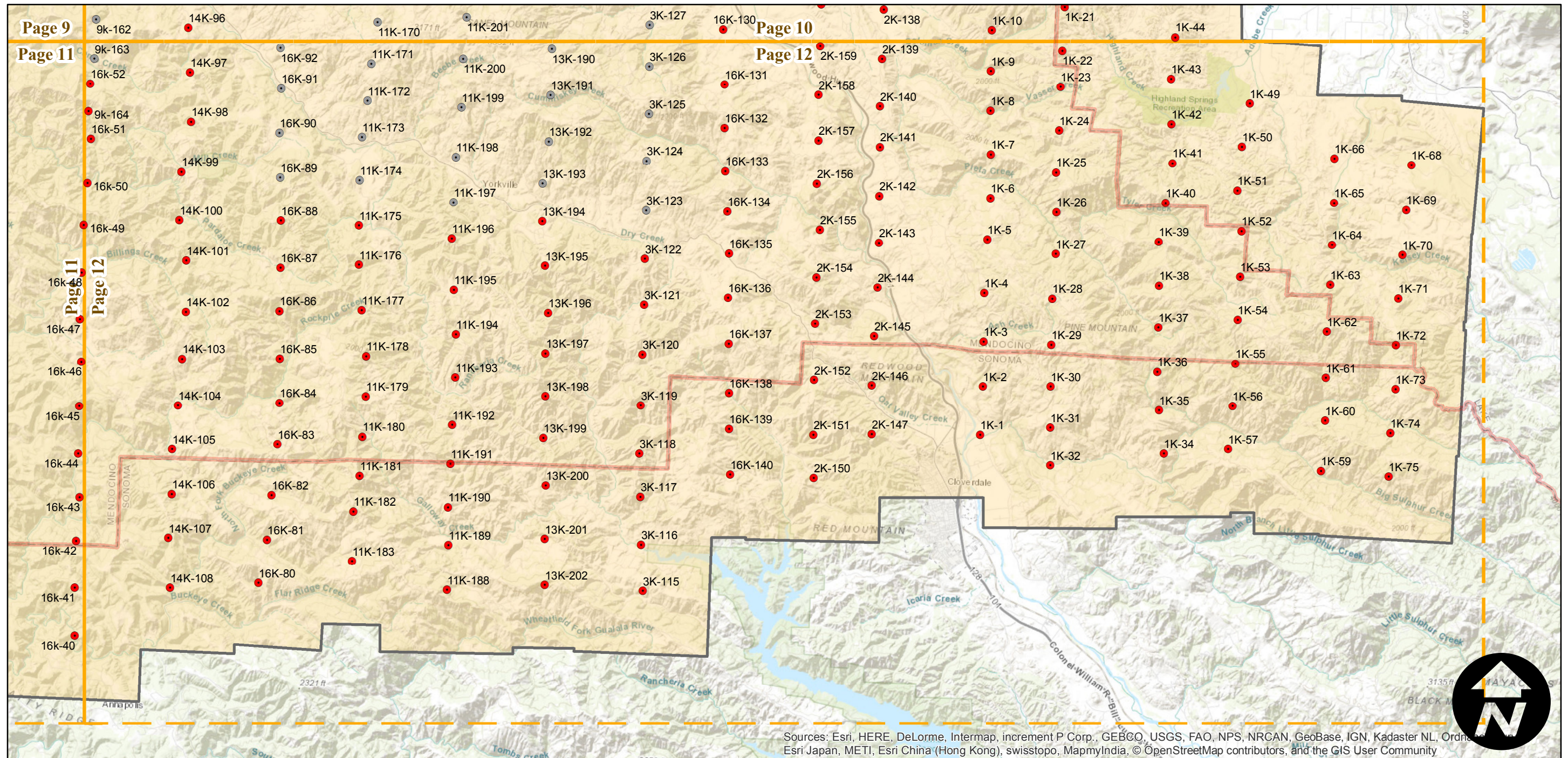
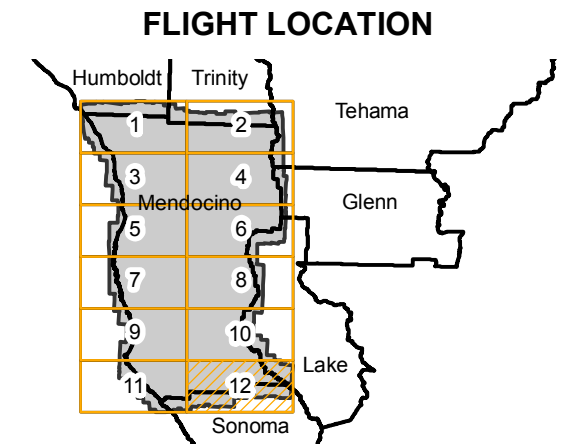
CVN-1952

Counties: Mendocino, Glenn, Humboldt, Lake, Sonoma, Tehama, Trinity
 Flight date(s): 07-03-1952 to 08-15-1952
 Scale: 1: 20,000
 Overlap: 60%

Complete Metadata:
<http://www.library.ucsb.edu/map-imagery-lab/aerial-photography-information>

Note: Coverage includes Spyrock, Rockport, Leggett, Marks Place, Point Arena, and Gualala.

- MIL owns frame
- MIL does not own frame



Index to Aerial Photography
 Page 12 of 12

Scale of this index: 1:150,000

Sources: Esri, HERE, DeLorme, Intermap, increment P Corp., GEBCO, USGS, FAO, NPS, NRCAN, GeoBase, IGN, Kadaster NL, Ordnance Survey, Esri Japan, METI, Esri China (Hong Kong), swisstopo, MapmyIndia, © OpenStreetMap contributors, and the GIS User Community