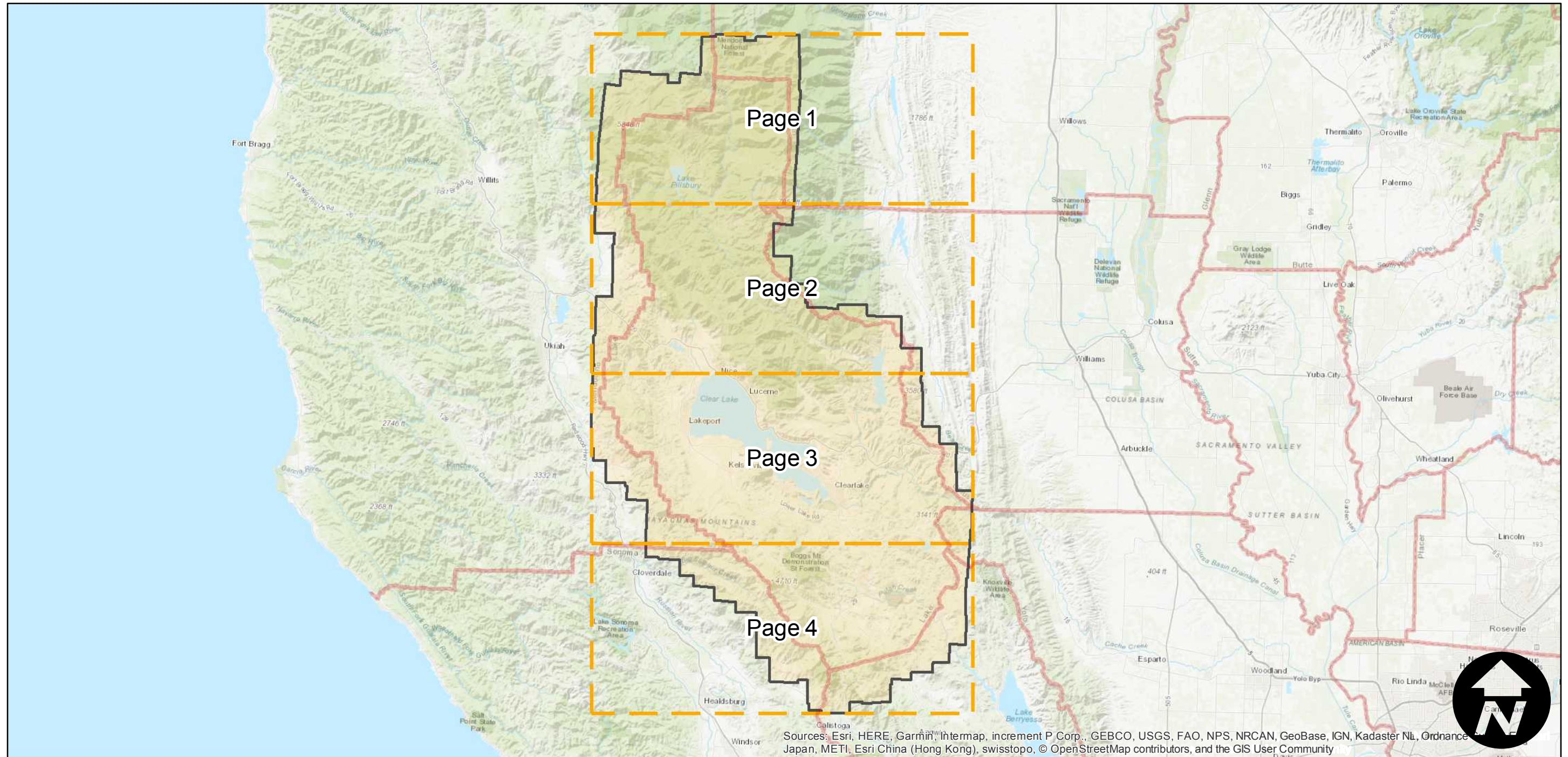
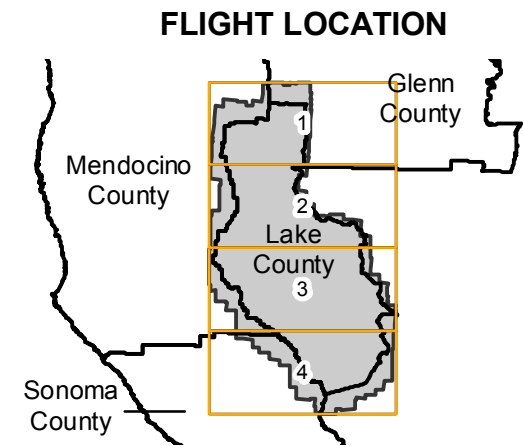


CVM-1952

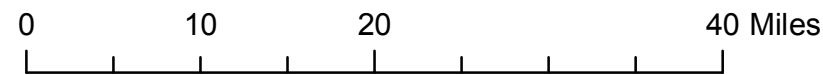
Counties: Lake, Glenn, Mendocino, Sonoma
Flight date(s): 07-01-1952 to 08-02-1952
Scale: 1:20,000
Overlap: 20-100%

Complete Metadata:
<https://www.library.ucsb.edu/src/airphotos/aerial-photography-information>

Note: Mendocino National Forest in Lake County. Coverage also includes Mount Saint Helena, Middleton, Big Valley, and the western portion of Clear Lake.



Sources: Esri, HERE, Garmin, Intermap, increment P Corp., GEBCO, USGS, FAO, NPS, NRCAN, GeoBase, IGN, Kadaster NL, Ordnance Survey, Esri Japan, METI, Esri China (Hong Kong), swisstopo, © OpenStreetMap contributors, and the GIS User Community



Index to Aerial Photography
Page Key

Scale of this index: 1:700,000

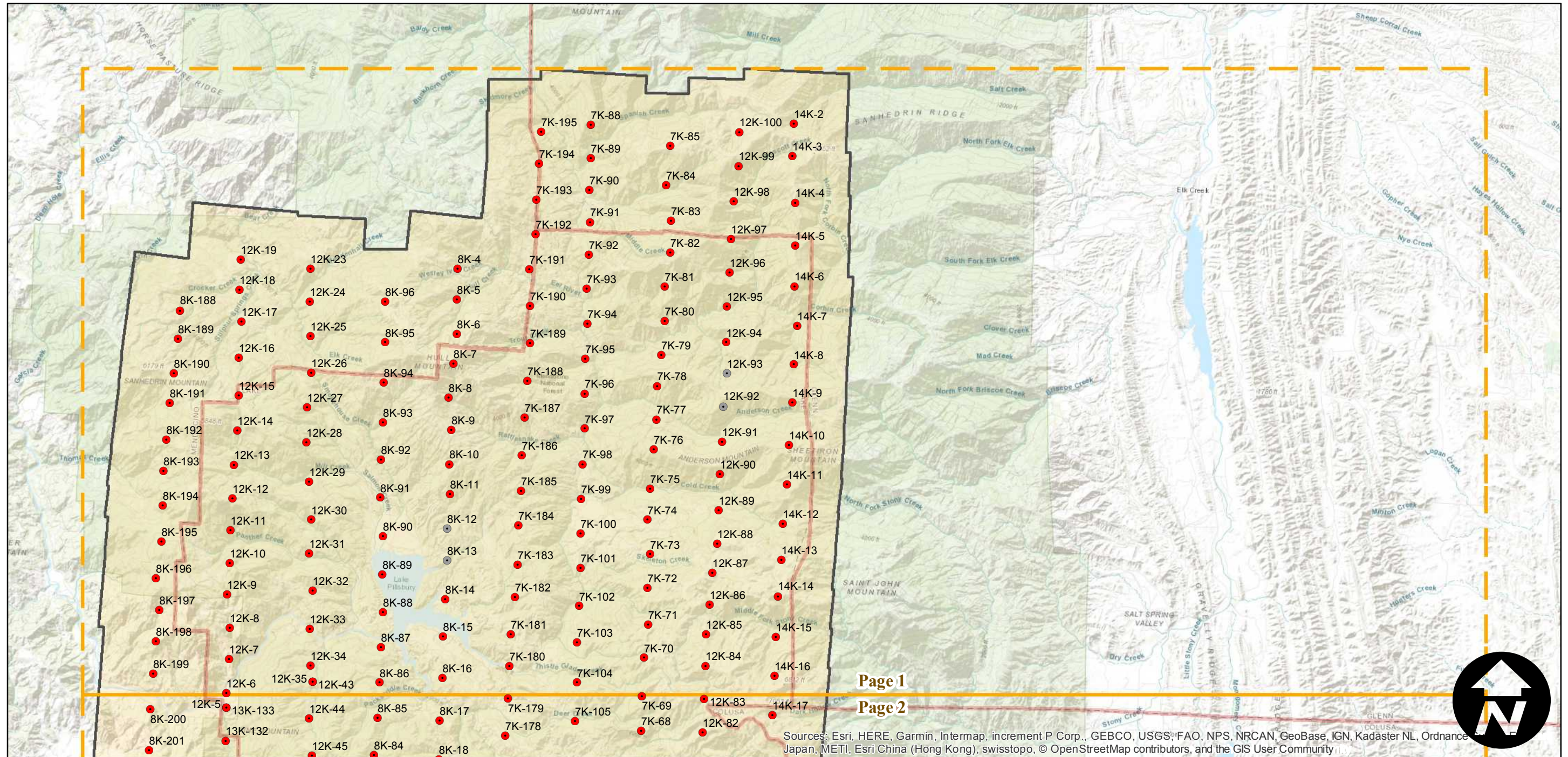
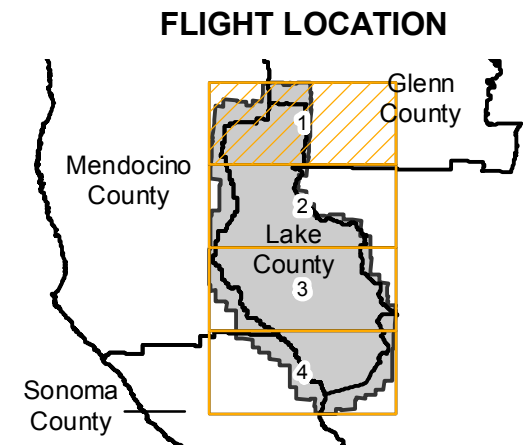
CVM-1952

Counties: Lake, Glenn, Mendocino, Sonoma
 Flight date(s): 07-01-1952 to 08-02-1952
 Scale: 1:20,000
 Overlap: 20-100%

Complete Metadata:
<https://www.library.ucsb.edu/src/airphotos/aerial-photography-information>

Note: Mendocino National Forest in Lake County. Coverage also includes Mount Saint Helena, Middleton, Big Valley, and the western portion of Clear Lake.

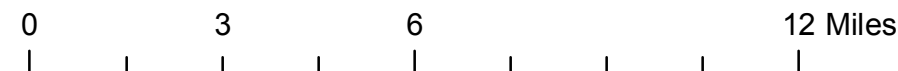
- MIL owns frame
- MIL does not own frame



Page 1

Page 2

Sources: Esri, HERE, Garmin, Intermap, increment P Corp., GEBCO, USGS, FAO, NPS, NRCAN, GeoBase, IGN, Kadaster NL, Ordnance Survey, Esri Japan, METI, Esri China (Hong Kong), swisstopo, © OpenStreetMap contributors, and the GIS User Community



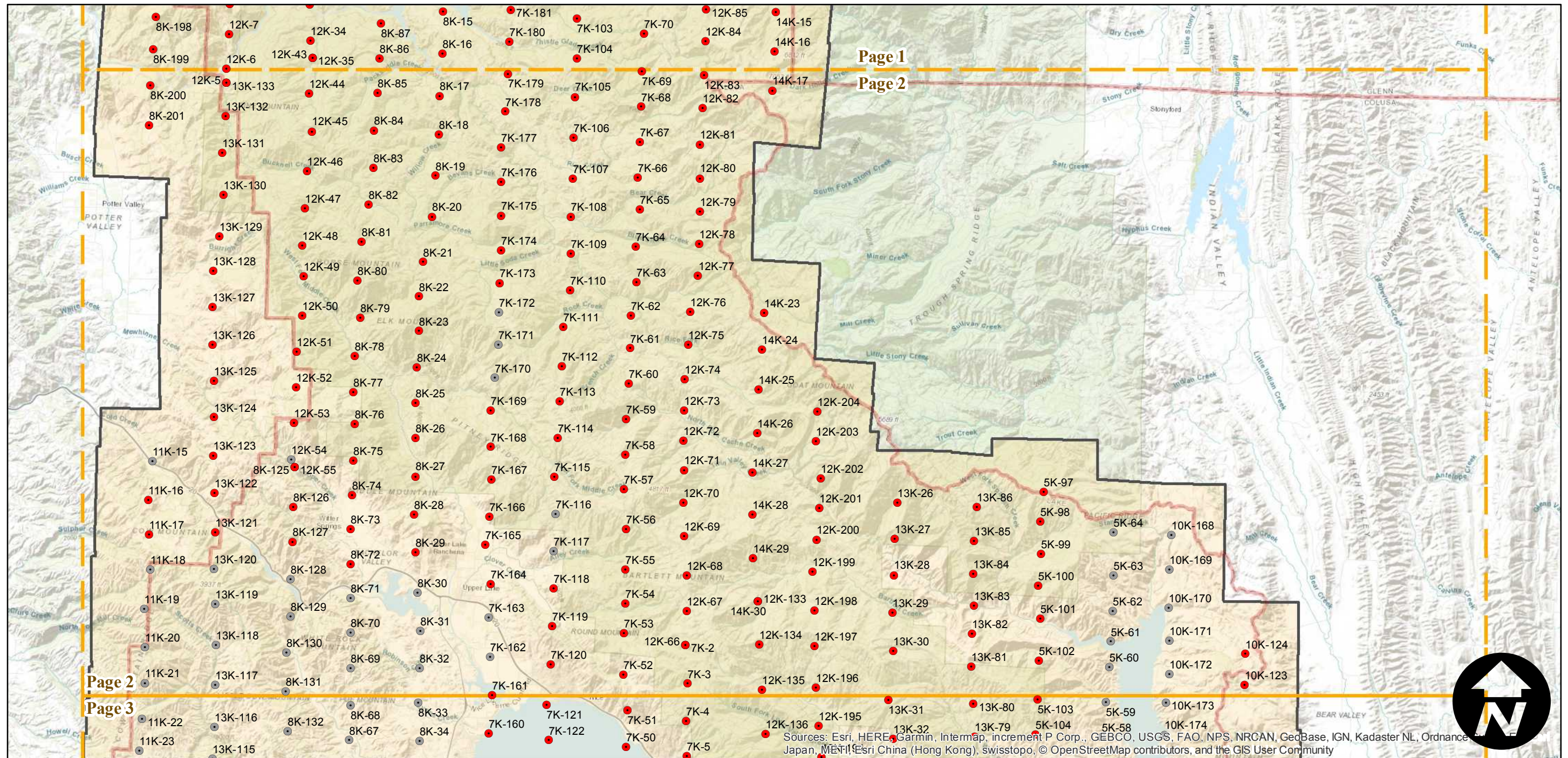
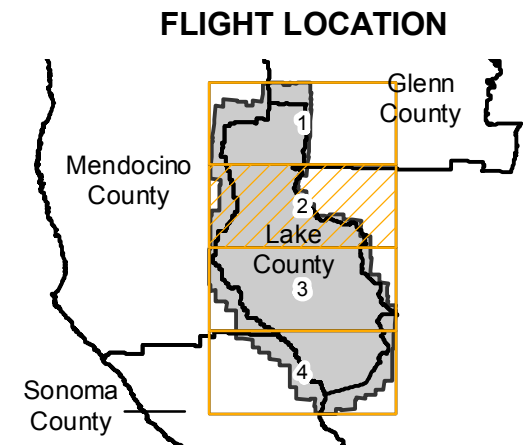
CVM-1952

Counties: Lake, Glenn, Mendocino, Sonoma
 Flight date(s): 07-01-1952 to 08-02-1952
 Scale: 1:20,000
 Overlap: 20-100%

Complete Metadata:
<https://www.library.ucsb.edu/src/airphotos/aerial-photography-information>

Note: Mendocino National Forest in Lake County. Coverage also includes Mount Saint Helena, Middleton, Big Valley, and the western portion of Clear Lake.

- MIL owns frame
- MIL does not own frame



0 3 6 12 Miles

Index to Aerial Photography
 Page 2 of 4

Scale of this index: 1:190,000

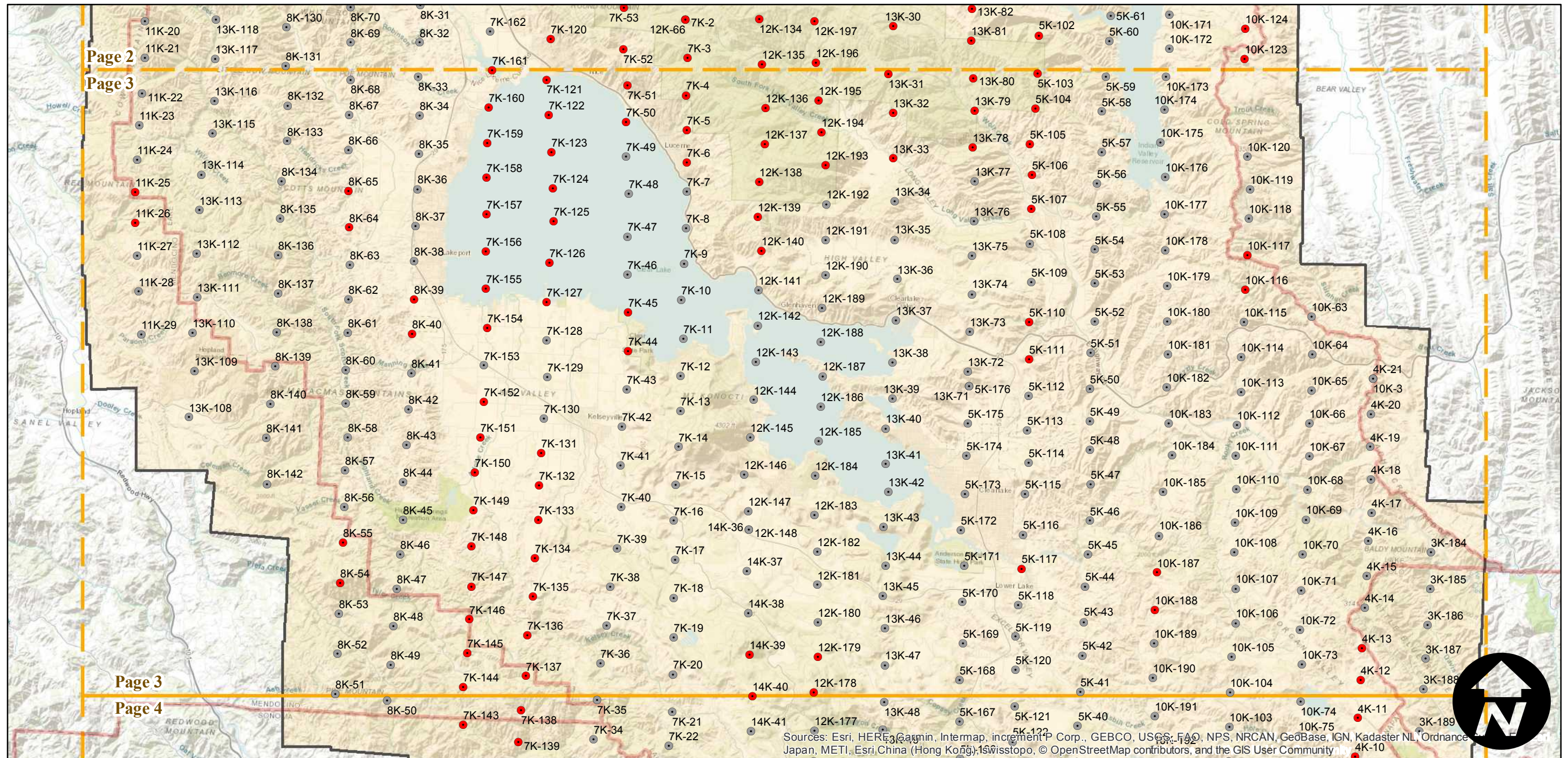
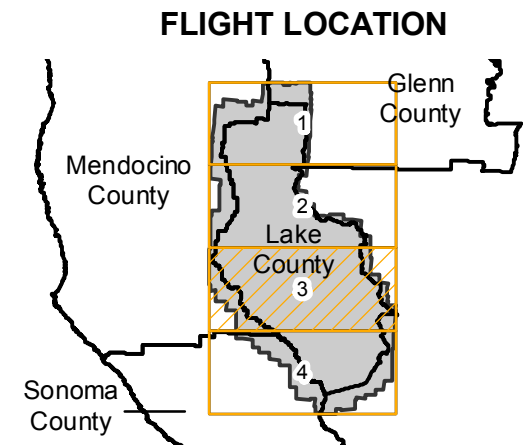
CVM-1952

Counties: Lake, Glenn, Mendocino, Sonoma
 Flight date(s): 07-01-1952 to 08-02-1952
 Scale: 1:20,000
 Overlap: 20-100%

Complete Metadata:
<https://www.library.ucsb.edu/src/airphotos/aerial-photography-information>

Note: Mendocino National Forest in Lake County. Coverage also includes Mount Saint Helena, Middleton, Big Valley, and the western portion of Clear Lake.

- MIL owns frame
- MIL does not own frame



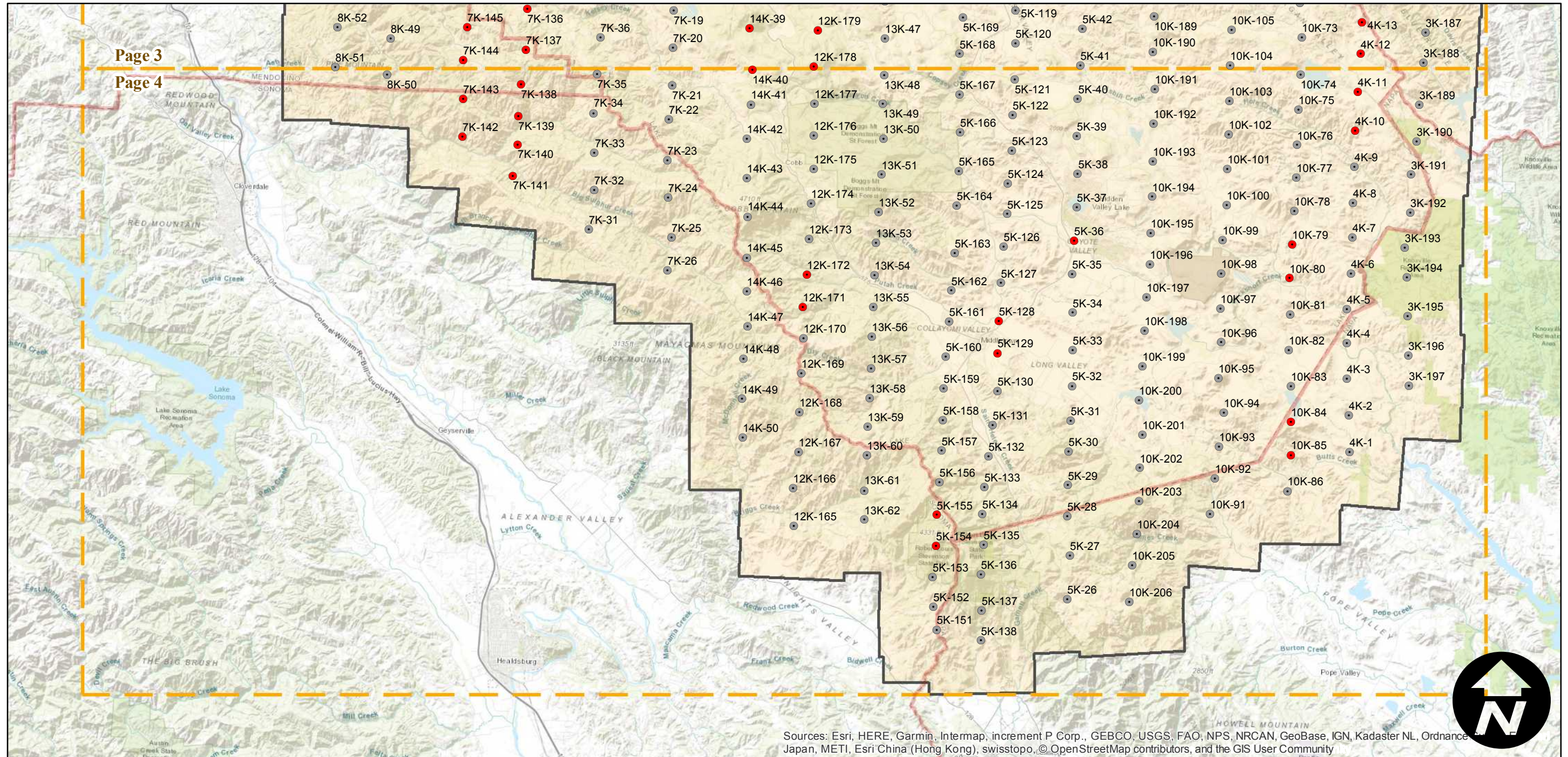
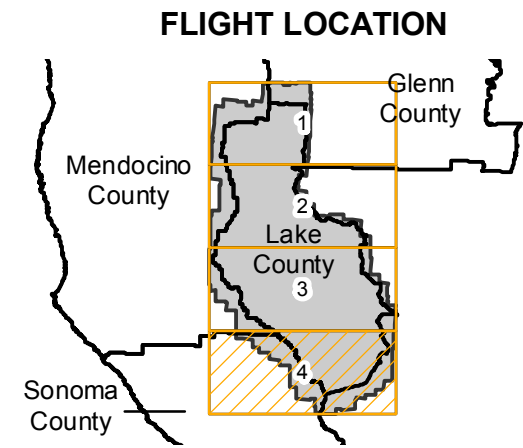
CVM-1952

Counties: Lake, Glenn, Mendocino, Sonoma
 Flight date(s): 07-01-1952 to 08-02-1952
 Scale: 1:20,000
 Overlap: 20-100%

Complete Metadata:
<https://www.library.ucsb.edu/src/airphotos/aerial-photography-information>

Note: Mendocino National Forest in Lake County. Coverage also includes Mount Saint Helena, Middleton, Big Valley, and the western portion of Clear Lake.

- MIL owns frame
- MIL does not own frame



Sources: Esri, HERE, Garmin, Intermap, increment P Corp., GEBCO, USGS, FAO, NPS, NRCAN, GeoBase, IGN, Kadaster NL, Ordnance Survey, Esri Japan, METI, Esri China (Hong Kong), swisstopo, © OpenStreetMap contributors, and the GIS User Community

