

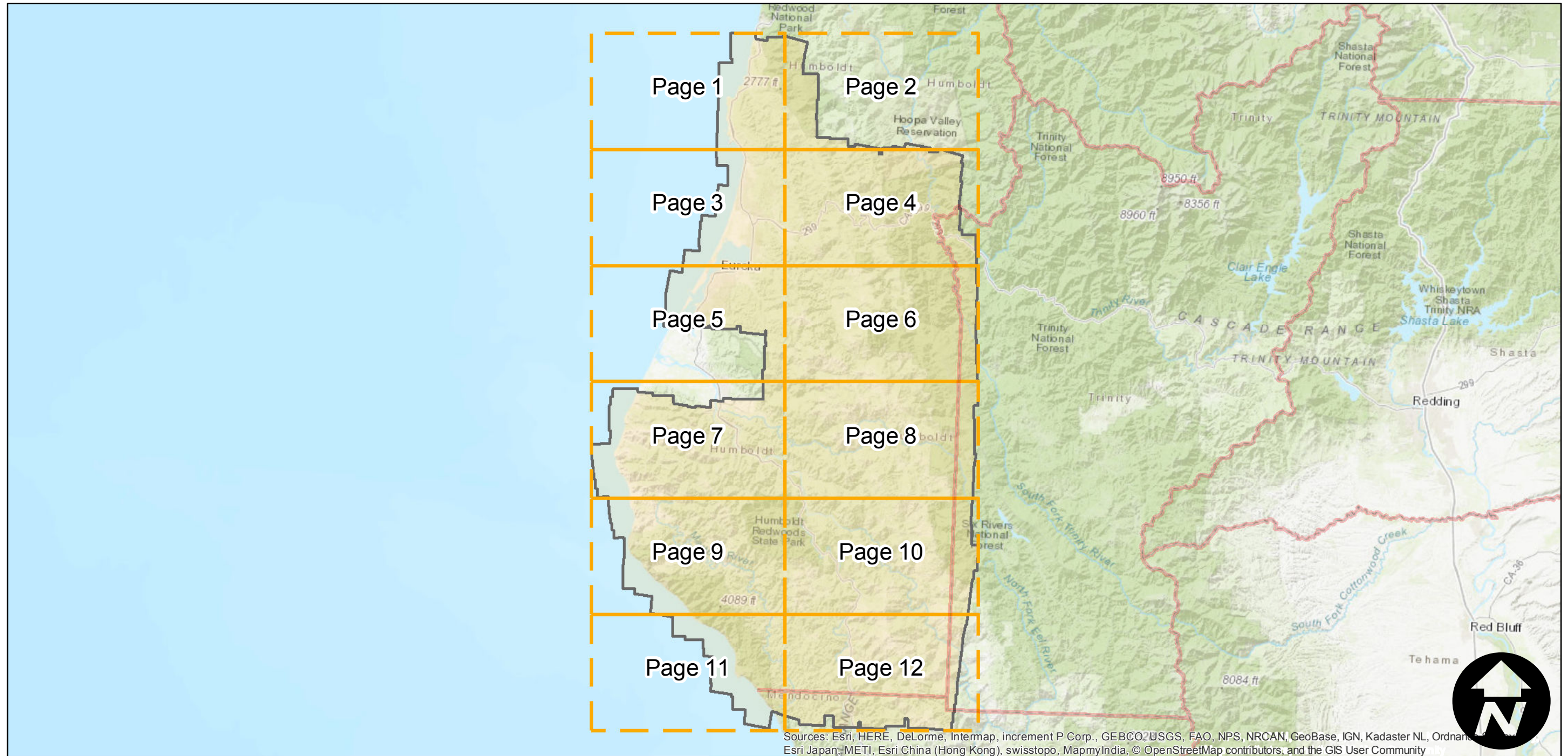
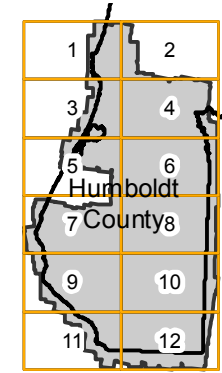
CVL-1942

Counties: Humboldt, Mendocino
Flight date(s): 10-29-1941 to 7-30-1942
Scale: 1:20,000
Overlap: 60%

Complete Metadata:
<http://www.library.ucsb.edu/map-imagery-lab/aerial-photography-information>

Note: Coverage of mostly the eastern and southern portions of the county. Areas covered include Garberville, Rio Dell, Six Rivers National Forest, and McKinleyville.

FLIGHT LOCATION



0 10 20 40 Miles

Index to Aerial Photography
Page Key

Scale of this index: 1:875,000

CVL-1942

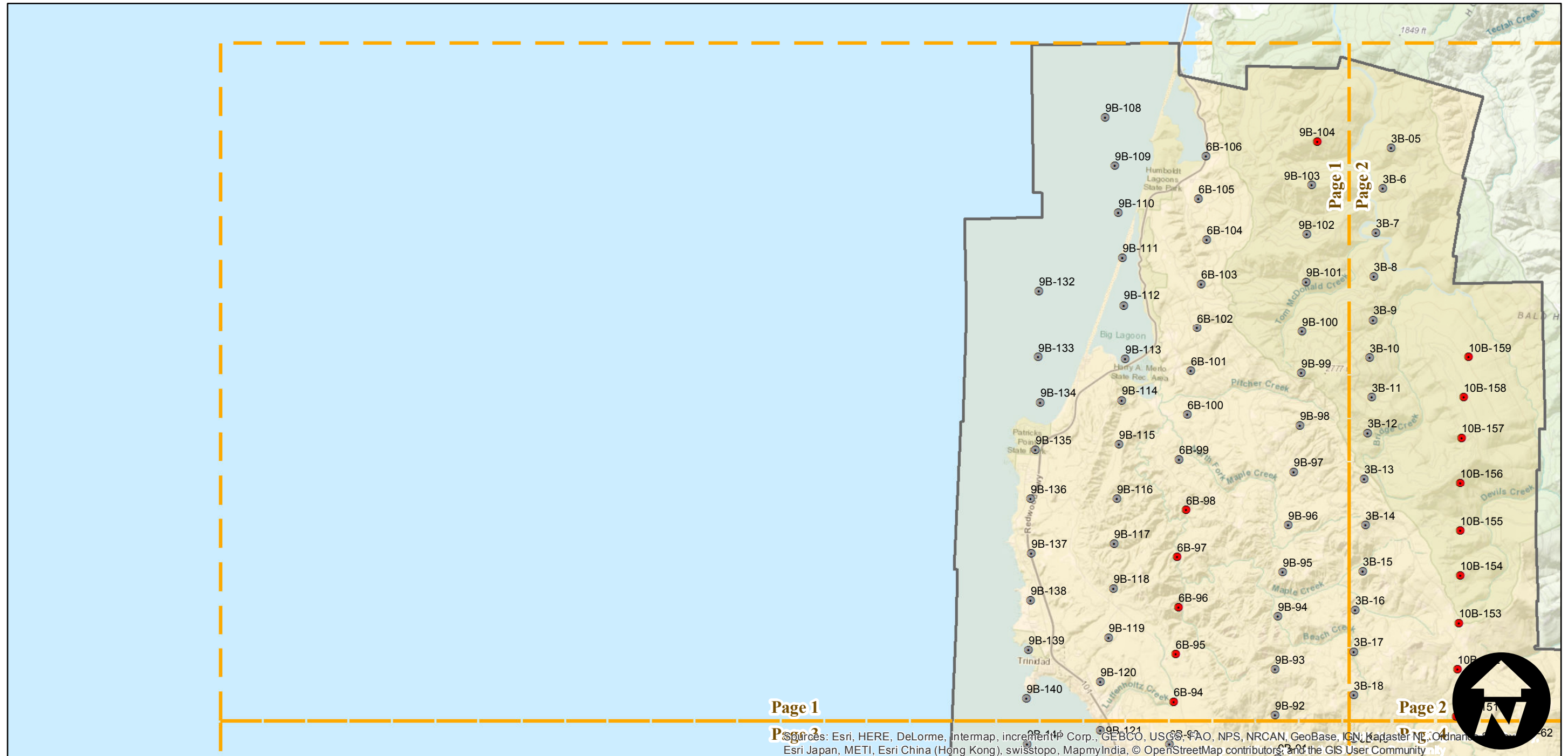
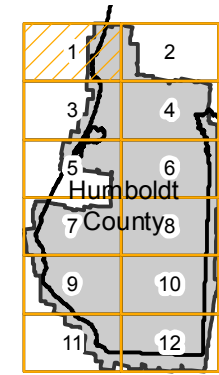
Counties: Humboldt, Mendocino
Flight date(s): 10-29-1941 to 7-30-1942
Scale: 1:20,000
Overlap: 60%

Complete Metadata:
<http://www.library.ucsb.edu/map-imagery-lab/aerial-photography-information>

Note: Coverage of mostly the eastern and southern portions of the county. Areas covered include Garberville, Rio Dell, Six Rivers National Forest, and McKinleyville.

- MIL owns frame
- MIL does not own frame

FLIGHT LOCATION



0 2 4 8 Miles

Index to Aerial Photography
Page 1 of 12

Scale of this index: 1:150,000

Sources: Esri, HERE, DeLorme, Intermap, increment P Corp., GEBCO, USGS, FAO, NPS, NRCAN, GeoBase, IGN, Kadaster NL, Ordnance Survey, Esri Japan, METI, Esri China (Hong Kong), swisstopo, MapmyIndia, © OpenStreetMap contributors, and the GIS User Community

CVL-1942

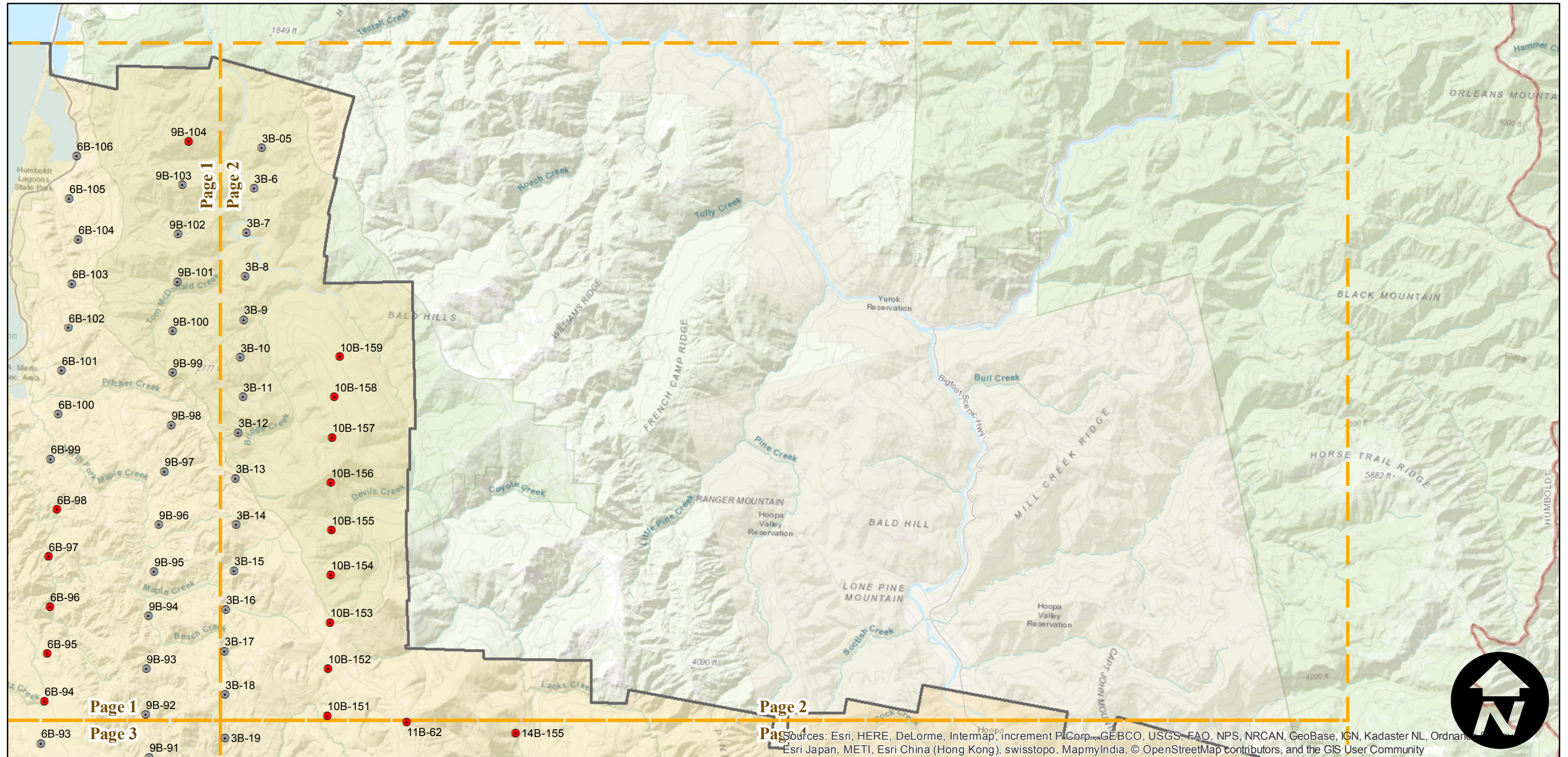
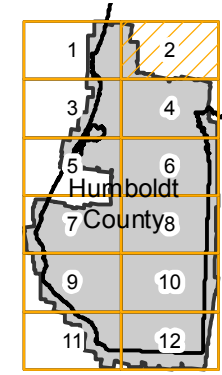
Counties: Humboldt, Mendocino
 Flight date(s): 10-29-1941 to 7-30-1942
 Scale: 1:20,000
 Overlap: 60%

Complete Metadata:
<http://www.library.ucsb.edu/map-imagery-lab/aerial-photography-information>

Note: Coverage of mostly the eastern and southern portions of the county. Areas covered include Garberville, Rio Dell, Six Rivers National Forest, and McKinleyville.

- MIL owns frame
- MIL does not own frame

FLIGHT LOCATION



0 2 4 8 Miles

Index to Aerial Photography
 Page 2 of 12

Scale of this index: 1:150,000

Sources: Esri, HERE, DeLorme, Intermap, increment P Corp., GEBCO, USGS, FAO, NPS, NRCAN, GeoBase, IGN, Kadaster NL, Ordnance Survey, Esri Japan, METI, Esri China (Hong Kong), swisstopo, MapmyIndia, © OpenStreetMap contributors, and the GIS User Community

CVL-1942

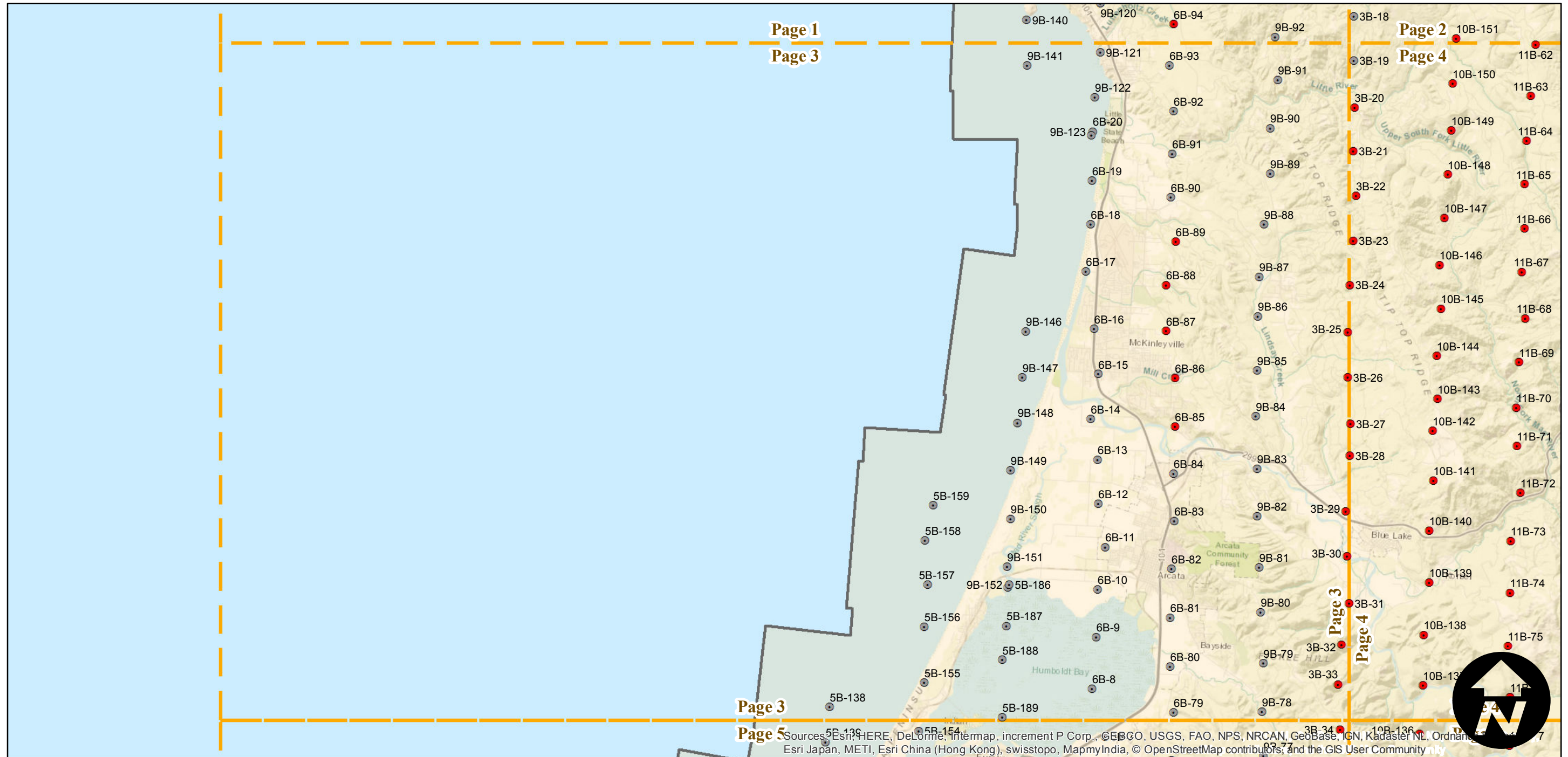
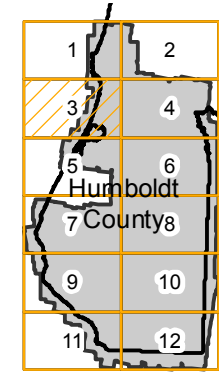
Counties: Humboldt, Mendocino
 Flight date(s): 10-29-1941 to 7-30-1942
 Scale: 1:20,000
 Overlap: 60%

Complete Metadata:
<http://www.library.ucsb.edu/map-imagery-lab/aerial-photography-information>

Note: Coverage of mostly the eastern and southern portions of the county. Areas covered include Garberville, Rio Dell, Six Rivers National Forest, and McKinleyville.

- MIL owns frame
- MIL does not own frame

FLIGHT LOCATION



0 2 4 8 Miles

Index to Aerial Photography
 Page 3 of 12

Scale of this index: 1:150,000

CVL-1942

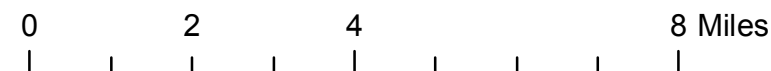
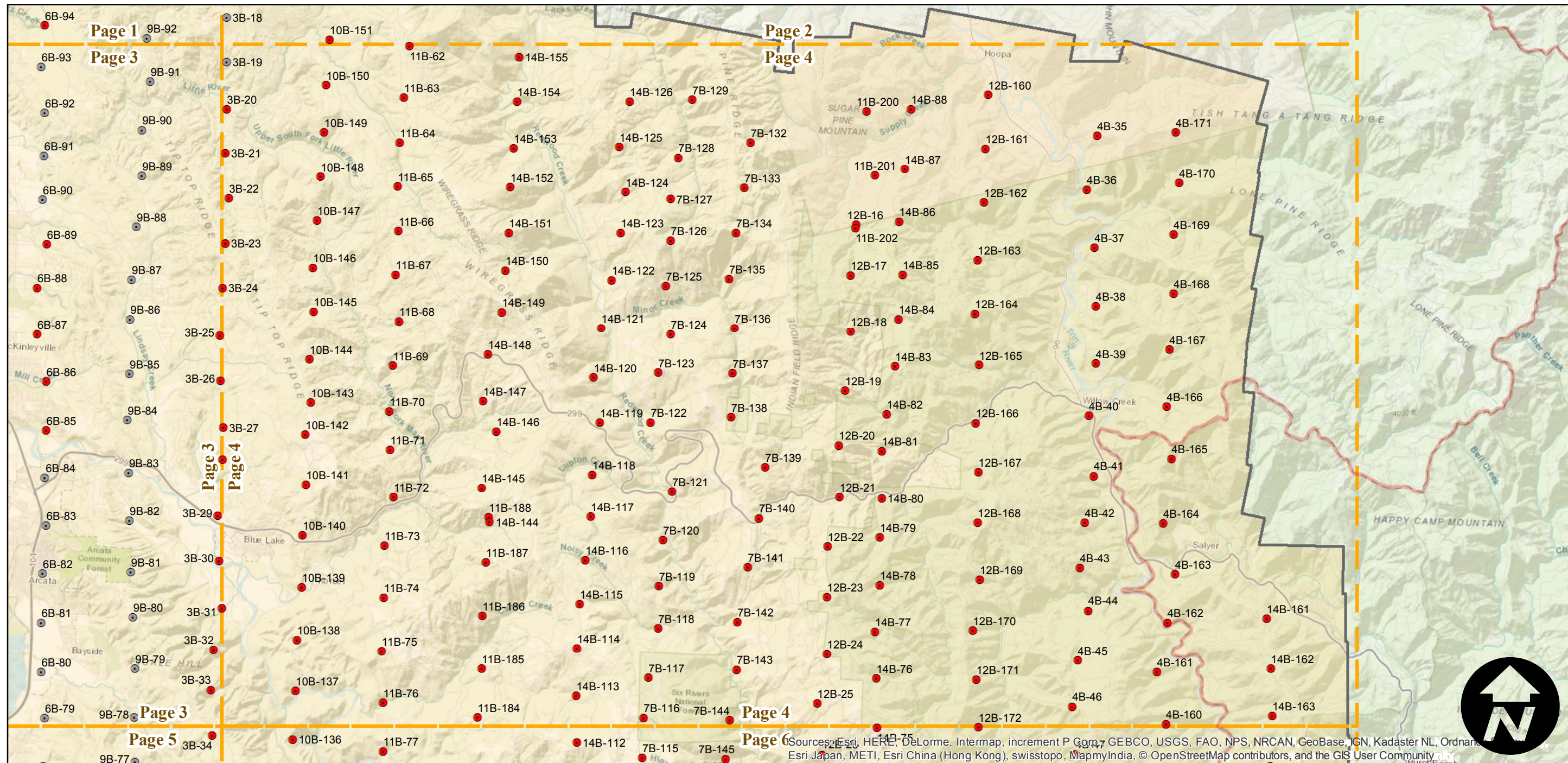
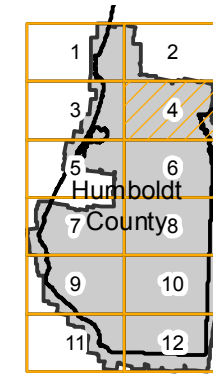
Counties: Humboldt, Mendocino
 Flight date(s): 10-29-1941 to 7-30-1942
 Scale: 1:20,000
 Overlap: 60%

Complete Metadata:
<http://www.library.ucsb.edu/map-imagery-lab/aerial-photography-information>

Note: Coverage of mostly the eastern and southern portions of the county. Areas covered include Garberville, Rio Dell, Six Rivers National Forest, and McKinleyville.

- MIL owns frame
- MIL does not own frame

FLIGHT LOCATION



Index to Aerial Photography
 Page 4 of 12

Scale of this index: 1:150,000



Source: Esri, HERE, DeLorme, Intermap, increment P Corp., GEBCO, USGS, FAO, NPS, NRCAN, GeoBase, IGN, Kadaster NL, Ordnance Survey, Esri Japan, METI, Esri China (Hong Kong), swisstopo, MapmyIndia, © OpenStreetMap contributors, and the GIS User Community

CVL-1942

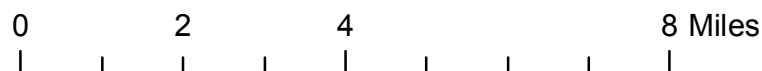
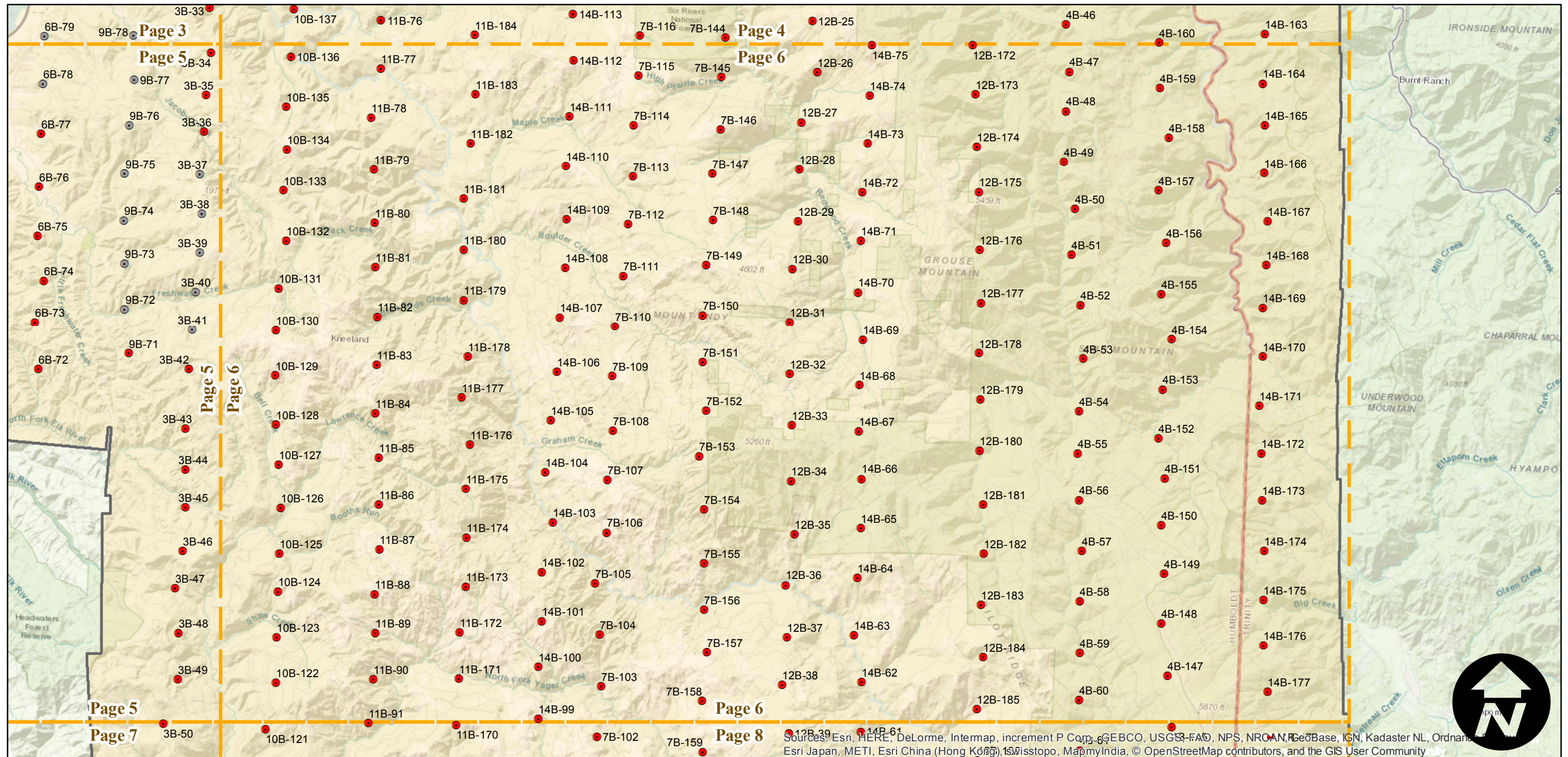
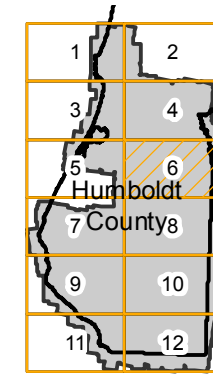
Counties: Humboldt, Mendocino
 Flight date(s): 10-29-1941 to 7-30-1942
 Scale: 1:20,000
 Overlap: 60%

Complete Metadata:
<http://www.library.ucsb.edu/map-imagery-lab/aerial-photography-information>

Note: Coverage of mostly the eastern and southern portions of the county. Areas covered include Garberville, Rio Dell, Six Rivers National Forest, and McKinleyville.

- MIL owns frame
- MIL does not own frame

FLIGHT LOCATION



Sources: Esri, HERE, DeLorme, Intermap, increment P Corp., GEBCO, USGS, FAO, NPS, NRCAN, GeoBase, IGN, Kadaster NL, Ordnance Survey, Esri Japan, METI, Esri China (Hong Kong), Swisstopo, Mapbox India, © OpenStreetMap contributors, and the GIS User Community



CVL-1942

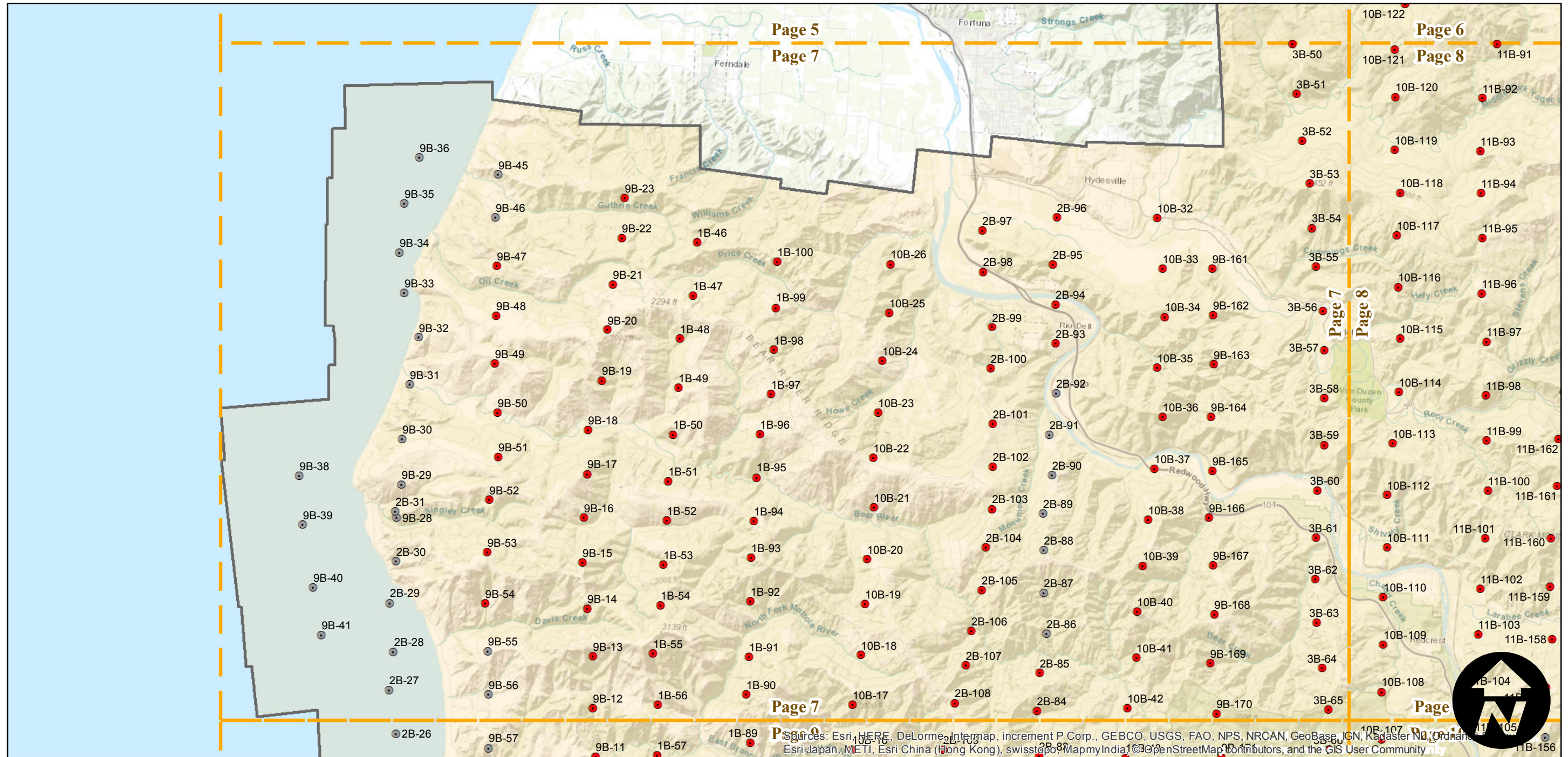
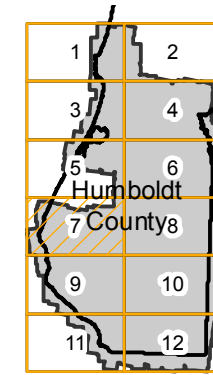
Counties: Humboldt, Mendocino
 Flight date(s): 10-29-1941 to 7-30-1942
 Scale: 1:20,000
 Overlap: 60%

Complete Metadata:
<http://www.library.ucsb.edu/map-imagery-lab/aerial-photography-information>

Note: Coverage of mostly the eastern and southern portions of the county. Areas covered include Garberville, Rio Dell, Six Rivers National Forest, and McKinleyville.

- MIL owns frame
- MIL does not own frame

FLIGHT LOCATION



Sources: Esri, HERE, DeLorme, Intermap, increment P Corp., GEBCO, USGS, FAO, NPS, NRCAN, GeoBase, IGN, Kadaster NL, Ordnance Survey, Esri Japan, METI, Esri China (Hong Kong), swisstopo, MapmyIndia, © 2019 Swisstopo, Swisstopo, Mapbox Contributors, and the GIS User Community

CVL-1942

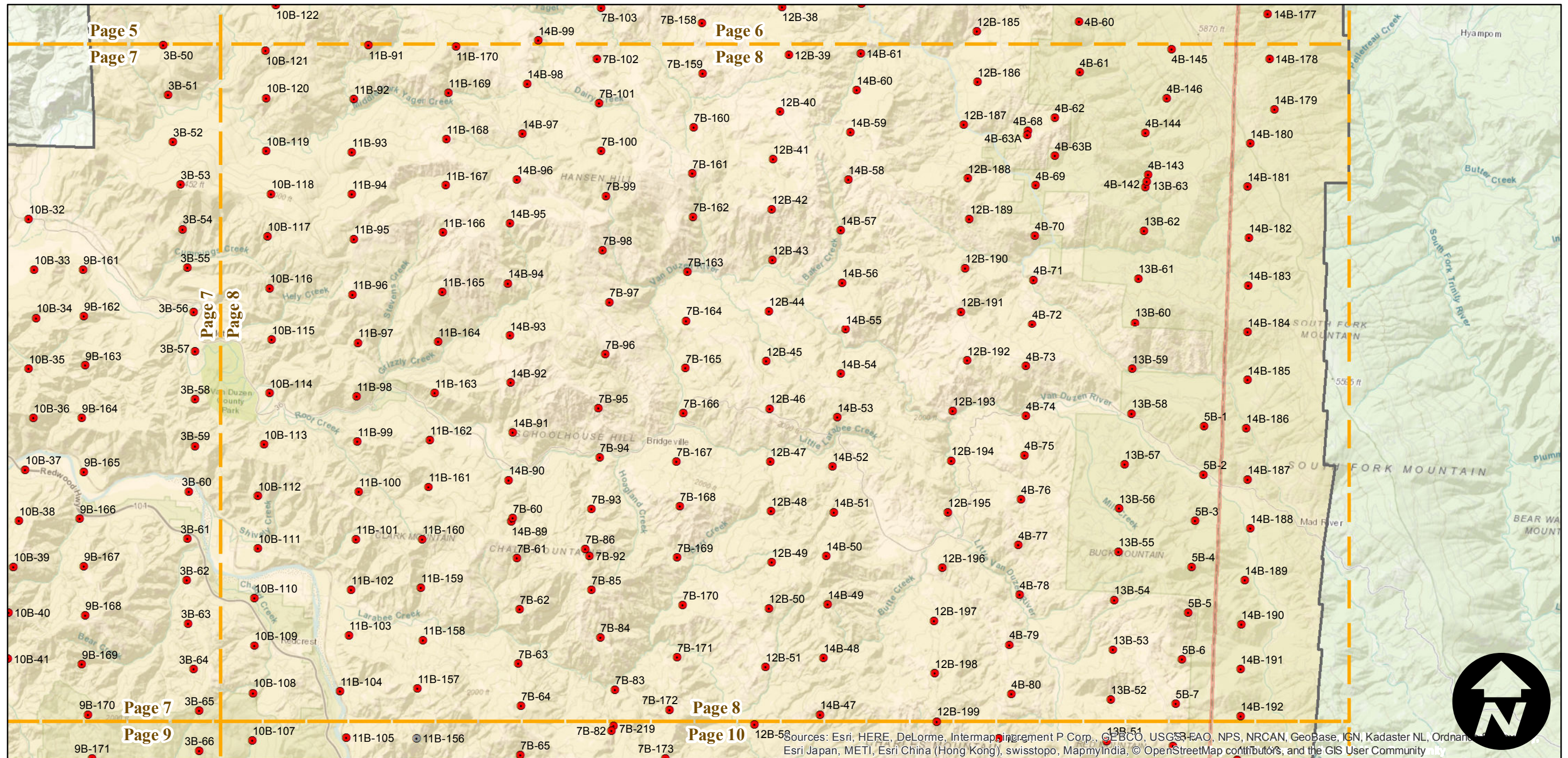
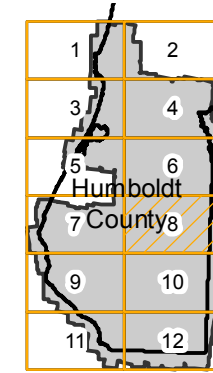
Counties: Humboldt, Mendocino
Flight date(s): 10-29-1941 to 7-30-1942
Scale: 1:20,000
Overlap: 60%

Complete Metadata:
<http://www.library.ucsb.edu/map-imagery-lab/aerial-photography-information>

Note: Coverage of mostly the eastern and southern portions of the county. Areas covered include Garberville, Rio Dell, Six Rivers National Forest, and McKinleyville.

- MIL owns frame
- MIL does not own frame

FLIGHT LOCATION



0 2 4 8 Miles

Index to Aerial Photography
Page 8 of 12

Scale of this index: 1:150,000

Sources: Esri, HERE, DeLorme, Intermap, increment P Corp., GEBCO, USGS, FAO, NPS, NRCAN, Geobase, IGN, Kadaster NL, Ordnance Survey, Esri Japan, METI, Esri China (Hong Kong), swisstopo, MapmyIndia, © OpenStreetMap contributors, and the GIS User Community

CVL-1942

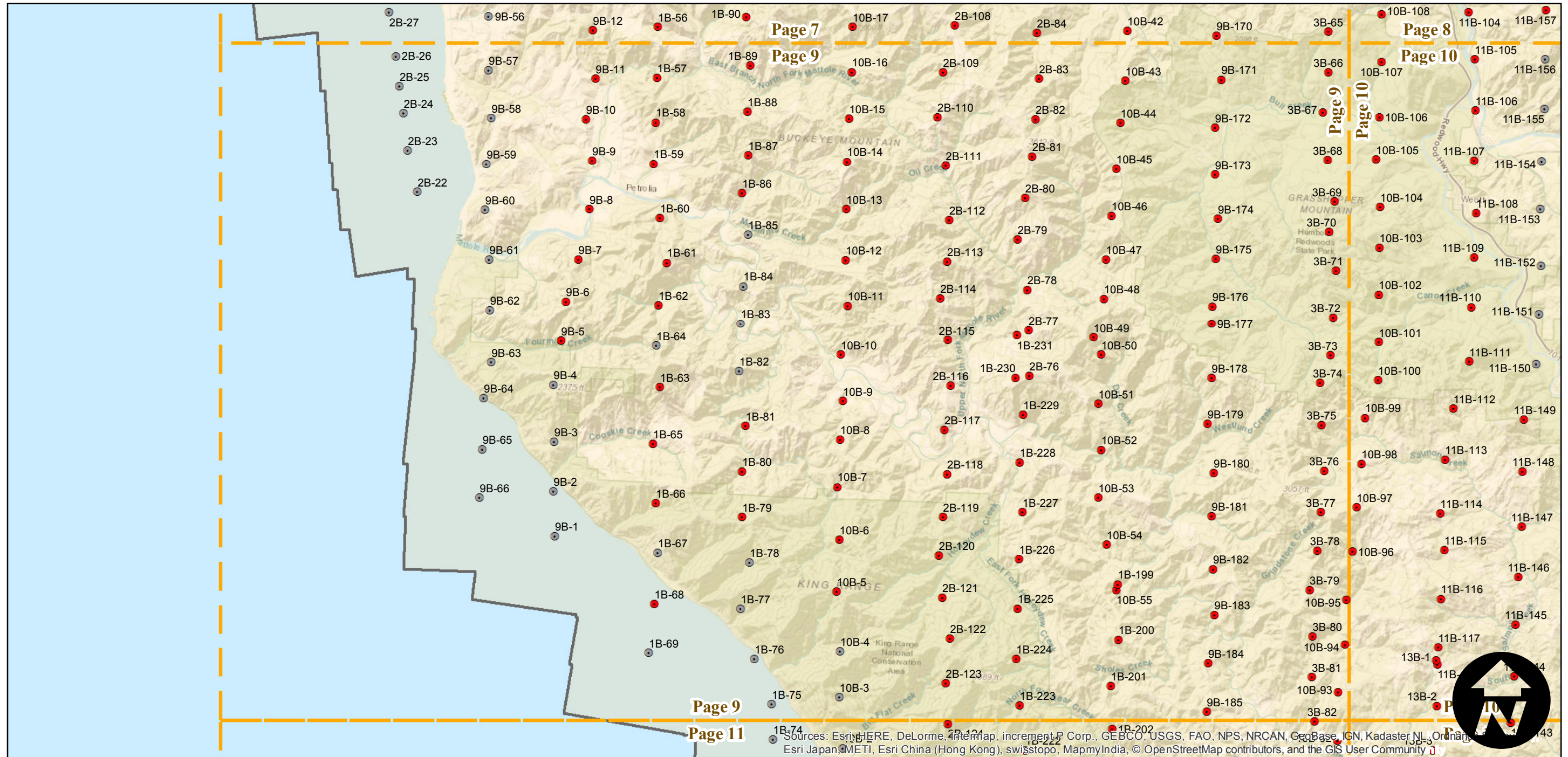
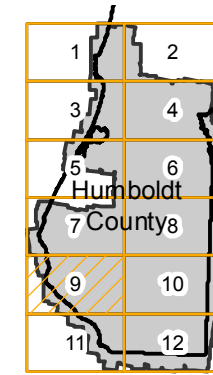
Counties: Humboldt, Mendocino
Flight date(s): 10-29-1941 to 7-30-1942
Scale: 1:20,000
Overlap: 60%

Complete Metadata:
<http://www.library.ucsb.edu/map-imagery-lab/aerial-photography-information>

Note: Coverage of mostly the eastern and southern portions of the county. Areas covered include Garberville, Rio Dell, Six Rivers National Forest, and McKinleyville.

- MIL owns frame
- MIL does not own frame

FLIGHT LOCATION



Sources: Esri, HERE, DeLorme, Intermap, increment P Corp., GEBCO, USGS, FAO, NPS, NRCAN, Geoplace, IGN, Kadaster NL, Ordnance Survey, Esri Japan, METI, Esri China (Hong Kong), swisstopo, MapmyIndia, © OpenStreetMap contributors, and the GIS User Community

CVL-1942

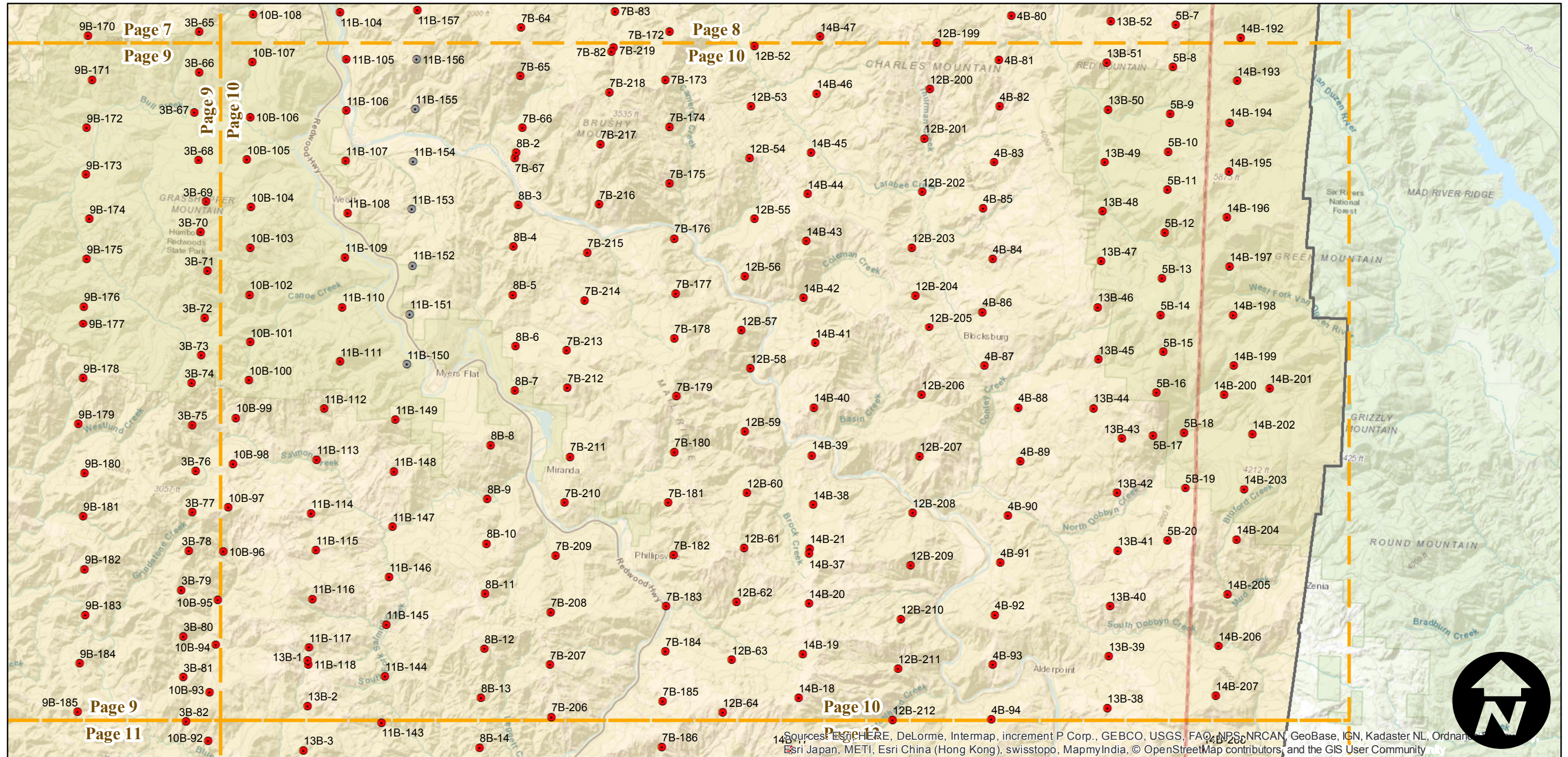
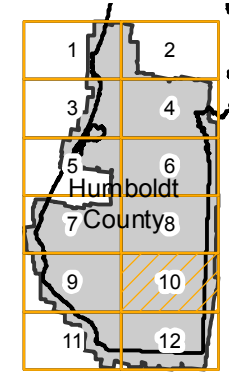
Counties: Humboldt, Mendocino
 Flight date(s): 10-29-1941 to 7-30-1942
 Scale: 1:20,000
 Overlap: 60%

Complete Metadata:
<http://www.library.ucsb.edu/map-imagery-lab/aerial-photography-information>

Note: Coverage of mostly the eastern and southern portions of the county. Areas covered include Garberville, Rio Dell, Six Rivers National Forest, and McKinleyville.

- MIL owns frame
- MIL does not own frame

FLIGHT LOCATION



Index to Aerial Photography
 Page 10 of 12

Scale of this index: 1:150,000

Sources: Esri, HERE, DeLorme, Intermap, increment P Corp., GEBCO, USGS, FAO, NPS, NRCAN, GeoBase, IGN, Kadaster NL, Ordnance Survey, Esri Japan, METI, Esri China (Hong Kong), swisstopo, MapmyIndia, © OpenStreetMap contributors, and the GIS User Community

CVL-1942

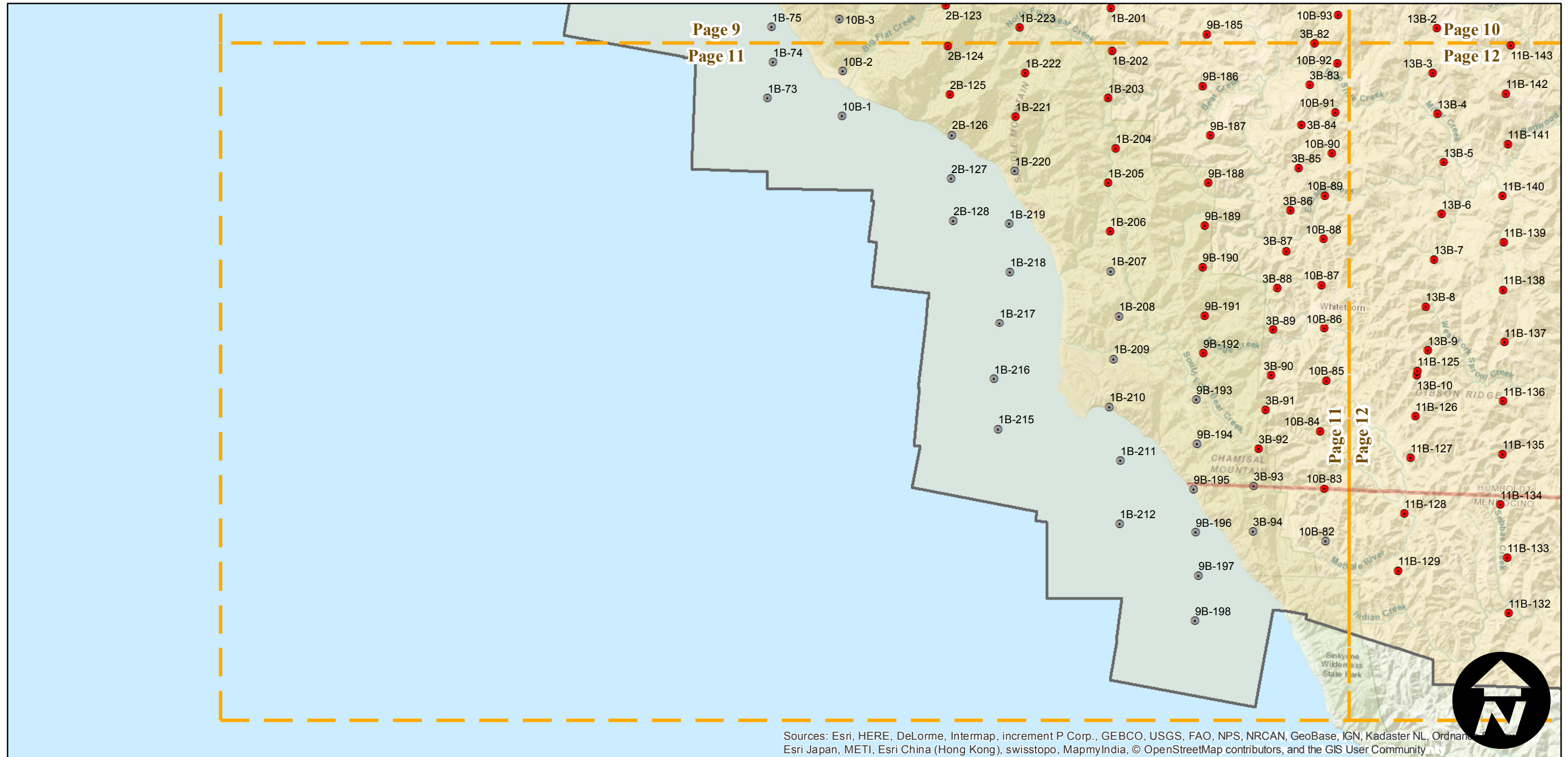
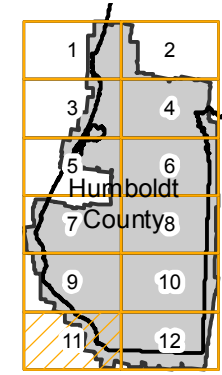
Counties: Humboldt, Mendocino
Flight date(s): 10-29-1941 to 7-30-1942
Scale: 1:20,000
Overlap: 60%

Complete Metadata:
<http://www.library.ucsb.edu/map-imagery-lab/aerial-photography-information>

Note: Coverage of mostly the eastern and southern portions of the county. Areas covered include Garberville, Rio Dell, Six Rivers National Forest, and McKinleyville.

- MIL owns frame
- MIL does not own frame

FLIGHT LOCATION



Sources: Esri, HERE, DeLorme, Intermap, increment P Corp., GEBCO, USGS, FAO, NPS, NRCAN, GeoBase, IGN, Kadaster NL, Ordnance Survey, Esri Japan, METI, Esri China (Hong Kong), swisstopo, MapmyIndia, © OpenStreetMap contributors, and the GIS User Community

0 2 4 8 Miles

Index to Aerial Photography
Page 11 of 12

Scale of this index: 1:150,000

CVL-1942

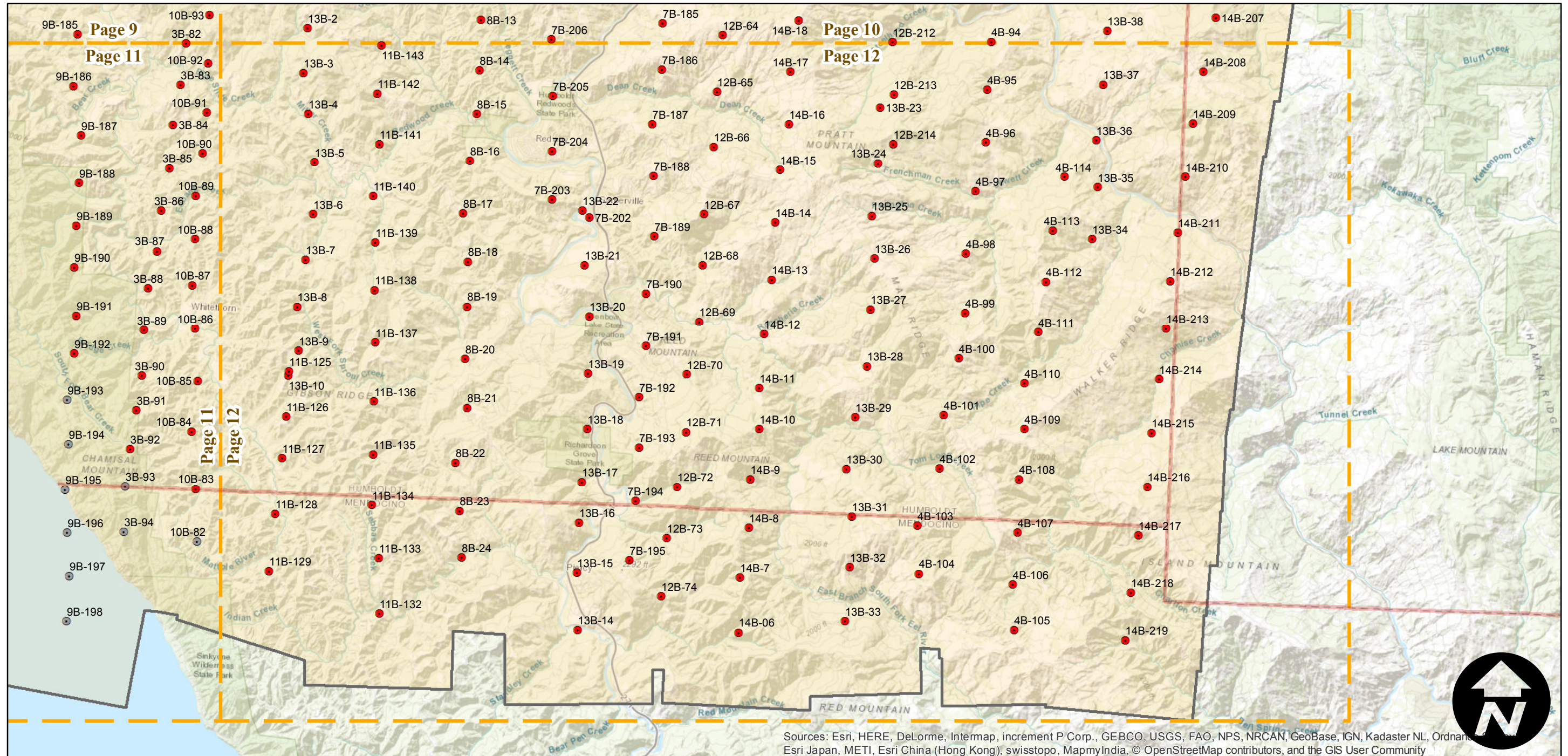
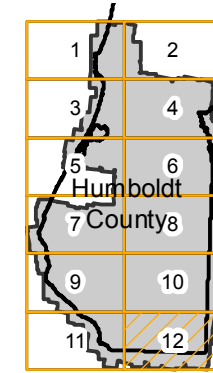
Counties: Humboldt, Mendocino
Flight date(s): 10-29-1941 to 7-30-1942
Scale: 1:20,000
Overlap: 60%

Complete Metadata:
<http://www.library.ucsb.edu/map-imagery-lab/aerial-photography-information>

Note: Coverage of mostly the eastern and southern portions of the county. Areas covered include Garberville, Rio Dell, Six Rivers National Forest, and McKinleyville.

- MIL owns frame
- MIL does not own frame

FLIGHT LOCATION



Sources: Esri, HERE, DeLorme, Intermap, increment P Corp., GEBCO, USGS, FAO, NPS, NRCAN, GeoBase, IGN, Kadaster NL, Ordnance Survey, Esri Japan, METI, Esri China (Hong Kong), swisstopo, MapmyIndia, © OpenStreetMap contributors, and the GIS User Community

