

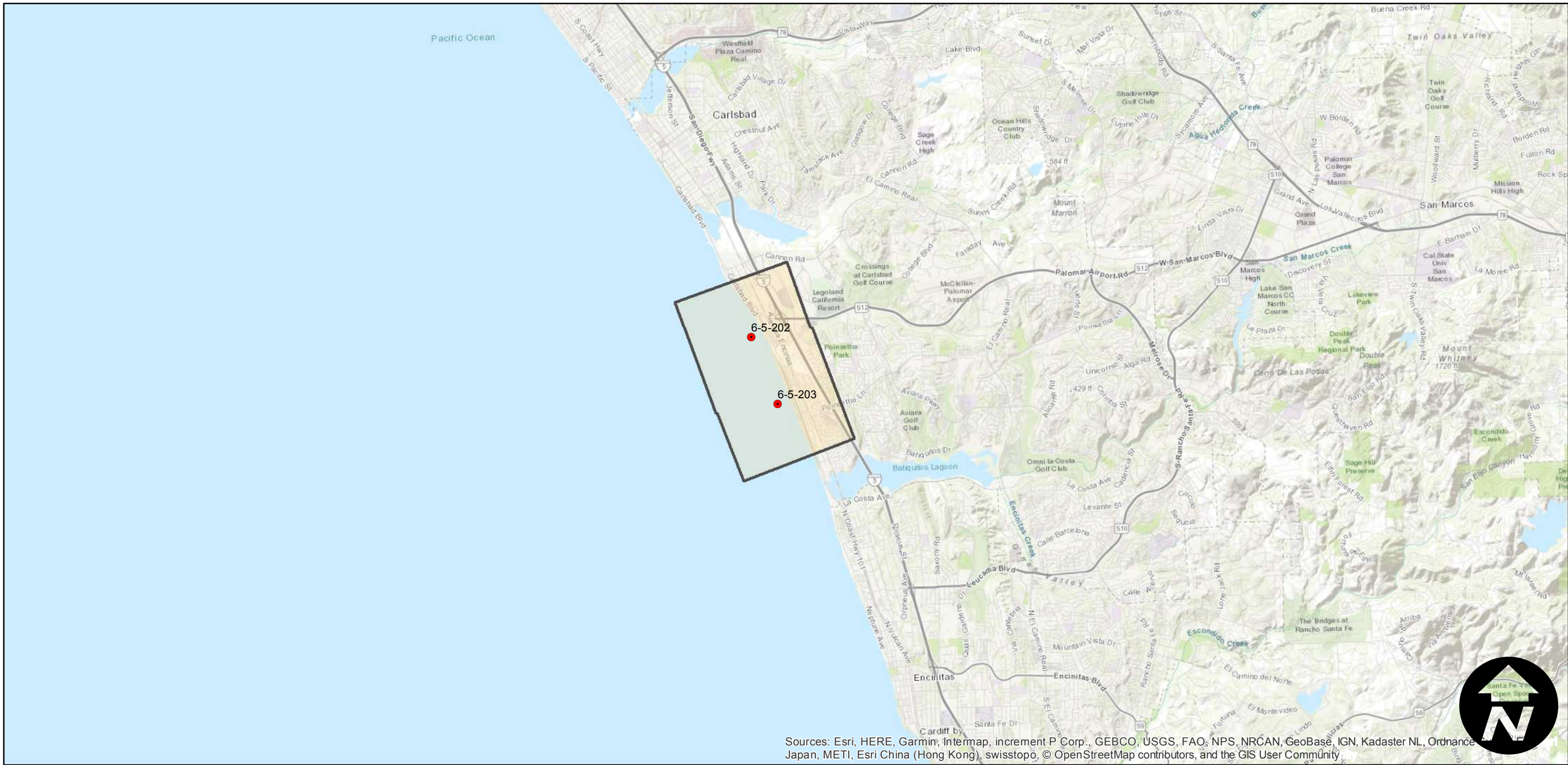
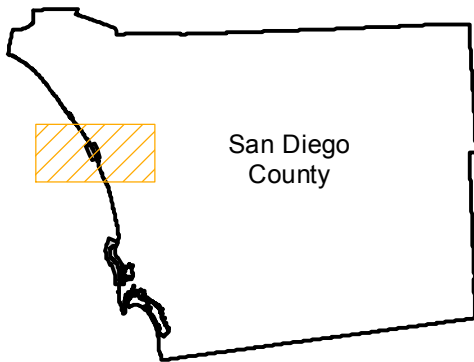
COAST-1961

Counties: San Diego
Flight date(s): 10-01-1961 to 10-31-1961
Scale: 1:12,000
Overlap: 40%

Complete Metadata:
<https://www.library.ucsb.edu/src/airphotos/aerial-photography-information>

Note: Coastline of South Carlsbad State Beach and La Jolla to Point Medanos. Original flight covered entire southern California coast. Flight number assigned by MIL staff. Producer unknown.

FLIGHT LOCATION



0 2 4 8 Miles

Index to Aerial Photography
Page 1 of 2

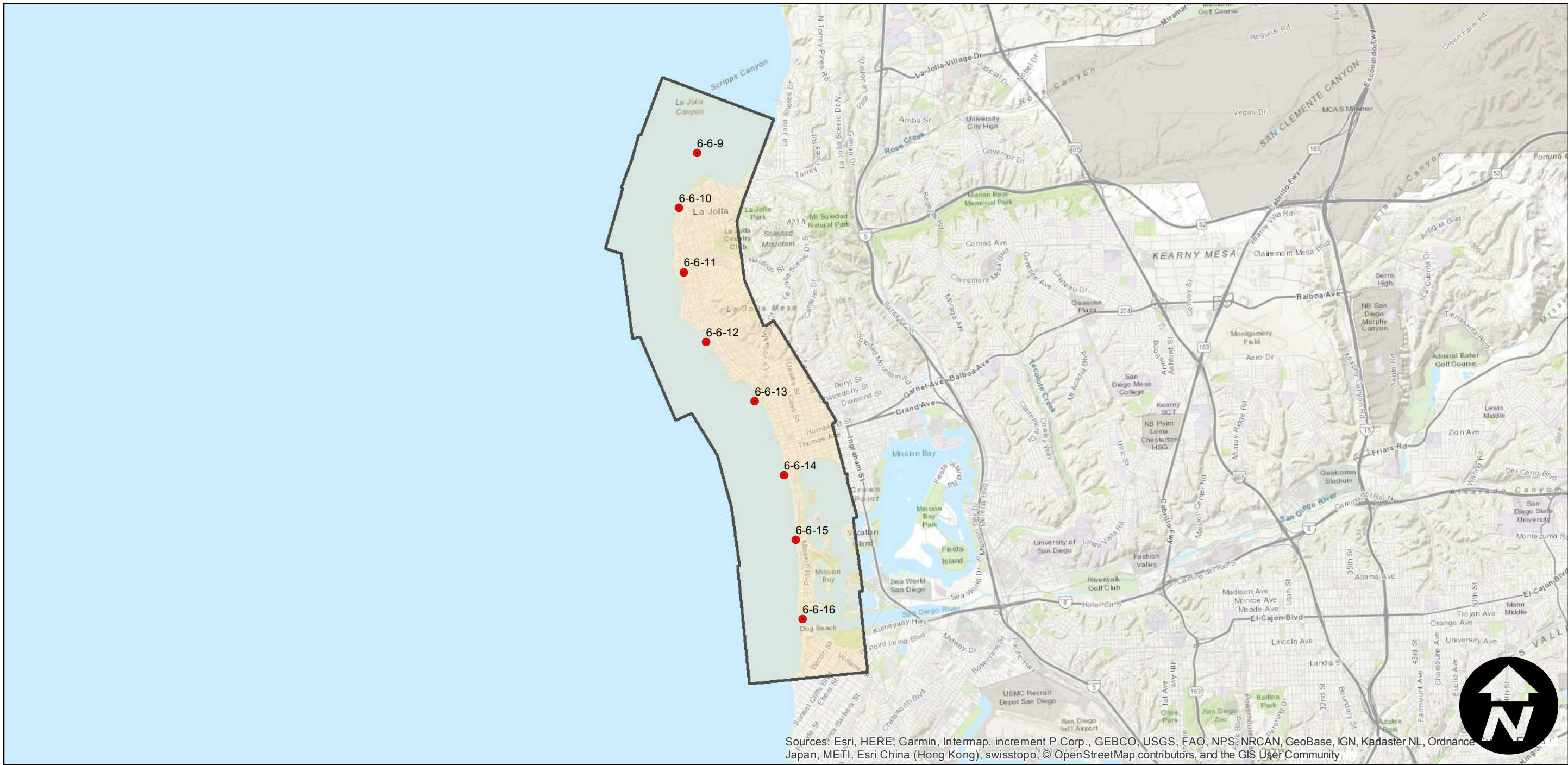
Scale of this index: 1:95,000

COAST-1961

Counties: San Diego
Flight date(s): 10-01-1961 to 10-31-1961
Scale: 1:12,000
Overlap: 40%

Complete Metadata:
<https://www.library.ucsb.edu/src/airphotos/aerial-photography-information>

Note: Coastline of South Carlsbad State Beach and La Jolla to Point Medanos. Original flight covered entire southern California coast. Flight number assigned by MIL staff. Producer unknown.



0 2 4 8 Miles

Index to Aerial Photography
Page 2 of 2

Scale of this index: 1:95,000