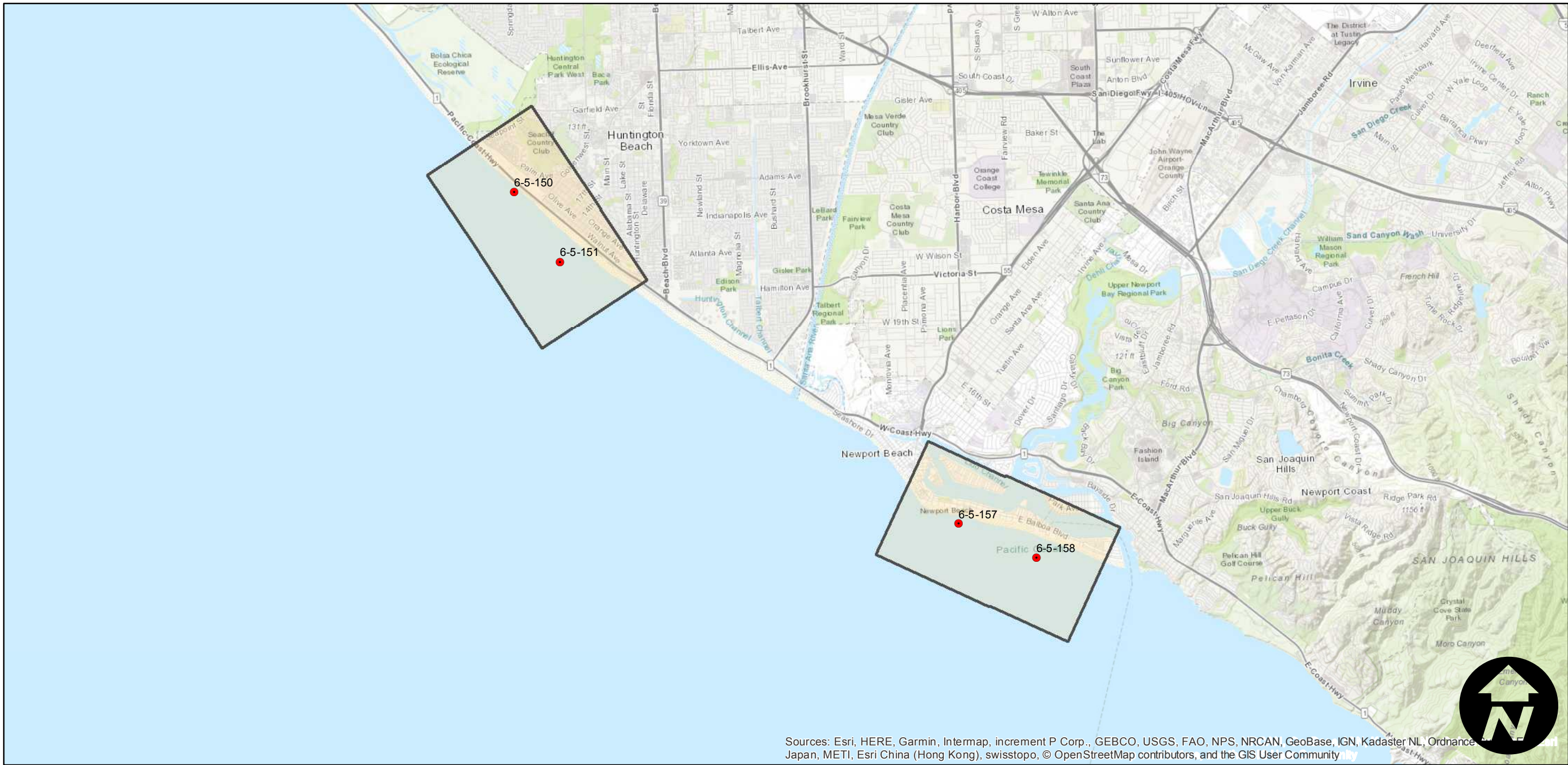
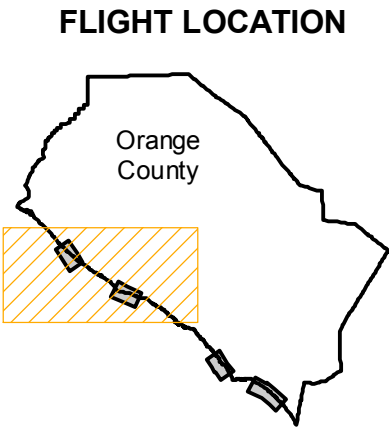


COAST-1961

Counties: Orange
Flight date(s): 10-01-1961 to 10-31-1961
Scale: 1:12,000
Overlap: 40%

Complete Metadata:
<https://www.library.ucsb.edu/src/airphotos/aerial-photography-information>

Note: Coastline of Huntington Beach, Balboa Peninsula, Monarch Beach, and Capistrano Beach to San Clemente.
Original flight covered entire southern California coast.
Flight number assigned by MIL staff. Producer unknown.



0 1 2 4 Miles

Index to Aerial Photography
Page 1 of 2

Scale of this index: 1:90,000

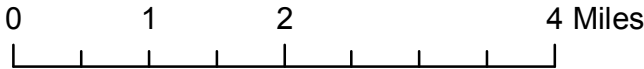
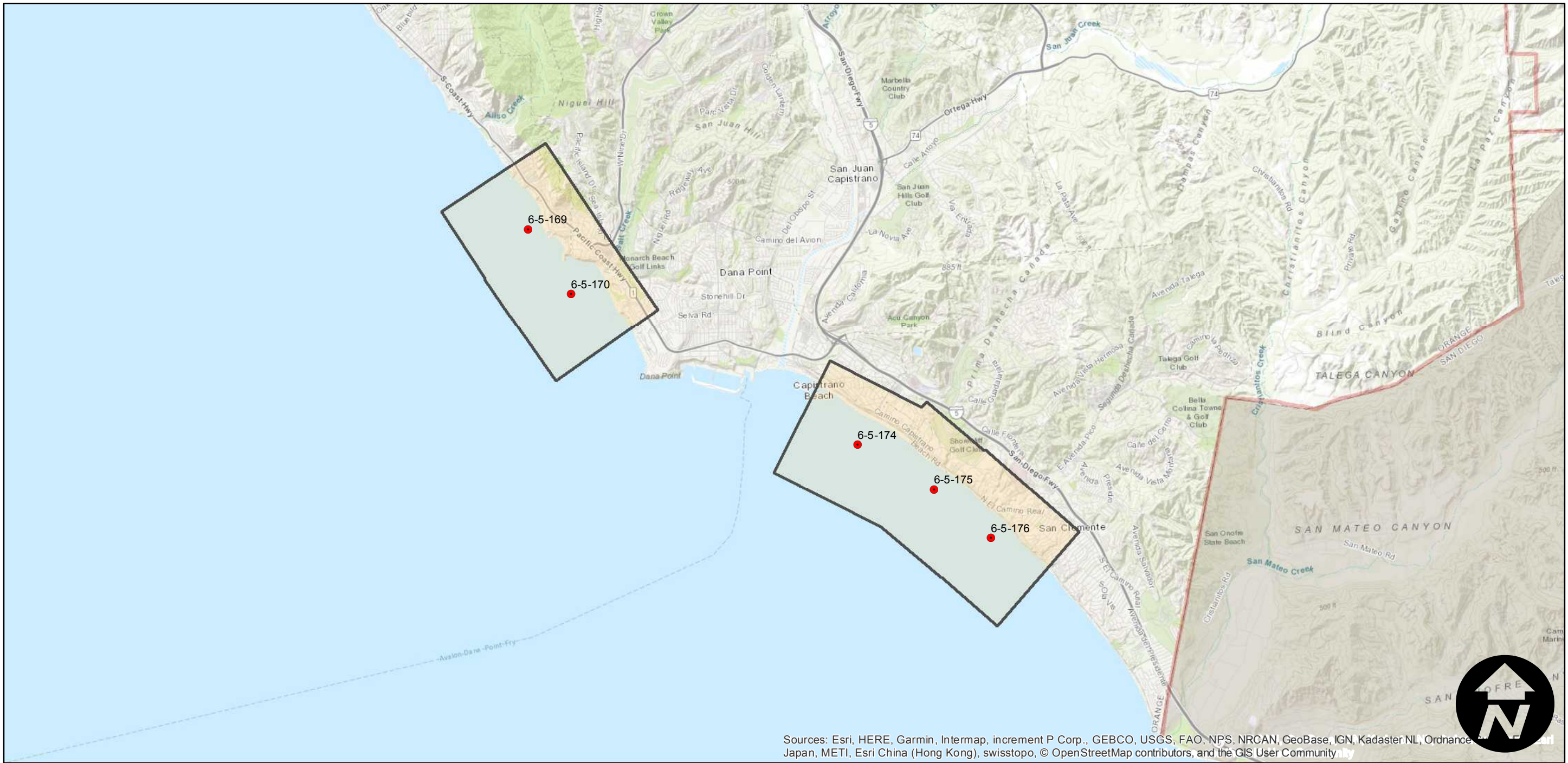
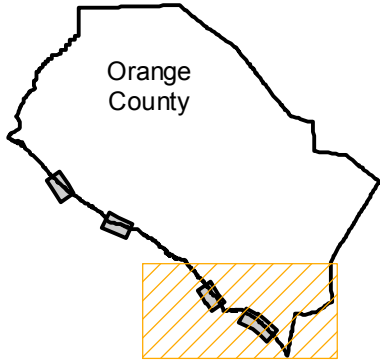
COAST-1961

Counties: Orange
Flight date(s): 10-01-1961 to 10-31-1961
Scale: 1:12,000
Overlap: 40%

Complete Metadata:
<https://www.library.ucsb.edu/src/airphotos/aerial-photography-information>

Note: Coastline of Huntington Beach, Balboa Peninsula, Monarch Beach, and Capistrano Beach to San Clemente.
Original flight covered entire southern California coast.
Flight number assigned by MIL staff. Producer unknown.

FLIGHT LOCATION



Sources: Esri, HERE, Garmin, Intermap, increment P Corp., GEBCO, USGS, FAO, NPS, NRCAN, GeoBase, IGN, Kadaster NL, Ordnance Survey, Esri Japan, METI, Esri China (Hong Kong), swisstopo, © OpenStreetMap contributors, and the GIS User Community