

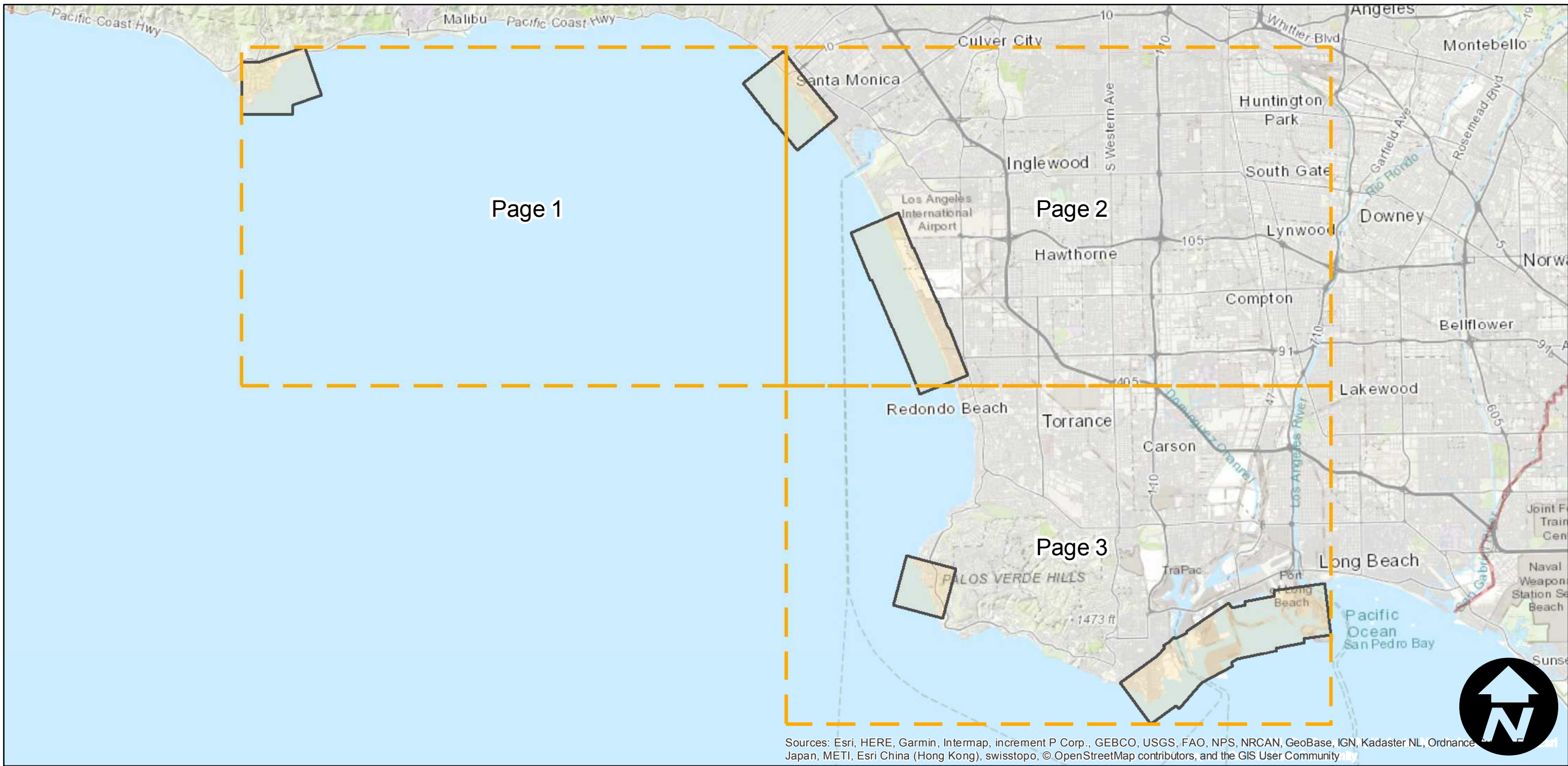
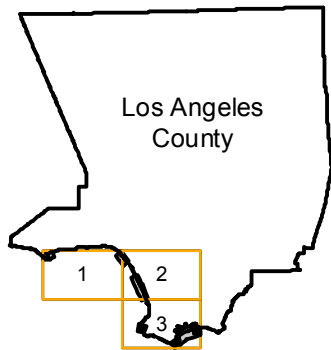
# COAST-1961

Counties: Los Angeles  
Flight date(s): 10-01-1961 to 10-31-1961  
Scale: 1:12,000  
Overlap: 0-40%

Complete Metadata:  
<https://www.library.ucsb.edu/src/airphotos/aerial-photography-information>

Note: Coastline of Point Dume, Santa Monica to Venice Beach, Dockweiler Beach to Hermosa Beach, Lunada Bay to Golden Cove, and Point Fermin to Port of Long Beach. Original flight covered entire southern California coast. Flight number assigned by MIL staff. Producer unknown.

## FLIGHT LOCATION



0 4 8 16 Miles

Index to Aerial Photography  
Page Key

Scale of this index: 1:220,000

# COAST-1961

Counties: Los Angeles  
Flight date(s): 10-01-1961 to 10-31-1961  
Scale: 1:12,000  
Overlap: 0-40%

Complete Metadata:  
<https://www.library.ucsb.edu/src/airphotos/aerial-photography-information>

Note: Coastline of Point Dume, Santa Monica to Venice Beach, Dockweiler Beach to Hermosa Beach, Lunada Bay to Golden Cove, and Point Fermin to Port of Long Beach. Original flight covered entire southern California coast. Flight number assigned by MIL staff. Producer unknown.

## FLIGHT LOCATION



0 2 4 8 Miles

Index to Aerial Photography  
Page 1 of 3

Scale of this index: 1:110,000



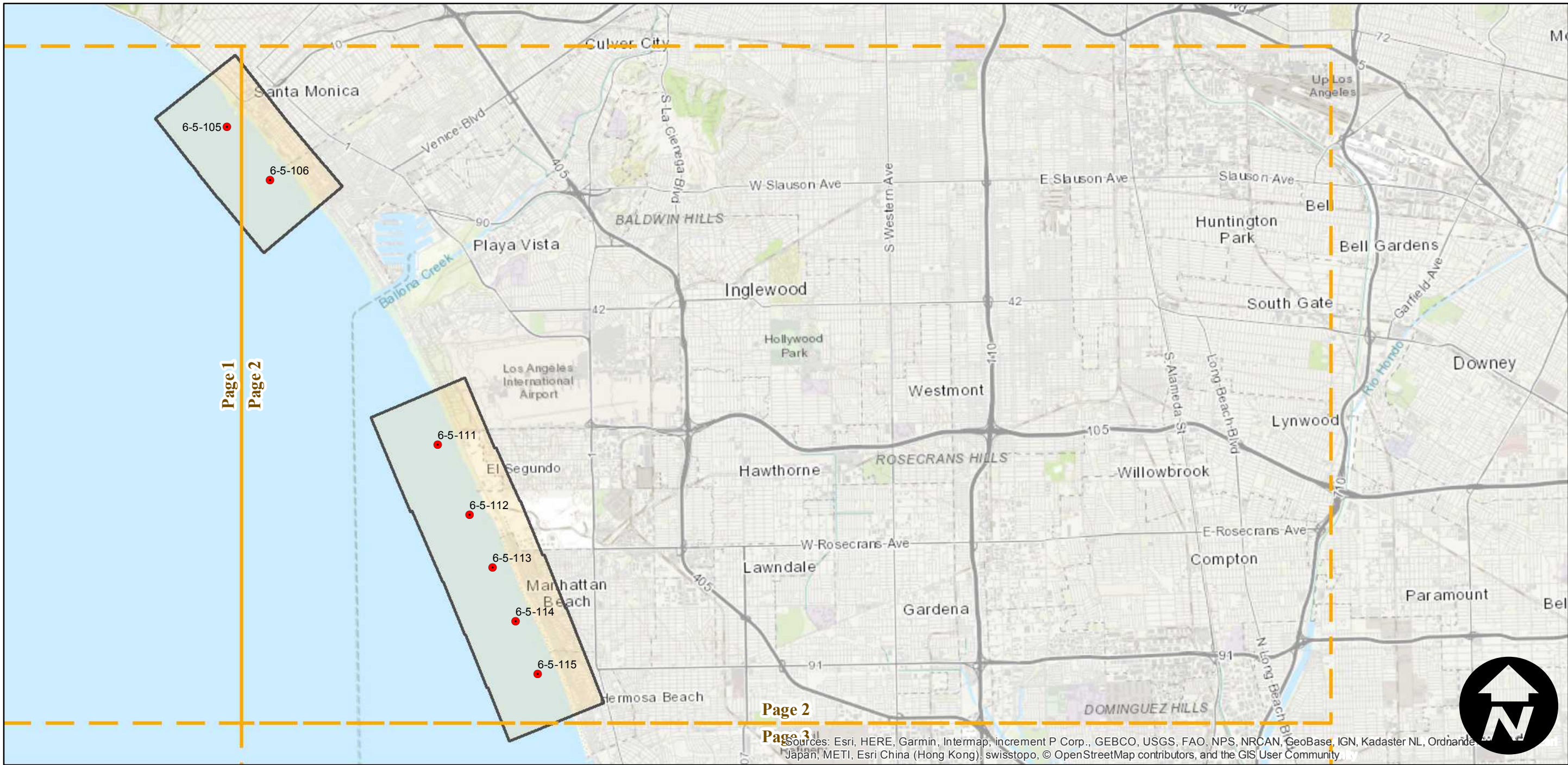
# COAST-1961

Counties: Los Angeles  
Flight date(s): 10-01-1961 to 10-31-1961  
Scale: 1:12,000  
Overlap: 0-40%

Complete Metadata:  
<https://www.library.ucsb.edu/src/airphotos/aerial-photography-information>

Note: Coastline of Point Dume, Santa Monica to Venice Beach, Dockweiler Beach to Hermosa Beach, Lunada Bay to Golden Cove, and Point Fermin to Port of Long Beach.  
Original flight covered entire southern California coast.  
Flight number assigned by MIL staff. Producer unknown.

## FLIGHT LOCATION



0 2 4 8 Miles

Index to Aerial Photography  
Page 2 of 3

Scale of this index: 1:110,000



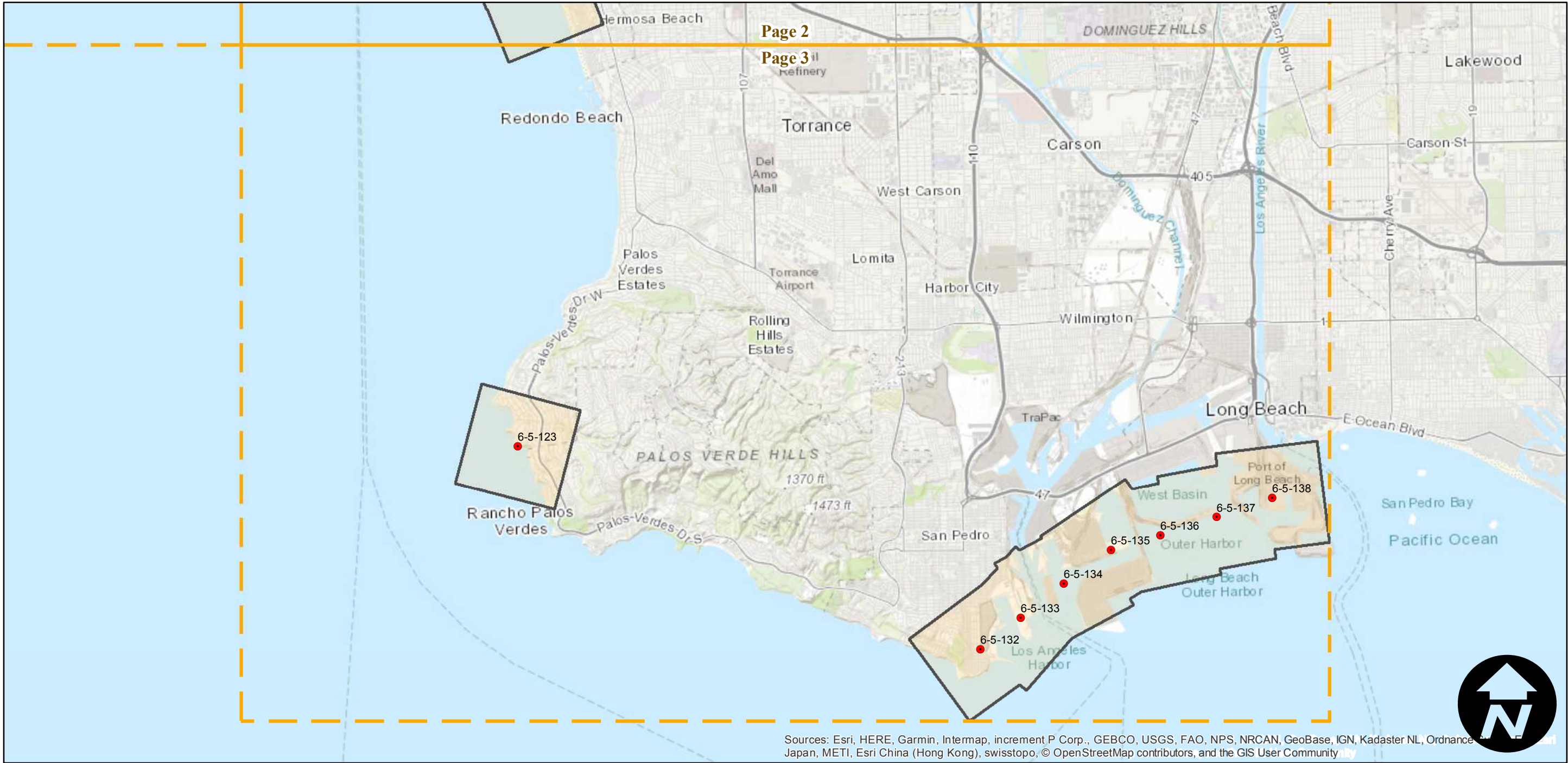
# COAST-1961

Counties: Los Angeles  
Flight date(s): 10-01-1961 to 10-31-1961  
Scale: 1:12,000  
Overlap: 0-40%

Complete Metadata:  
<https://www.library.ucsb.edu/src/airphotos/aerial-photography-information>

Note: Coastline of Point Dume, Santa Monica to Venice Beach, Dockweiler Beach to Hermosa Beach, Lunada Bay to Golden Cove, and Point Fermin to Port of Long Beach.  
Original flight covered entire southern California coast.  
Flight number assigned by MIL staff. Producer unknown.

## FLIGHT LOCATION



0 2 4 8 Miles

Index to Aerial Photography  
Page 3 of 3

Scale of this index: 1:110,000