

CAS-SUT-2365

Counties: Sutter, Colusa, Butte, Sacramento, Yolo, Yuba

Flight date(s): 07-23-1968 to 08-23-1968

Scale: 1:20,000

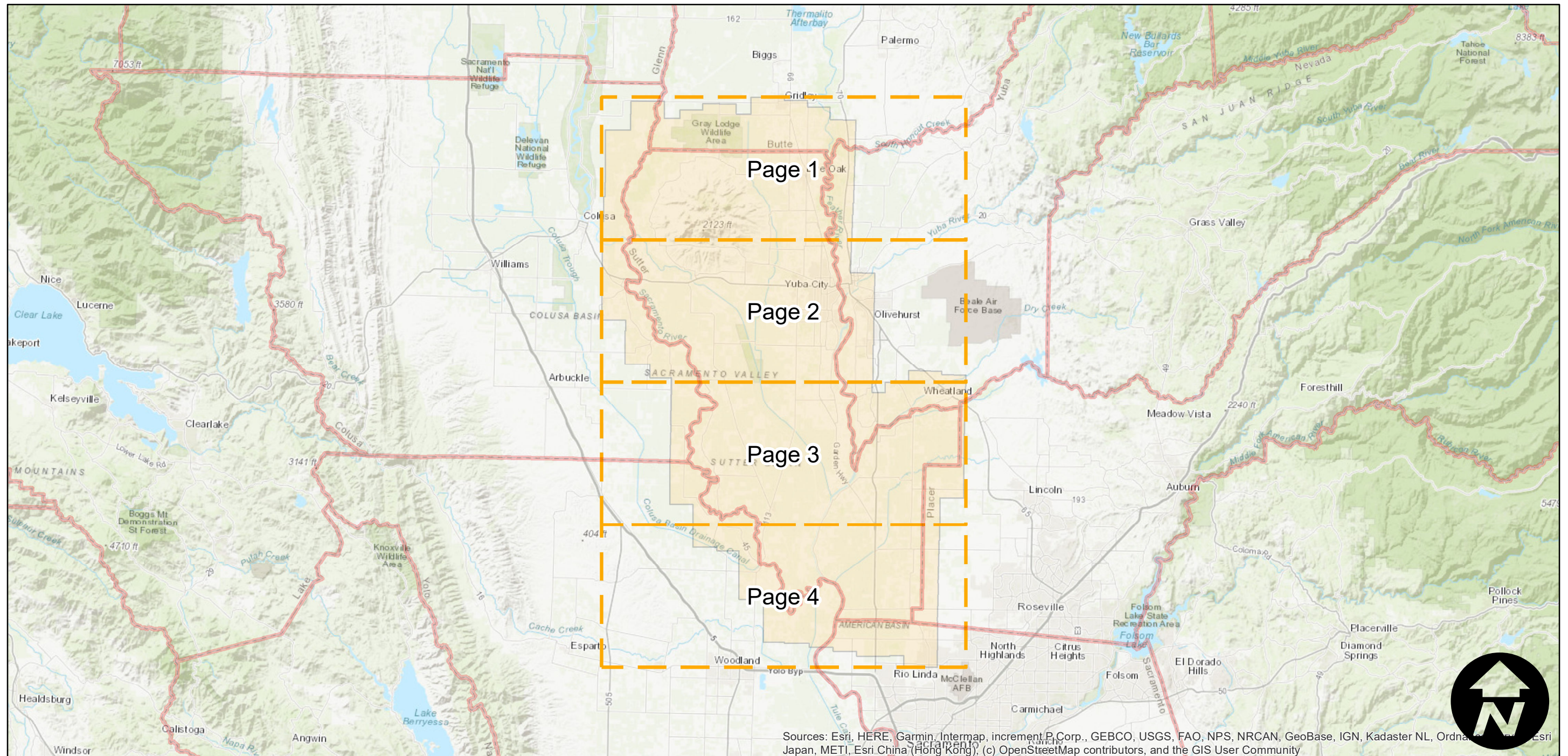
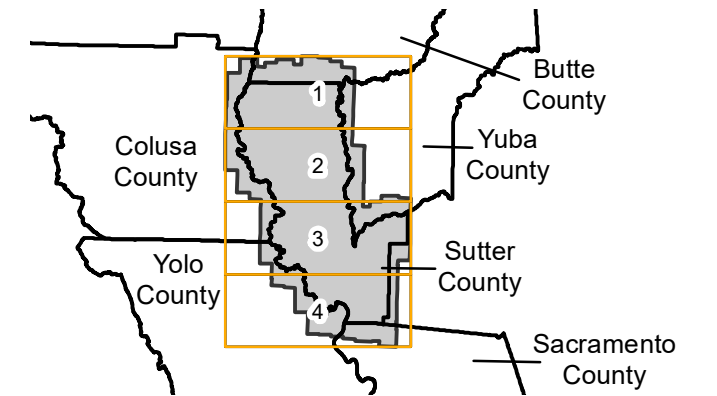
Overlap: 60%

Complete Metadata:

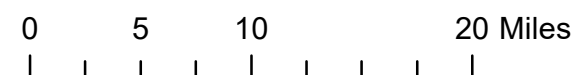
<https://www.library.ucsb.edu/src/airphotos/aerial-photography-information>

Note: Incomplete holdings. See index sheets.

FLIGHT LOCATION



Sources: Esri, HERE, Garmin, Intermap, increment P Corp., GEBCO, USGS, FAO, NPS, NRCAN, GeoBase, IGN, Kadaster NL, Ordnance Survey, Esri Japan, METI, Esri China (Hong Kong), (c) OpenStreetMap contributors, and the GIS User Community



Index to Aerial Photography
Page Key

Scale of this index: 1:550,000

CAS-SUT-2365

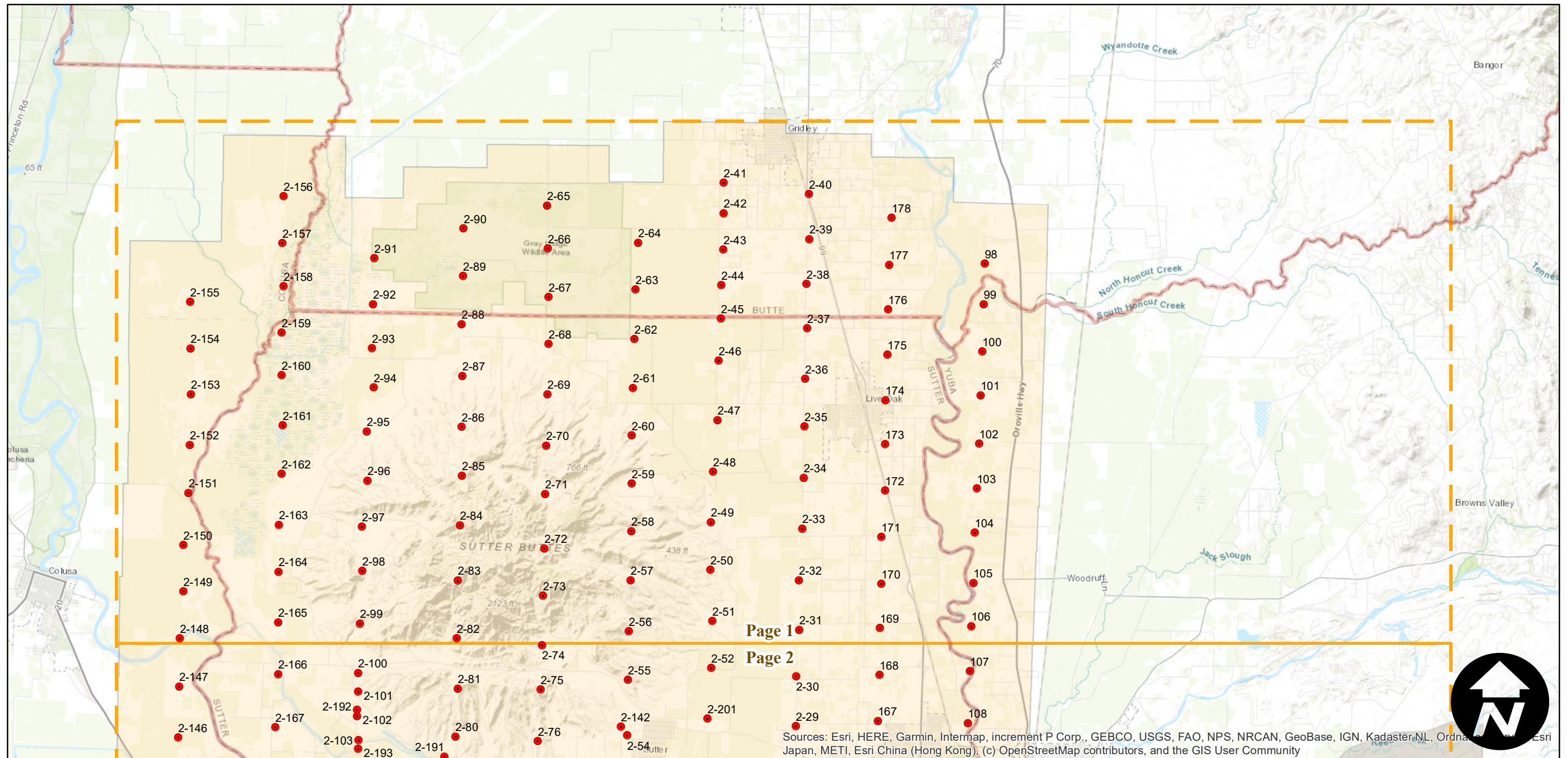
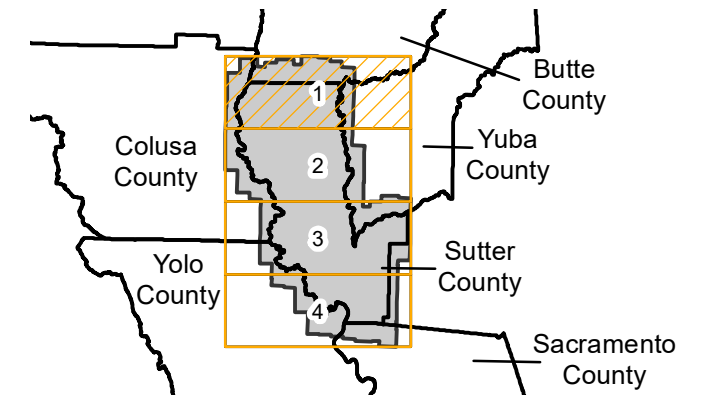
Counties: Sutter, Colusa, Butte, Sacramento, Yolo, Yuba
 Flight date(s): 07-23-1968 to 08-23-1968
 Scale: 1:20,000
 Overlap: 60%

Complete Metadata:
<https://www.library.ucsb.edu/src/airphotos/aerial-photography-information>

Note: Incomplete holdings. See index sheets.

- MIL owns frame
- MIL does not own frame

FLIGHT LOCATION



Sources: Esri, HERE, Garmin, Intermap, increment P Corp., GEBCO, USGS, FAO, NPS, NRCAN, GeoBase, IGN, Kadaster NL, Ordnance Survey, Esri Japan, METI, Esri China (Hong Kong), (c) OpenStreetMap contributors, and the GIS User Community

0 2 4 8 Miles

Index to Aerial Photography
 Page 1 of 4

Scale of this index: 1:150,000

CAS-SUT-2365

Counties: Sutter, Colusa, Butte, Sacramento, Yolo, Yuba

Flight date(s): 07-23-1968 to 08-23-1968

Scale: 1:20,000

Overlap: 60%

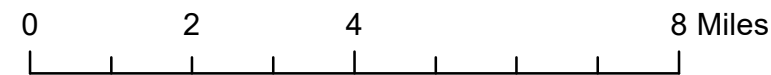
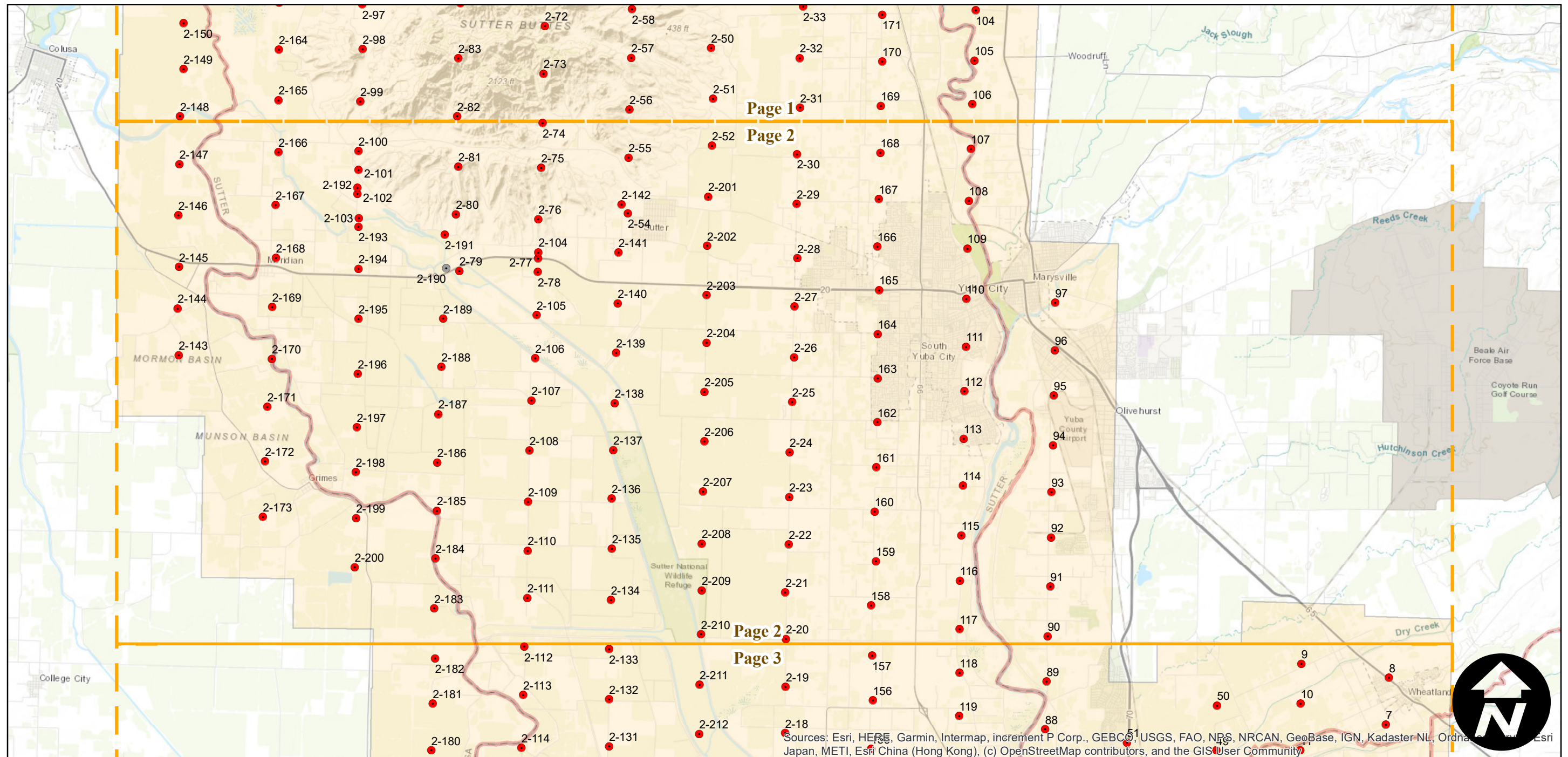
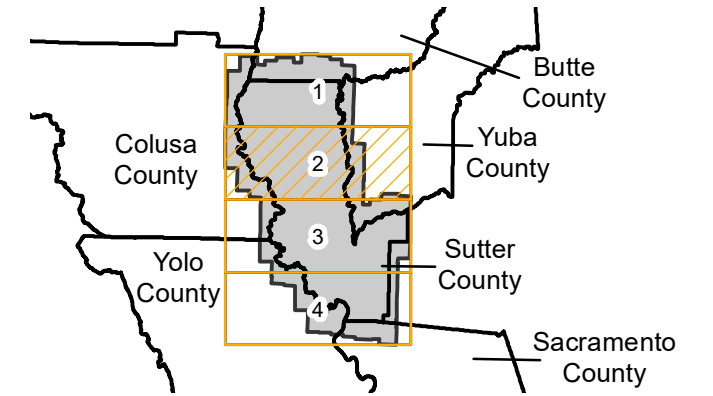
Complete Metadata:

<https://www.library.ucsb.edu/src/airphotos/aerial-photography-information>

Note: Incomplete holdings. See index sheets.

- MIL owns frame
- MIL does not own frame

FLIGHT LOCATION



Sources: Esri, HERE, Garmin, Intermap, increment P Corp., GEBCO, USGS, FAO, NRS, NRCAN, GeoBase, IGN, Kadaster NL, Ordnance Survey, Esri Japan, METI, Esri China (Hong Kong), (c) OpenStreetMap contributors, and the GIS User Community

CAS-SUT-2365

Counties: Sutter, Colusa, Butte, Sacramento, Yolo, Yuba

Flight date(s): 07-23-1968 to 08-23-1968

Scale: 1:20,000

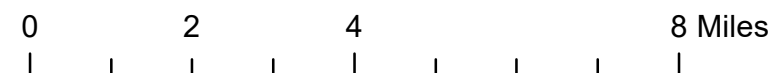
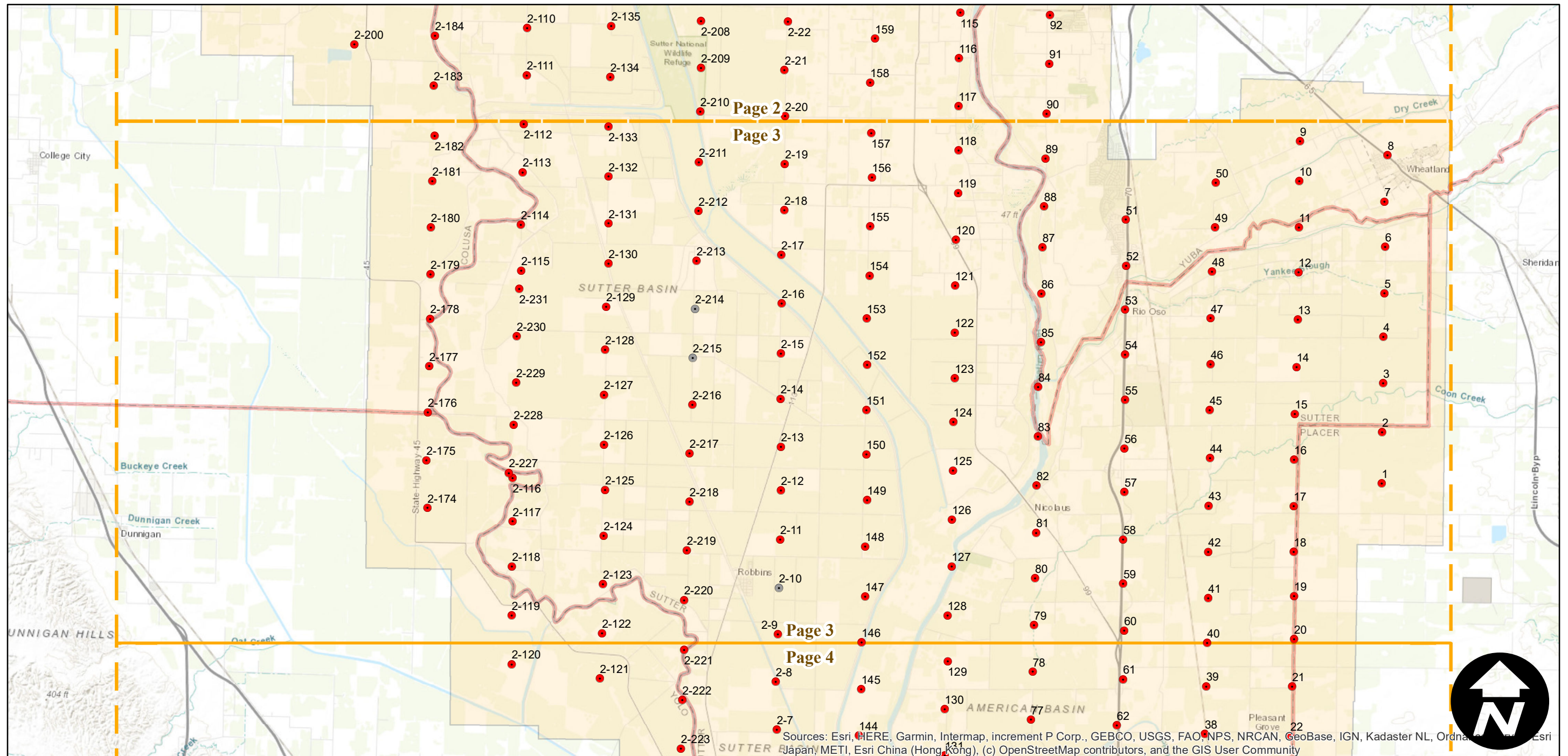
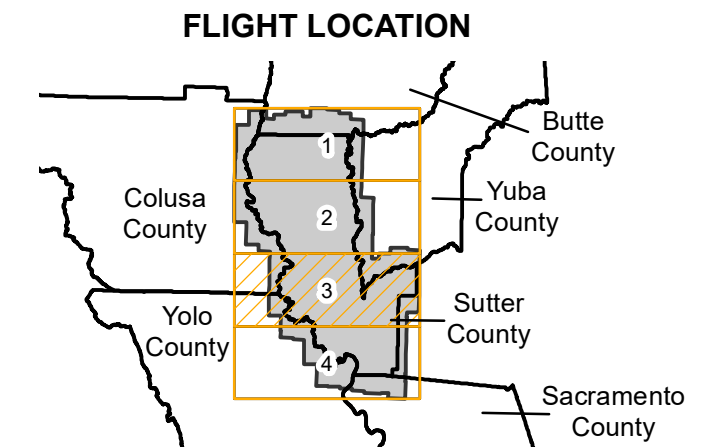
Overlap: 60%

Complete Metadata:

<https://www.library.ucsb.edu/src/airphotos/aerial-photography-information>

Note: Incomplete holdings. See index sheets.

- MIL owns frame
- MIL does not own frame



Sources: Esri, HERE, Garmin, Intermap, increment P Corp., GEBCO, USGS, FAO, NPS, NRCAN, GeoBase, IGN, Kadaster NL, Ordnance Survey, Esri Japan, METI, Esri China (Hong Kong), (c) OpenStreetMap contributors, and the GIS User Community

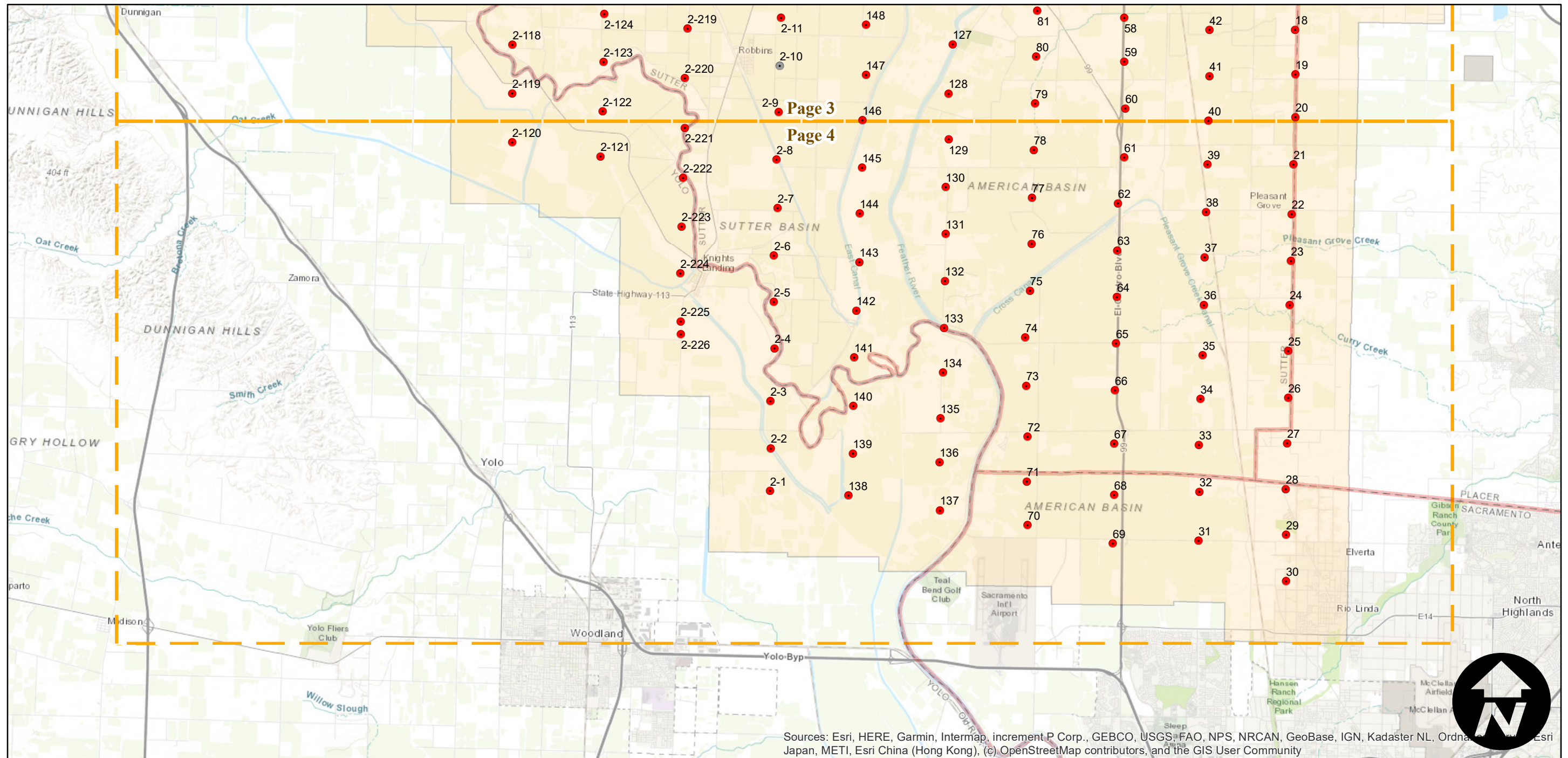
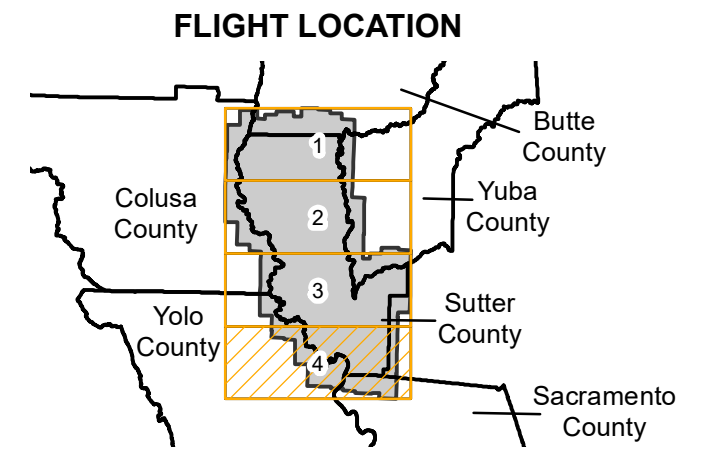
CAS-SUT-2365

Counties: Sutter, Colusa, Butte, Sacramento, Yolo, Yuba
 Flight date(s): 07-23-1968 to 08-23-1968
 Scale: 1:20,000
 Overlap: 60%

Complete Metadata:
<https://www.library.ucsb.edu/src/airphotos/aerial-photography-information>

Note: Incomplete holdings. See index sheets.

- MIL owns frame
- MIL does not own frame



Sources: Esri, HERE, Garmin, Intermap, increment P Corp., GEBCO, USGS, FAO, NPS, NRCAN, GeoBase, IGN, Kadaster NL, Ordnance Survey, Esri Japan, METI, Esri China (Hong Kong), (c) OpenStreetMap contributors, and the GIS User Community

