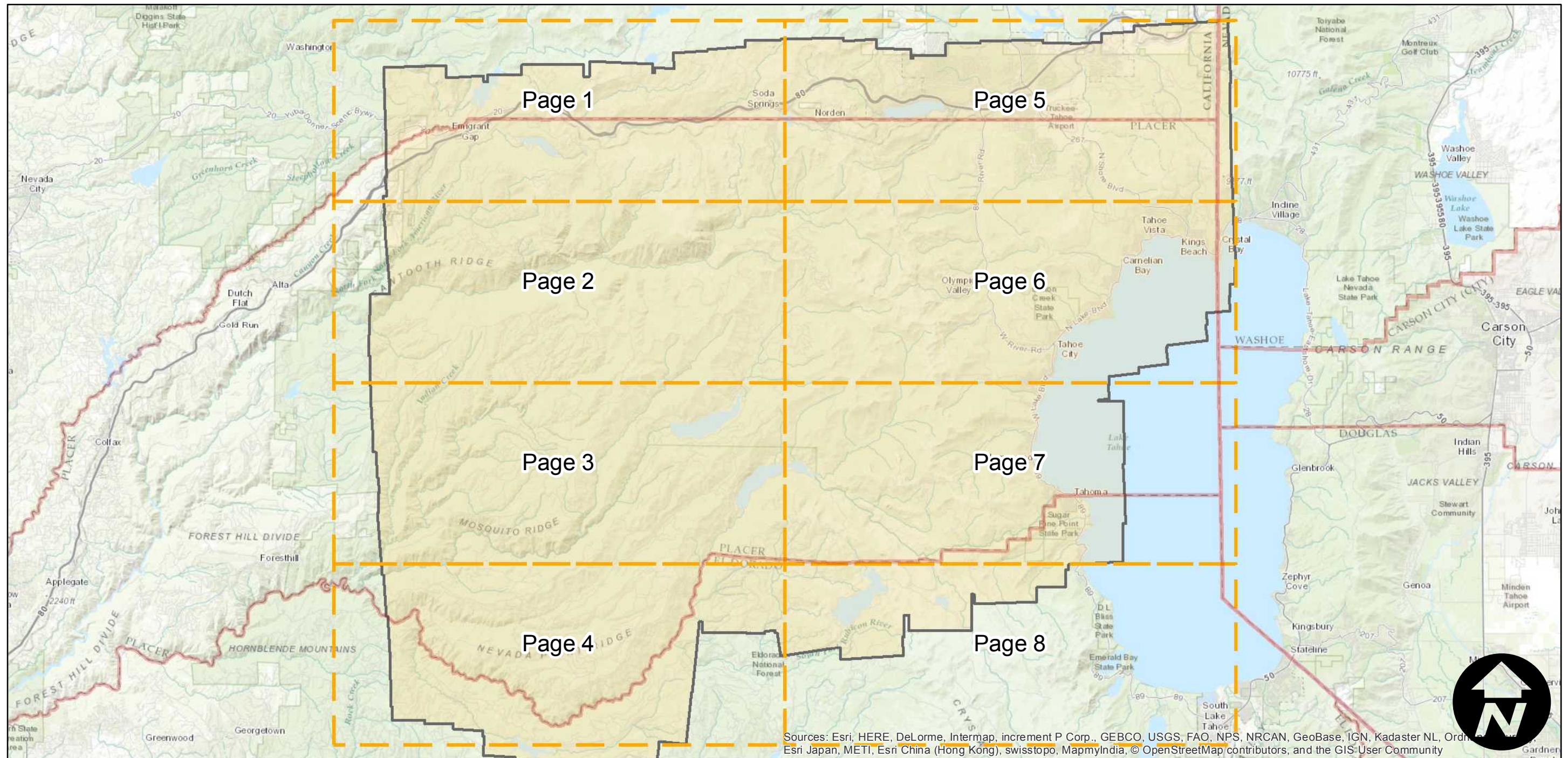
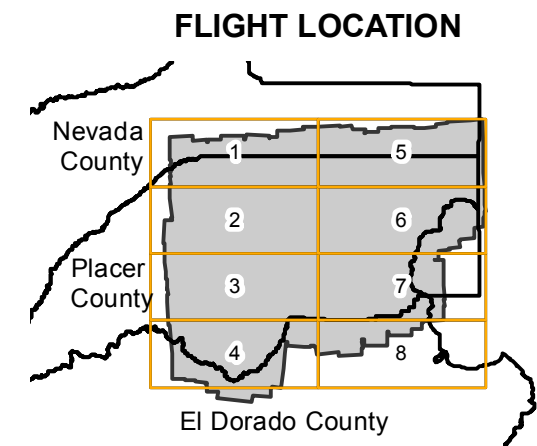


CAS-PLA (1:15K)

Counties: Placer, Nevada, El Dorado
Flight date(s): 07-28-1962 to 11-29-1962
Scale: 1:15,840
Overlap: 60%

Note: Western 1/2 of county at 1:20,000. Eastern 1/2 of county at 1:15,840.

Complete Metadata:
<http://www.library.ucsb.edu/map-imagery-lab/aerial-photography-information>



Sources: Esri, HERE, DeLorme, Intermap, increment P Corp., GEBCO, USGS, FAO, NPS, NRCAN, GeoBase, IGN, Kadaster NL, Ordnance Survey, Esri Japan, METI, Esri China (Hong Kong), swisstopo, MapmyIndia, © OpenStreetMap contributors, and the GIS User Community

0 5 10 20 Miles

Index to Aerial Photography
Page Key

Scale of this index: 1:300,000

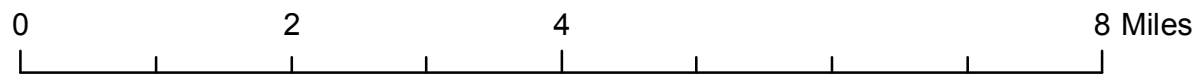
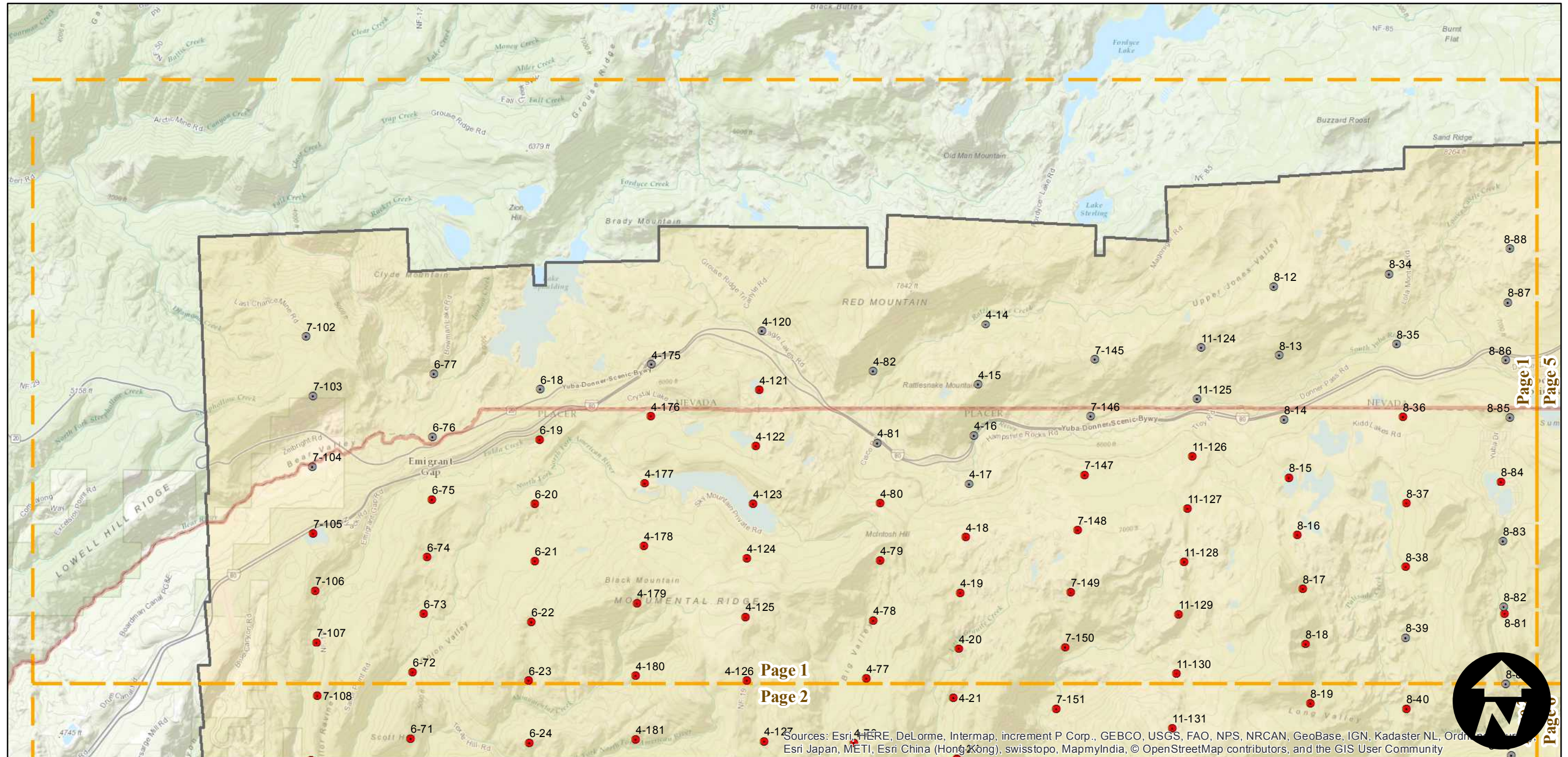
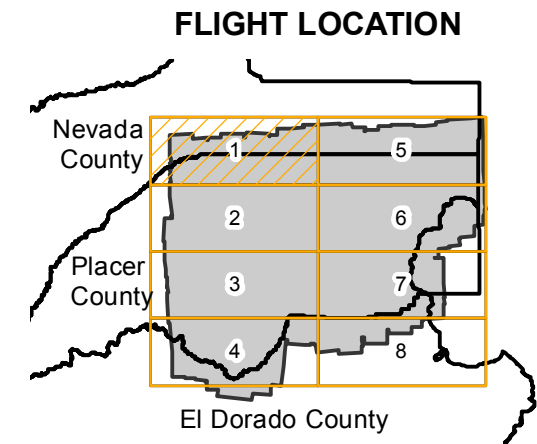
CAS-PLA (1:15K)

Counties: Placer, Nevada, El Dorado
 Flight date(s): 07-28-1962 to 11-29-1962
 Scale: 1:15,840
 Overlap: 60%

Complete Metadata:
<http://www.library.ucsb.edu/map-imagery-lab/aerial-photography-information>

Note: Western 1/2 of county at 1:20,000. Eastern 1/2 of county at 1:15,840.

- MIL owns frame
- MIL does not own frame



Index to Aerial Photography
 Page 1 of 8

Scale of this index: 1:90,000

Sources: Esri, HERE, DeLorme, Intermap, increment P Corp., GEBCO, USGS, FAO, NPS, NRCAN, GeoBase, IGN, Kadaster NL, Ordnance Survey, Esri Japan, METI, Esri China (Hong Kong), swisstopo, MapmyIndia, © OpenStreetMap contributors, and the GIS User Community



Page 1
 Page 5
 Page 4
 Page 3

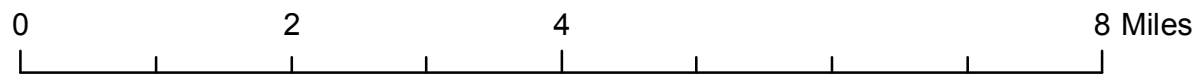
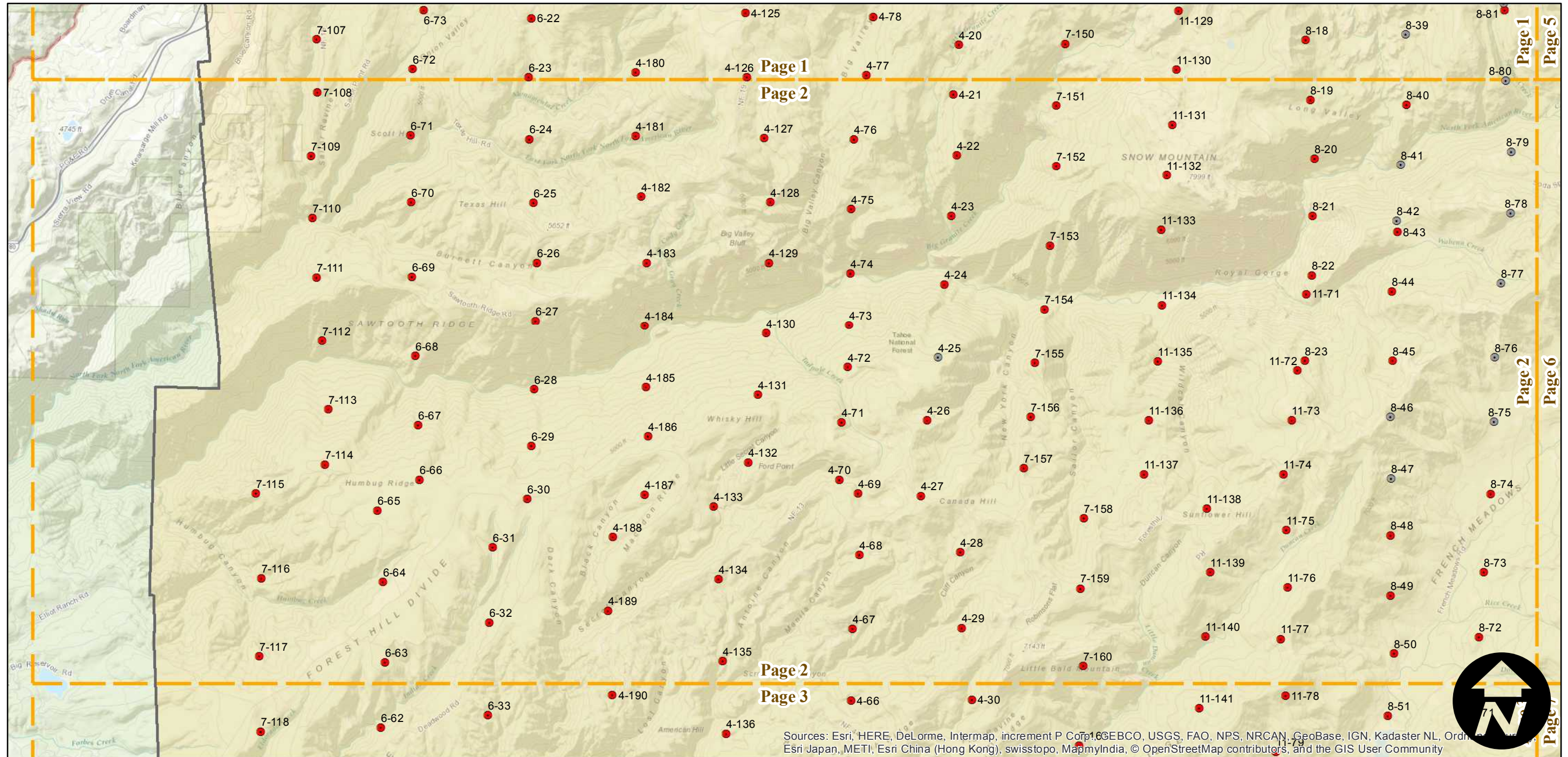
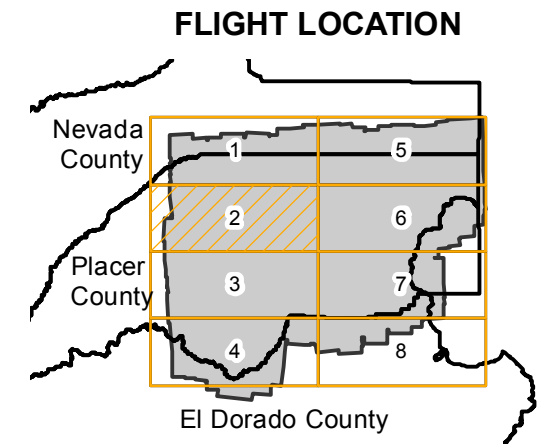
CAS-PLA (1:15K)

Counties: Placer, Nevada, El Dorado
 Flight date(s): 07-28-1962 to 11-29-1962
 Scale: 1:15,840
 Overlap: 60%

Complete Metadata:
<http://www.library.ucsb.edu/map-imagery-lab/aerial-photography-information>

Note: Western 1/2 of county at 1:20,000. Eastern 1/2 of county at 1:15,840.

- MIL owns frame
- MIL does not own frame



Index to Aerial Photography
 Page 2 of 8

Scale of this index: 1:90,000

Sources: Esri, HERE, DeLorme, Intermap, increment P Corp., GEBCO, USGS, FAO, NPS, NRCAN, GeoBase, IGN, Kadaster NL, Ordnance Survey, Esri Japan, METI, Esri China (Hong Kong), swisstopo, MapmyIndia, © OpenStreetMap contributors, and the GIS User Community

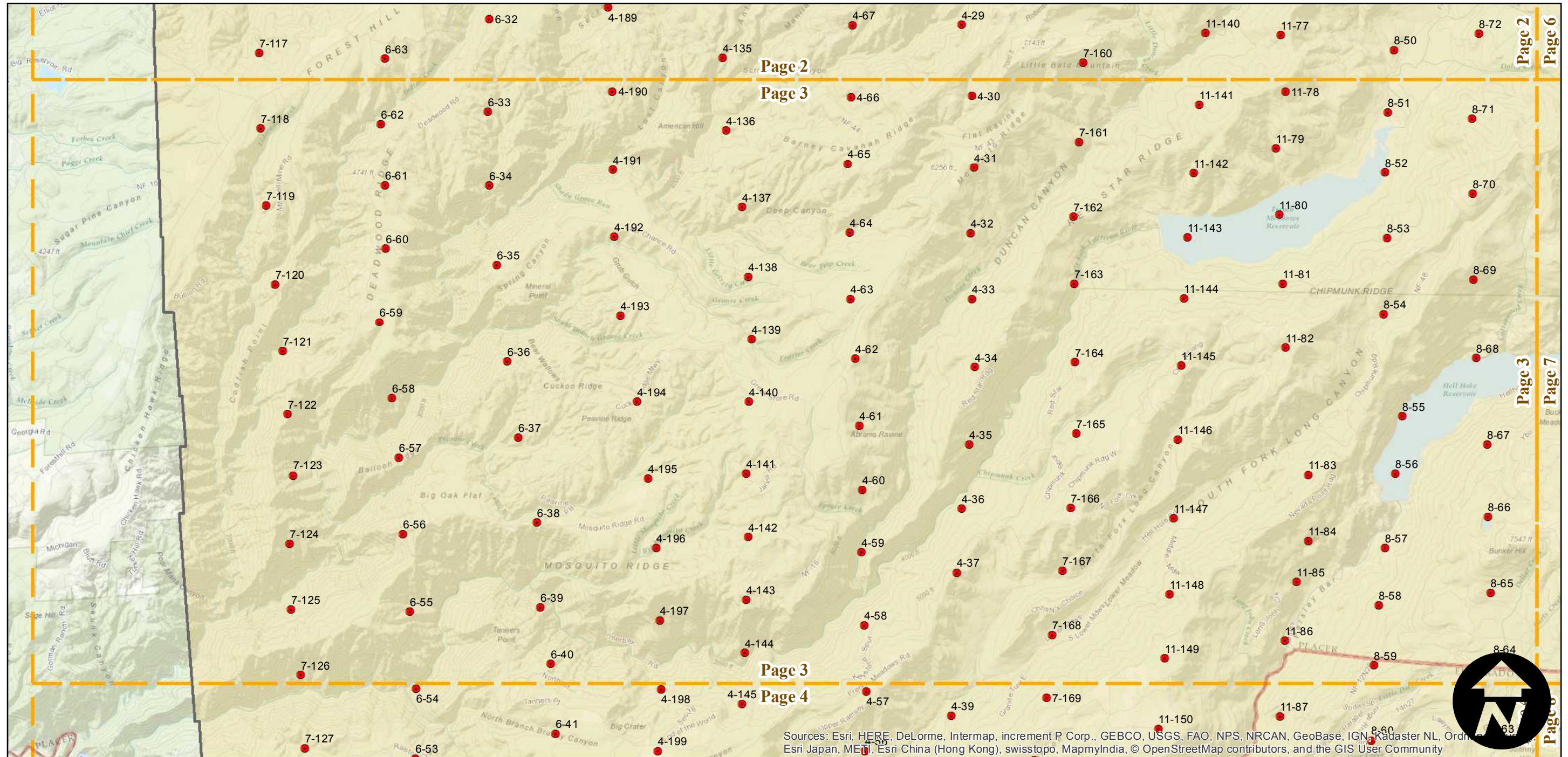
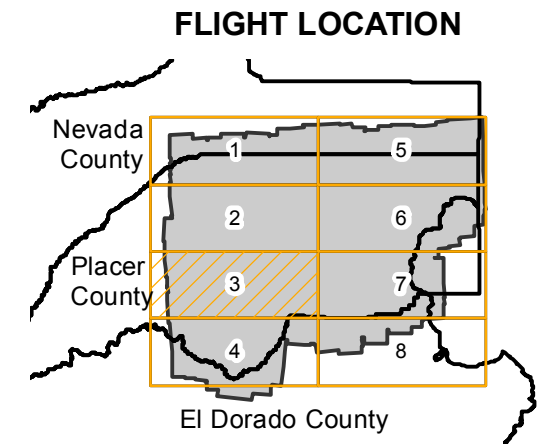
CAS-PLA (1:15K)

Counties: Placer, Nevada, El Dorado
 Flight date(s): 07-28-1962 to 11-29-1962
 Scale: 1:15,840
 Overlap: 60%

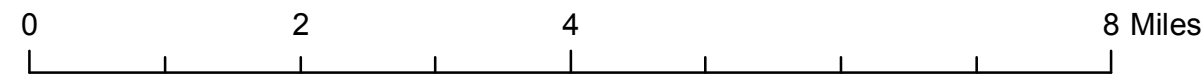
Complete Metadata:
<http://www.library.ucsb.edu/map-imagery-lab/aerial-photography-information>

Note: Western 1/2 of county at 1:20,000. Eastern 1/2 of county at 1:15,840.

- MIL owns frame
- MIL does not own frame



Sources: Esri, HERE, DeLorme, Intermap, increment P Corp., GEBCO, USGS, FAO, NPS, NRCAN, GeoBase, IGN, Kadaster NL, Ordnance Survey, Esri Japan, METI, Esri China (Hong Kong), swisstopo, MapmyIndia, © OpenStreetMap contributors, and the GIS User Community



Index to Aerial Photography
 Page 3 of 8

Scale of this index: 1:90,000

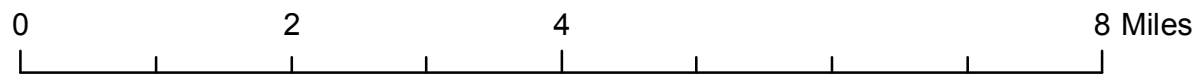
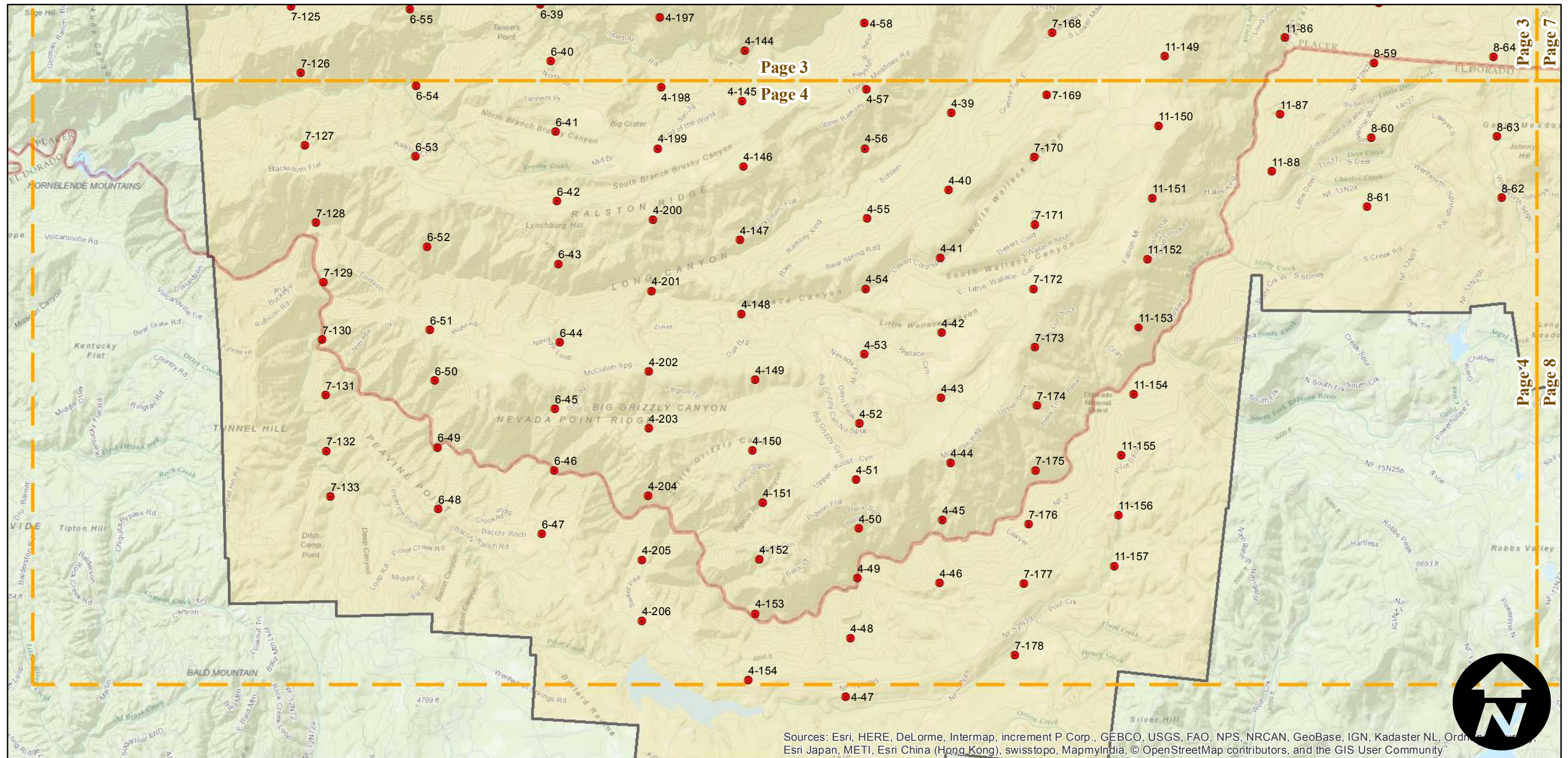
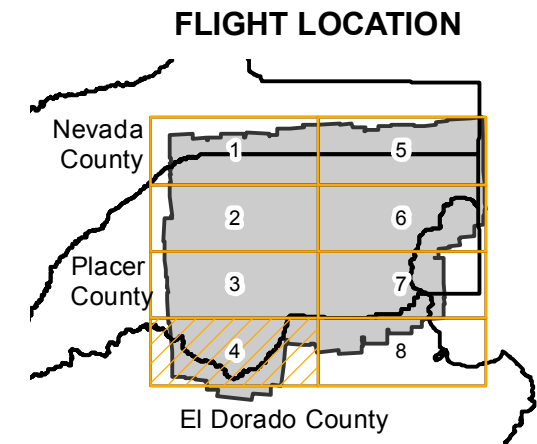
CAS-PLA (1:15K)

Counties: Placer, Nevada, El Dorado
 Flight date(s): 07-28-1962 to 11-29-1962
 Scale: 1:15,840
 Overlap: 60%

Complete Metadata:
<http://www.library.ucsb.edu/map-imagery-lab/aerial-photography-information>

Note: Western 1/2 of county at 1:20,000. Eastern 1/2 of county at 1:15,840.

- MIL owns frame
- MIL does not own frame



Index to Aerial Photography
 Page 4 of 8

Scale of this index: 1:90,000

Sources: Esri, HERE, DeLorme, Intermap, increment P Corp., GEBCO, USGS, FAO, NPS, NRCAN, GeoBase, IGN, Kadaster NL, Ordnance Survey, Esri Japan, METI, Esri China (Hong Kong), swisstopo, MapmyIndia, © OpenStreetMap contributors, and the GIS User Community

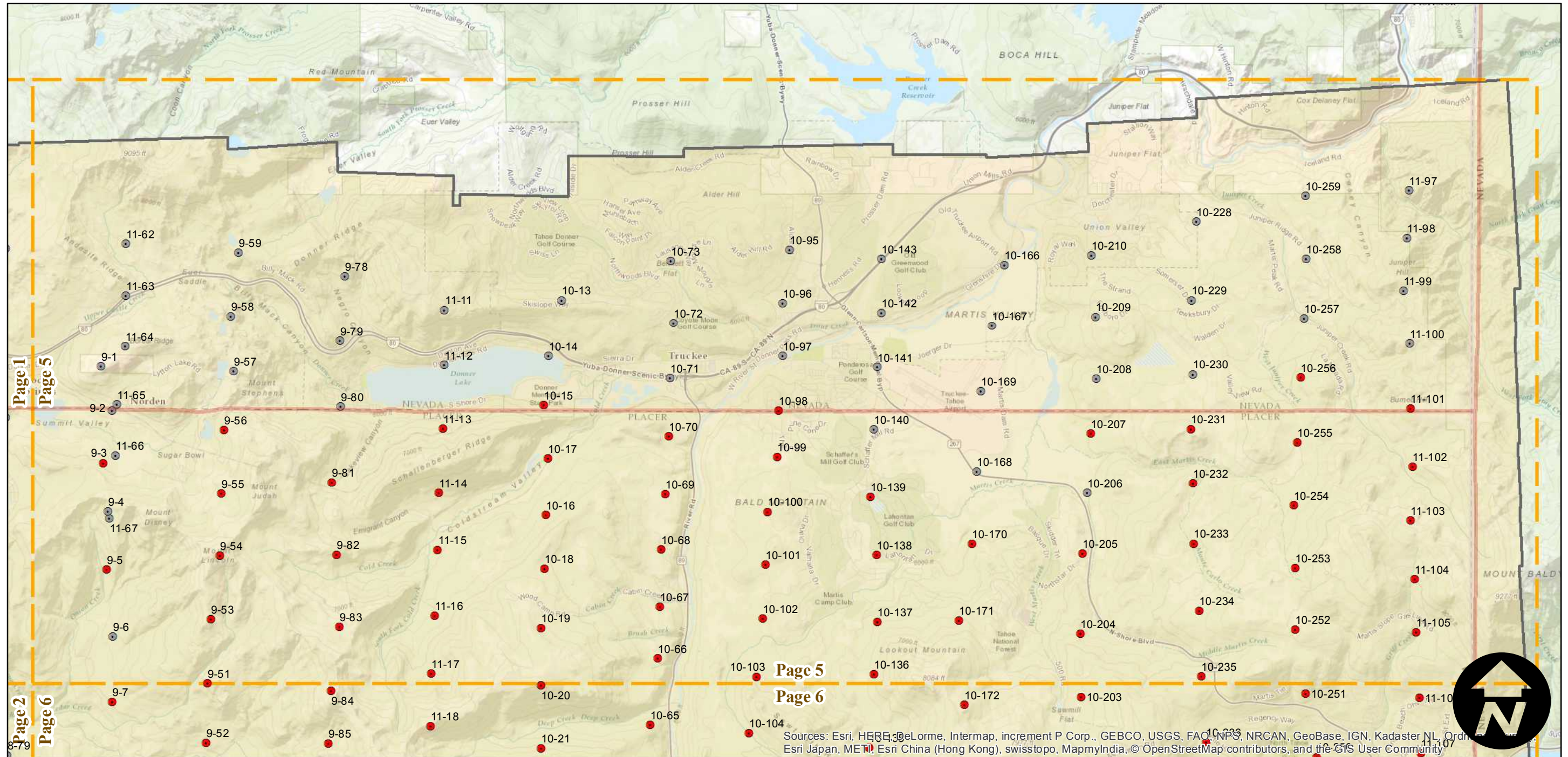
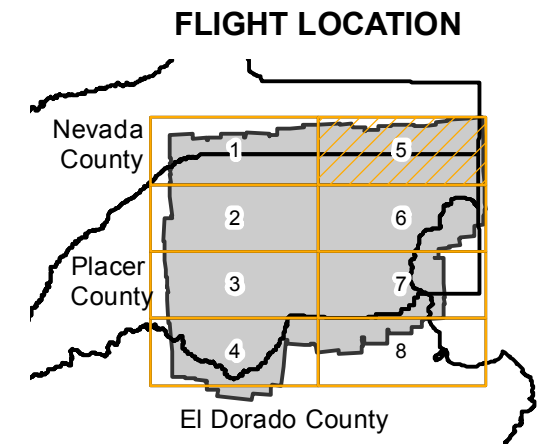
CAS-PLA (1:15K)

Counties: Placer, Nevada, El Dorado
 Flight date(s): 07-28-1962 to 11-29-1962
 Scale: 1:15,840
 Overlap: 60%

Complete Metadata:
<http://www.library.ucsb.edu/map-imagery-lab/aerial-photography-information>

Note: Western 1/2 of county at 1:20,000. Eastern 1/2 of county at 1:15,840.

- MIL owns frame
- MIL does not own frame



0 2 4 8 Miles

Index to Aerial Photography
 Page 5 of 8

Scale of this index: 1:90,000

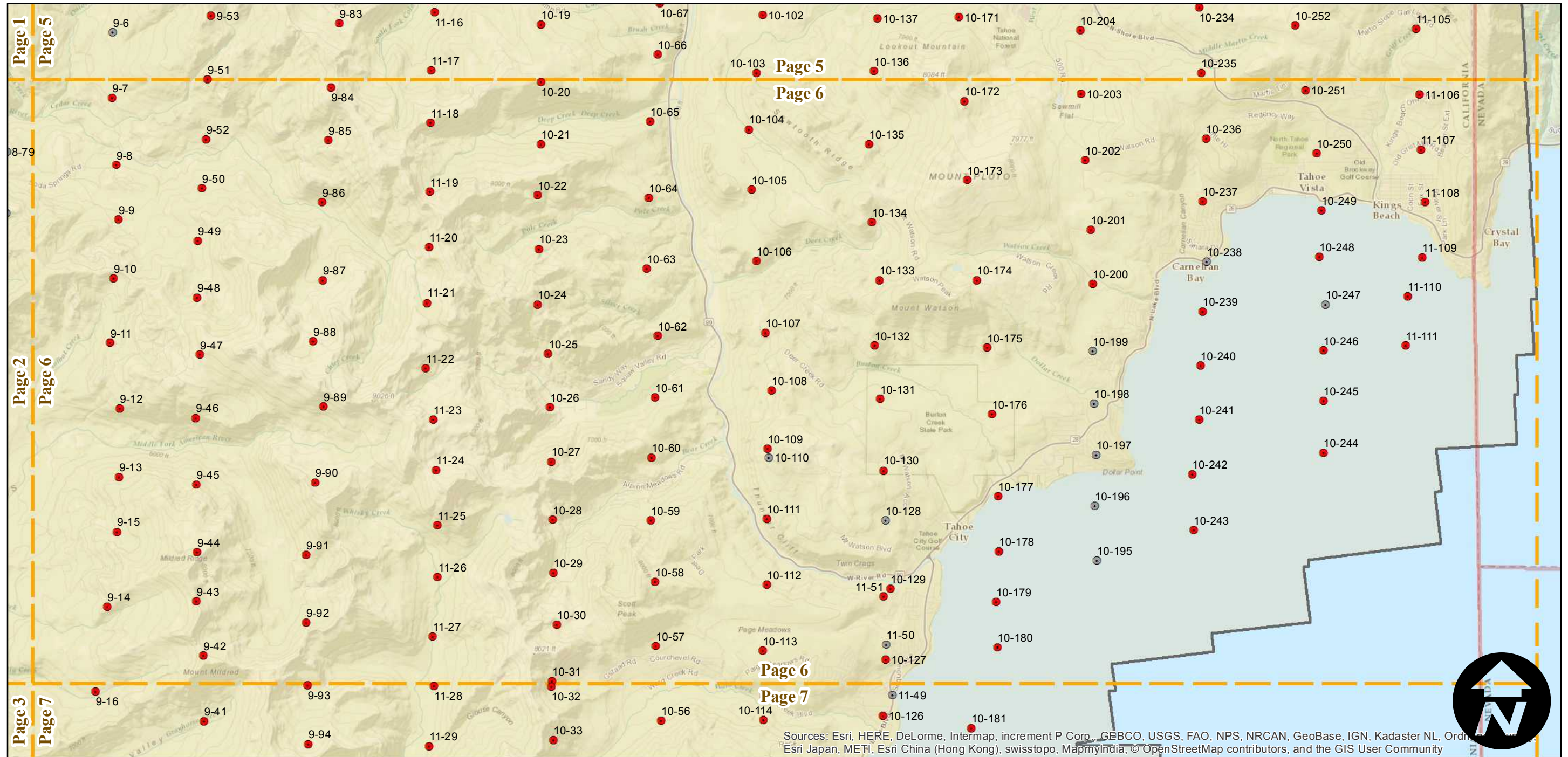
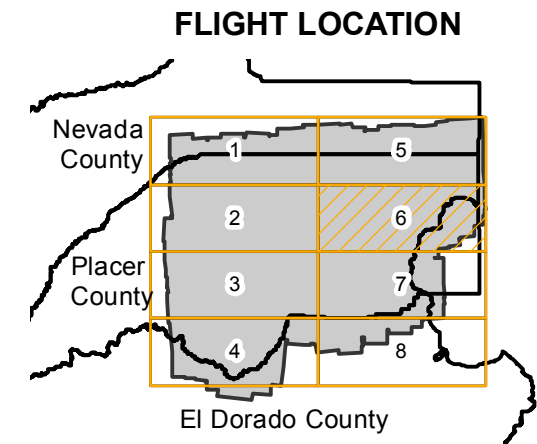
CAS-PLA (1:15K)

Counties: Placer, Nevada, El Dorado
 Flight date(s): 07-28-1962 to 11-29-1962
 Scale: 1:15,840
 Overlap: 60%

Complete Metadata:
<http://www.library.ucsb.edu/map-imagery-lab/aerial-photography-information>

Note: Western 1/2 of county at 1:20,000. Eastern 1/2 of county at 1:15,840.

- MIL owns frame
- MIL does not own frame



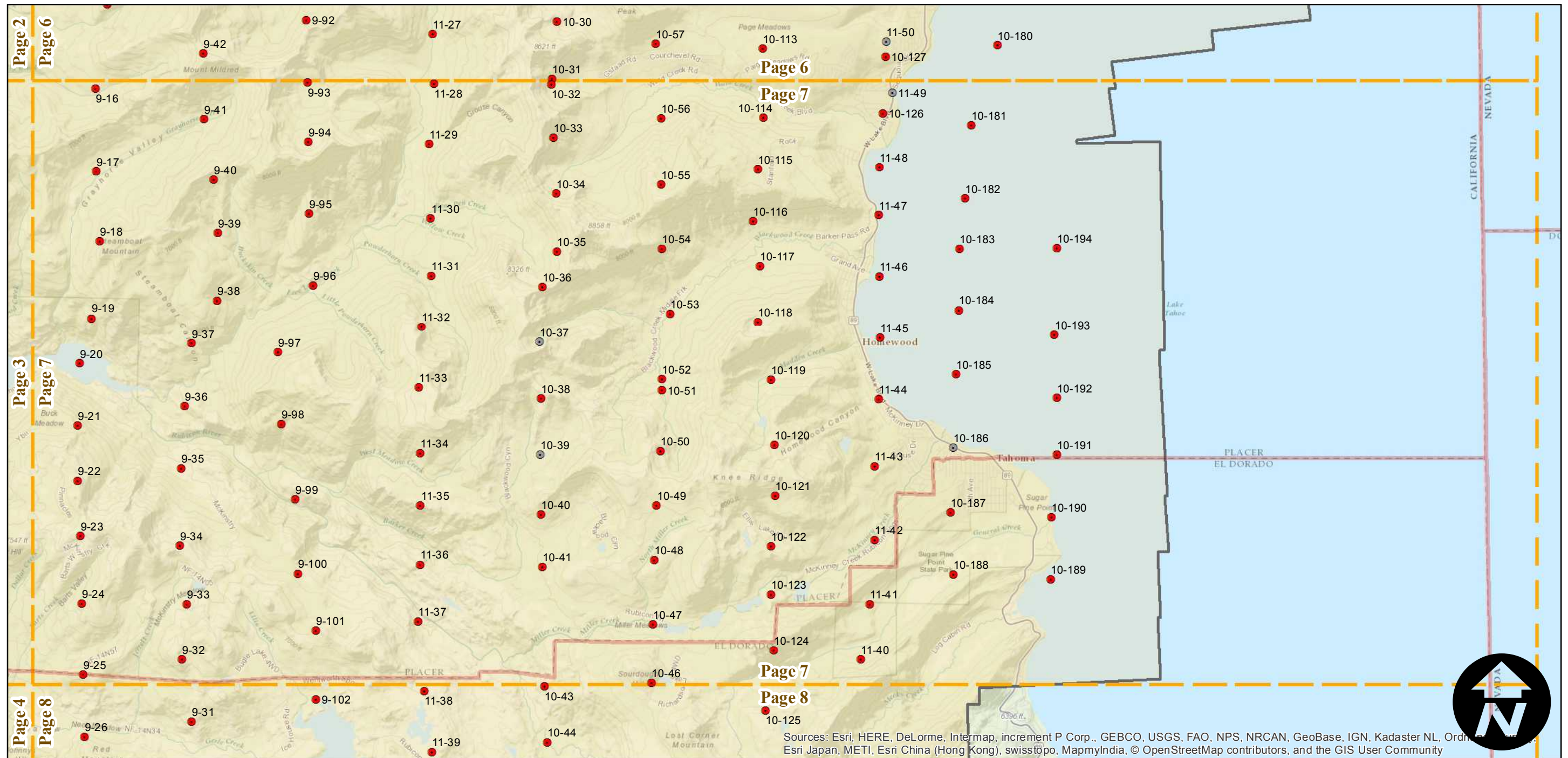
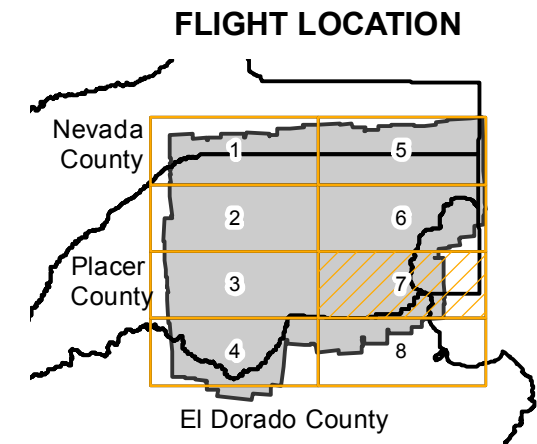
CAS-PLA (1:15K)

Counties: Placer, Nevada, El Dorado
 Flight date(s): 07-28-1962 to 11-29-1962
 Scale: 1:15,840
 Overlap: 60%

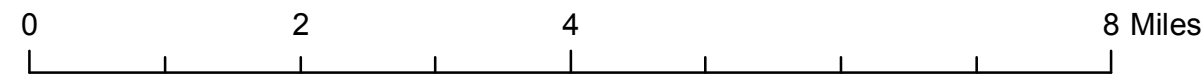
Complete Metadata:
<http://www.library.ucsb.edu/map-imagery-lab/aerial-photography-information>

Note: Western 1/2 of county at 1:20,000. Eastern 1/2 of county at 1:15,840.

- MIL owns frame
- MIL does not own frame



Sources: Esri, HERE, DeLorme, Intermap, increment P Corp., GEBCO, USGS, FAO, NPS, NRCAN, GeoBase, IGN, Kadaster NL, Ordnance Survey, Esri Japan, METI, Esri China (Hong Kong), swissltopo, MapmyIndia, © OpenStreetMap contributors, and the GIS User Community



Index to Aerial Photography
 Page 7 of 8

Scale of this index: 1:90,000

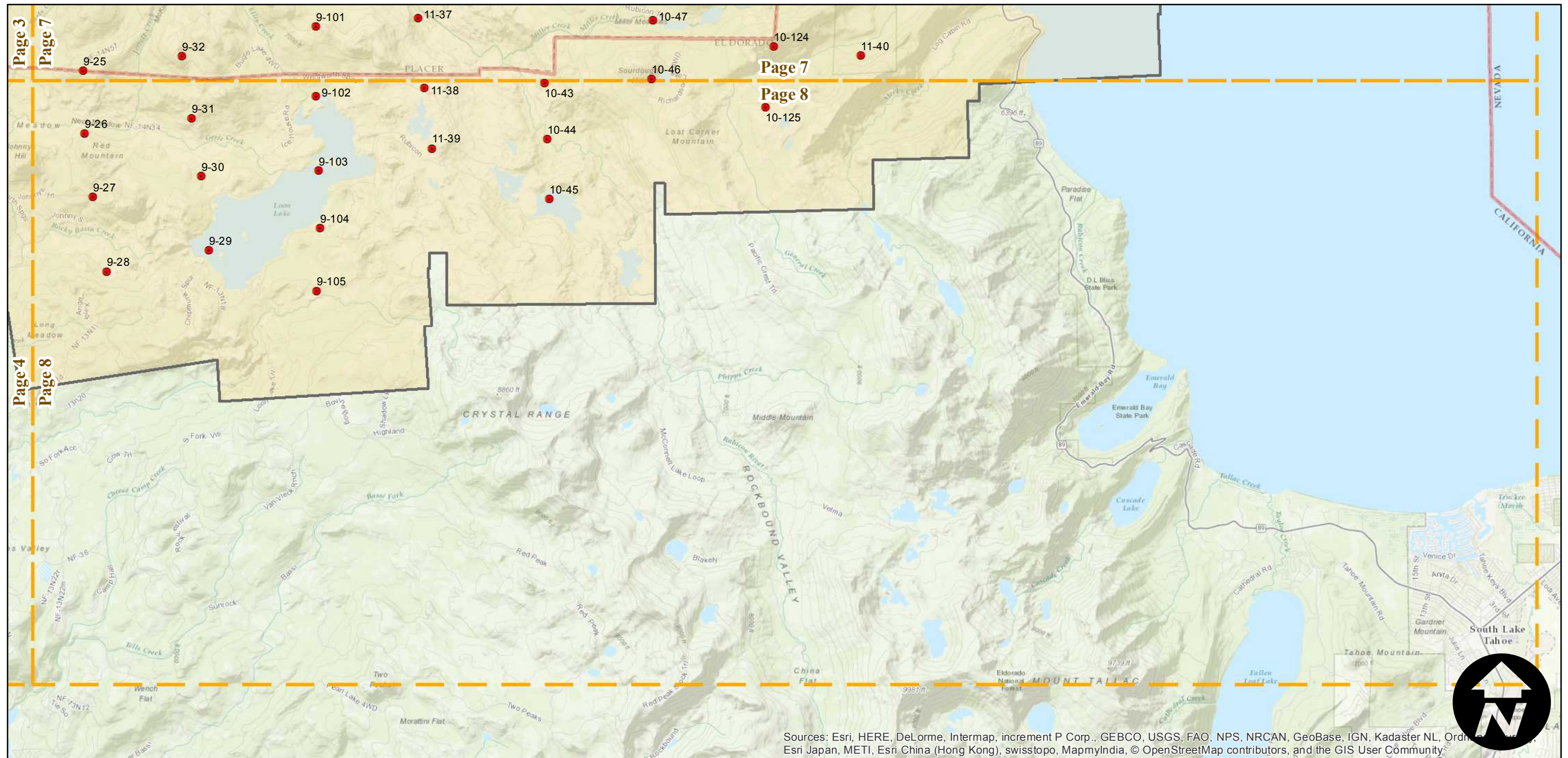
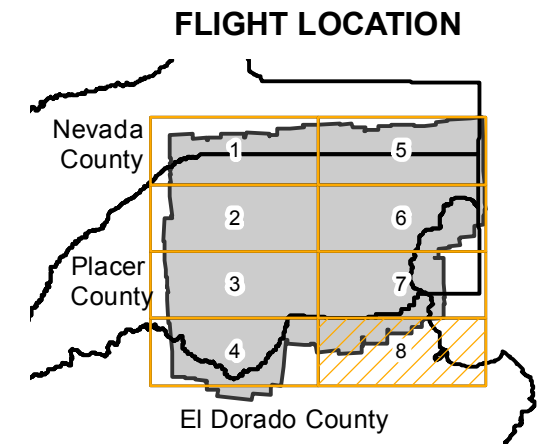
CAS-PLA (1:15K)

Counties: Placer, Nevada, El Dorado
 Flight date(s): 07-28-1962 to 11-29-1962
 Scale: 1:15,840
 Overlap: 60%

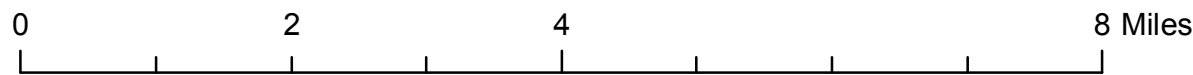
Complete Metadata:
<http://www.library.ucsb.edu/map-imagery-lab/aerial-photography-information>

Note: Western 1/2 of county at 1:20,000. Eastern 1/2 of county at 1:15,840.

- MIL owns frame
- MIL does not own frame



Sources: Esri, HERE, DeLorme, Intermap, increment P Corp., GEBCO, USGS, FAO, NPS, NRCAN, GeoBase, IGN, Kadaster NL, Ordnance Survey, Esri Japan, METI, Esri China (Hong Kong), swisstopo, MapmyIndia, © OpenStreetMap contributors, and the GIS User Community



Index to Aerial Photography
 Page 8 of 8

Scale of this index: 1:90,000

