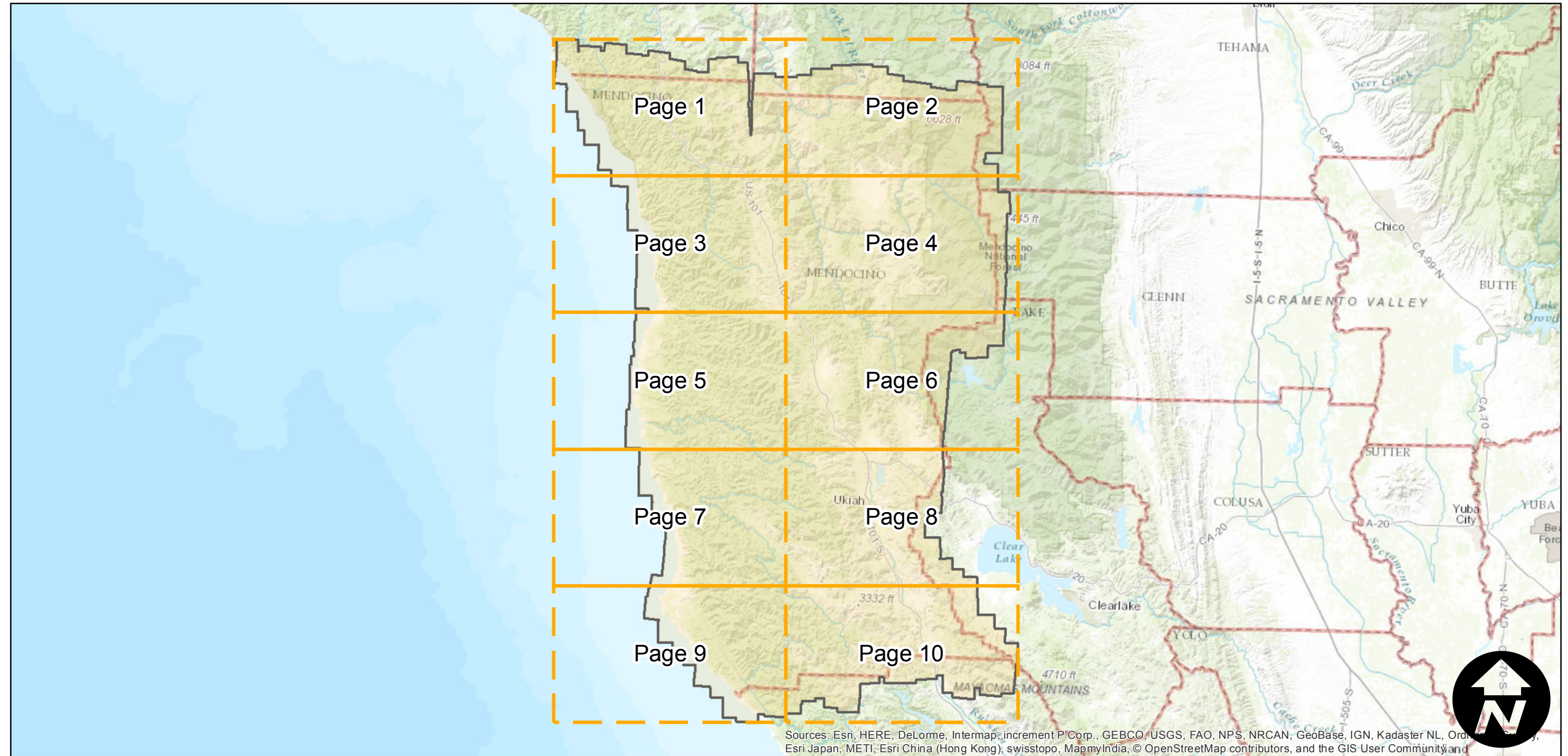
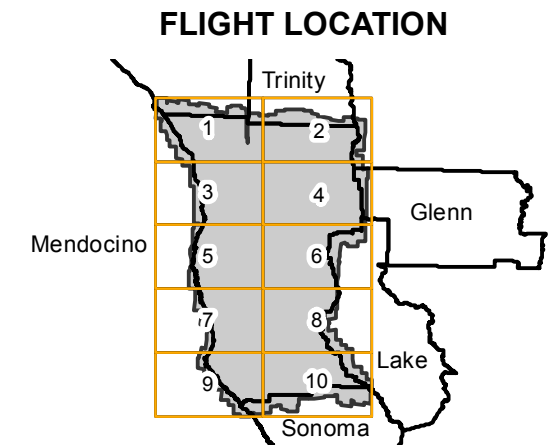


CAS-MEN

Counties: Mendocino, Trinity, Lake, Sonoma
Flight date(s): 06-30-1963 to 07-09-1964
Scale: 1:20,000
Overlap: 60%

Note: Mendocino County. Not all frames are held by the UCSB Library. Coverage extends into surrounding counties.



0 15 30 60 Miles

Index to Aerial Photography
Page Key

Scale of this index: 1:915,000

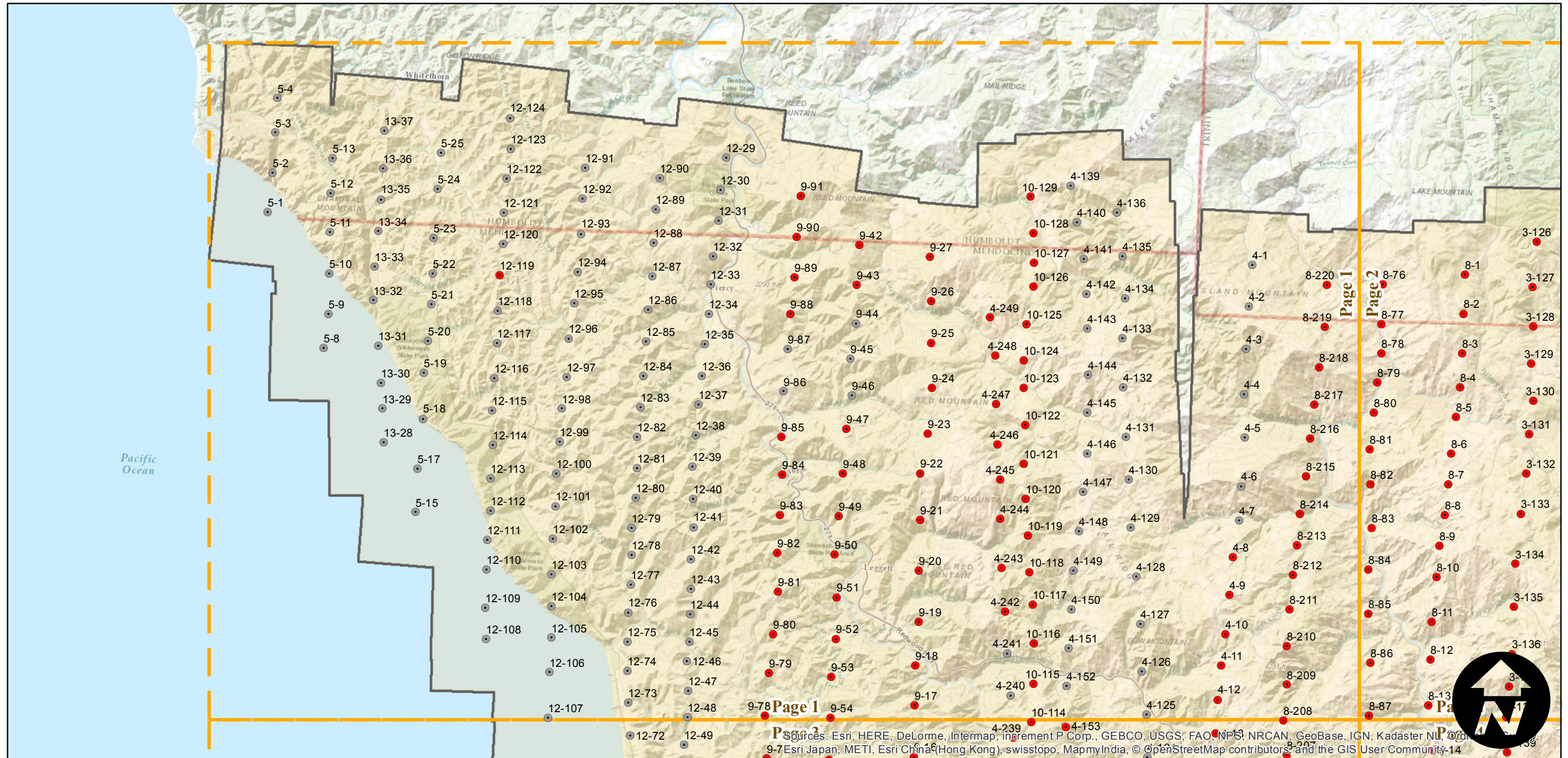
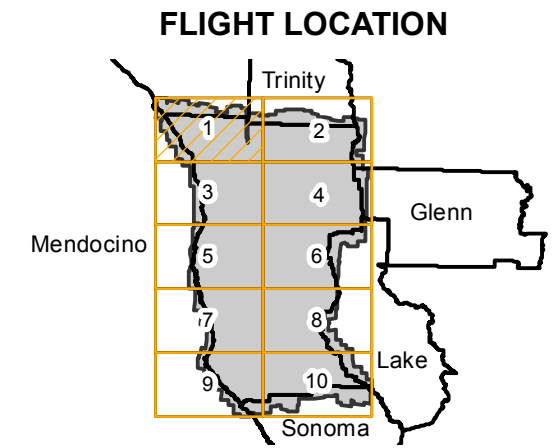
CAS-MEN

Counties: Mendocino, Trinity, Lake, Sonoma
 Flight date(s): 06-30-1963 to 07-09-1964
 Scale: 1:20,000
 Overlap: 60%

Complete Metadata:
<http://www.library.ucsb.edu/map-imagery-lab/aerial-photography-information>

Note: Mendocino County. Not all frames are held by the UCSB Library. Coverage extends into surrounding counties.

- MIL owns frame
- MIL does not own frame



Sources: Esri, HERE, DeLorme, Intermap, increment P Corp., GEBCO, USGS, FAO, NPS, NRCAN, GeoBase, IGN, Kadaster NL, Ordnance Survey, Esri Japan, METI, Esri China (Hong Kong), swisstopo, MapmyIndia, © OpenStreetMap contributors, and the GIS User Community-14

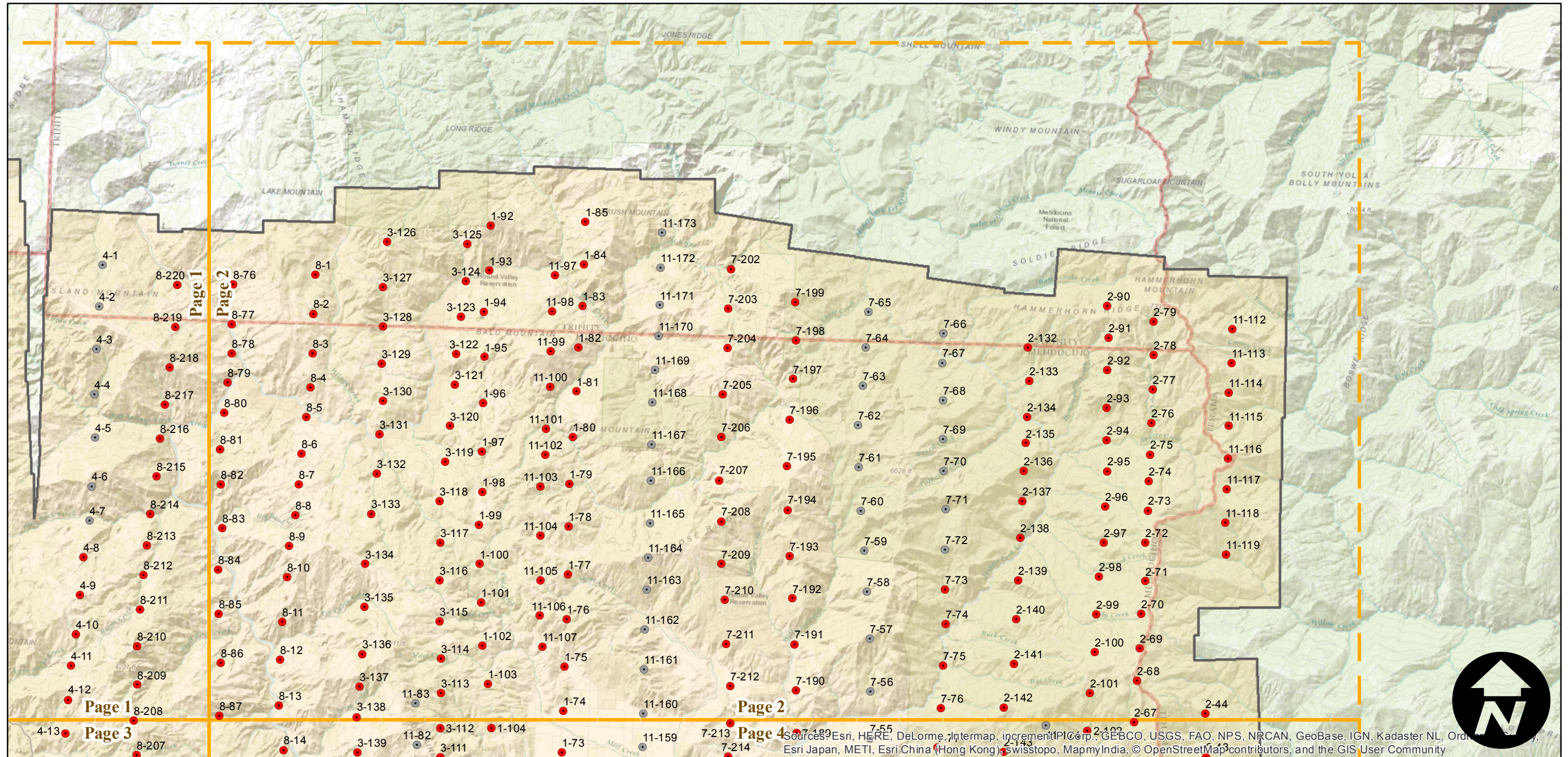
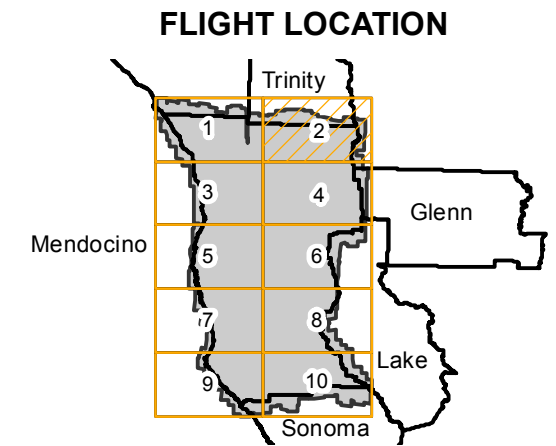
CAS-MEN

Counties: Mendocino, Trinity, Lake, Sonoma
 Flight date(s): 06-30-1963 to 07-09-1964
 Scale: 1:20,000
 Overlap: 60%

Complete Metadata:
<http://www.library.ucsb.edu/map-imagery-lab/aerial-photography-information>

Note: Mendocino County. Not all frames are held by the UCSB Library. Coverage extends into surrounding counties.

- MIL owns frame
- MIL does not own frame



0 3 6 12 Miles

Index to Aerial Photography
 Page 2 of 10

Scale of this index: 1:185,000

Sources: Esri, HERE, DeLorme, Intermap, increment P Corp., GEBCO, USGS, FAO, NPS, NRCAN, GeoBase, IGN, Kadaster NL, Ordnance Survey, Esri Japan, METI, Esri China (Hong Kong), Swisstopo, MapmyIndia, © OpenStreetMap contributors, and the GIS User Community

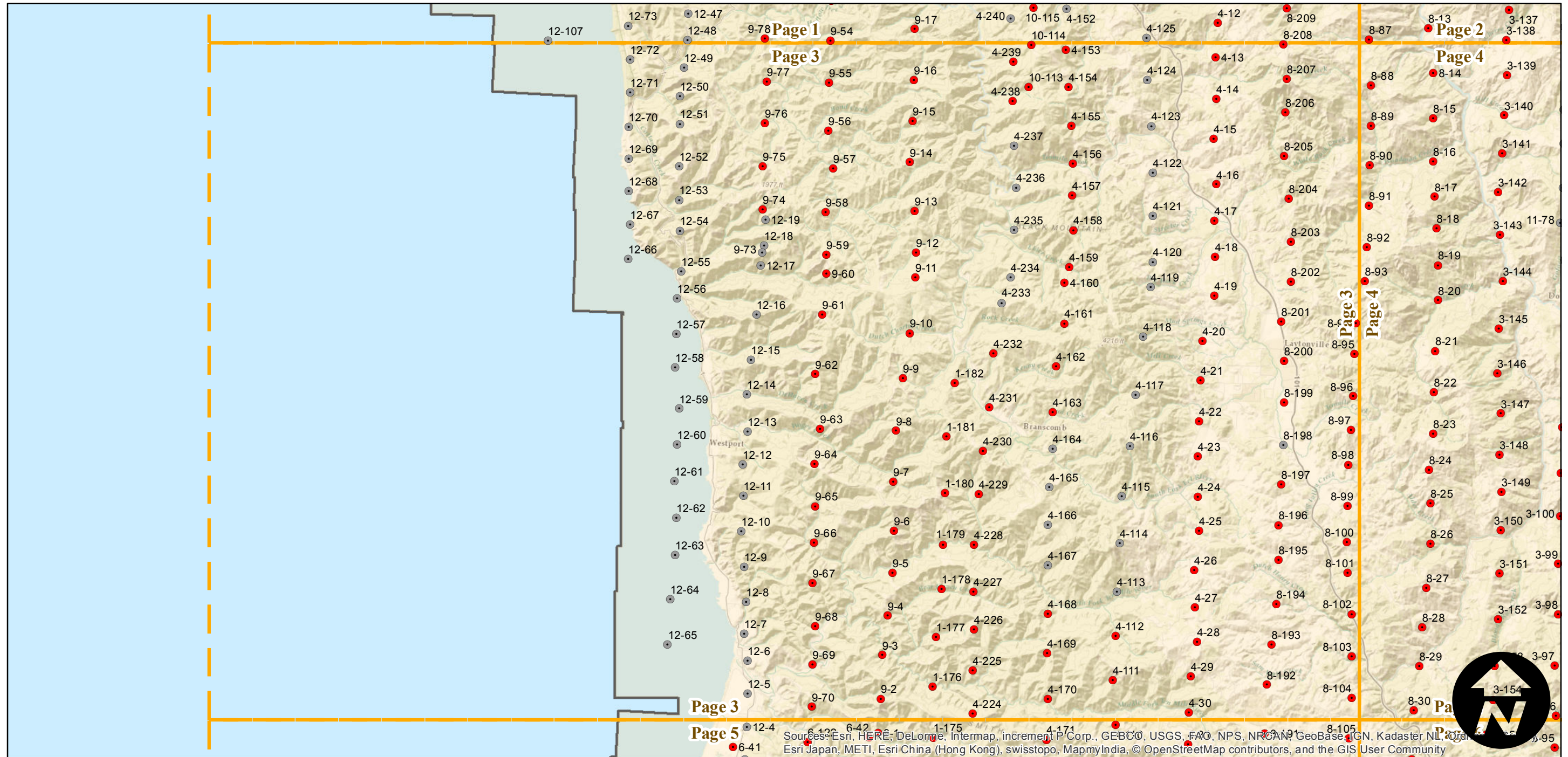
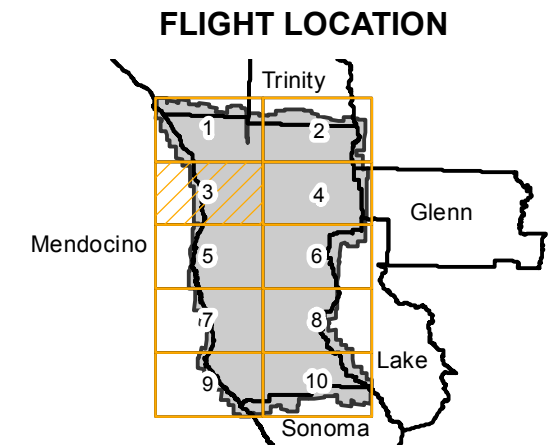
CAS-MEN

Counties: Mendocino, Trinity, Lake, Sonoma
 Flight date(s): 06-30-1963 to 07-09-1964
 Scale: 1:20,000
 Overlap: 60%

Complete Metadata:
<http://www.library.ucsb.edu/map-imagery-lab/aerial-photography-information>

Note: Mendocino County. Not all frames are held by the UCSB Library. Coverage extends into surrounding counties.

- MIL owns frame
- MIL does not own frame



0 3 6 12 Miles

Index to Aerial Photography
 Page 3 of 10

Scale of this index: 1:185,000

Sources: Esri, HERE, DeLorme, Intermap, increment P Corp., GEBCO, USGS, FAO, NPS, NRCAN, GeoBase, IGN, Kadaster NL, Ordnance Survey, Esri Japan, METI, Esri China (Hong Kong), swisstopo, MapmyIndia, © OpenStreetMap contributors, and the GIS User Community

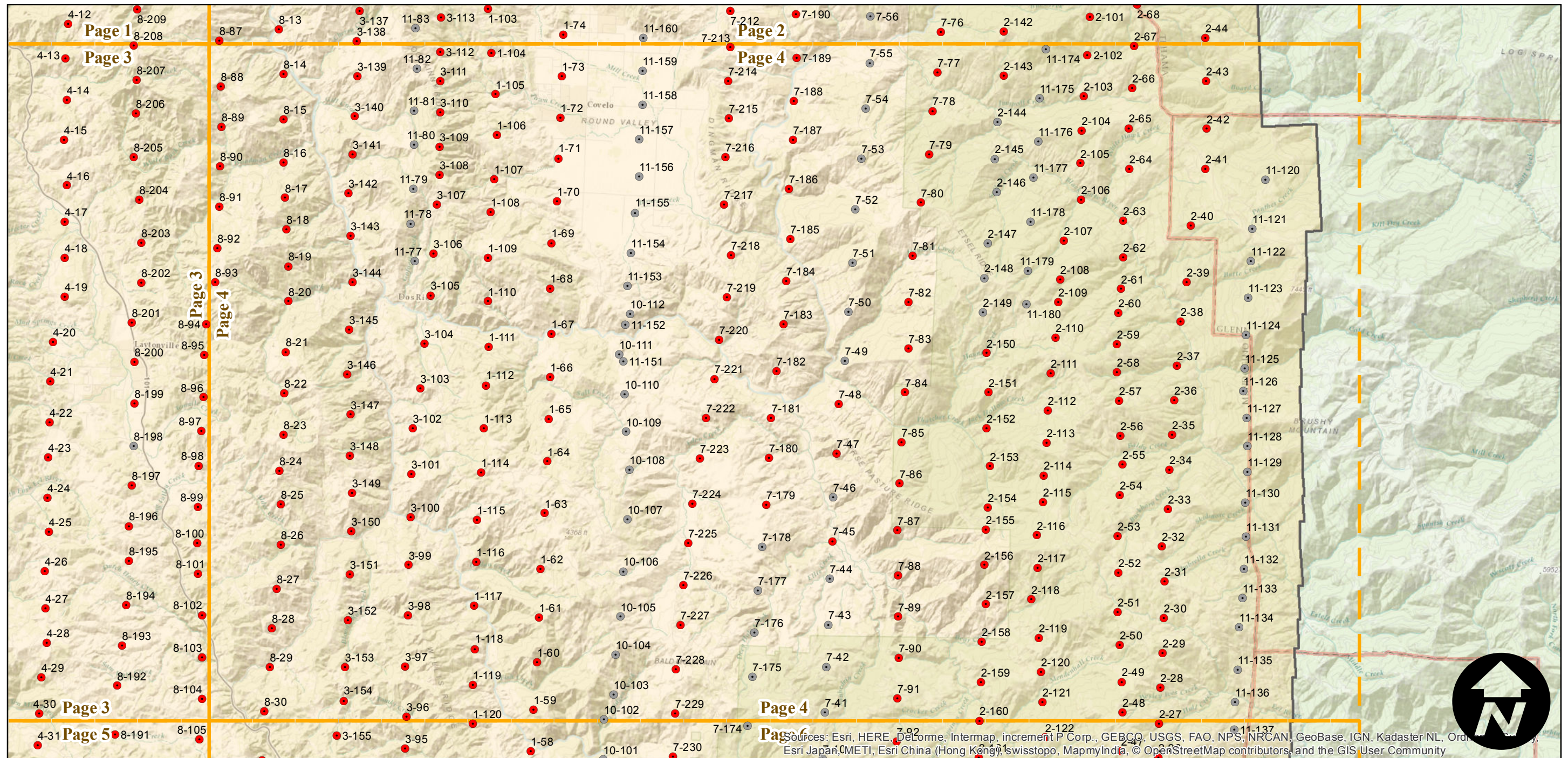
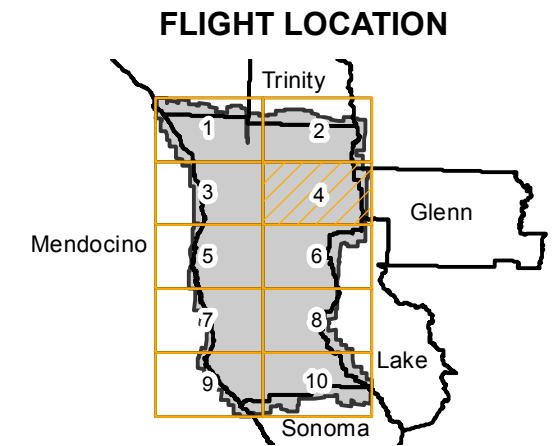
CAS-MEN

Counties: Mendocino, Trinity, Lake, Sonoma
 Flight date(s): 06-30-1963 to 07-09-1964
 Scale: 1:20,000
 Overlap: 60%

Complete Metadata:
<http://www.library.ucsb.edu/map-imagery-lab/aerial-photography-information>

Note: Mendocino County. Not all frames are held by the UCSB Library. Coverage extends into surrounding counties.

- MIL owns frame
- MIL does not own frame



Sources: Esri, HERE, DeLorme, Intermap, increment P Corp., GEBCO, USGS, FAO, NPS, NRCAN, GeoBase, IGN, Kadaster NL, Ordnance Survey, Esri Japan, METI, Esri China (Hong Kong), Swisstopo, MapmyIndia, © OpenStreetMap contributors, and the GIS User Community

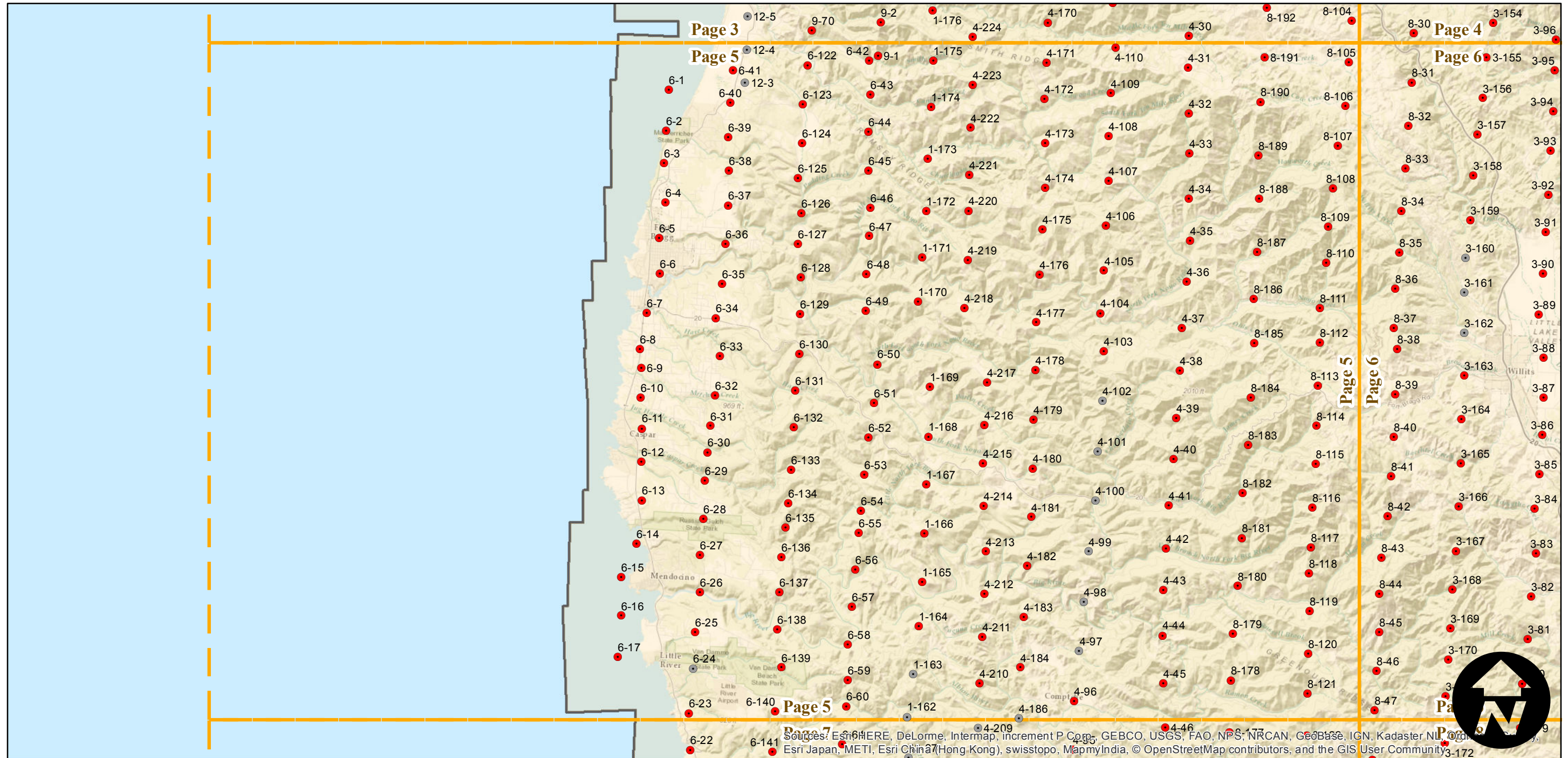
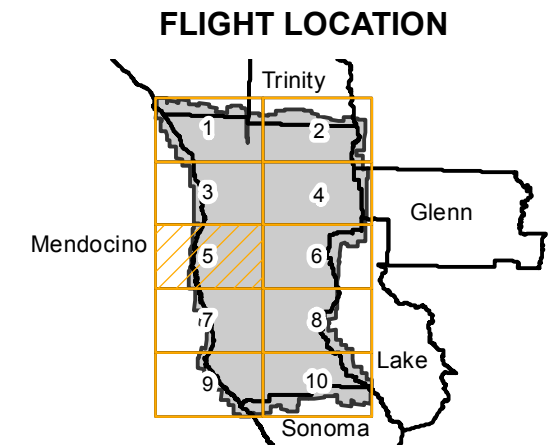
CAS-MEN

Counties: Mendocino, Trinity, Lake, Sonoma
 Flight date(s): 06-30-1963 to 07-09-1964
 Scale: 1:20,000
 Overlap: 60%

Complete Metadata:
<http://www.library.ucsb.edu/map-imagery-lab/aerial-photography-information>

Note: Mendocino County. Not all frames are held by the UCSB Library. Coverage extends into surrounding counties.

- MIL owns frame
- MIL does not own frame



Sources: Esri, HERE, DeLorme, Intermap, increment P Corp., GEBCO, USGS, FAO, NPS, NRCAN, Geobase, IGN, Kadaster NL, Ordnance Survey, Esri Japan, METI, Esri China (Hong Kong), swisstopo, MapmyIndia, © OpenStreetMap contributors, and the GIS User Community



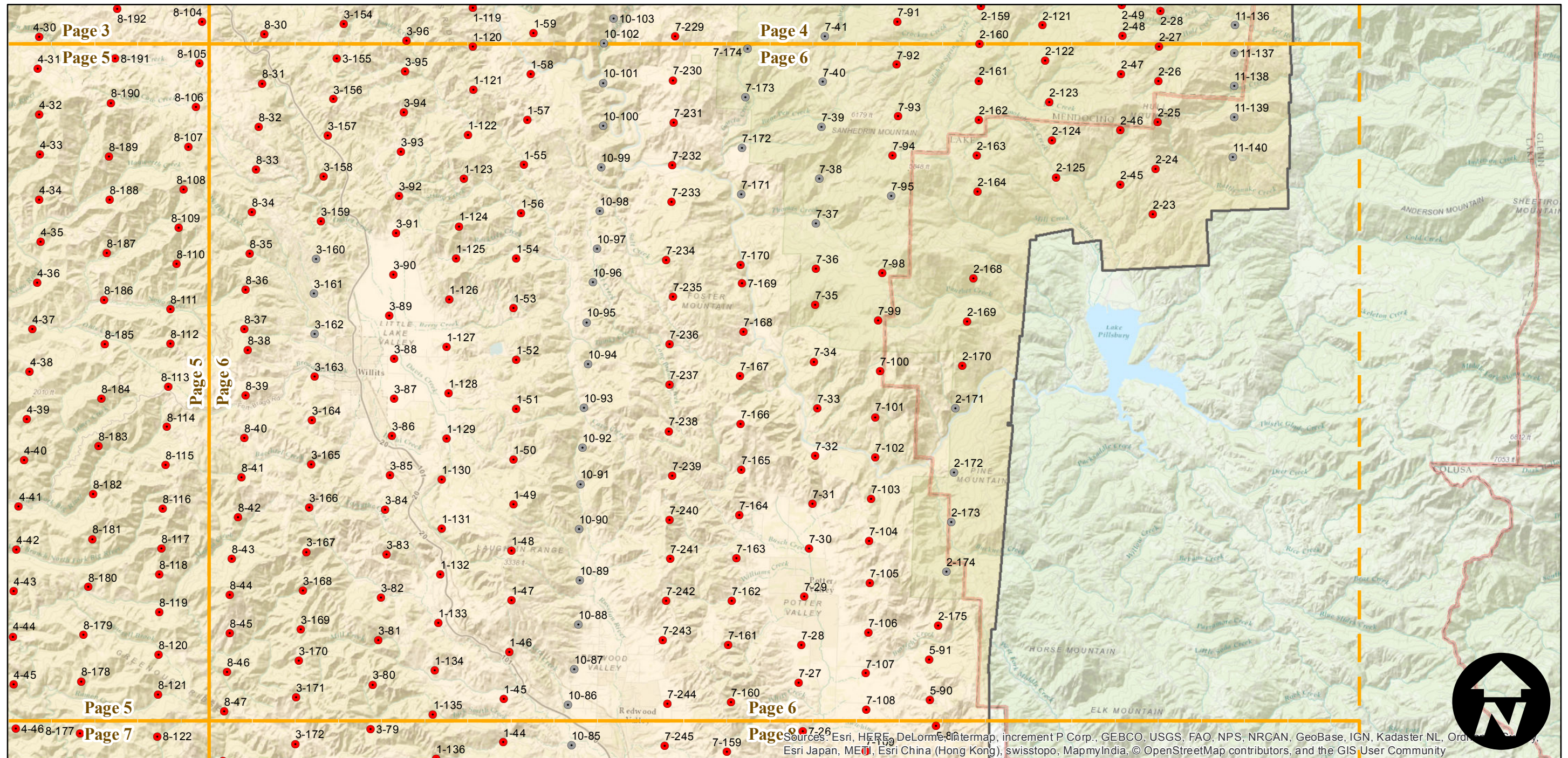
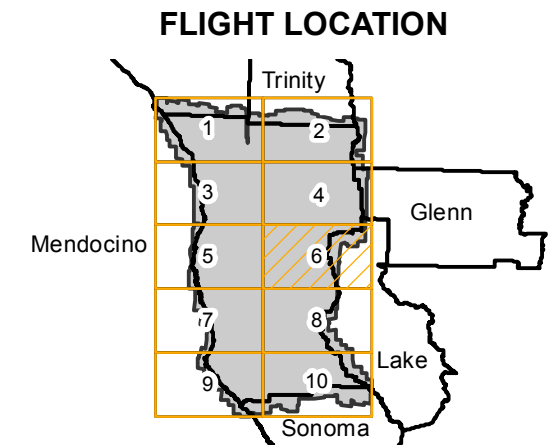
CAS-MEN

Counties: Mendocino, Trinity, Lake, Sonoma
 Flight date(s): 06-30-1963 to 07-09-1964
 Scale: 1:20,000
 Overlap: 60%

Complete Metadata:
<http://www.library.ucsb.edu/map-imagery-lab/aerial-photography-information>

Note: Mendocino County. Not all frames are held by the UCSB Library. Coverage extends into surrounding counties.

- MIL owns frame
- MIL does not own frame



Sources: Esri, HERE, DeLorme, Mapbox, Microsoft, Swire, Unacademy, USGS, FAO, NPS, NRCAN, GeoBase, IGN, Kadaster NL, Ordnance Survey, Esri Japan, METI, Esri China (Hong Kong), swisstopo, MapmyIndia, © OpenStreetMap contributors, and the GIS User Community

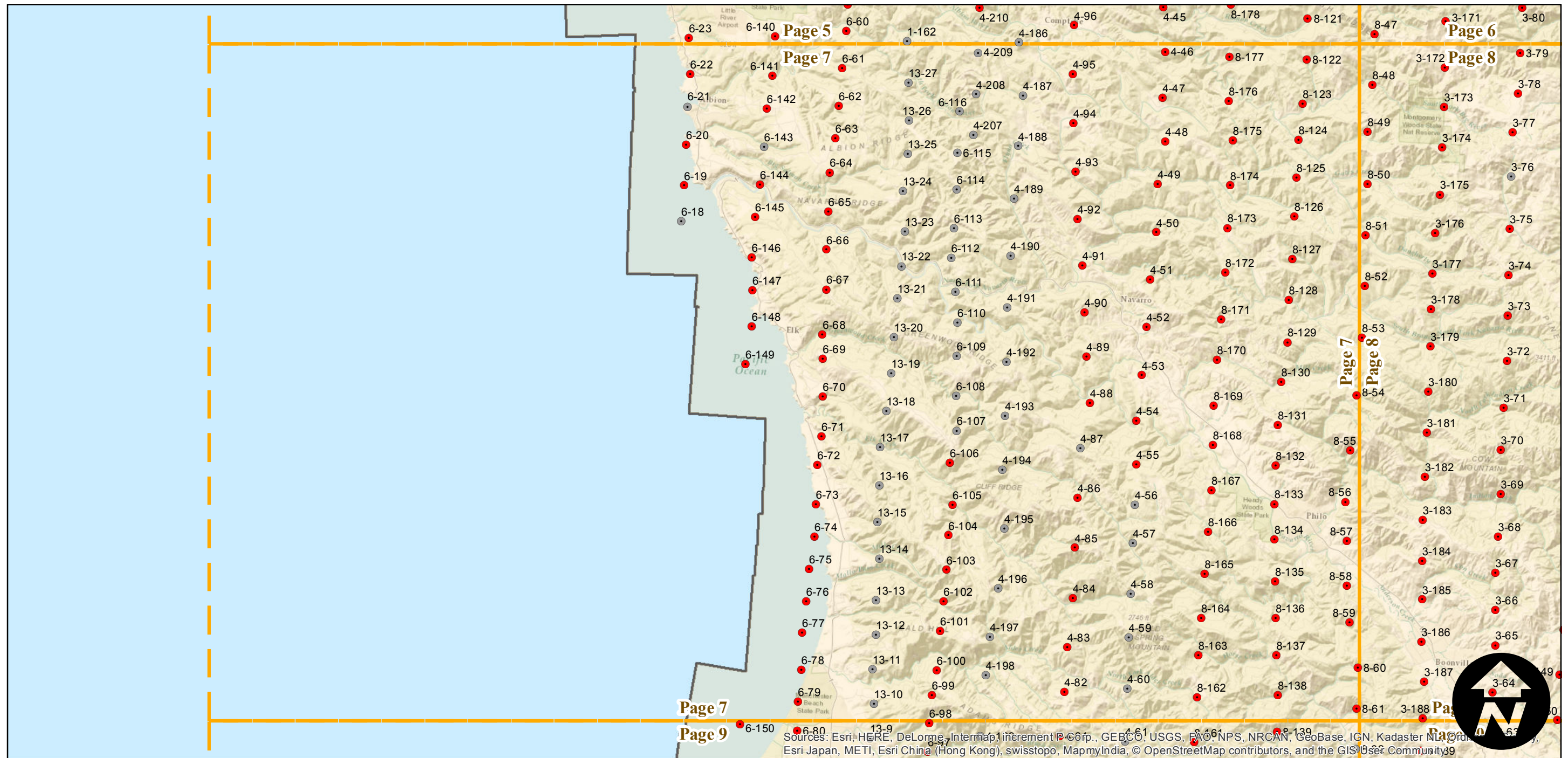
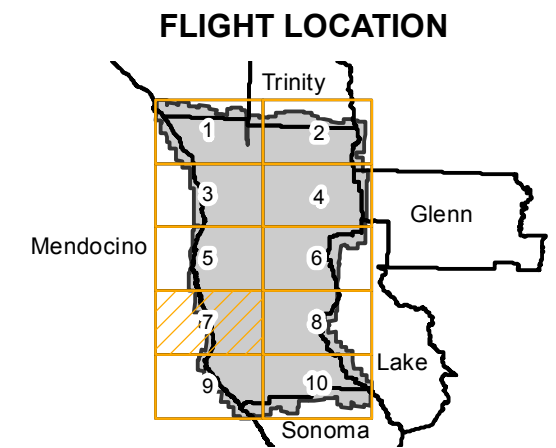
CAS-MEN

Counties: Mendocino, Trinity, Lake, Sonoma
 Flight date(s): 06-30-1963 to 07-09-1964
 Scale: 1:20,000
 Overlap: 60%

Complete Metadata:
<http://www.library.ucsb.edu/map-imagery-lab/aerial-photography-information>

Note: Mendocino County. Not all frames are held by the UCSB Library. Coverage extends into surrounding counties.

- MIL owns frame
- MIL does not own frame



Sources: Esri, HERE, DeLorme, Intermap, increment P Corp., GEBCO, USGS, FAO, NPS, NRCAN, GeoBase, IGN, Kadaster NL, Ordnance Survey, Esri Japan, METI, Esri China (Hong Kong), swisstopo, MapmyIndia, © OpenStreetMap contributors, and the GIS User Community

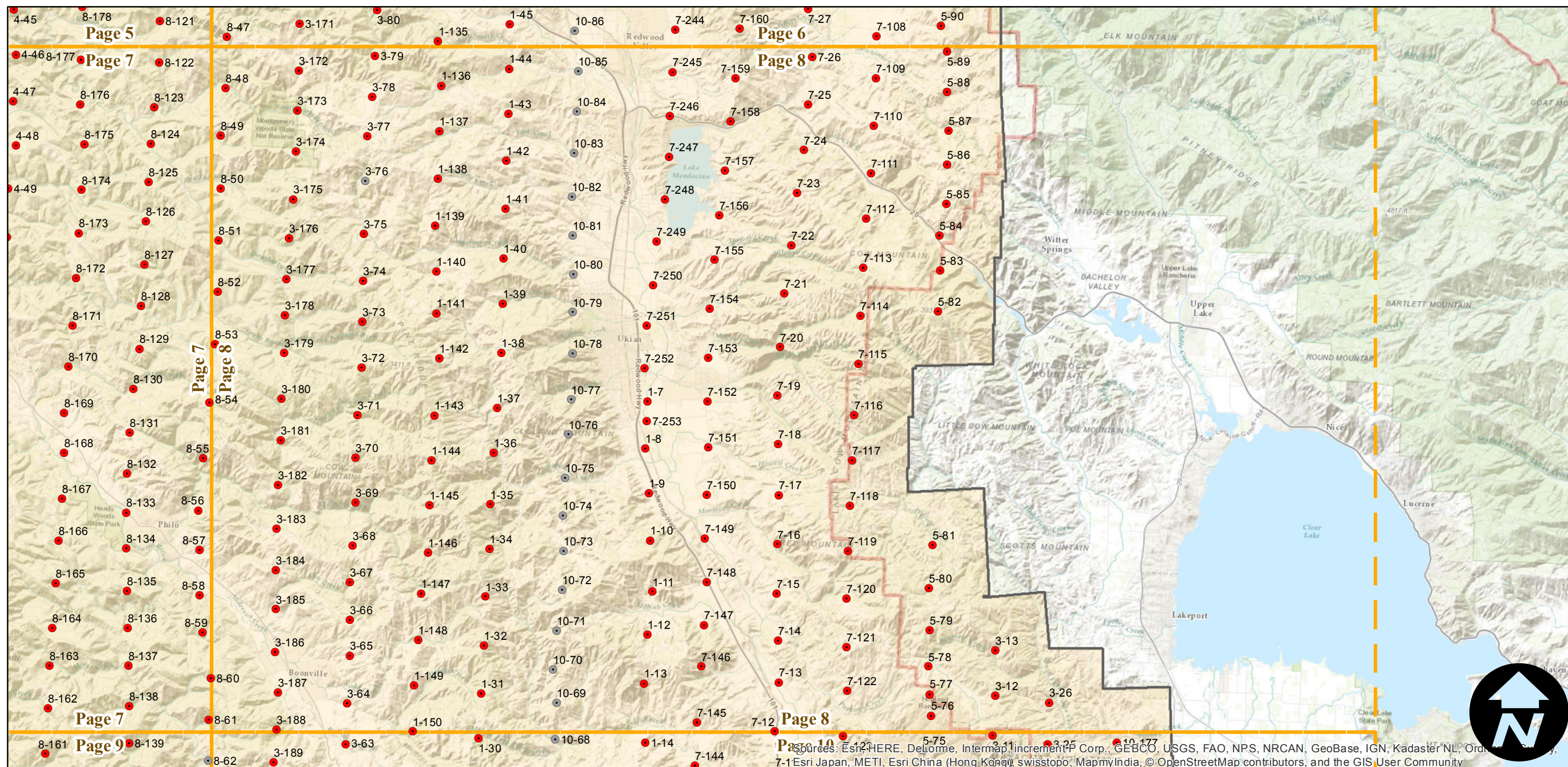
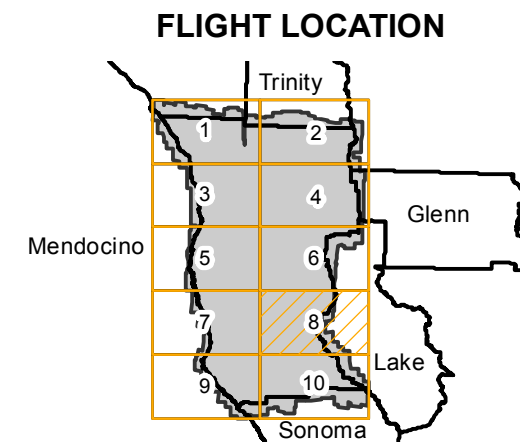
CAS-MEN

Counties: Mendocino, Trinity, Lake, Sonoma
 Flight date(s): 06-30-1963 to 07-09-1964
 Scale: 1:20,000
 Overlap: 60%

Complete Metadata:
<http://www.library.ucsb.edu/map-imagery-lab/aerial-photography-information>

Note: Mendocino County. Not all frames are held by the UCSB Library. Coverage extends into surrounding counties.

- MIL owns frame
- MIL does not own frame



Index to Aerial Photography
 Page 8 of 10

Scale of this index: 1:185,000



Sources: Esri, HERE, DeLorme, Intermap, increment P Corp., GEBCO, USGS, FAO, NPS, NRCAN, GeoBase, IGN, Kadaster NL, Ordnance Survey, Esri Japan, METI, Esri China (Hong Kong), swisstopo, MapmyIndia, © OpenStreetMap contributors, and the GIS User Community

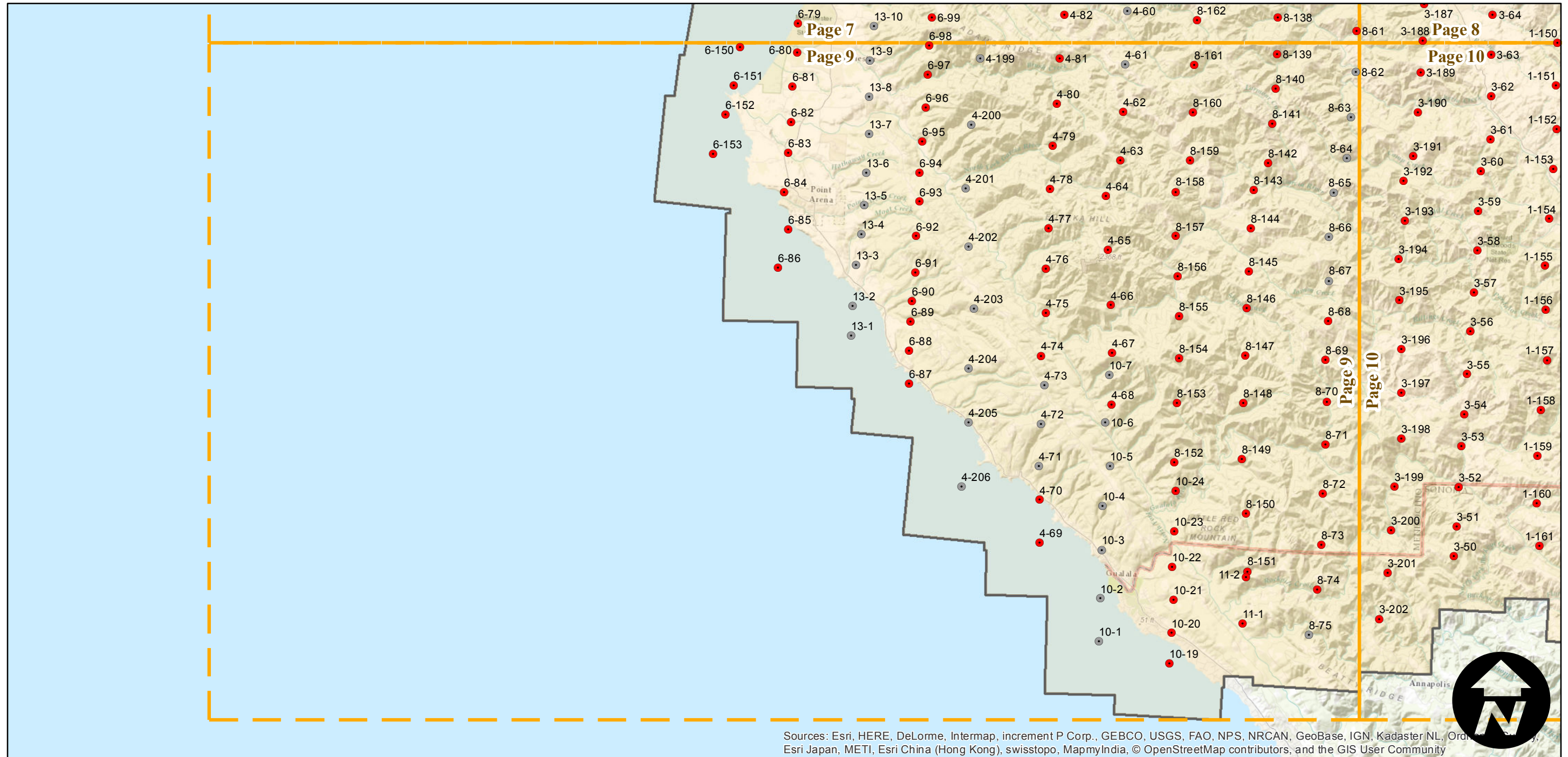
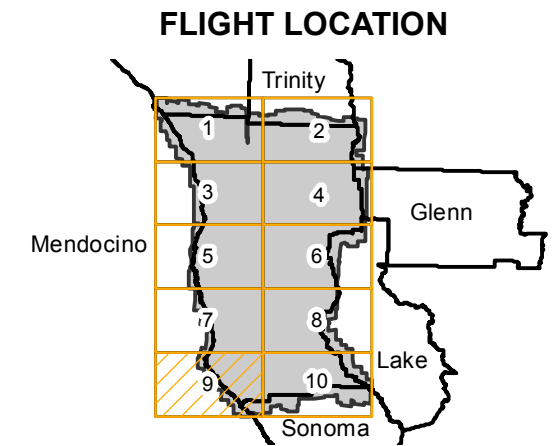
CAS-MEN

Counties: Mendocino, Trinity, Lake, Sonoma
 Flight date(s): 06-30-1963 to 07-09-1964
 Scale: 1:20,000
 Overlap: 60%

Complete Metadata:
<http://www.library.ucsb.edu/map-imagery-lab/aerial-photography-information>

Note: Mendocino County. Not all frames are held by the UCSB Library. Coverage extends into surrounding counties.

- MIL owns frame
- MIL does not own frame



Sources: Esri, HERE, DeLorme, Intermap, increment P Corp., GEBCO, USGS, FAO, NPS, NRCAN, GeoBase, IGN, Kadaster NL, Ordnance Survey, Esri Japan, METI, Esri China (Hong Kong), swisstopo, MapmyIndia, © OpenStreetMap contributors, and the GIS User Community

0 3 6 12 Miles

Index to Aerial Photography
 Page 9 of 10

Scale of this index: 1:185,000

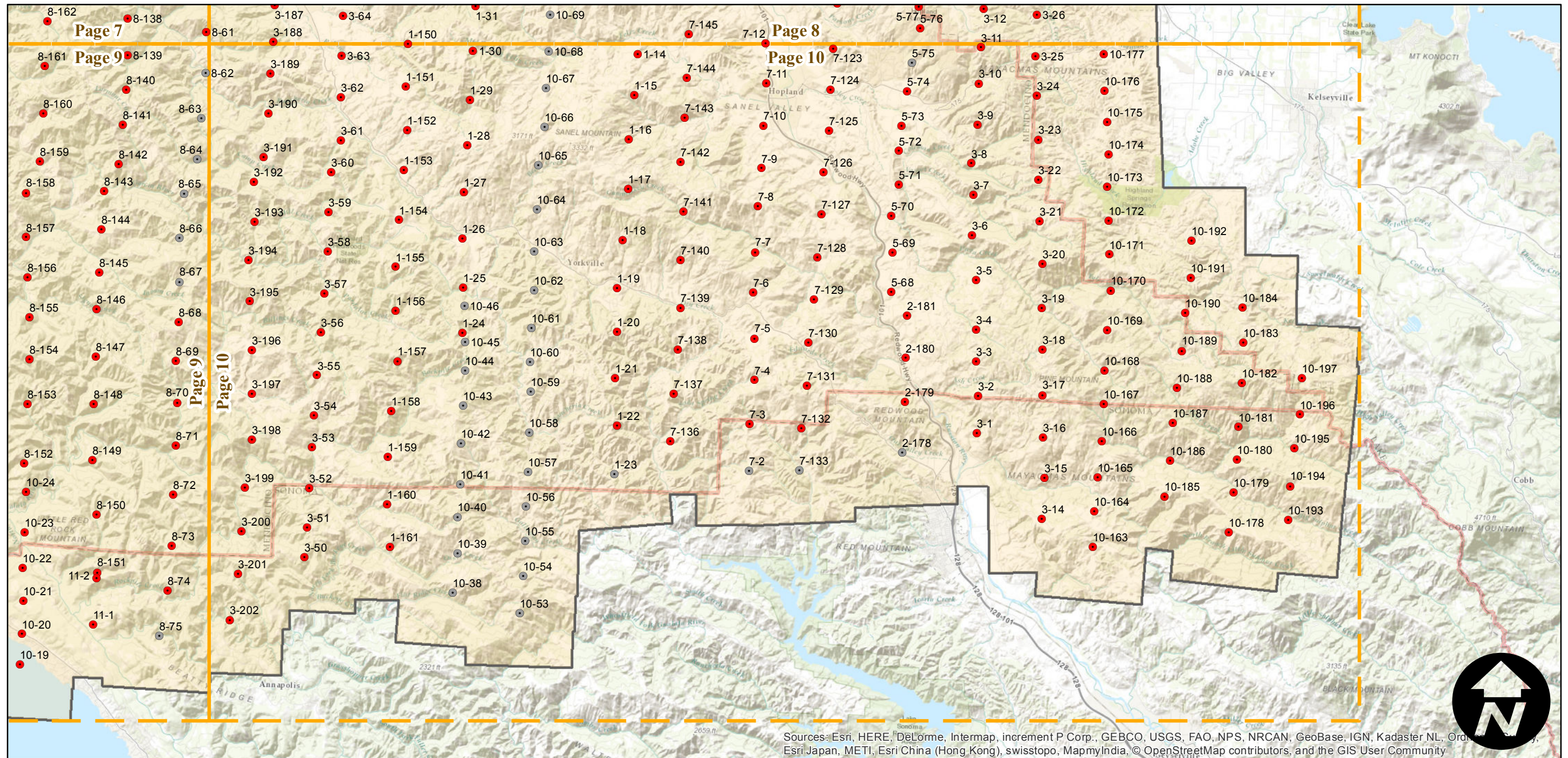
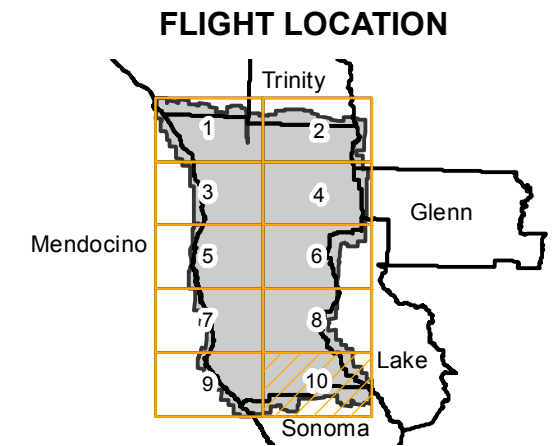
CAS-MEN

Counties: Mendocino, Trinity, Lake, Sonoma
 Flight date(s): 06-30-1963 to 07-09-1964
 Scale: 1:20,000
 Overlap: 60%

Complete Metadata:
<http://www.library.ucsb.edu/map-imagery-lab/aerial-photography-information>

Note: Mendocino County. Not all frames are held by the UCSB Library. Coverage extends into surrounding counties.

- MIL owns frame
- MIL does not own frame



Sources: Esri, HERE, DeLorme, Intermap, increment P Corp., GEBCO, USGS, FAO, NPS, NRCAN, GeoBase, IGN, Kadaster NL, Ordnance Survey, Esri Japan, METI, Esri China (Hong Kong), swisstopo, MapmyIndia, © OpenStreetMap contributors, and the GIS User Community

0 3 6 12 Miles

Index to Aerial Photography
 Page 10 of 10

Scale of this index: 1:185,000

