

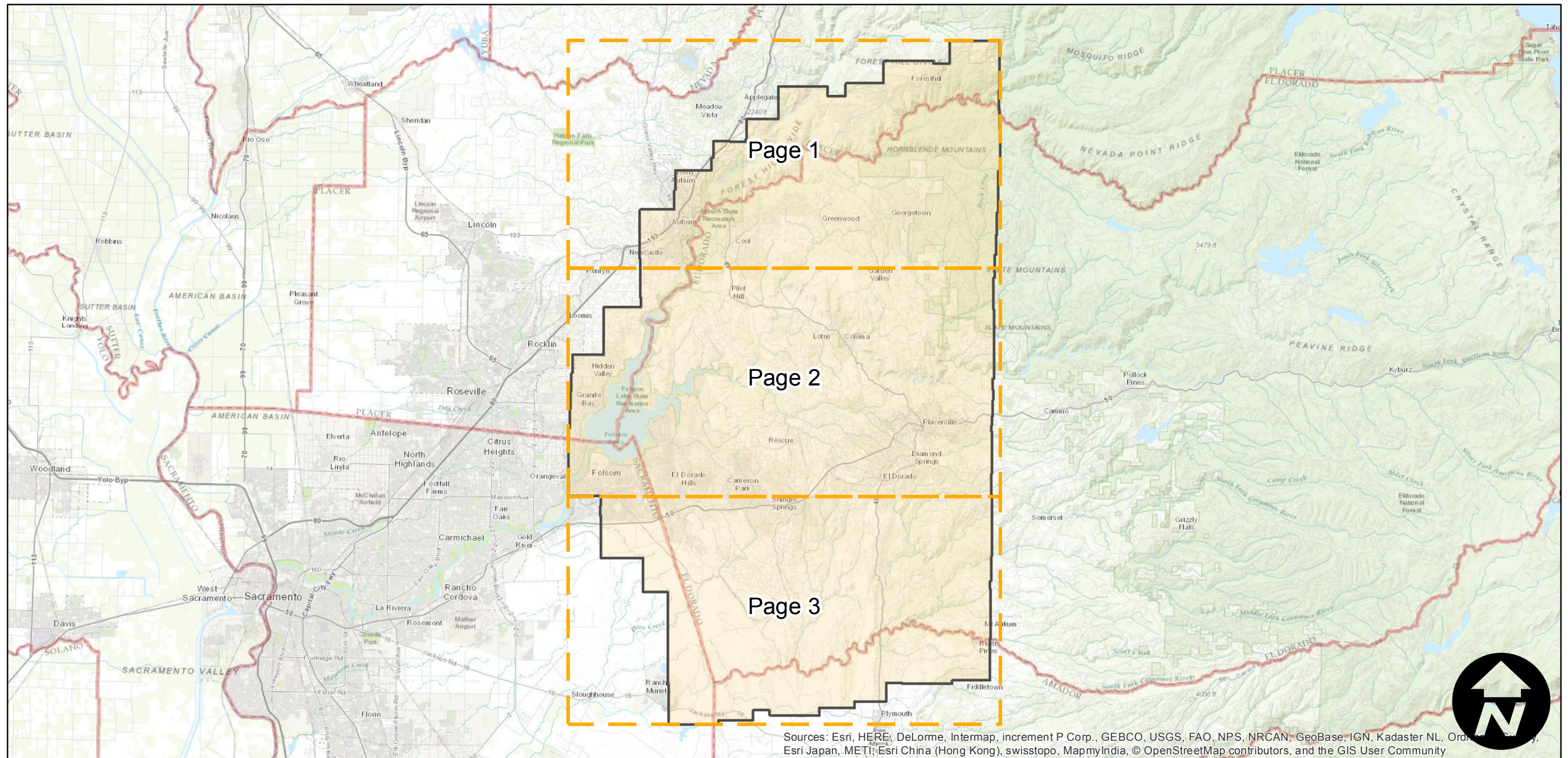
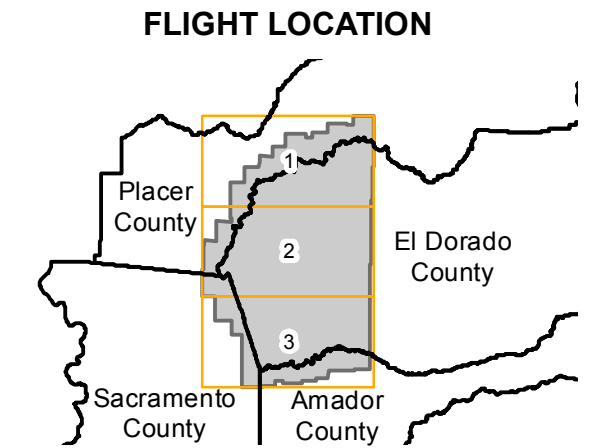
CAS-ED (1:20K)

Counties: El Dorado, Alpine, Amador, Placer, Sacramento
 Flight date(s): 07-29-1962 to 09-14-1962
 Scale: 1:20,000
 Overlap: 60%

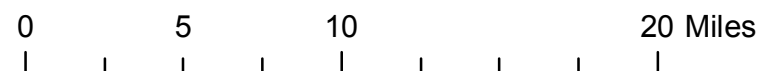
Complete Metadata:
<http://www.library.ucsb.edu/map-imagery-lab/aerial-photography-information>

Note: El Dorado County. Scale of imagery in eastern 2/3 of county is 1:15,840. Western 1/3 of county flown at 1:20,000.

- MIL owns frame
- MIL does not own frame



Sources: Esri, HERE, DeLorme, Intermap, increment P Corp., GEBCO, USGS, FAO, NPS, NRCAN, GeoBase, IGN, Kadaster NL, Ordnance Survey, Esri Japan, METI, Esri China (Hong Kong), swisstopo, MapmyIndia, © OpenStreetMap contributors, and the GIS User Community



Index to Aerial Photography
 Page Key

Scale of this index: 1:385,000

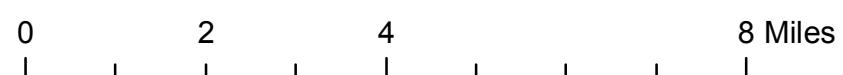
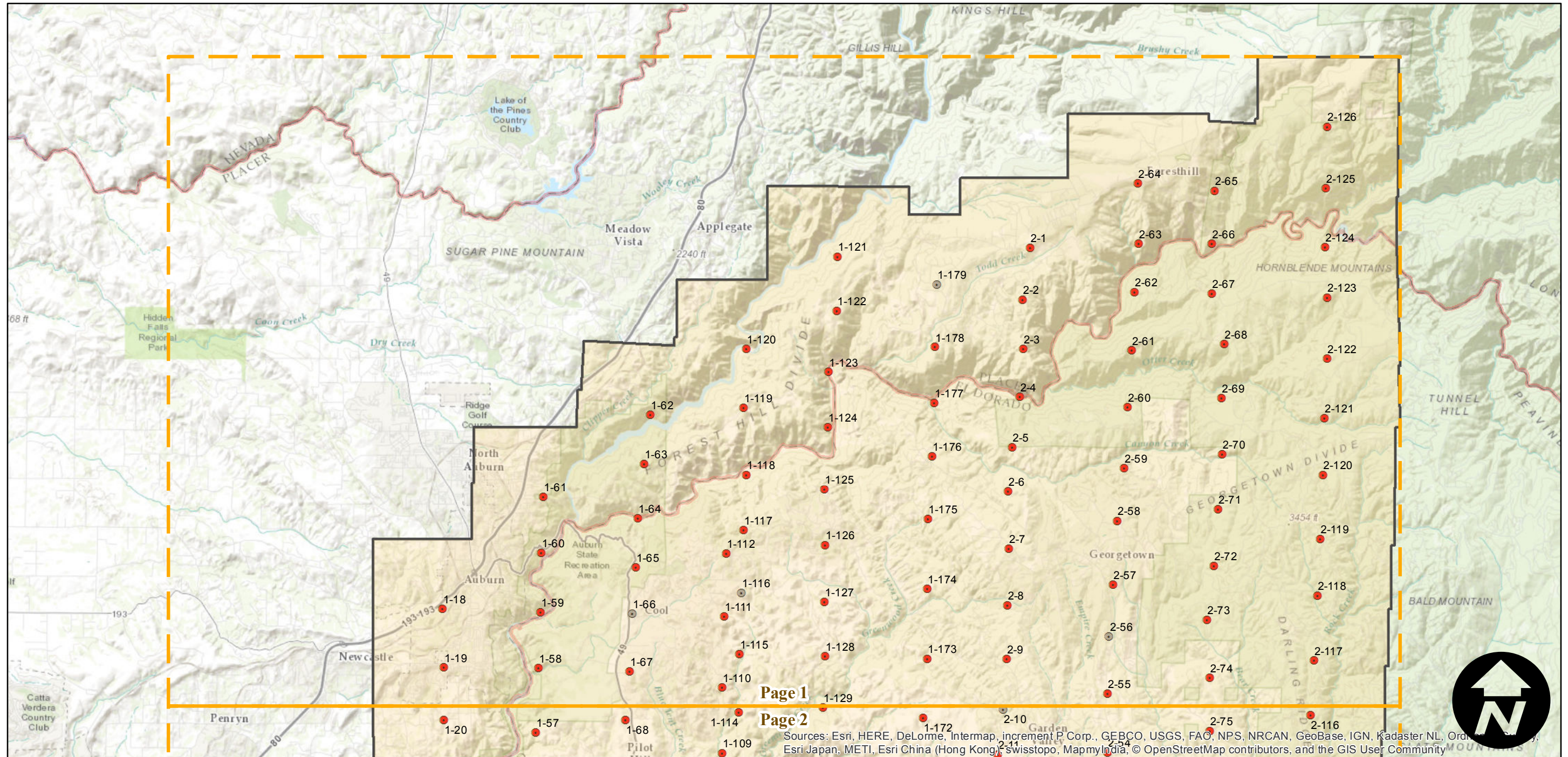
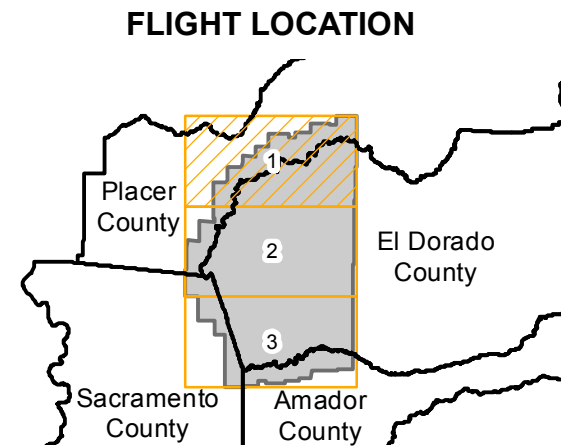
CAS-ED (1:20K)

Counties: El Dorado, Alpine, Amador, Placer, Sacramento
 Flight date(s): 07-29-1962 to 09-14-1962
 Scale: 1:20,000
 Overlap: 60%

Complete Metadata:
<http://www.library.ucsb.edu/map-imagery-lab/aerial-photography-information>

Note: El Dorado County. Scale of imagery in eastern 2/3 of county is 1:15,840. Western 1/3 of county flown at 1:20,000.

- MIL owns frame
- MIL does not own frame



Sources: Esri, HERE, DeLorme, Intermap, increment P Corp., GEBCO, USGS, FAO, NPS, NRCAN, GeoBase, IGN, Kadaster NL, Ordnance Survey, Esri Japan, METI, Esri China (Hong Kong), Swisstopo, MapmyIndia, © OpenStreetMap contributors, and the GIS User Community

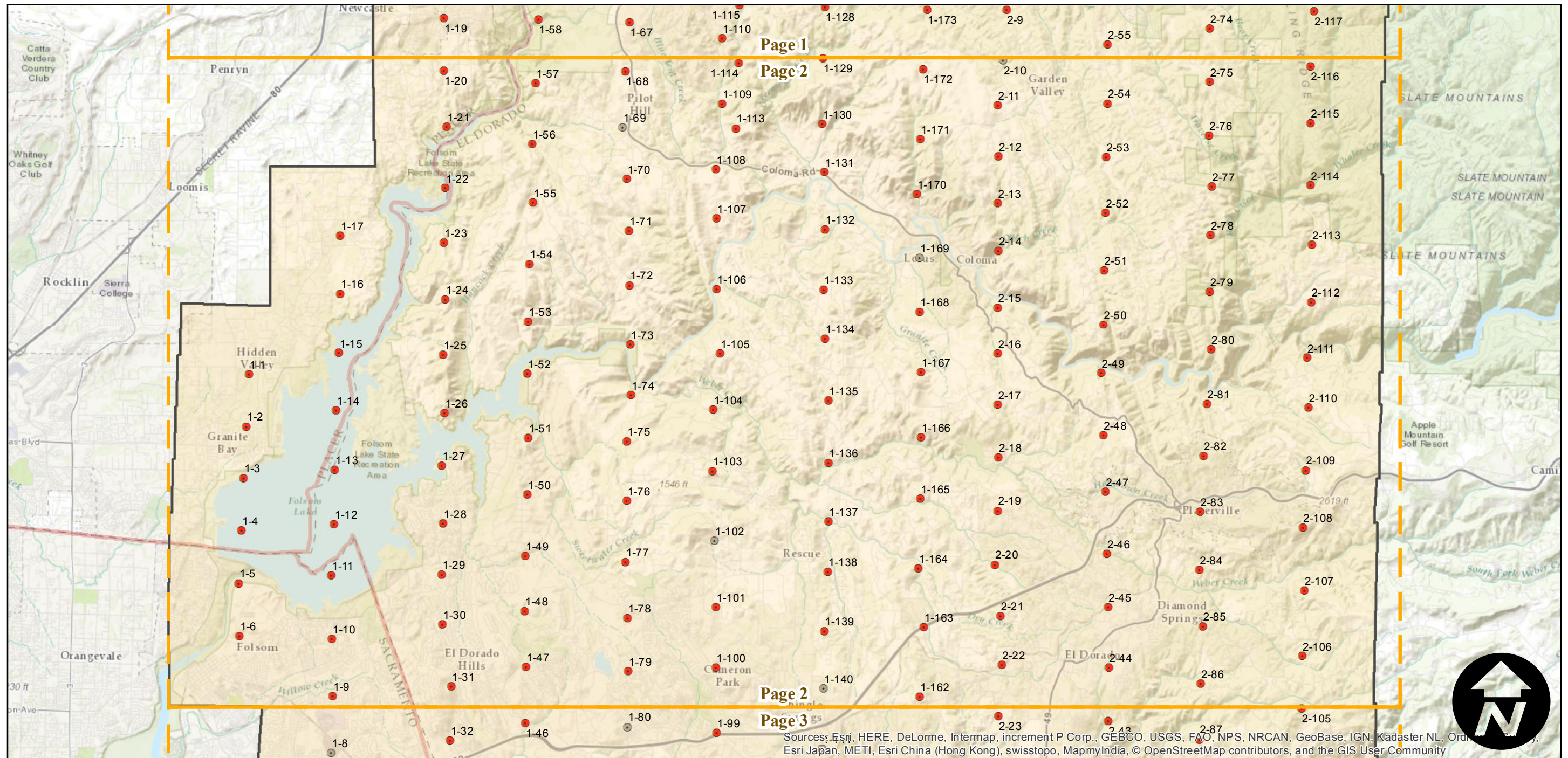
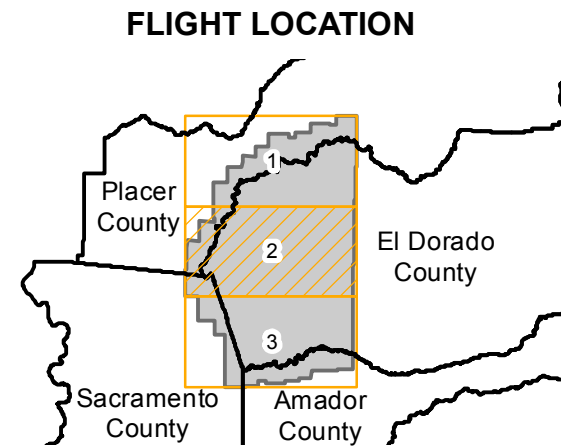
CAS-ED (1:20K)

Counties: El Dorado, Alpine, Amador, Placer, Sacramento
 Flight date(s): 07-29-1962 to 09-14-1962
 Scale: 1:20,000
 Overlap: 60%

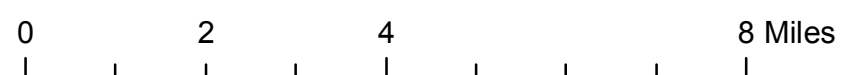
Complete Metadata:
<http://www.library.ucsb.edu/map-imagery-lab/aerial-photography-information>

Note: El Dorado County. Scale of imagery in eastern 2/3 of county is 1:15,840. Western 1/3 of county flown at 1:20,000.

- MIL owns frame
- MIL does not own frame



Sources: Esri, HERE, DeLorme, Intermap, increment P Corp., GEBCO, USGS, FAO, NPS, NRCAN, GeoBase, IGN, Kadaster NL, Ordnance Survey, Esri Japan, METI, Esri China (Hong Kong), swisstopo, MapmyIndia, © OpenStreetMap contributors, and the GIS User Community



CAS-ED (1:20K)

Counties: El Dorado, Alpine, Amador, Placer, Sacramento
 Flight date(s): 07-29-1962 to 09-14-1962
 Scale: 1:20,000
 Overlap: 60%

Complete Metadata:
<http://www.library.ucsb.edu/map-imagery-lab/aerial-photography-information>

Note: El Dorado County. Scale of imagery in eastern 2/3 of county is 1:15,840. Western 1/3 of county flown at 1:20,000.

- MIL owns frame
- MIL does not own frame

