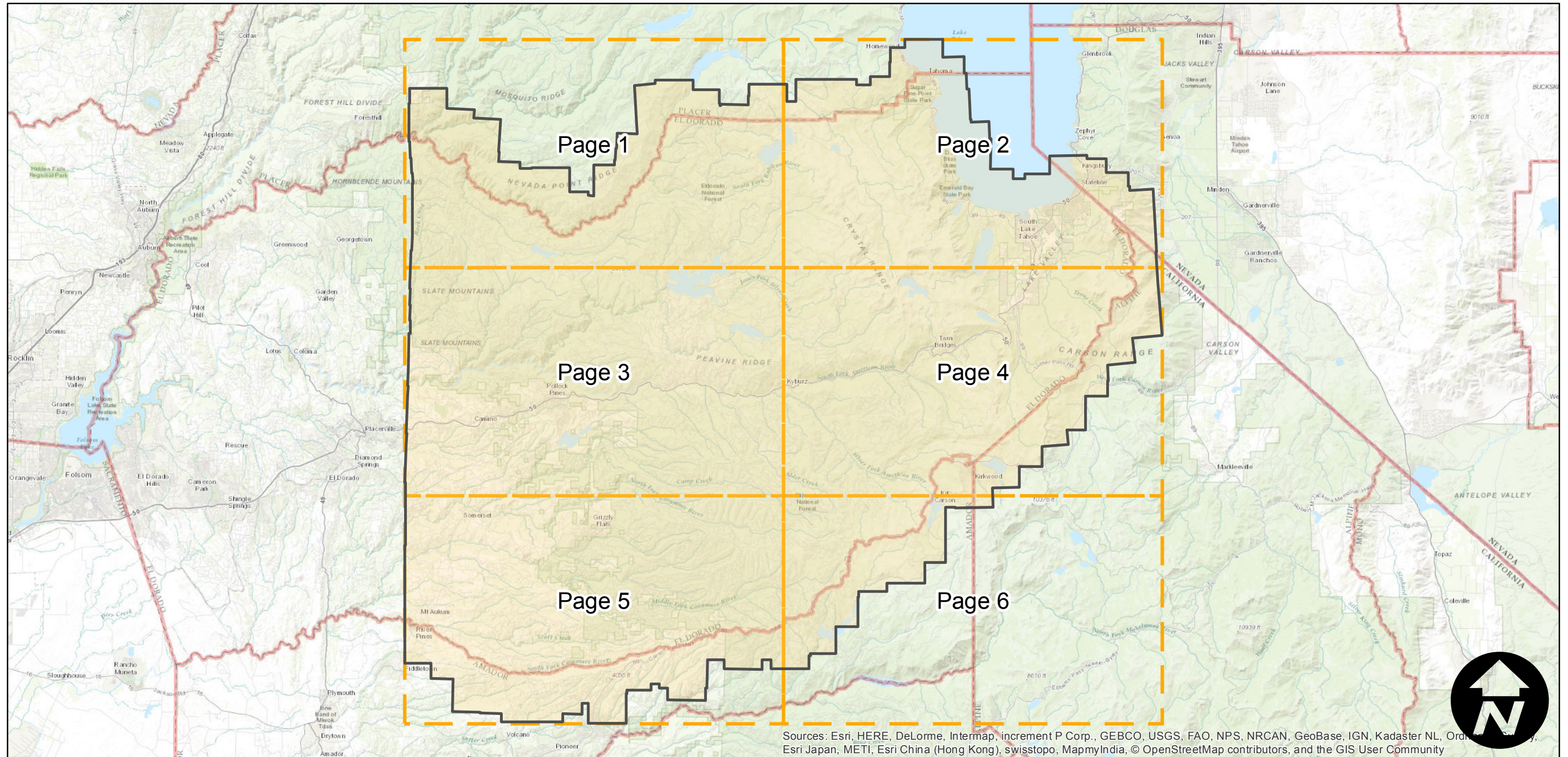
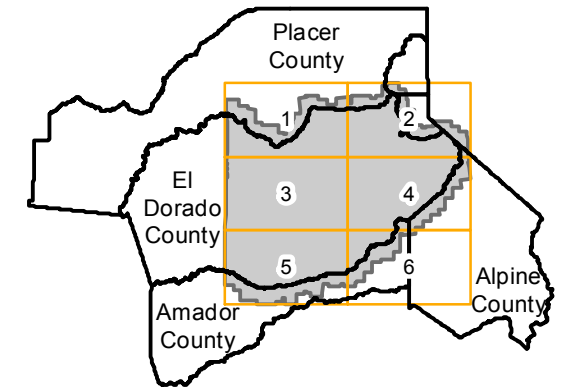


# CAS-ED (1:15K)

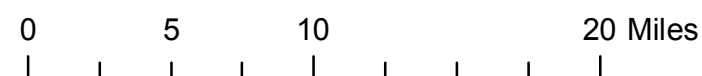
Counties: El Dorado, Placer, Amador, Alpine  
Flight date(s): 07-29-1962 to 09-14-1962  
Scale: 1:15,840  
Overlap: 60%

Note: El Dorado County. Scale of imagery in eastern 2/3 of county is 1:15,840. Western 1/3 of county flown at 1:20,000.

## FLIGHT LOCATION



Sources: Esri, HERE, DeLorme, Intermap, increment P Corp., GEBCO, USGS, FAO, NPS, NRCAN, GeoBase, IGN, Kadaster NL, Ordnance Survey, Esri Japan, METI, Esri China (Hong Kong), swisstopo, MapmyIndia, © OpenStreetMap contributors, and the GIS User Community



Index to Aerial Photography  
Page Key

Scale of this index: 1:425,000

# CAS-ED (1:15K)

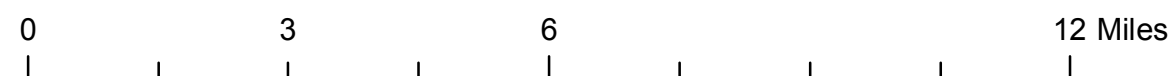
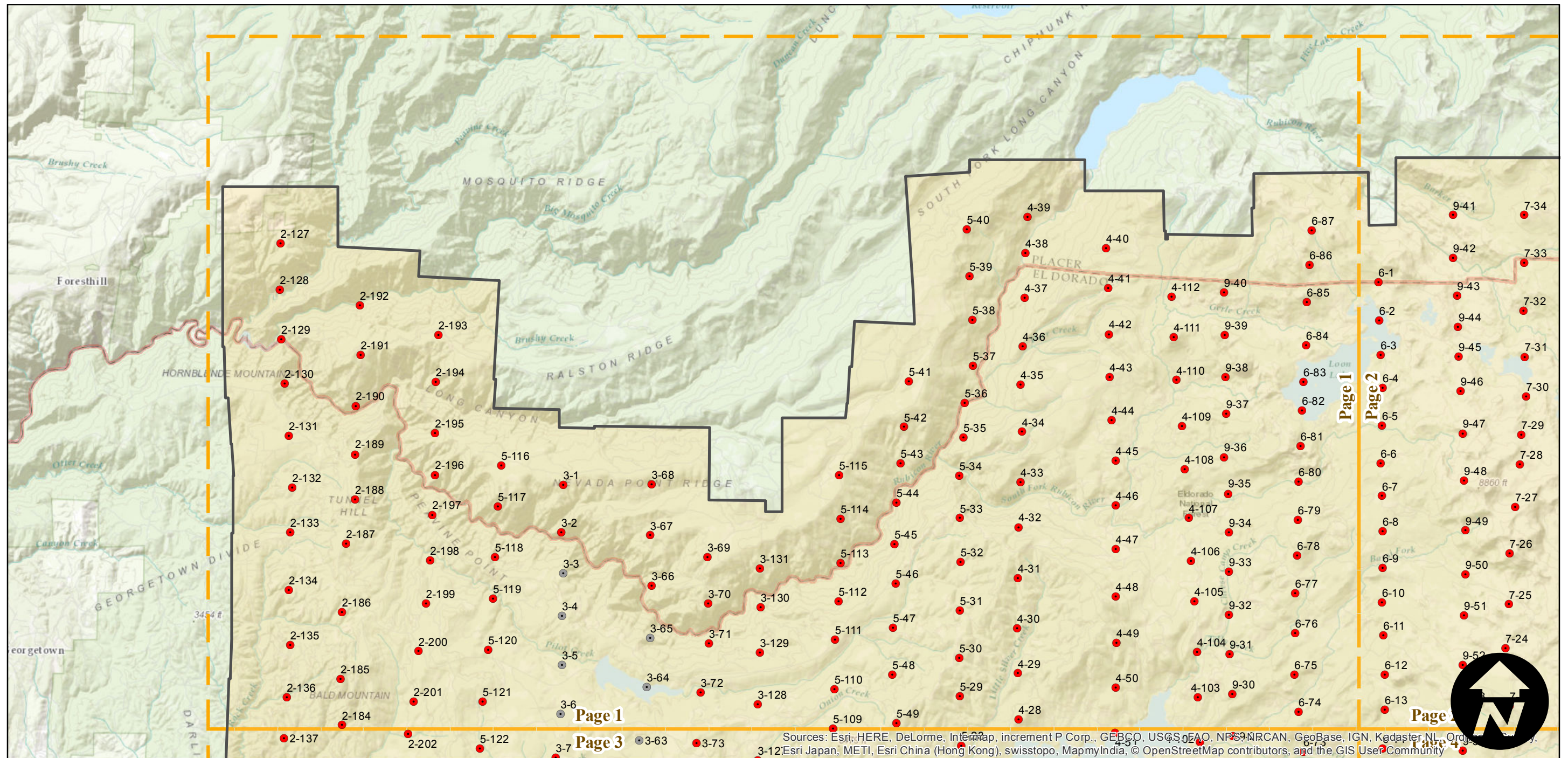
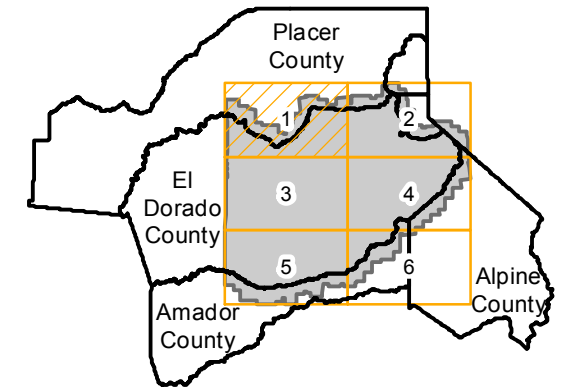
Counties: El Dorado, Placer, Amador, Alpine  
 Flight date(s): 07-29-1962 to 09-14-1962  
 Scale: 1:15,840  
 Overlap: 60%

Complete Metadata:  
<http://www.library.ucsb.edu/map-imagery-lab/aerial-photography-information>

Note: El Dorado County. Scale of imagery in eastern 2/3 of county is 1:15,840. Western 1/3 of county flown at 1:20,000.

- MIL owns frame
- MIL does not own frame

## FLIGHT LOCATION



Sources: Esri, HERE, DeLorme, Intermap, increment P Corp., GEBCO, USGS, FAO, NPS, NRCAN, GeoBase, IGN, Kadaster NL, Ordnance Survey, Esri Japan, METI, Esri China (Hong Kong), swisstopo, MapmyIndia, © OpenStreetMap contributors, and the GIS User Community

# CAS-ED (1:15K)

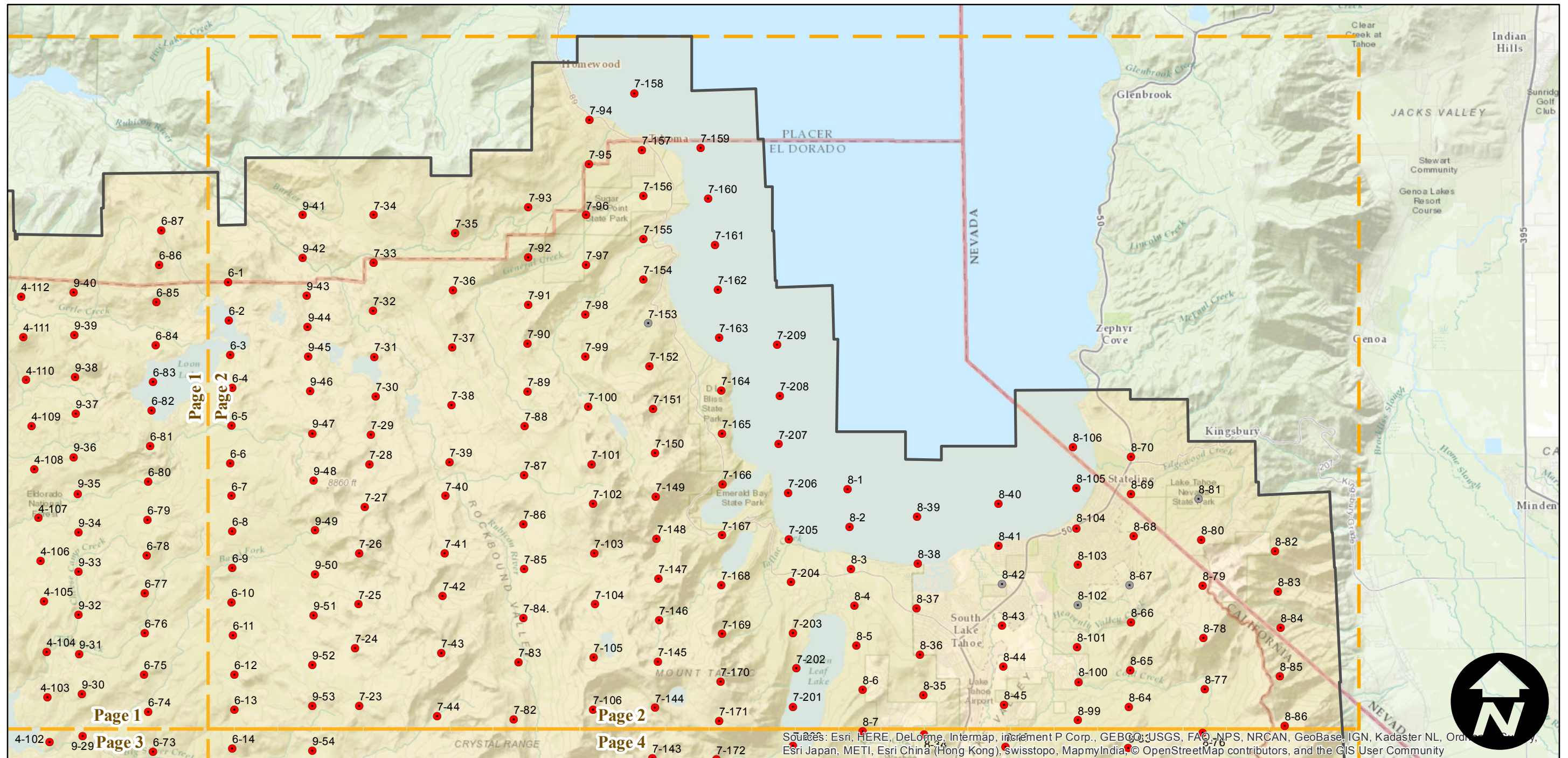
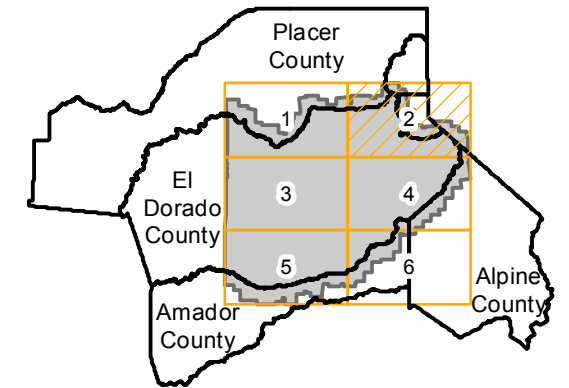
Counties: El Dorado, Placer, Amador, Alpine  
 Flight date(s): 07-29-1962 to 09-14-1962  
 Scale: 1:15,840  
 Overlap: 60%

Complete Metadata:  
<http://www.library.ucsb.edu/map-imagery-lab/aerial-photography-information>

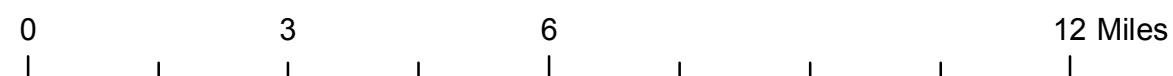
Note: El Dorado County. Scale of imagery in eastern 2/3 of county is 1:15,840. Western 1/3 of county flown at 1:20,000.

- MIL owns frame
- MIL does not own frame

## FLIGHT LOCATION



Sources: Esri, HERE, DeLorme, Intermap, increment P Corp., GEBCO, USGS, FAO, NPS, NRCAN, GeoBase, IGN, Kadaster NL, Ordnance Survey, Esri Japan, METI, Esri China (Hong Kong), Swisstopo, MapmyIndia, © OpenStreetMap contributors, and the GIS User Community



# CAS-ED (1:15K)

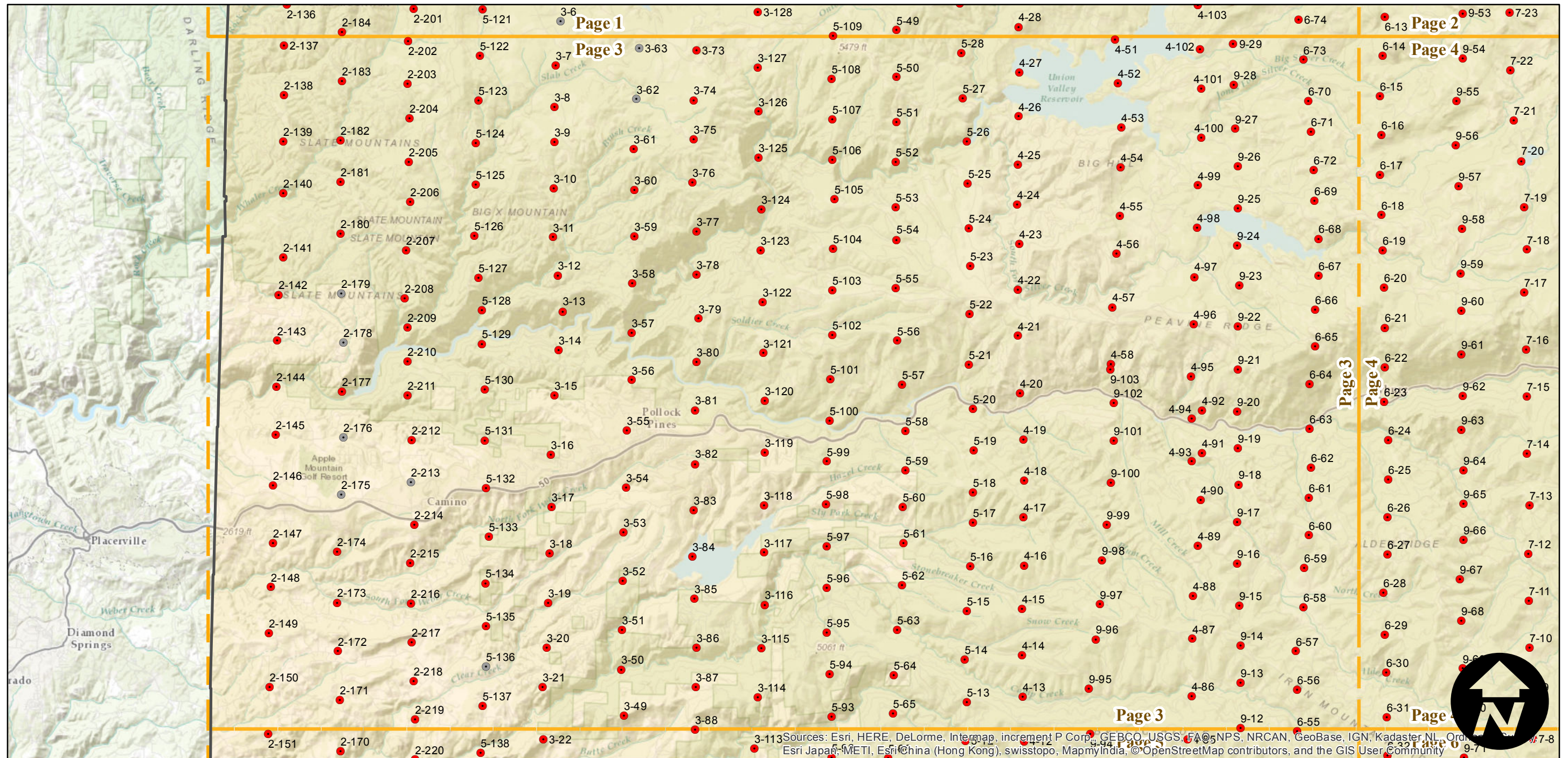
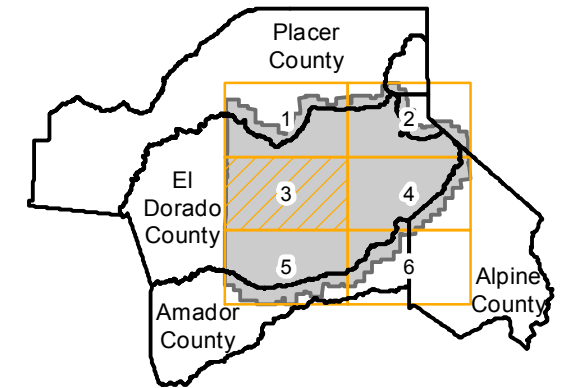
Counties: El Dorado, Placer, Amador, Alpine  
 Flight date(s): 07-29-1962 to 09-14-1962  
 Scale: 1:15,840  
 Overlap: 60%

Complete Metadata:  
<http://www.library.ucsb.edu/map-imagery-lab/aerial-photography-information>

Note: El Dorado County. Scale of imagery in eastern 2/3 of county is 1:15,840. Western 1/3 of county flown at 1:20,000.

- MIL owns frame
- MIL does not own frame

## FLIGHT LOCATION



0 3 6 12 Miles

Index to Aerial Photography  
 Page 3 of 6

Scale of this index: 1:140,000

# CAS-ED (1:15K)

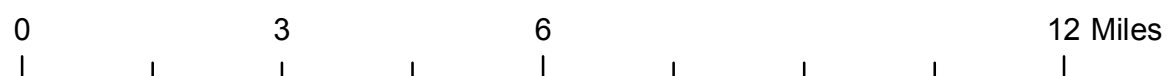
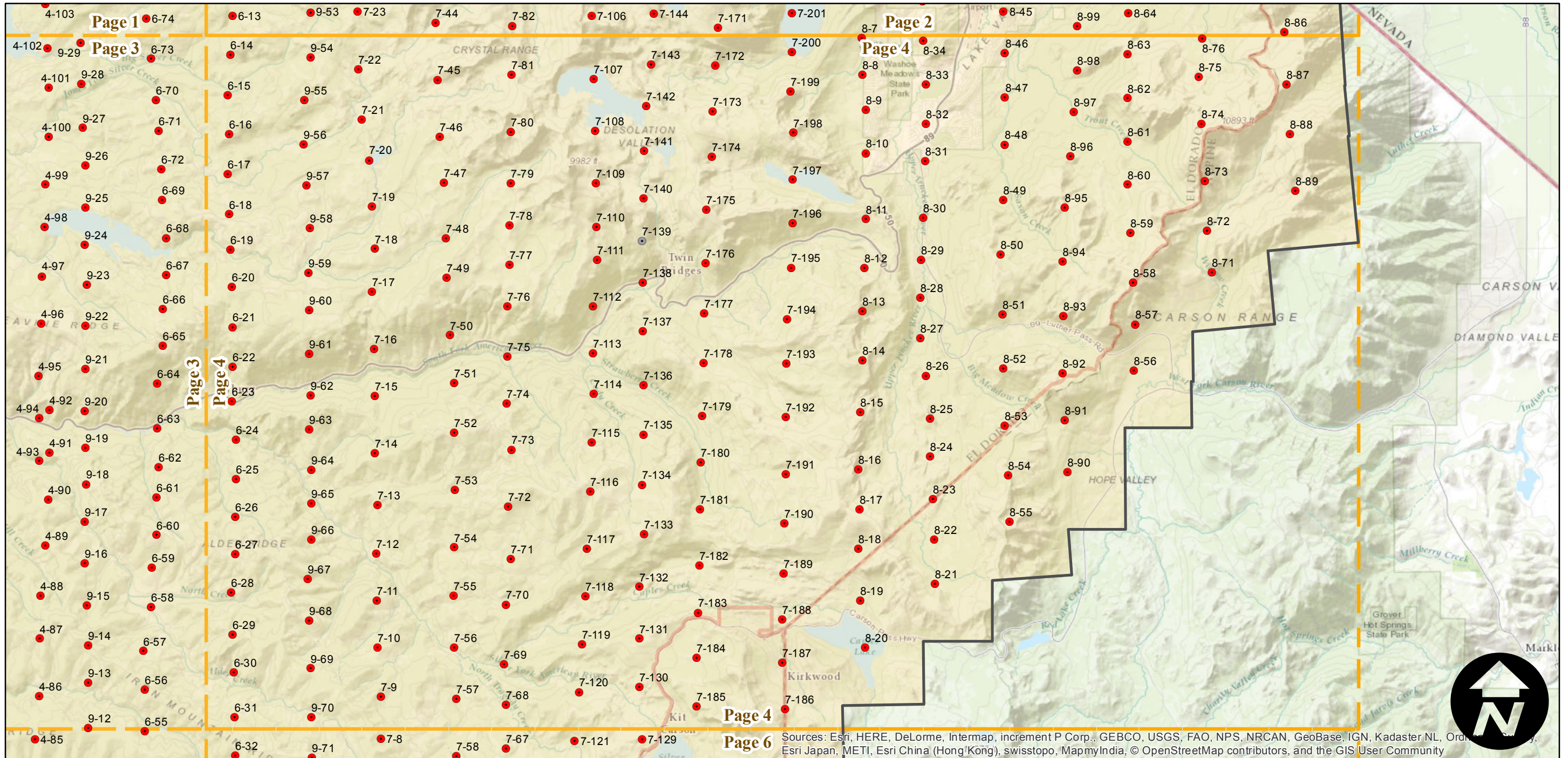
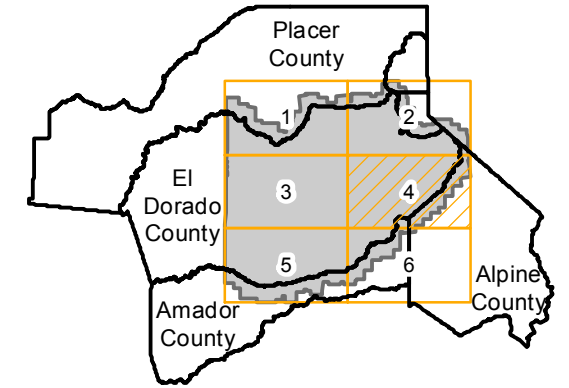
Counties: El Dorado, Placer, Amador, Alpine  
 Flight date(s): 07-29-1962 to 09-14-1962  
 Scale: 1:15,840  
 Overlap: 60%

Complete Metadata:  
<http://www.library.ucsb.edu/map-imagery-lab/aerial-photography-information>

Note: El Dorado County. Scale of imagery in eastern 2/3 of county is 1:15,840. Western 1/3 of county flown at 1:20,000.

- MIL owns frame
- MIL does not own frame

## FLIGHT LOCATION



Sources: Esri, HERE, DeLorme, Intermap, increment P Corp., GEBCO, USGS, FAO, NPS, NRCAN, GeoBase, IGN, Kadaster NL, Ordnance Survey, Esri Japan, METI, Esri China (Hong Kong), swisstopo, MapmyIndia, © OpenStreetMap contributors, and the GIS User Community



# CAS-ED (1:15K)

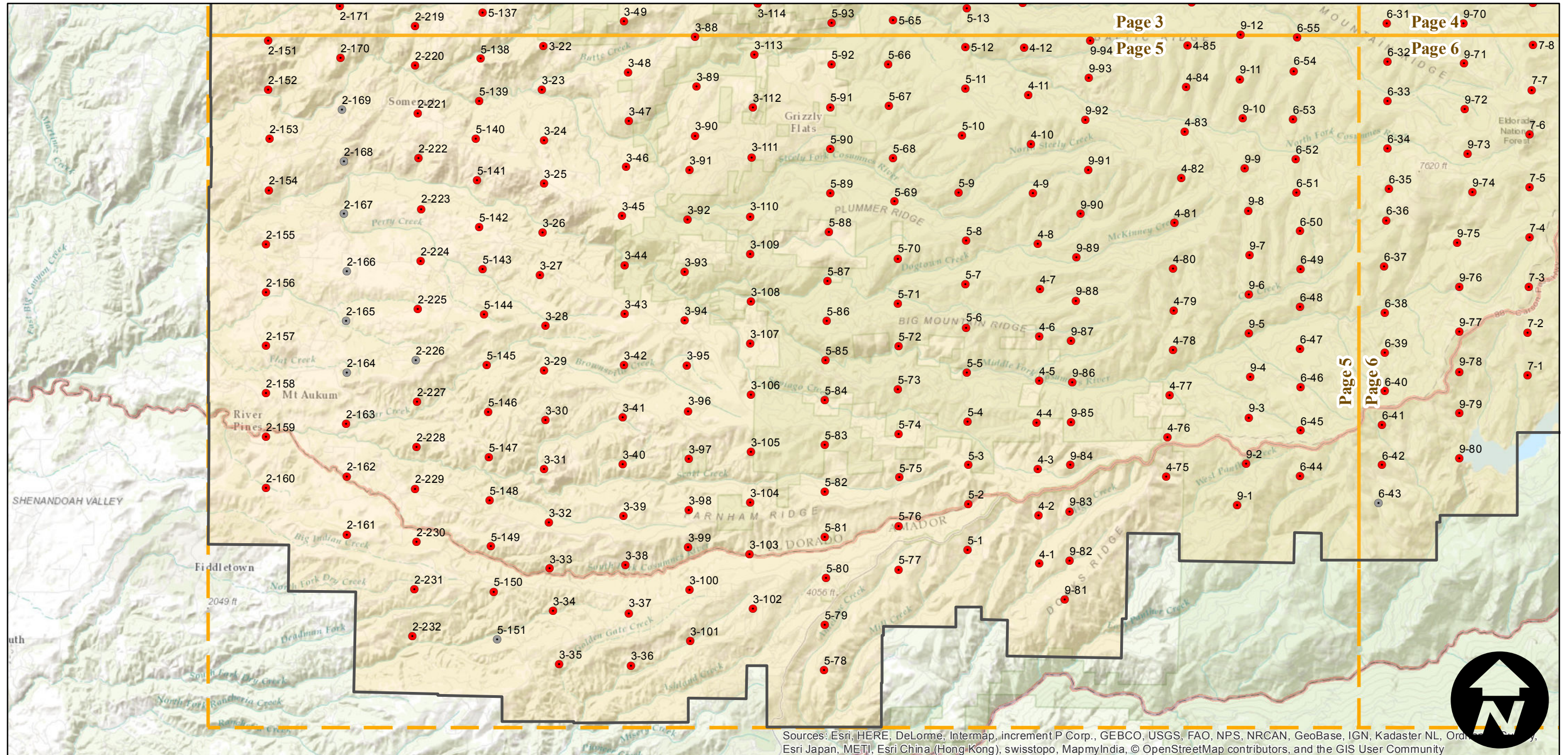
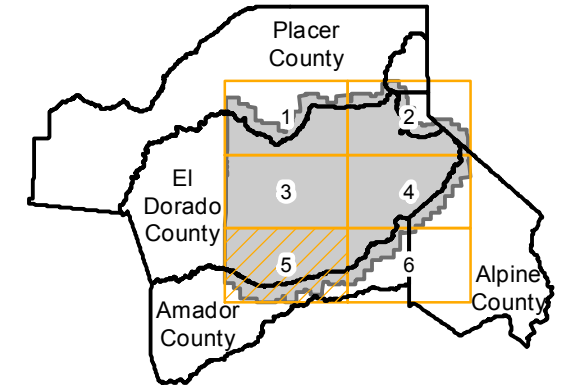
Counties: El Dorado, Placer, Amador, Alpine  
 Flight date(s): 07-29-1962 to 09-14-1962  
 Scale: 1:15,840  
 Overlap: 60%

Complete Metadata:  
<http://www.library.ucsb.edu/map-imagery-lab/aerial-photography-information>

Note: El Dorado County. Scale of imagery in eastern 2/3 of county is 1:15,840. Western 1/3 of county flown at 1:20,000.

- MIL owns frame
- MIL does not own frame

## FLIGHT LOCATION



Sources: Esri, HERE, DeLorme, Intermap, increment P Corp., GEBCO, USGS, FAO, NPS, NRCAN, GeoBase, IGN, Kadaster NL, Ordnance Survey, Esri Japan, METI, Esri China (Hong Kong), swisstopo, MapmyIndia, © OpenStreetMap contributors, and the GIS User Community

0 3 6 12 Miles

Index to Aerial Photography  
 Page 5 of 6

Scale of this index: 1:140,000

# CAS-ED (1:15K)

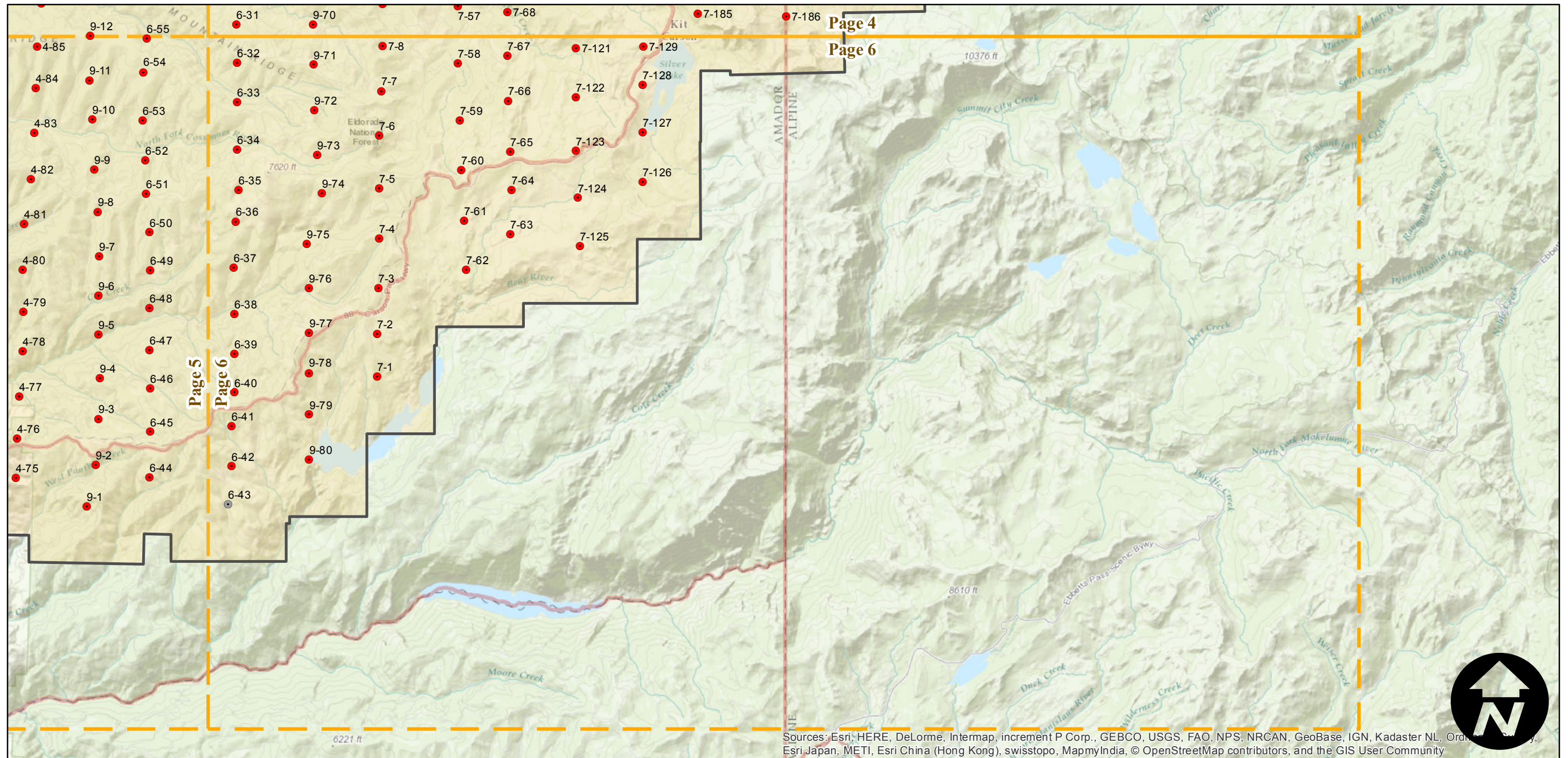
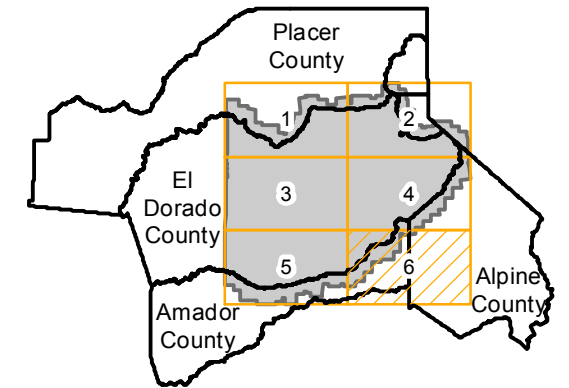
Counties: El Dorado, Placer, Amador, Alpine  
 Flight date(s): 07-29-1962 to 09-14-1962  
 Scale: 1:15,840  
 Overlap: 60%

Complete Metadata:  
<http://www.library.ucsb.edu/map-imagery-lab/aerial-photography-information>

Note: El Dorado County. Scale of imagery in eastern 2/3 of county is 1:15,840. Western 1/3 of county flown at 1:20,000.

- MIL owns frame
- MIL does not own frame

## FLIGHT LOCATION



Sources: Esri, HERE, DeLorme, Intermap, increment P Corp., GEBCO, USGS, FAO, NPS, NRCAN, GeoBase, IGN, Kadaster NL, Ordnance Survey, Esri Japan, METI, Esri China (Hong Kong), swisstopo, MapmyIndia, © OpenStreetMap contributors, and the GIS User Community

