

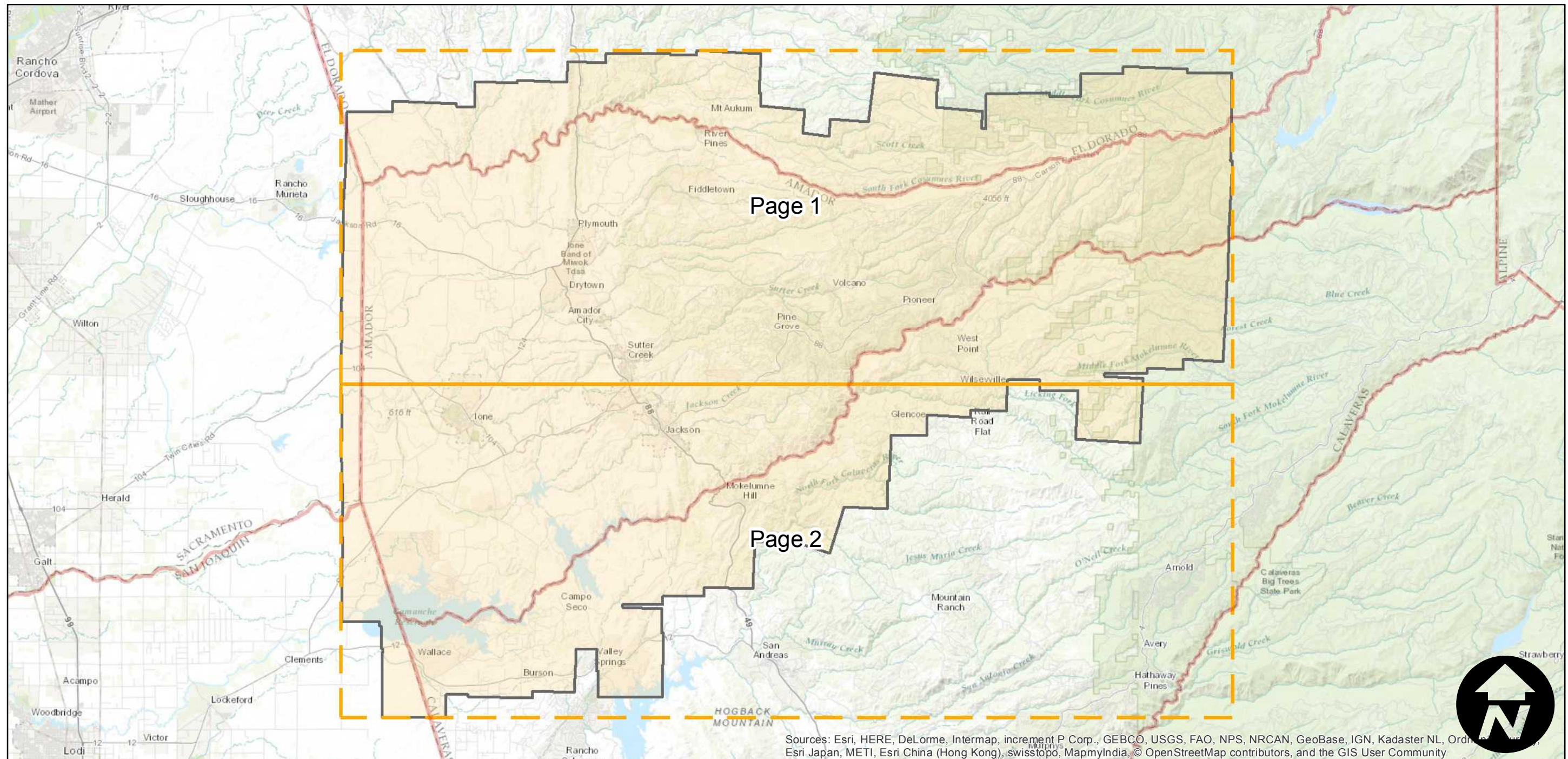
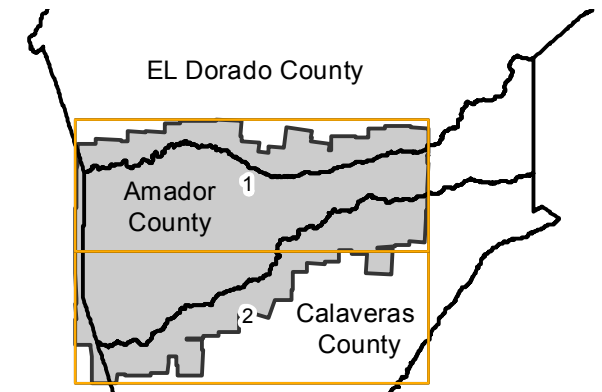
CAS-AMA (1:20K)

Counties: Amador, El Dorado, Calaveras
Flight date(s): 09-10-1962 to 09-18-1962
Scale: 1:20,000
Overlap: 60%

Note: Western 2/3 of county at 1:20,000. Eastern 1/3 of county at 1:15,840.

Complete Metadata:
<http://www.library.ucsb.edu/map-imagery-lab/aerial-photography-information>

FLIGHT LOCATION



Sources: Esri, HERE, DeLorme, Intermap, increment P Corp., GEBCO, USGS, FAO, NPS, NRCAN, GeoBase, IGN, Kadaster NL, Ordnance Survey, Esri Japan, METI, Esri China (Hong Kong), swisstopo, MapmyIndia, © OpenStreetMap contributors, and the GIS User Community

0 5 10 20 Miles

Index to Aerial Photography
Page Key

Scale of this index: 1:300,000

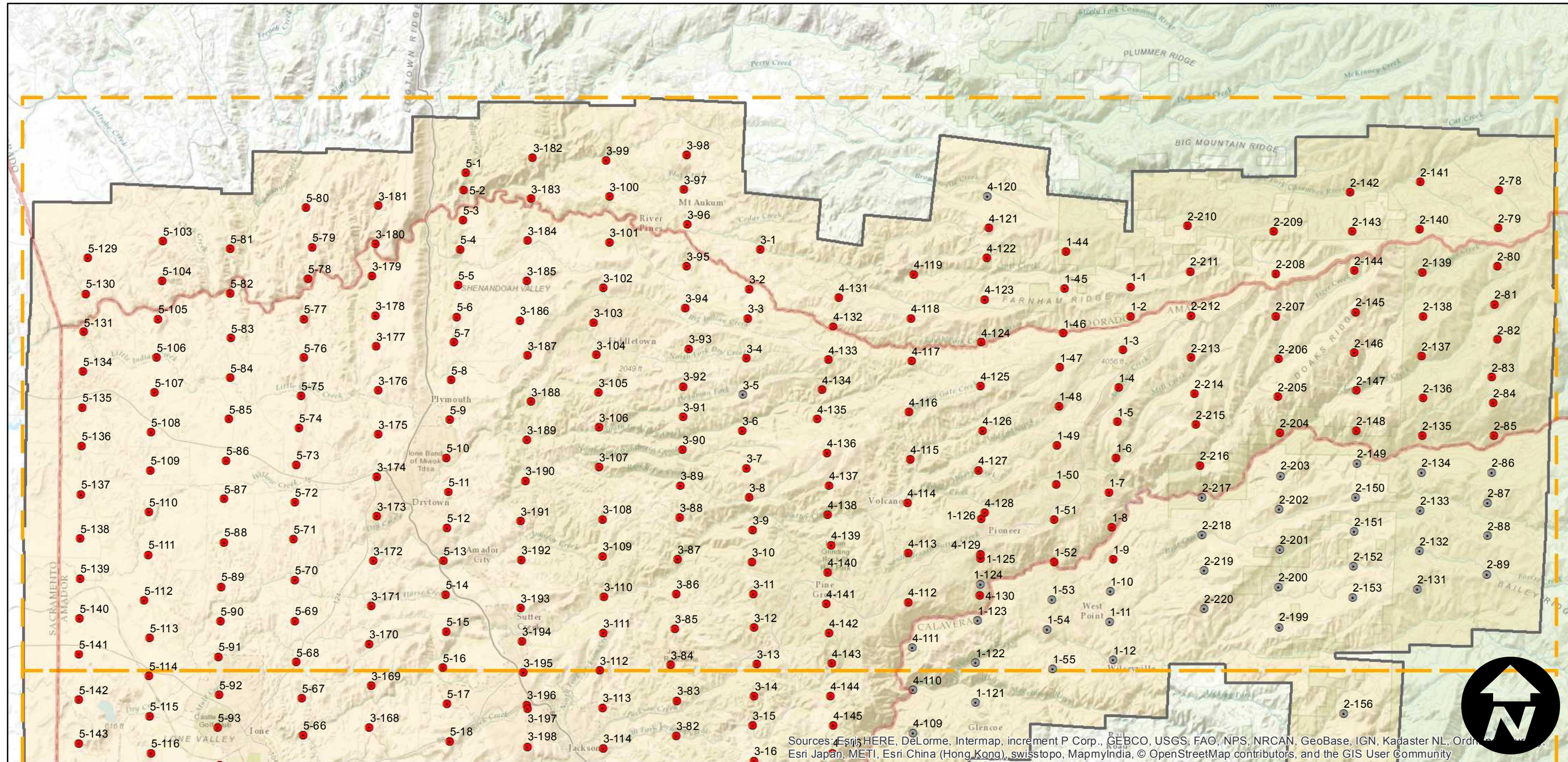
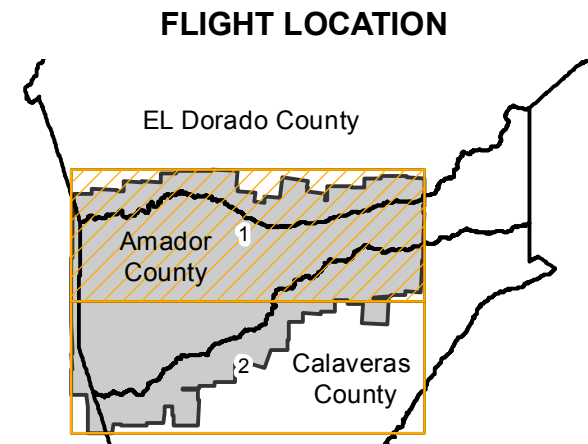
CAS-AMA (1:20K)

Counties: Amador, El Dorado, Calaveras
 Flight date(s): 09-10-1962 to 09-18-1962
 Scale: 1:20,000
 Overlap: 60%

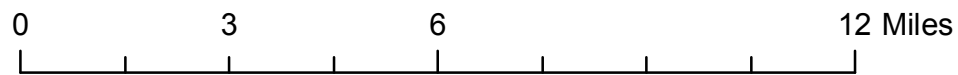
Complete Metadata:
<http://www.library.ucsb.edu/map-imagery-lab/aerial-photography-information>

Note: Western 2/3 of county at 1:20,000. Eastern 1/3 of county at 1:15,840.

- MIL owns frame
- MIL does not own frame



Sources: Esri, HERE, DeLorme, Intermap, increment P Corp., GEBCO, USGS, FAO, NPS, NRCAN, GeoBase, IGN, Kadaster NL, Ordnance Survey, Esri Japan, METI, Esri China (Hong Kong), swisstopo, MapmyIndia, © OpenStreetMap contributors, and the GIS User Community



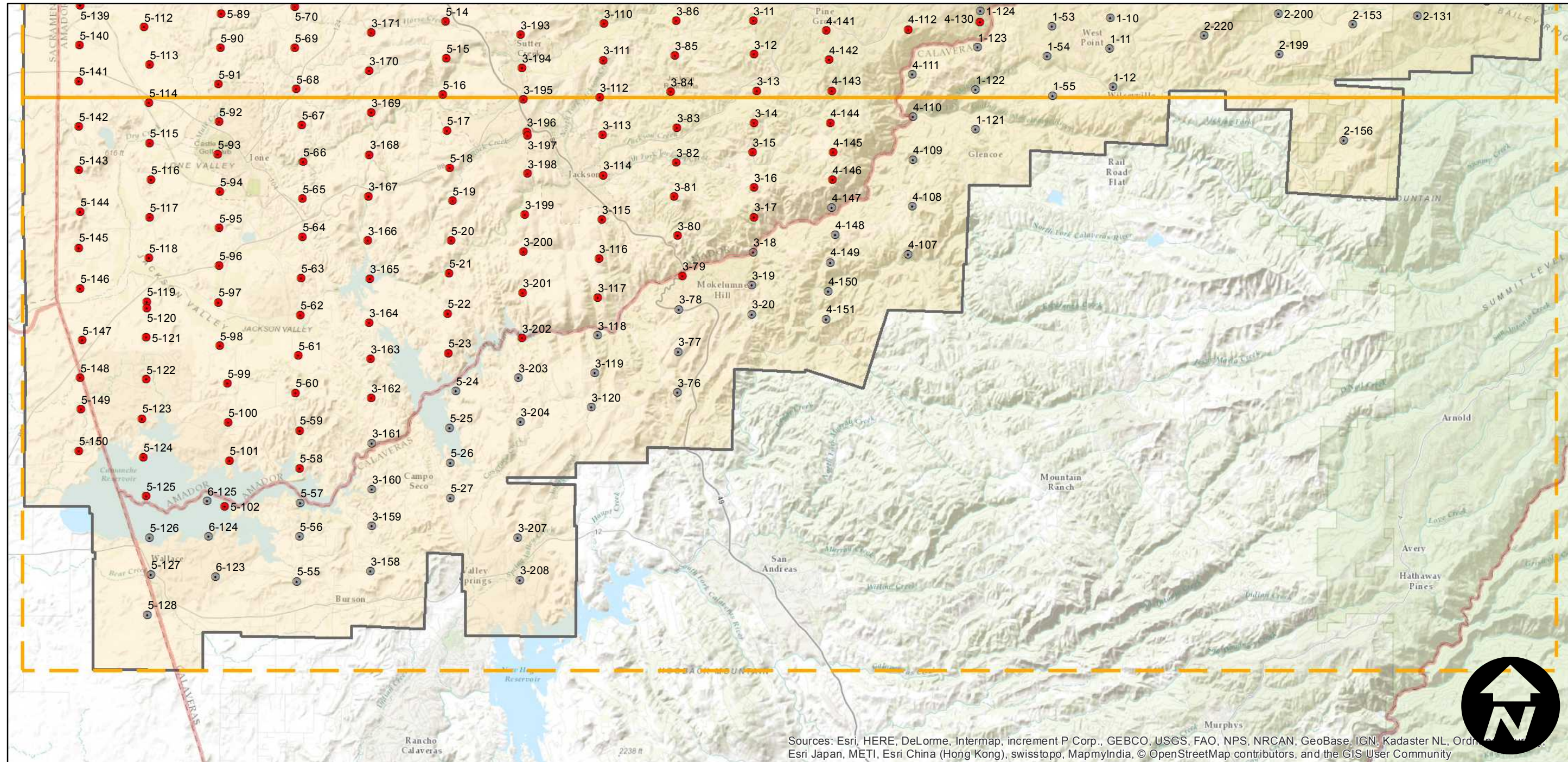
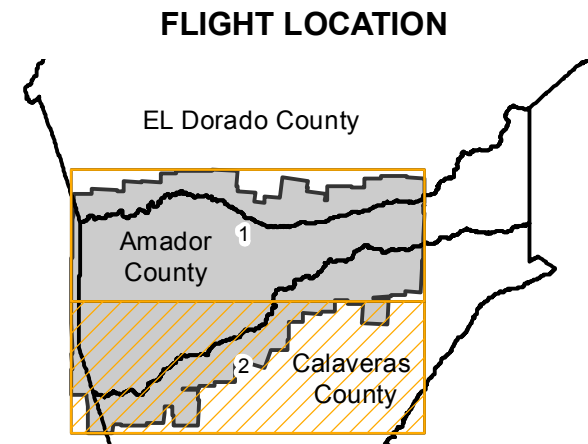
CAS-AMA (1:20K)

Counties: Amador, El Dorado, Calaveras
 Flight date(s): 09-10-1962 to 09-18-1962
 Scale: 1:20,000
 Overlap: 60%

Complete Metadata:
<http://www.library.ucsb.edu/map-imagery-lab/aerial-photography-information>

Note: Western 2/3 of county at 1:20,000. Eastern 1/3 of county at 1:15,840.

- MIL owns frame
- MIL does not own frame



0 3 6 12 Miles

Index to Aerial Photography
 Page 2 of 2

Scale of this index: 1:175,000

Sources: Esri, HERE, DeLorme, Intermap, increment P Corp., GEBCO, USGS, FAO, NPS, NRCAN, GeoBase, IGN, Kadaster NL, Ordnance Survey, Esri Japan, METI, Esri China (Hong Kong), swisstopo, MapmyIndia, © OpenStreetMap contributors, and the GIS User Community