

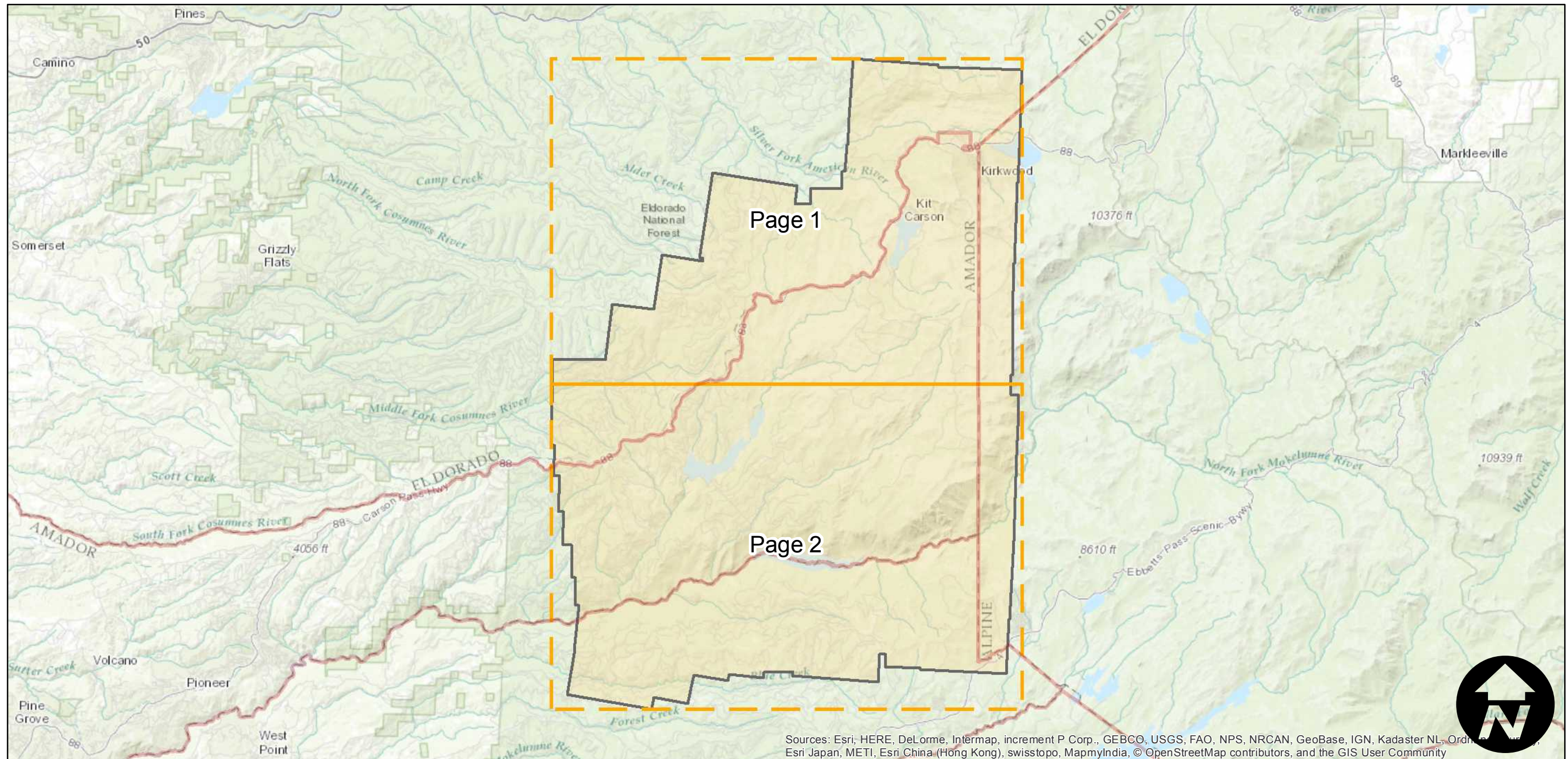
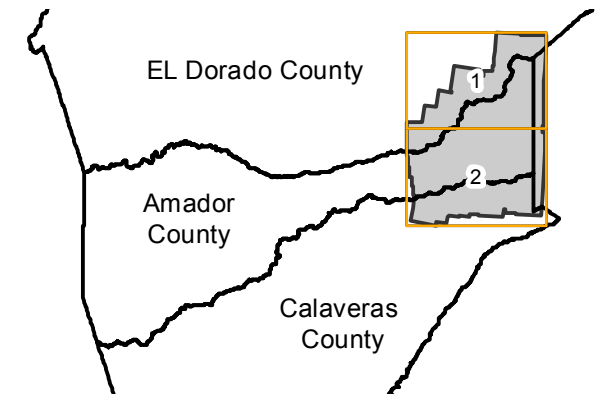
CAS-AMA (1:15K)

Counties: Amador, El Dorado, Calaveras
Flight date(s): 09-10-1962 to 09-18-1962
Scale: 1:15,840
Overlap: 60%

Note: Western 2/3 of county at 1:20,000. Eastern 1/3 of county at 1:15,840.

Complete Metadata:
<http://www.library.ucsb.edu/map-imagery-lab/aerial-photography-information>

FLIGHT LOCATION



Sources: Esri, HERE, DeLorme, Intermap, increment P Corp., GEBCO, USGS, FAO, NPS, NRCAN, GeoBase, IGN, Kadaster NL, Ordnance Survey, Esri Japan, METI, Esri China (Hong Kong), swisstopo, MapmyIndia, © OpenStreetMap contributors, and the GIS User Community

0 4 8 16 Miles

Index to Aerial Photography
Page Key

Scale of this index: 1:225,000

CAS-AMA (1:15K)

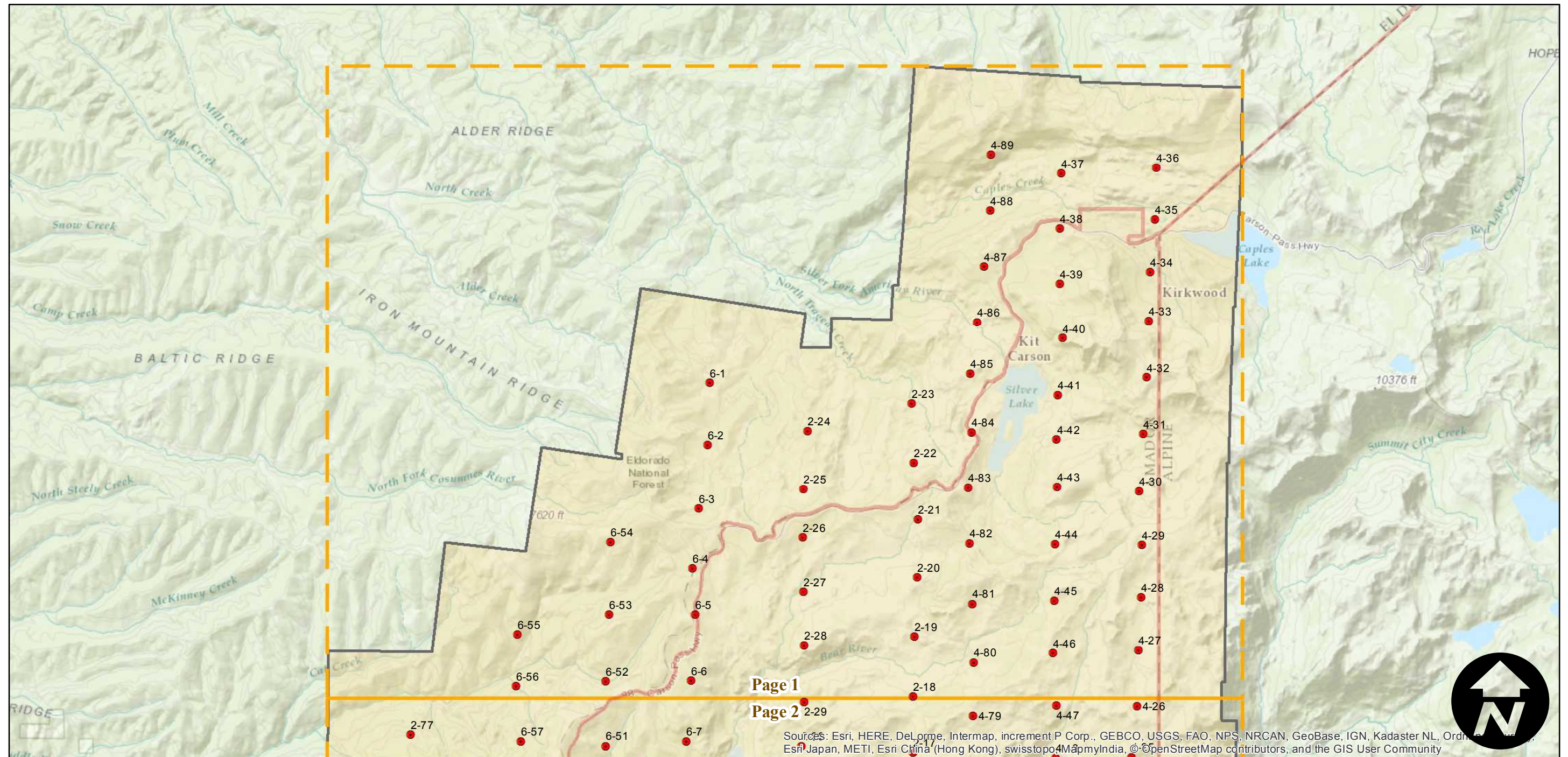
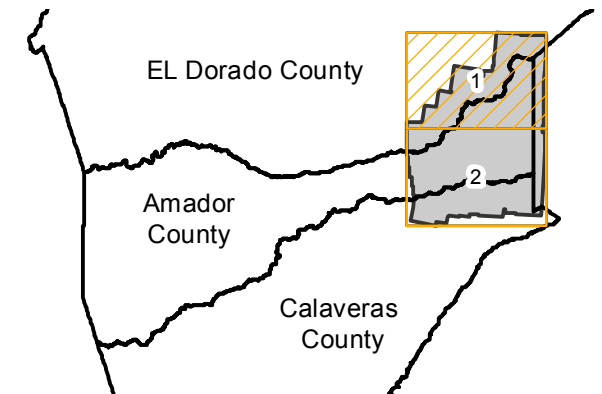
Counties: Amador, El Dorado, Calaveras
 Flight date(s): 09-10-1962 to 09-18-1962
 Scale: 1:15,840
 Overlap: 60%

Complete Metadata:
<http://www.library.ucsb.edu/map-imagery-lab/aerial-photography-information>

Note: Western 2/3 of county at 1:20,000. Eastern 1/3 of county at 1:15,840.

- MIL owns frame
- MIL does not own frame

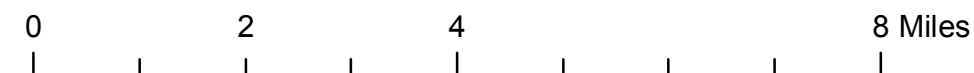
FLIGHT LOCATION



Page 1

Page 2

Sources: Esri, HERE, DeLorme, Intermap, increment P Corp., GEBCO, USGS, FAO, NPS, NRCAN, GeoBase, IGN, Kadaster NL, Ordnance Survey, Esri Japan, METI, Esri China (Hong Kong), swisstopo, MapmyIndia, ©OpenStreetMap contributors, and the GIS User Community



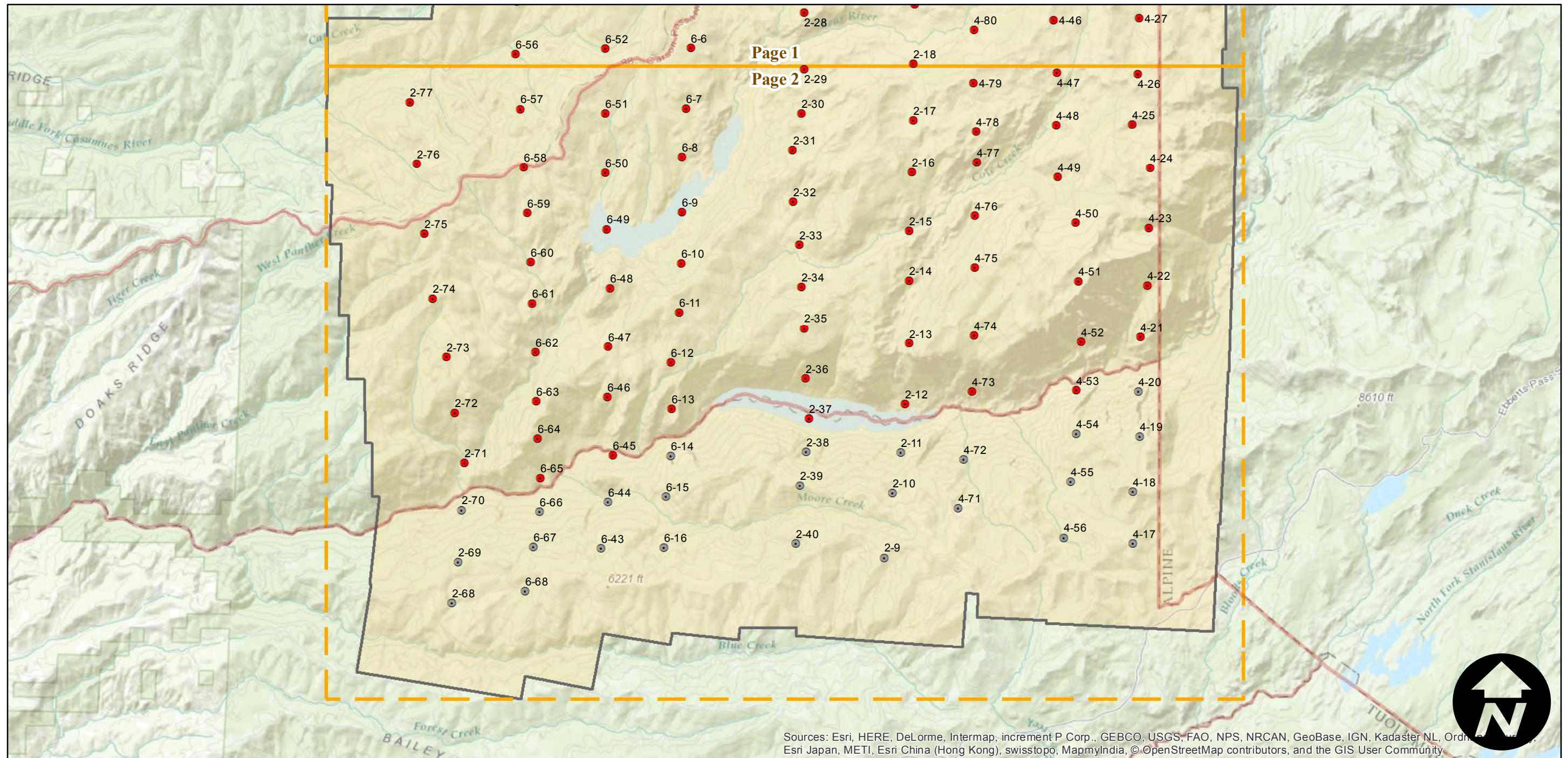
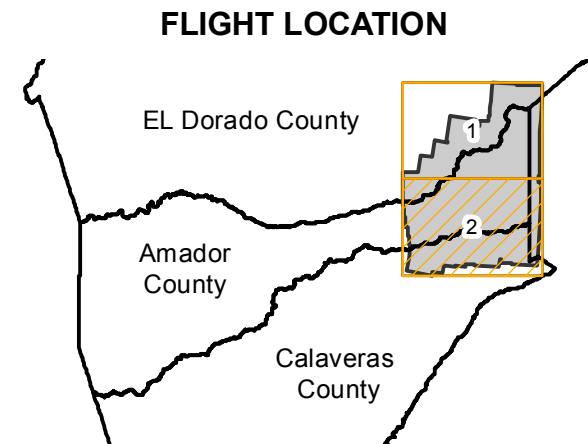
CAS-AMA (1:15K)

Counties: Amador, El Dorado, Calaveras
Flight date(s): 09-10-1962 to 09-18-1962
Scale: 1:15,840
Overlap: 60%

Complete Metadata:
<http://www.library.ucsb.edu/map-imagery-lab/aerial-photography-information>

Note: Western 2/3 of county at 1:20,000. Eastern 1/3 of county at 1:15,840.

- MIL owns frame
- MIL does not own frame



Sources: Esri, HERE, DeLorme, Intermap, increment P Corp., GEBCO, USGS, FAO, NPS, NRCAN, GeoBase, IGN, Kadaster NL, Ordnance Survey, Esri Japan, METI, Esri China (Hong Kong), swisstopo, MapmyIndia, © OpenStreetMap contributors, and the GIS User Community

0 2 4 8 Miles

Index to Aerial Photography
Page 2 of 2

Scale of this index: 1:115,000