

CAS-623

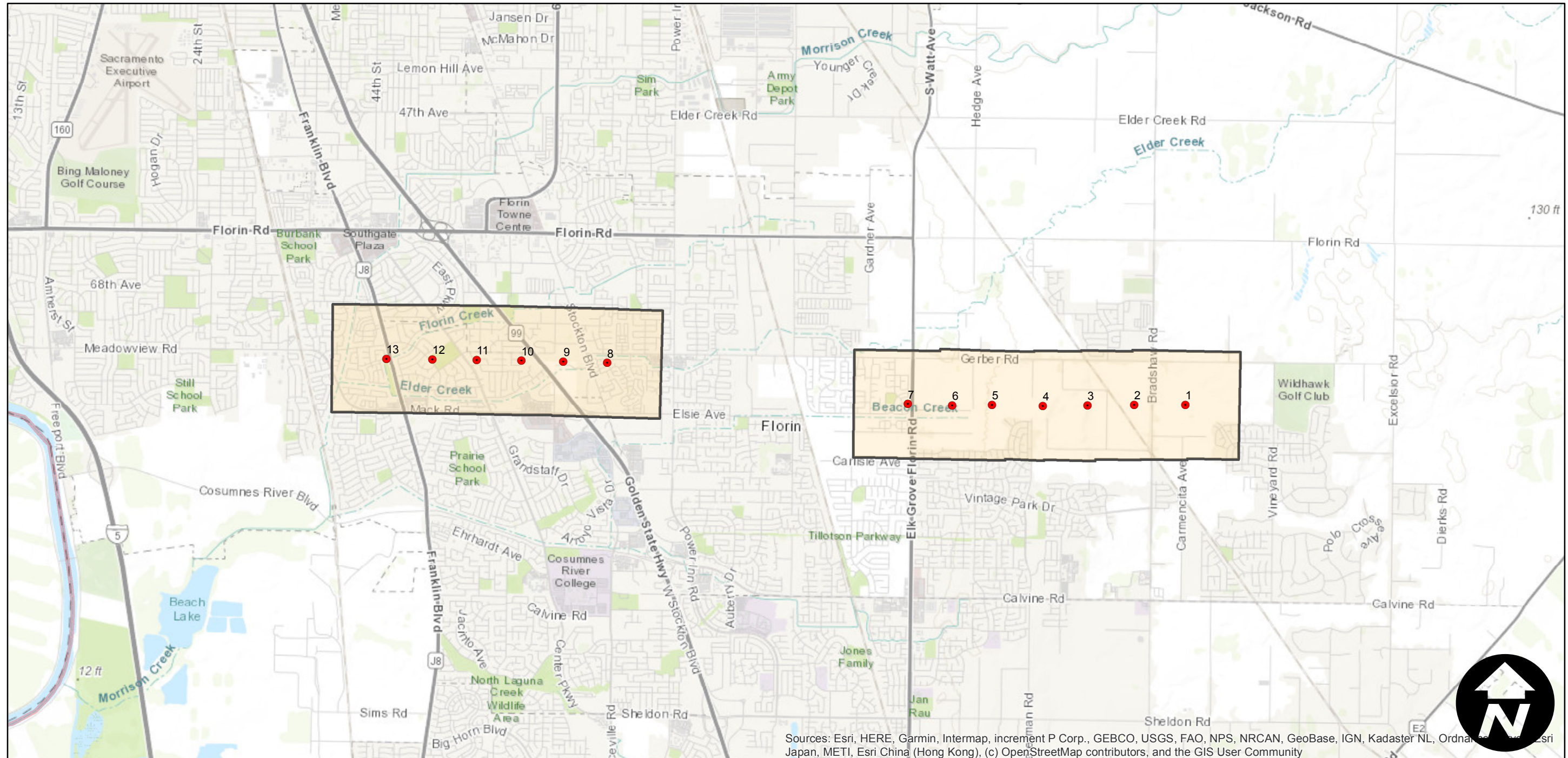
Counties: Sacramento
Flight date(s): 10-14-1958 to 10-21-1958
Scale: 1:6,360
Overlap: 60%

Note: Florin: vicinity of Gerber Road from Bradshaw Road to Franklin Boulevard. Imagery acquired 1992.

FLIGHT LOCATION



Complete Metadata:
<https://www.library.ucsb.edu/src/airphotos/aerial-photography-information>



Sources: Esri, HERE, Garmin, Intermap, increment P Corp., GEBCO, USGS, FAO, NPS, NRCAN, GeoBase, IGN, Kadaster NL, Ordnance Survey, Esri Japan, METI, Esri China (Hong Kong), (c) OpenStreetMap contributors, and the GIS User Community

0 1 2 4 Miles

Index to Aerial Photography
Page 1 of 1

Scale of this index: 1:55,000