

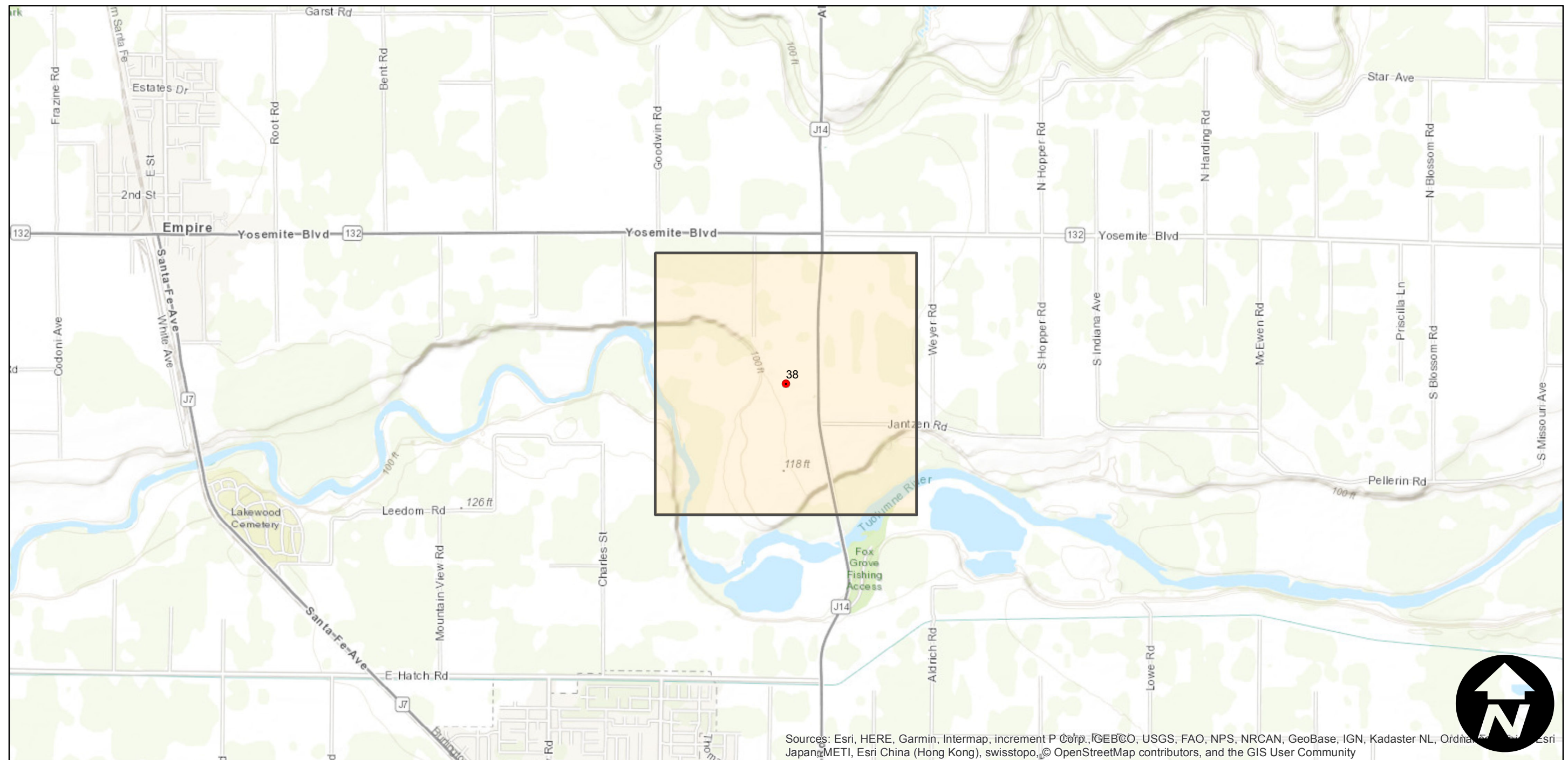
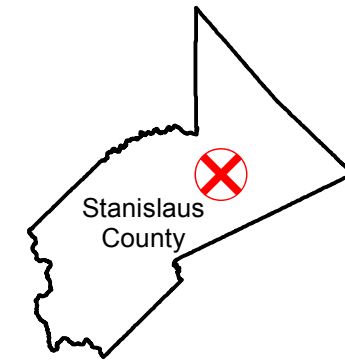
# CAS-4028 (1:8.4K)

Counties: Stanislaus  
Flight date(s): 02-17-1974 to 02-22-1974  
Scale: 1:8,400  
Overlap: 0%

Complete Metadata:  
<https://www.library.ucsb.edu/src/airphotos/aerial-photography-information>

Note: Woodward reservoir and vicinity; Tuolumne River at intersection of Geer Road, north of Hughson. Imagery acquired October 2009.

## FLIGHT LOCATION



Sources: Esri, HERE, Garmin, Intermap, increment P Corp., GEBCO, USGS, FAO, NPS, NRCAN, GeoBase, IGN, Kadaster NL, Ordnance Survey, Esri Japan, METI, Esri China (Hong Kong), swisstopo, © OpenStreetMap contributors, and the GIS User Community

0 0.5 1 2 Miles

Index to Aerial Photography  
Page 1 of 1

Scale of this index: 1:30,000