

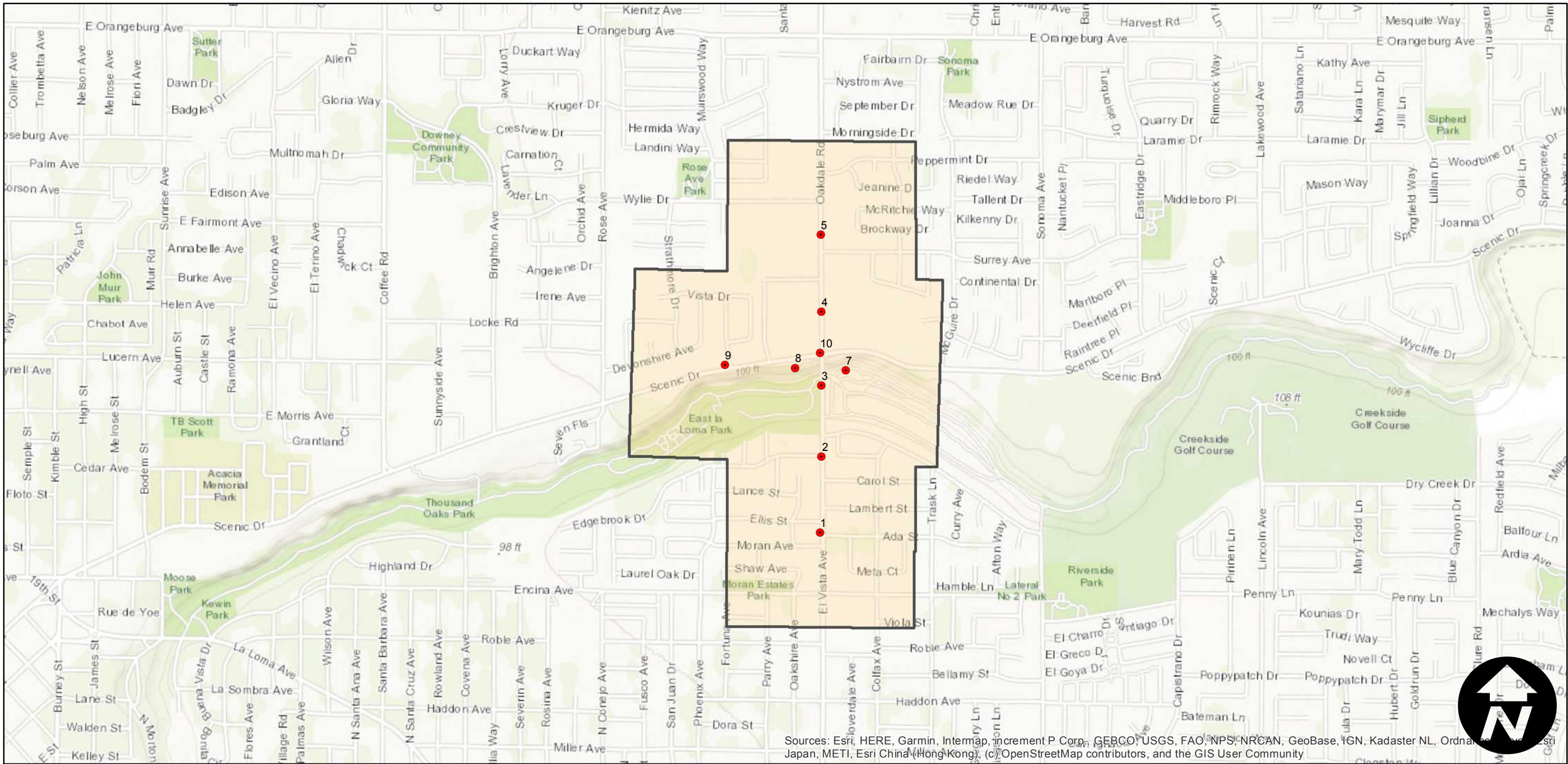
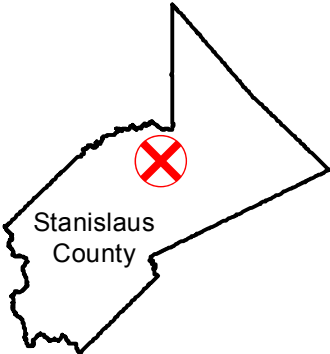
CAS-2776

Counties: Stanislaus  
Flight date(s): 02-18-1970  
Scale: 1:3,000  
Overlap: 60%

Complete Metadata:  
<https://www.library.ucsb.edu/src/airphotos/aerial-photography-information>

Note: Modesto: Intersection of Oakdale Road/El Vista Avenue and Scenic Drive/Dry Creek. Photograph number 6 not held in MIL's collection. Scale printed on photographs is incorrect. Imagery acquired October 2009.

FLIGHT LOCATION



0 0.25 0.5 1 Miles

Index to Aerial Photography  
Page 1 of 1

Scale of this index: 1:15,000