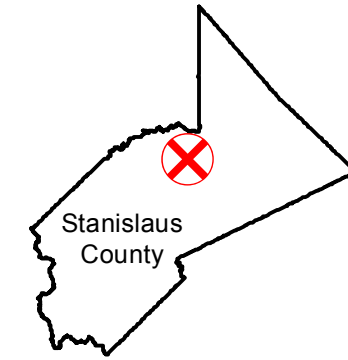


# CAS-2433

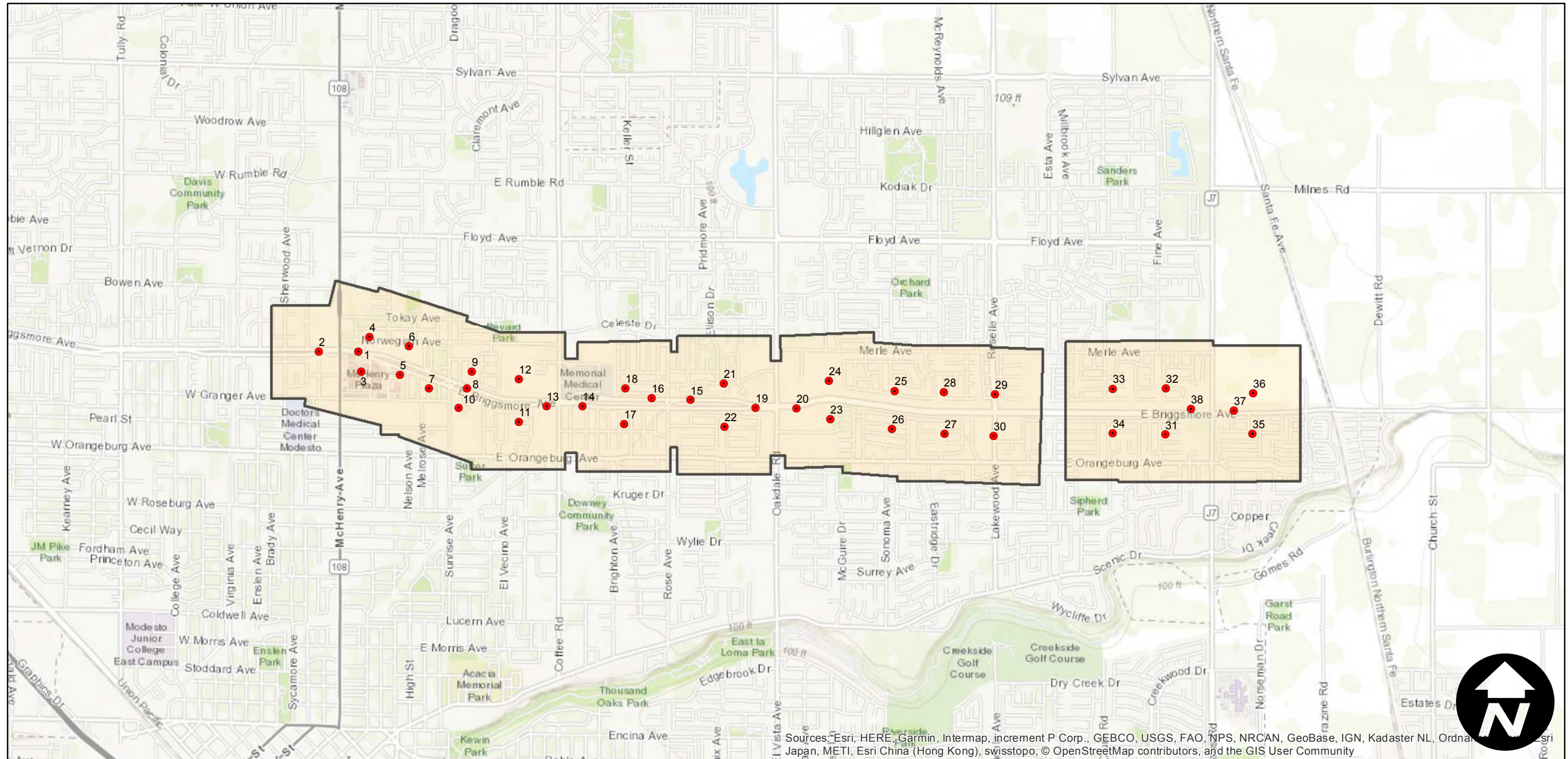
Counties: Stanislaus  
Flight date(s): 10-10-1968  
Scale: 1:3,000  
Overlap: 60%

Note: Canal Lateral No. 3, northeast Modesto; vicinity of East Briggsmore Avenue, from McHenry Avenue to Parker Ranch Way. Imagery acquired October 2009.

## FLIGHT LOCATION



Complete Metadata:  
<https://www.library.ucsb.edu/src/airphotos/aerial-photography-information>



Sources: Esri, HERE, Garmin, Intermap, increment P Corp., GEBCO, USGS, FAO, NPS, NRCAN, GeoBase, IGN, Kadaster NL, Ordnance Survey, Esri Japan, METI, Esri China (Hong Kong), swisstopo, © OpenStreetMap contributors, and the GIS User Community



0 0.5 1 2 Miles

Index to Aerial Photography  
Page 1 of 1

Scale of this index: 1:30,000