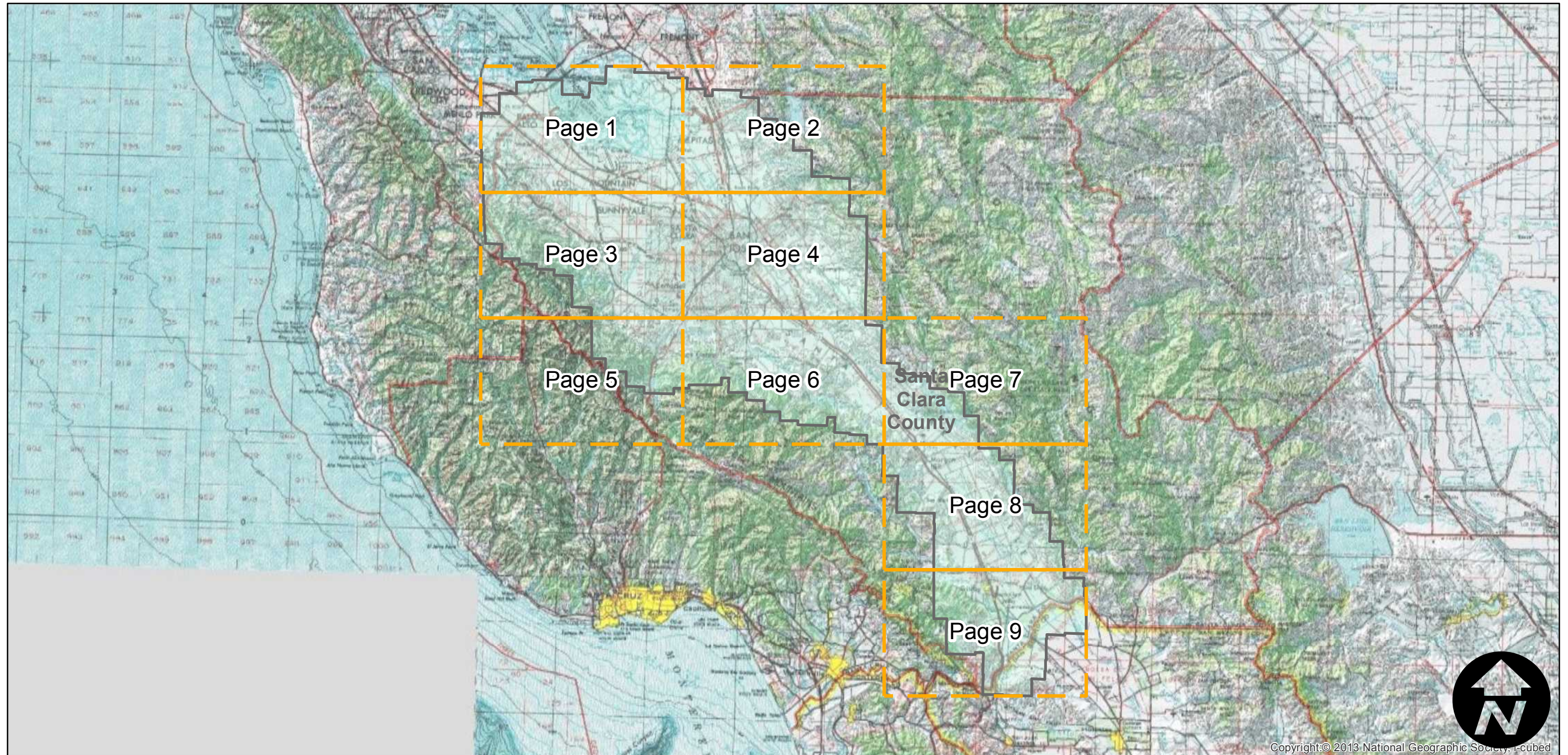
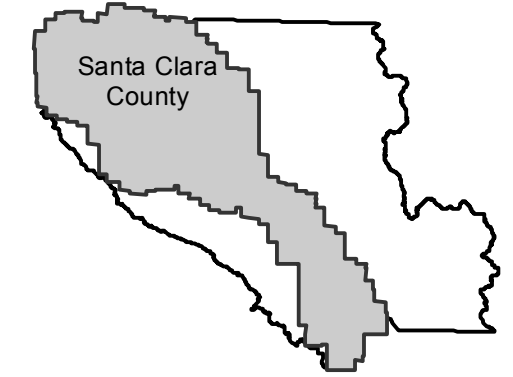


# CAS-2310

Counties: Santa Clara  
Flight date(s): 05-02-1968 to 05-06-1968  
Scale: 1:12,000  
Overlap: 60%

Complete Metadata:  
<http://www.library.ucsb.edu/mil/aerial-photography-tools>

## FLIGHT LOCATION



0 10 20 40 Miles

Index to Aerial Photography  
Page Key

Scale of this index: 1:450,000



Copyright © 2013 National Geographic Society, I-cubed



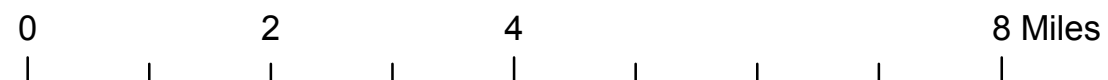
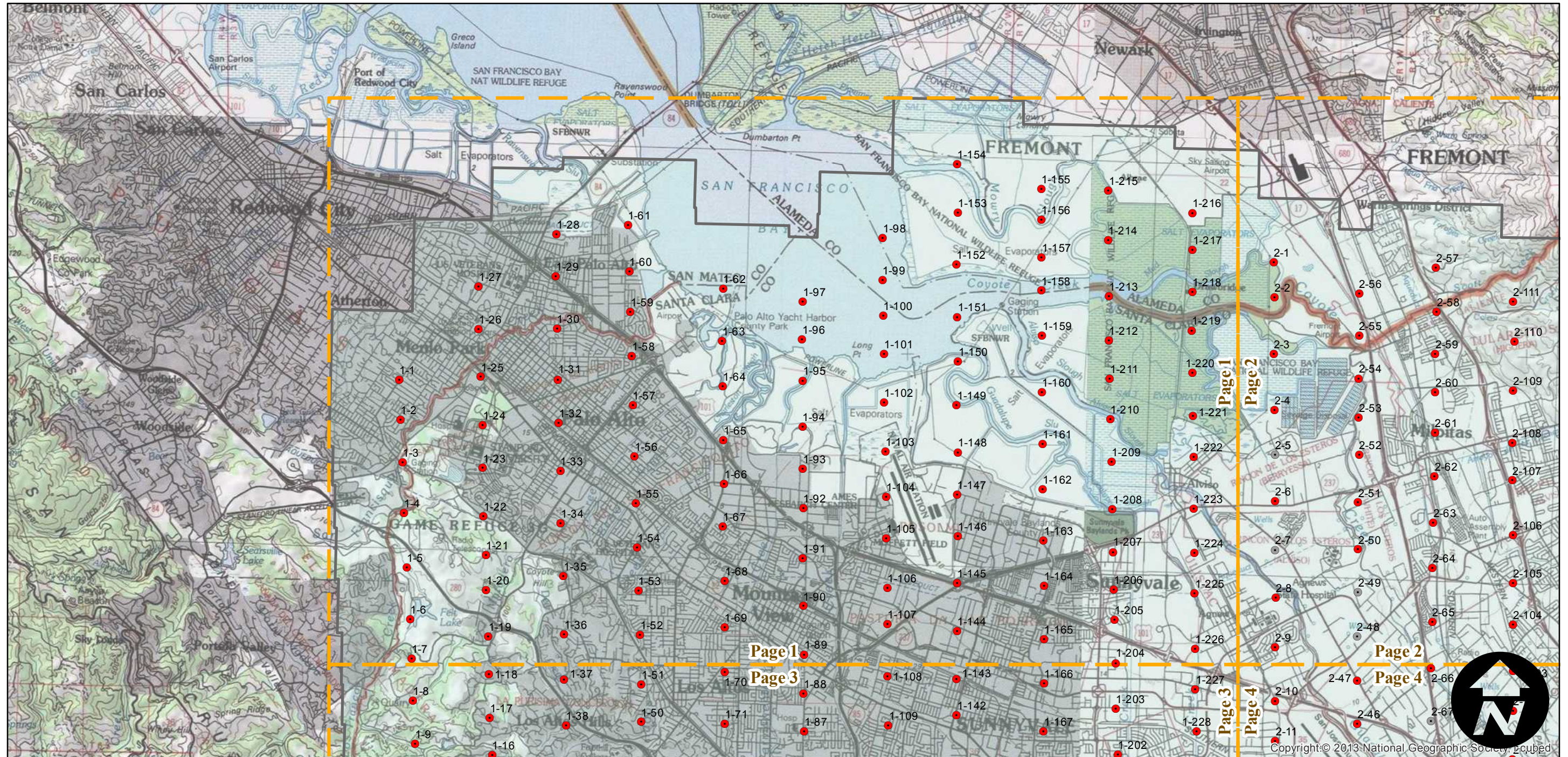
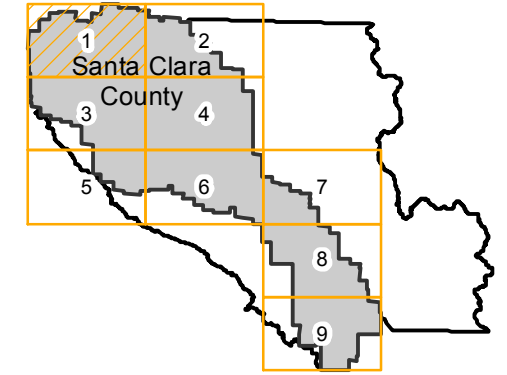
# CAS-2310

Counties: Santa Clara  
Flight date(s): 05-02-1968 to 05-06-1968  
Scale: 1:12,000  
Overlap: 60%

Complete Metadata:  
<http://www.library.ucsb.edu/mil/aerial-photography-tools>

- MIL owns frame
- MIL does not own frame

## FLIGHT LOCATION





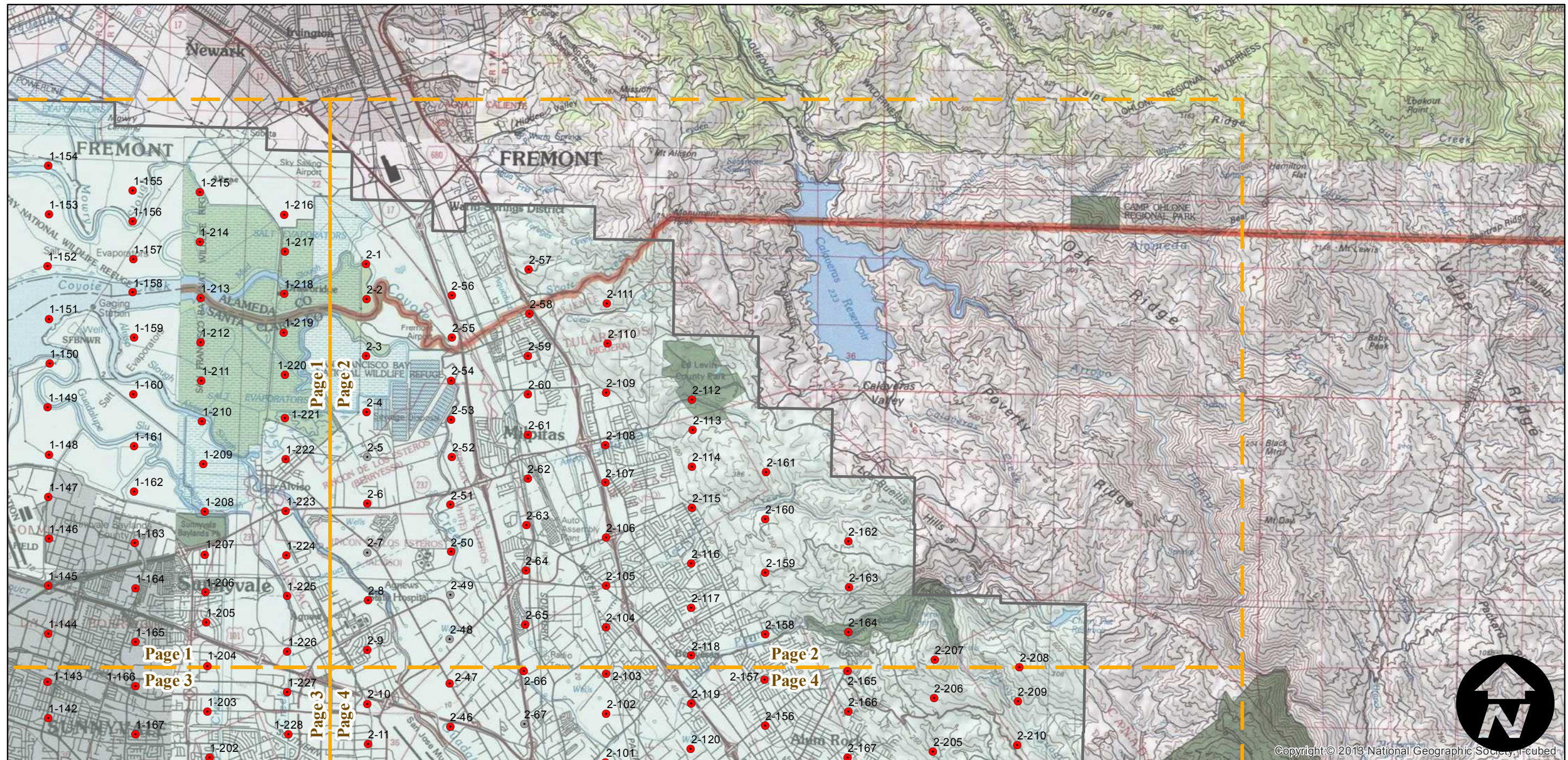
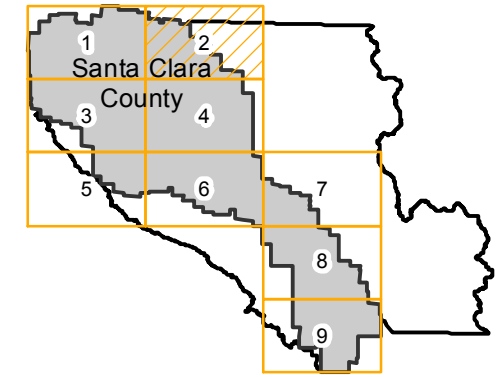
# CAS-2310

Counties: Santa Clara  
Flight date(s): 05-02-1968 to 05-06-1968  
Scale: 1:12,000  
Overlap: 60%

Complete Metadata:  
<http://www.library.ucsb.edu/mil/aerial-photography-tools>

- MIL owns frame
- MIL does not own frame

## FLIGHT LOCATION



0 2 4 8 Miles

Index to Aerial Photography  
Page 2 of 9

Scale of this index: 1:100,000

Copyright © 2013 National Geographic Society, i-cubed



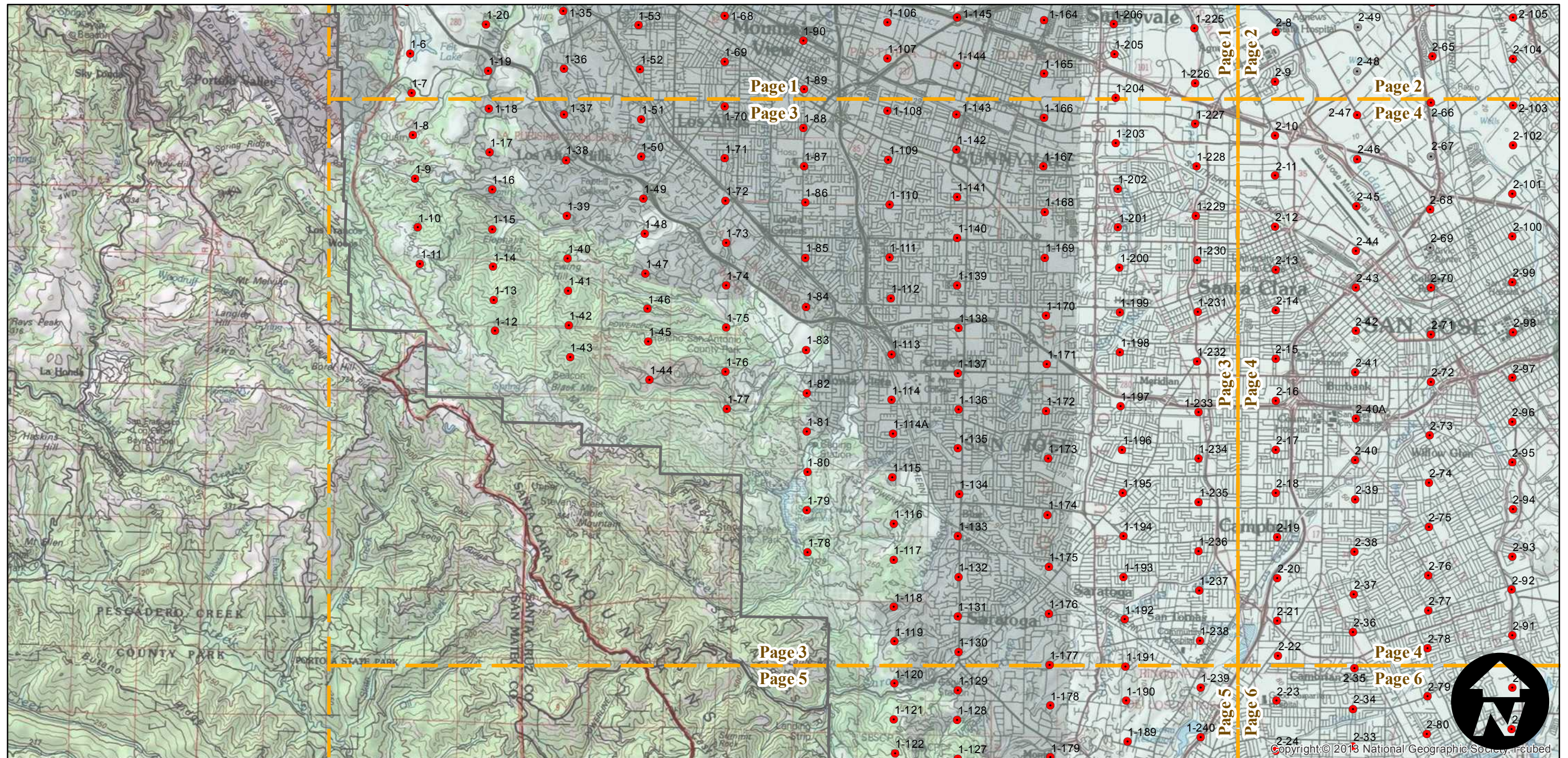
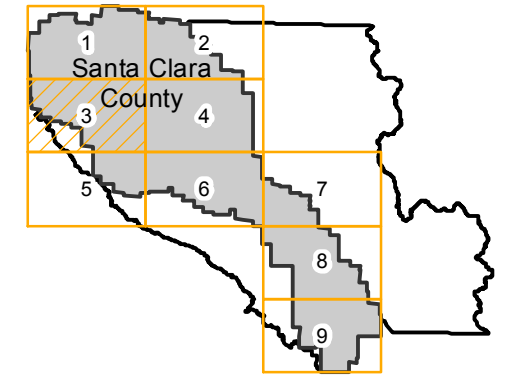
# CAS-2310

Counties: Santa Clara  
Flight date(s): 05-02-1968 to 05-06-1968  
Scale: 1:12,000  
Overlap: 60%

Complete Metadata:  
<http://www.library.ucsb.edu/mil/aerial-photography-tools>

- MIL owns frame
- MIL does not own frame

## FLIGHT LOCATION



0 2 4 8 Miles

Index to Aerial Photography  
Page 3 of 9

Scale of this index: 1:100,000



Copyright © 2013 National Geographic Society, Inc.



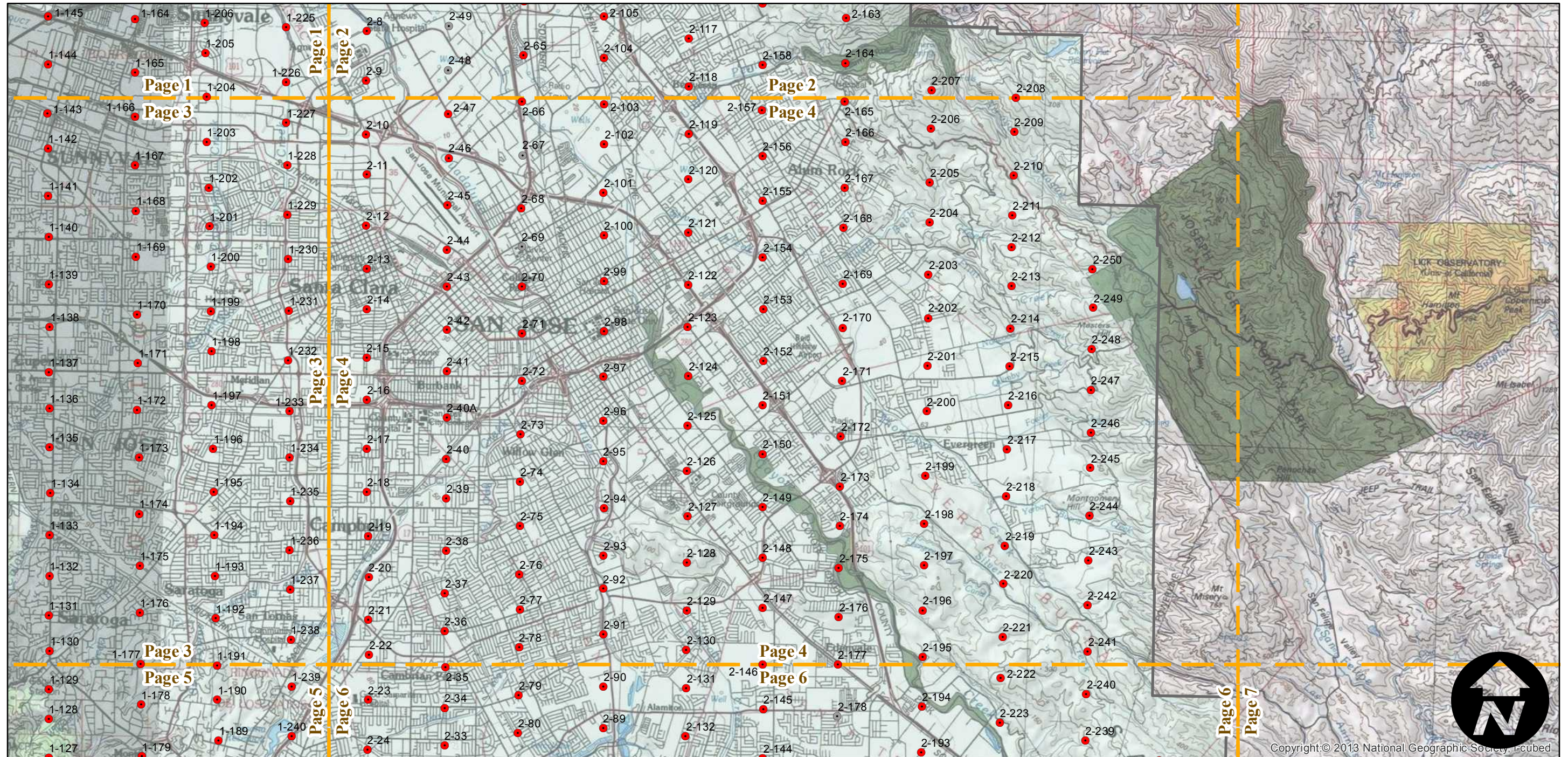
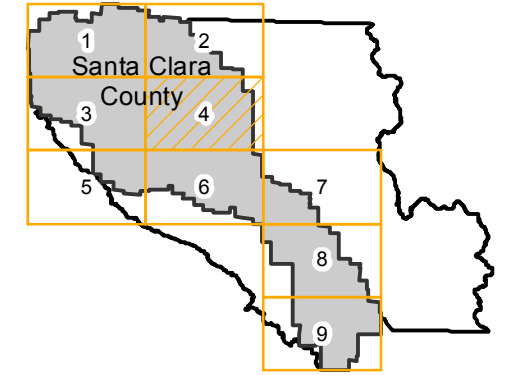
# CAS-2310

Counties: Santa Clara  
Flight date(s): 05-02-1968 to 05-06-1968  
Scale: 1:12,000  
Overlap: 60%

Complete Metadata:  
<http://www.library.ucsb.edu/mil/aerial-photography-tools>

- MIL owns frame
- MIL does not own frame

## FLIGHT LOCATION



Copyright © 2013 National Geographic Society, Inc. Cubed

0 2 4 8 Miles

Index to Aerial Photography  
Page 4 of 9

Scale of this index: 1:100,000

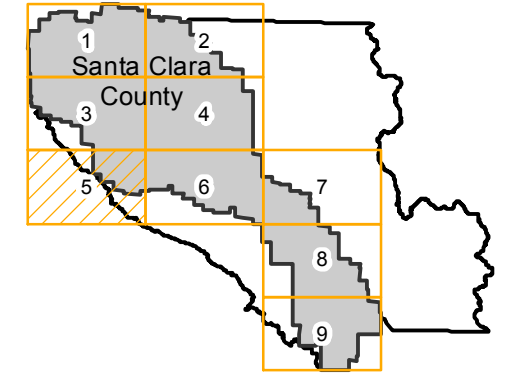


# CAS-2310

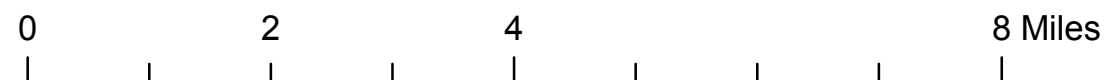
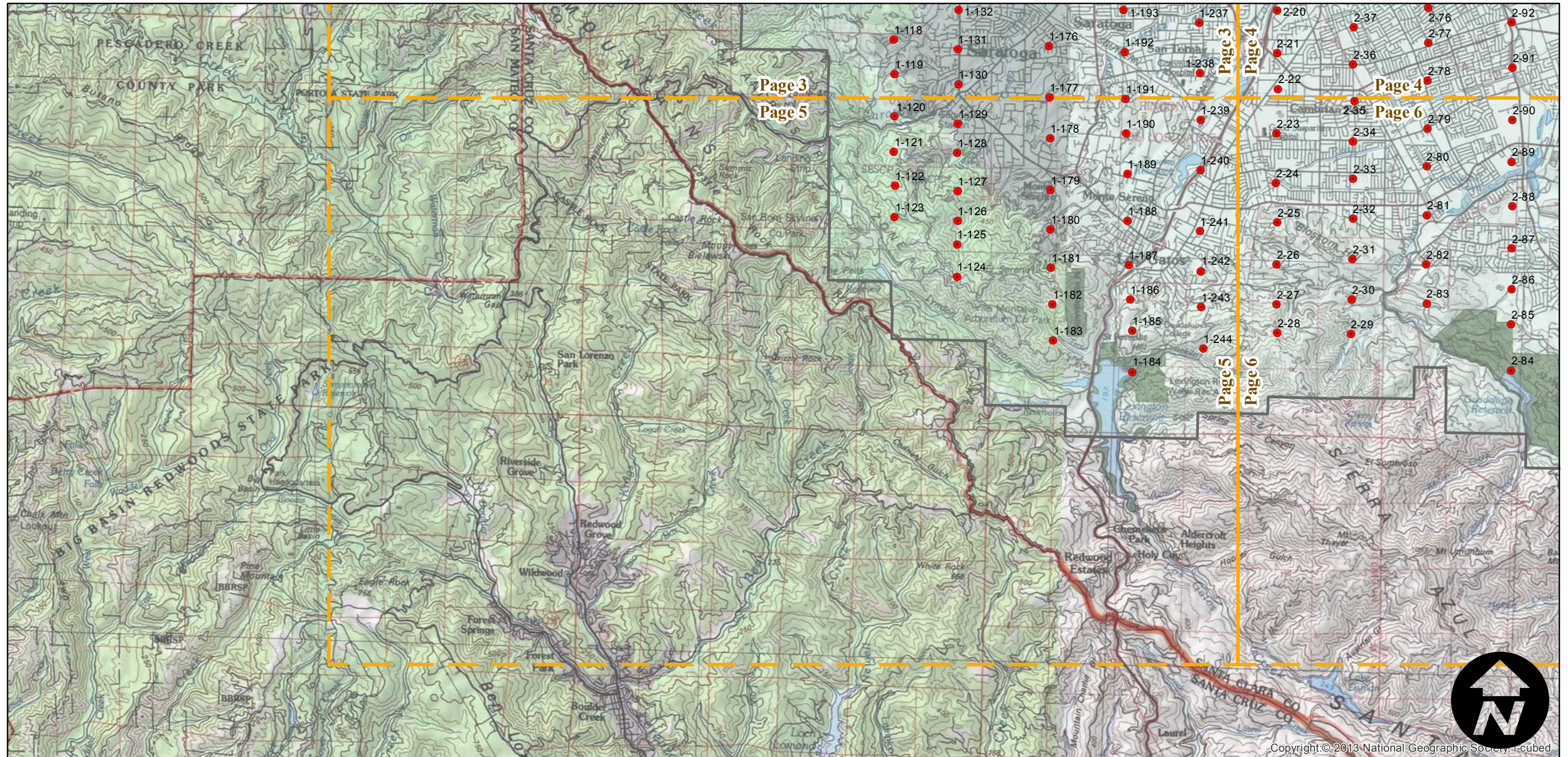
Counties: Santa Clara  
Flight date(s): 05-02-1968 to 05-06-1968  
Scale: 1:12,000  
Overlap: 60%

Complete Metadata:  
<http://www.library.ucsb.edu/mil/aerial-photography-tools>

## FLIGHT LOCATION



- MIL owns frame
- MIL does not own frame



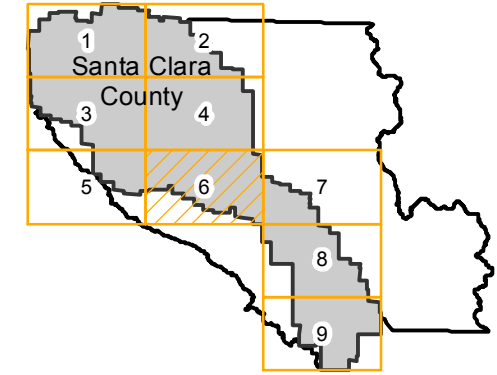


# CAS-2310

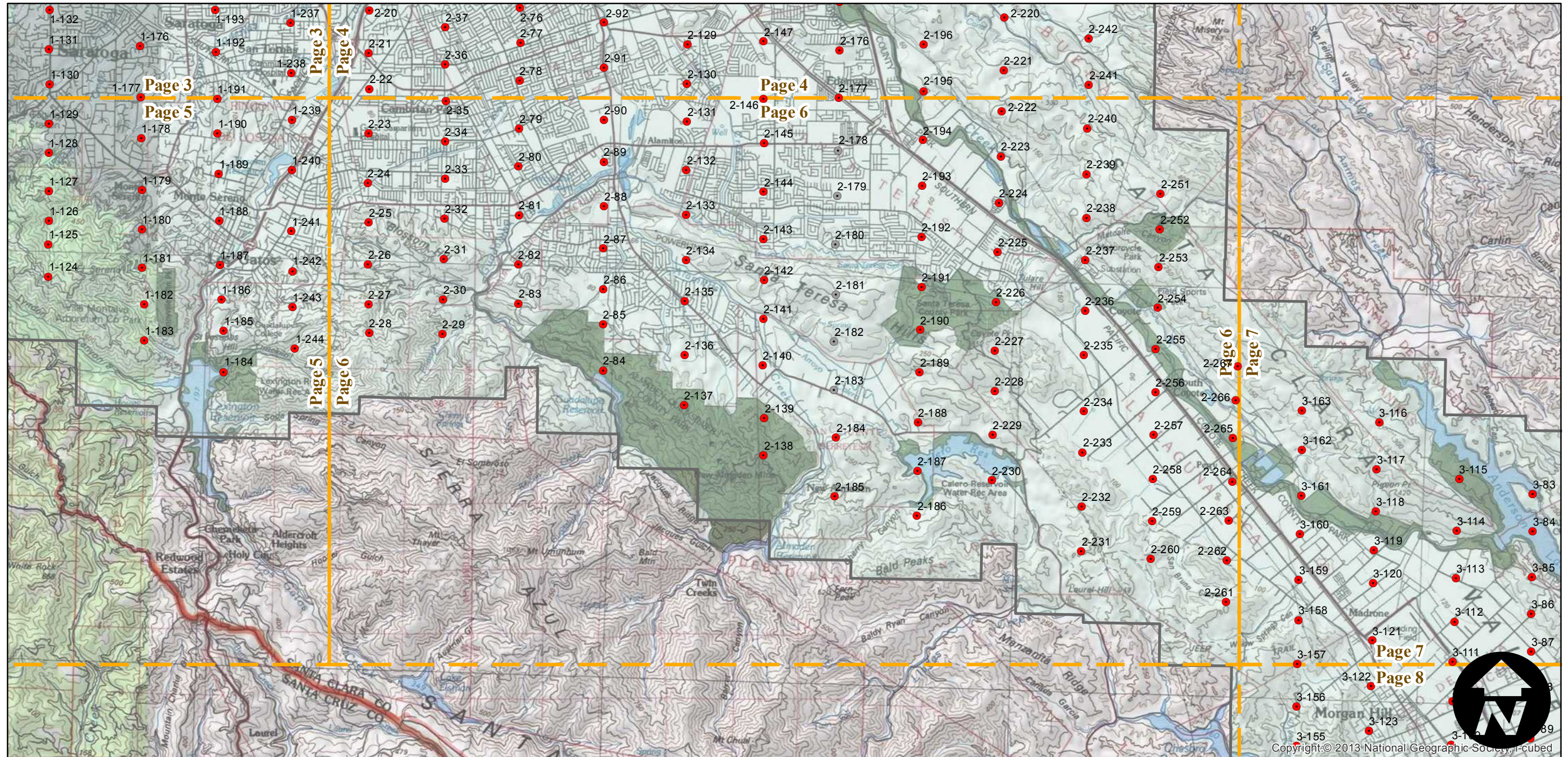
Counties: Santa Clara  
Flight date(s): 05-02-1968 to 05-06-1968  
Scale: 1:12,000  
Overlap: 60%

Complete Metadata:  
<http://www.library.ucsb.edu/mil/aerial-photography-tools>

## FLIGHT LOCATION



- MIL owns frame
- MIL does not own frame



0 2 4 8 Miles

Index to Aerial Photography  
Page 6 of 9

Scale of this index: 1:100,000

Copyright © 2013 National Geographic Society, I-cubed



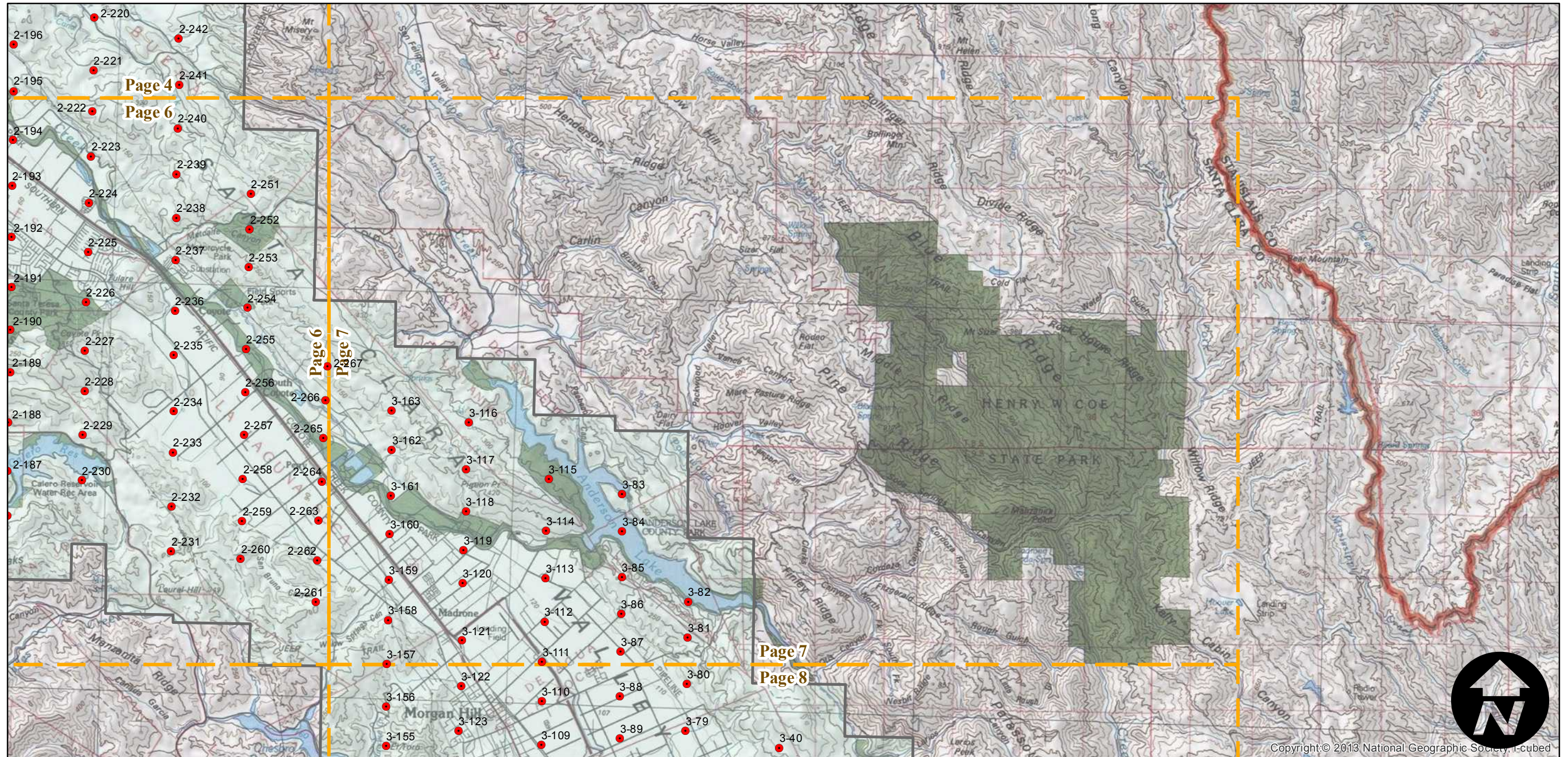
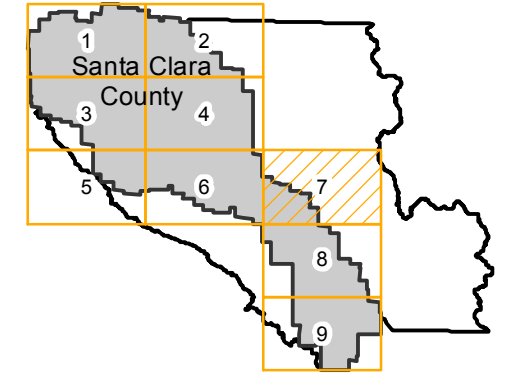
# CAS-2310

Counties: Santa Clara  
Flight date(s): 05-02-1968 to 05-06-1968  
Scale: 1:12,000  
Overlap: 60%

Complete Metadata:  
<http://www.library.ucsb.edu/mil/aerial-photography-tools>

- MIL owns frame
- MIL does not own frame

## FLIGHT LOCATION



Copyright © 2013 National Geographic Society, i-cubed

0 2 4 8 Miles

Index to Aerial Photography  
Page 7 of 9

Scale of this index: 1:100,000

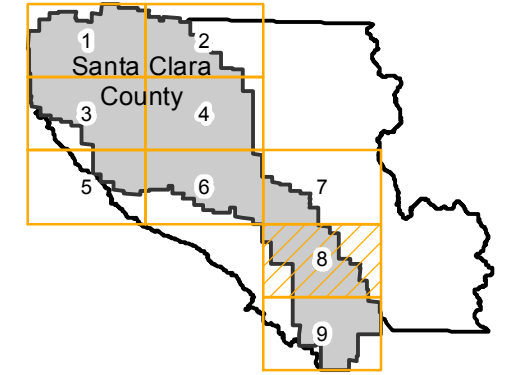


# CAS-2310

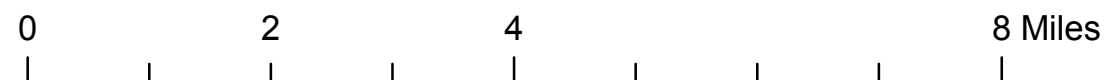
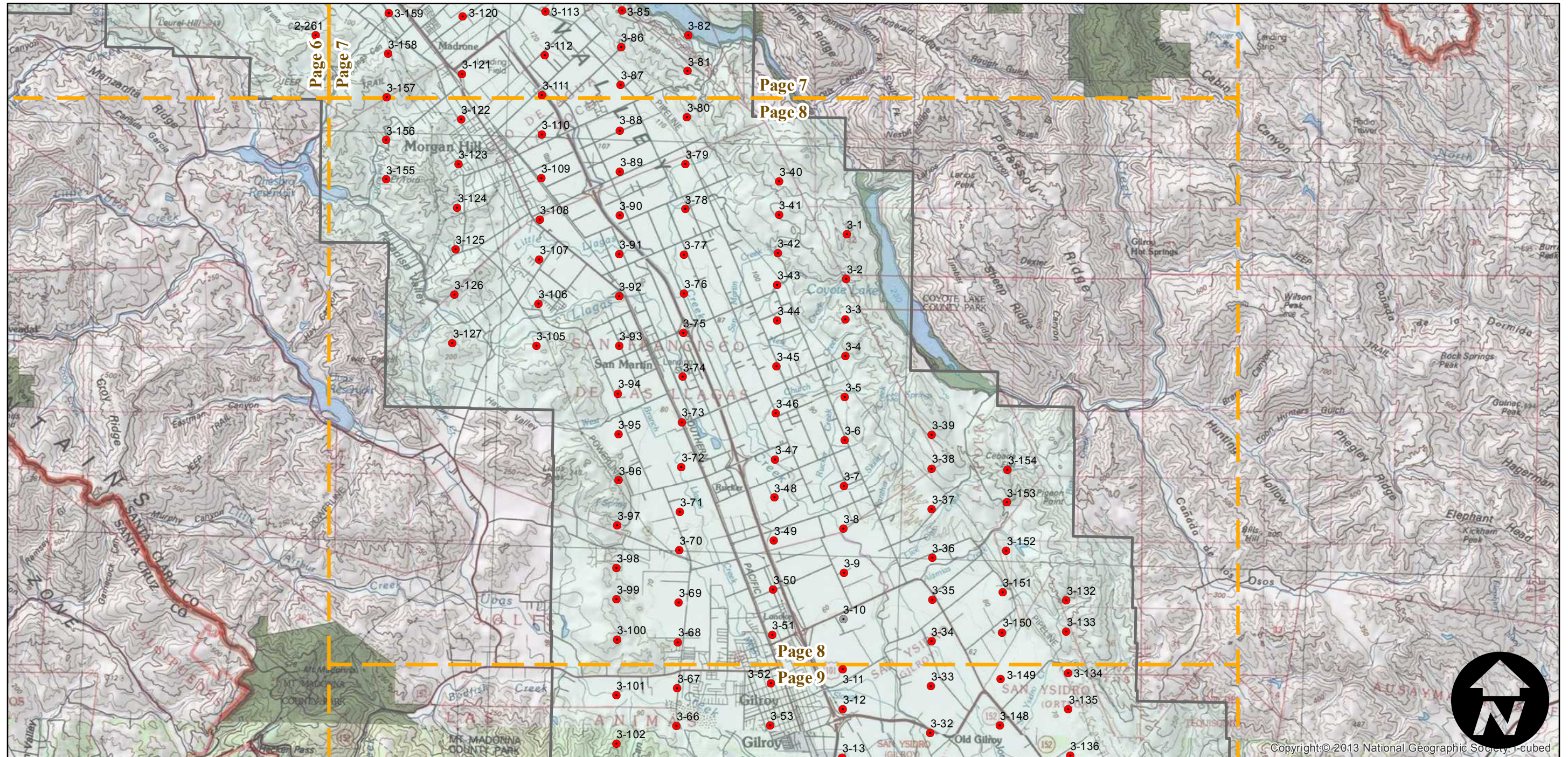
Counties: Santa Clara  
Flight date(s): 05-02-1968 to 05-06-1968  
Scale: 1:12,000  
Overlap: 60%

Complete Metadata:  
<http://www.library.ucsb.edu/mil/aerial-photography-tools>

## FLIGHT LOCATION



- MIL owns frame
- MIL does not own frame





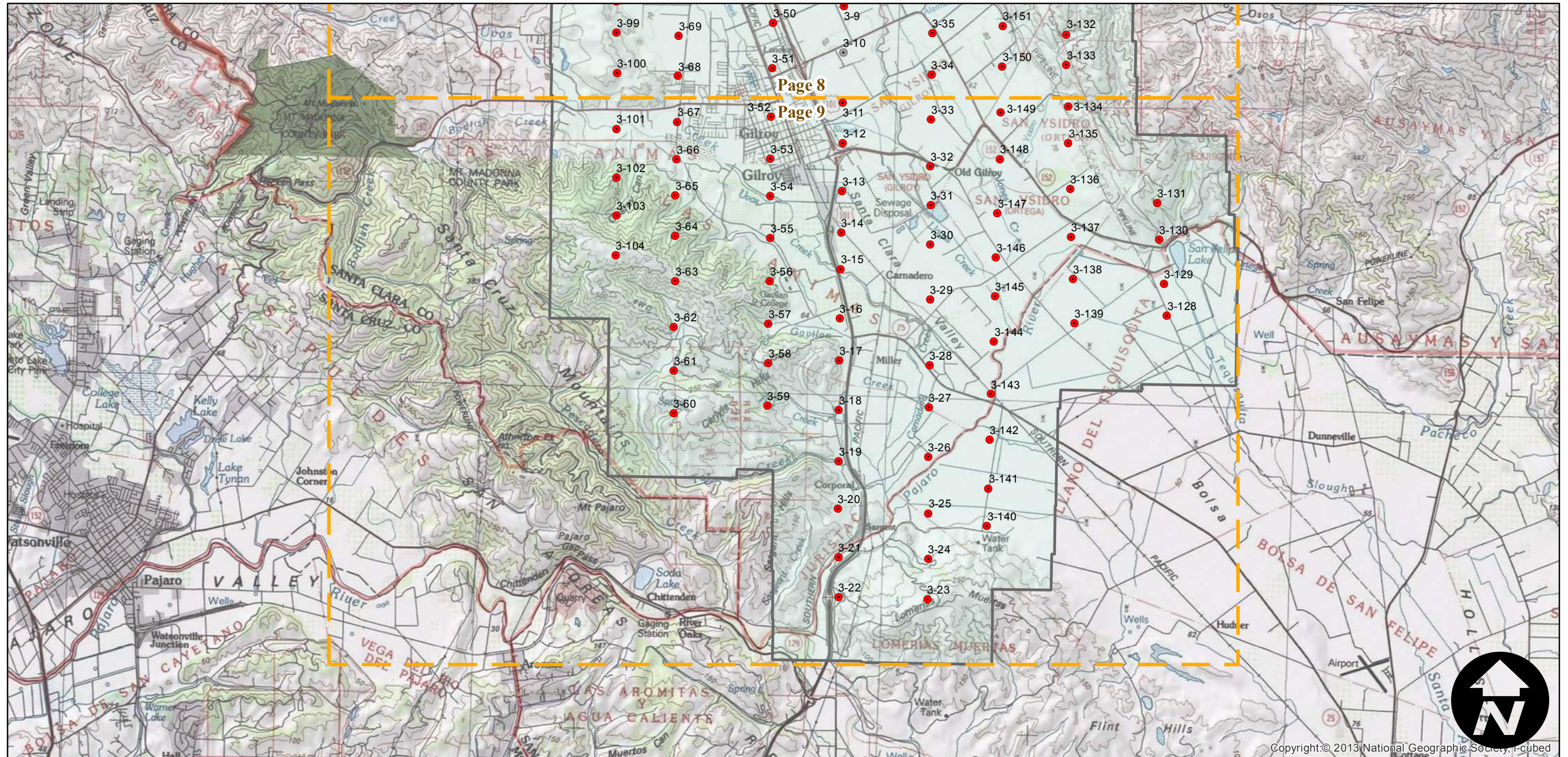
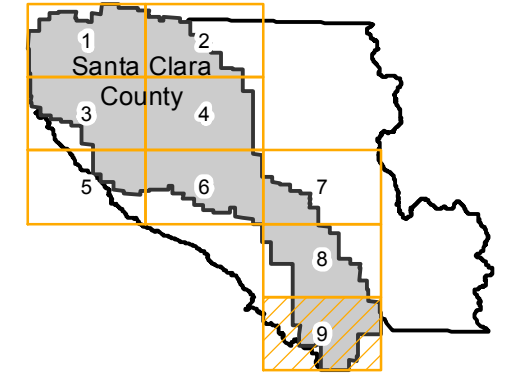
# CAS-2310

Counties: Santa Clara  
Flight date(s): 05-02-1968 to 05-06-1968  
Scale: 1:12,000  
Overlap: 60%

Complete Metadata:  
<http://www.library.ucsb.edu/mil/aerial-photography-tools>

- MIL owns frame
- MIL does not own frame

## FLIGHT LOCATION



Copyright © 2013 National Geographic Society, I-cubed

