

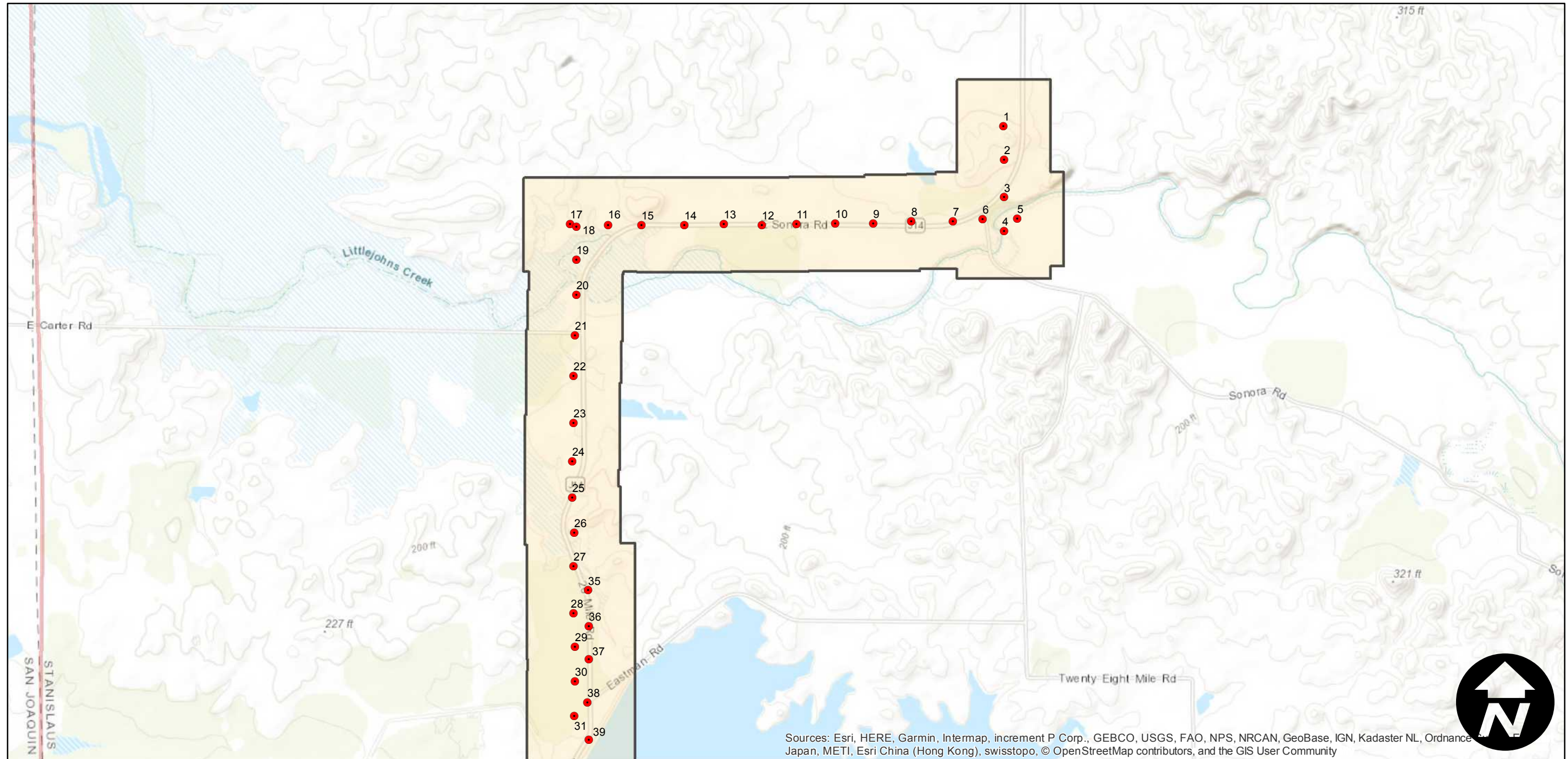
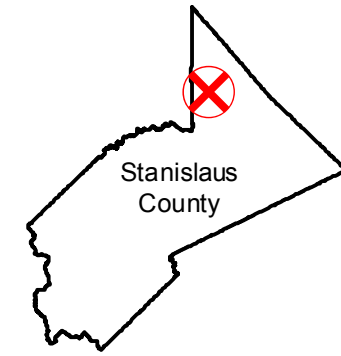
CAS-2026

Counties: Stanislaus
Flight date(s): 02-27-1967
Scale: 1:3,000
Overlap: 60%

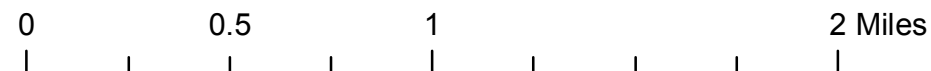
Complete Metadata:
<https://www.library.ucsb.edu/src/airphotos/aerial-photography-information>

Note: Oakdale; East Sonora Road and Twenty Six Mile Road, from Milton Road to Lon Dale Road. Near Woodward Reservoir. Imagery acquired October 2009.

FLIGHT LOCATION



Sources: Esri, HERE, Garmin, Intermap, increment P Corp., GEBCO, USGS, FAO, NPS, NRCAN, GeoBase, IGN, Kadaster NL, Ordnance Survey, Esri Japan, METI, Esri China (Hong Kong), swisstopo, © OpenStreetMap contributors, and the GIS User Community

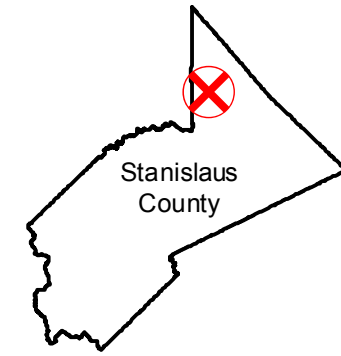


CAS-2026

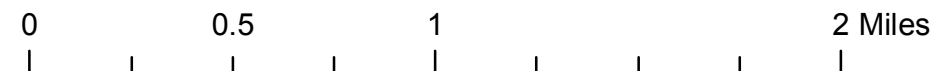
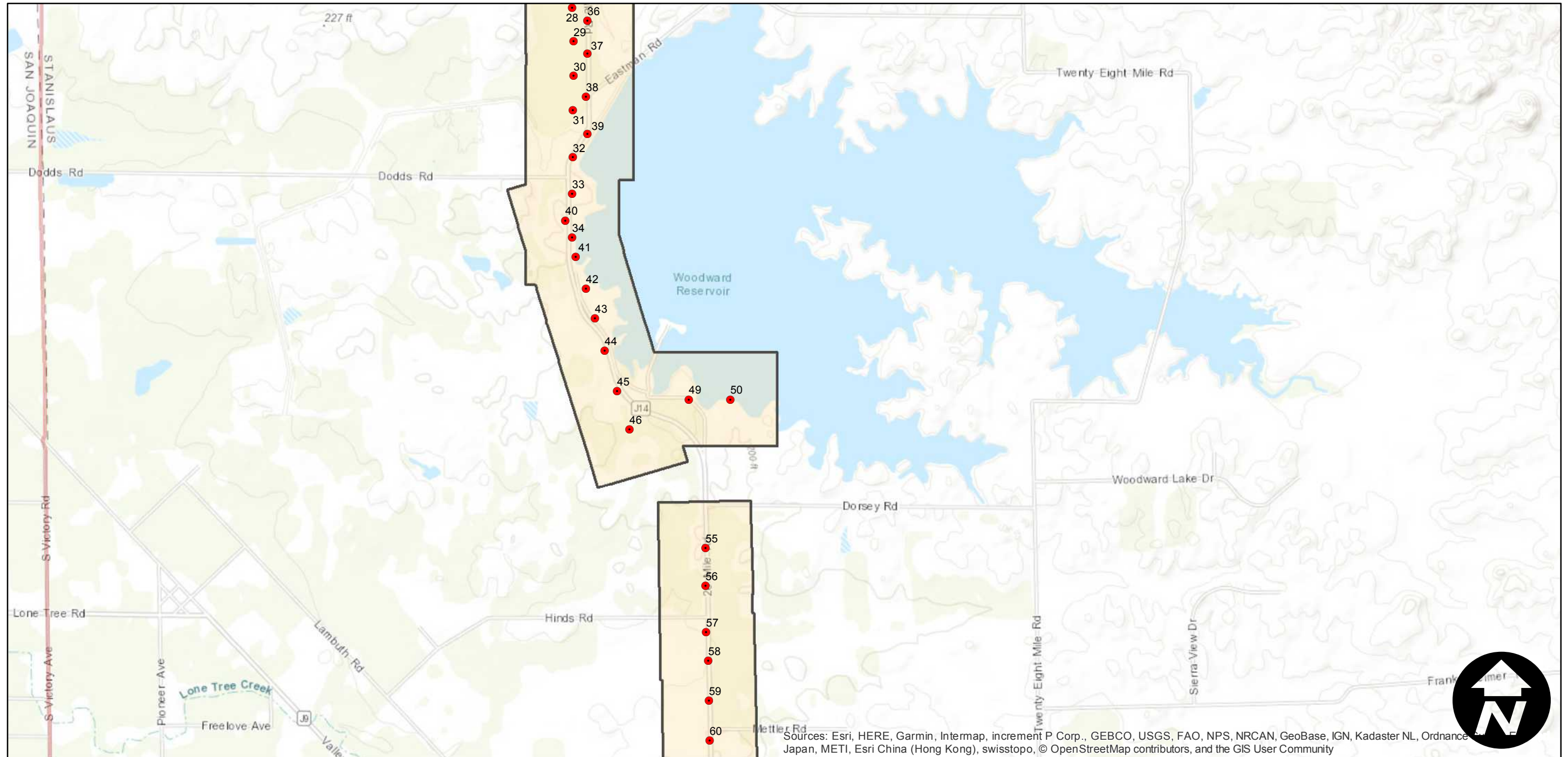
Counties: Stanislaus
Flight date(s): 02-27-1967
Scale: 1:3,000
Overlap: 60%

Note: Oakdale; East Sonora Road and Twenty Six Mile Road, from Milton Road to Lon Dale Road. Near Woodward Reservoir. Imagery acquired October 2009.

FLIGHT LOCATION



Complete Metadata:
<https://www.library.ucsb.edu/src/airphotos/aerial-photography-information>



Sources: Esri, HERE, Garmin, Intermap, increment P Corp., GEBCO, USGS, FAO, NPS, NRCAN, GeoBase, IGN, Kadaster NL, Ordnance Survey, Esri Japan, METI, Esri China (Hong Kong), swisstopo, © OpenStreetMap contributors, and the GIS User Community

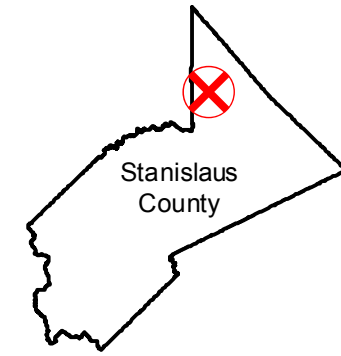


CAS-2026

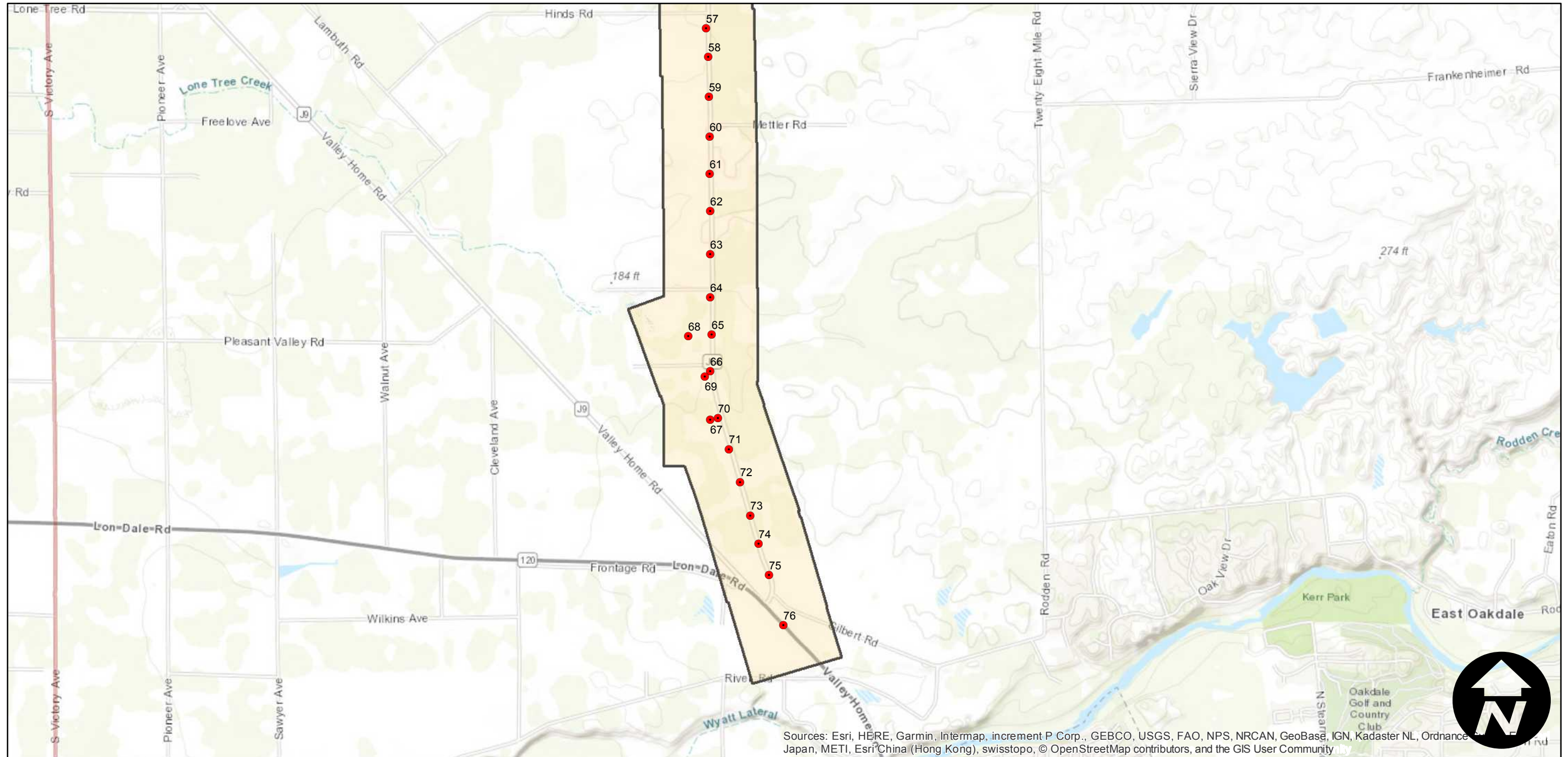
Counties: Stanislaus
Flight date(s): 02-27-1967
Scale: 1:3,000
Overlap: 60%

Note: Oakdale; East Sonora Road and Twenty Six Mile Road, from Milton Road to Lon Dale Road. Near Woodward Reservoir. Imagery acquired October 2009.

FLIGHT LOCATION



Complete Metadata:
<https://www.library.ucsb.edu/src/airphotos/aerial-photography-information>



Sources: Esri, HERE, Garmin, Intermap, increment P Corp., GEBCO, USGS, FAO, NPS, NRCAN, GeoBase, IGN, Kadaster NL, Ordnance Survey, Esri Japan, METI, Esri China (Hong Kong), swisstopo, © OpenStreetMap contributors, and the GIS User Community

0 0.5 1 2 Miles

Index to Aerial Photography
Page 3 of 3

Scale of this index: 1:30,000

