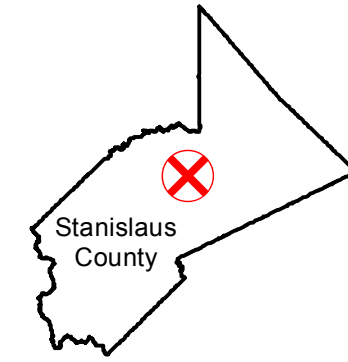


# CAS-1583

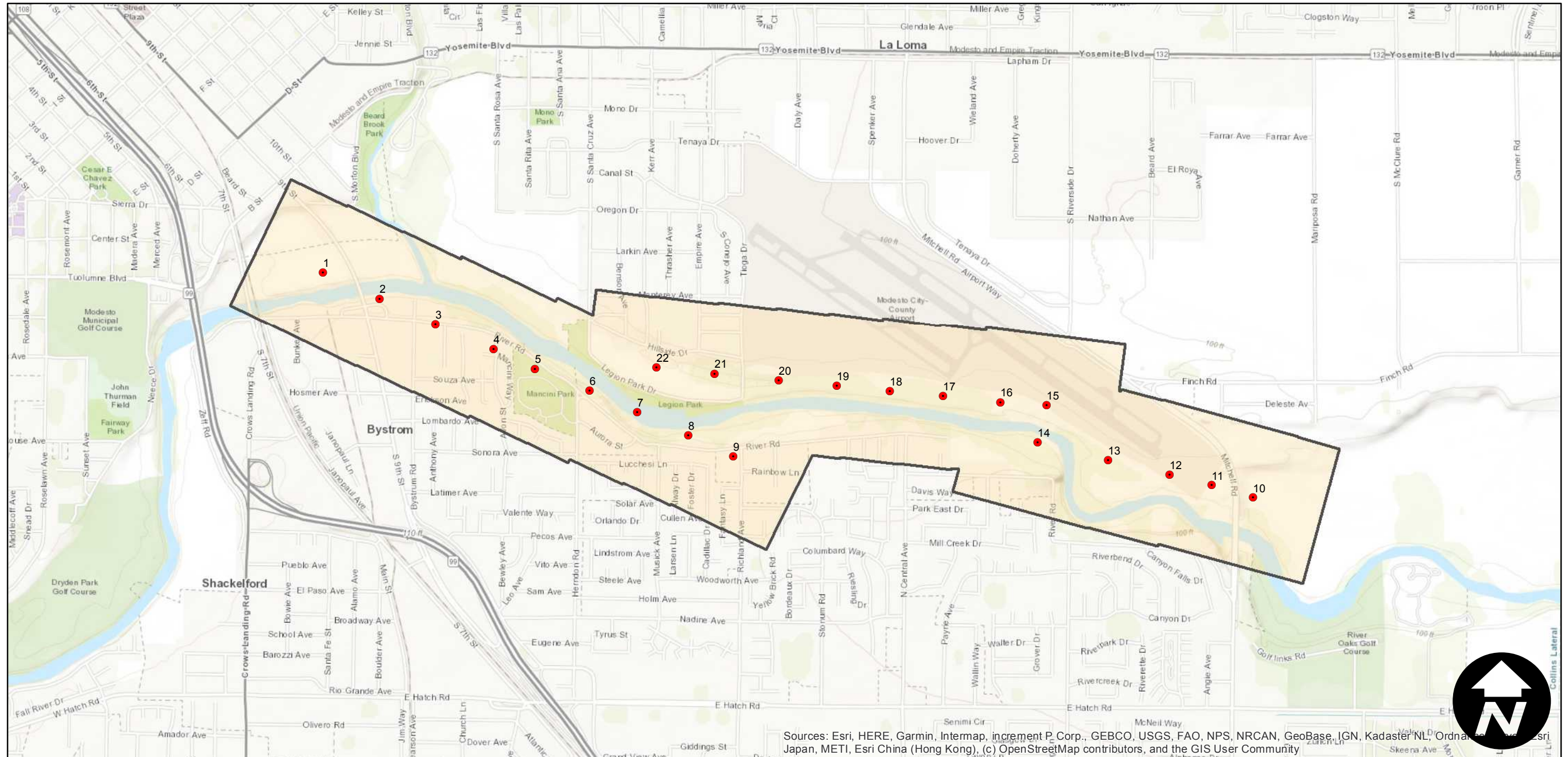
Counties: Stanislaus  
Flight date(s): 08-18-1965  
Scale: 1:3,000  
Overlap: 60%

Note: Tuolumne River, vicinity of Modesto Airport. Imagery acquired October 2009.

## FLIGHT LOCATION



Complete Metadata:  
<https://www.library.ucsb.edu/src/airphotos/aerial-photography-information>



Sources: Esri, HERE, Garmin, Intermap, increment P Corp., GEBCO, USGS, FAO, NPS, NRCAN, GeoBase, IGN, Kadaster NL, Ordnance Survey, Esri Japan, METI, Esri China (Hong Kong), (c) OpenStreetMap contributors, and the GIS User Community

