

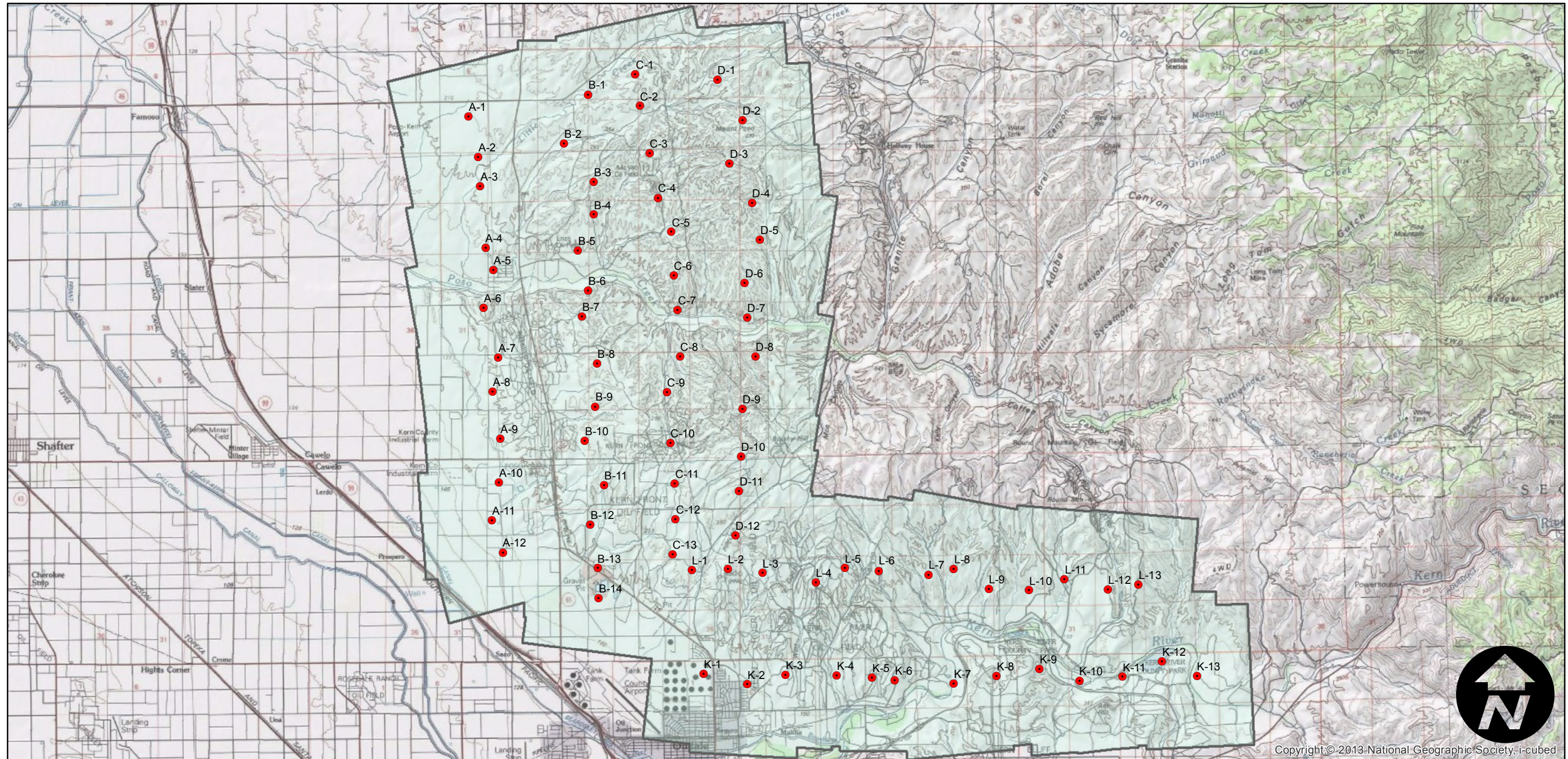
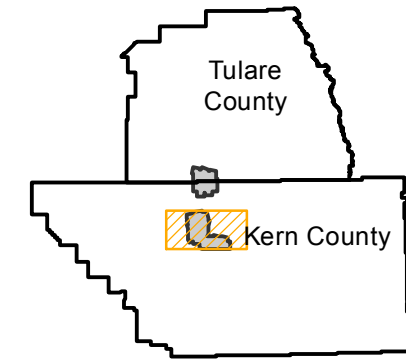
C-90

Counties: Kern, Tulare
Flight date(s): 07-01-1927 to 7-31-1927
Scale: 1:18,000
Overlap: 60%

Complete Metadata:
<http://www.library.ucsb.edu/mil/aerial-photography-tools>

Note: Area between Kern River and Pozo Creek (north of Oildale). Acquired from Whittier College, January 2013.

FLIGHT LOCATION



Copyright © 2013 National Geographic Society, i-cubed

0 1.25 2.5 5 Miles

Index to Aerial Photography
Page 1 of 2

Scale of this index: 1:130,000

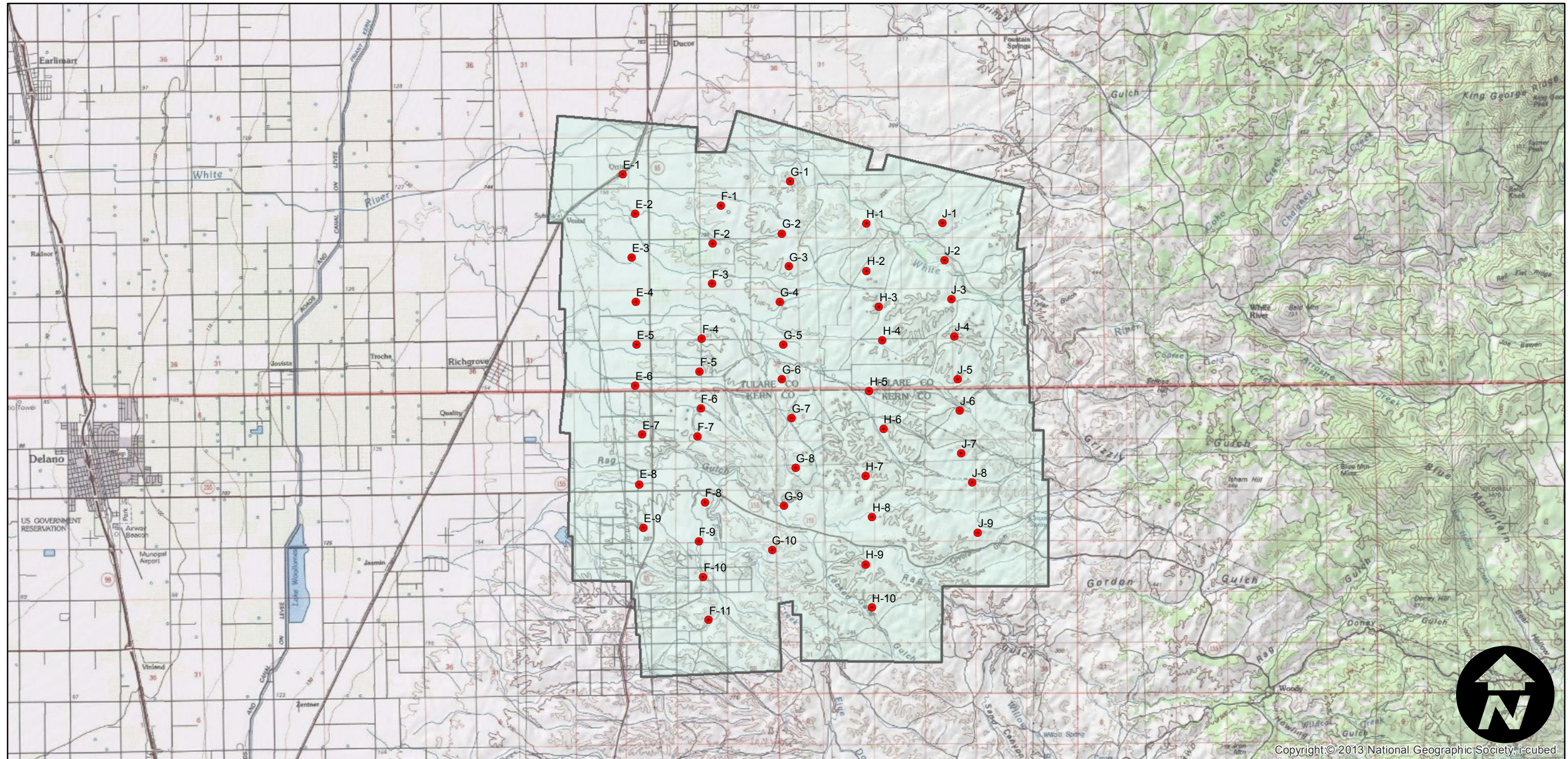
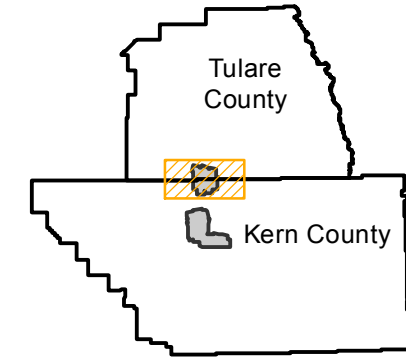
C-90

Counties: Kern, Tulare
Flight date(s): 07-01-1927 to 7-31-1927
Scale: 1:18,000
Overlap: 60%

Complete Metadata:
<http://www.library.ucsb.edu/mil/aerial-photography-tools>

Note: Area between Kern River and Pozo Creek (north of Oildale). Acquired from Whittier College, January 2013.

FLIGHT LOCATION



0 1.25 2.5 5 Miles