

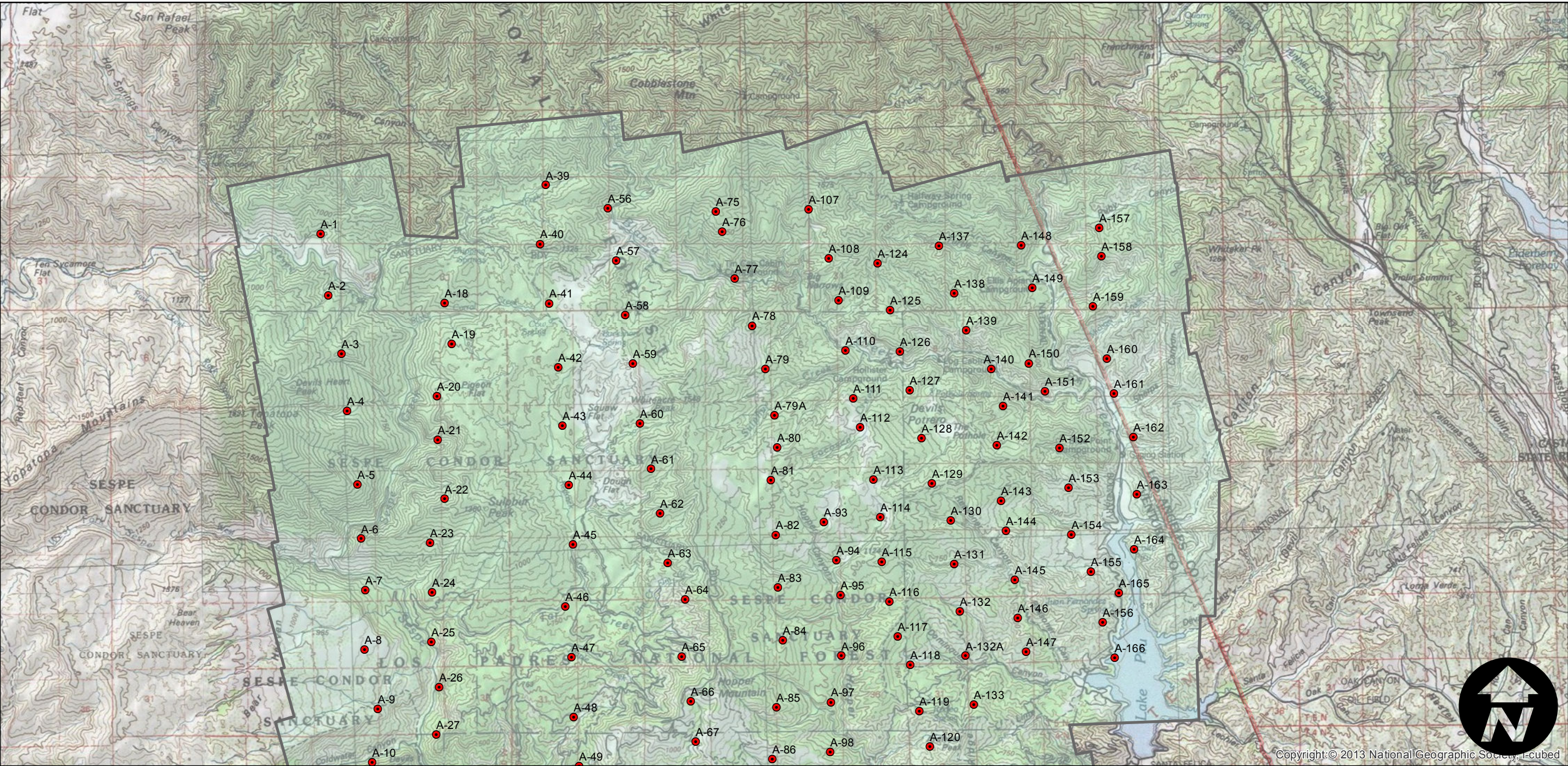
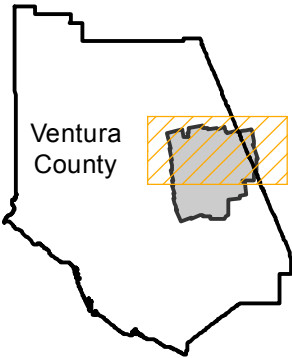
C-870

Counties: Ventura
Flight date(s): 01-01-1930 to 12-31-1930
Scale: 1: 18,000
Overlap: 60%

Complete Metadata:
<http://www.library.ucsb.edu/mil/aerial-photography-tools>

Note: Vicinity of Fillmore and Piru. Check reverse side of paper prints for scale. Part of flight derived from C-474 (1929). Section of flight derived from flight C-45 made into flight C-45C. Prints and nitrate negatives acquired from Whittier College, January 2013.

FLIGHT LOCATION



0 2 4 8 Miles

Index to Aerial Photography
Page 1 of 2

Scale of this index: 1:100,000

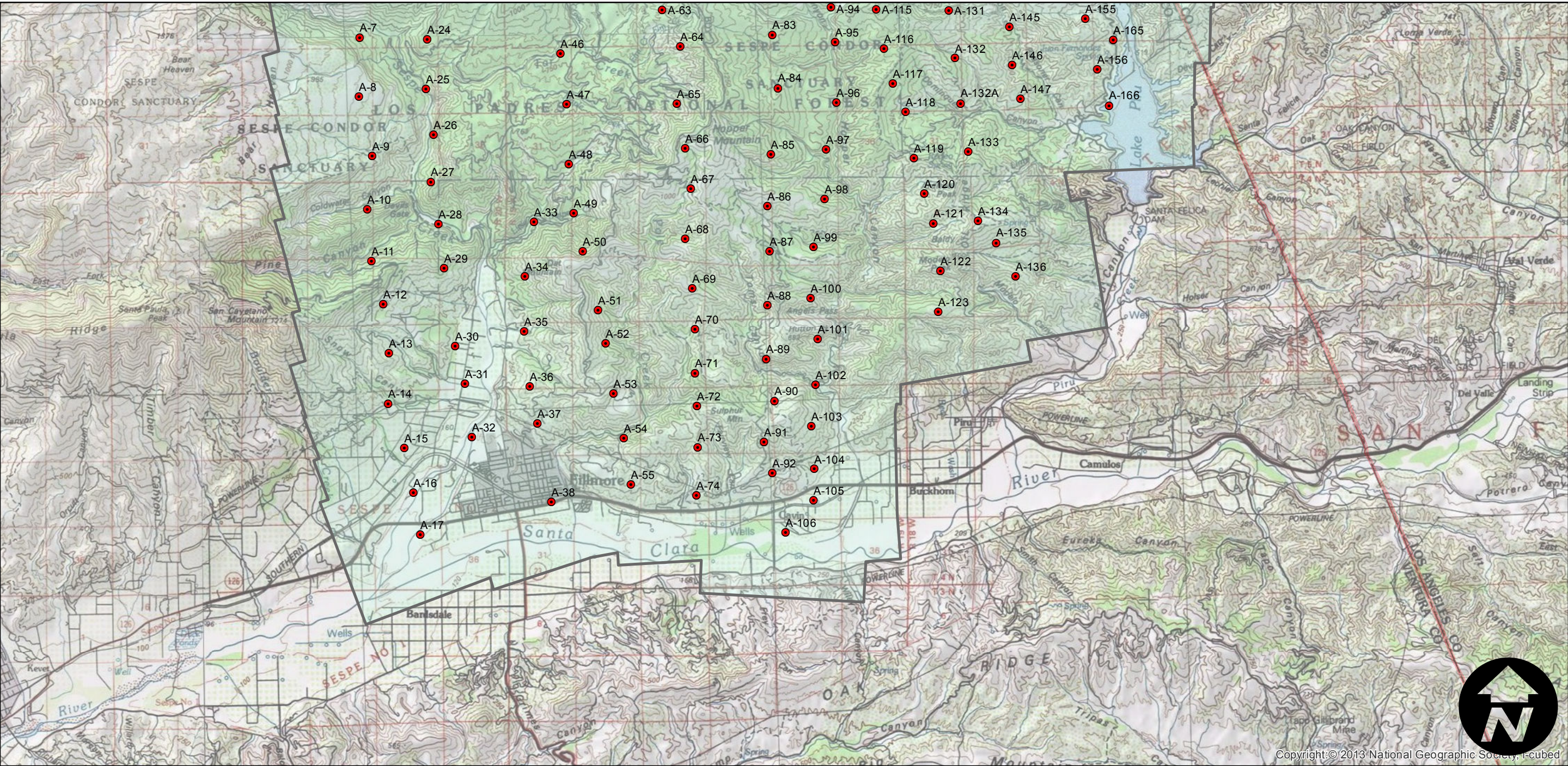
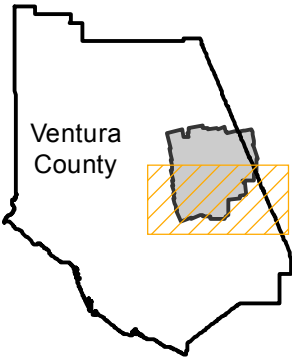
C-870

Counties: Ventura
Flight date(s): 01-01-1930 to 12-31-1930
Scale: 1: 18,000
Overlap: 60%

Complete Metadata:
<http://www.library.ucsb.edu/mil/aerial-photography-tools>

Note: Vicinity of Fillmore and Piru. Check reverse side of paper prints for scale. Part of flight derived from C-474 (1929). Section of flight derived from flight C-45 made into flight C-45C. Prints and nitrate negatives acquired from Whittier College, January 2013.

FLIGHT LOCATION



0 2 4 8 Miles

Index to Aerial Photography
Page 2 of 2

Scale of this index: 1:100,000