

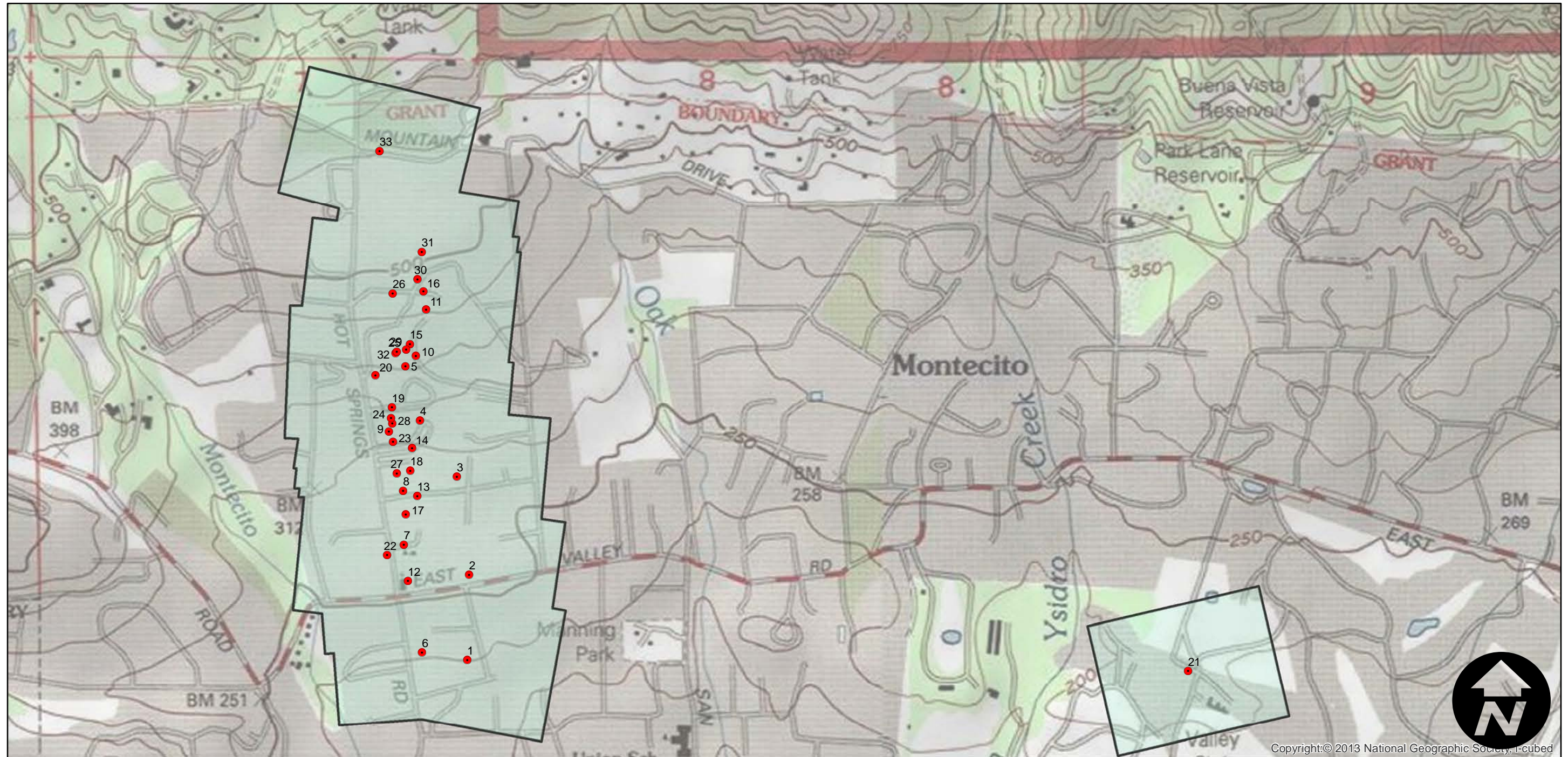
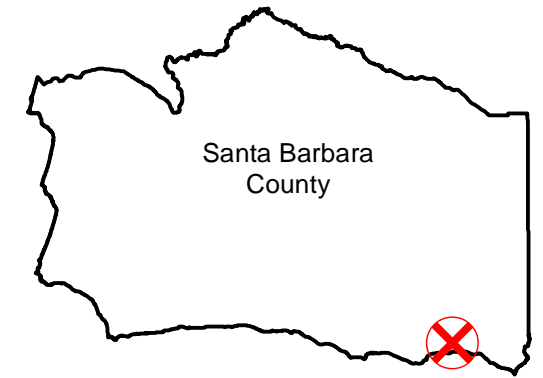
# C-816

Counties: Santa Barbara  
Flight date(s): 01-01-1930 to 12-31-1930  
Scale: 1:2,400  
Overlap: 60%

Complete Metadata:  
<http://www.library.ucsb.edu/mil/aerial-photography-tools>

Note: Montecito: Hot Springs Road from Pepper Tree Lane to Riven Rock Road. Overlap within flightlines is not consistent. Copy negatives were made from original nitrate film. Imagery acquired from Teledyne, Inc., 1986 and Whittier College, January 2013. Nitrate negatives scanned, 2015.

## FLIGHT LOCATION



Copyright:© 2013 National Geographic Society, I-cubed

0 0.125 0.25 0.5 Miles

Scale of this index: 1:12,000

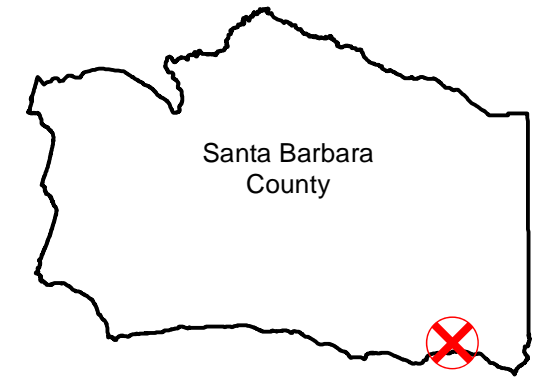
# C-816

Counties: Santa Barbara  
Flight date(s): 01-01-1930 to 12-31-1930  
Scale: 1:2,400  
Overlap: 60%

Complete Metadata:  
<http://www.library.ucsb.edu/mil/aerial-photography-tools>

Note: Montecito: Hot Springs Road from Pepper Tree Lane to Riven Rock Road. Overlap within flightlines is not consistent. Copy negatives were made from original nitrate film. Imagery acquired from Teledyne, Inc., 1986 and Whittier College, January 2013. Nitrate negatives scanned, 2015.

## FLIGHT LOCATION



0 0.125 0.25 0.5 Miles

