

C-7444

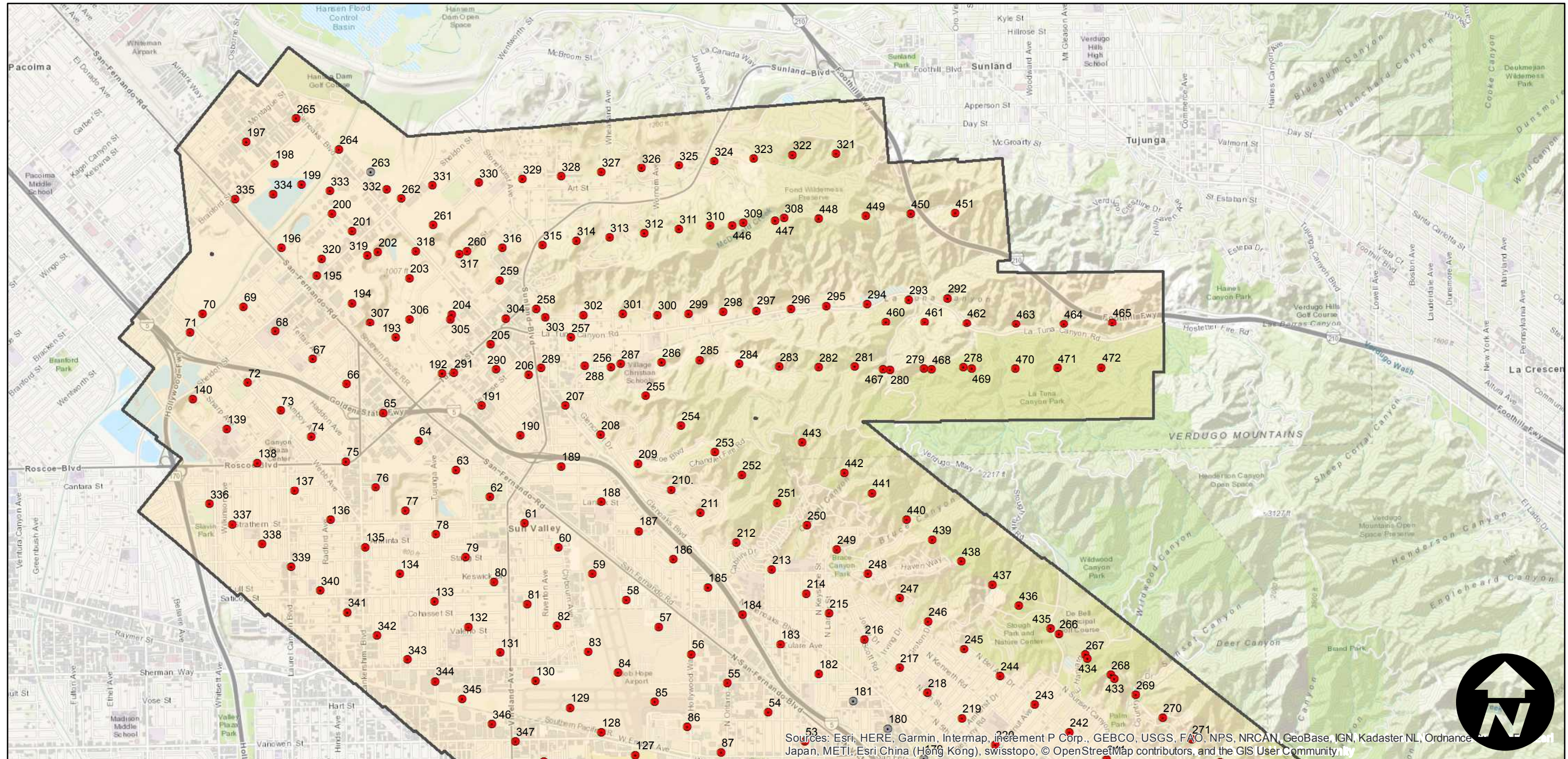
Counties: Los Angeles
Flight date(s): 09-25-1941 to 10-31-1941
Scale: 1:4,800
Overlap: 50-80%

Complete Metadata:
<https://www.library.ucsb.edu/src/airphotos/aerial-photography-information>

Note: Sun Valley and La Tuna Canyon to Burbank. Imagery acquired from Teledyne, Inc., 1986 and from Whittier College, January 2013.

- MIL owns frame
- MIL does not own frame

FLIGHT LOCATION



Sources: Esri, HERE, Garmin, Intermap, increment P Corp., GEBCO, USGS, FAO, NPS, NRCAN, GeoBase, IGN, Kadaster NL, Ordnance Survey, Esri, China (Hong Kong), swisstopo, © OpenStreetMap contributors, and the GIS User Community

0 0.5 1 2 Miles

Index to Aerial Photography
Page 1 of 2

Scale of this index: 1:45,000

C-7444

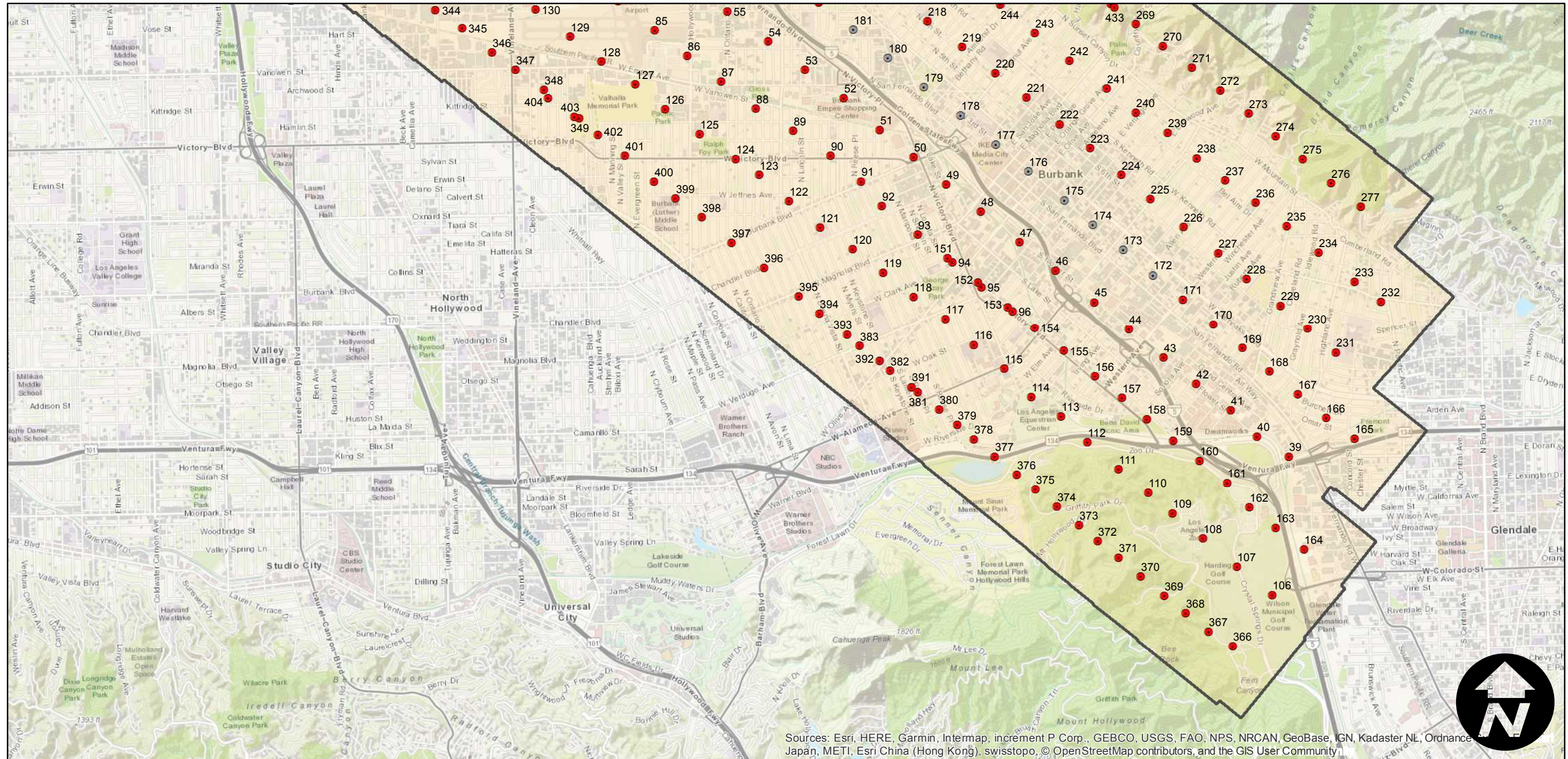
Counties: Los Angeles
Flight date(s): 09-25-1941 to 10-31-1941
Scale: 1:4,800
Overlap: 50-80%

Complete Metadata:
<https://www.library.ucsb.edu/src/airphotos/aerial-photography-information>

Note: Sun Valley and La Tuna Canyon to Burbank. Imagery acquired from Teledyne, Inc., 1986 and from Whittier College, January 2013.

- MIL owns frame
- MIL does not own frame

FLIGHT LOCATION



Sources: Esri, HERE, Garmin, Intermap, increment P Corp., GEBCO, USGS, FAO, NPS, NRCAN, GeoBase, IGN, Kadaster NL, Ordnance Survey, Esri China (Hong Kong), Swisstopo, © OpenStreetMap contributors, and the GIS User Community

0 0.5 1 2 Miles

Scale of this index: 1:45,000