

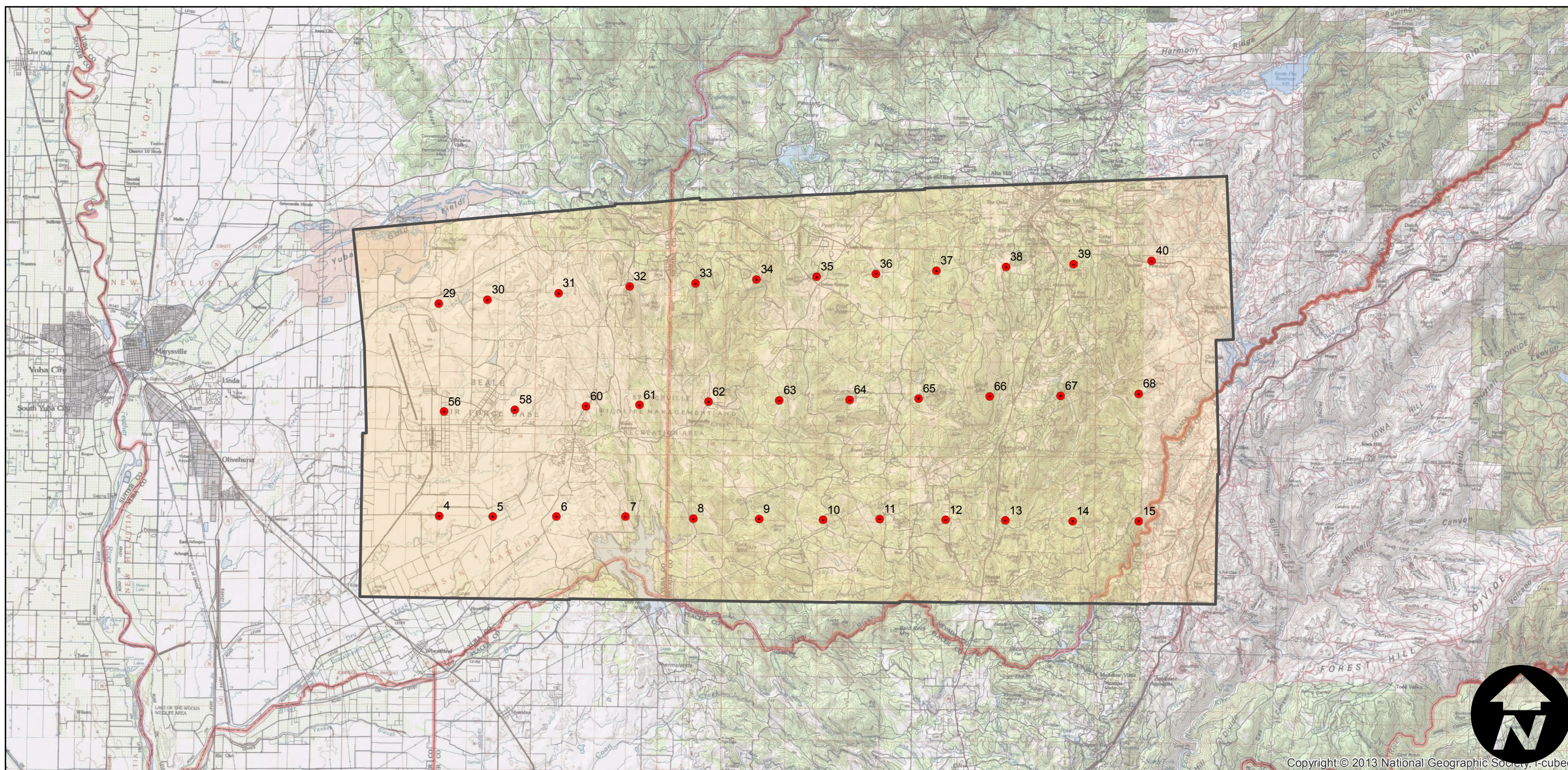
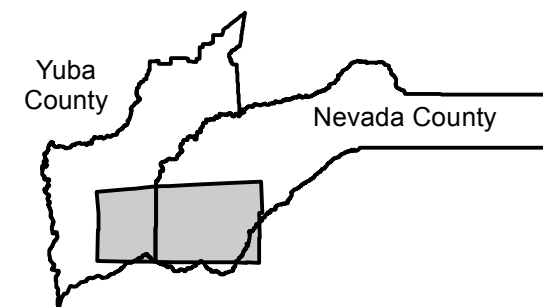
# C-7400

Counties: Yuba, Nevada  
Flight date(s): 08-20-1941  
Scale: 1:32,400  
Overlap: 60%

Note: Area south of Yuba River from Linda to Grass Valley.  
Imagery acquired January 2013.

Complete Metadata:  
<http://www.library.ucsb.edu/mil/aerial-photography-tools>

## FLIGHT LOCATION



0 3 6 12 Miles

Index to Aerial Photography  
Page 1 of 1

Scale of this index: 1:210,000