

# C-6926

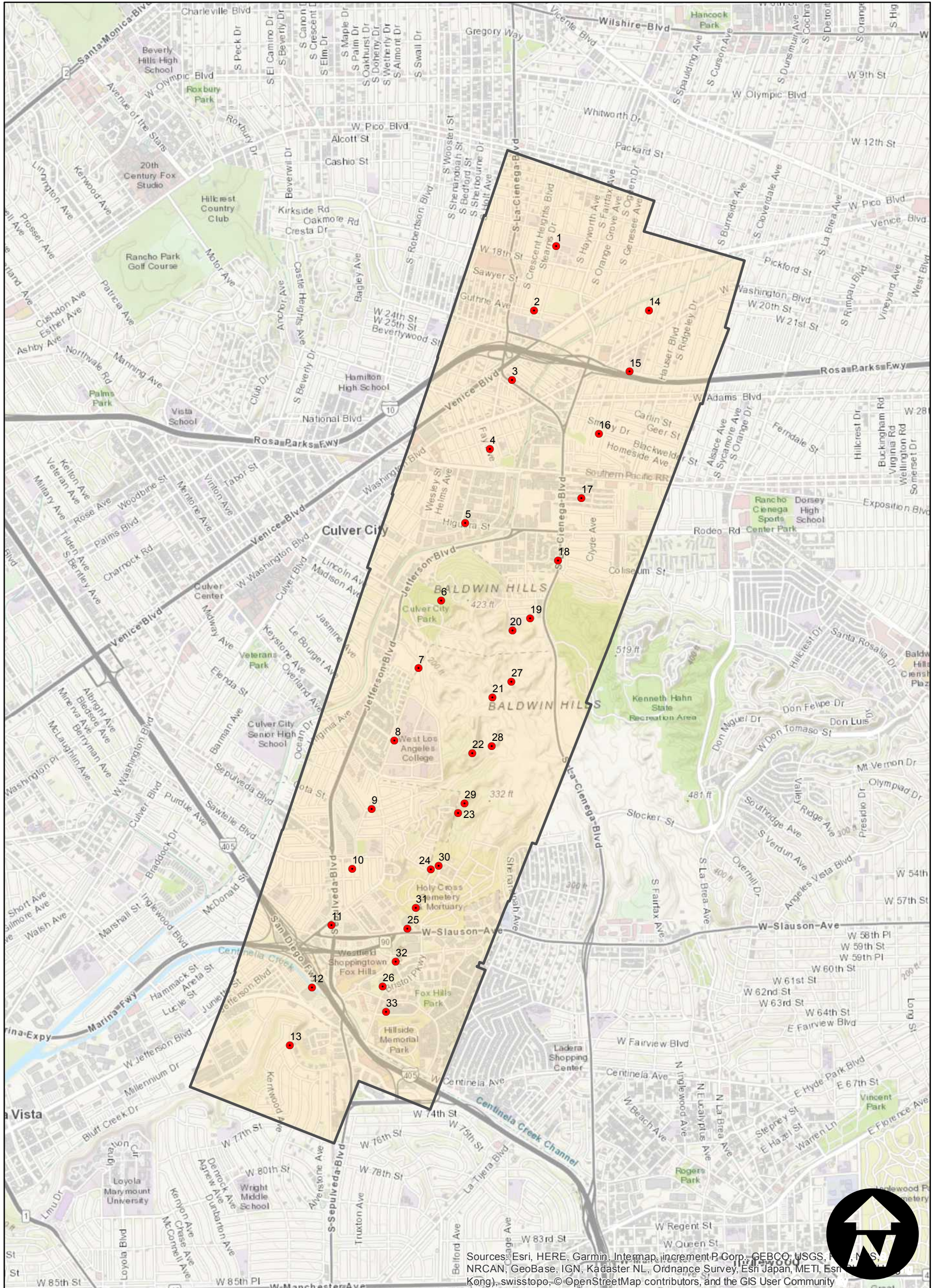
Counties: Los Angeles  
 Flight date(s): 03-03-1941  
 Scale: 1:6,000  
 Overlap: 60-80%

Note: Culver City to Westchester.  
 See C-6926X for additional  
 photography of this area. Imagery  
 acquired Teledyne, Inc., 1986 and  
 Whittier College, January 2013.

## FLIGHT LOCATION



Complete Metadata:  
<https://www.library.ucsb.edu/src/airphotos/aerial-photography-information>



Sources: Esri, HERE, Garmin, Intermap, increment P Corp., GEBCO, USGS, FAO, NPS, NRCAN, GeoBase, IGN, Kadaster NL, Ordnance Survey, Esri Japan, METI, Esri (China), Swisstopo, © OpenStreetMap contributors, and the GIS User Community

