

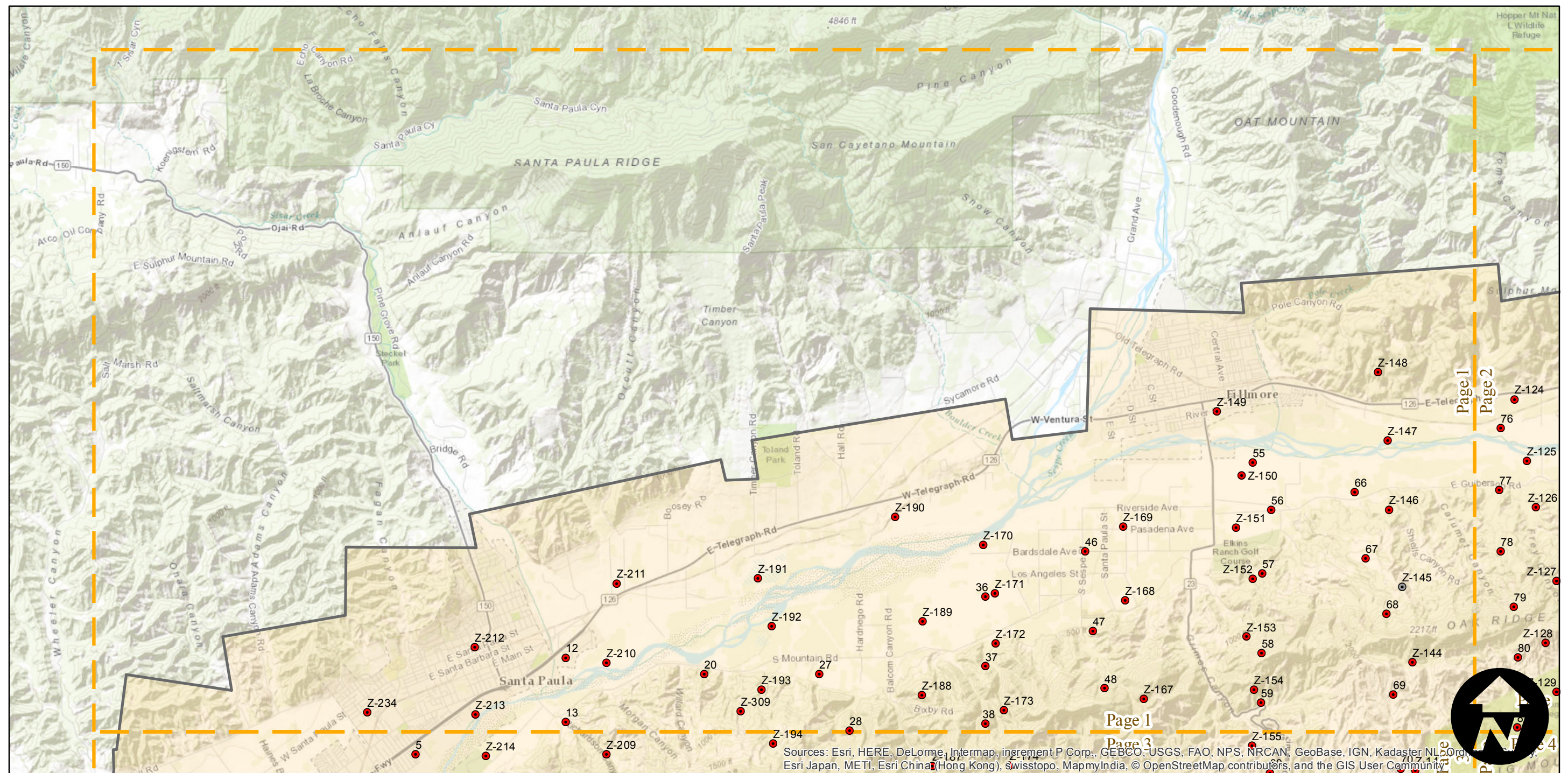
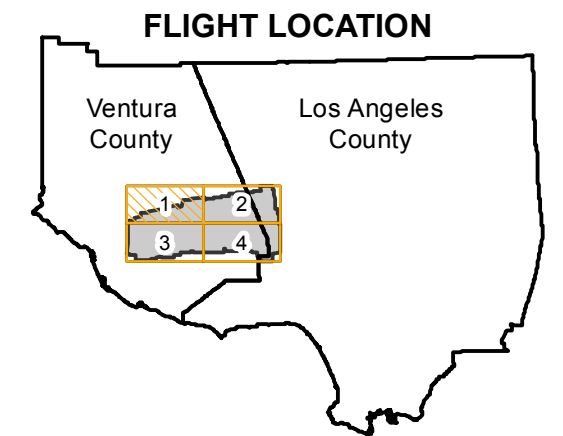
C-688

Counties: Los Angeles, Ventura
Flight date(s): 11-1-1929 to 11-30-1929
Scale: 1: 20,400
Overlap: 60%

Complete Metadata:
<http://www.library.ucsb.edu/mil/aerial-photography-tools>

Note: Negatives acquired 1986 were made from original nitrate film. Prints and nitrate neagitives acquired from Whittier College, January 2013. Nitrate negatives scanned, 2015.

- MIL owns frame
- MIL does not own frame



0 1 2 4 Miles

Index to Aerial Photography
Page 1 of 4

Scale of this index: 1:75,000

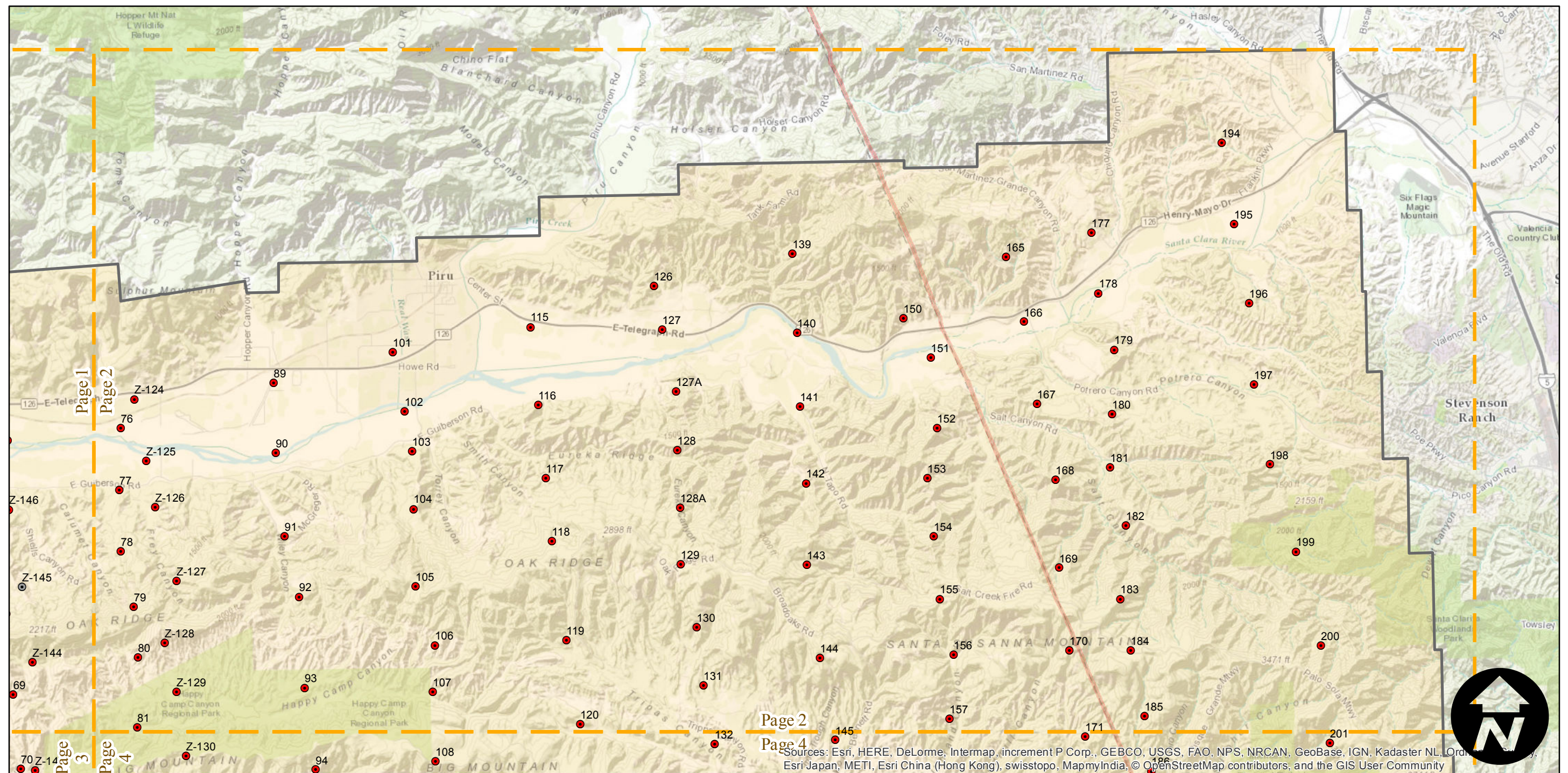
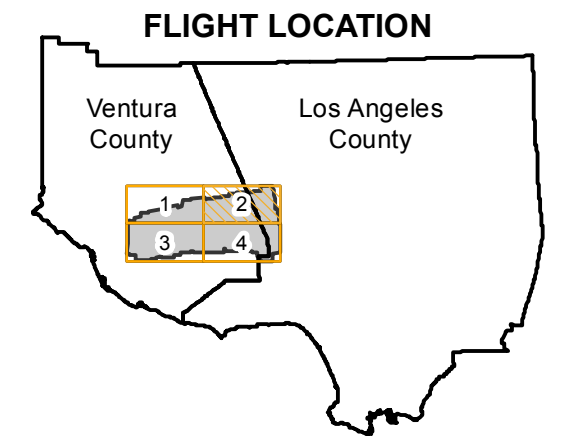
C-688

Counties: Los Angeles, Ventura
Flight date(s): 11-1-1929 to 11-30-1929
Scale: 1: 20,400
Overlap: 60%

Complete Metadata:
<http://www.library.ucsb.edu/mil/aerial-photography-tools>

Note: Negatives acquired 1986 were made from original nitrate film. Prints and nitrate neagitives acquired from Whittier College, January 2013. Nitrate negatives scanned, 2015.

- MIL owns frame
- MIL does not own frame



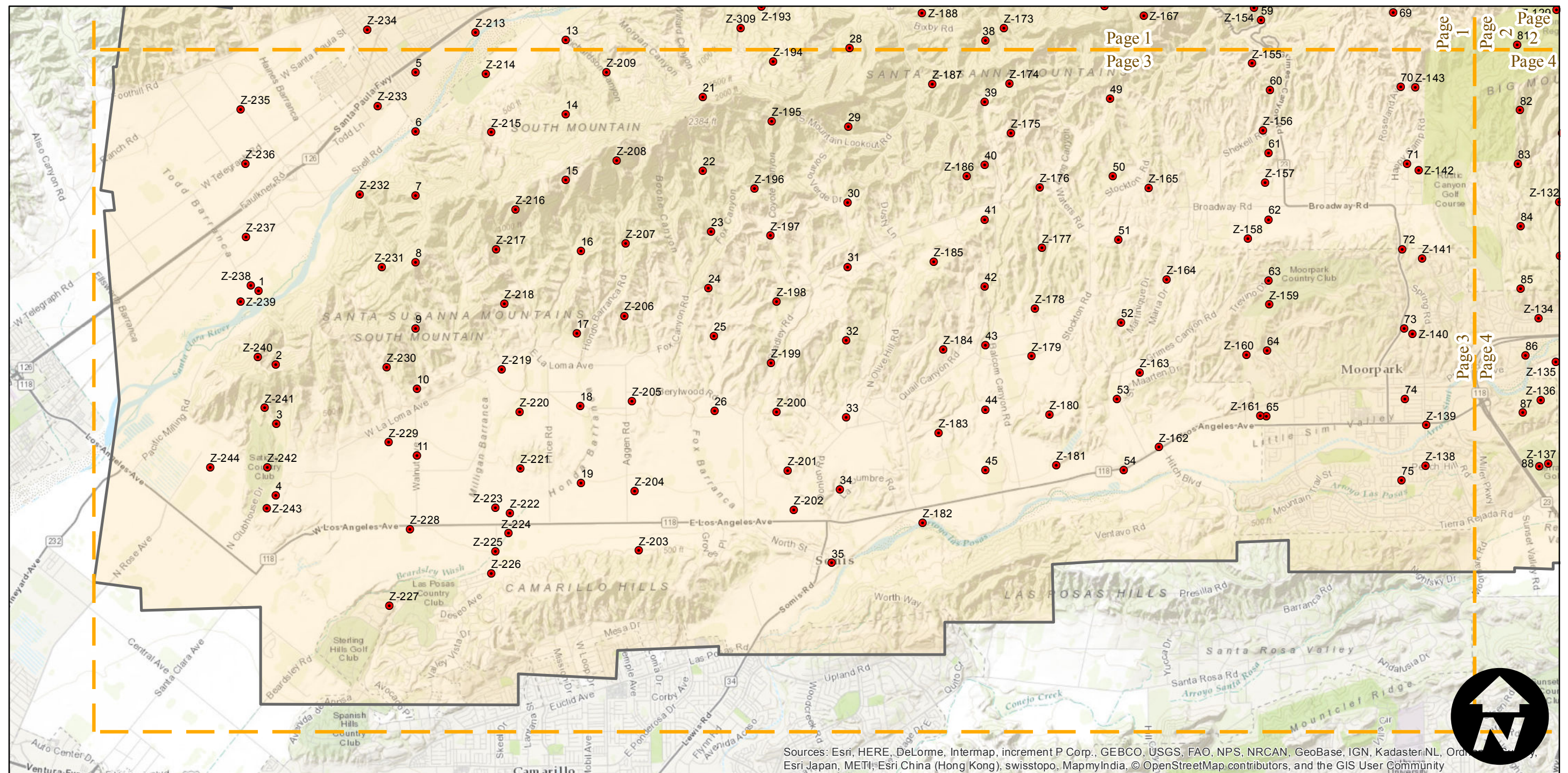
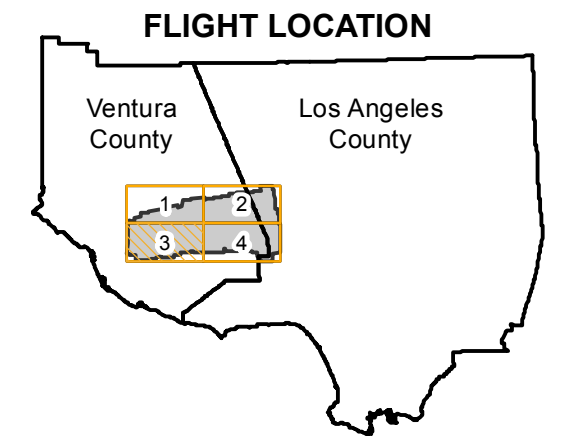
Sources: Esri, HERE, DeLorme, Intermap, increment P Corp., GEBCO, USGS, FAO, NPS, NRCAN, GeoBase, IGN, Kadaster NL, Ordnance Survey, Esri Japan, METI, Esri China (Hong Kong), swisstopo, MapmyIndia, © OpenStreetMap contributors, and the GIS User Community

C-688

Counties: Los Angeles, Ventura
Flight date(s): 11-1-1929 to 11-30-1929
Scale: 1: 20,400
Overlap: 60%

Complete Metadata:
<http://www.library.ucsb.edu/mil/aerial-photography-tools>

Note: Negatives acquired 1986 were made from original nitrate film. Prints and nitrate neagitives acquired from Whittier College, January 2013. Nitrate negatives scanned, 2015.



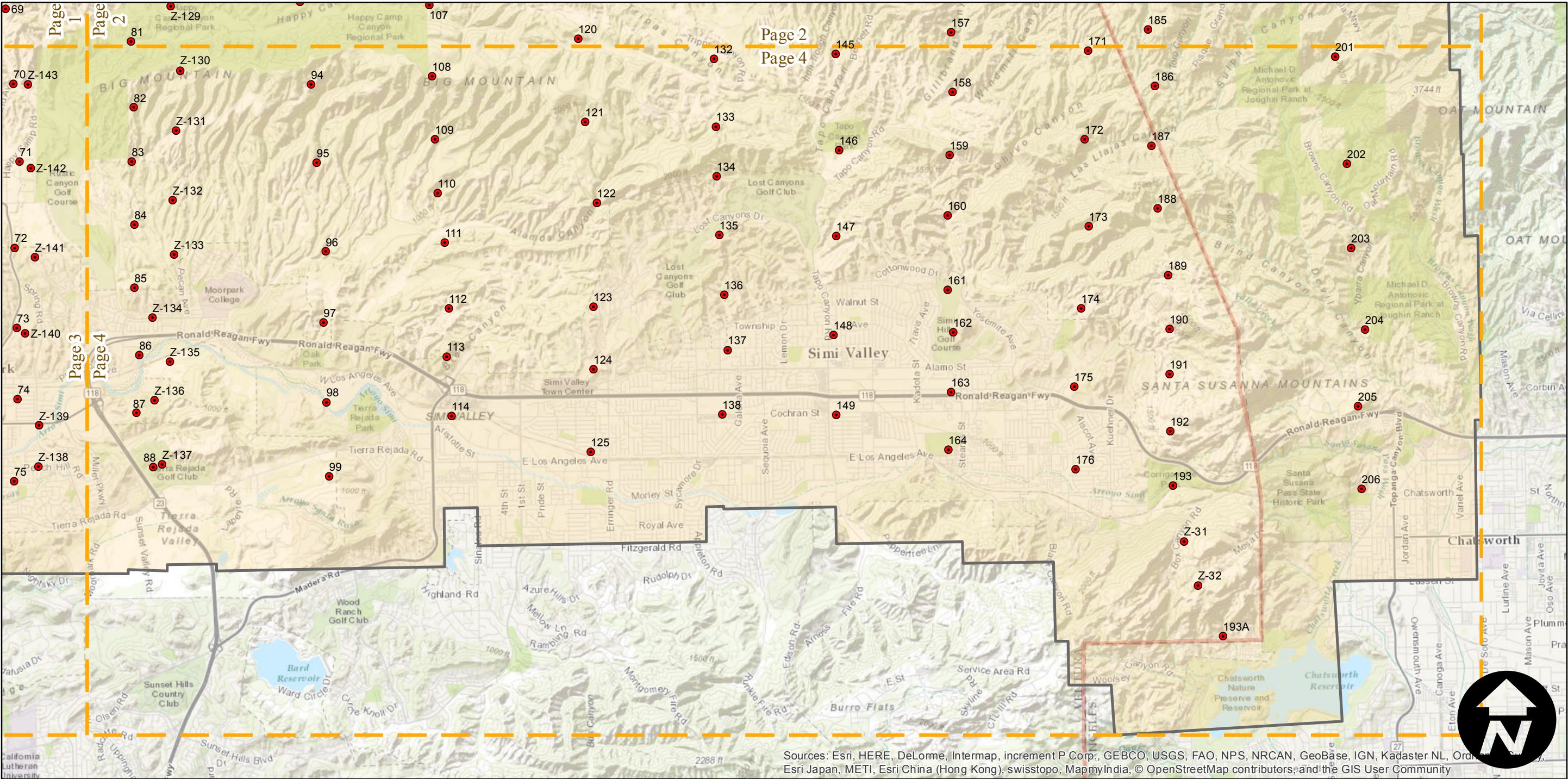
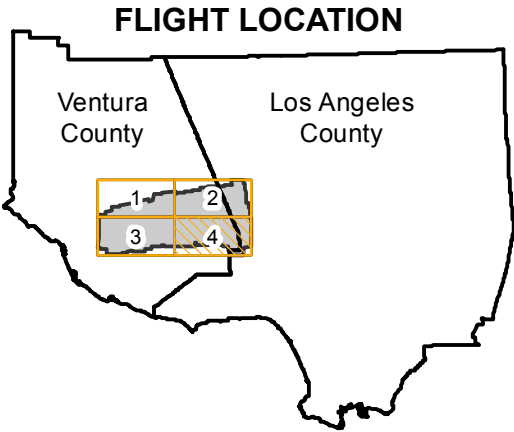
C-688

Counties: Los Angeles, Ventura
Flight date(s): 11-1-1929 to 11-30-1929
Scale: 1: 20,400
Overlap: 60%

Complete Metadata:
<http://www.library.ucsb.edu/mil/aerial-photography-tools>

Note: Negatives acquired 1986 were made from original nitrate film. Prints and nitrate neagitives acquired from Whittier College, January 2013. Nitrate negatives scanned, 2015.

- MIL owns frame
- MIL does not own frame



0 1 2 4 Miles

Index to Aerial Photography
Page 4 of 4

Scale of this index: 1:75,000