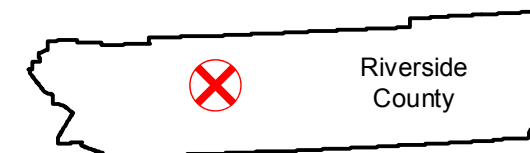


# C-6725 (1:7.2K)

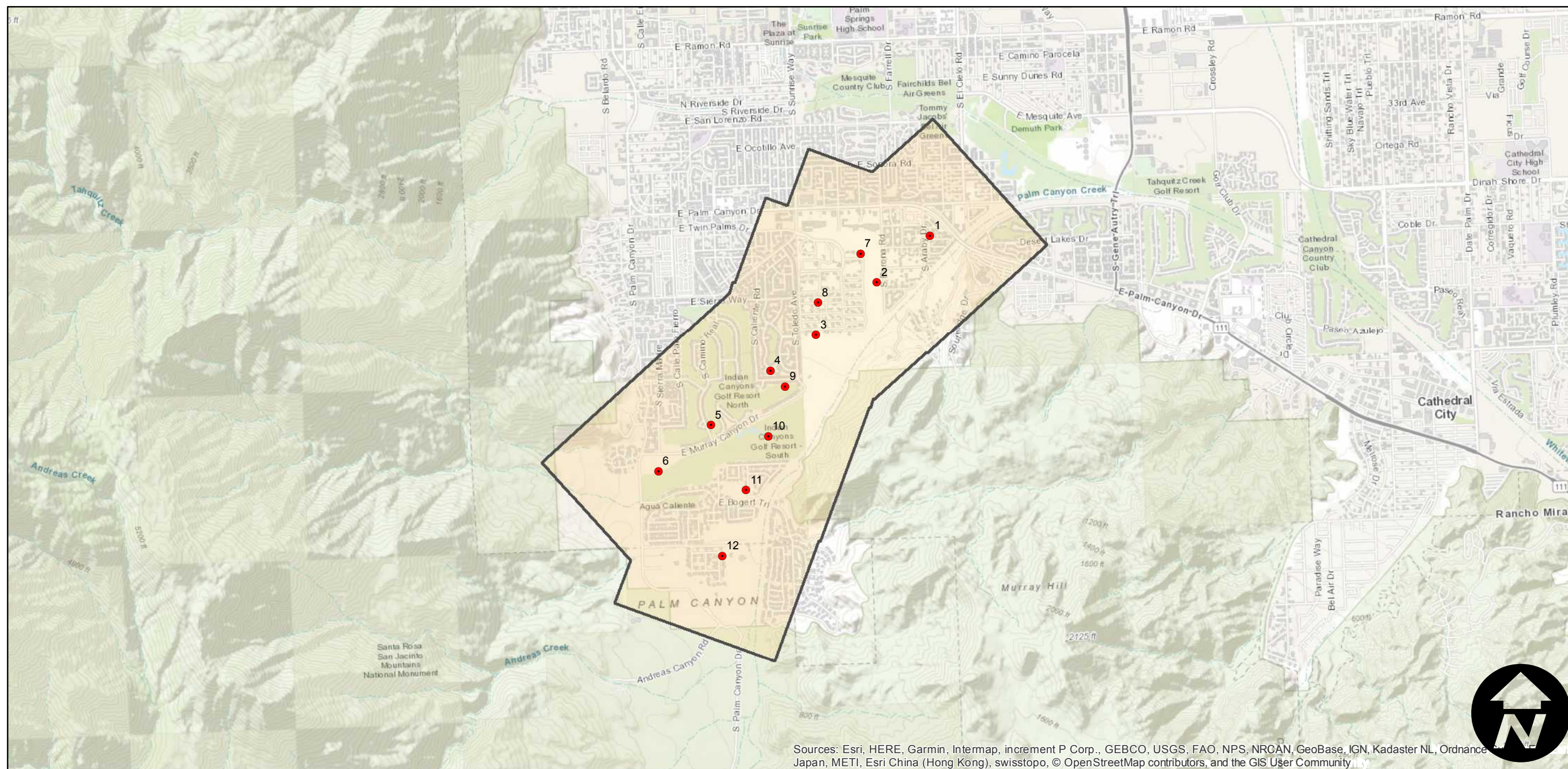
Counties: Riverside  
Flight date(s): 11-05-1940  
Scale: 1:7,200  
Overlap: 60%

Note: Palm Springs; Araby Cove to Palm Canyon. Imagery acquired January 2013. Nitrate negatives scanned, November 2015.

## FLIGHT LOCATION



Complete Metadata:  
<https://www.library.ucsb.edu/src/airphotos/aerial-photography-information>



Sources: Esri, HERE, Garmin, Intermap, increment P Corp., GEBCO, USGS, FAO, NPS, NRCAN, GeoBase, IGN, Kadaster NL, Ordnance Survey, Esri Japan, METI, Esri China (Hong Kong), swisstopo, © OpenStreetMap contributors, and the GIS User Community

