

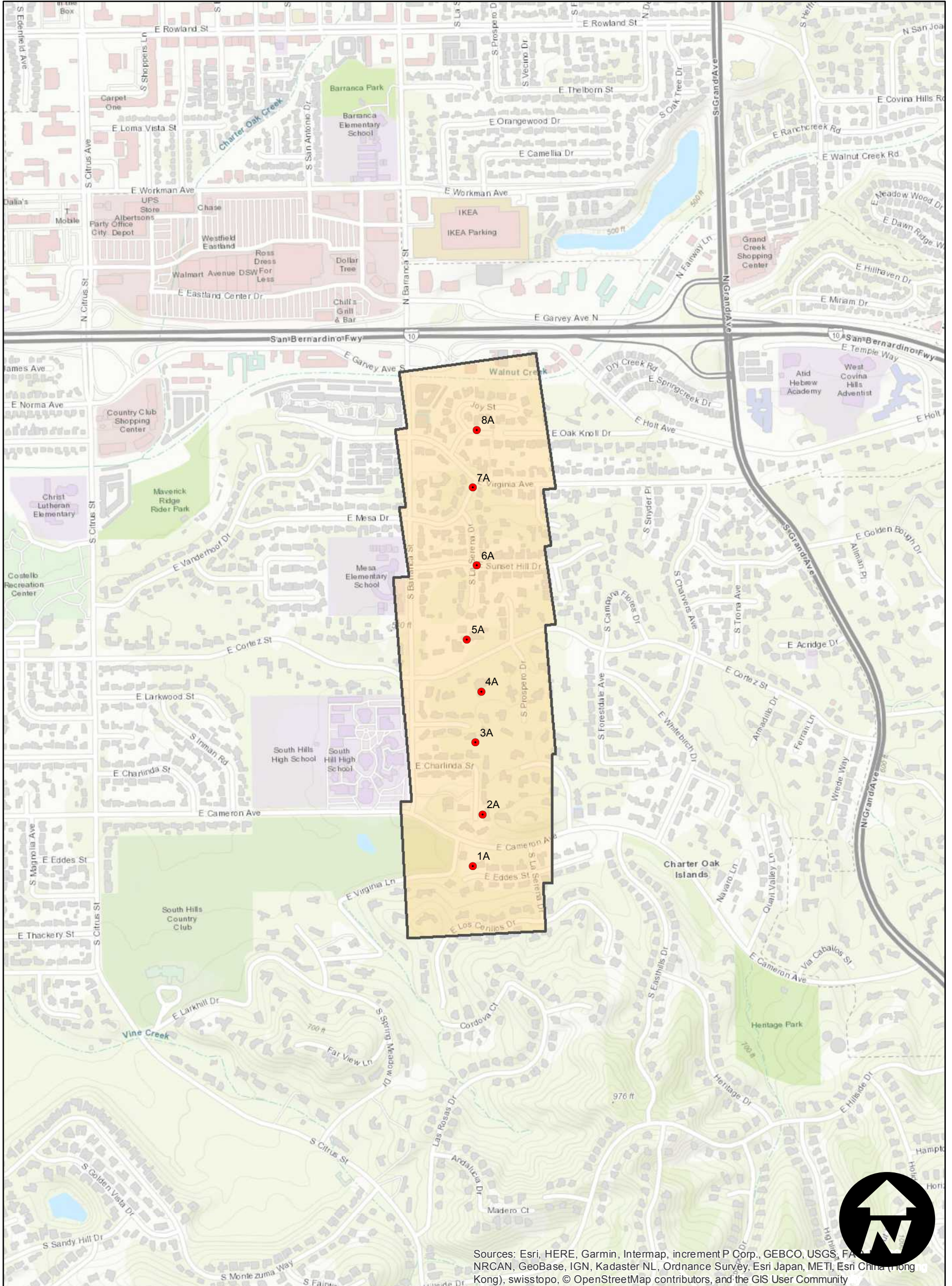
# C-6687X

Counties: Los Angeles  
Flight date(s): 10-18-1940  
Scale: 1:1,500  
Overlap: 50%

Complete Metadata:  
<https://www.library.ucsb.edu/src/airphotos/aerial-photography-information>

Note: South Barranca Street, between East Garvey Avenue and Cameron Avenue. See C-6687 for additional imagery of this area. Imagery acquired January 2013. Nitrate negatives scanned, November 2015.

## FLIGHT LOCATION



Sources: Esri, HERE, Garmin, Intermap, increment P Corp., GEBCO, USGS, FAO, NRCAN, GeoBase, IGN, Kadaster NL, Ordnance Survey, Esri Japan, METI, Esri China (Hong Kong), swisstopo, © OpenStreetMap contributors, and the GIS User Community

0 0.1 0.2 0.4 Miles

Index to Aerial Photography  
Page 1 of 1

Scale of this index: 1:10,000