

C-6466 (Montana)

Counties: Beaverhead, Deer Lodge, Madison, Silver Bow (Montana)

Flight date(s): 06-10-1940 to 06-14-1940

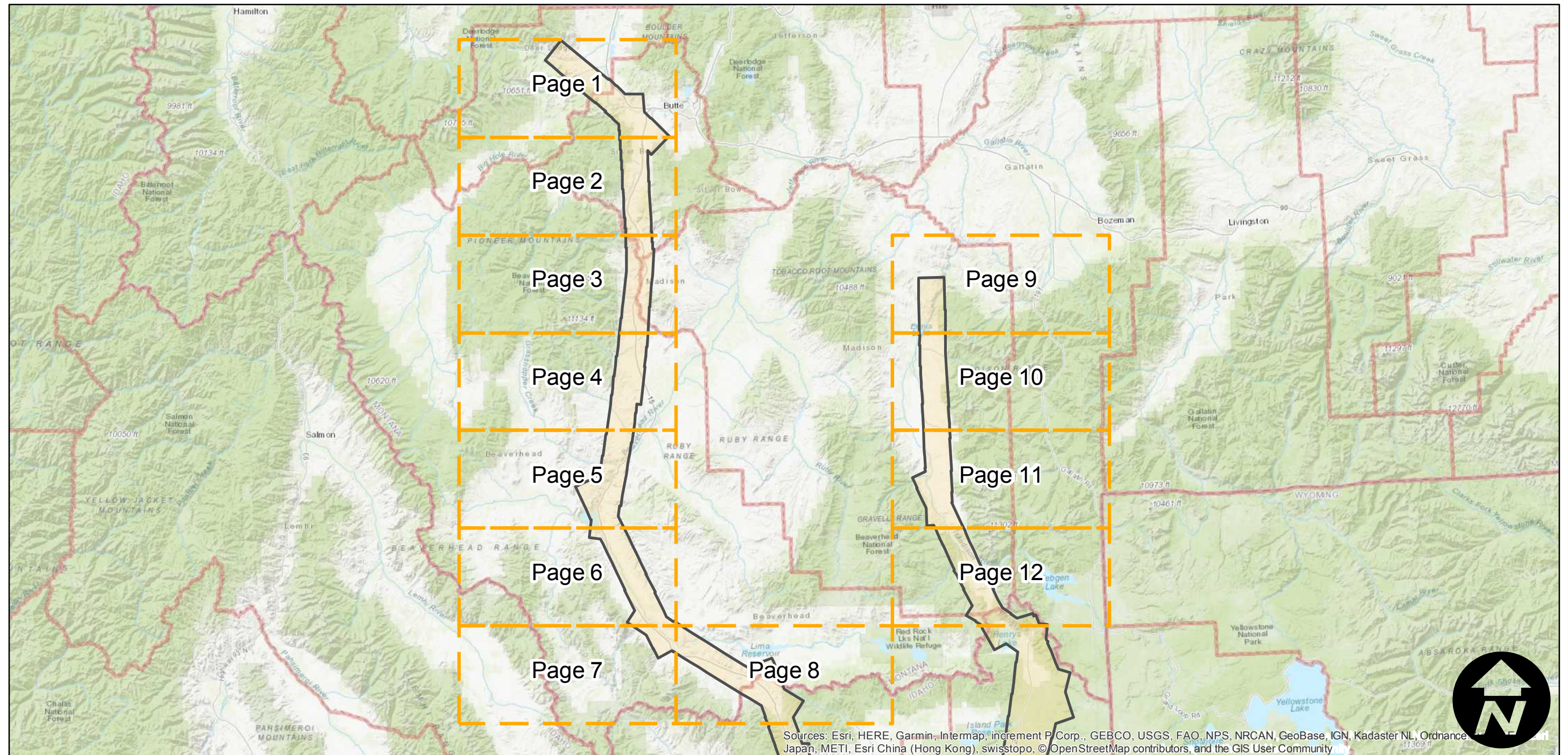
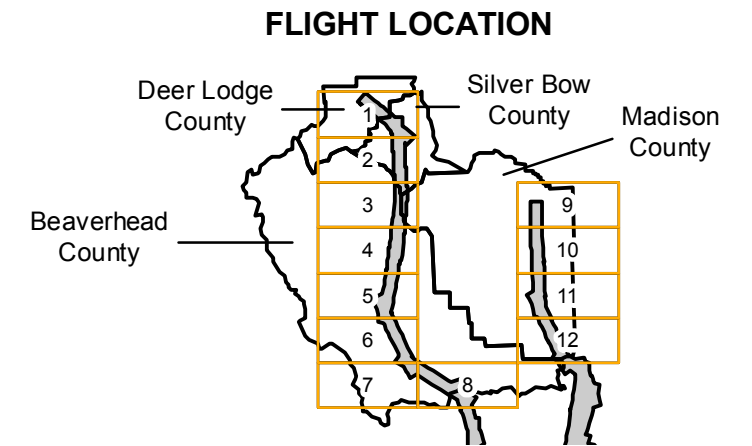
Scale: 1:31,680

Overlap: 60-90%

Complete Metadata:

<https://www.library.ucsb.edu/src/airphotos/aerial-photography-information>

Note: Coverage of Blackfoot, Idaho to Norris, Montana and Anaconda, Montana to Grace, Idaho. Includes Ashton, Big Springs, Dell, Ennis Lake, Henrys Lake, Lyon, Melrose, Monida, Shelly, and more. Imagery acquired January 2013. Nitrate negatives scanned, November 2015.



Sources: Esri, HERE, Garmin, Intermap, increment P Corp., GEBCO, USGS, FAO, NPS, NRCAN, GeoBase, IGN, Kadaster NL, Ordnance Survey, Esri China (Hong Kong), Swisstopo, © OpenStreetMap contributors, and the GIS User Community

0 20 40 80 Miles

Index to Aerial Photography
Page Key

Scale of this index: 1:1,145,000

C-6466 (Montana)

Counties: Beaverhead, Deer Lodge, Madison, Silver Bow (Montana)

Flight date(s): 06-10-1940 to 06-14-1940

Scale: 1:31,680

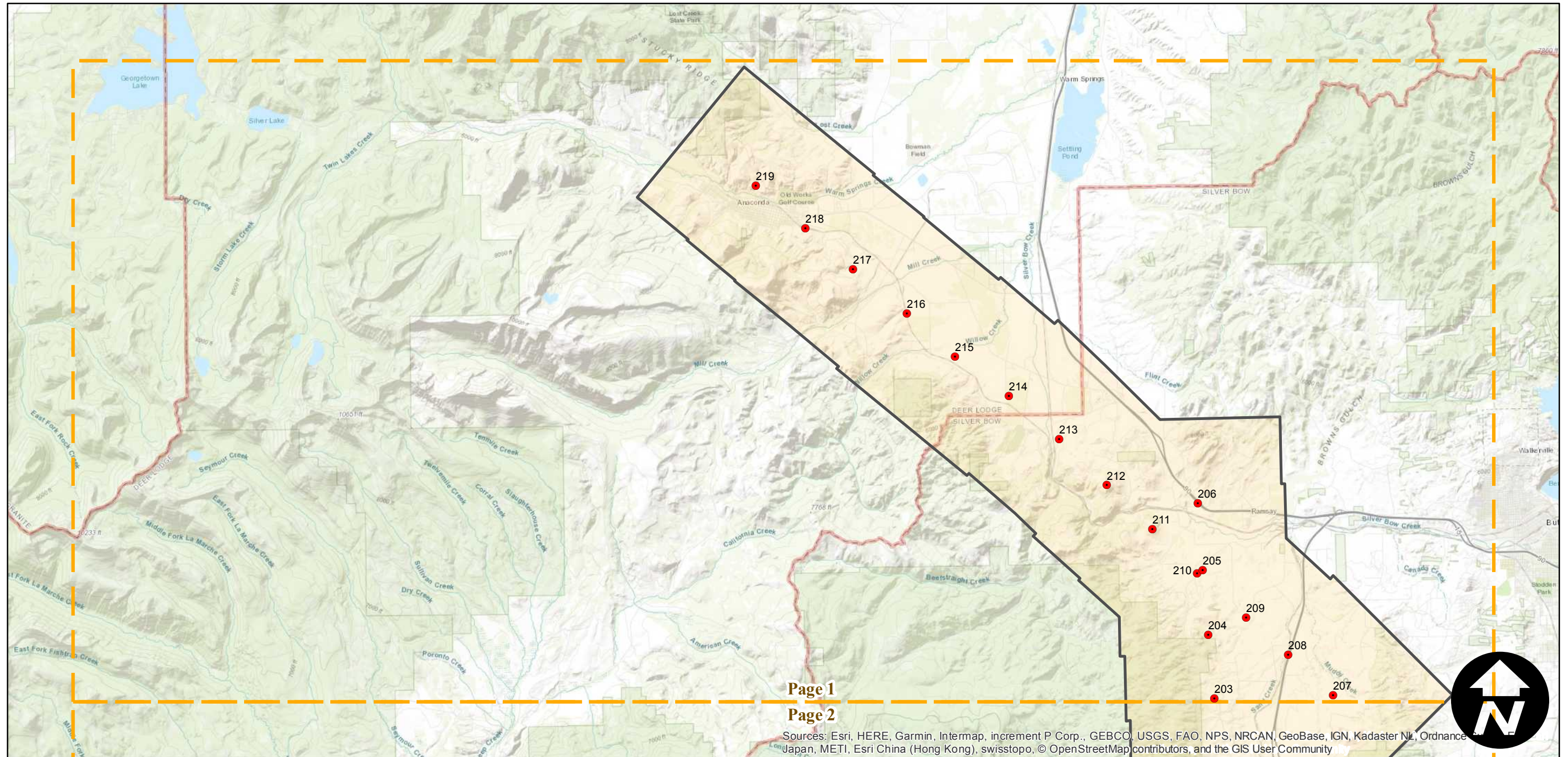
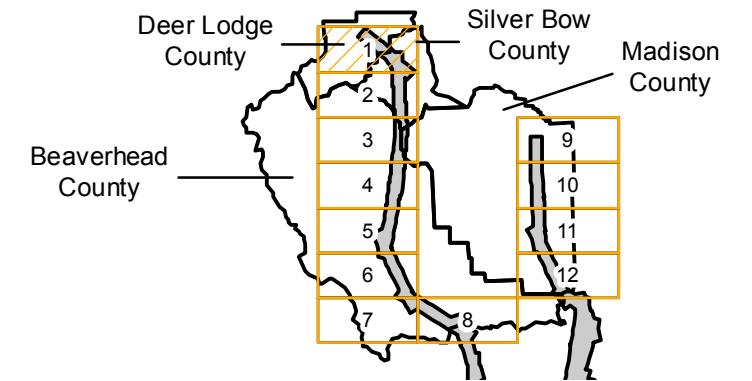
Overlap: 60-90%

Complete Metadata:

<https://www.library.ucsb.edu/src/airphotos/aerial-photography-information>

Note: Coverage of Blackfoot, Idaho to Norris, Montana and Anaconda, Montana to Grace, Idaho. Includes Ashton, Big Springs, Dell, Ennis Lake, Henrys Lake, Lyon, Melrose, Monida, Shelly, and more. Imagery acquired January 2013. Nitrate negatives scanned, November 2015.

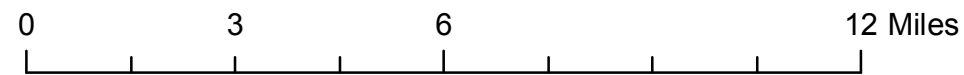
FLIGHT LOCATION



Page 1

Page 2

Sources: Esri, HERE, Garmin, Intermap, increment P Corp., GEBCO, USGS, FAO, NPS, NRCAN, GeoBase, IGN, Kadaster NL, Ordnance Survey, Esri Japan, METI, Esri China (Hong Kong), swisstopo, © OpenStreetMap contributors, and the GIS User Community



C-6466 (Montana)

Counties: Beaverhead, Deer Lodge, Madison, Silver Bow (Montana)

Flight date(s): 06-10-1940 to 06-14-1940

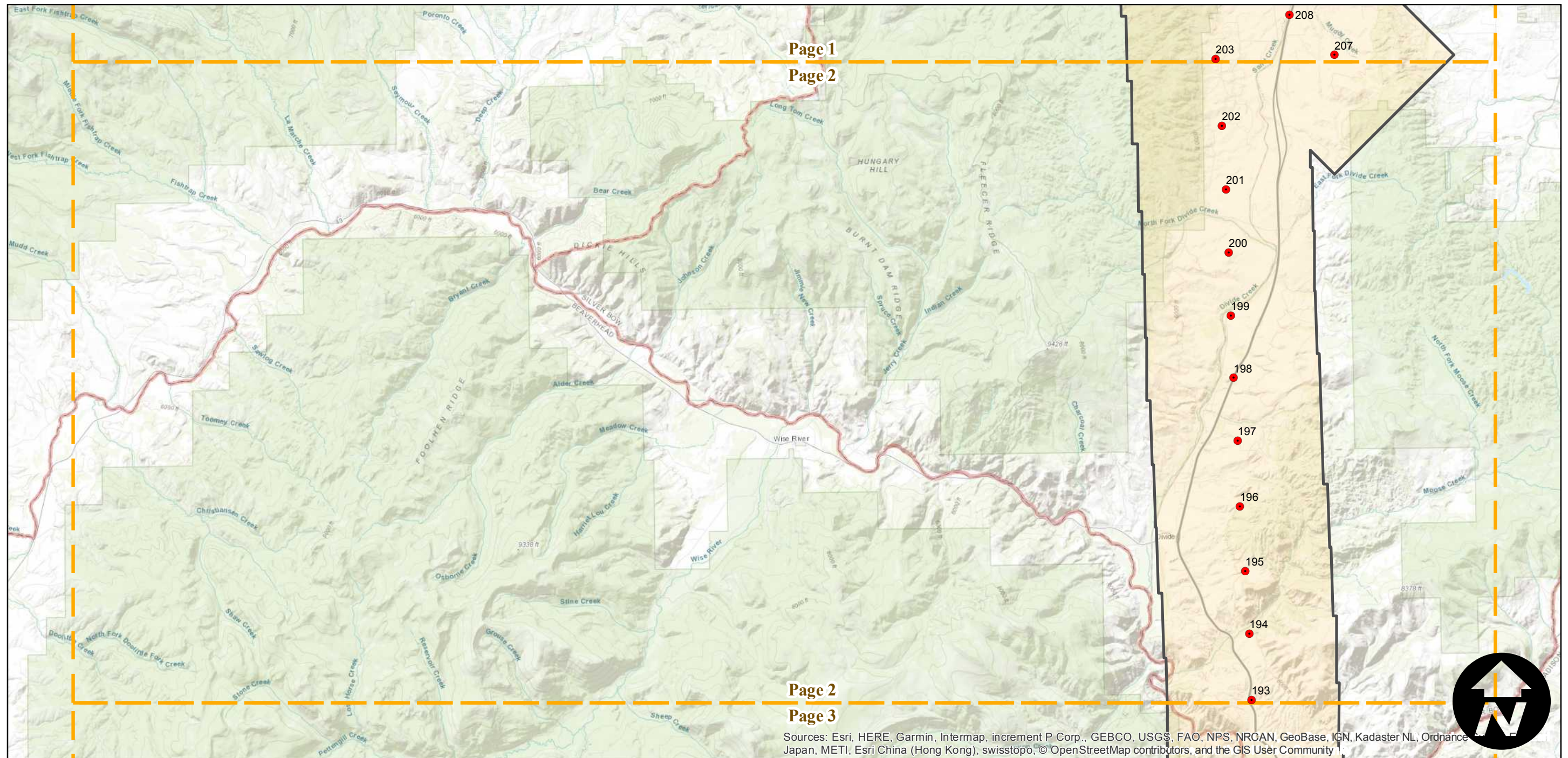
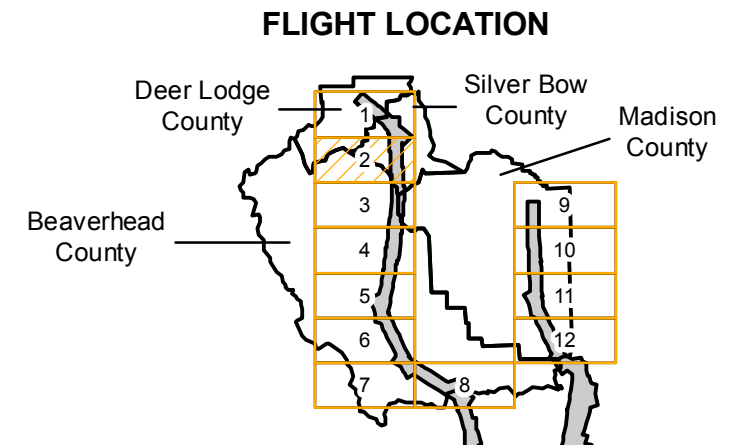
Scale: 1:31,680

Overlap: 60-90%

Complete Metadata:

<https://www.library.ucsb.edu/src/airphotos/aerial-photography-information>

Note: Coverage of Blackfoot, Idaho to Norris, Montana and Anaconda, Montana to Grace, Idaho. Includes Ashton, Big Springs, Dell, Ennis Lake, Henrys Lake, Lyon, Melrose, Monida, Shelly, and more. Imagery acquired January 2013. Nitrate negatives scanned, November 2015.



Sources: Esri, HERE, Garmin, Intermap, increment P Corp., GEBCO, USGS, FAO, NPS, NRCAN, GeoBase, IGN, Kadaster NL, Ordnance Survey, Esri China (Hong Kong), Swisstopo, © OpenStreetMap contributors, and the GIS User Community

C-6466 (Montana)

Counties: Beaverhead, Deer Lodge, Madison, Silver Bow (Montana)

Flight date(s): 06-10-1940 to 06-14-1940

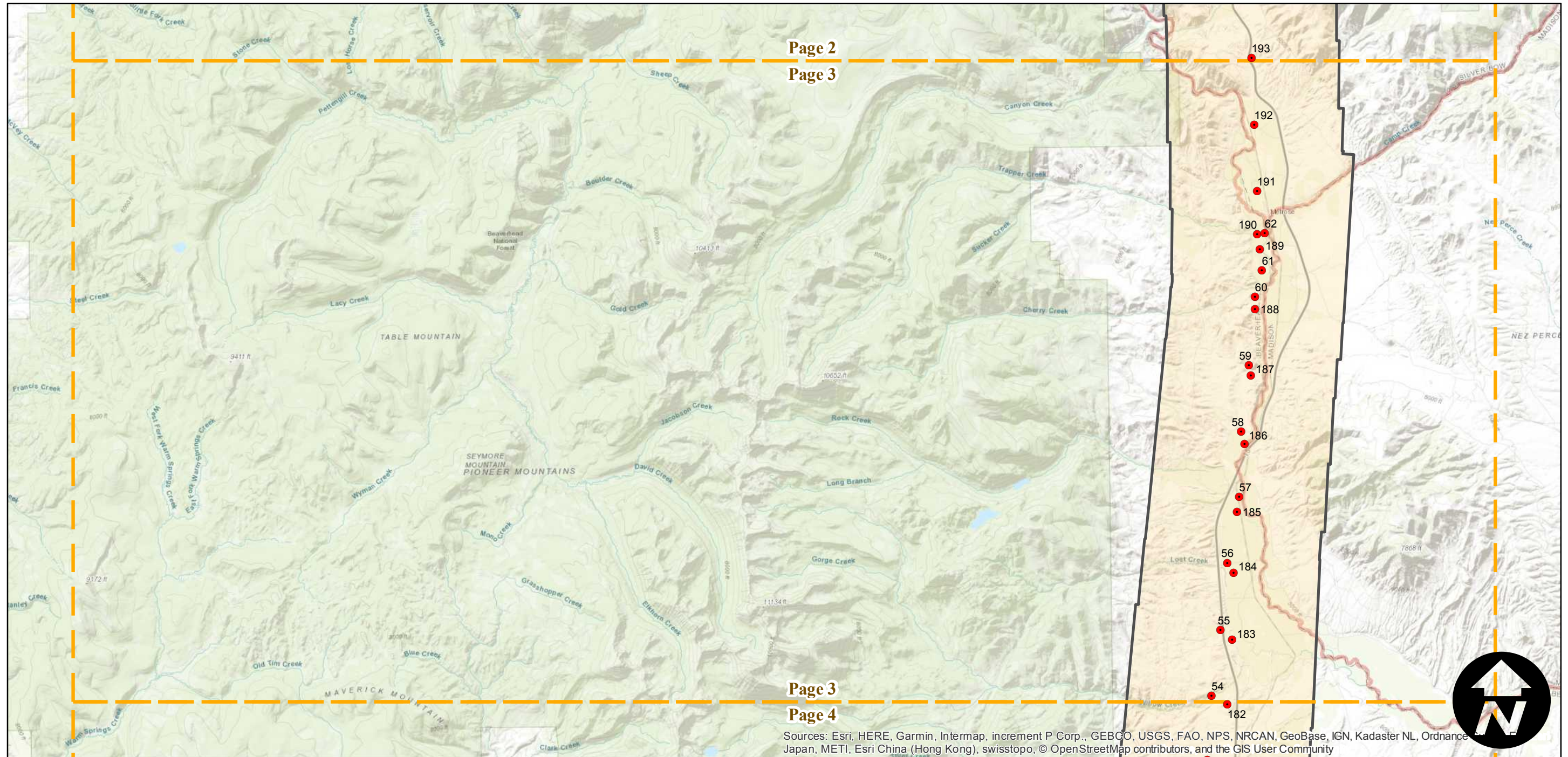
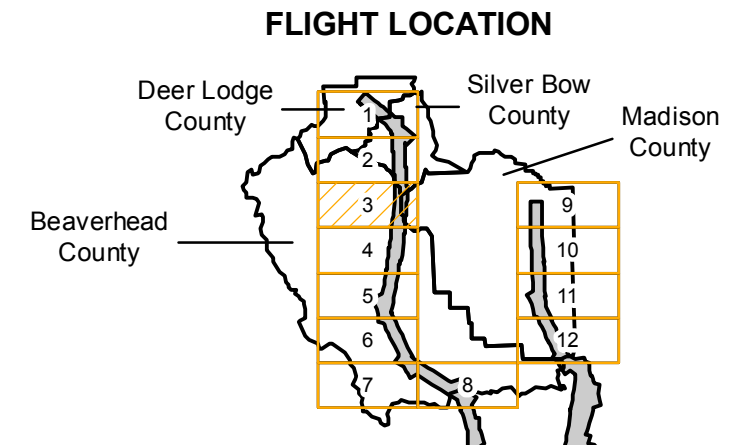
Scale: 1:31,680

Overlap: 60-90%

Complete Metadata:

<https://www.library.ucsb.edu/src/airphotos/aerial-photography-information>

Note: Coverage of Blackfoot, Idaho to Norris, Montana and Anaconda, Montana to Grace, Idaho. Includes Ashton, Big Springs, Dell, Ennis Lake, Henrys Lake, Lyon, Melrose, Monida, Shelly, and more. Imagery acquired January 2013. Nitrate negatives scanned, November 2015.



C-6466 (Montana)

Counties: Beaverhead, Deer Lodge, Madison, Silver Bow (Montana)

Flight date(s): 06-10-1940 to 06-14-1940

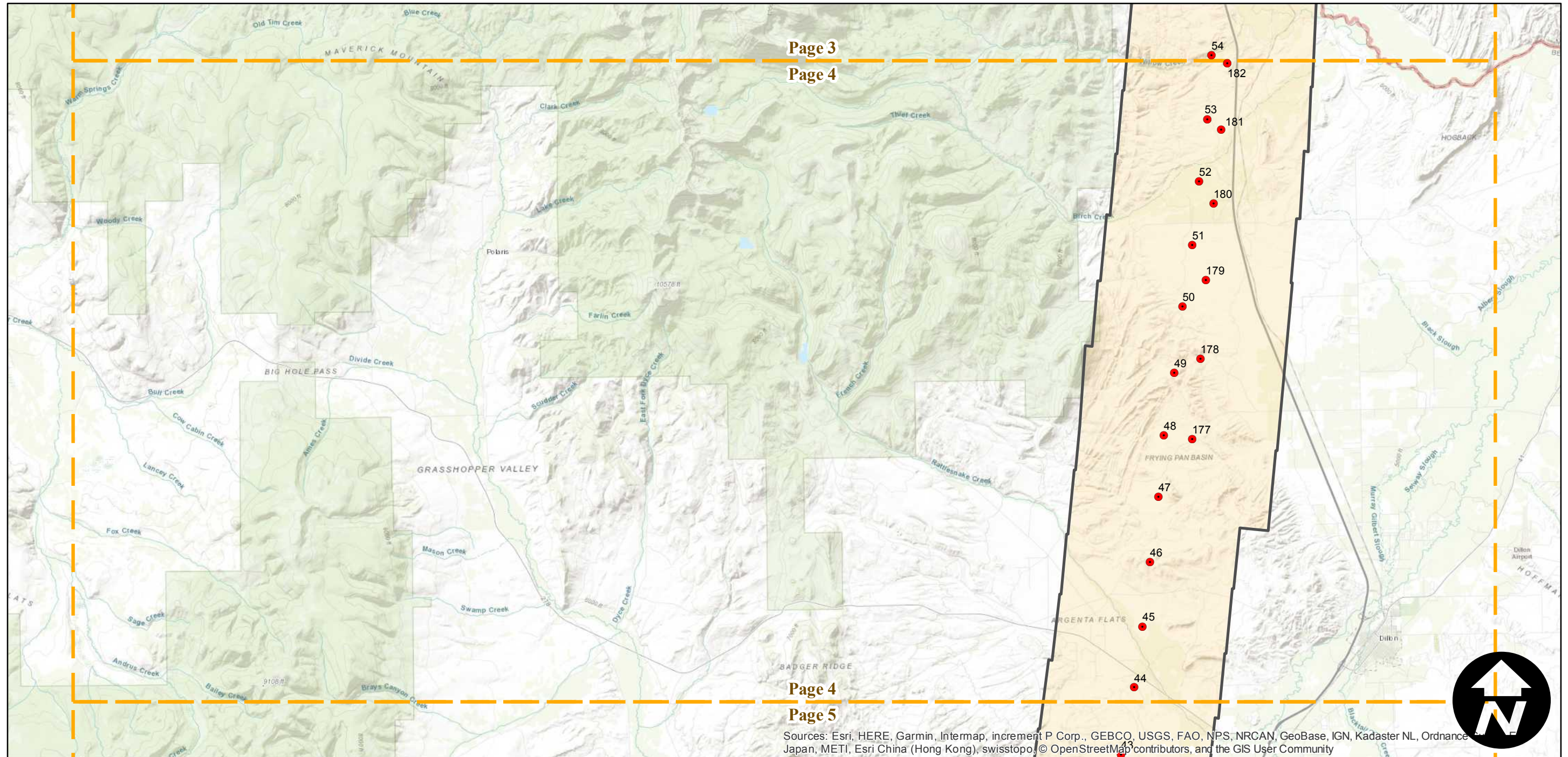
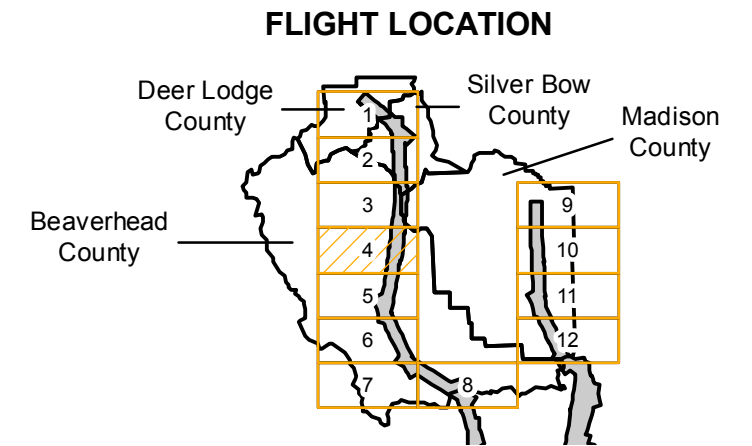
Scale: 1:31,680

Overlap: 60-90%

Complete Metadata:

<https://www.library.ucsb.edu/src/airphotos/aerial-photography-information>

Note: Coverage of Blackfoot, Idaho to Norris, Montana and Anaconda, Montana to Grace, Idaho. Includes Ashton, Big Springs, Dell, Ennis Lake, Henrys Lake, Lyon, Melrose, Monida, Shelly, and more. Imagery acquired January 2013. Nitrate negatives scanned, November 2015.



Sources: Esri, HERE, Garmin, Intermap, increment P Corp., GEBCO, USGS, FAO, NPS, NRCAN, GeoBase, IGN, Kadaster NL, Ordnance Survey, Esri China (Hong Kong), Swisstopo, © OpenStreetMap contributors, and the GIS User Community

C-6466 (Montana)

Counties: Beaverhead, Deer Lodge, Madison, Silver Bow (Montana)

Flight date(s): 06-10-1940 to 06-14-1940

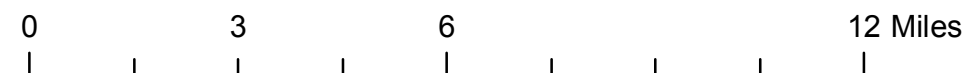
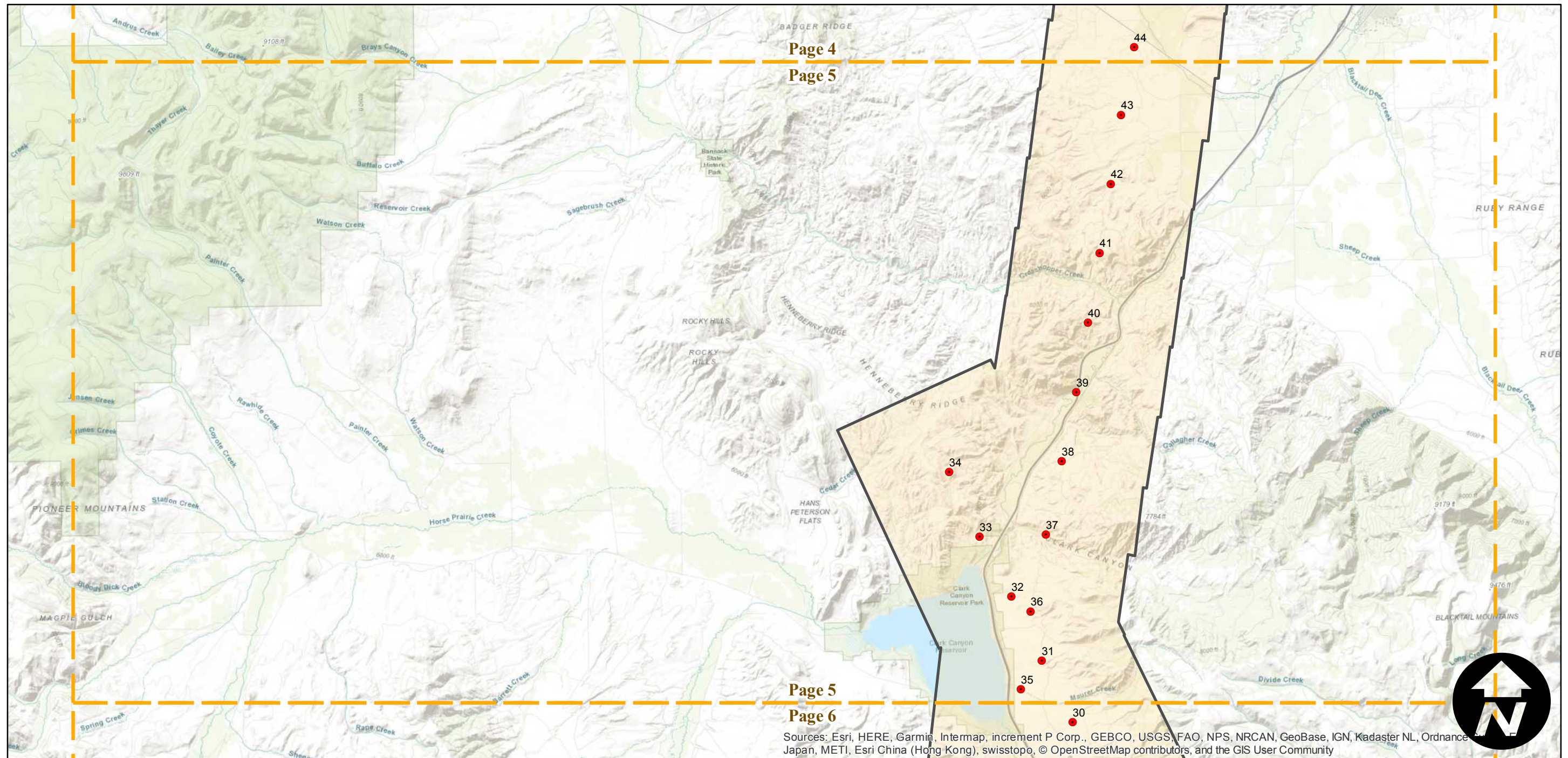
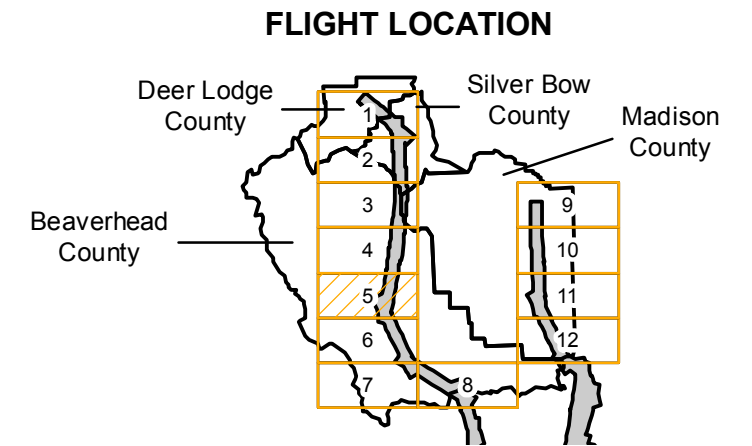
Scale: 1:31,680

Overlap: 60-90%

Complete Metadata:

<https://www.library.ucsb.edu/src/airphotos/aerial-photography-information>

Note: Coverage of Blackfoot, Idaho to Norris, Montana and Anaconda, Montana to Grace, Idaho. Includes Ashton, Big Springs, Dell, Ennis Lake, Henrys Lake, Lyon, Melrose, Monida, Shelly, and more. Imagery acquired January 2013. Nitrate negatives scanned, November 2015.



Sources: Esri, HERE, Garmin, Intermap, increment P Corp., GEBCO, USGS, FAO, NPS, NRCAN, GeoBase, IGN, Kadaster NL, Ordnance Survey, Esri, METI, Esri China (Hong Kong), swisstopo, © OpenStreetMap contributors, and the GIS User Community

C-6466 (Montana)

Counties: Beaverhead, Deer Lodge, Madison, Silver Bow (Montana)

Flight date(s): 06-10-1940 to 06-14-1940

Scale: 1:31,680

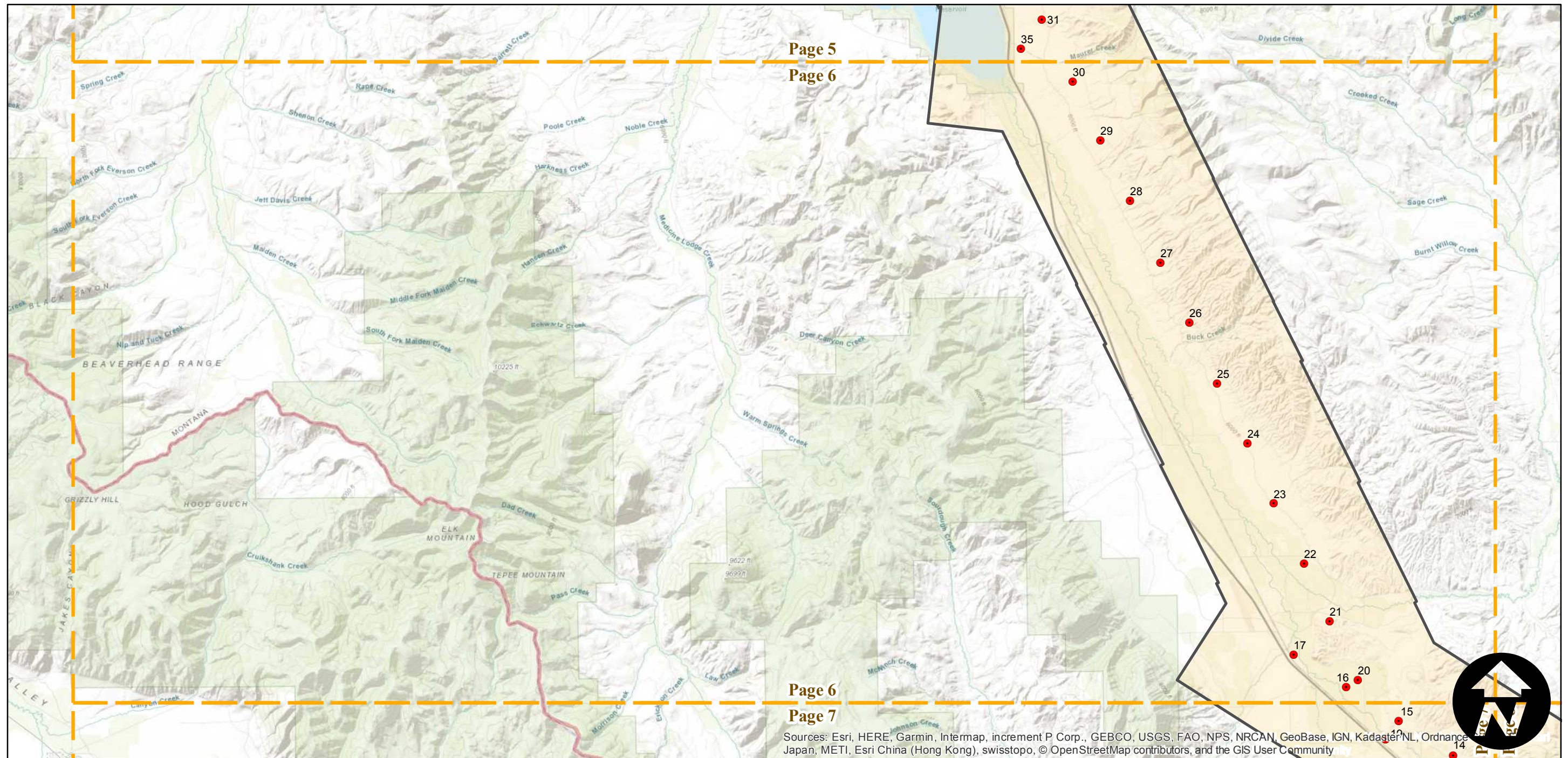
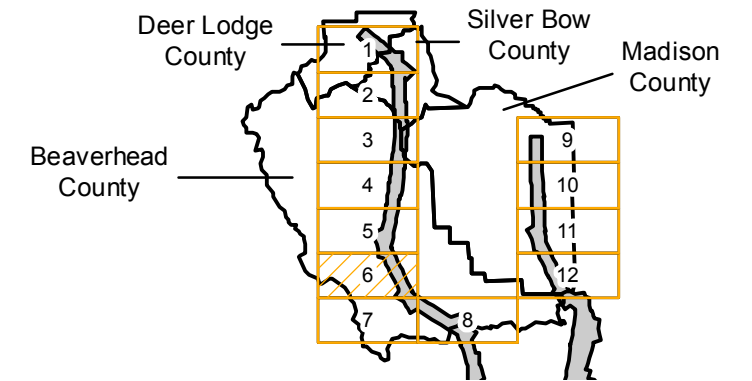
Overlap: 60-90%

Complete Metadata:

<https://www.library.ucsb.edu/src/airphotos/aerial-photography-information>

Note: Coverage of Blackfoot, Idaho to Norris, Montana and Anaconda, Montana to Grace, Idaho. Includes Ashton, Big Springs, Dell, Ennis Lake, Henrys Lake, Lyon, Melrose, Monida, Shelly, and more. Imagery acquired January 2013. Nitrate negatives scanned, November 2015.

FLIGHT LOCATION



0 3 6 12 Miles

Index to Aerial Photography
Page 6 of 12

Scale of this index: 1:175,000

Page 5

Page 6

Page 6

Page 7

Sources: Esri, HERE, Garmin, Intermap, increment P Corp., GEBCO, USGS, FAO, NPS, NRCAN, GeoBase, IGN, Kadaster NL, Ordnance Survey, Esri China (Hong Kong), Swisstopo, © OpenStreetMap contributors, and the GIS User Community

C-6466 (Montana)

Counties: Beaverhead, Deer Lodge, Madison, Silver Bow (Montana)

Flight date(s): 06-10-1940 to 06-14-1940

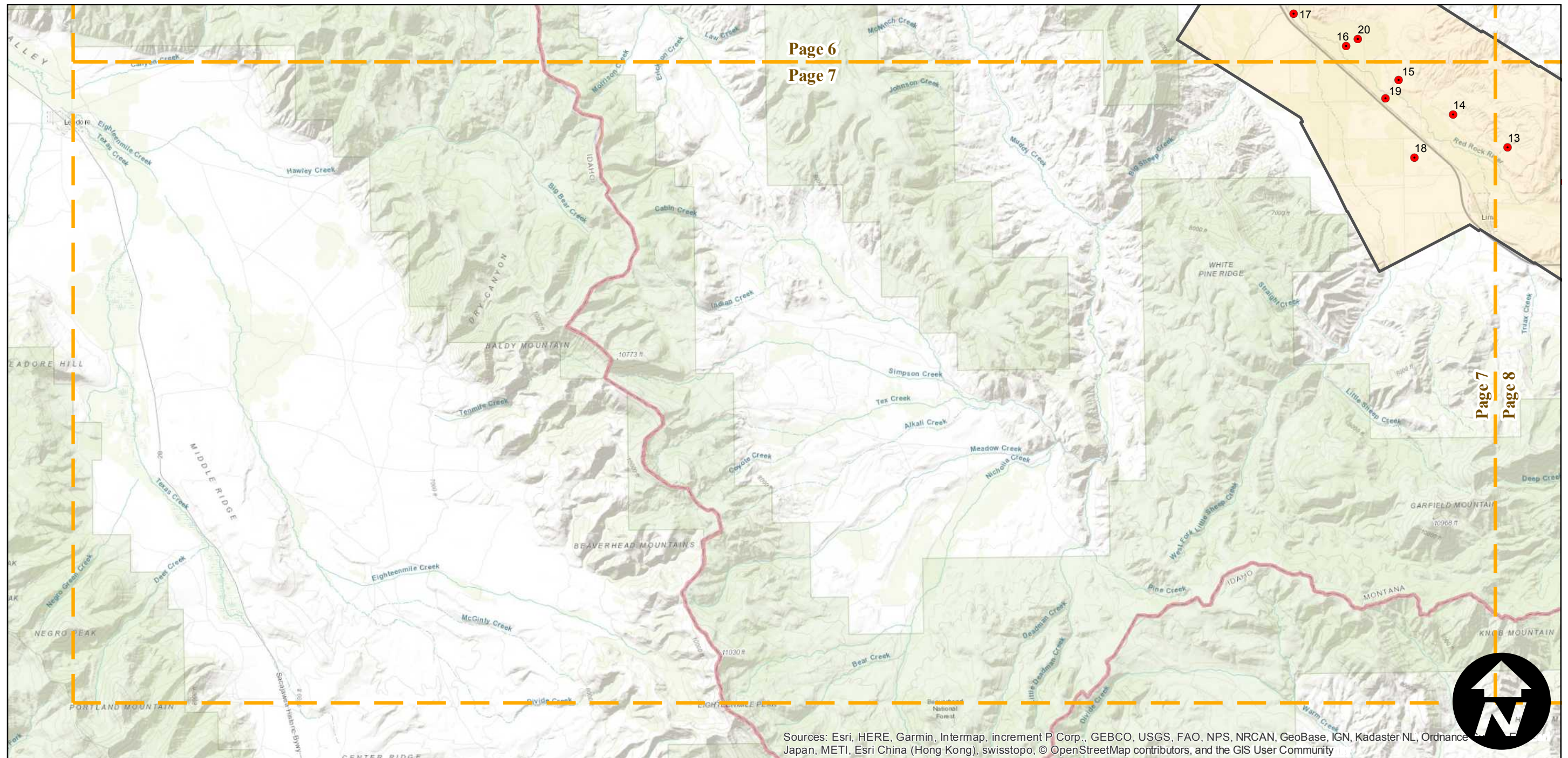
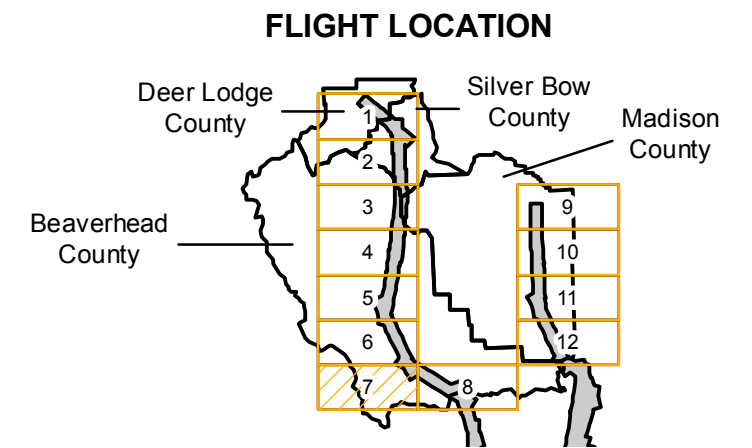
Scale: 1:31,680

Overlap: 60-90%

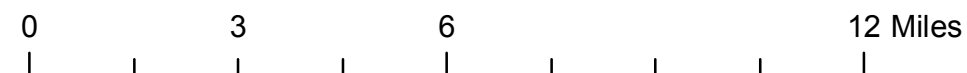
Complete Metadata:

<https://www.library.ucsb.edu/src/airphotos/aerial-photography-information>

Note: Coverage of Blackfoot, Idaho to Norris, Montana and Anaconda, Montana to Grace, Idaho. Includes Ashton, Big Springs, Dell, Ennis Lake, Henrys Lake, Lyon, Melrose, Monida, Shelly, and more. Imagery acquired January 2013. Nitrate negatives scanned, November 2015.



Sources: Esri, HERE, Garmin, Intermap, increment P Corp., GEBCO, USGS, FAO, NPS, NRCAN, GeoBase, IGN, Kadaster NL, Ordnance Survey, Esri Japan, METI, Esri China (Hong Kong), swisstopo, © OpenStreetMap contributors, and the GIS User Community



Index to Aerial Photography
Page 7 of 12

Scale of this index: 1:175,000

C-6466 (Montana)

Counties: Beaverhead, Deer Lodge, Madison, Silver Bow (Montana)

Flight date(s): 06-10-1940 to 06-14-1940

Scale: 1:31,680

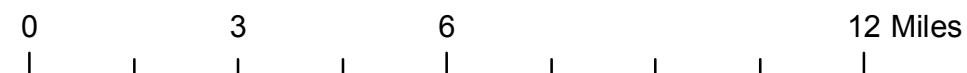
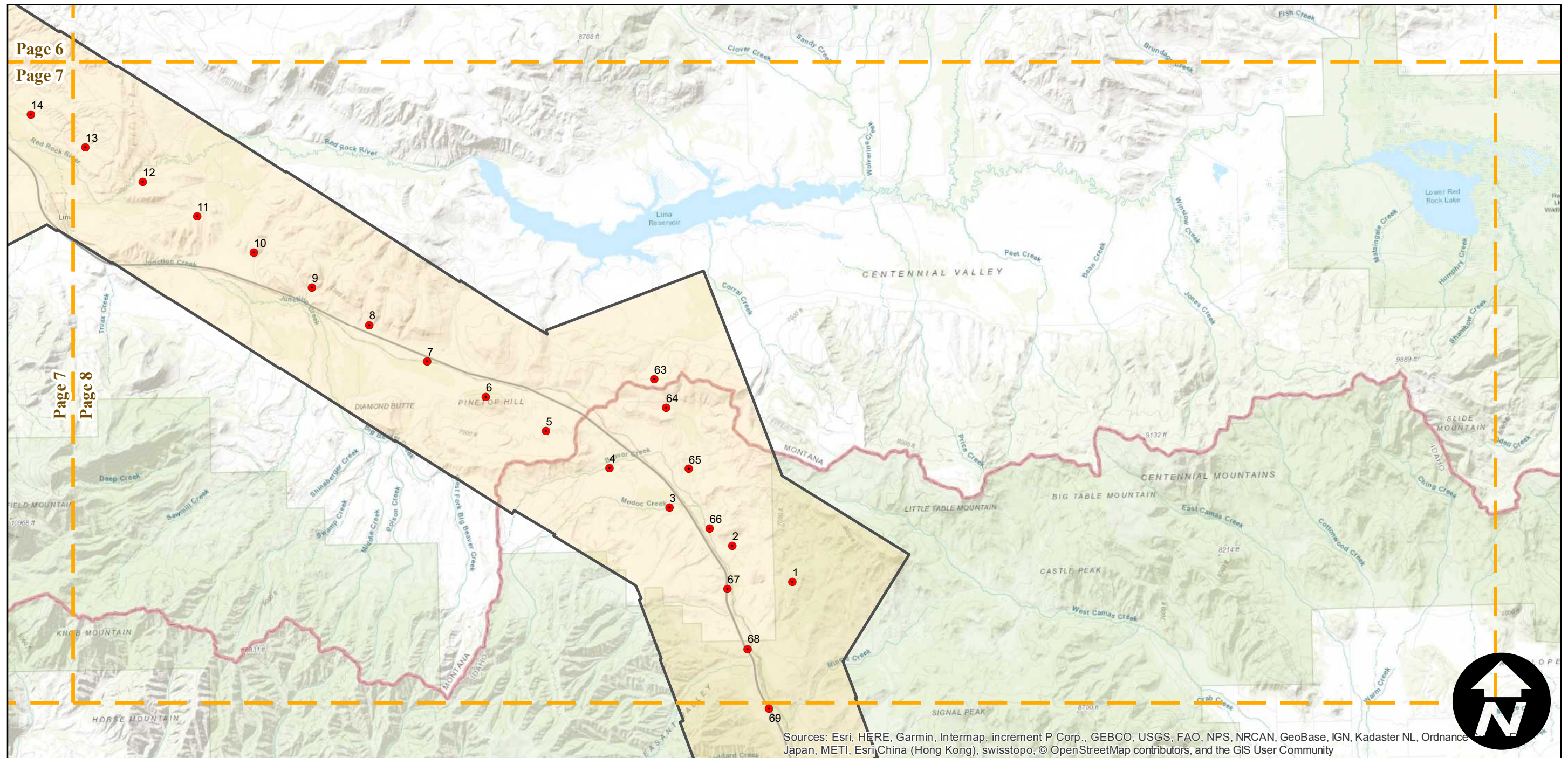
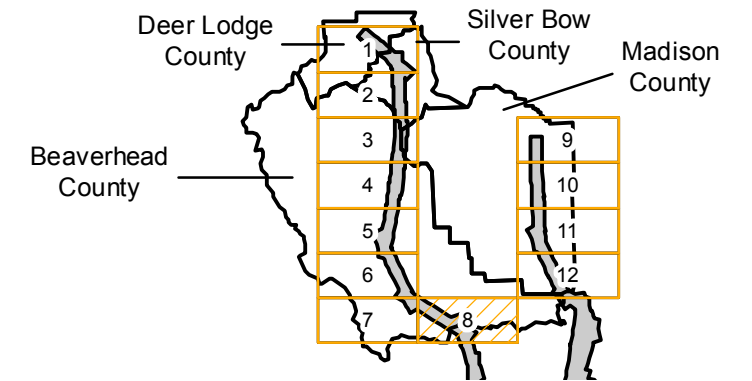
Overlap: 60-90%

Complete Metadata:

<https://www.library.ucsb.edu/src/airphotos/aerial-photography-information>

Note: Coverage of Blackfoot, Idaho to Norris, Montana and Anaconda, Montana to Grace, Idaho. Includes Ashton, Big Springs, Dell, Ennis Lake, Henrys Lake, Lyon, Melrose, Monida, Shelly, and more. Imagery acquired January 2013. Nitrate negatives scanned, November 2015.

FLIGHT LOCATION



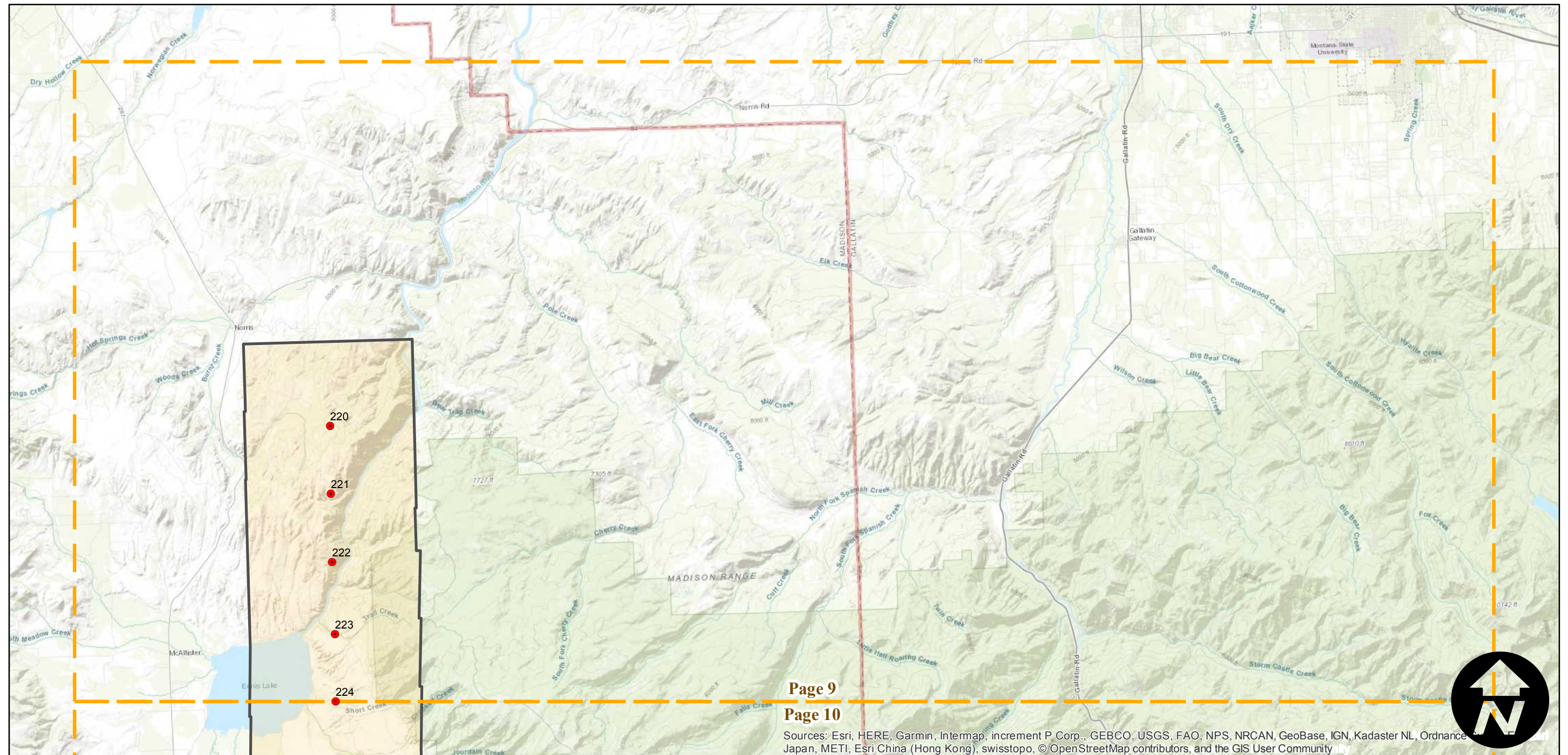
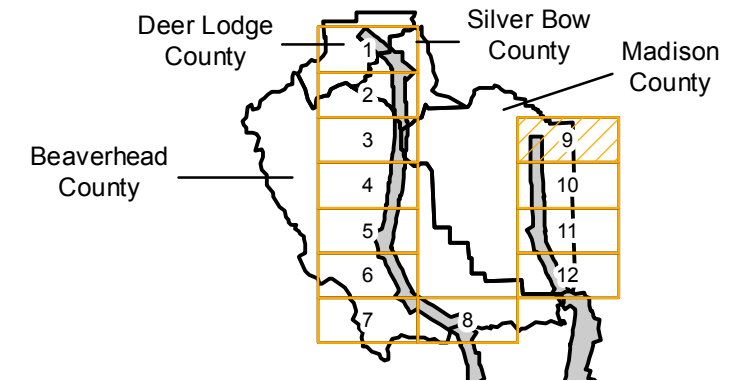
C-6466 (Montana)

Counties: Beaverhead, Deer Lodge, Madison, Silver Bow (Montana)
Flight date(s): 06-10-1940 to 06-14-1940
Scale: 1:31,680
Overlap: 60-90%

Note: Coverage of Blackfoot, Idaho to Norris, Montana and Anaconda, Montana to Grace, Idaho. Includes Ashton, Big Springs, Dell, Ennis Lake, Henrys Lake, Lyon, Melrose, Monida, Shelly, and more. Imagery acquired January 2013. Nitrate negatives scanned, November 2015.

Complete Metadata:
<https://www.library.ucsb.edu/src/airphotos/aerial-photography-information>

FLIGHT LOCATION



Page 9

Page 10

Sources: Esri, HERE, Garmin, Intermap, increment P Corp., GEBCO, USGS, FAO, NPS, NRCAN, GeoBase, IGN, Kadaster NL, Ordnance Survey, Esri China (Hong Kong), Swisstopo, © OpenStreetMap contributors, and the GIS User Community

0 3 6 12 Miles

Index to Aerial Photography
Page 9 of 12

Scale of this index: 1:175,000

C-6466 (Montana)

Counties: Beaverhead, Deer Lodge, Madison, Silver Bow (Montana)

Flight date(s): 06-10-1940 to 06-14-1940

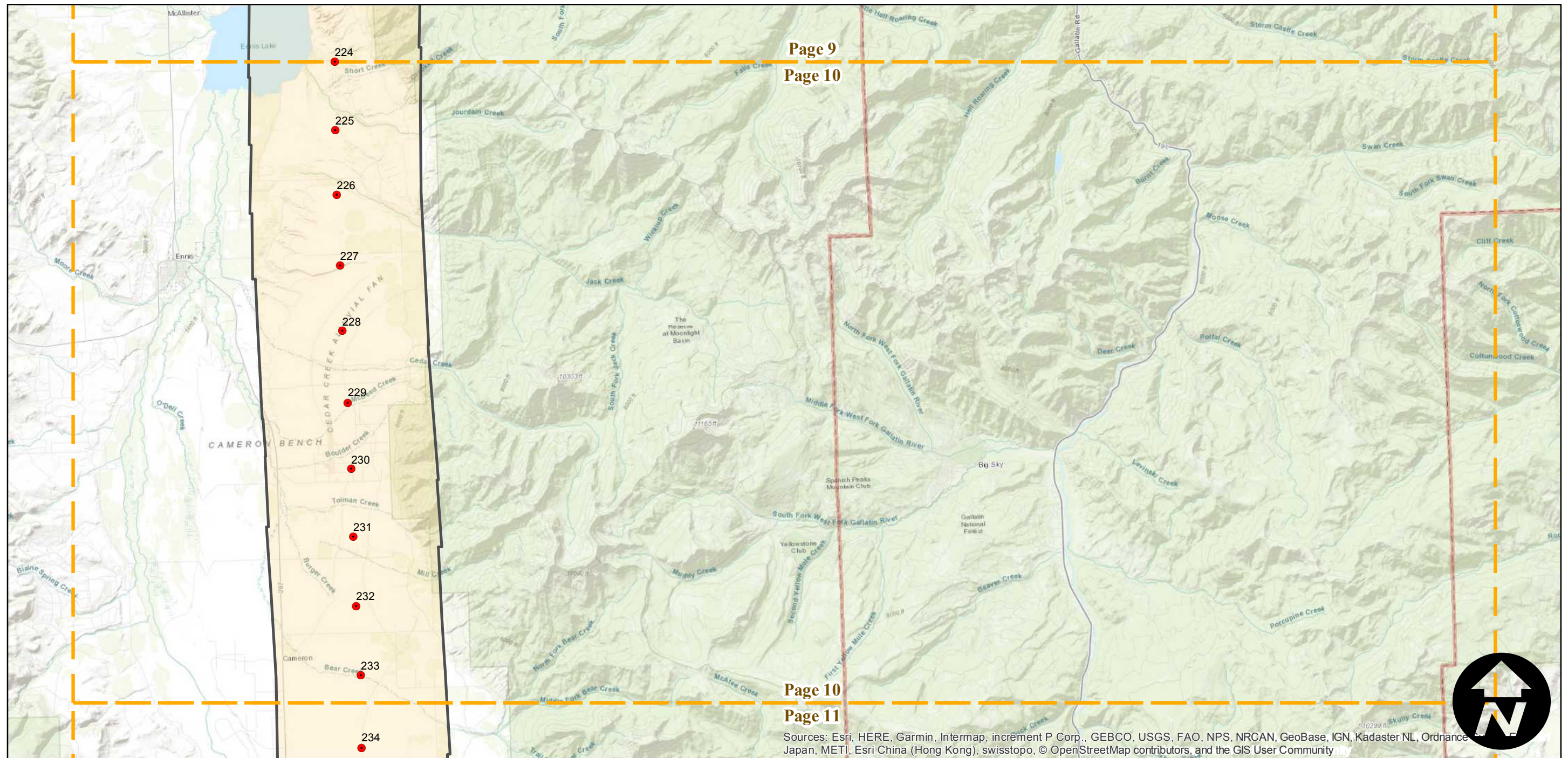
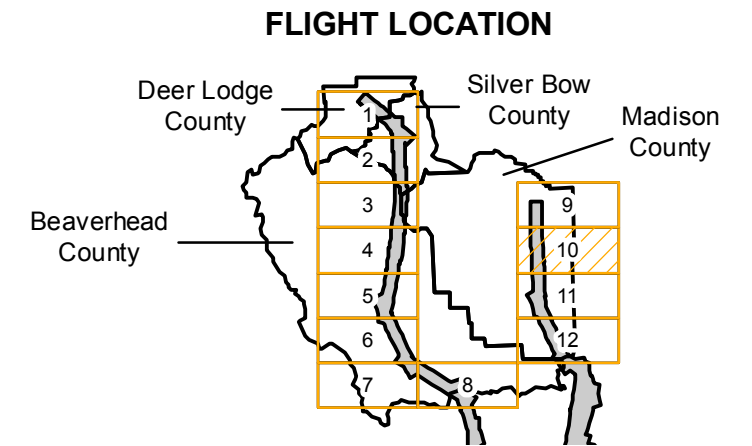
Scale: 1:31,680

Overlap: 60-90%

Complete Metadata:

<https://www.library.ucsb.edu/src/airphotos/aerial-photography-information>

Note: Coverage of Blackfoot, Idaho to Norris, Montana and Anaconda, Montana to Grace, Idaho. Includes Ashton, Big Springs, Dell, Ennis Lake, Henrys Lake, Lyon, Melrose, Monida, Shelly, and more. Imagery acquired January 2013. Nitrate negatives scanned, November 2015.



C-6466 (Montana)

Counties: Beaverhead, Deer Lodge, Madison, Silver Bow (Montana)

Flight date(s): 06-10-1940 to 06-14-1940

Scale: 1:31,680

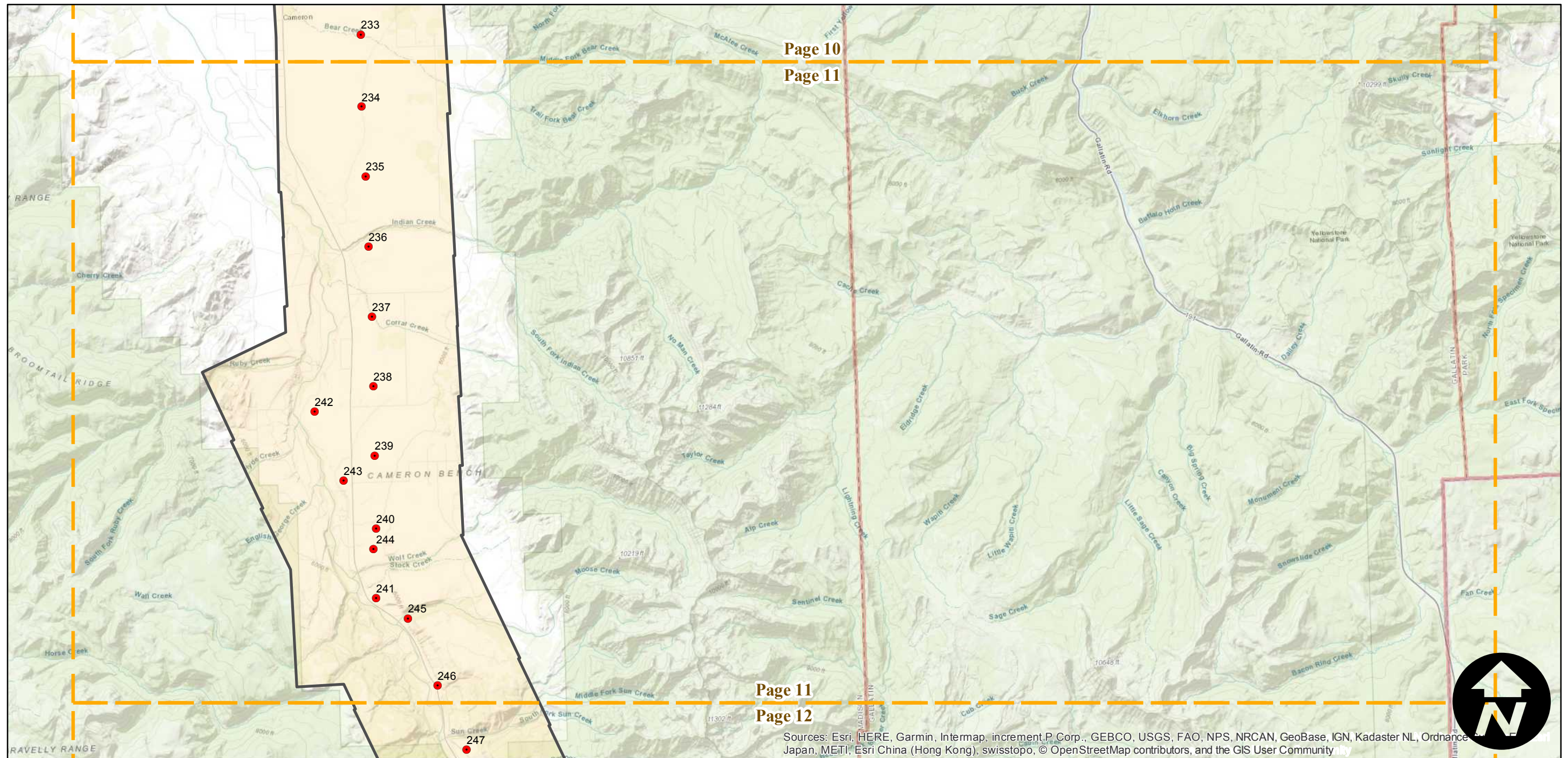
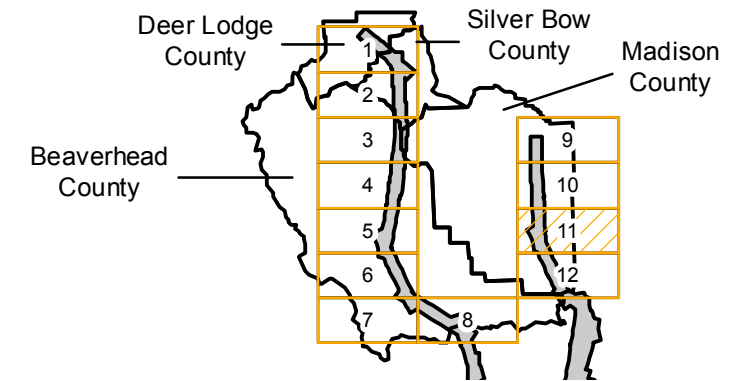
Overlap: 60-90%

Complete Metadata:

<https://www.library.ucsb.edu/src/airphotos/aerial-photography-information>

Note: Coverage of Blackfoot, Idaho to Norris, Montana and Anaconda, Montana to Grace, Idaho. Includes Ashton, Big Springs, Dell, Ennis Lake, Henrys Lake, Lyon, Melrose, Monida, Shelly, and more. Imagery acquired January 2013. Nitrate negatives scanned, November 2015.

FLIGHT LOCATION



C-6466 (Montana)

Counties: Beaverhead, Deer Lodge, Madison, Silver Bow (Montana)

Flight date(s): 06-10-1940 to 06-14-1940

Scale: 1:31,680

Overlap: 60-90%

Complete Metadata:

<https://www.library.ucsb.edu/src/airphotos/aerial-photography-information>

Note: Coverage of Blackfoot, Idaho to Norris, Montana and Anaconda, Montana to Grace, Idaho. Includes Ashton, Big Springs, Dell, Ennis Lake, Henrys Lake, Lyon, Melrose, Monida, Shelly, and more. Imagery acquired January 2013. Nitrate negatives scanned, November 2015.

