

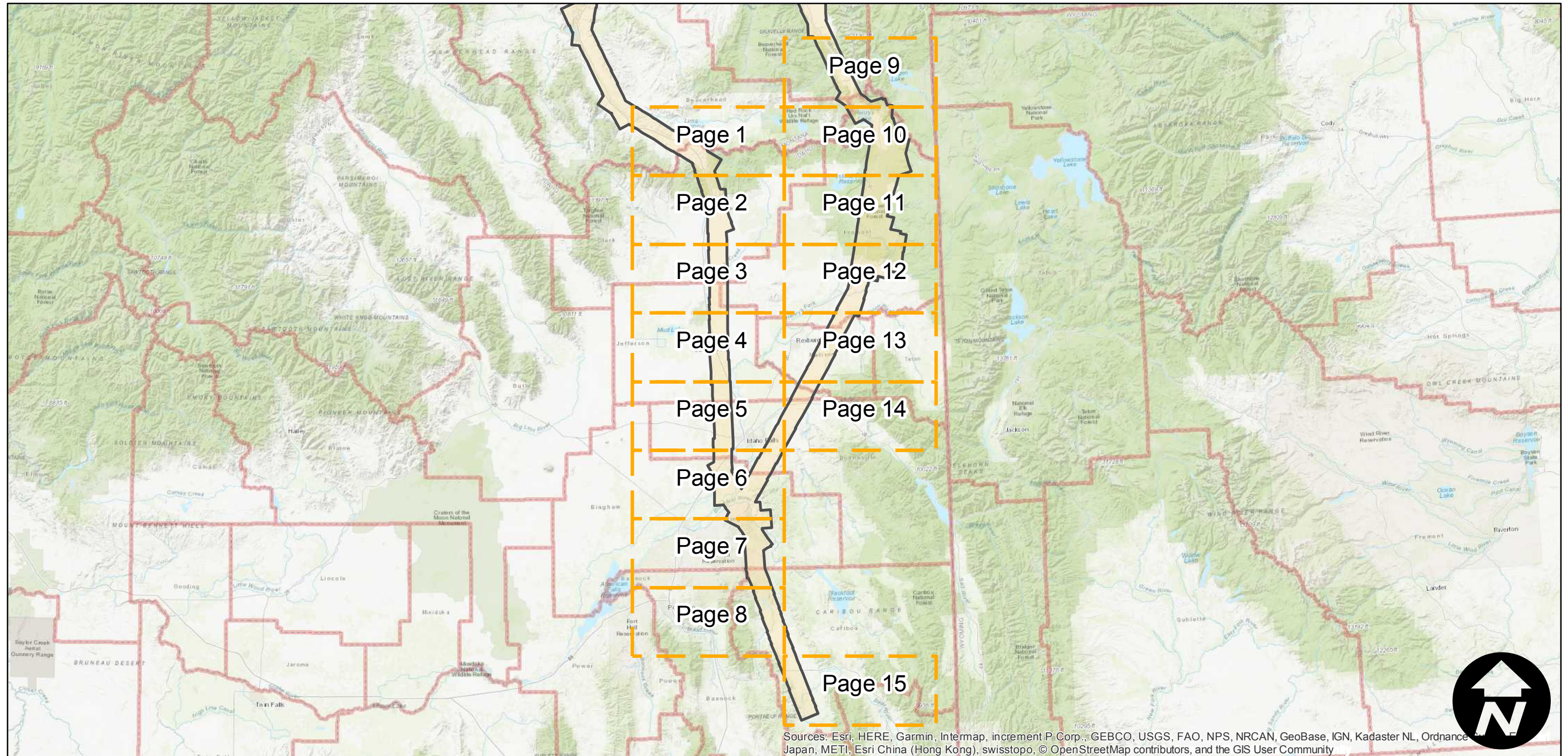
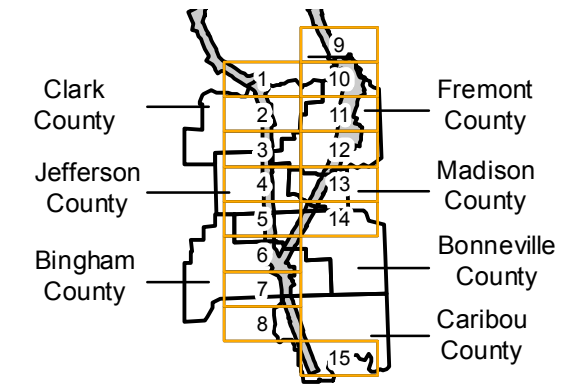
C-6466 (Idaho)

Counties: Bingham, Bonneville, Caribou, Clark, Fremont, Jefferson, Madison (Idaho)
 Flight date(s): 06-10-1940 to 06-14-1940
 Scale: 1:31,680
 Overlap: 60-90%

Note: Coverage of Blackfoot, Idaho to Norris, Montana and Anaconda, Montana to Grace, Idaho. Includes Ashton, Big Springs, Dell, Ennis Lake, Henrys Lake, Lyon, Melrose, Monida, Shelly, and more. Imagery acquired January 2013. Nitrate negatives scanned, November 2015.

Complete Metadata:
<https://www.library.ucsb.edu/src/airphotos/aerial-photography-information>

FLIGHT LOCATION



Sources: Esri, HERE, Garmin, Intermap, increment P Corp., GEBCO, USGS, FAO, NPS, NRCAN, GeoBase, IGN, Kadaster NL, Ordnance Survey, Esri Japan, METI, Esri China (Hong Kong), swisstopo, © OpenStreetMap contributors, and the GIS User Community



Index to Aerial Photography
 Page Key

Scale of this index: 1:1,635,000

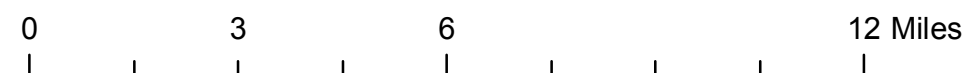
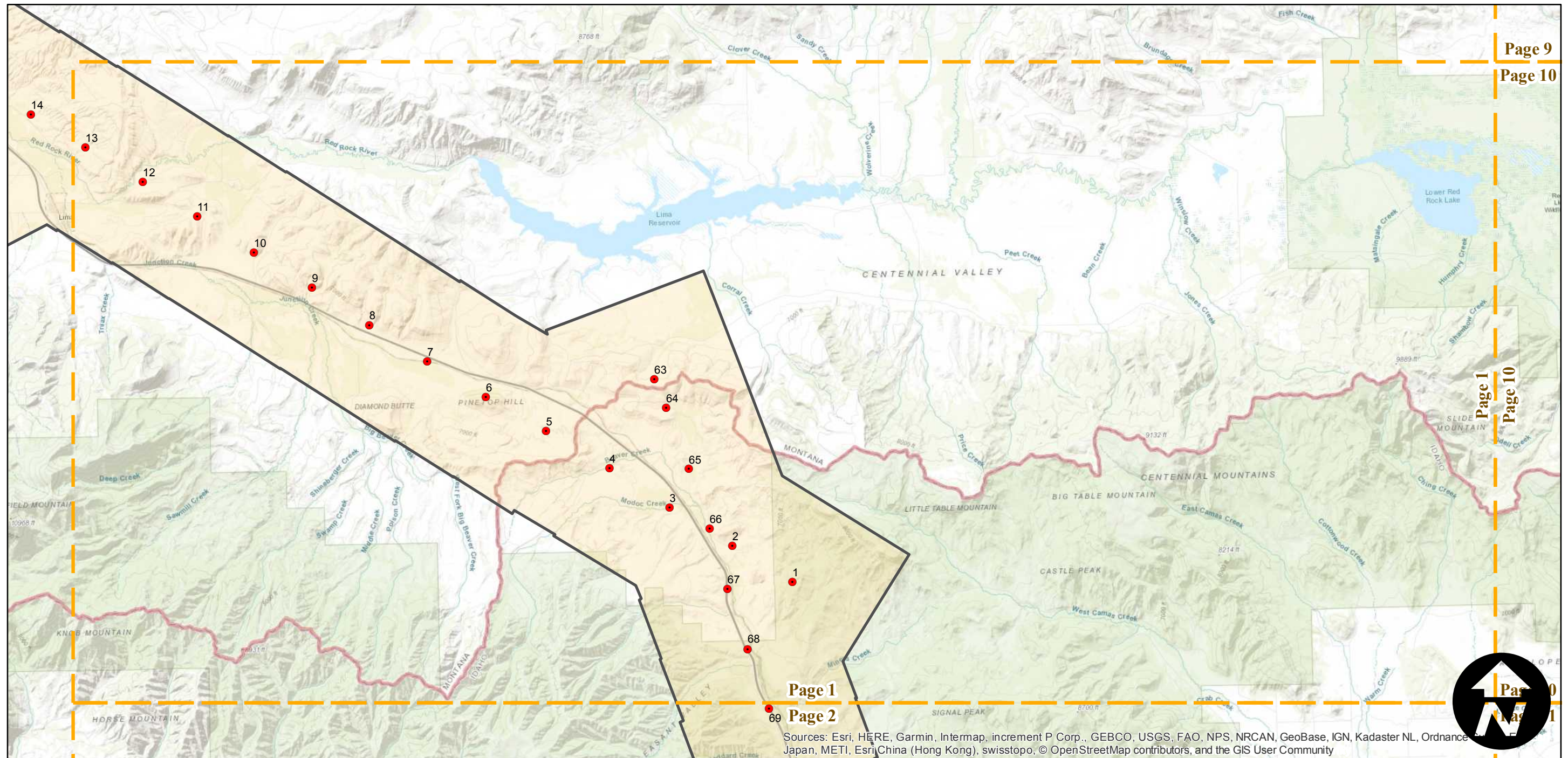
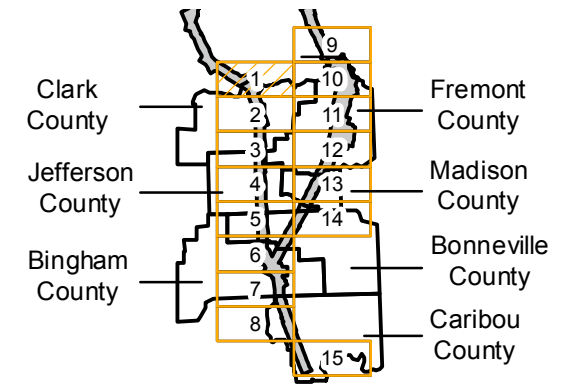
C-6466 (Idaho)

Counties: Bingham, Bonneville, Caribou, Clark, Fremont, Jefferson, Madison (Idaho)
 Flight date(s): 06-10-1940 to 06-14-1940
 Scale: 1:31,680
 Overlap: 60-90%

Note: Coverage of Blackfoot, Idaho to Norris, Montana and Anaconda, Montana to Grace, Idaho. Includes Ashton, Big Springs, Dell, Ennis Lake, Henrys Lake, Lyon, Melrose, Monida, Shelly, and more. Imagery acquired January 2013. Nitrate negatives scanned, November 2015.

Complete Metadata:
<https://www.library.ucsb.edu/src/airphotos/aerial-photography-information>

FLIGHT LOCATION



Page 1
 Page 2

Page 9
 Page 10

Page 1
 Page 10



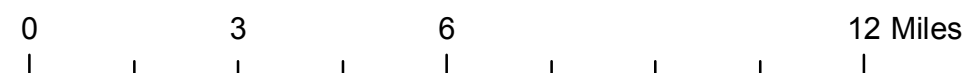
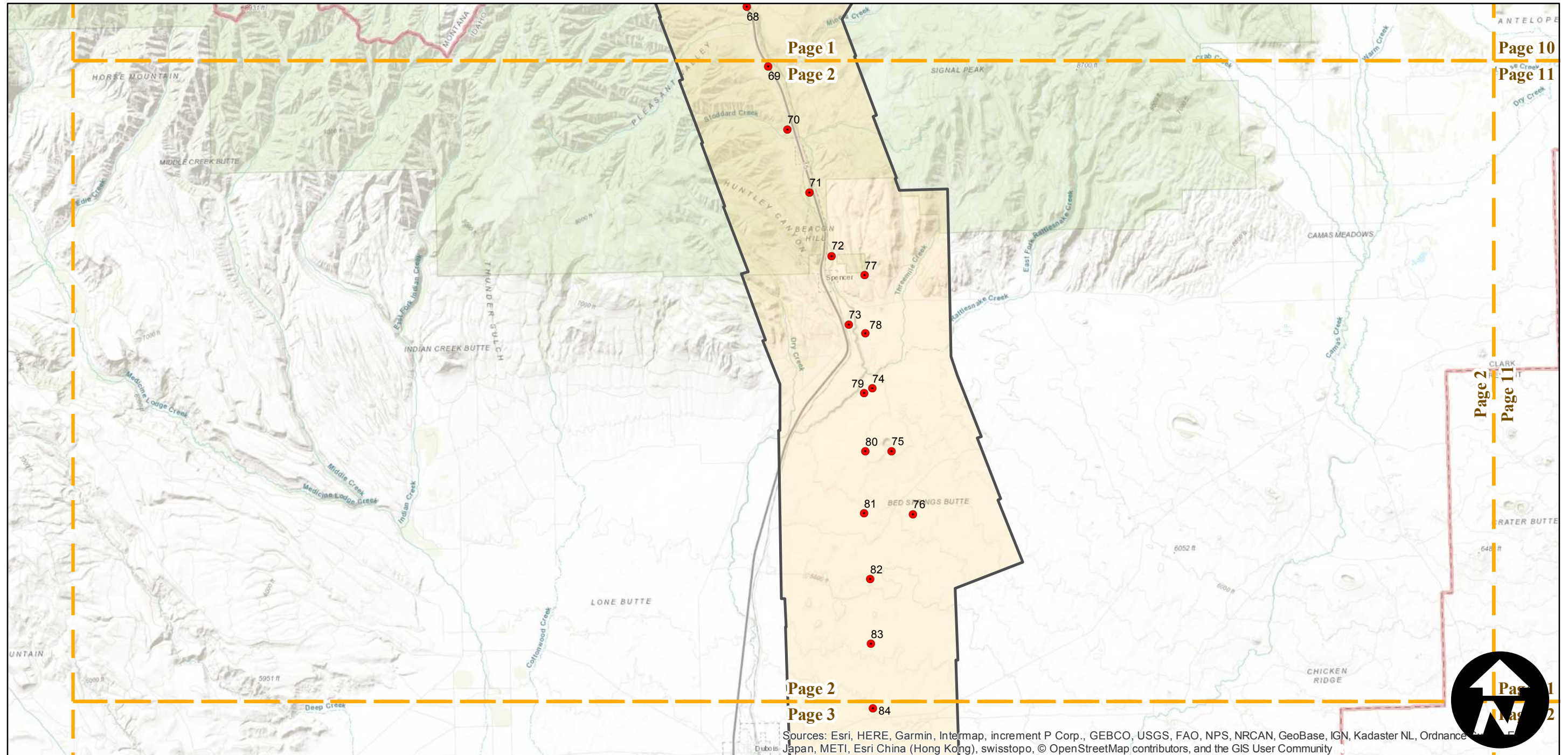
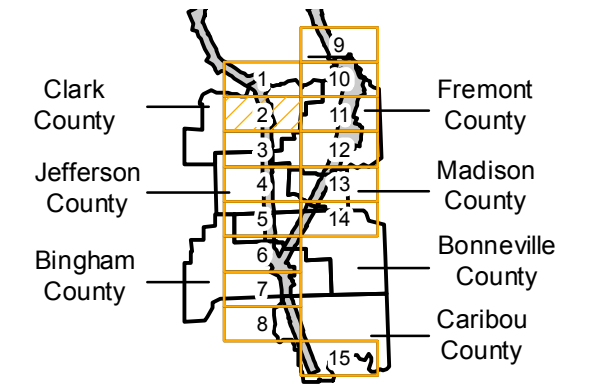
C-6466 (Idaho)

Counties: Bingham, Bonneville, Caribou, Clark, Fremont, Jefferson, Madison (Idaho)
 Flight date(s): 06-10-1940 to 06-14-1940
 Scale: 1:31,680
 Overlap: 60-90%

Note: Coverage of Blackfoot, Idaho to Norris, Montana and Anaconda, Montana to Grace, Idaho. Includes Ashton, Big Springs, Dell, Ennis Lake, Henrys Lake, Lyon, Melrose, Monida, Shelly, and more. Imagery acquired January 2013. Nitrate negatives scanned, November 2015.

Complete Metadata:
<https://www.library.ucsb.edu/src/airphotos/aerial-photography-information>

FLIGHT LOCATION

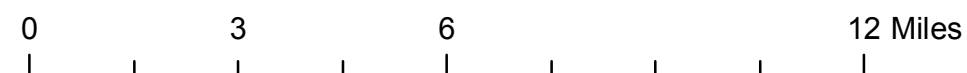
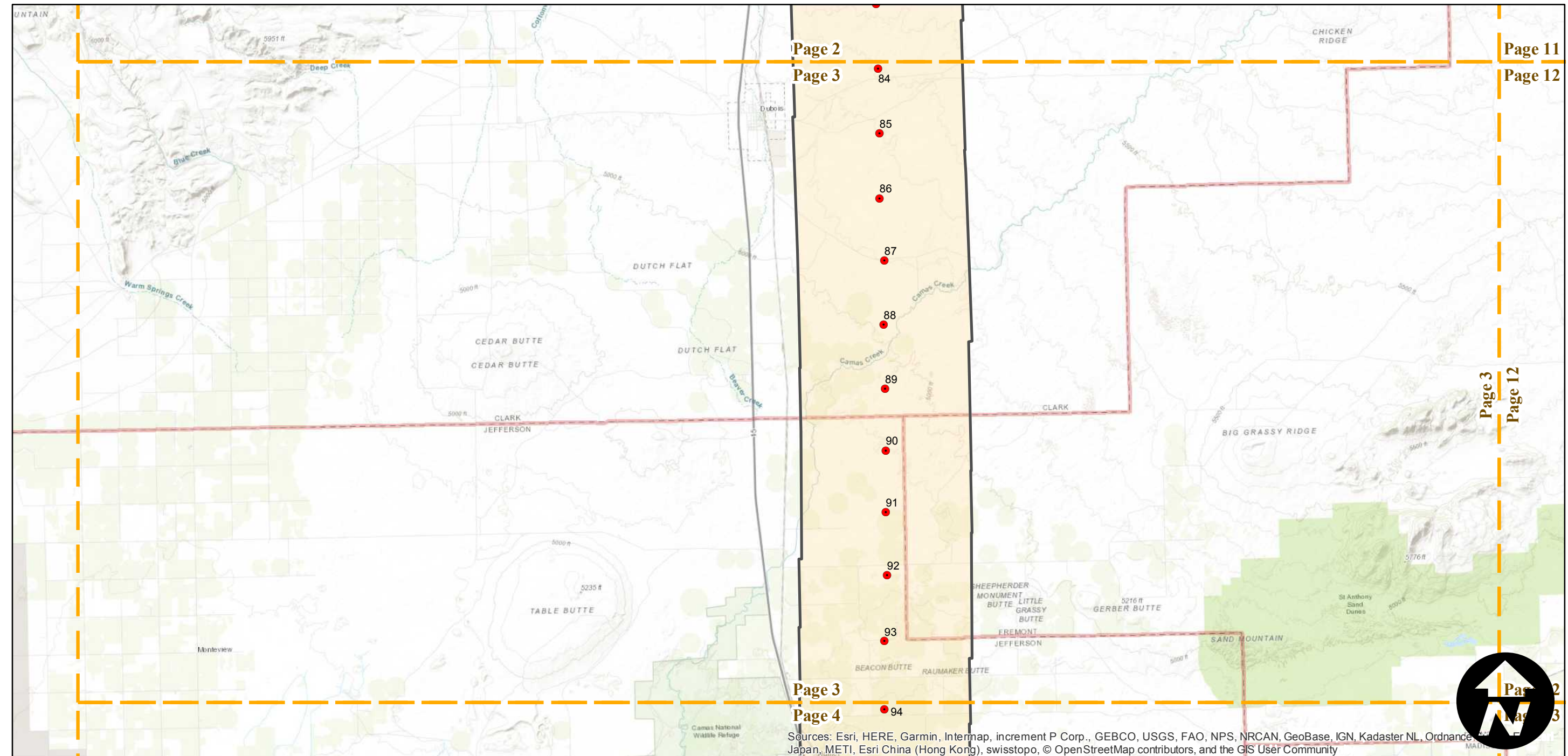
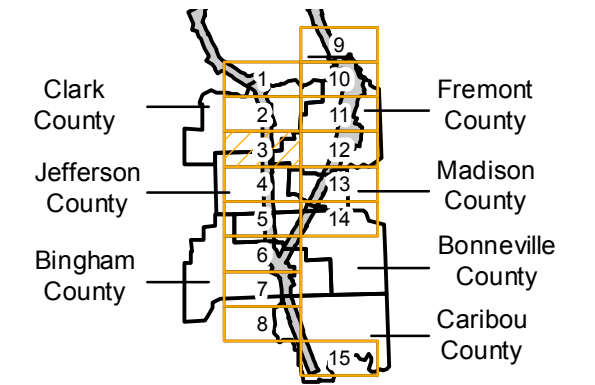


C-6466 (Idaho)

Counties: Bingham, Bonneville, Caribou, Clark, Fremont, Jefferson, Madison (Idaho)
 Flight date(s): 06-10-1940 to 06-14-1940
 Scale: 1:31,680
 Overlap: 60-90%

Note: Coverage of Blackfoot, Idaho to Norris, Montana and Anaconda, Montana to Grace, Idaho. Includes Ashton, Big Springs, Dell, Ennis Lake, Henrys Lake, Lyon, Melrose, Monida, Shelly, and more. Imagery acquired January 2013. Nitrate negatives scanned, November 2015.

FLIGHT LOCATION



Sources: Esri, HERE, Garmin, Intermap, increment P Corp., GEBCO, USGS, FAO, NPS, NRCAN, GeoBase, IGN, Kadaster NL, Ordnance Survey, Esri Japan, METI, Esri China (Hong Kong), swisstopo, © OpenStreetMap contributors, and the GIS User Community

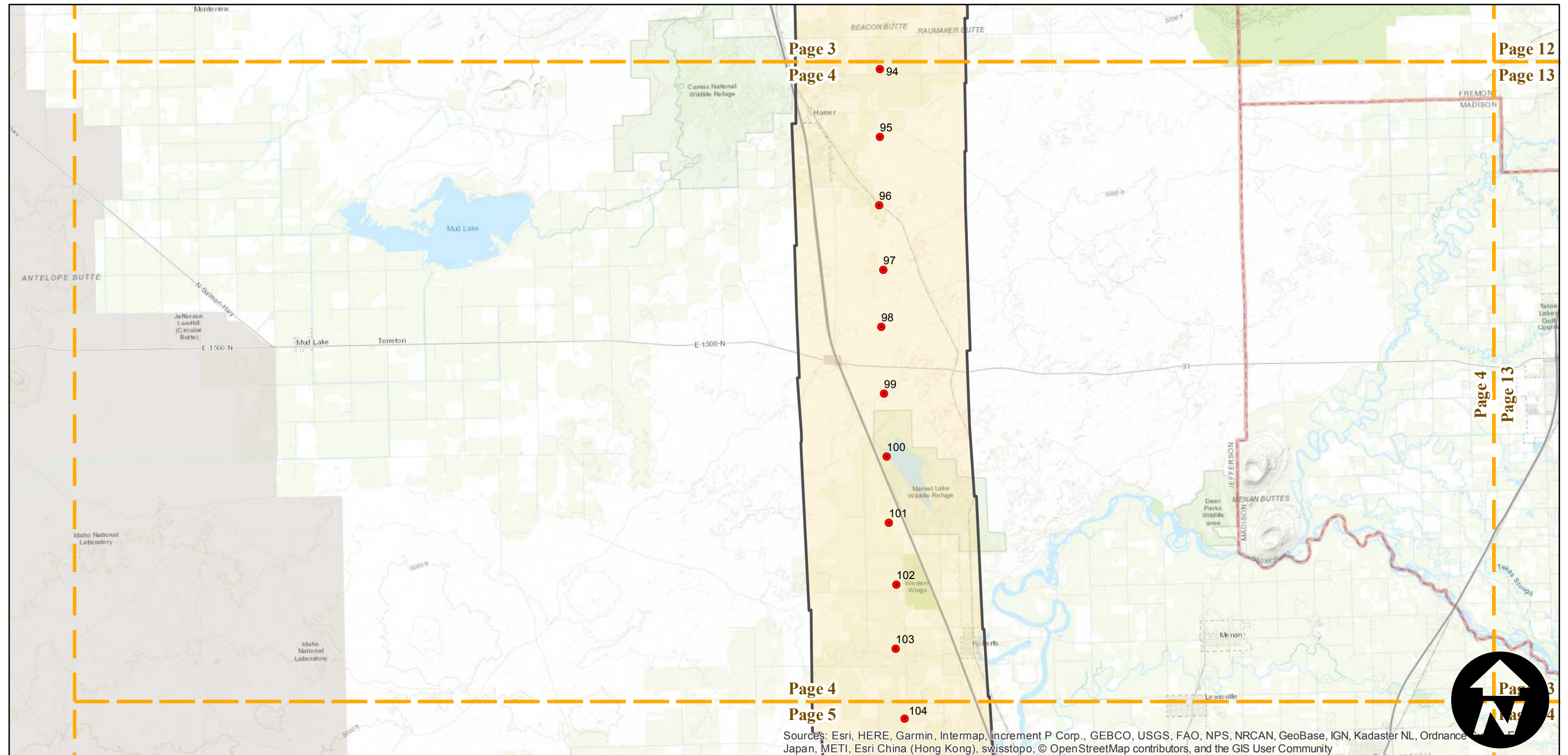
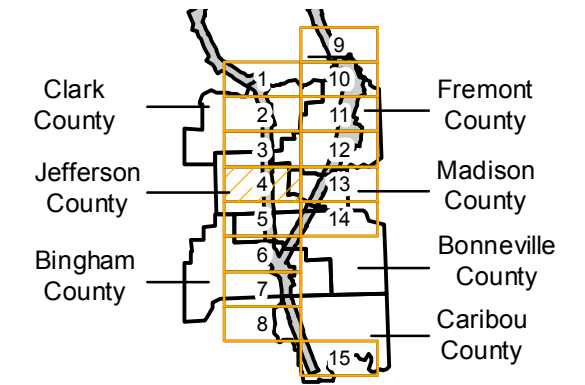
C-6466 (Idaho)

Counties: Bingham, Bonneville, Caribou, Clark, Fremont, Jefferson, Madison (Idaho)
 Flight date(s): 06-10-1940 to 06-14-1940
 Scale: 1:31,680
 Overlap: 60-90%

Note: Coverage of Blackfoot, Idaho to Norris, Montana and Anaconda, Montana to Grace, Idaho. Includes Ashton, Big Springs, Dell, Ennis Lake, Henrys Lake, Lyon, Melrose, Monida, Shelly, and more. Imagery acquired January 2013. Nitrate negatives scanned, November 2015.

Complete Metadata:
<https://www.library.ucsb.edu/src/airphotos/aerial-photography-information>

FLIGHT LOCATION



Sources: Esri, HERE, Garmin, Intermap, increment P Corp., GEBCO, USGS, FAO, NPS, NRCAN, GeoBase, IGN, Kadaster NL, Ordnance Survey, Esri Japan, METI, Esri China (Hong Kong), swisstopo, © OpenStreetMap contributors, and the GIS User Community

0 3 6 12 Miles

Index to Aerial Photography
 Page 4 of 15

Scale of this index: 1:175,000

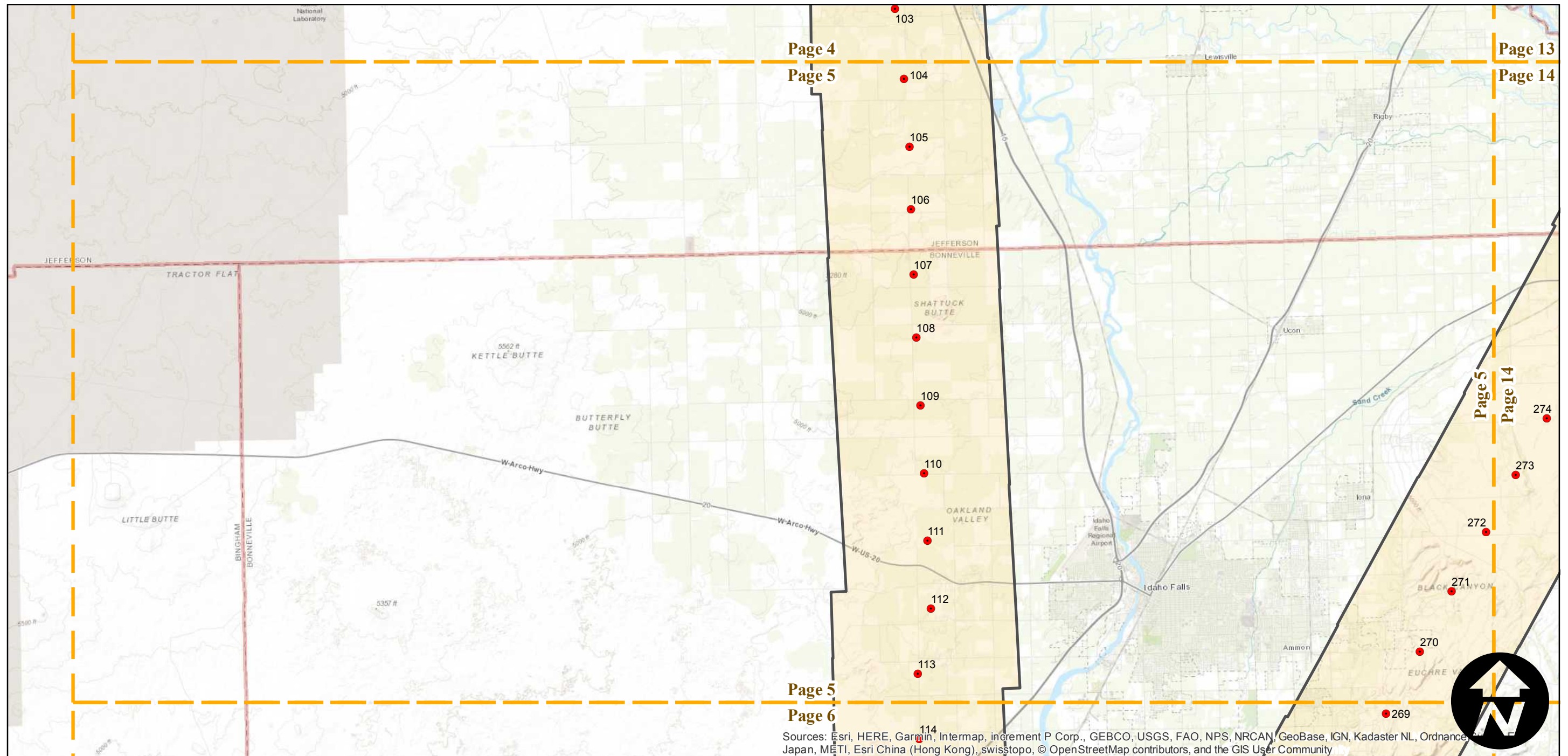
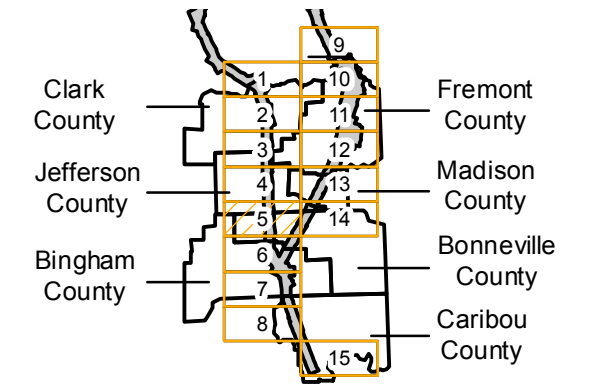
C-6466 (Idaho)

Counties: Bingham, Bonneville, Caribou, Clark, Fremont, Jefferson, Madison (Idaho)
 Flight date(s): 06-10-1940 to 06-14-1940
 Scale: 1:31,680
 Overlap: 60-90%

Note: Coverage of Blackfoot, Idaho to Norris, Montana and Anaconda, Montana to Grace, Idaho. Includes Ashton, Big Springs, Dell, Ennis Lake, Henrys Lake, Lyon, Melrose, Monida, Shelly, and more. Imagery acquired January 2013. Nitrate negatives scanned, November 2015.

Complete Metadata:
<https://www.library.ucsb.edu/src/airphotos/aerial-photography-information>

FLIGHT LOCATION



Sources: Esri, HERE, Garmin, Intermap, increment P Corp., GEBCO, USGS, FAO, NPS, NRCAN, GeoBase, IGN, Kadaster NL, Ordnance Survey, Esri Japan, METI, Esri China (Hong Kong), swisstopo, © OpenStreetMap contributors, and the GIS User Community

0 3 6 12 Miles

Index to Aerial Photography
 Page 5 of 15

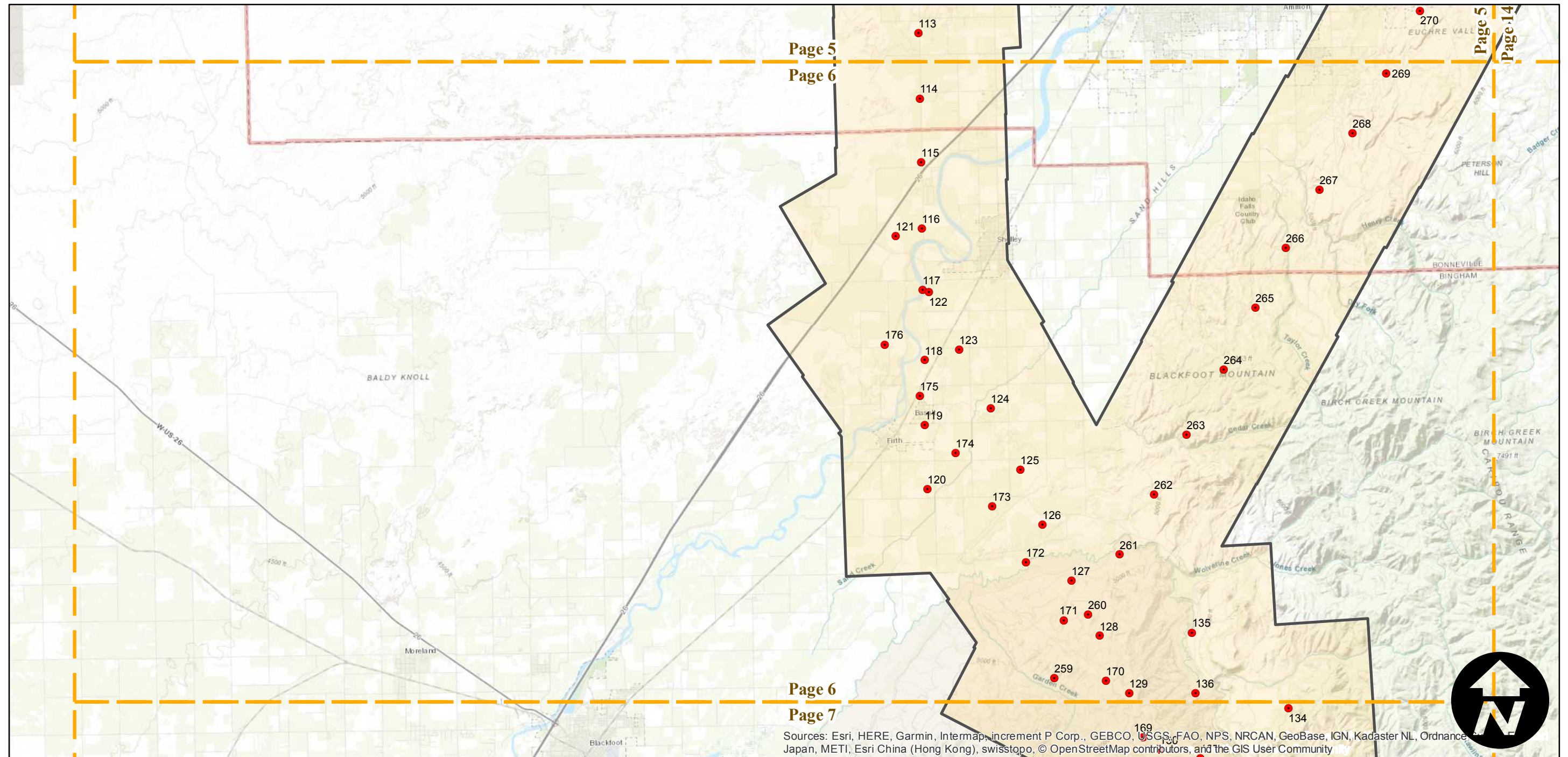
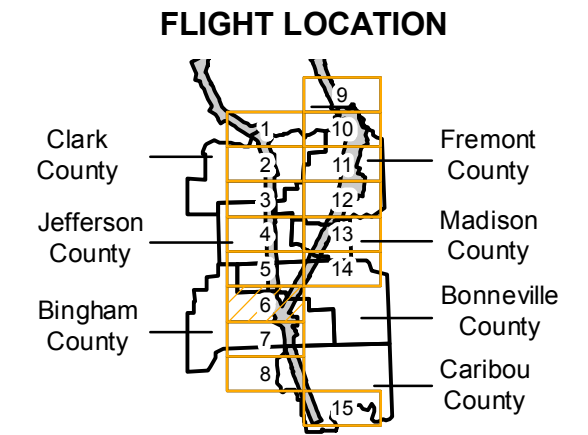
Scale of this index: 1:175,000

C-6466 (Idaho)

Counties: Bingham, Bonneville, Caribou, Clark, Fremont, Jefferson, Madison (Idaho)
 Flight date(s): 06-10-1940 to 06-14-1940
 Scale: 1:31,680
 Overlap: 60-90%

Note: Coverage of Blackfoot, Idaho to Norris, Montana and Anaconda, Montana to Grace, Idaho. Includes Ashton, Big Springs, Dell, Ennis Lake, Henrys Lake, Lyon, Melrose, Monida, Shelly, and more. Imagery acquired January 2013. Nitrate negatives scanned, November 2015.

Complete Metadata:
<https://www.library.ucsb.edu/src/airphotos/aerial-photography-information>



Sources: Esri, HERE, Garmin, Intermap, increment P Corp., GEBCO, USGS, FAO, NPS, NRCAN, GeoBase, IGN, Kadaster NL, Ordnance Survey, Esri China (Hong Kong), Swisstopo, © OpenStreetMap contributors, and the GIS User Community

0 3 6 12 Miles

Index to Aerial Photography
 Page 6 of 15

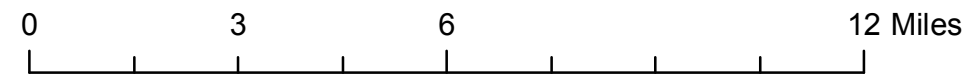
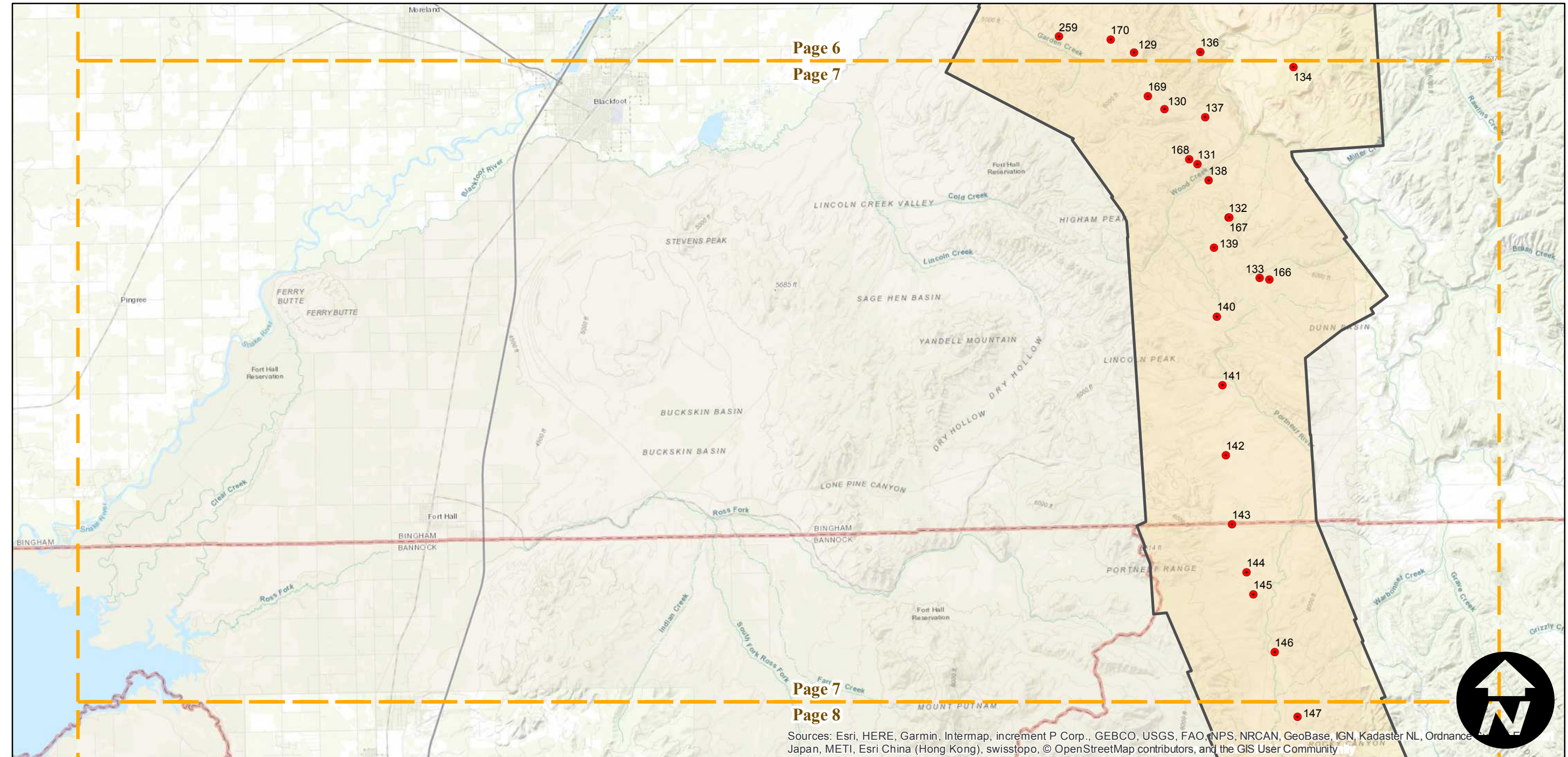
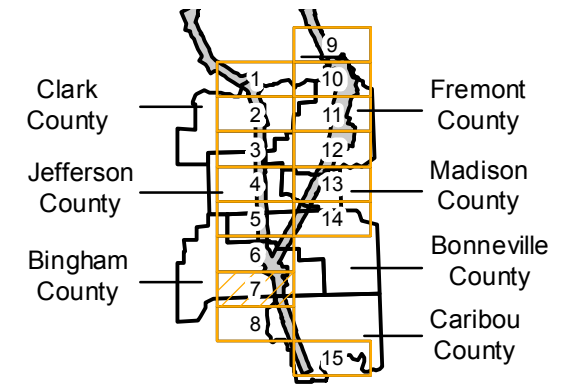
Scale of this index: 1:175,000

C-6466 (Idaho)

Counties: Bingham, Bonneville, Caribou, Clark, Fremont, Jefferson, Madison (Idaho)
 Flight date(s): 06-10-1940 to 06-14-1940
 Scale: 1:31,680
 Overlap: 60-90%

Note: Coverage of Blackfoot, Idaho to Norris, Montana and Anaconda, Montana to Grace, Idaho. Includes Ashton, Big Springs, Dell, Ennis Lake, Henrys Lake, Lyon, Melrose, Monida, Shelly, and more. Imagery acquired January 2013. Nitrate negatives scanned, November 2015.

FLIGHT LOCATION



Sources: Esri, HERE, Garmin, Intermap, increment P Corp., GEBCO, USGS, FAO, NPS, NRCAN, GeoBase, IGN, Kadaster NL, Ordnance Survey, Esri China (Hong Kong), swisstopo, © OpenStreetMap contributors, and the GIS User Community

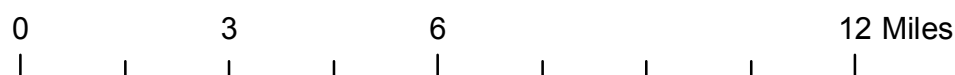
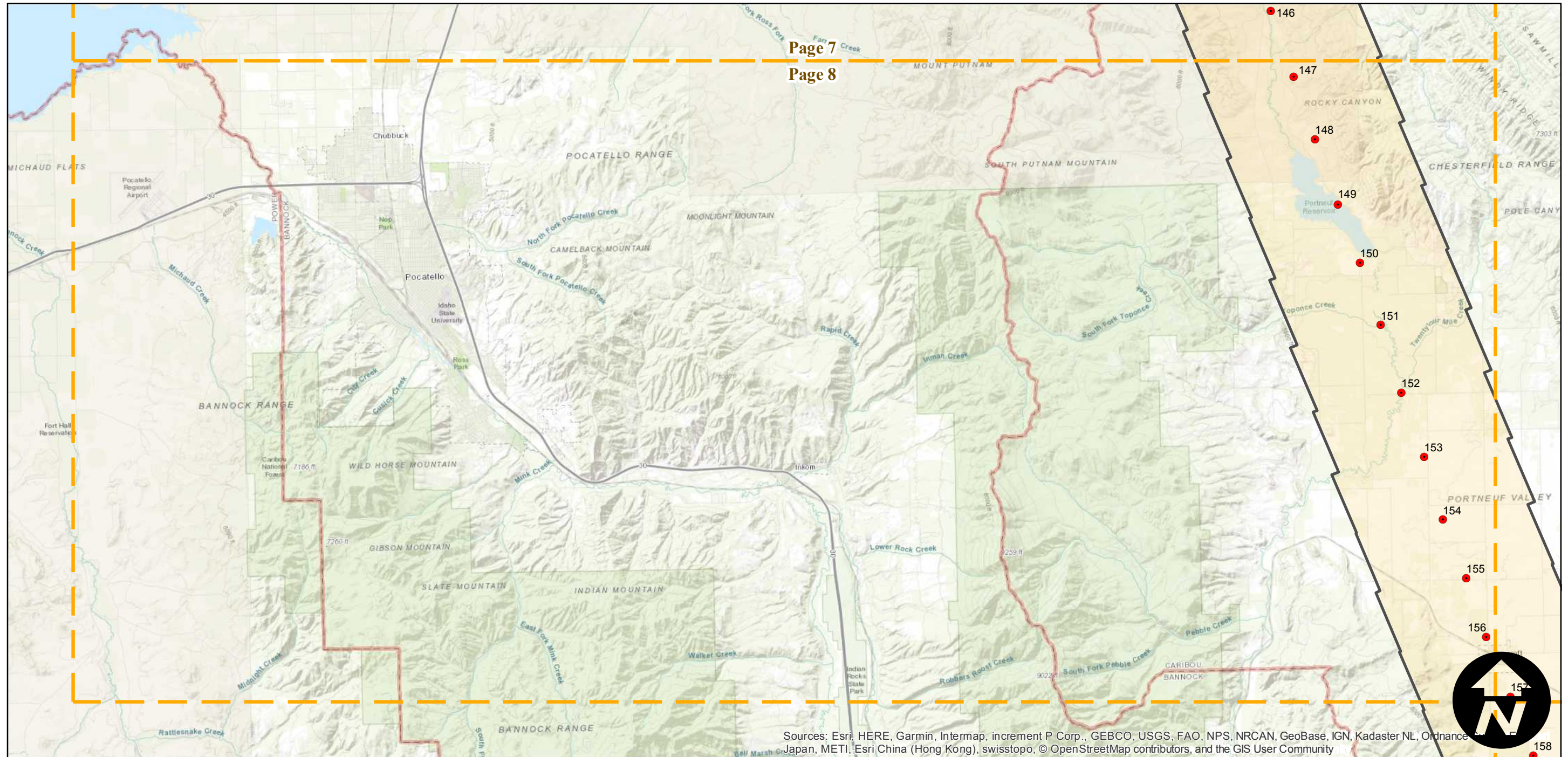
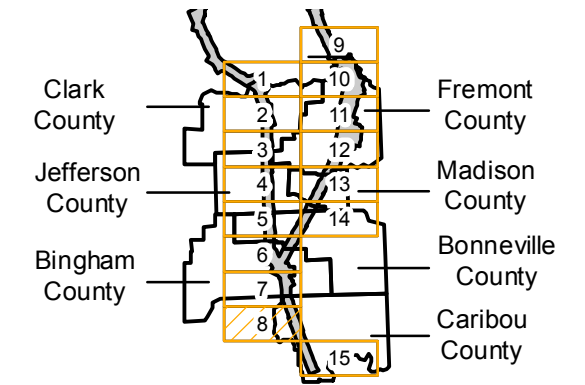
C-6466 (Idaho)

Counties: Bingham, Bonneville, Caribou, Clark, Fremont, Jefferson, Madison (Idaho)
 Flight date(s): 06-10-1940 to 06-14-1940
 Scale: 1:31,680
 Overlap: 60-90%

Note: Coverage of Blackfoot, Idaho to Norris, Montana and Anaconda, Montana to Grace, Idaho. Includes Ashton, Big Springs, Dell, Ennis Lake, Henrys Lake, Lyon, Melrose, Monida, Shelly, and more. Imagery acquired January 2013. Nitrate negatives scanned, November 2015.

Complete Metadata:
<https://www.library.ucsb.edu/src/airphotos/aerial-photography-information>

FLIGHT LOCATION

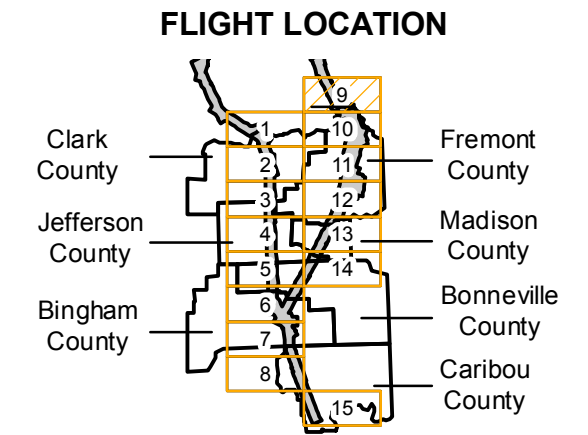


Sources: Esri, HERE, Garmin, Intermap, increment P Corp., GEBCO, USGS, FAO, NPS, NRCAN, GeoBase, IGN, Kadaster NL, Ordnance Survey, Esri Japan, METI, Esri China (Hong Kong), swisstopo, © OpenStreetMap contributors, and the GIS User Community

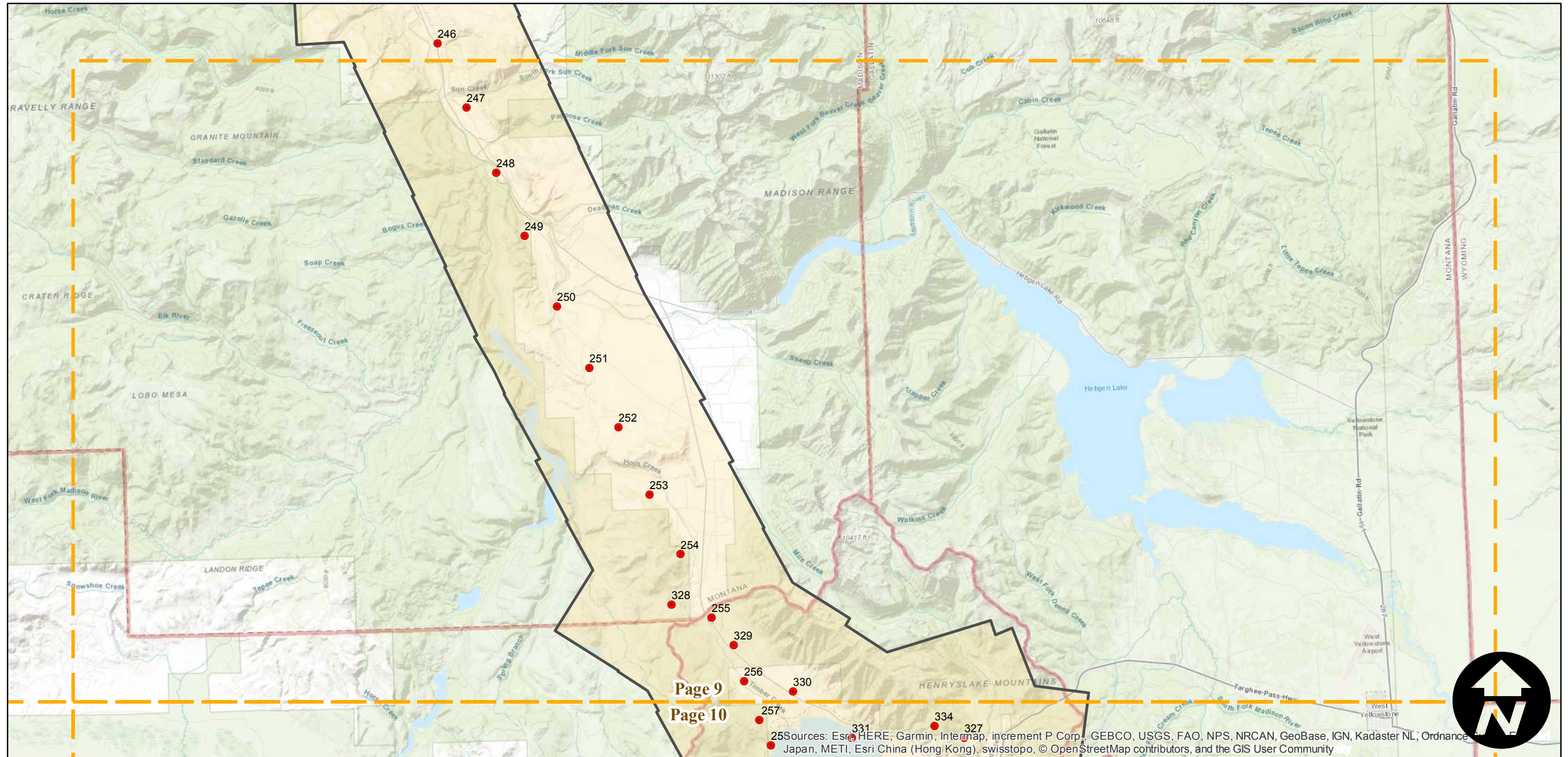
C-6466 (Idaho)

Counties: Bingham, Bonneville, Caribou, Clark, Fremont, Jefferson, Madison (Idaho)
 Flight date(s): 06-10-1940 to 06-14-1940
 Scale: 1:31,680
 Overlap: 60-90%

Note: Coverage of Blackfoot, Idaho to Norris, Montana and Anaconda, Montana to Grace, Idaho. Includes Ashton, Big Springs, Dell, Ennis Lake, Henrys Lake, Lyon, Melrose, Monida, Shelly, and more. Imagery acquired January 2013. Nitrate negatives scanned, November 2015.



Complete Metadata:
<https://www.library.ucsb.edu/src/airphotos/aerial-photography-information>



0 3 6 12 Miles

Index to Aerial Photography
 Page 9 of 15

Scale of this index: 1:175,000

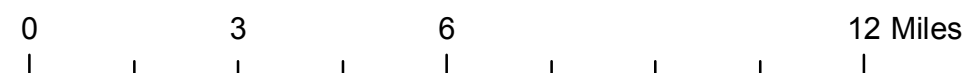
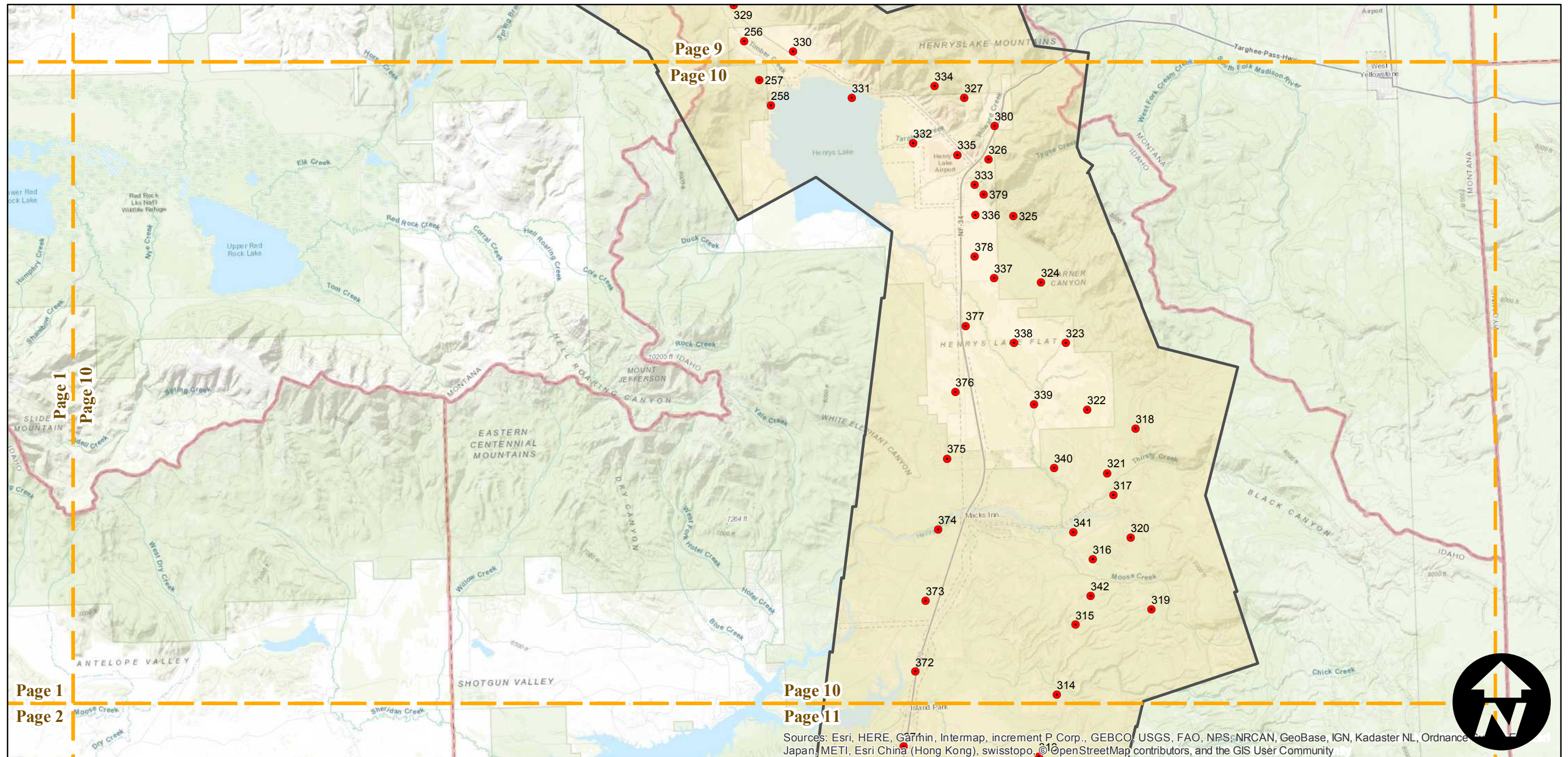
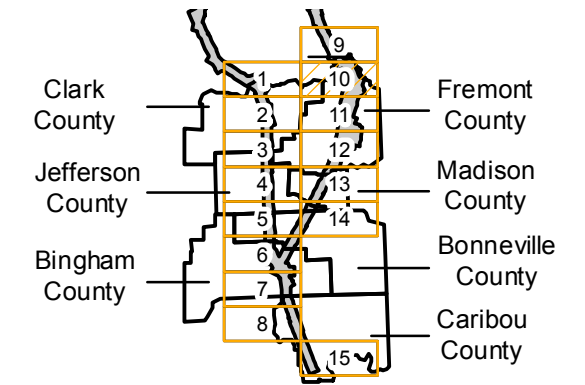
C-6466 (Idaho)

Counties: Bingham, Bonneville, Caribou, Clark, Fremont, Jefferson, Madison (Idaho)
 Flight date(s): 06-10-1940 to 06-14-1940
 Scale: 1:31,680
 Overlap: 60-90%

Note: Coverage of Blackfoot, Idaho to Norris, Montana and Anaconda, Montana to Grace, Idaho. Includes Ashton, Big Springs, Dell, Ennis Lake, Henrys Lake, Lyon, Melrose, Monida, Shelly, and more. Imagery acquired January 2013. Nitrate negatives scanned, November 2015.

Complete Metadata:
<https://www.library.ucsb.edu/src/airphotos/aerial-photography-information>

FLIGHT LOCATION



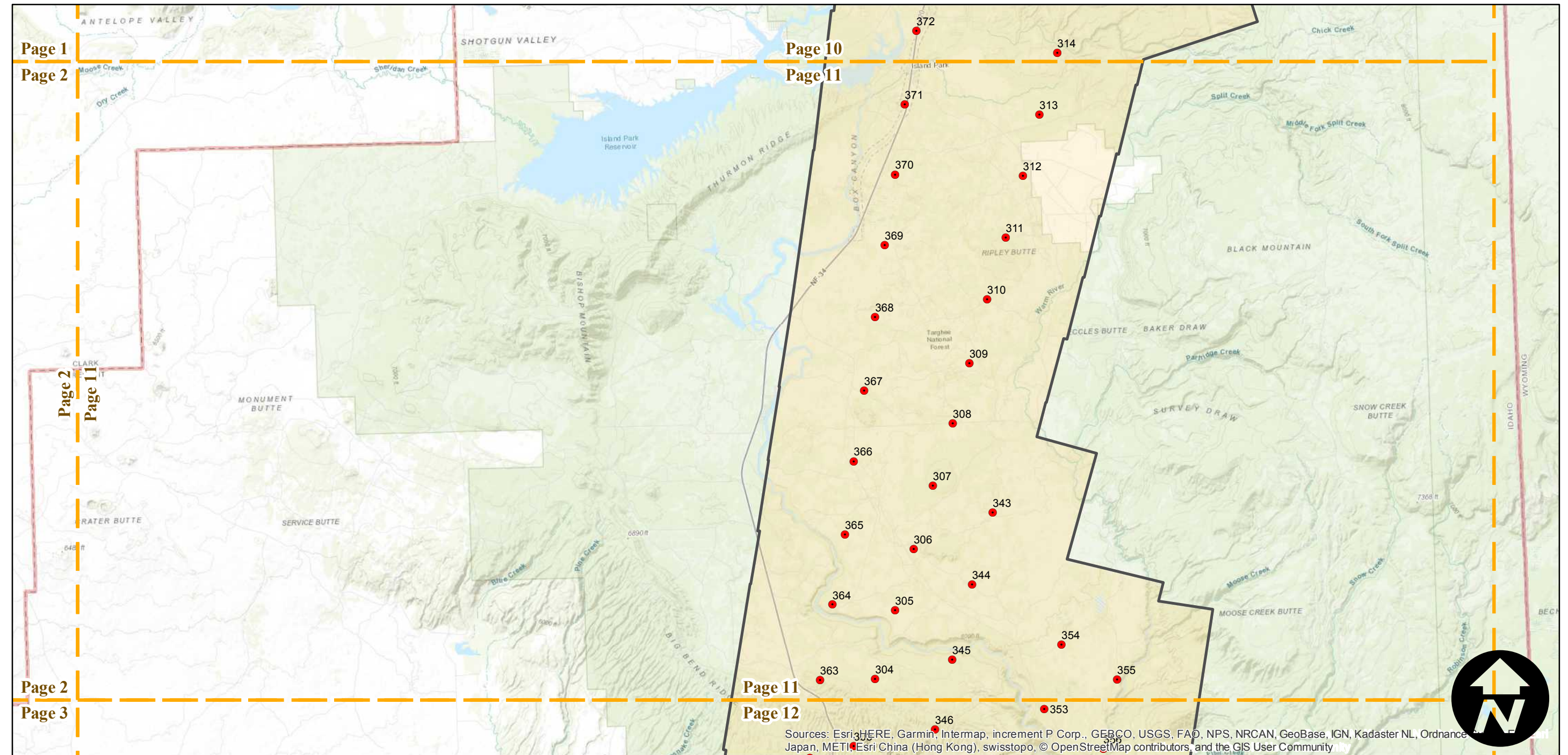
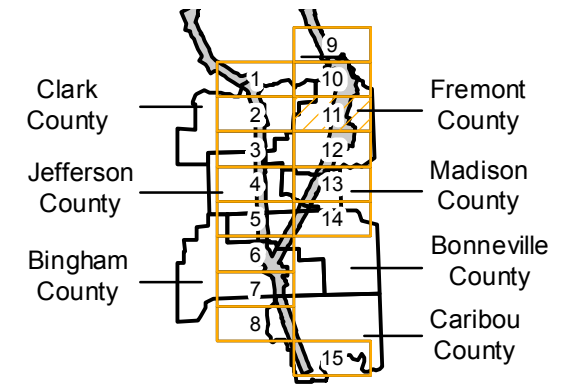
Sources: Esri, HERE, Garmin, Intermap, increment P Corp., GEBCO, USGS, FAO, NPS, NRCAN, GeoBase, IGN, Kadaster NL, Ordnance Survey, Esri China (Hong Kong), Swisstopo, ©OpenStreetMap contributors, and the GIS User Community

C-6466 (Idaho)

Counties: Bingham, Bonneville, Caribou, Clark, Fremont, Jefferson, Madison (Idaho)
 Flight date(s): 06-10-1940 to 06-14-1940
 Scale: 1:31,680
 Overlap: 60-90%

Note: Coverage of Blackfoot, Idaho to Norris, Montana and Anaconda, Montana to Grace, Idaho. Includes Ashton, Big Springs, Dell, Ennis Lake, Henrys Lake, Lyon, Melrose, Monida, Shelly, and more. Imagery acquired January 2013. Nitrate negatives scanned, November 2015.

FLIGHT LOCATION



Sources: Esri, HERE, Garmin, Intermap, increment P Corp., GEBCO, USGS, FAO, NPS, NRCAN, GeoBase, IGN, Kadaster NL, Ordnance Survey, Esri, METI, Esri China (Hong Kong), swisstopo, © OpenStreetMap contributors, and the GIS User Community

0 3 6 12 Miles

Index to Aerial Photography
 Page 11 of 15

Scale of this index: 1:175,000

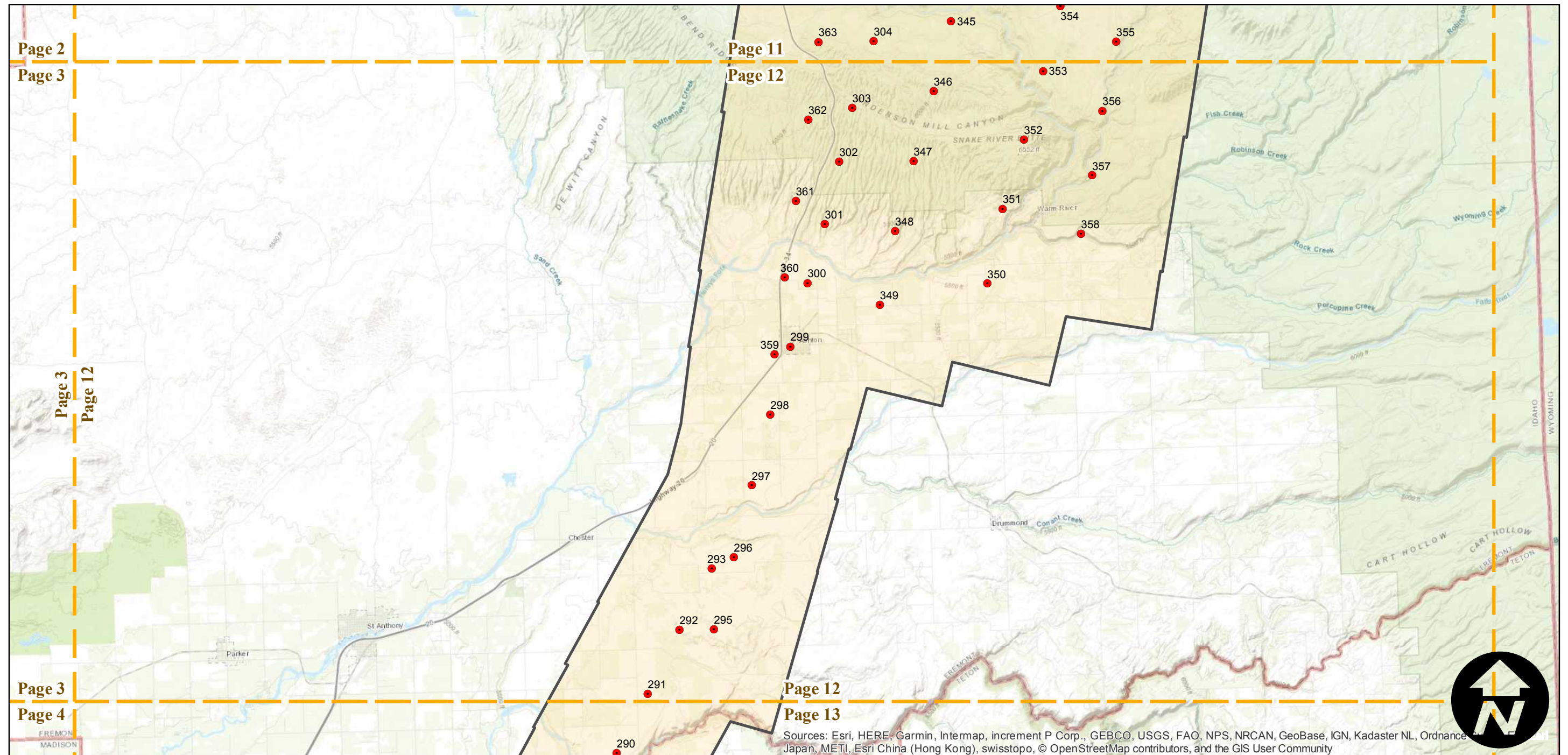
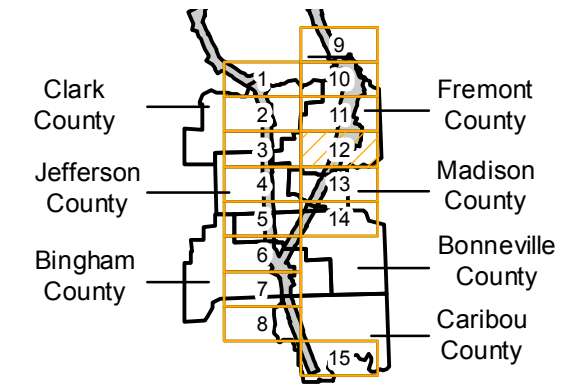
C-6466 (Idaho)

Counties: Bingham, Bonneville, Caribou, Clark, Fremont, Jefferson, Madison (Idaho)
 Flight date(s): 06-10-1940 to 06-14-1940
 Scale: 1:31,680
 Overlap: 60-90%

Note: Coverage of Blackfoot, Idaho to Norris, Montana and Anaconda, Montana to Grace, Idaho. Includes Ashton, Big Springs, Dell, Ennis Lake, Henrys Lake, Lyon, Melrose, Monida, Shelly, and more. Imagery acquired January 2013. Nitrate negatives scanned, November 2015.

Complete Metadata:
<https://www.library.ucsb.edu/src/airphotos/aerial-photography-information>

FLIGHT LOCATION



Sources: Esri, HERE, Garmin, Intermap, increment P Corp., GEBCO, USGS, FAO, NPS, NRCAN, GeoBase, IGN, Kadaster NL, Ordnance Survey, Esri Japan, METI, Esri China (Hong Kong), swisstopo, © OpenStreetMap contributors, and the GIS User Community

0 3 6 12 Miles

Index to Aerial Photography
 Page 12 of 15

Scale of this index: 1:175,000

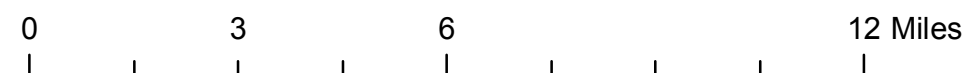
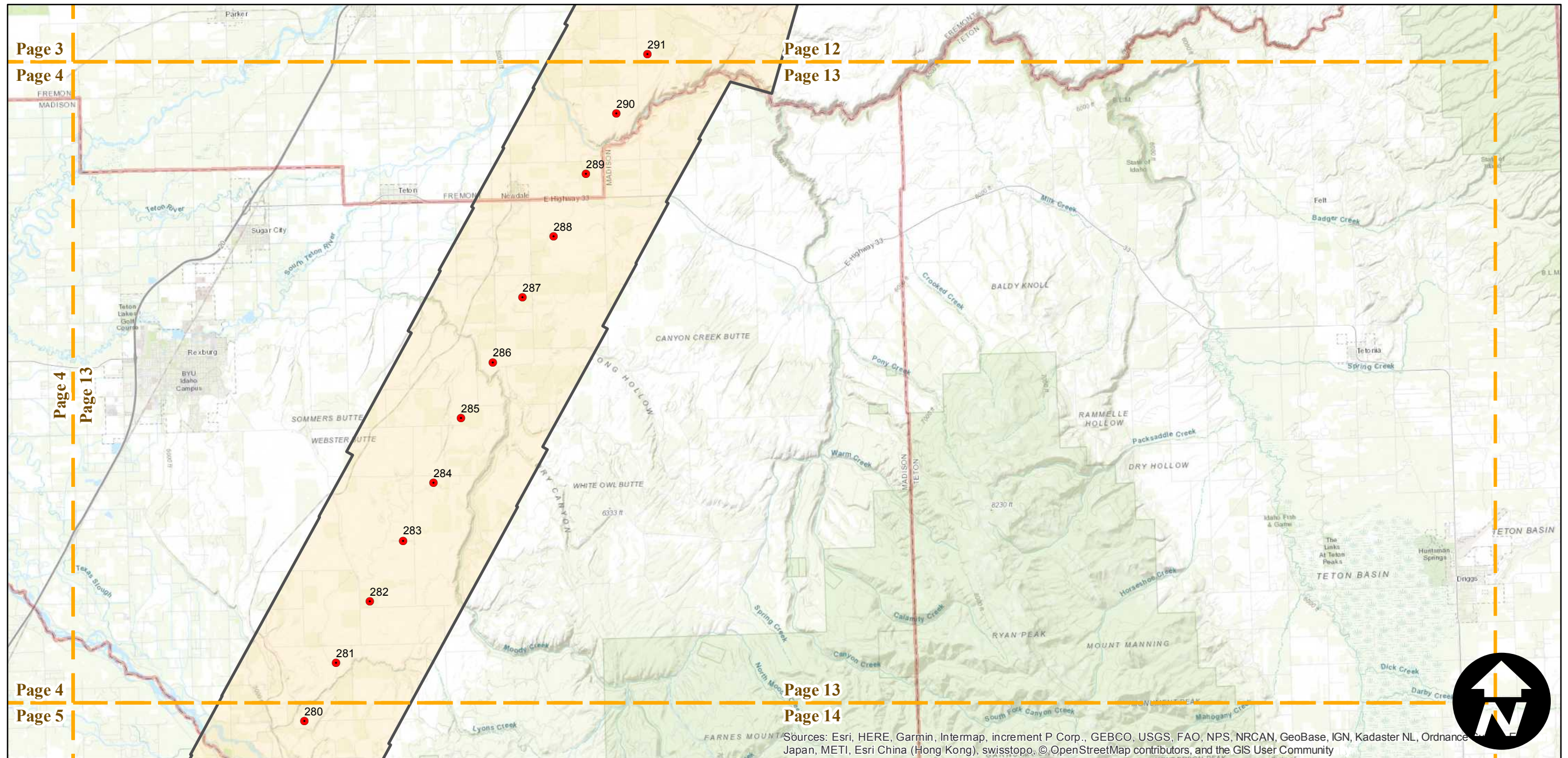
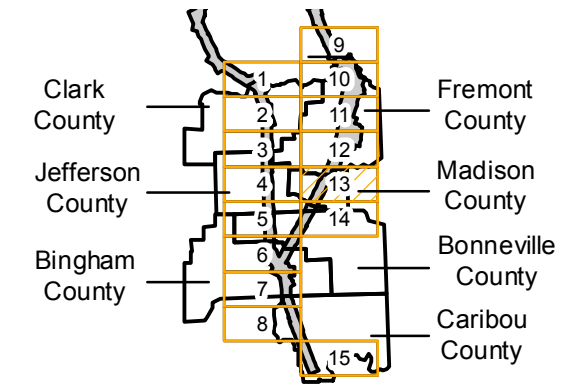
C-6466 (Idaho)

Counties: Bingham, Bonneville, Caribou, Clark, Fremont, Jefferson, Madison (Idaho)
 Flight date(s): 06-10-1940 to 06-14-1940
 Scale: 1:31,680
 Overlap: 60-90%

Note: Coverage of Blackfoot, Idaho to Norris, Montana and Anaconda, Montana to Grace, Idaho. Includes Ashton, Big Springs, Dell, Ennis Lake, Henrys Lake, Lyon, Melrose, Monida, Shelly, and more. Imagery acquired January 2013. Nitrate negatives scanned, November 2015.

Complete Metadata:
<https://www.library.ucsb.edu/src/airphotos/aerial-photography-information>

FLIGHT LOCATION



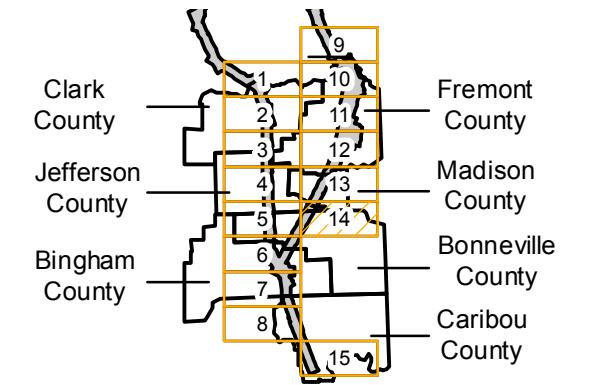
Sources: Esri, HERE, Garmin, Intermap, increment P Corp., GEBCO, USGS, FAO, NPS, NRCAN, GeoBase, IGN, Kadaster NL, Ordnance Survey, Esri Japan, METI, Esri China (Hong Kong), swisstopo, © OpenStreetMap contributors, and the GIS User Community

C-6466 (Idaho)

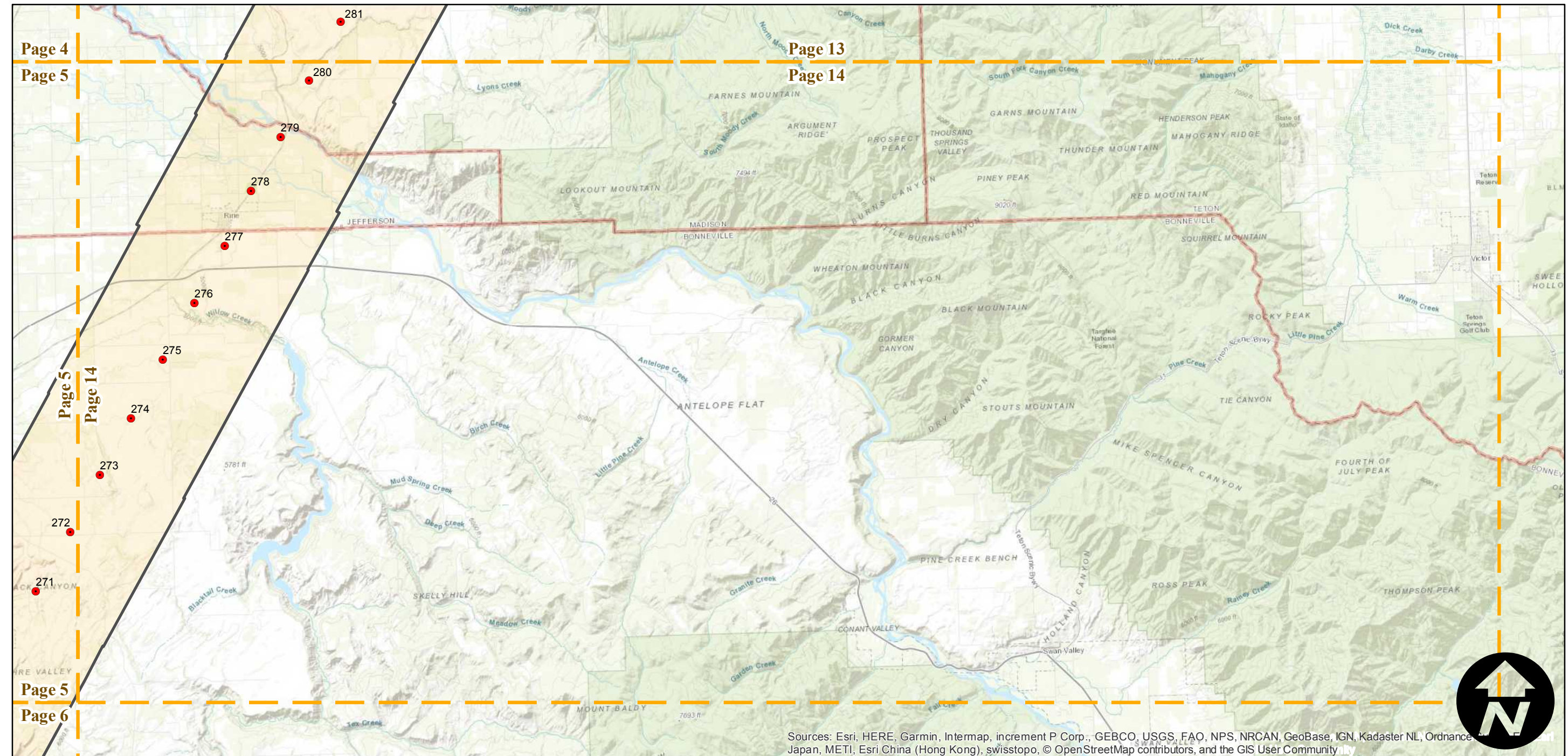
Counties: Bingham, Bonneville, Caribou, Clark, Fremont, Jefferson, Madison (Idaho)
 Flight date(s): 06-10-1940 to 06-14-1940
 Scale: 1:31,680
 Overlap: 60-90%

Note: Coverage of Blackfoot, Idaho to Norris, Montana and Anaconda, Montana to Grace, Idaho. Includes Ashton, Big Springs, Dell, Ennis Lake, Henrys Lake, Lyon, Melrose, Monida, Shelly, and more. Imagery acquired January 2013. Nitrate negatives scanned, November 2015.

FLIGHT LOCATION



Complete Metadata:
<https://www.library.ucsb.edu/src/airphotos/aerial-photography-information>



Sources: Esri, HERE, Garmin, Intermap, increment P Corp., GEBCO, USGS, FAO, NPS, NRCAN, GeoBase, IGN, Kadaster NL, Ordnance Survey, Esri Japan, METI, Esri China (Hong Kong), swisstopo, © OpenStreetMap contributors, and the GIS User Community

0 3 6 12 Miles

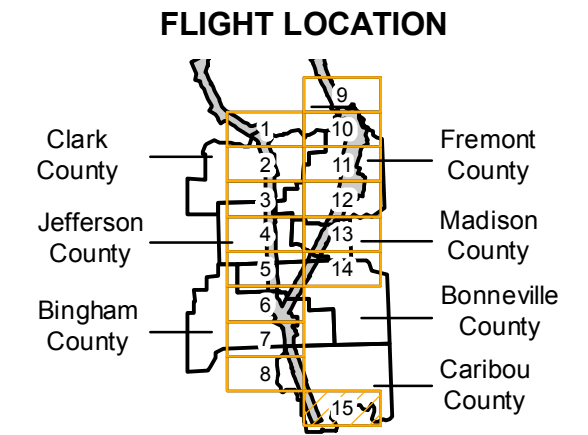
Index to Aerial Photography
 Page 14 of 15

Scale of this index: 1:175,000

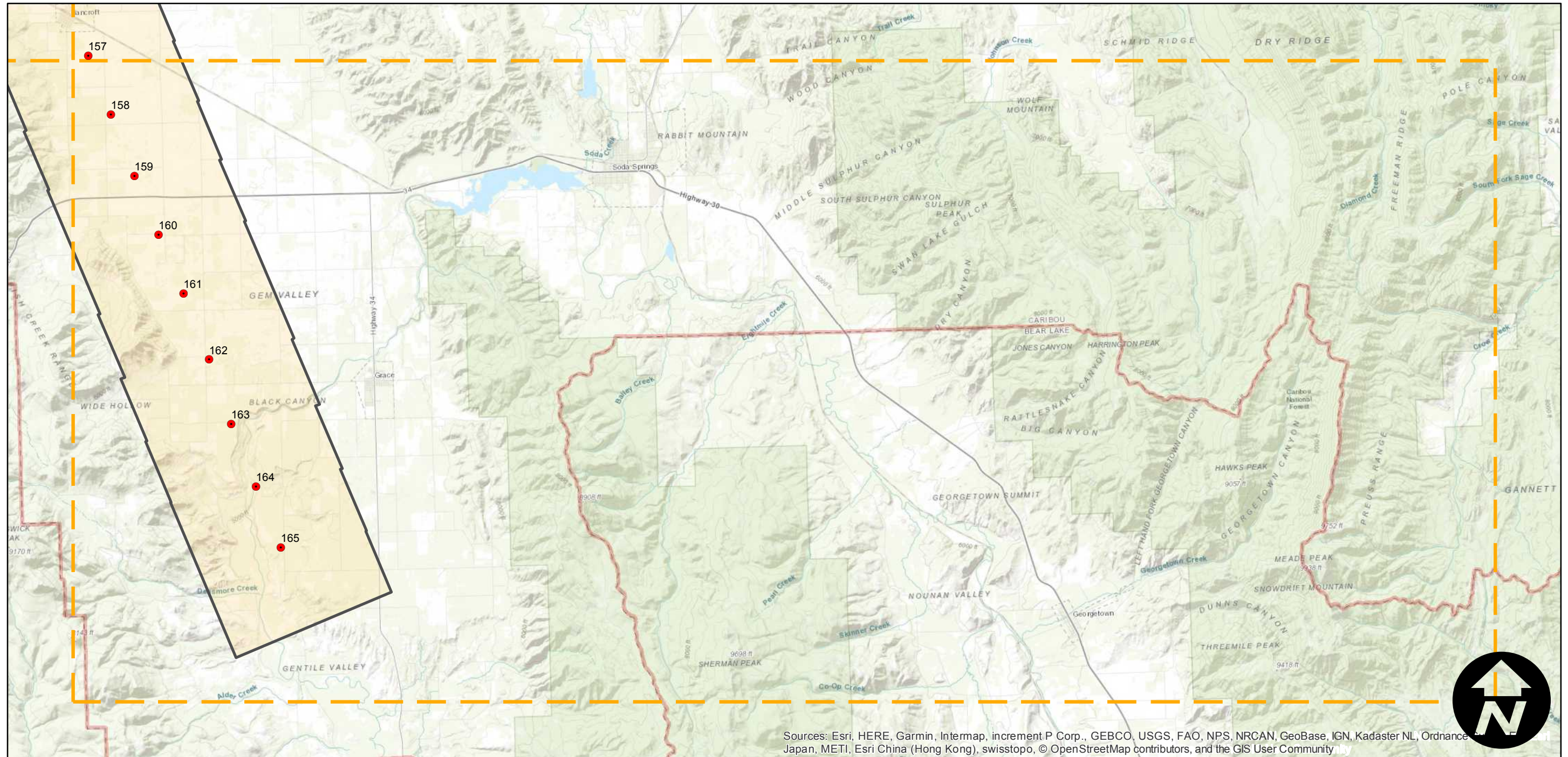
C-6466 (Idaho)

Counties: Bingham, Bonneville, Caribou, Clark, Fremont, Jefferson, Madison (Idaho)
 Flight date(s): 06-10-1940 to 06-14-1940
 Scale: 1:31,680
 Overlap: 60-90%

Note: Coverage of Blackfoot, Idaho to Norris, Montana and Anaconda, Montana to Grace, Idaho. Includes Ashton, Big Springs, Dell, Ennis Lake, Henrys Lake, Lyon, Melrose, Monida, Shelly, and more. Imagery acquired January 2013. Nitrate negatives scanned, November 2015.



Complete Metadata:
<https://www.library.ucsb.edu/src/airphotos/aerial-photography-information>



Sources: Esri, HERE, Garmin, Intermap, increment P Corp., GEBCO, USGS, FAO, NPS, NRCAN, GeoBase, IGN, Kadaster NL, Ordnance Survey, Esri Japan, METI, Esri China (Hong Kong), swisstopo, © OpenStreetMap contributors, and the GIS User Community

