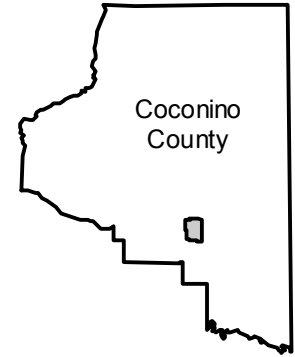


C-6065

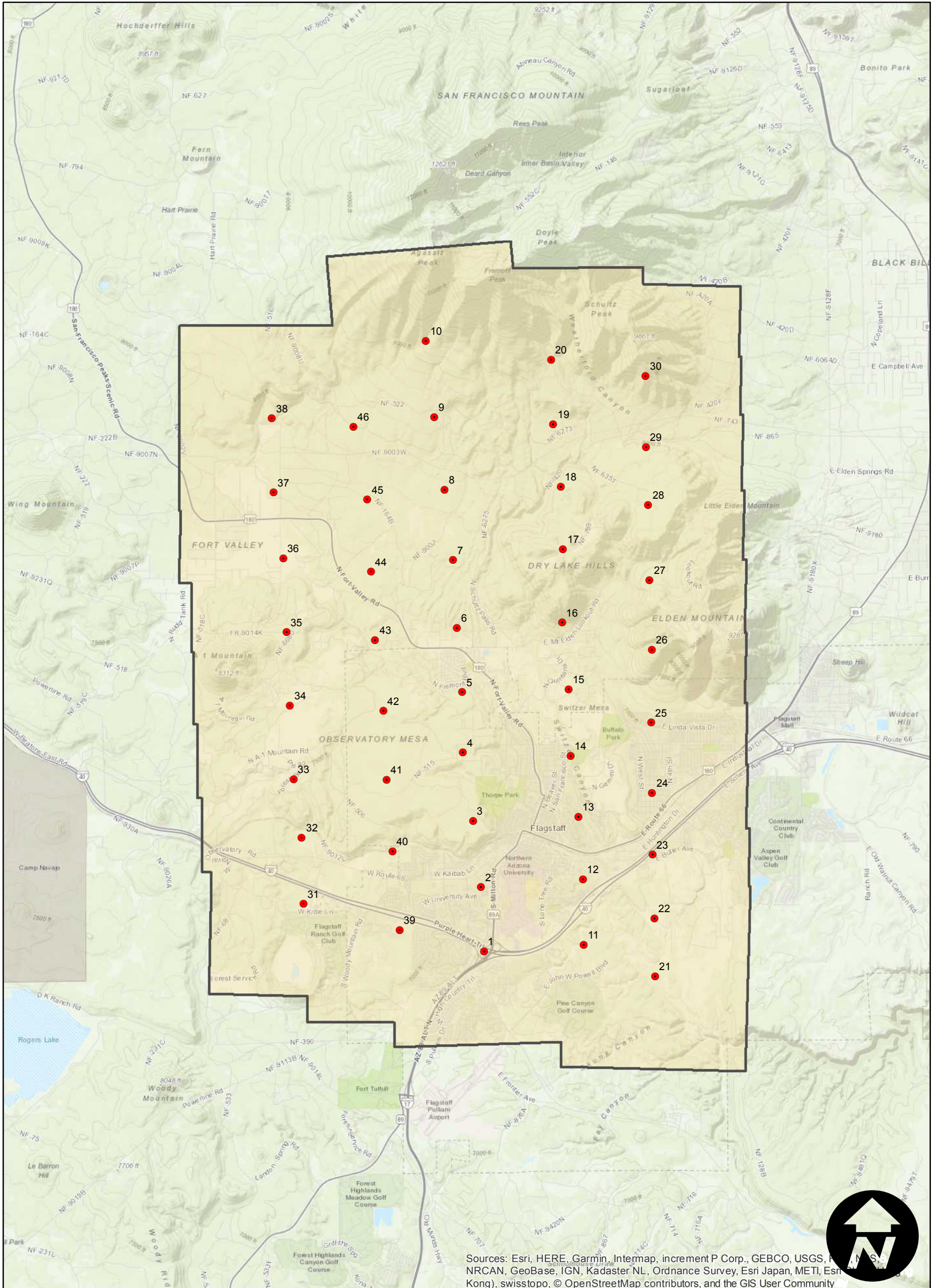
Counties: Coconino (Arizona)
Flight date(s): 10-01-1939
Scale: 1:20,000
Overlap: 60%

Note: Flagstaff to Agassiz Peak. Imagery acquired January 2013.

FLIGHT LOCATION



Complete Metadata:
<https://www.library.ucsb.edu/src/airphotos/aerial-photography-information>



Sources: Esri, HERE, Garmin, Intermap, increment P Corp., GEBCO, USGS, NRCAN, GeoBase, IGN, Kadaster NL, Ordnance Survey, Esri Japan, METI, Esri (China), Swisstopo, © OpenStreetMap contributors, and the GIS User Community

