

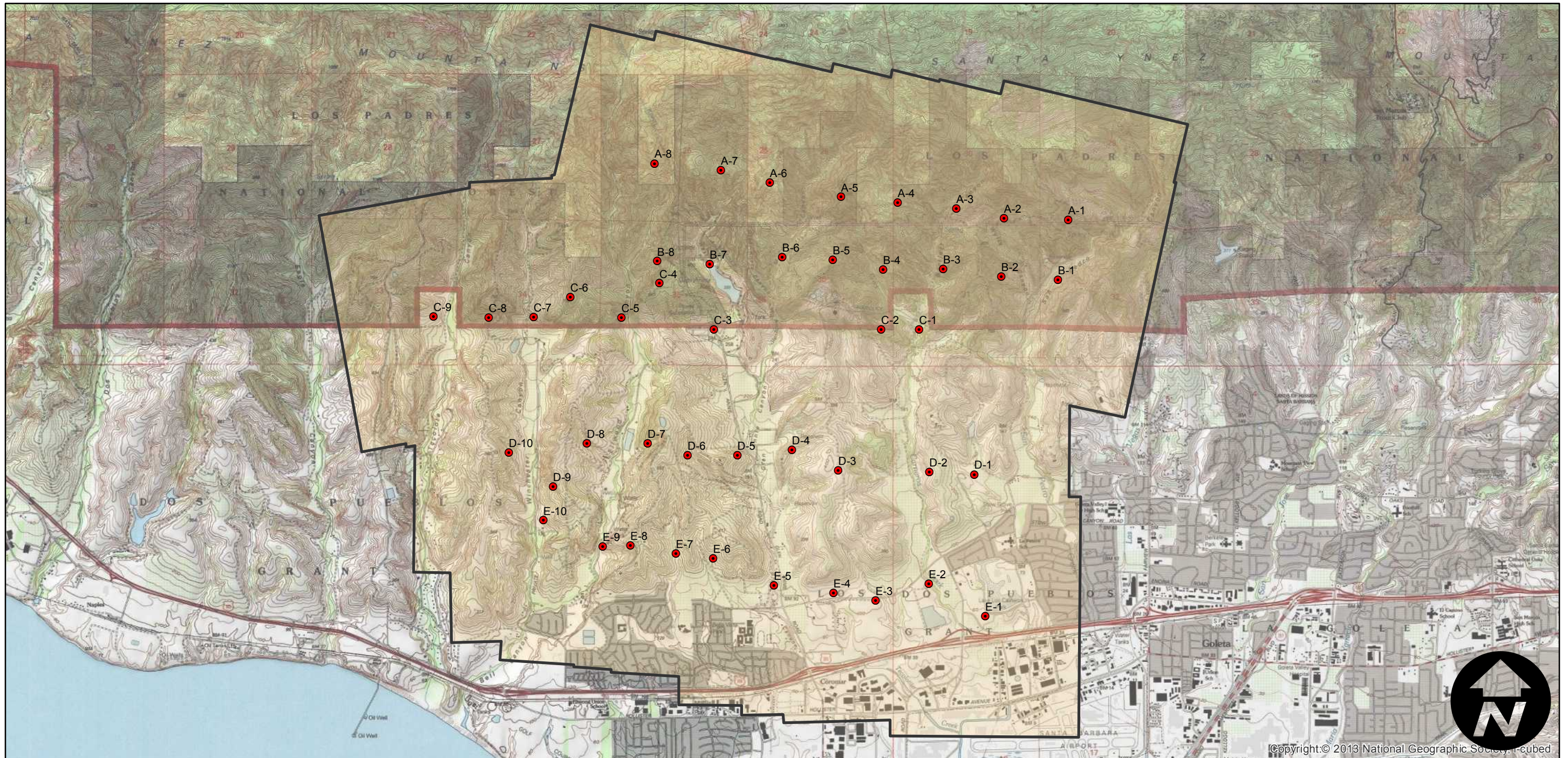
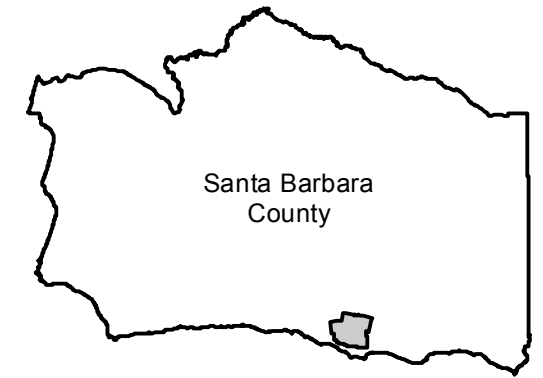
C-606

Counties: Santa Barbara
Flight date(s): 1-1-1929 to 12-31-1929
Scale: 1:12,000
Overlap: 60%

Note: Goleta area: US 101 to Los Padres National Forest.
Acquired from Whittier College, January 2013.

Complete Metadata:
<http://www.library.ucsb.edu/mil/aerial-photography-tools>

FLIGHT LOCATION



0 0.5 1 2 Miles

Index to Aerial Photography
Page 1 of 1

Scale of this index: 1:45,000