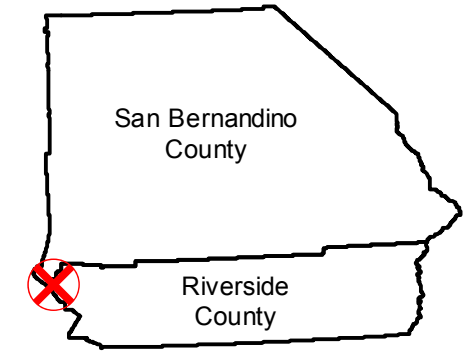


# C-5928 (1:4.8K)

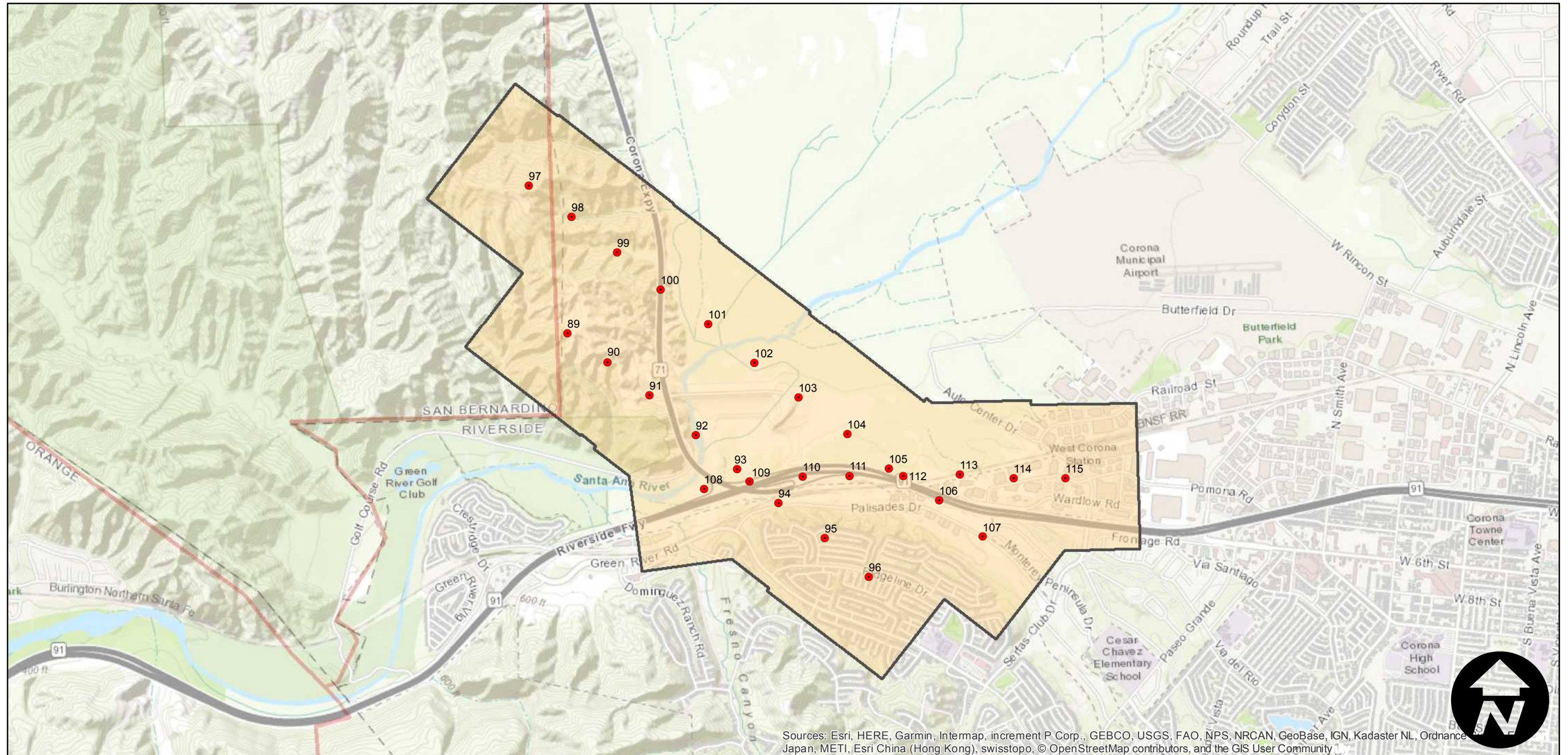
Counties: Riverside  
Flight date(s): 07-08-1939  
Scale: 1:4,800  
Overlap: 60%

Note: West Corona, from California-71 to Serfas Club Drive.  
Imagery acquired from Teledyne, Inc., 1986 and Whittier College, January 2013. Nitrate negatives scanned, October 2015.

## FLIGHT LOCATION



Complete Metadata:  
<https://www.library.ucsb.edu/src/airphotos/aerial-photography-information>



Sources: Esri, HERE, Garmin, Intermap, increment P Corp., GEBCO, USGS, FAO, NPS, NRCAN, GeoBase, IGN, Kadaster NL, Ordnance Survey, Esri China (Hong Kong), Swisstopo, © OpenStreetMap contributors, and the GIS User Community

