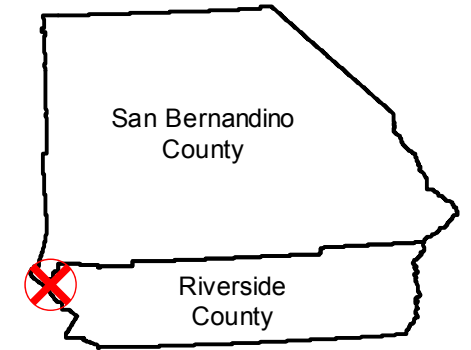


C-5928 (1:18K)

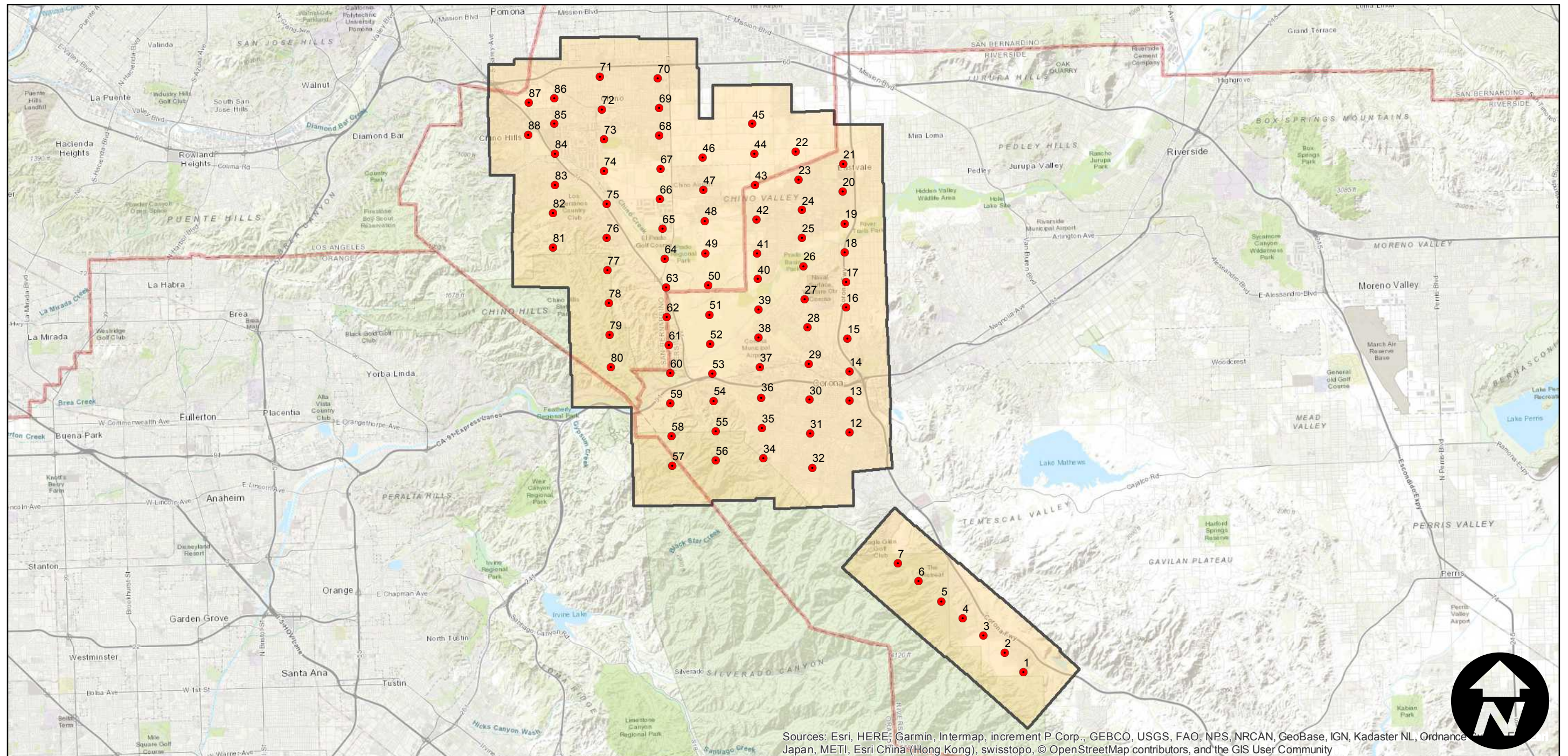
Counties: Riverside, San Bernardino
Flight date(s): 07-08-1939
Scale: 1:18,000
Overlap: 60%

Note: Temescal Valley, Norco, Corona, Chino, and vicinity.
Imagery acquired from Teledyne, Inc., 1986 and Whittier College, January 2013. Nitrate negatives scanned, October 2015.

FLIGHT LOCATION



Complete Metadata:
<https://www.library.ucsb.edu/src/airphotos/aerial-photography-information>



Sources: Esri, HERE, Garmin, Intermap, increment P Corp., GEBCO, USGS, FAO, NPS, NRCAN, GeoBase, IGN, Kadaster NL, Ordnance Survey, Esri Japan, METI, Esri China (Hong Kong), swisstopo, © OpenStreetMap contributors, and the GIS User Community

