

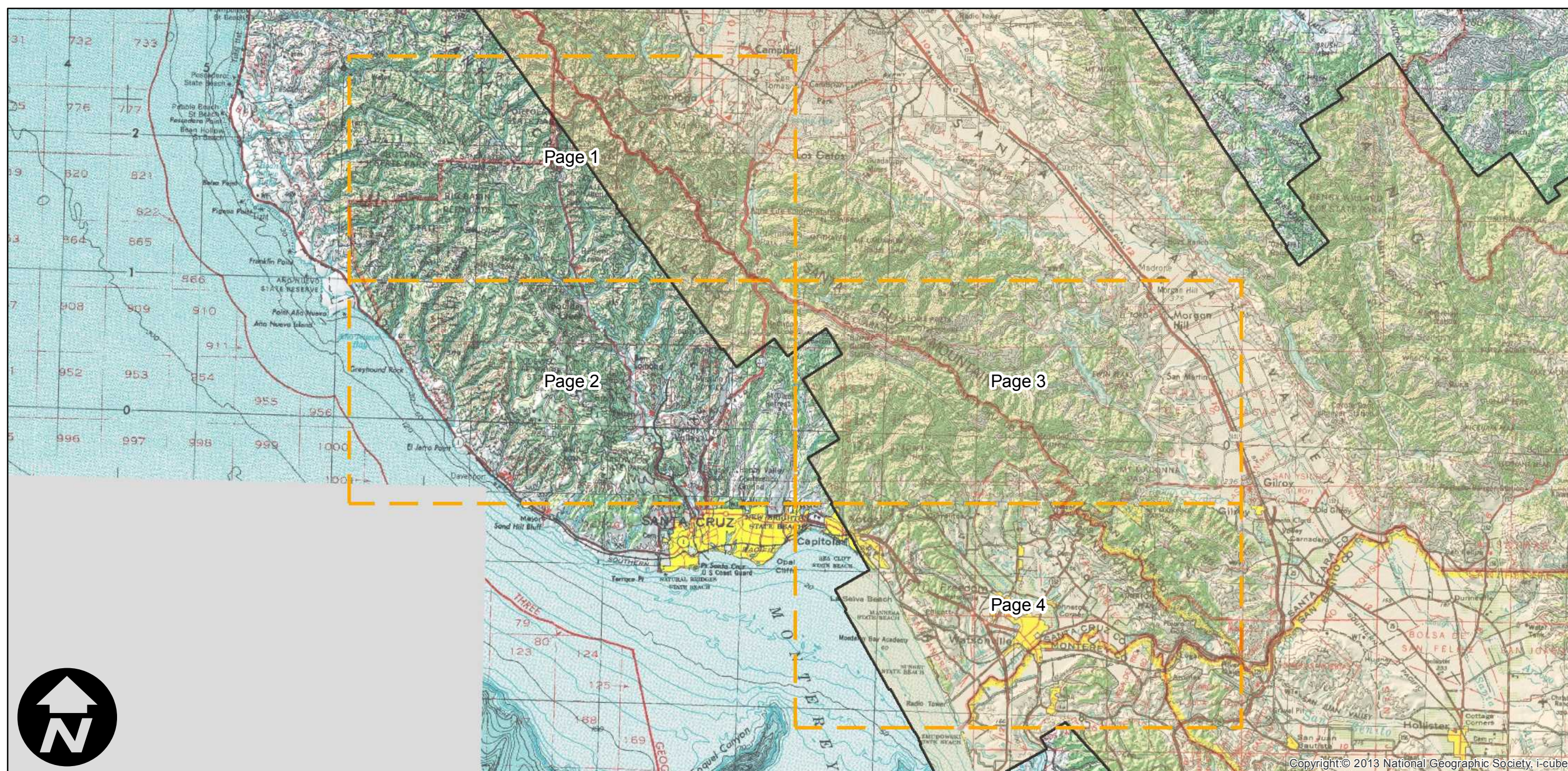
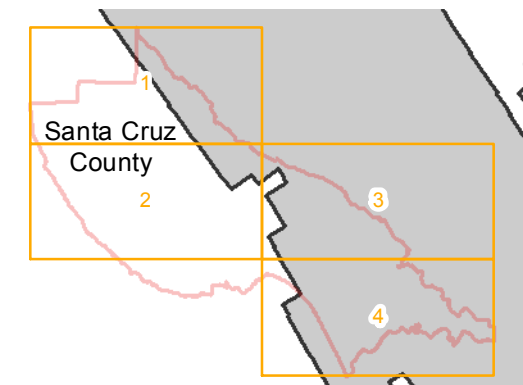
C-5750 (Santa Cruz County)

Counties: Santa Santa Cruz
Flight date(s): 01-01-1939 to 12-31-1939
Scale: 1: 20,000
Overlap: 60%

Note: Not all photographs are held in MIL's collection. Most positive transparencies held were made from deteriorating negatives. MIL has additional frames not shown on index that cover the same area as photographs that do appear on indexes. Imagery acquired 1986, 2000 and January 2013.

Complete Metadata:
<http://www.library.ucsb.edu/mil/aerial-photography-tools>

FLIGHT LOCATION



0 5 10 20 Miles

Index to Aerial Photography
Page Key

Scale of this index: 1:300,000

C-5750 (Santa Cruz County)

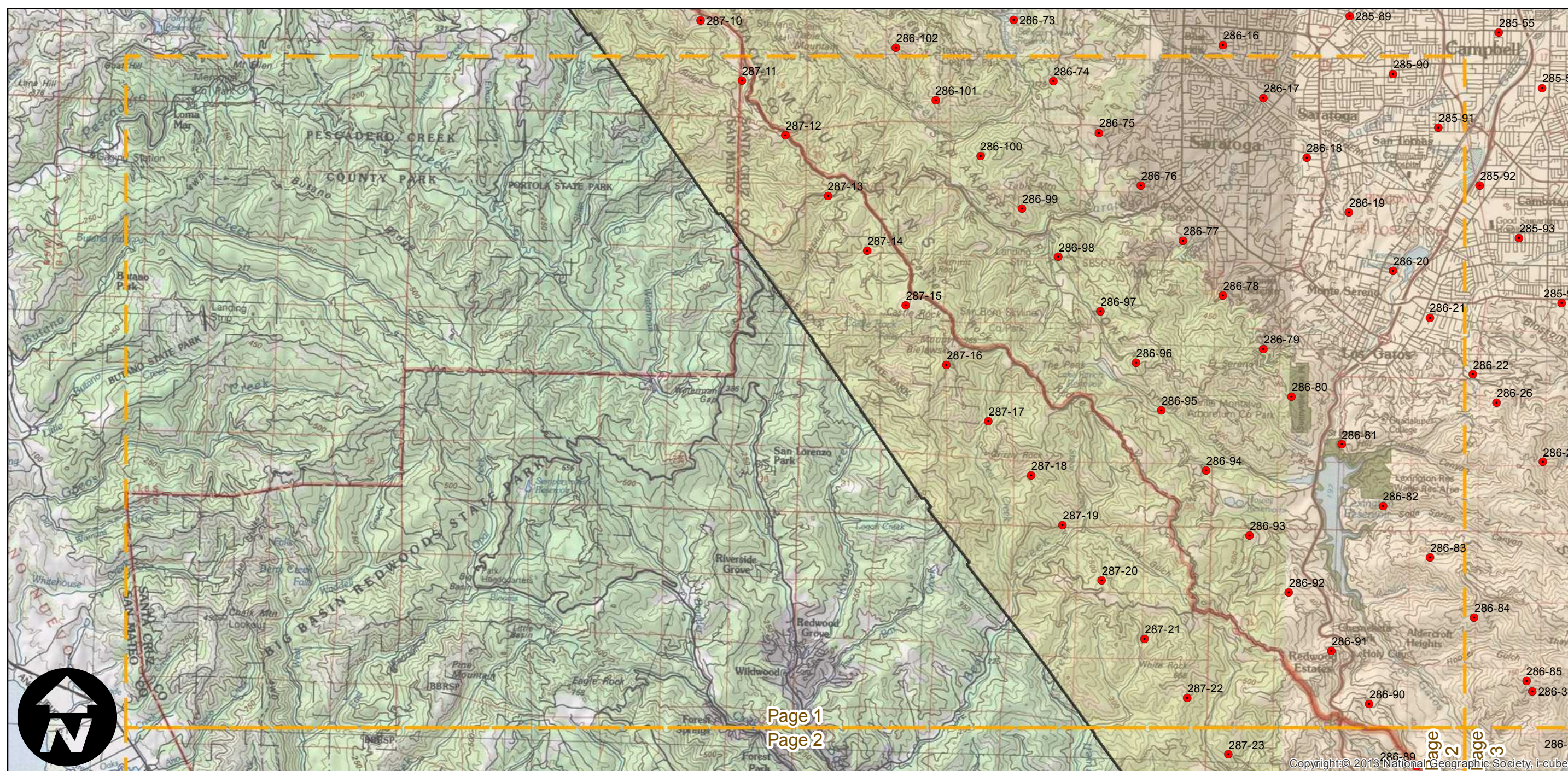
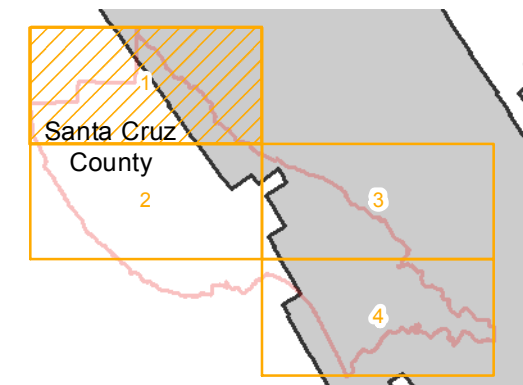
Counties: Santa Cruz
Flight date(s): 01-01-1939 to 12-31-1939
Scale: 1: 20,000
Overlap: 60%

Complete Metadata:
<http://www.library.ucsb.edu/mil/aerial-photography-tools>

Note: Not all photographs are held in MIL's collection. Most positive transparencies held were made from deteriorating negatives. MIL has additional frames not shown on index that cover the same area as photographs that do appear on indexes. Imagery acquired 1986, 2000 and January 2013.

- MIL owns frame
- MIL does not own frame

FLIGHT LOCATION



0 2 4 8 Miles

Index to Aerial Photography
Page 1 of 4

Scale of this index: 1:100,000

C-5750 (Santa Cruz County)

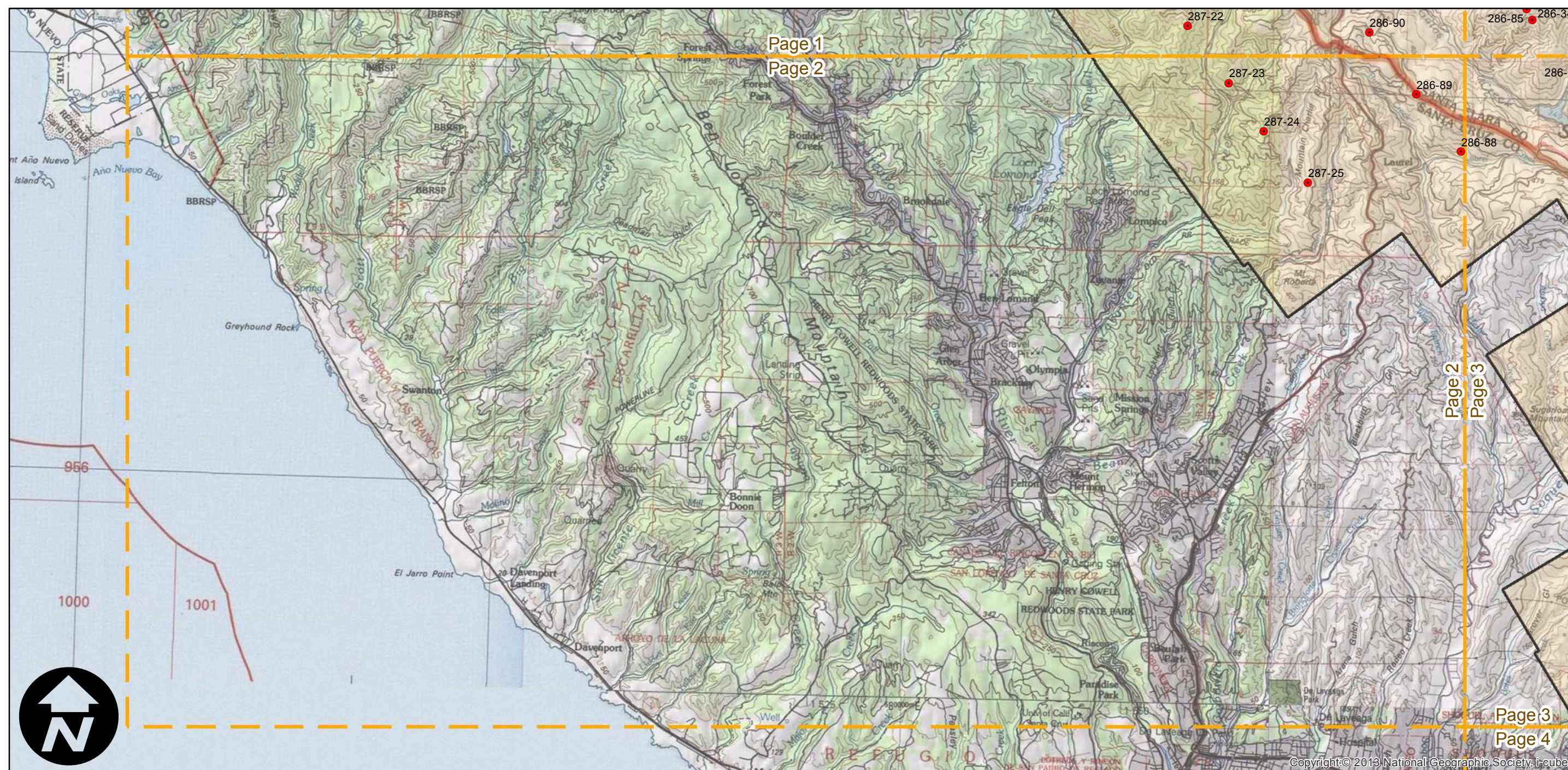
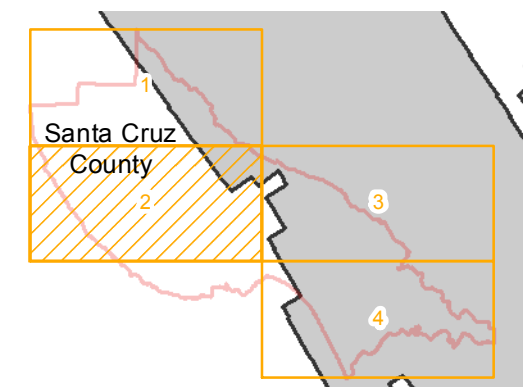
Counties: Santa Cruz
Flight date(s): 01-01-1939 to 12-31-1939
Scale: 1: 20,000
Overlap: 60%

Complete Metadata:
<http://www.library.ucsb.edu/mil/aerial-photography-tools>

Note: Not all photographs are held in MIL's collection. Most positive transparencies held were made from deteriorating negatives. MIL has additional frames not shown on index that cover the same area as photographs that do appear on indexes. Imagery acquired 1986, 2000 and January 2013.

- MIL owns frame
- MIL does not own frame

FLIGHT LOCATION



0 2 4 8 Miles

Index to Aerial Photography
Page 2 of 4

Scale of this index: 1:100,000

Copyright © 2013 National Geographic Society, i-cubed

C-5750 (Santa Cruz County)

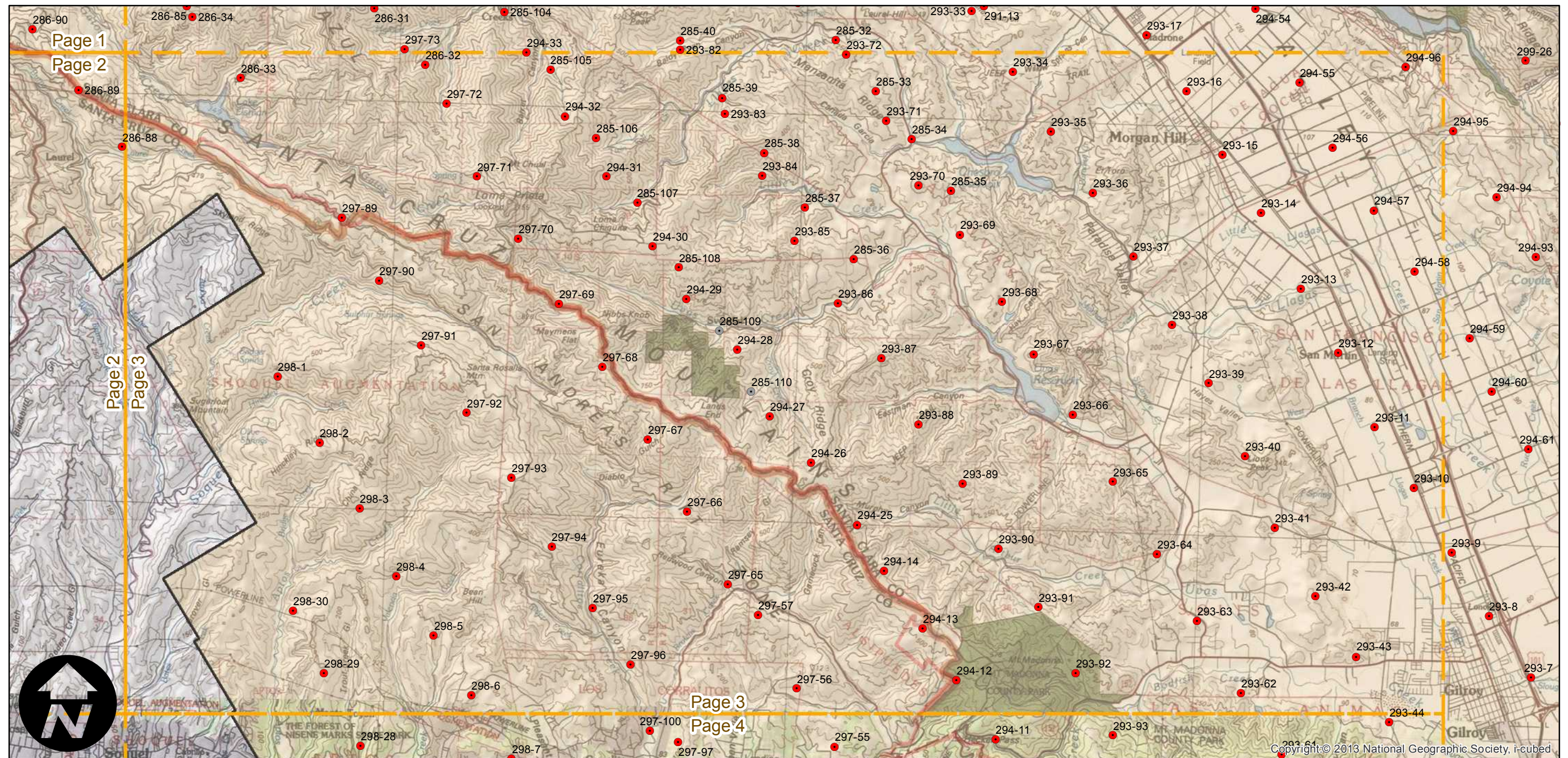
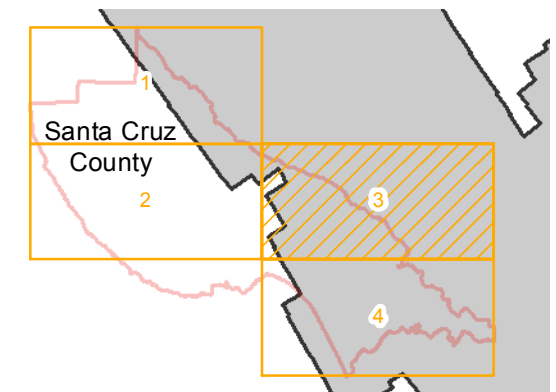
Counties: Santa Cruz
Flight date(s): 01-01-1939 to 12-31-1939
Scale: 1: 20,000
Overlap: 60%

Complete Metadata:
<http://www.library.ucsb.edu/mil/aerial-photography-tools>

Note: Not all photographs are held in MIL's collection. Most positive transparencies held were made from deteriorating negatives. MIL has additional frames not shown on index that cover the same area as photographs that do appear on indexes. Imagery acquired 1986, 2000 and January 2013.

- MIL owns frame
- MIL does not own frame

FLIGHT LOCATION



Copyright:© 2013 National Geographic Society, i-cubed

Index to Aerial Photography
Page 3 of 4

Scale of this index: 1:100,000

C-5750 (Santa Cruz County)

Counties: Santa Cruz
Flight date(s): 01-01-1939 to 12-31-1939
Scale: 1: 20,000
Overlap: 60%

Complete Metadata:
<http://www.library.ucsb.edu/mil/aerial-photography-tools>

Note: Not all photographs are held in MIL's collection. Most positive transparencies held were made from deteriorating negatives. MIL has additional frames not shown on index that cover the same area as photographs that do appear on indexes. Imagery acquired 1986, 2000 and January 2013.

- MIL owns frame
- MIL does not own frame

FLIGHT LOCATION

