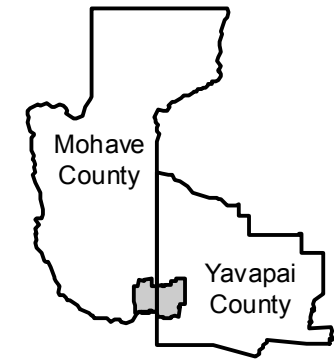


C-5517

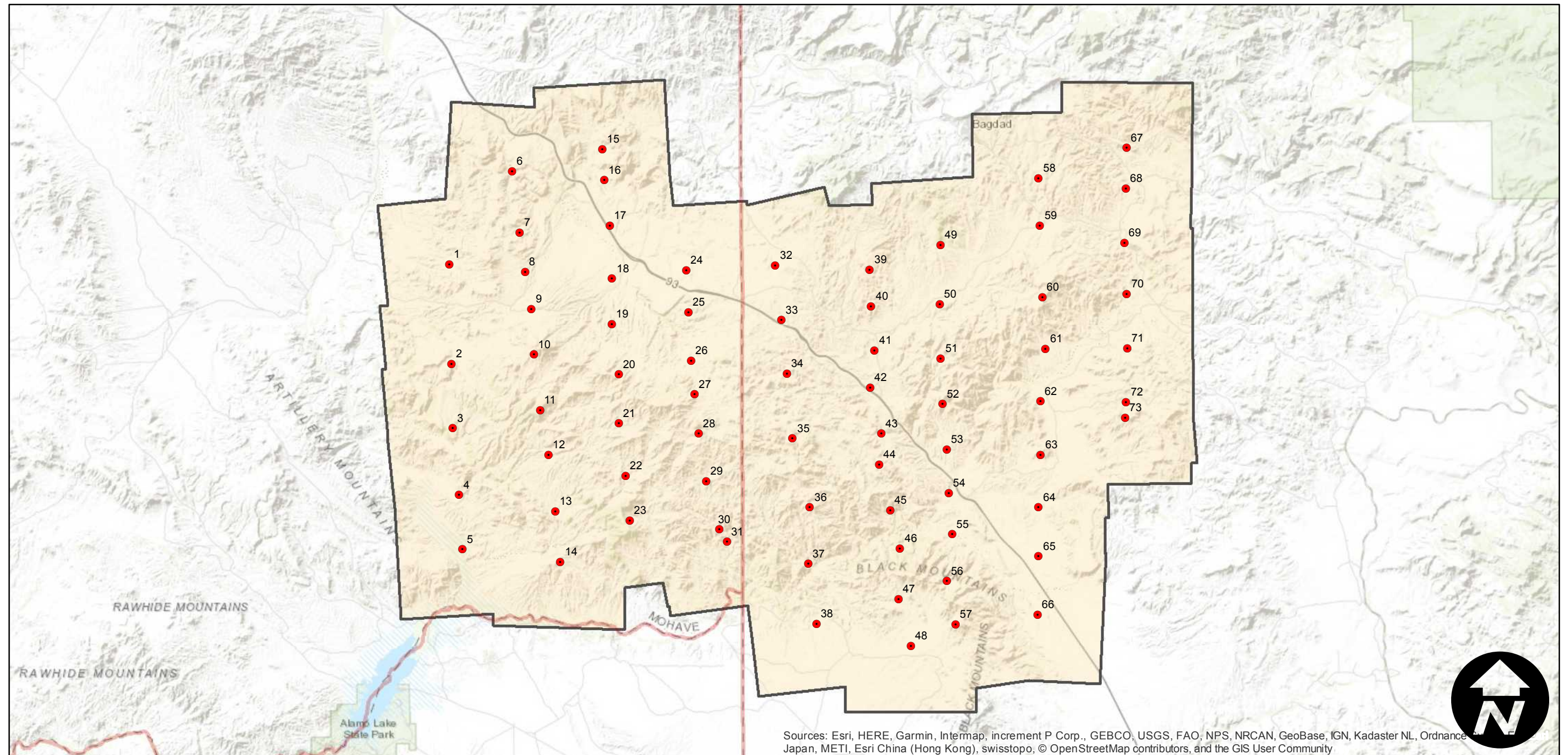
Counties: Mohave, Yavapai (Arizona)
Flight date(s): 01-10-1939
Scale: 1:31,680
Overlap: 60-80%

Note: Coverage of area between Greenwood and Hillside.
Imagery acquired January 2013.

FLIGHT LOCATION



Complete Metadata:
<https://www.library.ucsb.edu/src/airphotos/aerial-photography-information>



Sources: Esri, HERE, Garmin, Intermap, increment P Corp., GEBCO, USGS, FAO, NPS, NRCAN, GeoBase, IGN, Kadaster NL, Ordnance Survey, Esri Japan, METI, Esri China (Hong Kong), swisstopo, © OpenStreetMap contributors, and the GIS User Community

0 5 10 20 Miles

Index to Aerial Photography
Page 1 of 1

Scale of this index: 1:250,000