

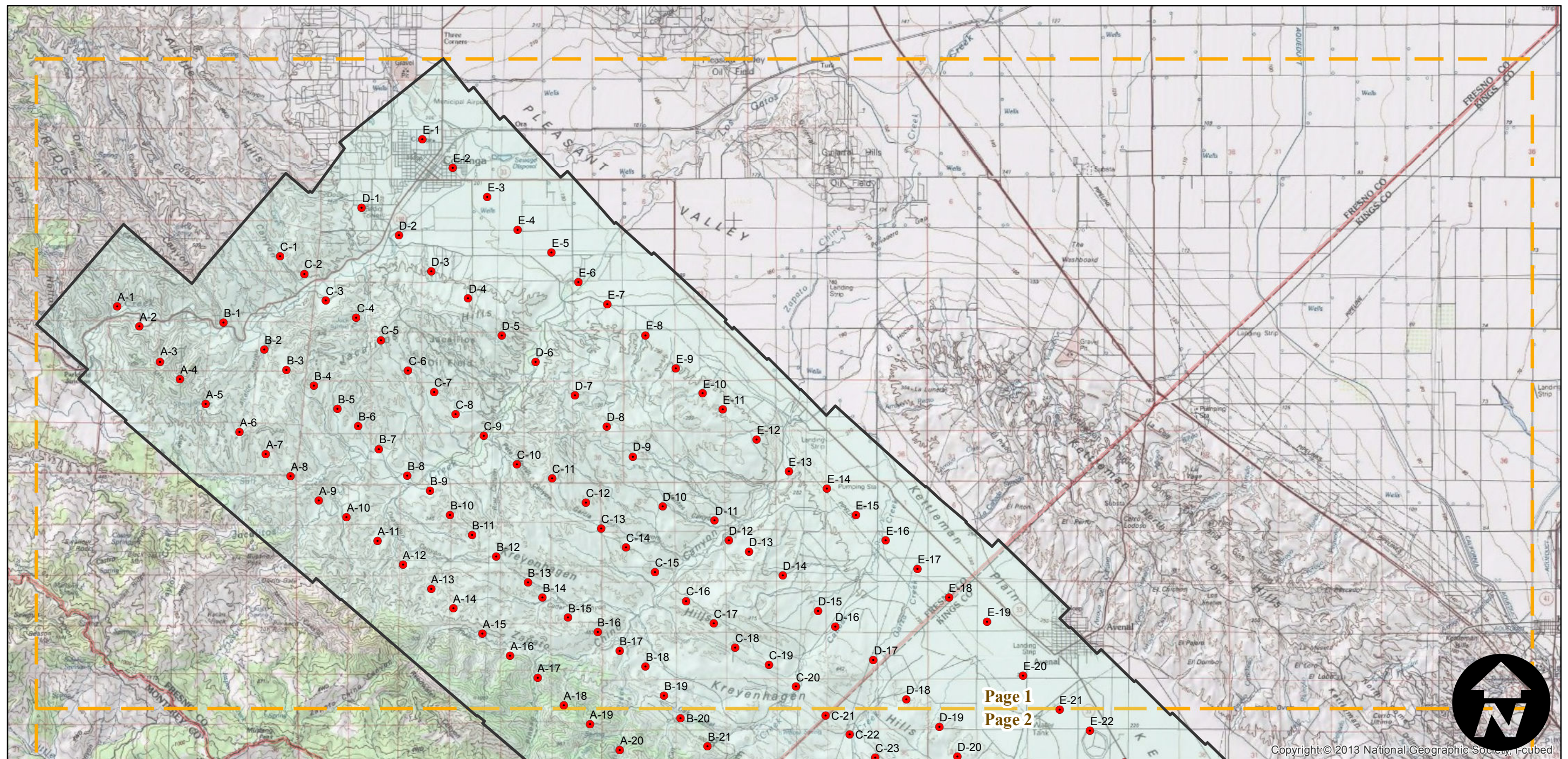
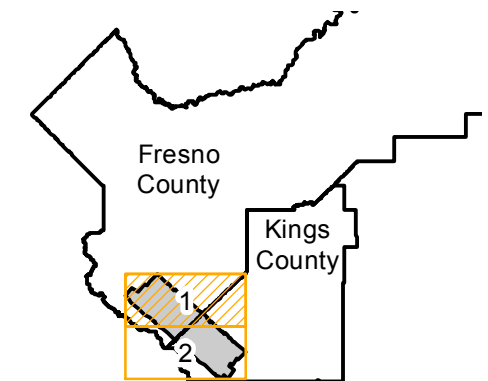
C-541

Counties: Fresno, Kings
Flight date(s): 5/1/1929 to 5/31/1929
Scale: 1:18,000
Overlap: 60%

Note: Area southeast of Coalinga. Acquired from Whittier College, January 2013.

Complete Metadata:
<http://www.library.ucsb.edu/mil/aerial-photography-tools>

FLIGHT LOCATION



0 2 4 8 Miles

Index to Aerial Photography
Page 1 of 2

Scale of this index: 1:130,000

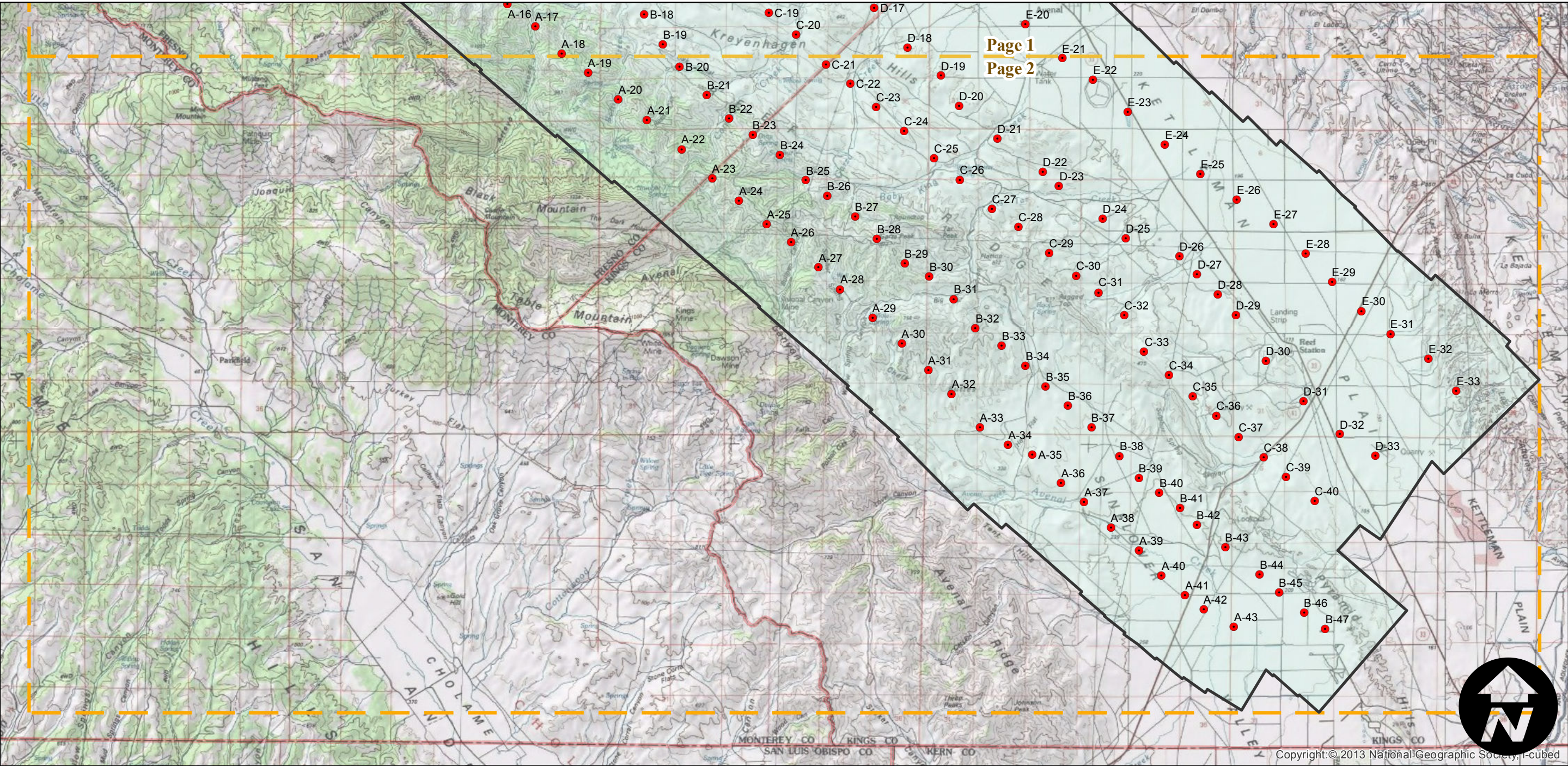
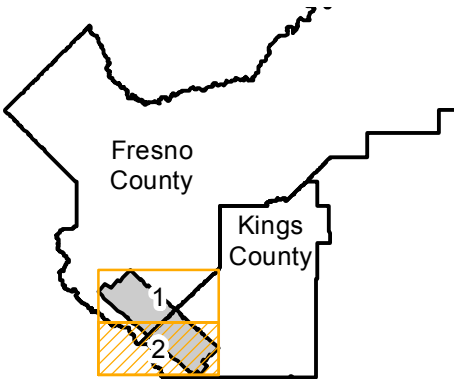
C-541

Counties: Fresno, Kings
Flight date(s): 5/1/1929 to 5/31/1929
Scale: 1:18,000
Overlap: 60%

Complete Metadata:
<http://www.library.ucsb.edu/mil/aerial-photography-tools>

Note: Area southeast of Coalinga. Acquired from Whittier College, January 2013.

FLIGHT LOCATION



0 2 4 8 Miles

Index to Aerial Photography
Page 2 of 2

Scale of this index: 1:130,000