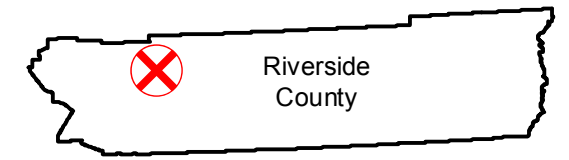


# C-5405 (1:6K)

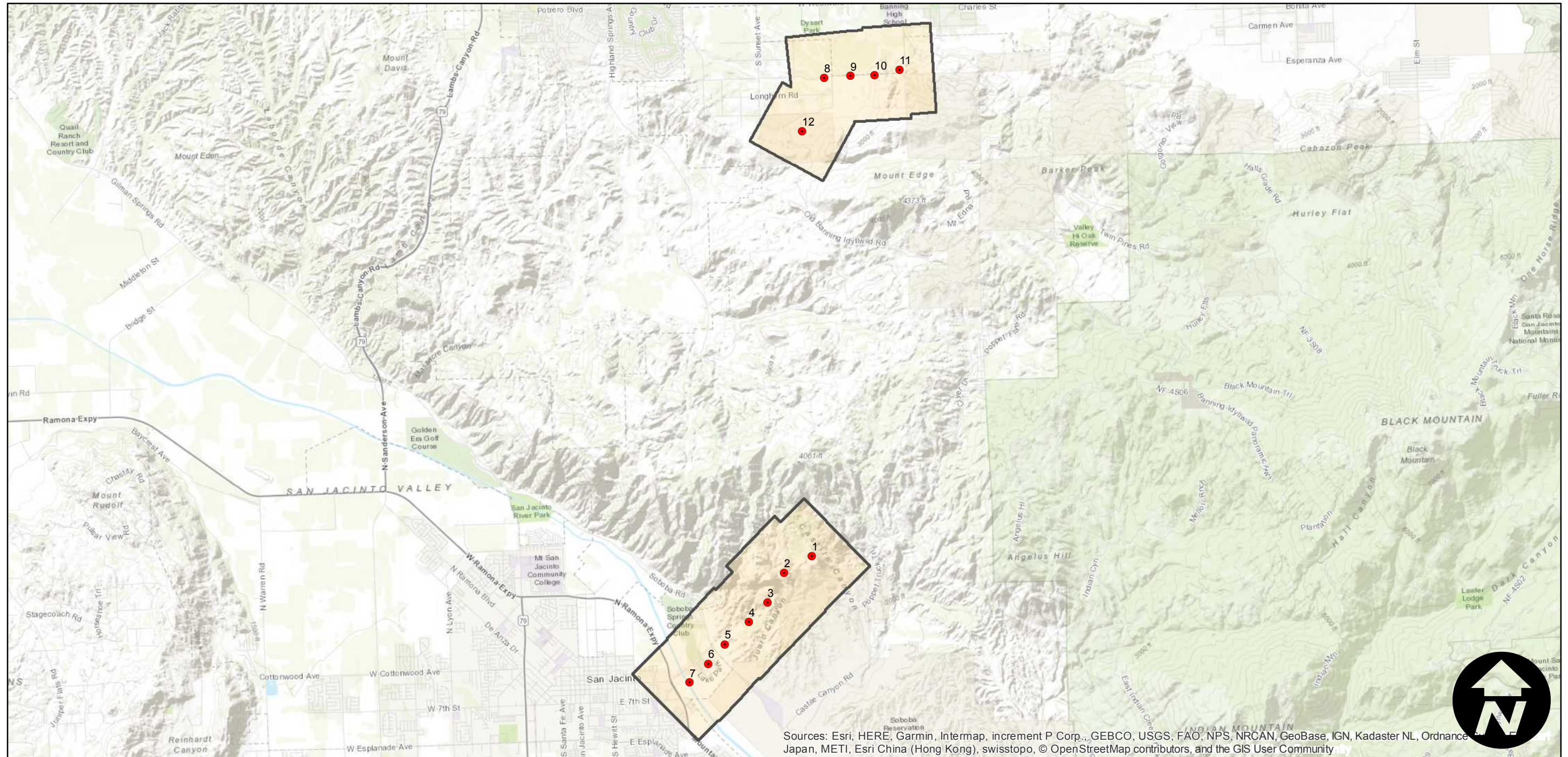
Counties: Riverside  
Flight date(s): 09-20-1938  
Scale: 1:6,000  
Overlap: 60%

Note: Juaro Canyon (east of San Jacinto) and area north of Mount Edge (south of Banning). Imagery acquired January 2013. Nitrate negatives scanned, October 2015.

## FLIGHT LOCATION



Complete Metadata:  
<https://www.library.ucsb.edu/src/airphotos/aerial-photography-information>



Sources: Esri, HERE, Garmin, Intermap, increment P Corp., GEBCO, USGS, FAO, NPS, NRCAN, GeoBase, IGN, Kadaster NL, Ordnance Survey, Esri Japan, METI, Esri China (Hong Kong), swisstopo, © OpenStreetMap contributors, and the GIS User Community

