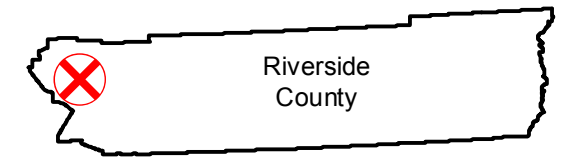


C-5405 (1:4.8K)

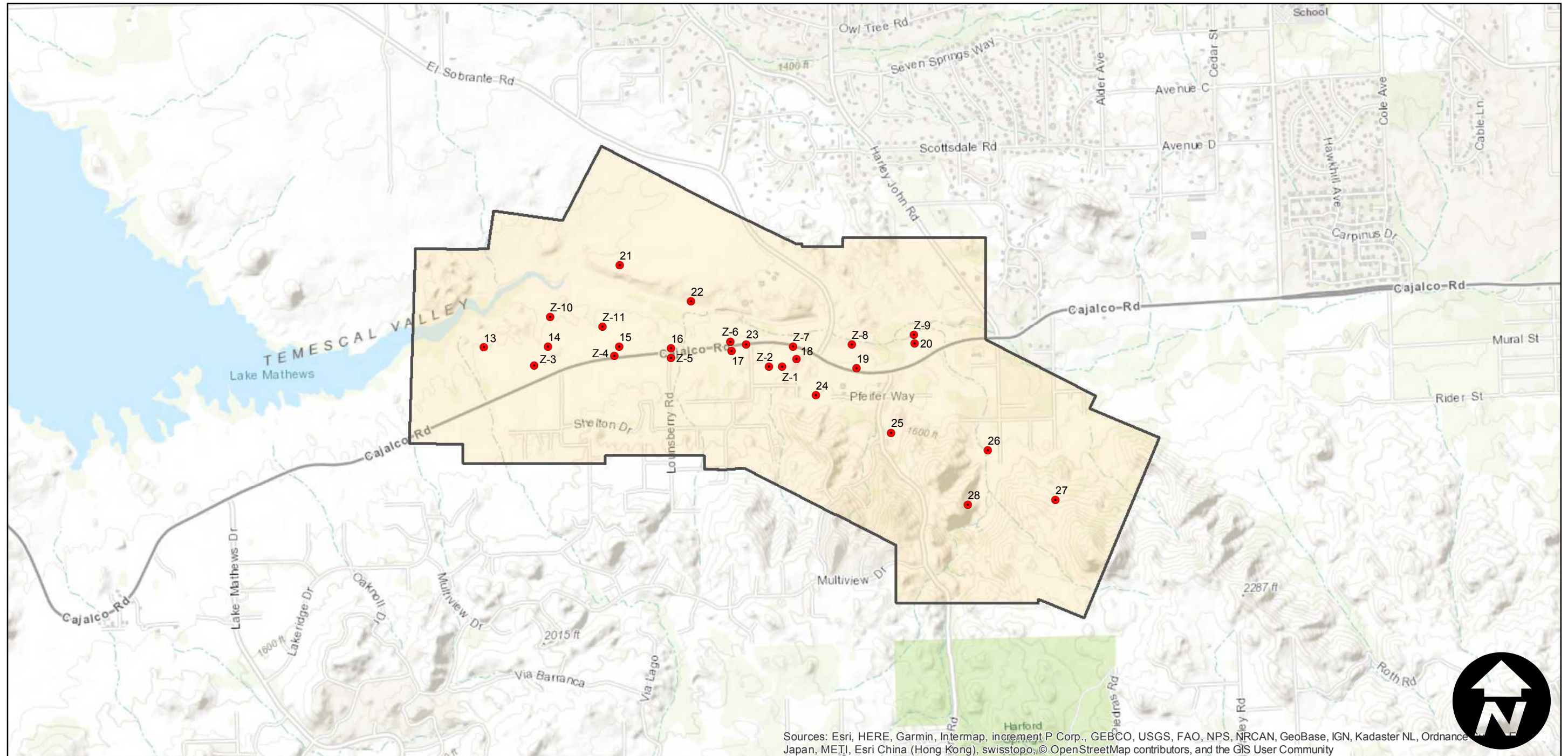
Counties: Riverside
Flight date(s): 09-20-1938
Scale: 1:4,800
Overlap: 60-80%

Note: Vicinity of Val Verde Tunnel, south of Riverside.
Imagery acquired January 2013. Nitrate negatives scanned, October 2015.

FLIGHT LOCATION



Complete Metadata:
<https://www.library.ucsb.edu/src/airphotos/aerial-photography-information>



Sources: Esri, HERE, Garmin, Intermap, increment P Corp., GEBCO, USGS, FAO, NPS, NRCAN, GeoBase, IGN, Kadaster NL, Ordnance Survey, Esri China (Hong Kong), Swisstopo, © OpenStreetMap contributors, and the GIS User Community

