

C-5147

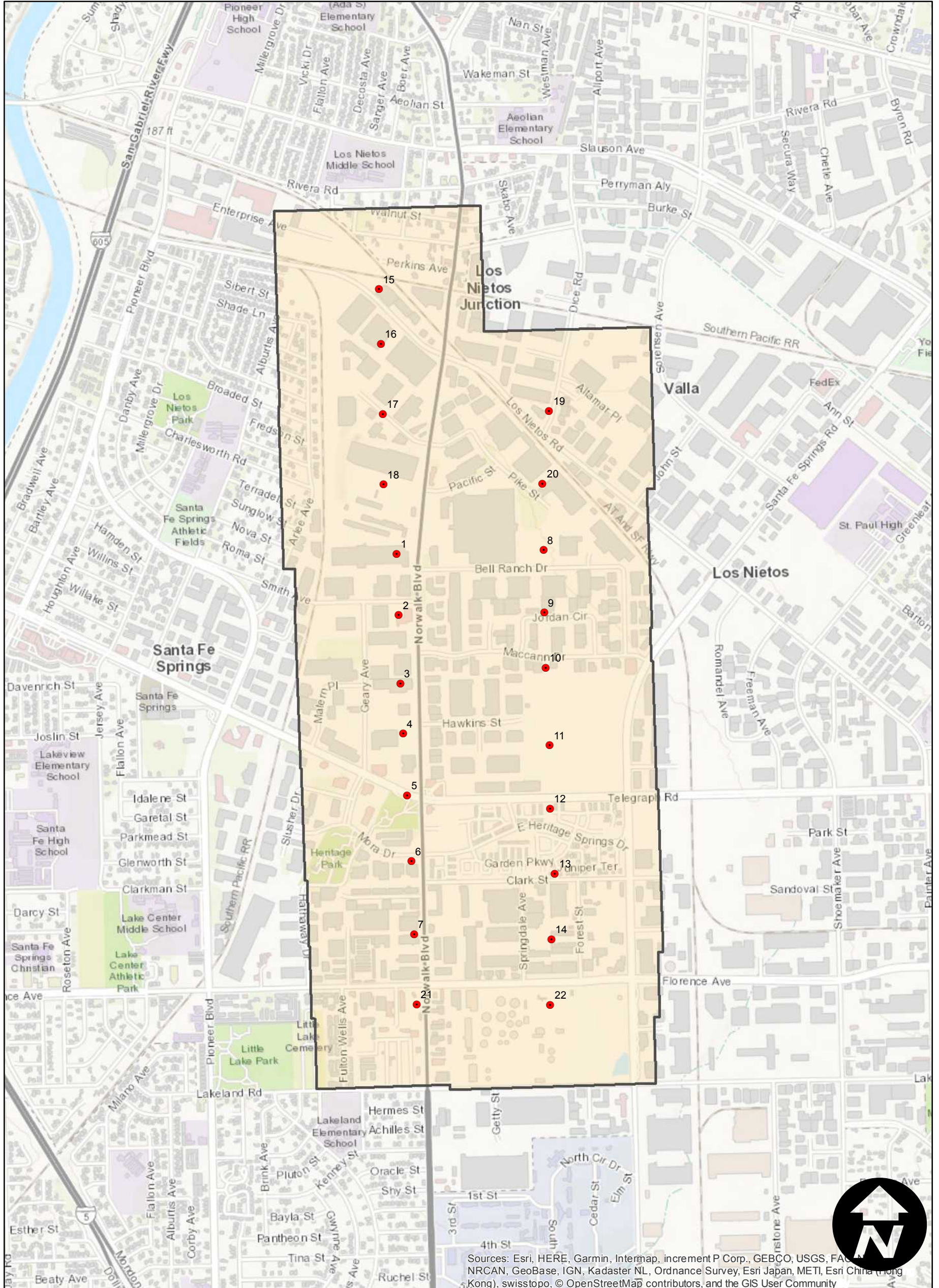
FLIGHT LOCATION

Counties: Los Angeles
Flight date(s): 04-28-1938
Scale: 1:3,600
Overlap: 60%

Note: Vicinity of Santa Fe Springs, area between Perkins Avenue and Clark Street/Florence Avenue. Imagery acquired January 2013. Nitrate negatives scanned, October 2015.



Complete Metadata:
<https://www.library.ucsb.edu/src/airphotos/aerial-photography-information>



Sources: Esri, HERE, Garmin, Intermap, increment P Corp., GEBCO, USGS, FAO, NRCAN, GeoBase, IGN, Kadaster NL, Ordnance Survey, Esri Japan, METI, Esri China (Hong Kong), swisstopo, © OpenStreetMap contributors, and the GIS User Community

0 0.15 0.3 0.6 Miles

Index to Aerial Photography
Page 1 of 1

Scale of this index: 1:15,000