

C-5084

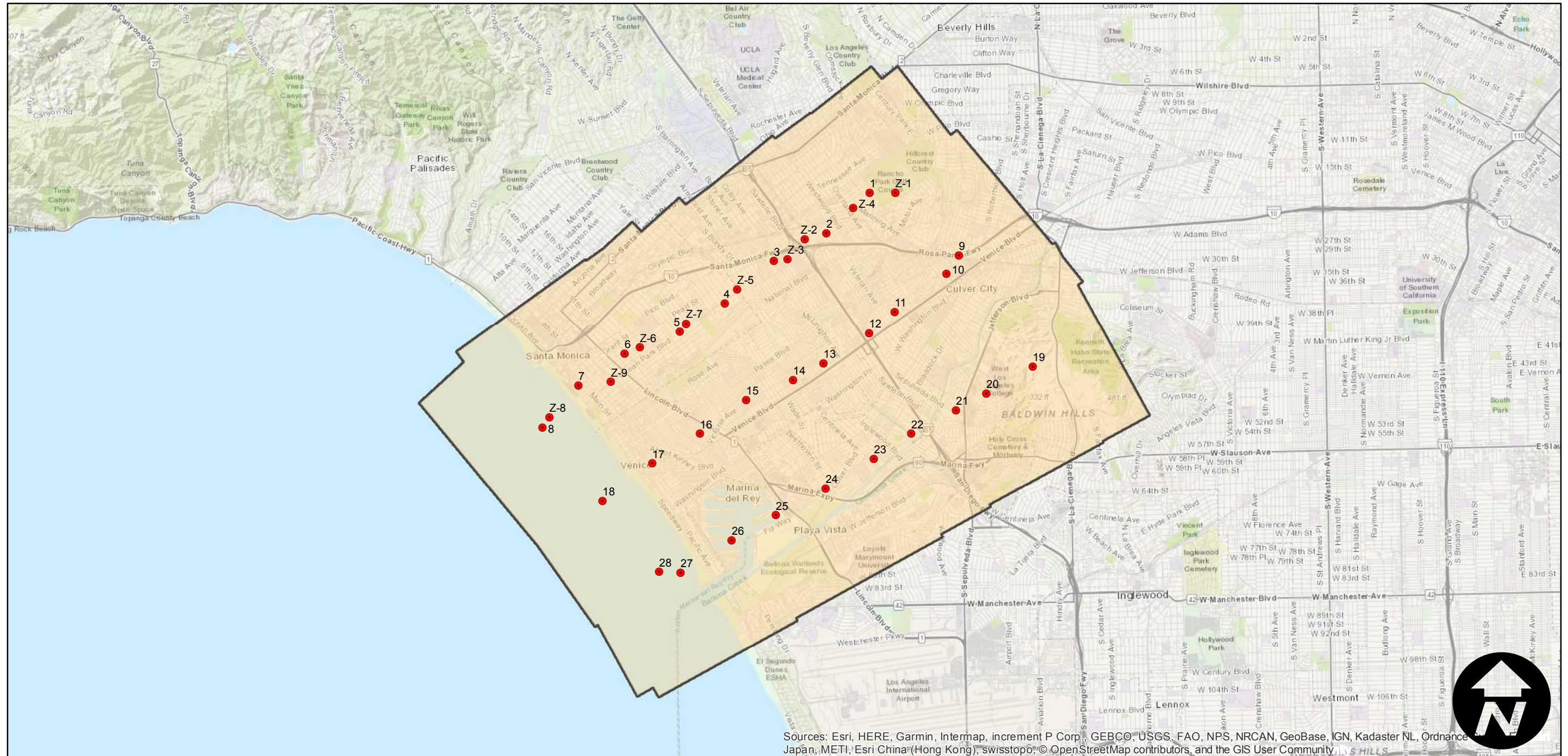
Counties: Los Angeles
Flight date(s): 04-01-1938
Scale: 1:18,000
Overlap: 60-80%

Note: Santa Monica to Culver City, including "Clover Field".
Imagery acquired from Teledyne, 1986 and Whittier College, January 2013. Nitrate negatives scanned, October 2015.

FLIGHT LOCATION



Complete Metadata:
<https://www.library.ucsb.edu/src/airphotos/aerial-photography-information>



Sources: Esri, HERE, Garmin, Intermap, increment P Corp., GEBCO, USGS, FAO, NPS, NRCAN, GeoBase, IGN, Kadaster NL, Ordnance Japan, METI, Esri China (Hong Kong), swisstopo, © OpenStreetMap contributors, and the GIS User Community

0 1.5 3 6 Miles

Scale of this index: 1:90,000