

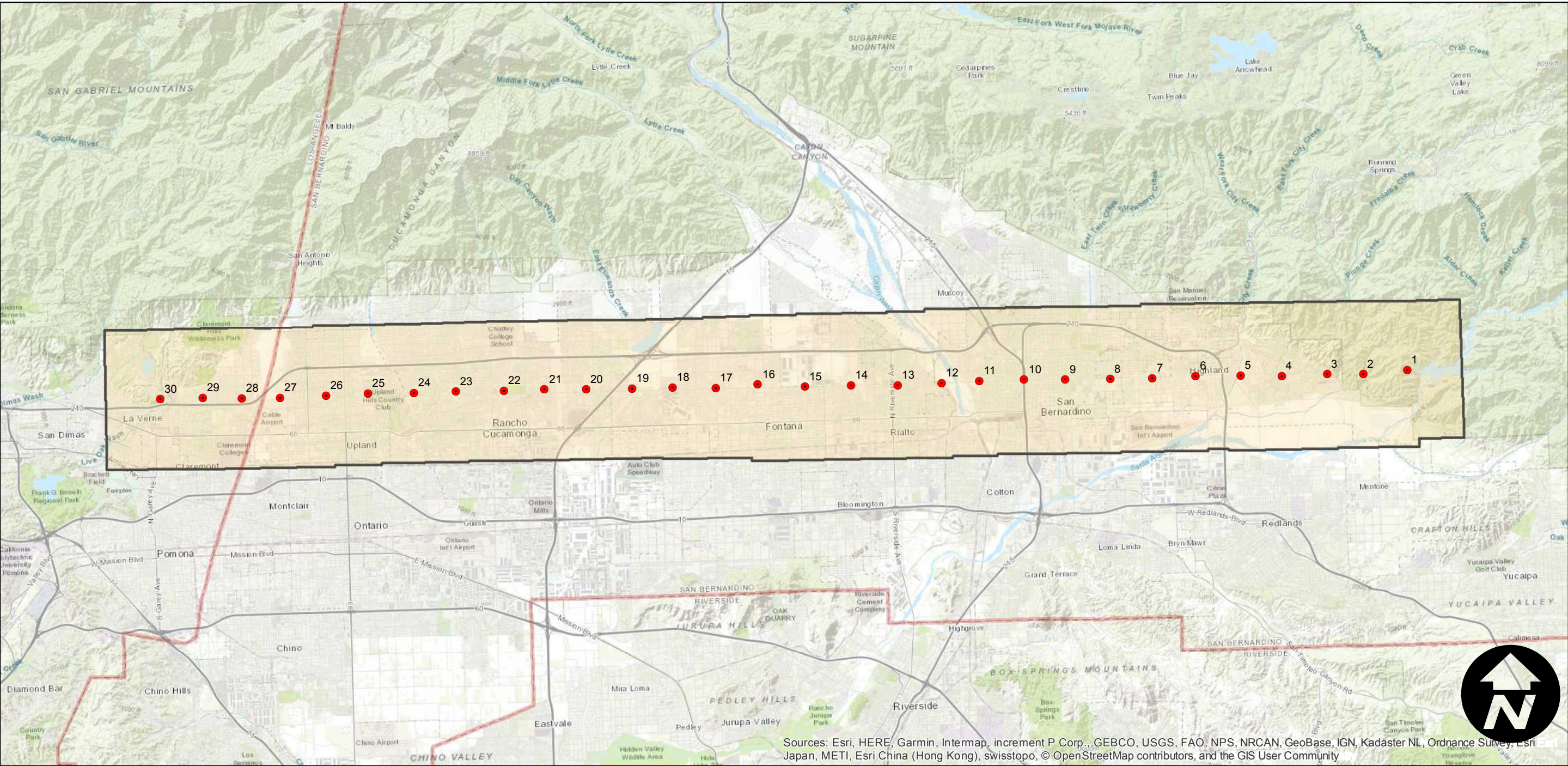
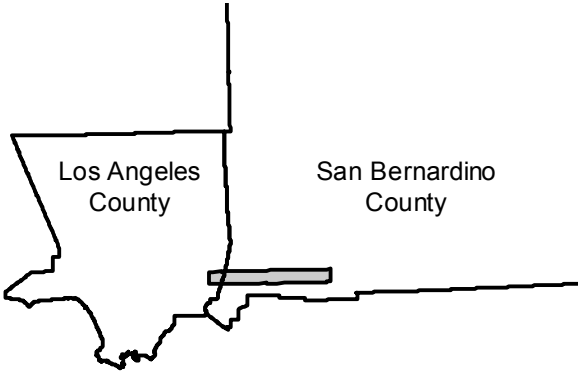
# C-5042

Counties: Los Angeles, San Bernardino  
Flight date(s): 03-15-1938  
Scale: 1:28,800  
Overlap: 60%

Complete Metadata:  
<https://www.library.ucsb.edu/src/airphotos/aerial-photography-information>

Note: Highland to La Verne. Coverage includes San Bernardino, Rialto, Fontana, and Rancho Cucamonga. Imagery acquired from Teledyne, 1986 and Whittier College, January 2013. Nitrate negatives scanned, October 2015.

## FLIGHT LOCATION



0 3 6 12 Miles

Index to Aerial Photography  
Page 1 of 1

Scale of this index: 1:195,000