

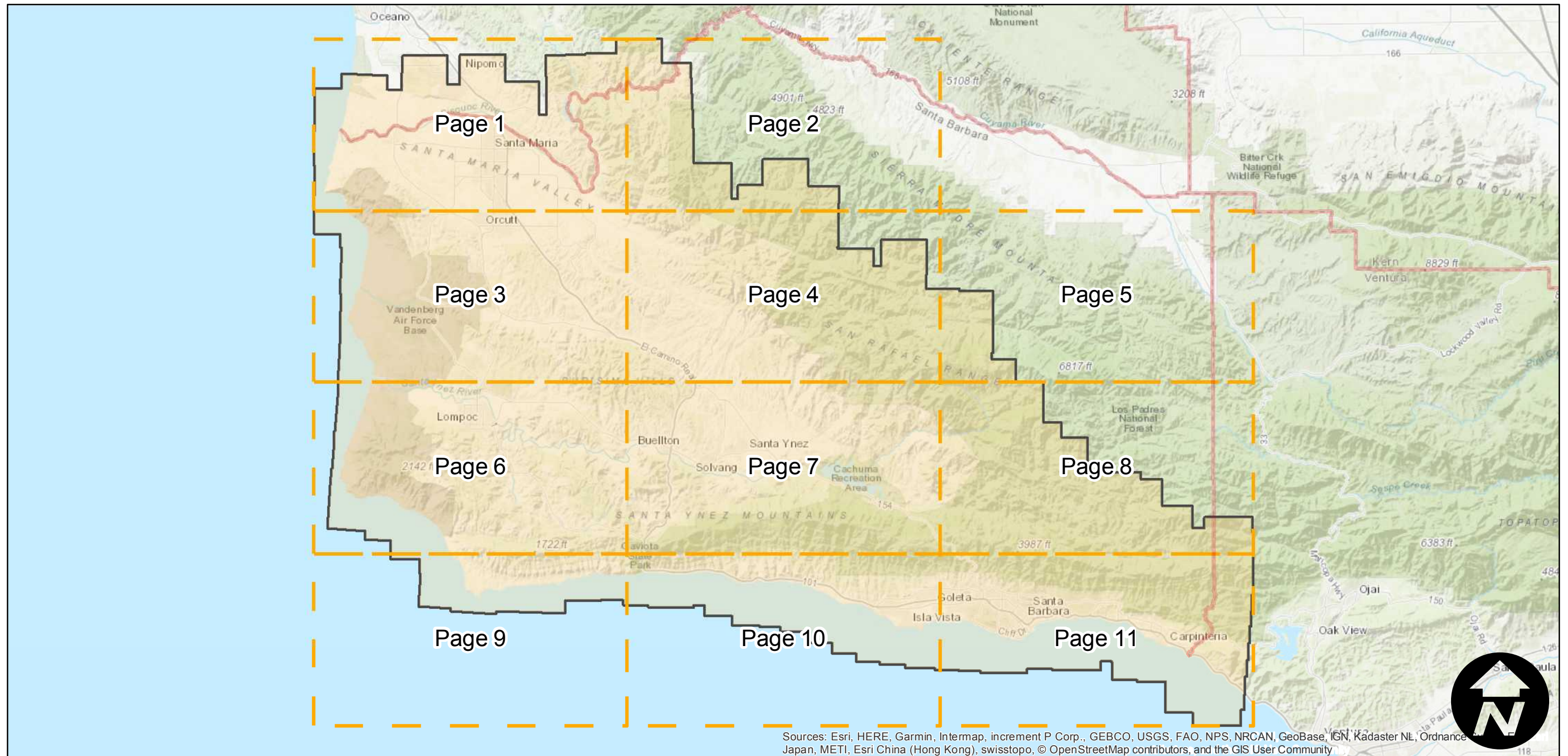
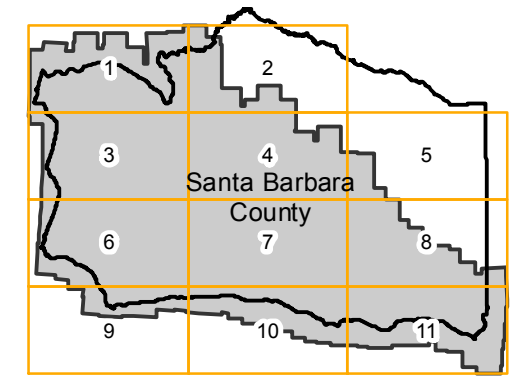
C-4950

Counties: Santa Barbara, San Luis Obispo, Ventura
Flight date(s): 01-01-1938 to 01-31-1938
Scale: 1:24,000
Overlap: 60%

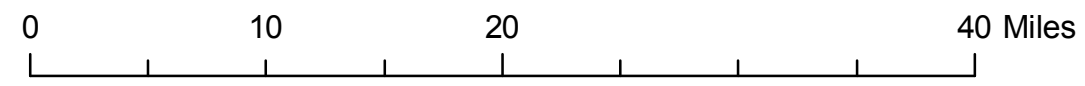
Complete Metadata:
<https://www.library.ucsb.edu/src/airphotos/aerial-photography-information>

Note: Southwest portion of Santa Barbara County. Exact flight date is unknown. Some negatives were made from paper prints held by Santa Barbara County Resource Management Department. See C-4950-CVS for coverage of Cuyama Valley. See C-5140 for coverage of this area at 1:40,000. Nitrate negatives and paper prints acquired from Whittier College, January 2013. Nitrate negatives scanned, October 2015. Santa Barbara/Goleta portion of this flight is available as a digital seamless mosaic.

FLIGHT LOCATION



Sources: Esri, HERE, Garmin, Intermap, increment P Corp., GEBCO, USGS, FAO, NPS, NRCAN, GeoBase, IGN, Kadaster NL, Ordnance Survey, Esri Japan, METI, Esri China (Hong Kong), swisstopo, © OpenStreetMap contributors, and the GIS User Community



Index to Aerial Photography
Page Key

Scale of this index: 1:515,000

C-4950

Counties: Santa Barbara, San Luis Obispo, Ventura

Flight date(s): 01-01-1938 to 01-31-1938

Scale: 1:24,000

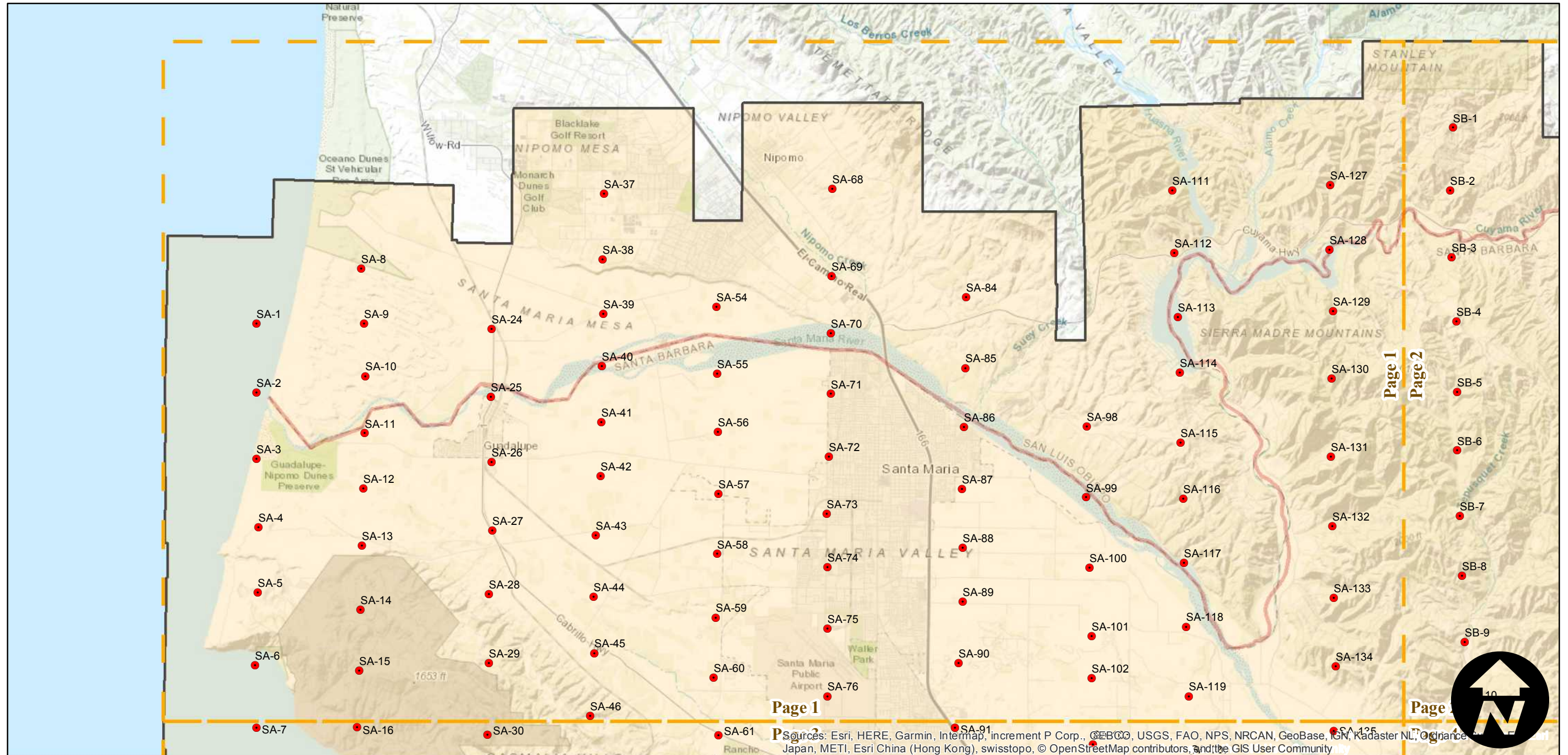
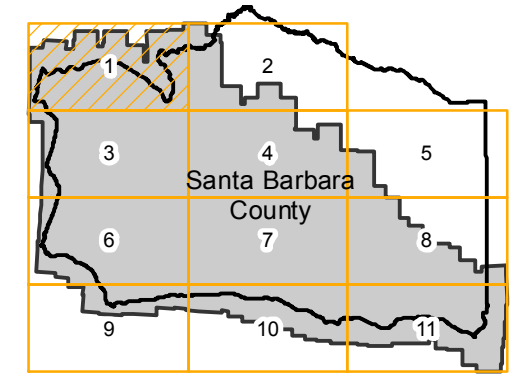
Overlap: 60%

Complete Metadata:

<https://www.library.ucsb.edu/src/airphotos/aerial-photography-information>

Note: Southwest portion of Santa Barbara County. Exact flight date is unknown. Some negatives were made from paper prints held by Santa Barbara County Resource Management Department. See C-4950-CVS for coverage of Cuyama Valley. See C-5140 for coverage of this area at 1:40,000. Nitrate negatives and paper prints acquired from Whittier College, January 2013. Nitrate negatives scanned, October 2015. Santa Barbara/Goleta portion of this flight is available as a digital seamless mosaic.

FLIGHT LOCATION



0 2 4 8 Miles

Index to Aerial Photography
Page 1 of 11

Scale of this index: 1:130,000

Sources: Esri, HERE, Garmin, Intermap, increment P Corp., GEBCO, USGS, FAO, NPS, NRCAN, GeoBase, IGN, Kadaster NL, Ordnance Survey, Esri, METI, Esri China (Hong Kong), swisstopo, © OpenStreetMap contributors, and the GIS User Community

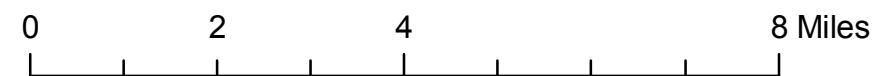
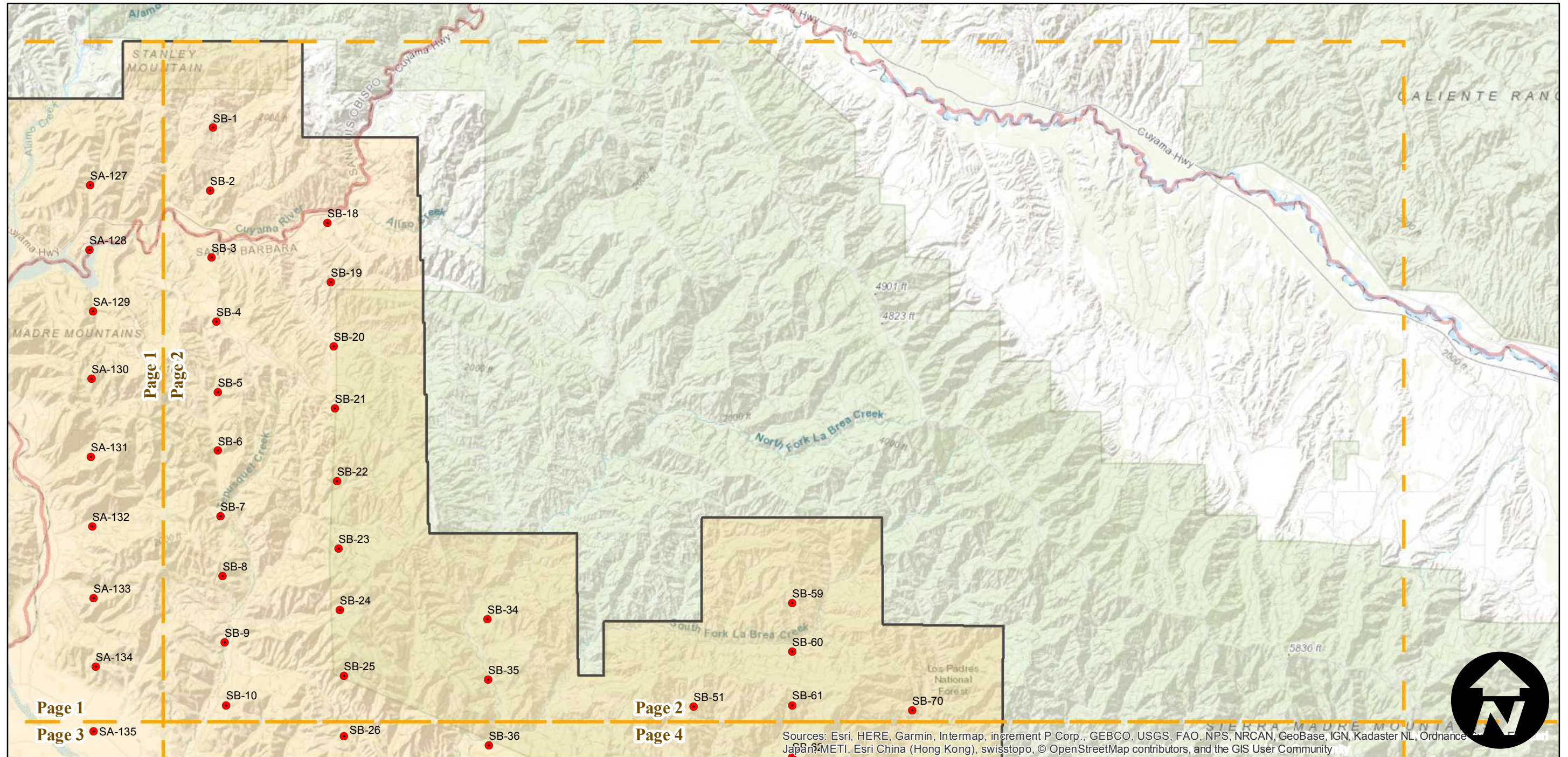
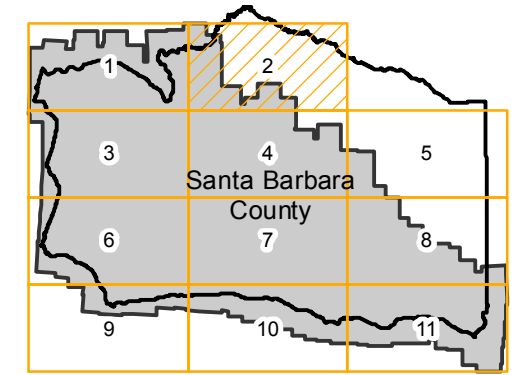
C-4950

Counties: Santa Barbara, San Luis Obispo, Ventura
 Flight date(s): 01-01-1938 to 01-31-1938
 Scale: 1:24,000
 Overlap: 60%

Complete Metadata:
<https://www.library.ucsb.edu/src/airphotos/aerial-photography-information>

Note: Southwest portion of Santa Barbara County. Exact flight date is unknown. Some negatives were made from paper prints held by Santa Barbara County Resource Management Department. See C-4950-CVS for coverage of Cuyama Valley. See C-5140 for coverage of this area at 1:40,000. Nitrate negatives and paper prints acquired from Whittier College, January 2013. Nitrate negatives scanned, October 2015. Santa Barbara/Goleta portion of this flight is available as a digital seamless mosaic.

FLIGHT LOCATION



Sources: Esri, HERE, Garmin, Intermap, increment P Corp., GEBCO, USGS, FAO, NPS, NRCAN, GeoBase, IGN, Kadaster NL, Ordnance Survey, Esri Japan, METI, Esri China (Hong Kong), swisstopo, © OpenStreetMap contributors, and the GIS User Community



C-4950

Counties: Santa Barbara, San Luis Obispo, Ventura

Flight date(s): 01-01-1938 to 01-31-1938

Scale: 1:24,000

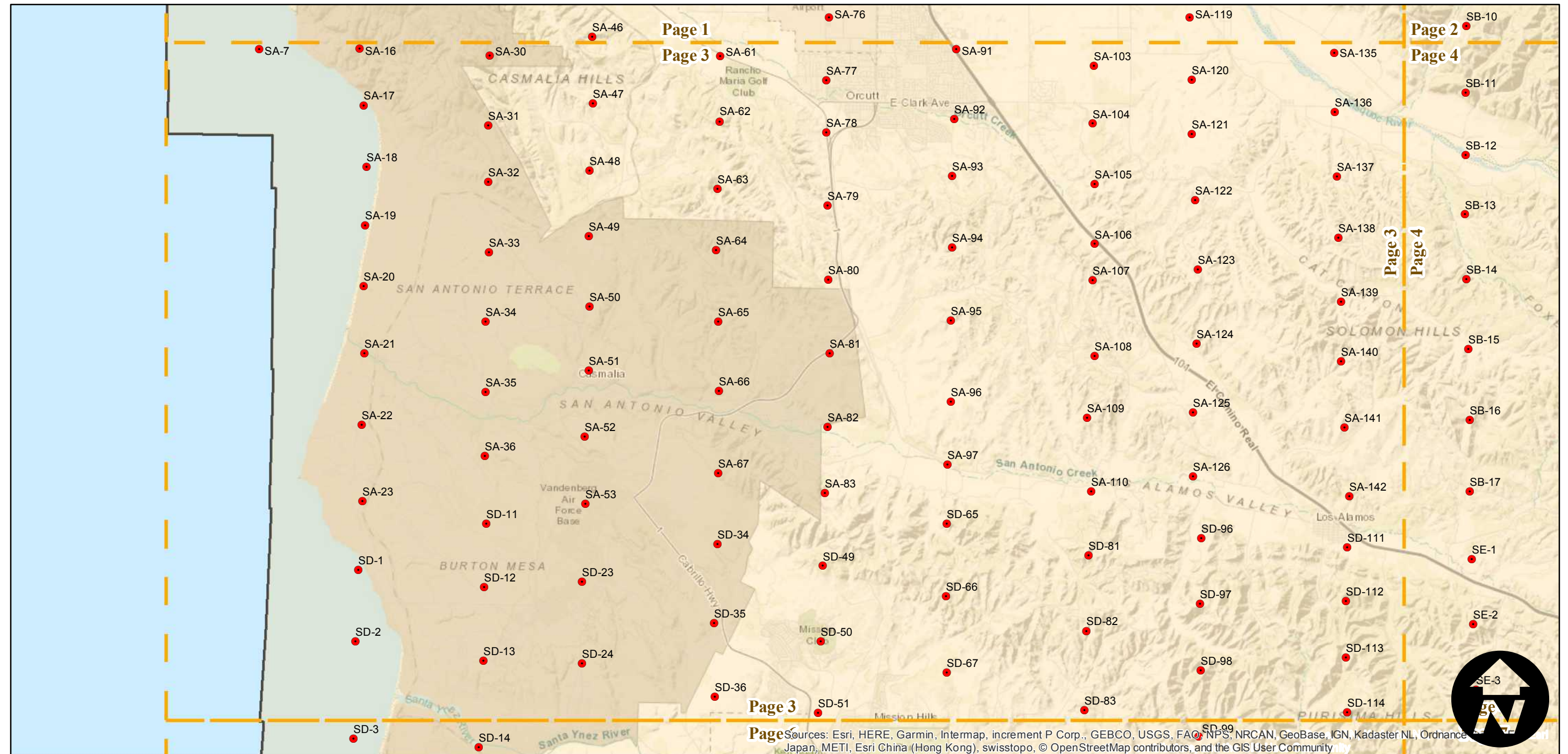
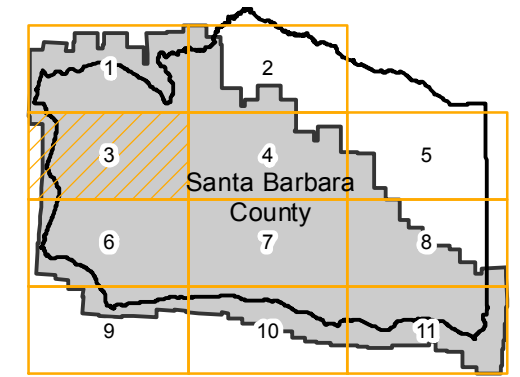
Overlap: 60%

Complete Metadata:

<https://www.library.ucsb.edu/src/airphotos/aerial-photography-information>

Note: Southwest portion of Santa Barbara County. Exact flight date is unknown. Some negatives were made from paper prints held by Santa Barbara County Resource Management Department. See C-4950-CVS for coverage of Cuyama Valley. See C-5140 for coverage of this area at 1:40,000. Nitrate negatives and paper prints acquired from Whittier College, January 2013. Nitrate negatives scanned, October 2015. Santa Barbara/Goleta portion of this flight is available as a digital seamless mosaic.

FLIGHT LOCATION



0 2 4 8 Miles

Index to Aerial Photography
Page 3 of 11

Scale of this index: 1:130,000

Sources: Esri, HERE, Garmin, Intermap, increment P Corp., GEBCO, USGS, FAO, NPS, NRCAN, GeoBase, IGN, Kadaster NL, Ordnance Survey, Esri China (Hong Kong), swisstopo, © OpenStreetMap contributors, and the GIS User Community

C-4950

Counties: Santa Barbara, San Luis Obispo, Ventura

Flight date(s): 01-01-1938 to 01-31-1938

Scale: 1:24,000

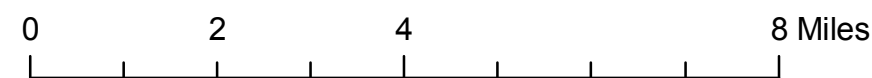
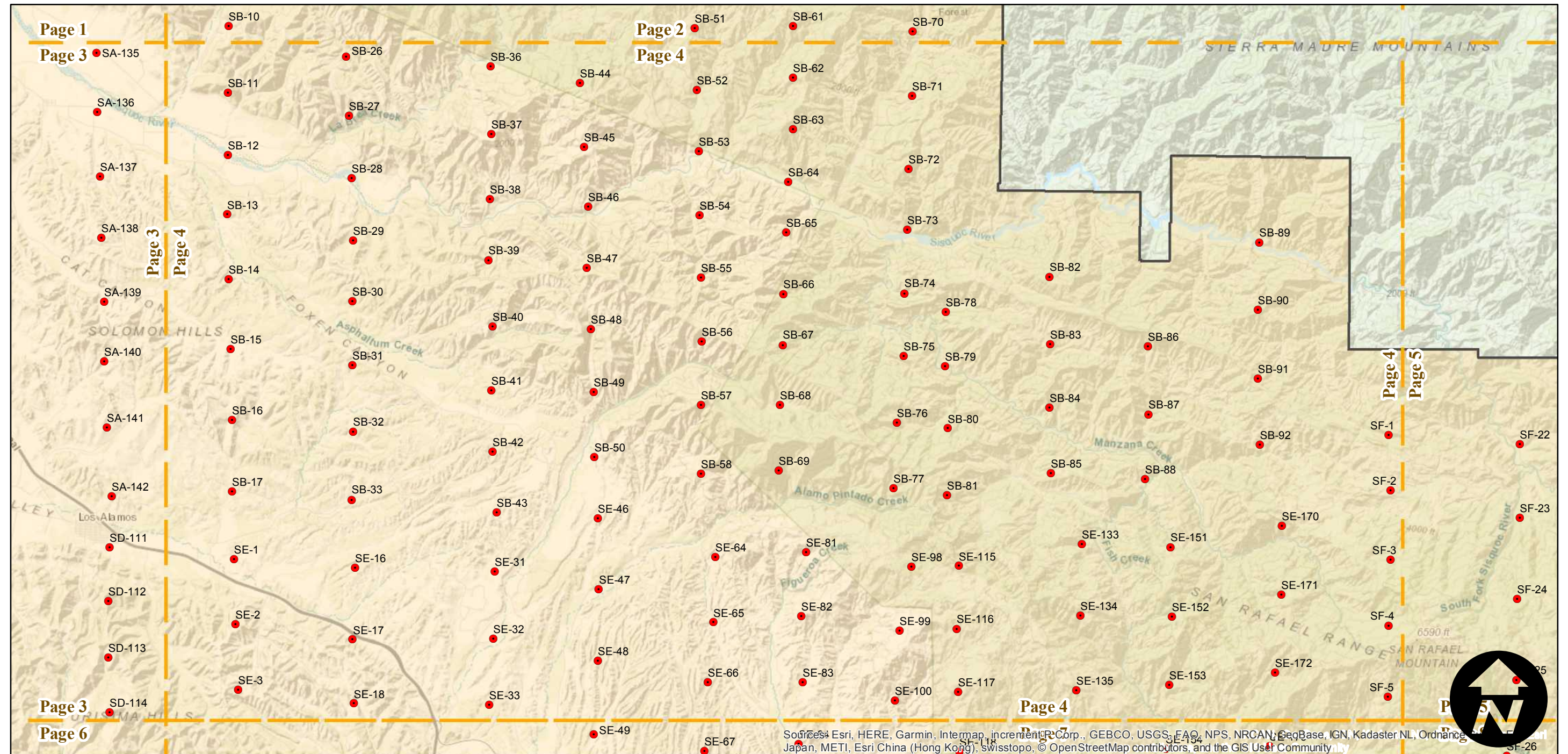
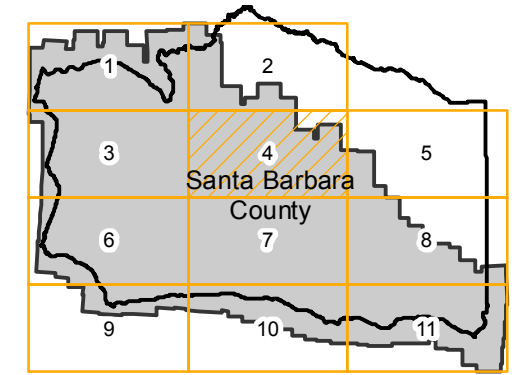
Overlap: 60%

Complete Metadata:

<https://www.library.ucsb.edu/src/airphotos/aerial-photography-information>

Note: Southwest portion of Santa Barbara County. Exact flight date is unknown. Some negatives were made from paper prints held by Santa Barbara County Resource Management Department. See C-4950-CVS for coverage of Cuyama Valley. See C-5140 for coverage of this area at 1:40,000. Nitrate negatives and paper prints acquired from Whittier College, January 2013. Nitrate negatives scanned, October 2015. Santa Barbara/Goleta portion of this flight is available as a digital seamless mosaic.

FLIGHT LOCATION



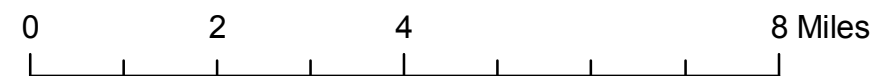
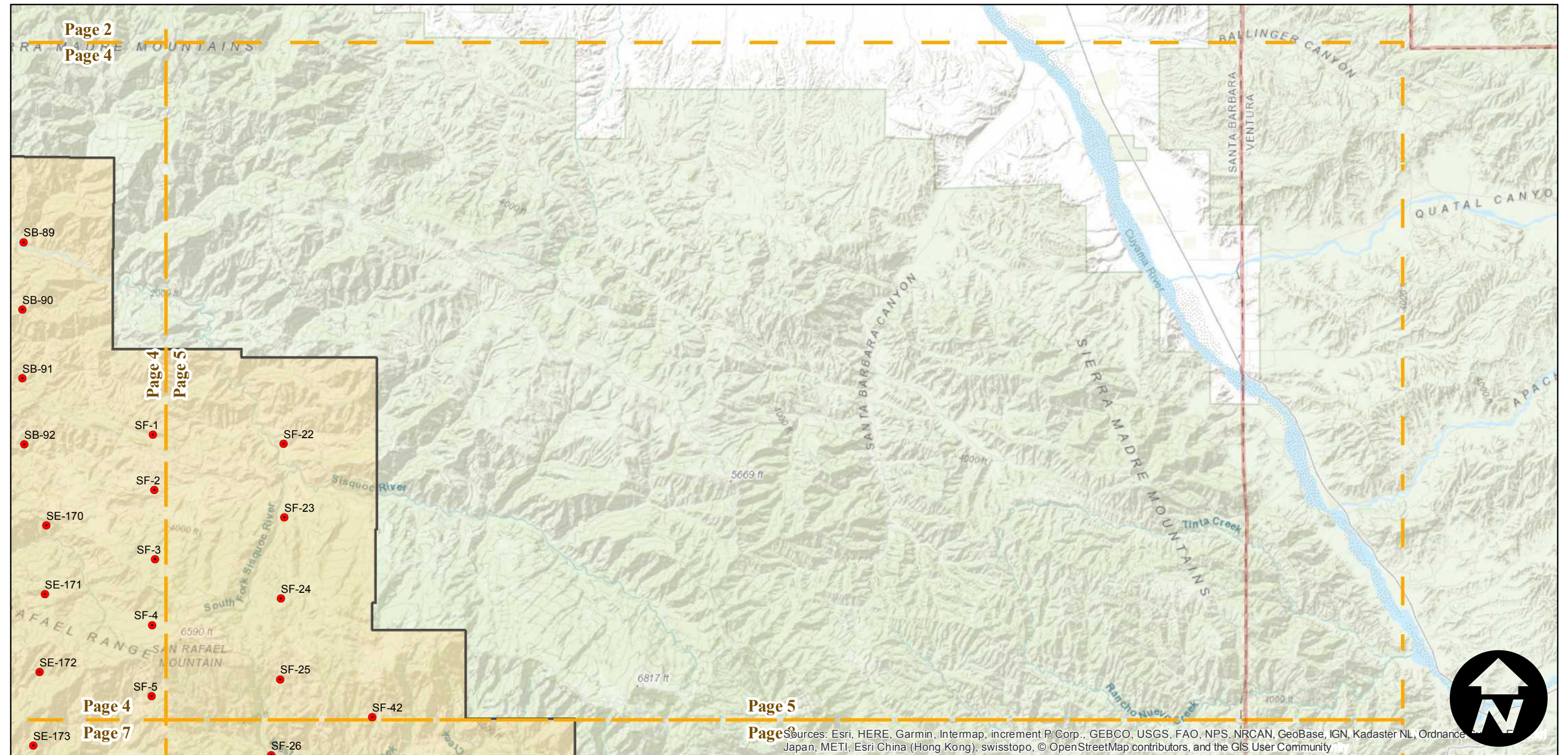
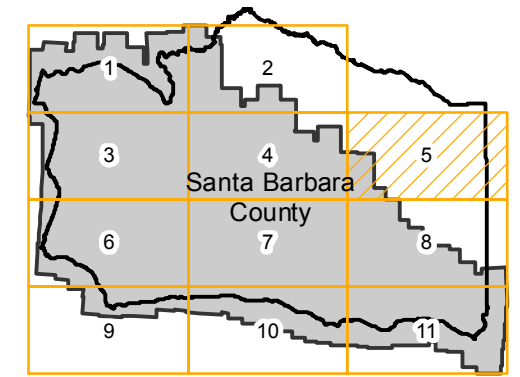
C-4950

Counties: Santa Barbara, San Luis Obispo, Ventura
Flight date(s): 01-01-1938 to 01-31-1938
Scale: 1:24,000
Overlap: 60%

Complete Metadata:
<https://www.library.ucsb.edu/src/airphotos/aerial-photography-information>

Note: Southwest portion of Santa Barbara County. Exact flight date is unknown. Some negatives were made from paper prints held by Santa Barbara County Resource Management Department. See C-4950-CVS for coverage of Cuyama Valley. See C-5140 for coverage of this area at 1:40,000. Nitrate negatives and paper prints acquired from Whittier College, January 2013. Nitrate negatives scanned, October 2015. Santa Barbara/Goleta portion of this flight is available as a digital seamless mosaic.

FLIGHT LOCATION



Page 5
Sources: Esri, HERE, Garmin, Intermap, increment P Corp., GEBCO, USGS, FAO, NPS, NRCAN, GeoBase, IGN, Kadaster NL, Ordnance Survey, Esri Japan, METI, Esri China (Hong Kong), swisstopo, © OpenStreetMap contributors, and the GIS User Community

C-4950

Counties: Santa Barbara, San Luis Obispo, Ventura

Flight date(s): 01-01-1938 to 01-31-1938

Scale: 1:24,000

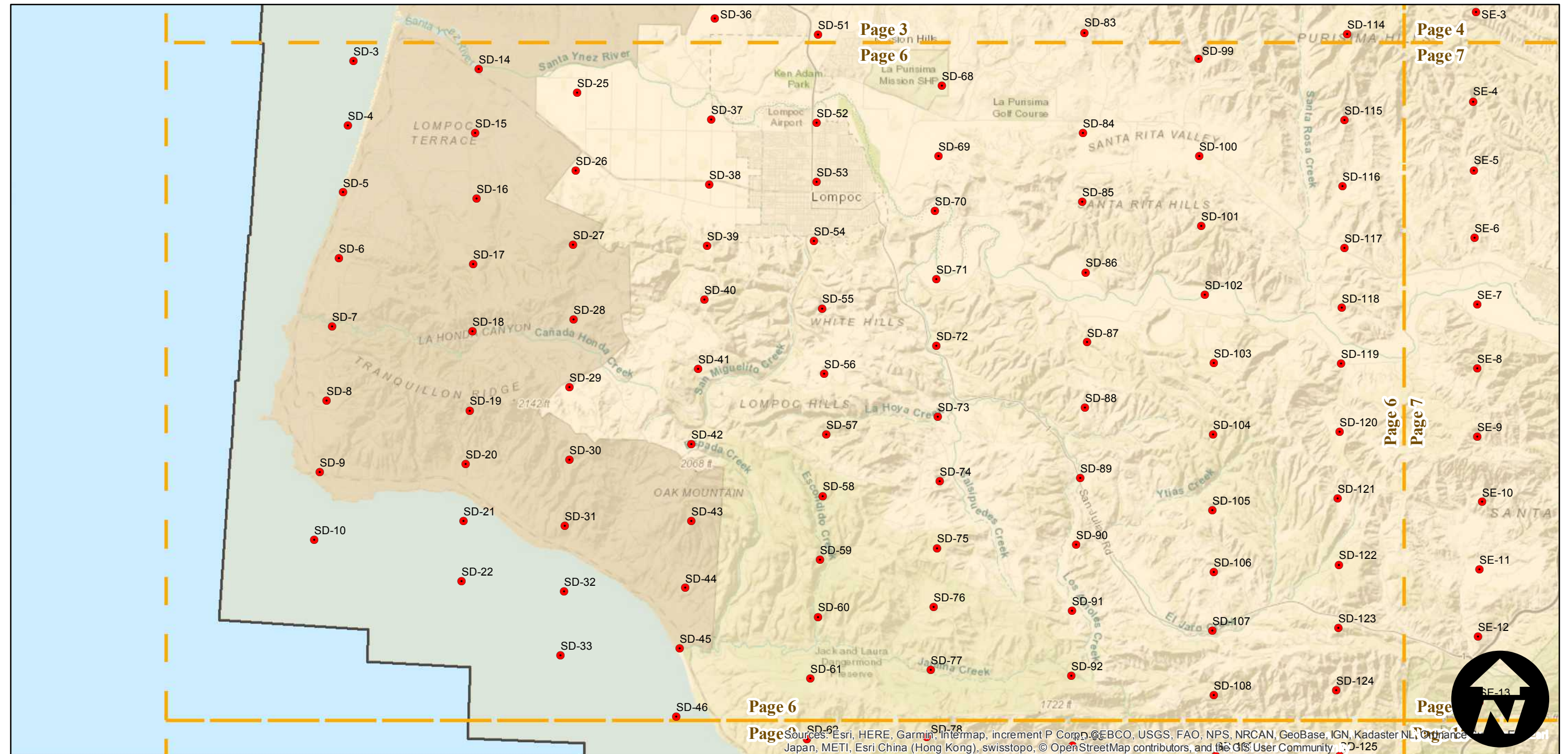
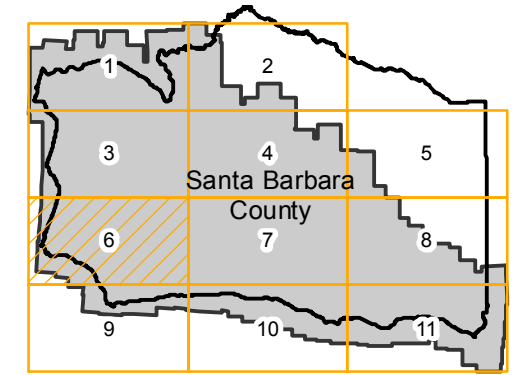
Overlap: 60%

Complete Metadata:

<https://www.library.ucsb.edu/src/airphotos/aerial-photography-information>

Note: Southwest portion of Santa Barbara County. Exact flight date is unknown. Some negatives were made from paper prints held by Santa Barbara County Resource Management Department. See C-4950-CVS for coverage of Cuyama Valley. See C-5140 for coverage of this area at 1:40,000. Nitrate negatives and paper prints acquired from Whittier College, January 2013. Nitrate negatives scanned, October 2015. Santa Barbara/Goleta portion of this flight is available as a digital seamless mosaic.

FLIGHT LOCATION



0 2 4 8 Miles

Index to Aerial Photography
Page 6 of 11

Scale of this index: 1:130,000

Sources: Esri, HERE, Garmin, Intermap, increment P Corp., GEBCO, USGS, FAO, NPS, NRCAN, GeoBase, IGN, Kadaster NL, Ordnance Survey, Esri China (Hong Kong), Swisstopo, © OpenStreetMap contributors, and the GIS User Community

C-4950

Counties: Santa Barbara, San Luis Obispo, Ventura

Flight date(s): 01-01-1938 to 01-31-1938

Scale: 1:24,000

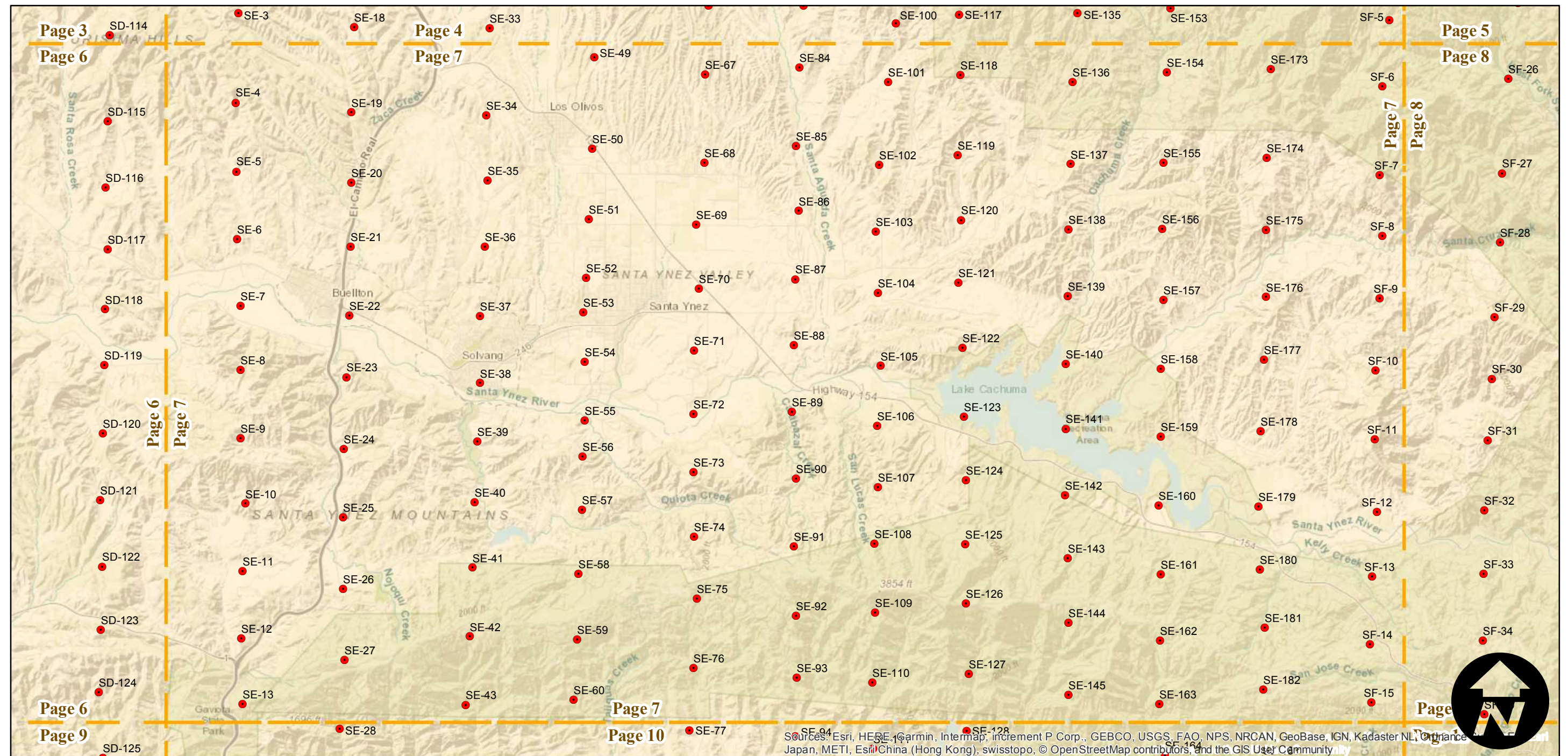
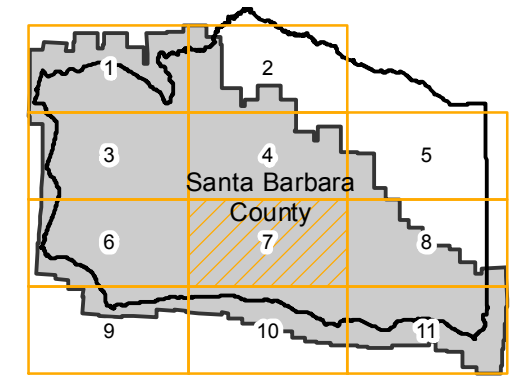
Overlap: 60%

Complete Metadata:

<https://www.library.ucsb.edu/src/airphotos/aerial-photography-information>

Note: Southwest portion of Santa Barbara County. Exact flight date is unknown. Some negatives were made from paper prints held by Santa Barbara County Resource Management Department. See C-4950-CVS for coverage of Cuyama Valley. See C-5140 for coverage of this area at 1:40,000. Nitrate negatives and paper prints acquired from Whittier College, January 2013. Nitrate negatives scanned, October 2015. Santa Barbara/Goleta portion of this flight is available as a digital seamless mosaic.

FLIGHT LOCATION



0 2 4 8 Miles

Index to Aerial Photography
Page 7 of 11

Scale of this index: 1:130,000

Sources: Esri, HERE, Garmin, Intermap, increment P Corp., GEBCO, USGS, FAO, NPS, NRCAN, GeoBase, IGN, Kadaster NL, Ordnance Survey, Esri, China (Hong Kong), swisstopo, © OpenStreetMap contributors, and the GIS User Community

C-4950

Counties: Santa Barbara, San Luis Obispo, Ventura

Flight date(s): 01-01-1938 to 01-31-1938

Scale: 1:24,000

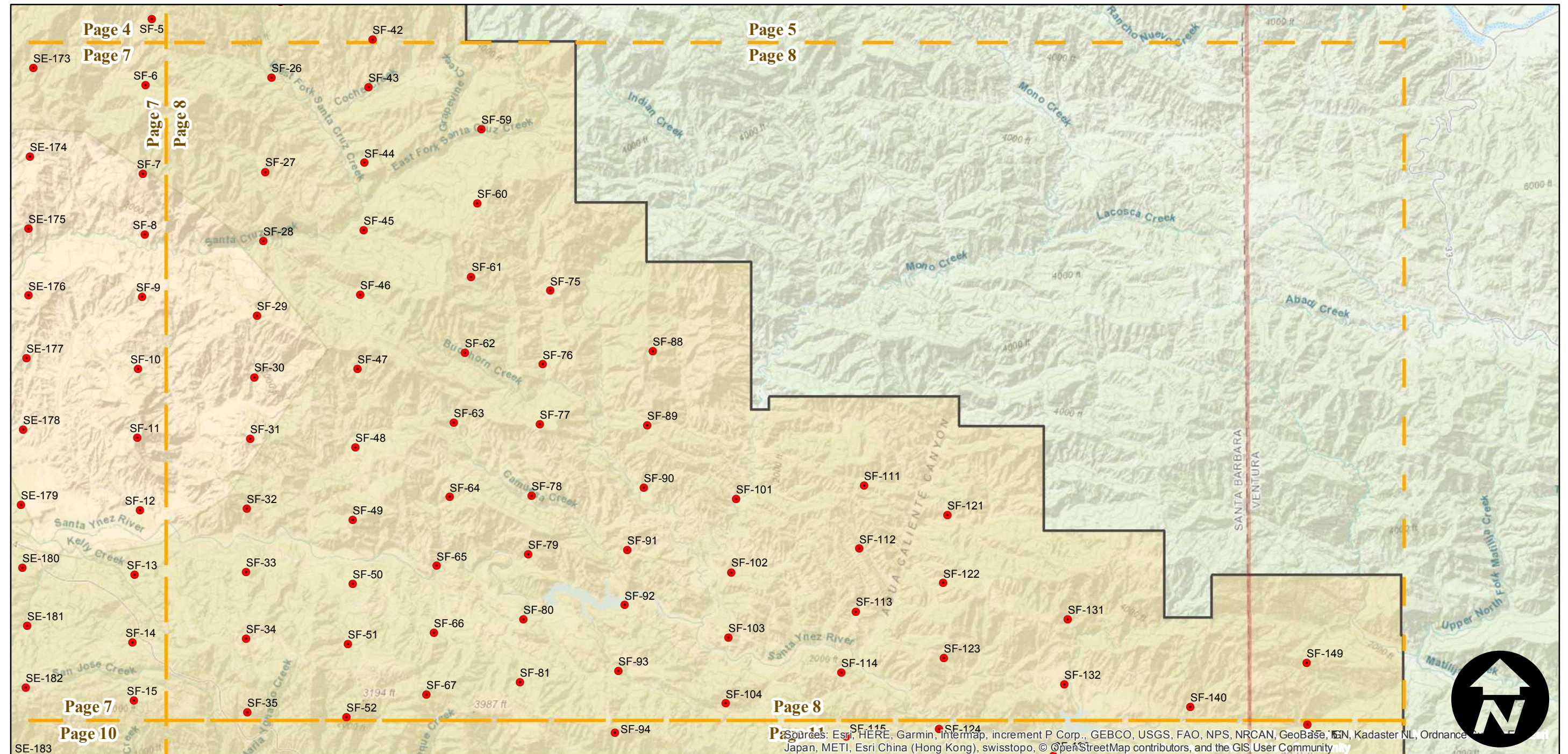
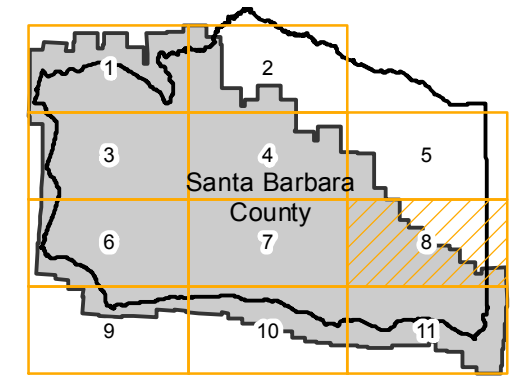
Overlap: 60%

Complete Metadata:

<https://www.library.ucsb.edu/src/airphotos/aerial-photography-information>

Note: Southwest portion of Santa Barbara County. Exact flight date is unknown. Some negatives were made from paper prints held by Santa Barbara County Resource Management Department. See C-4950-CVS for coverage of Cuyama Valley. See C-5140 for coverage of this area at 1:40,000. Nitrate negatives and paper prints acquired from Whittier College, January 2013. Nitrate negatives scanned, October 2015. Santa Barbara/Goleta portion of this flight is available as a digital seamless mosaic.

FLIGHT LOCATION



0 2 4 8 Miles

Index to Aerial Photography
Page 8 of 11

Scale of this index: 1:130,000

Sources: Esri, HERE, Garmin, Intermap, increment P Corp., GEBCO, USGS, FAO, NPS, NRCAN, GeoBase, IGN, Kadaster NL, Ordnance Survey, Esri, METI, Esri China (Hong Kong), swisstopo, © OpenStreetMap contributors, and the GIS User Community

C-4950

Counties: Santa Barbara, San Luis Obispo, Ventura

Flight date(s): 01-01-1938 to 01-31-1938

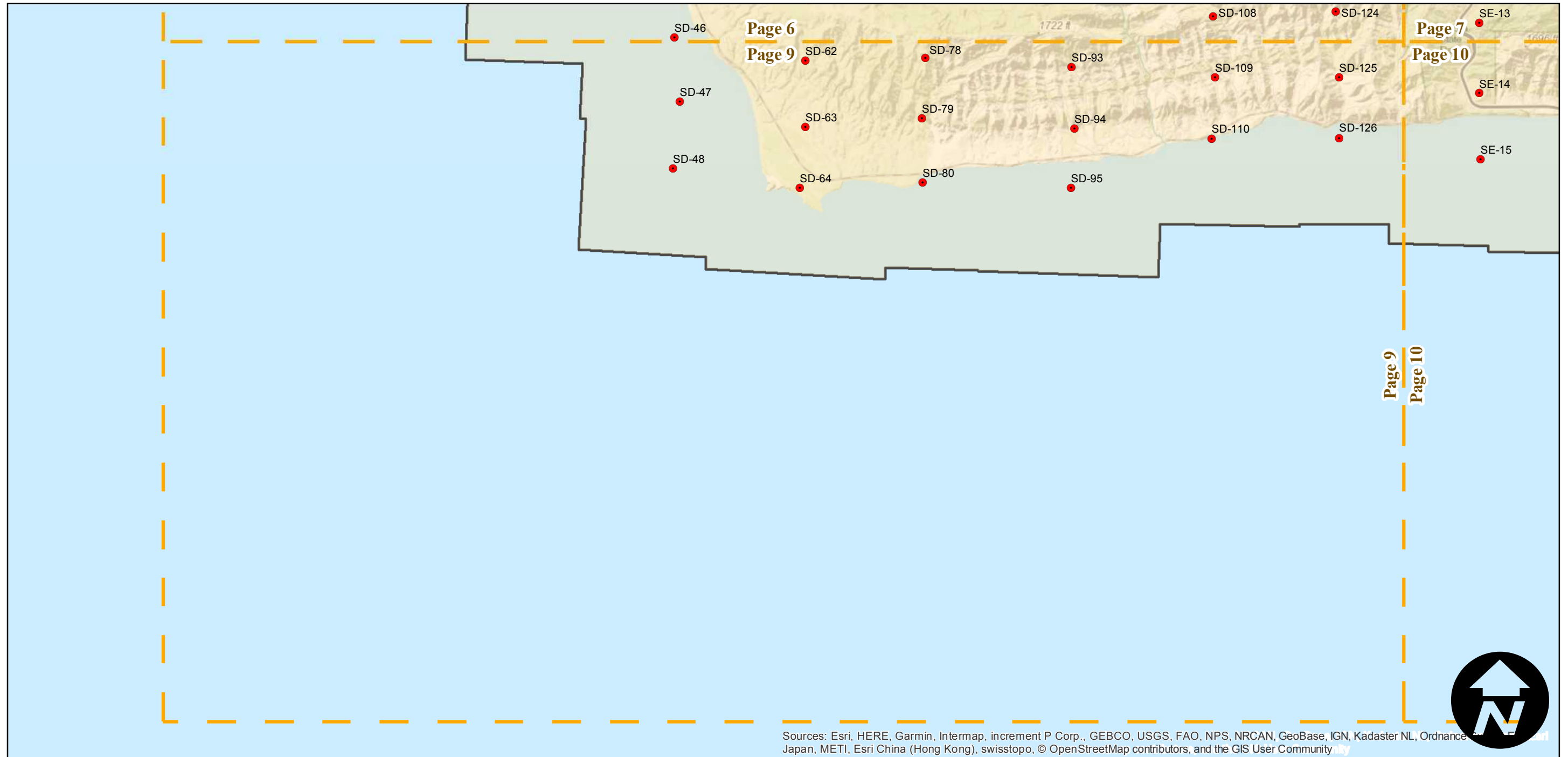
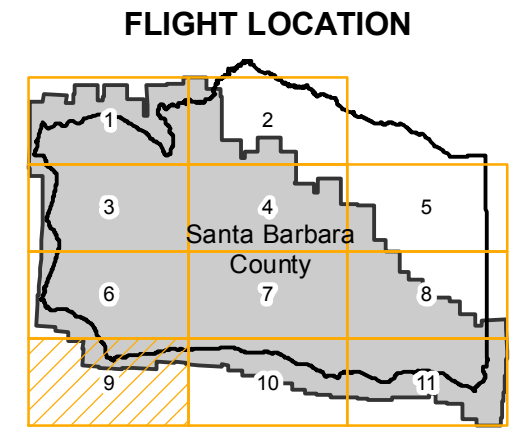
Scale: 1:24,000

Overlap: 60%

Complete Metadata:

<https://www.library.ucsb.edu/src/airphotos/aerial-photography-information>

Note: Southwest portion of Santa Barbara County. Exact flight date is unknown. Some negatives were made from paper prints held by Santa Barbara County Resource Management Department. See C-4950-CVS for coverage of Cuyama Valley. See C-5140 for coverage of this area at 1:40,000. Nitrate negatives and paper prints acquired from Whittier College, January 2013. Nitrate negatives scanned, October 2015. Santa Barbara/Goleta portion of this flight is available as a digital seamless mosaic.



0 2 4 8 Miles

Index to Aerial Photography
Page 9 of 11

Scale of this index: 1:130,000

C-4950

Counties: Santa Barbara, San Luis Obispo, Ventura

Flight date(s): 01-01-1938 to 01-31-1938

Scale: 1:24,000

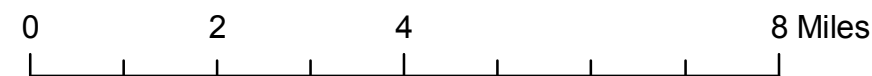
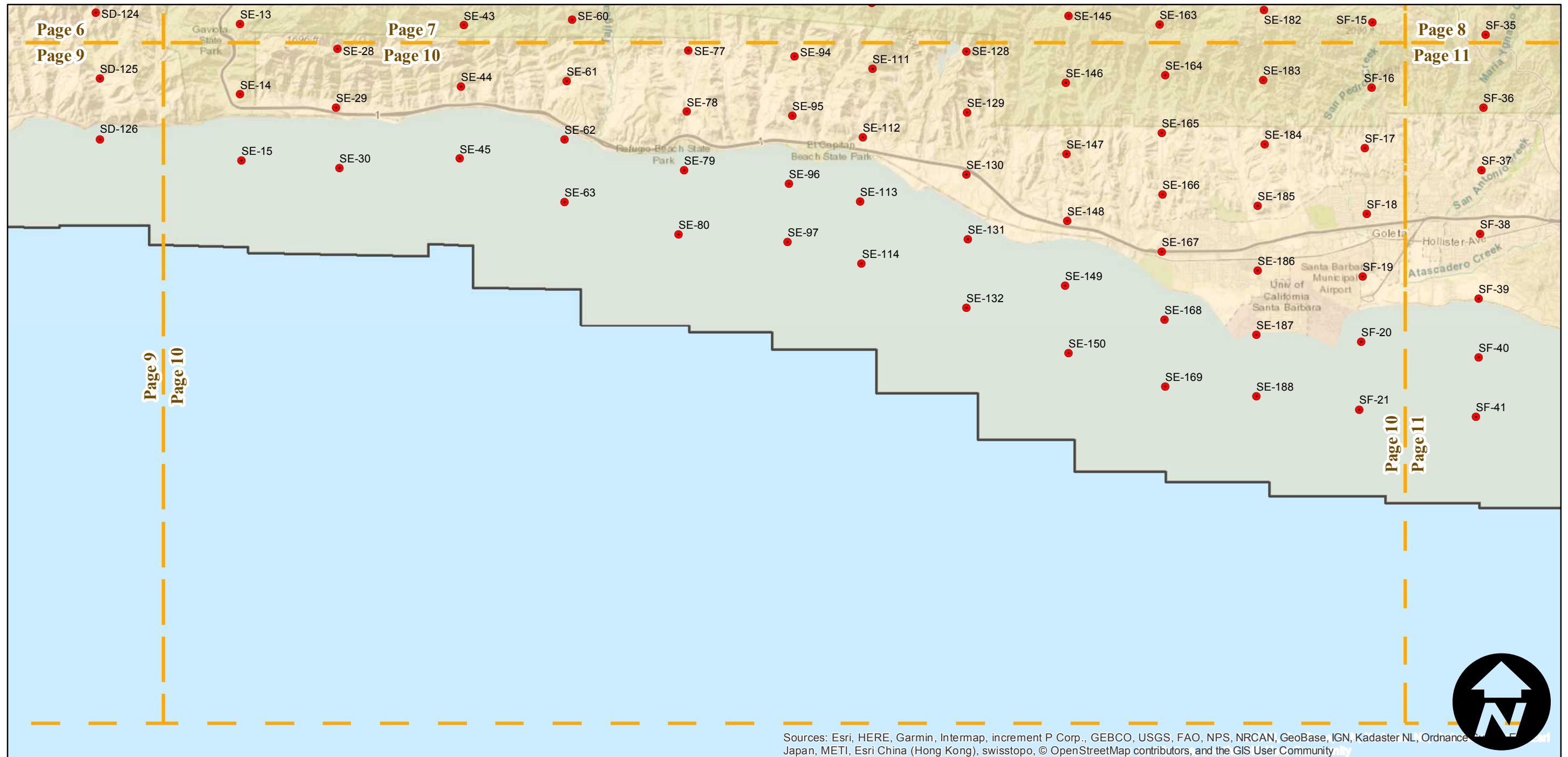
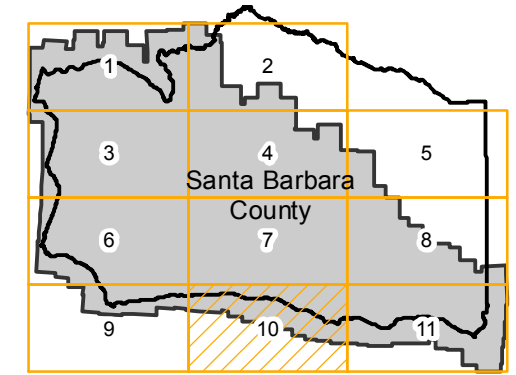
Overlap: 60%

Complete Metadata:

<https://www.library.ucsb.edu/src/airphotos/aerial-photography-information>

Note: Southwest portion of Santa Barbara County. Exact flight date is unknown. Some negatives were made from paper prints held by Santa Barbara County Resource Management Department. See C-4950-CVS for coverage of Cuyama Valley. See C-5140 for coverage of this area at 1:40,000. Nitrate negatives and paper prints acquired from Whittier College, January 2013. Nitrate negatives scanned, October 2015. Santa Barbara/Goleta portion of this flight is available as a digital seamless mosaic.

FLIGHT LOCATION



Sources: Esri, HERE, Garmin, Intermap, increment P Corp., GEBCO, USGS, FAO, NPS, NRCAN, GeoBase, IGN, Kadaster NL, Ordnance Survey, Esri Japan, METI, Esri China (Hong Kong), swisstopo, © OpenStreetMap contributors, and the GIS User Community

C-4950

Counties: Santa Barbara, San Luis Obispo, Ventura

Flight date(s): 01-01-1938 to 01-31-1938

Scale: 1:24,000

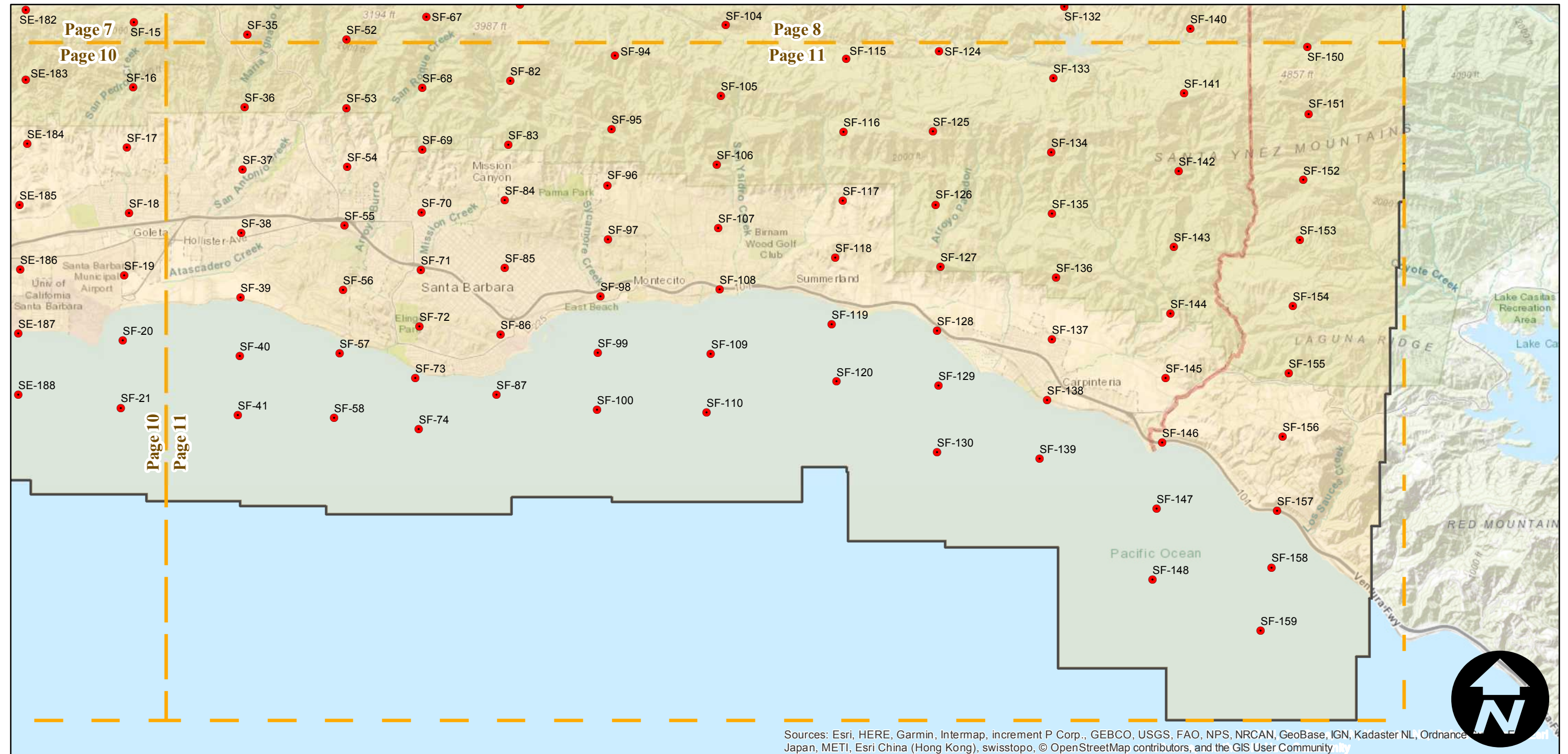
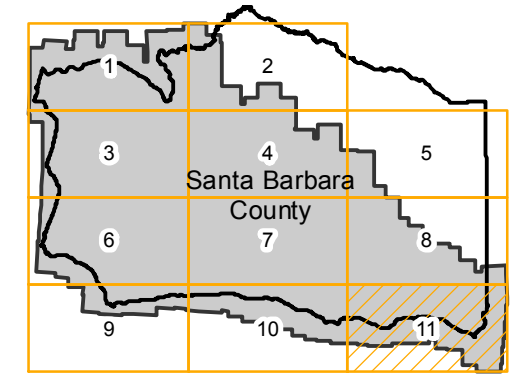
Overlap: 60%

Complete Metadata:

<https://www.library.ucsb.edu/src/airphotos/aerial-photography-information>

Note: Southwest portion of Santa Barbara County. Exact flight date is unknown. Some negatives were made from paper prints held by Santa Barbara County Resource Management Department. See C-4950-CVS for coverage of Cuyama Valley. See C-5140 for coverage of this area at 1:40,000. Nitrate negatives and paper prints acquired from Whittier College, January 2013. Nitrate negatives scanned, October 2015. Santa Barbara/Goleta portion of this flight is available as a digital seamless mosaic.

FLIGHT LOCATION



Sources: Esri, HERE, Garmin, Intermap, increment P Corp., GEBCO, USGS, FAO, NPS, NRCAN, GeoBase, IGN, Kadaster NL, Ordnance Survey, Esri Japan, METI, Esri China (Hong Kong), swisstopo, © OpenStreetMap contributors, and the GIS User Community

