

C-44

Counties: Ventura

Flight date(s): 01-01-1927 to 12-31-1927

Scale: 1:12,000

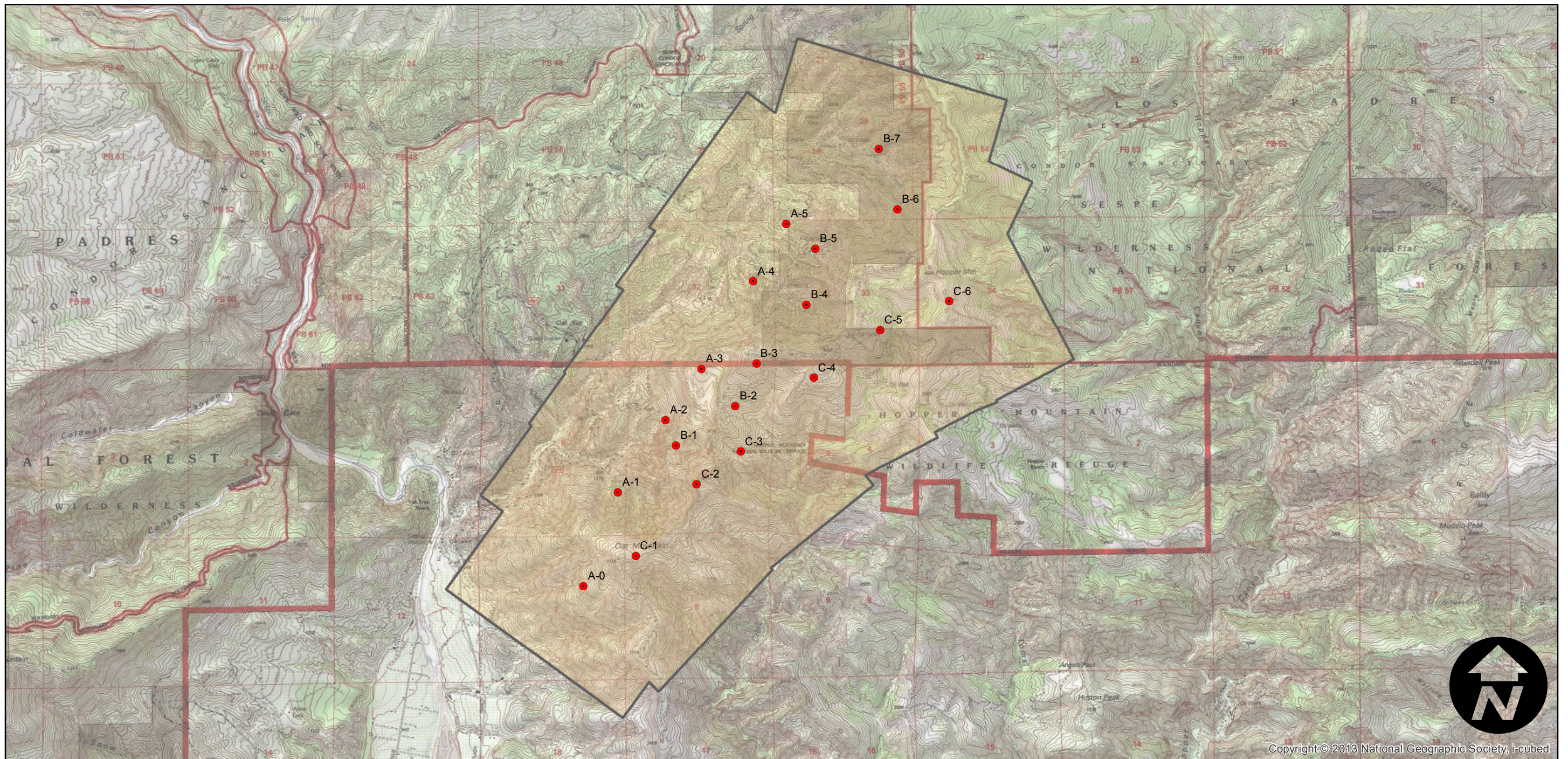
Overlap: 60%

Complete Metadata:

<http://www.library.ucsb.edu/mil/aerial-photography-tools>

Note: Area between Little Sespe Creek and Hopper Mountain (north of Filmore). Acquired from Whittier College, January 2013.

FLIGHT LOCATION



0 0.5 1 2 Miles

Index to Aerial Photography
Page 1 of 1

Scale of this index: 1:45,000