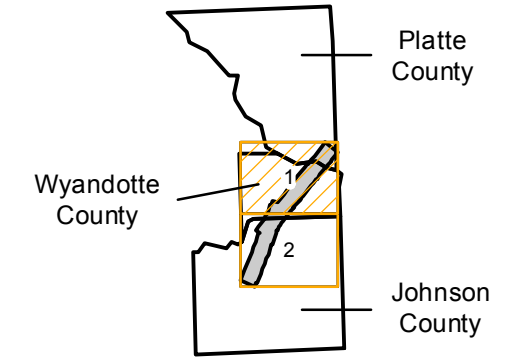


C-4375

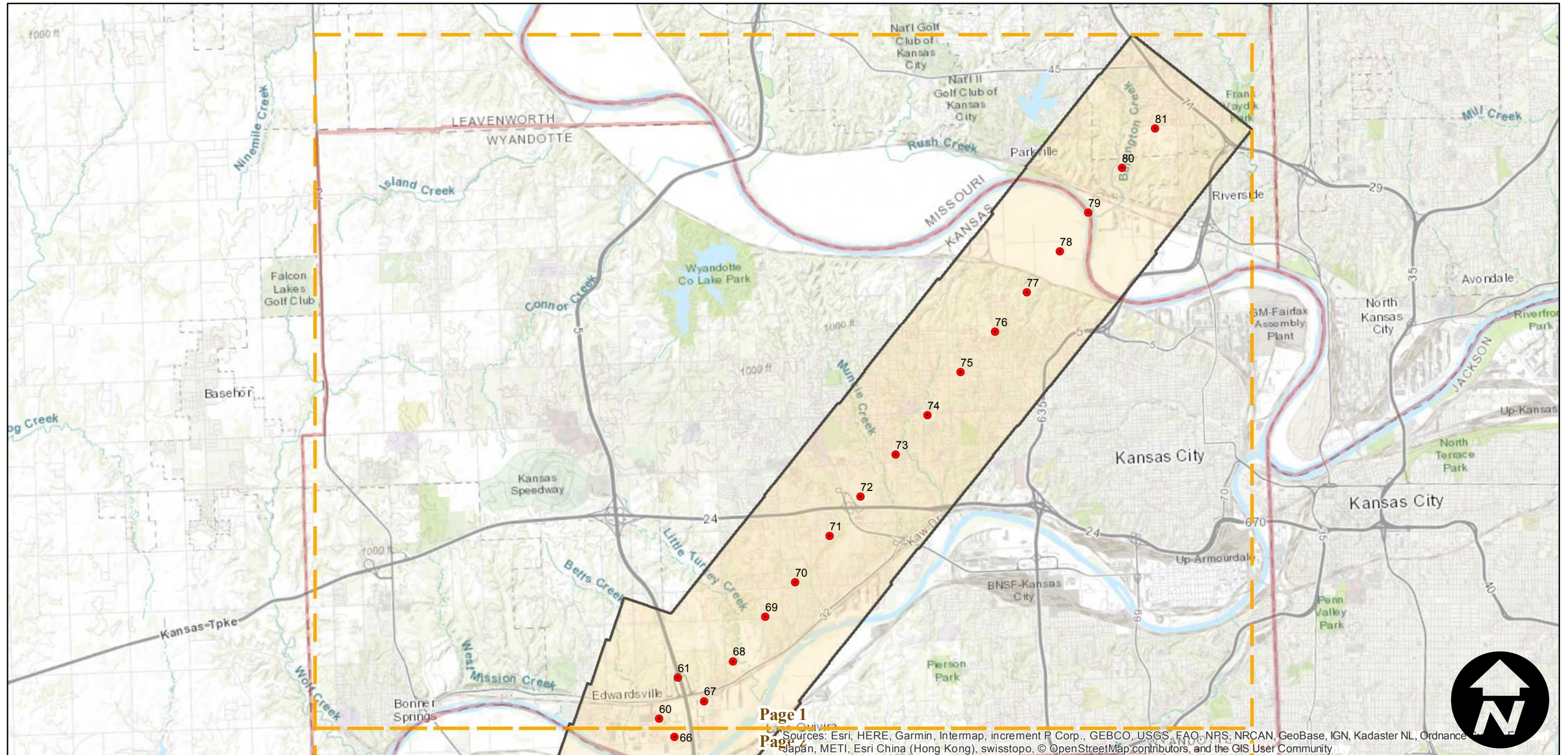
Counties: Wyandotte (Kansas), Johnson (Kansas), Platte (Missouri)
Flight date(s): 02-01-1937 to 02-28-1937
Scale: 1:18,000
Overlap: 60%

Note: Olathe to Edwardsville to Parkville. Exact flight date is unknown. Imagery acquired January 2013. Nitrate negatives scanned, July 2015.

FLIGHT LOCATION



Complete Metadata:
<https://www.library.ucsb.edu/src/airphotos/aerial-photography-information>



0 2 4 8 Miles

Index to Aerial Photography
Page 1 of 2

Scale of this index: 1:110,000

Page 1
Page 2
Sources: Esri, HERE, Garmin, Intermap, increment P Corp., GEBCO, USGS, FAO, NPS, NRCAN, GeoBase, IGN, Kadaster NL, Ordnance Survey, Esri Japan, METI, Esri China (Hong Kong), swisstopo, © OpenStreetMap contributors, and the GIS User Community

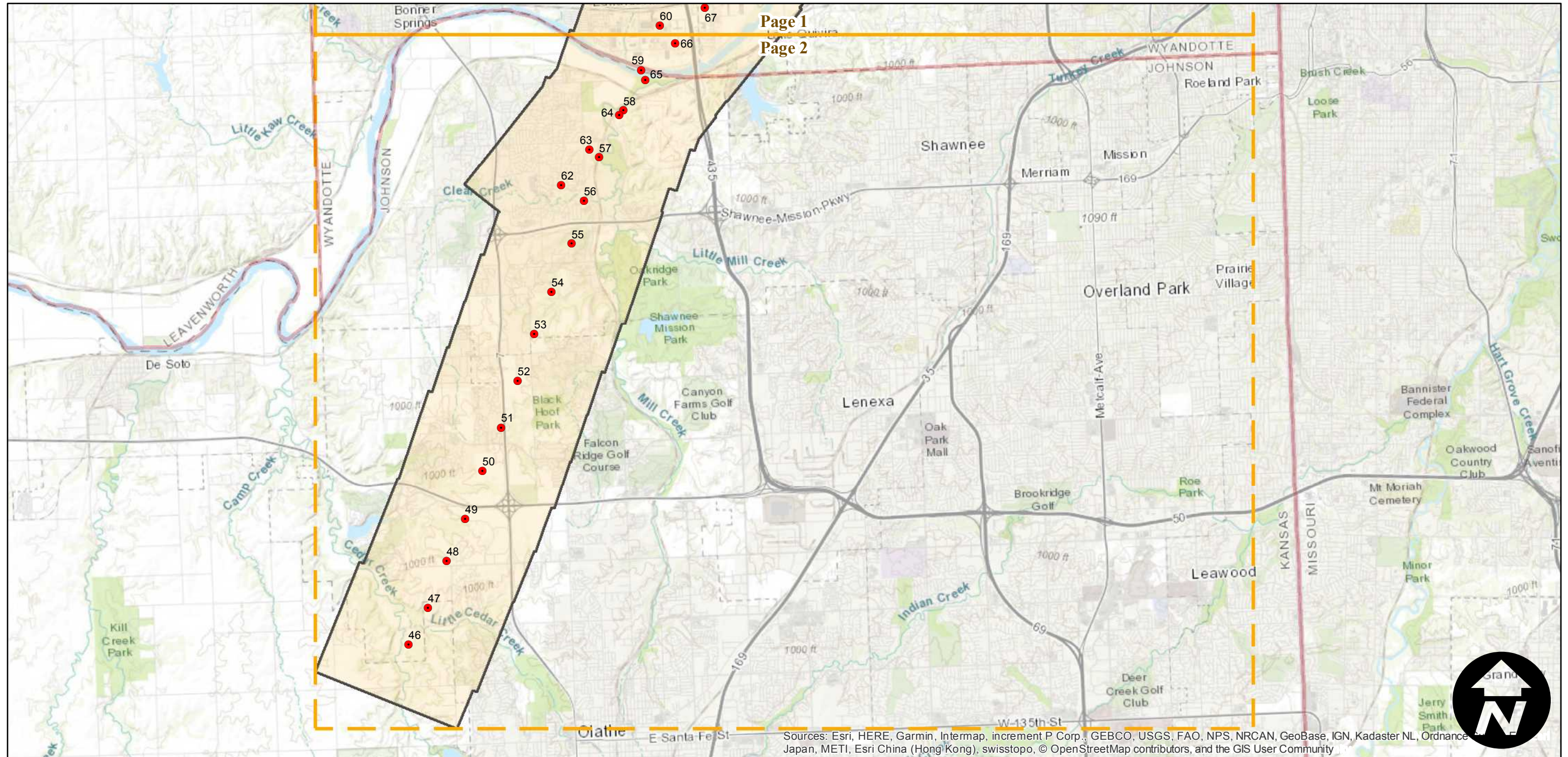
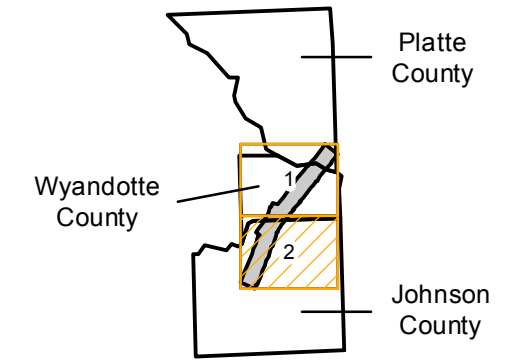
C-4375

Counties: Wyandotte (Kansas), Johnson (Kansas), Platte (Missouri)
Flight date(s): 02-01-1937 to 02-28-1937
Scale: 1:18,000
Overlap: 60%

Note: Olathe to Edwardsville to Parkville. Exact flight date is unknown. Imagery acquired January 2013. Nitrate negatives scanned, July 2015.

Complete Metadata:
<https://www.library.ucsb.edu/src/airphotos/aerial-photography-information>

FLIGHT LOCATION



Page 1
Page 2

0 2 4 8 Miles

Index to Aerial Photography
Page 2 of 2

Scale of this index: 1:110,000

Sources: Esri, HERE, Garmin, Intermap, increment P Corp., GEBCO, USGS, FAO, NPS, NRCAN, GeoBase, IGN, Kadaster NL, Ordnance Survey, Esri Japan, METI, Esri China (Hong Kong), swisstopo, © OpenStreetMap contributors, and the GIS User Community