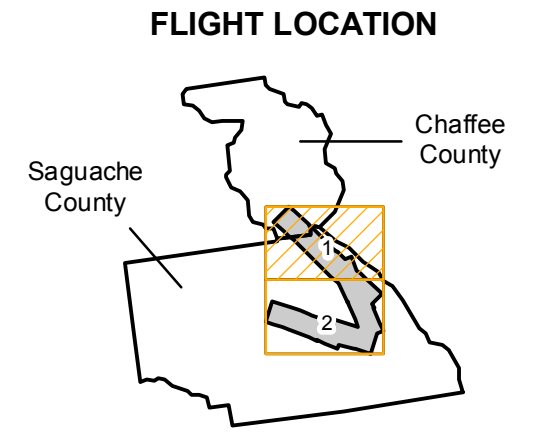


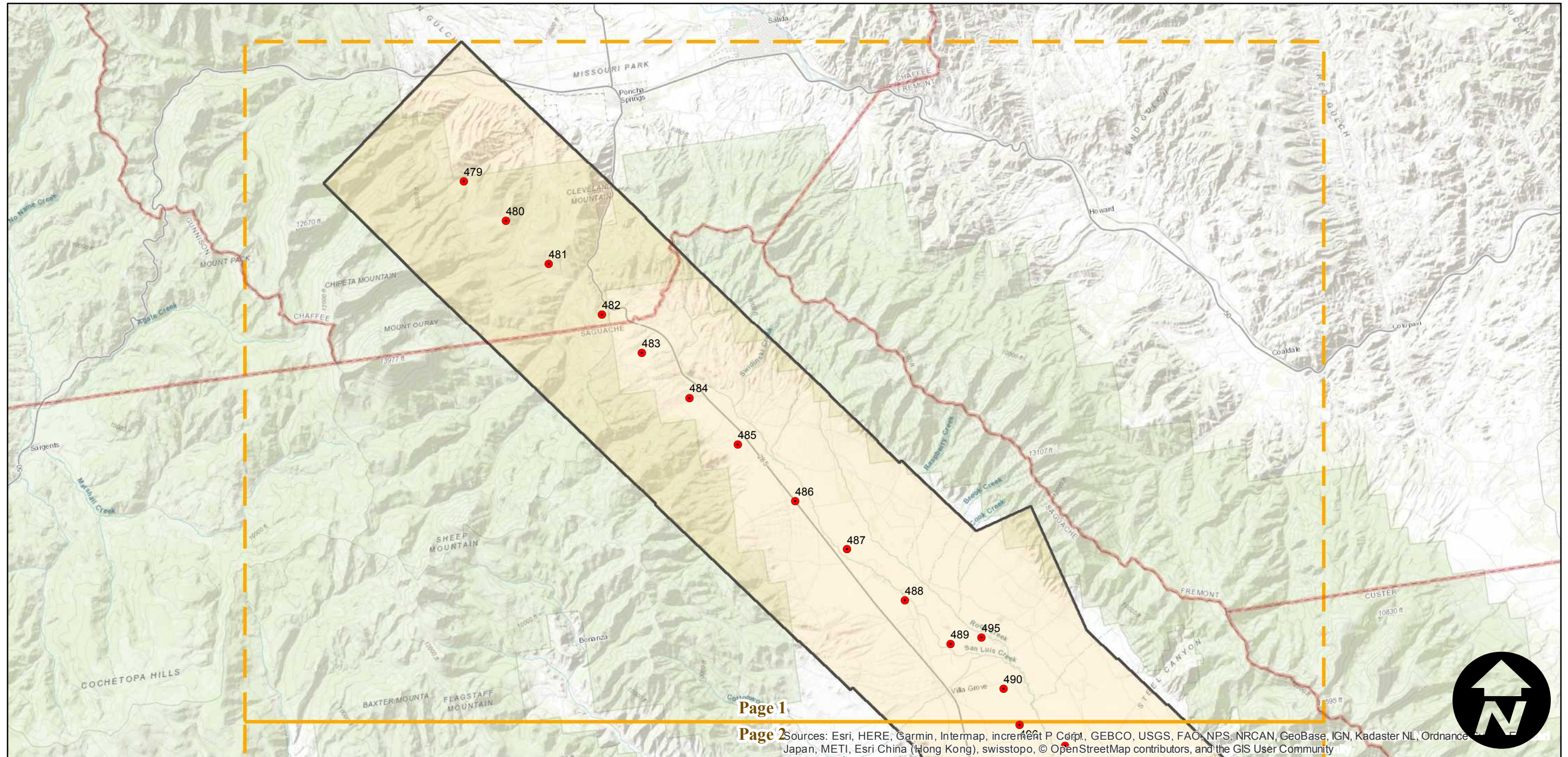
C-4110

Counties: Saguache, Chaffee (Colorado)
Flight date(s): 08-22-1936
Scale: 1:36,000
Overlap: 60%

Note: Saguache and San Luis Creek (from Rito Alto Creek to Cleveland Mountain near Poncha Springs). Four-frame composites. Imagery acquired January 2013.



Complete Metadata:
<https://www.library.ucsb.edu/src/airphotos/aerial-photography-information>



0 3 6 12 Miles

Index to Aerial Photography
Page 1 of 2

Scale of this index: 1:190,000

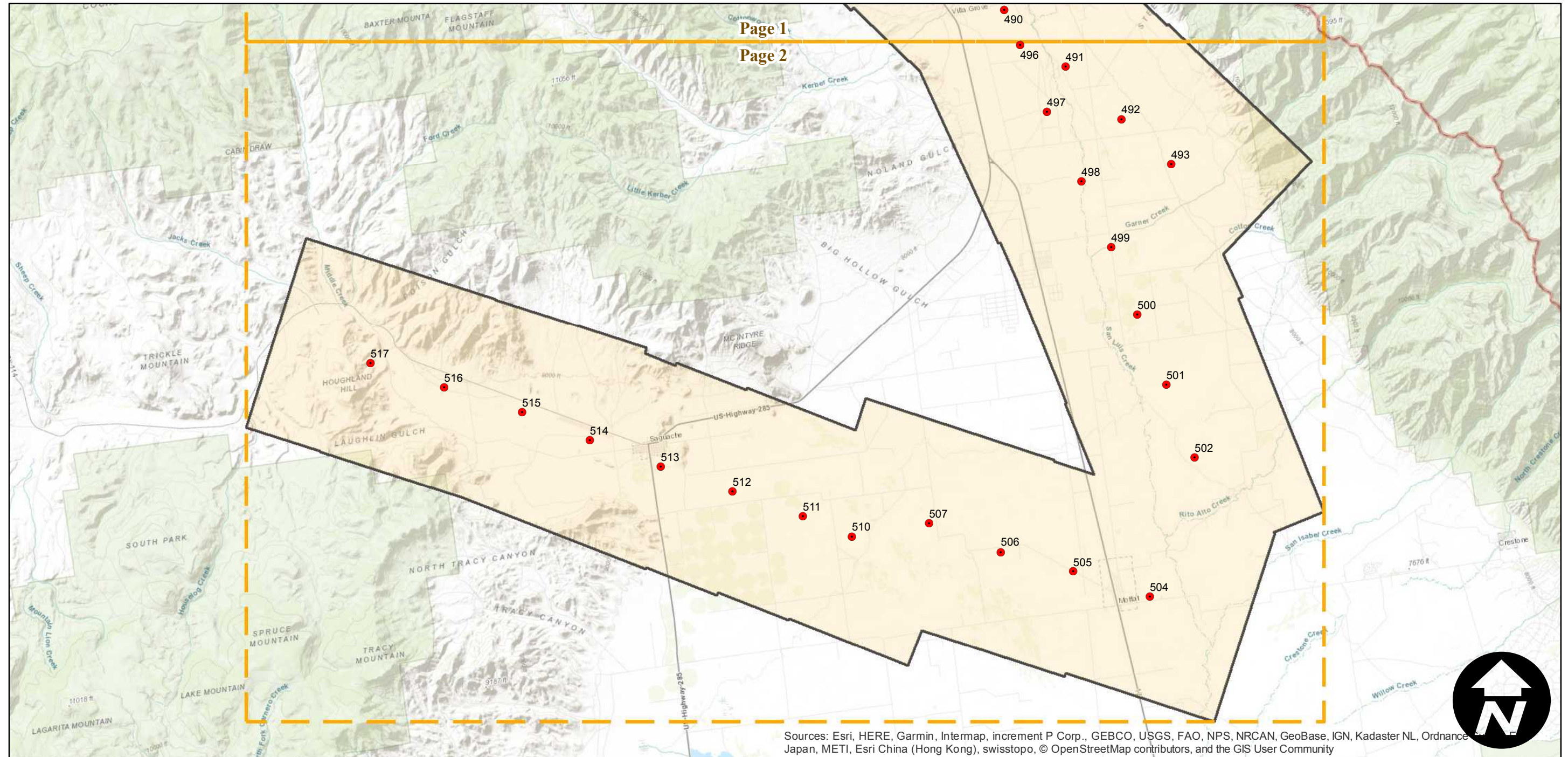
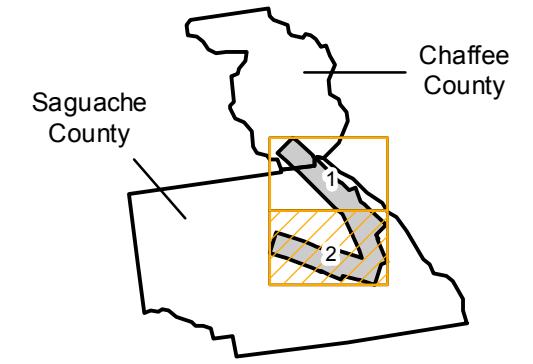
C-4110

Counties: Saguache, Chaffee (Colorado)
Flight date(s): 08-22-1936
Scale: 1:36,000
Overlap: 60%

Complete Metadata:
<https://www.library.ucsb.edu/src/airphotos/aerial-photography-information>

Note: Saguache and San Luis Creek (from Rito Alto Creek to Cleveland Mountain near Poncha Springs). Four-frame composites. Imagery acquired January 2013.

FLIGHT LOCATION



Sources: Esri, HERE, Garmin, Intermap, increment P Corp., GEBCO, USGS, FAO, NPS, NRCAN, GeoBase, IGN, Kadaster NL, Ordnance Survey, Esri China (Hong Kong), Swisstopo, © OpenStreetMap contributors, and the GIS User Community

0 3 6 12 Miles

Index to Aerial Photography
Page 2 of 2

Scale of this index: 1:190,000