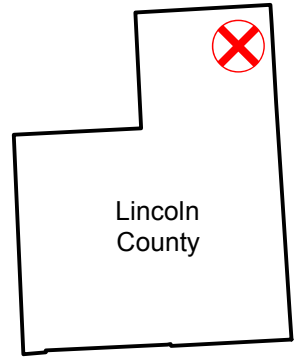


C-4109

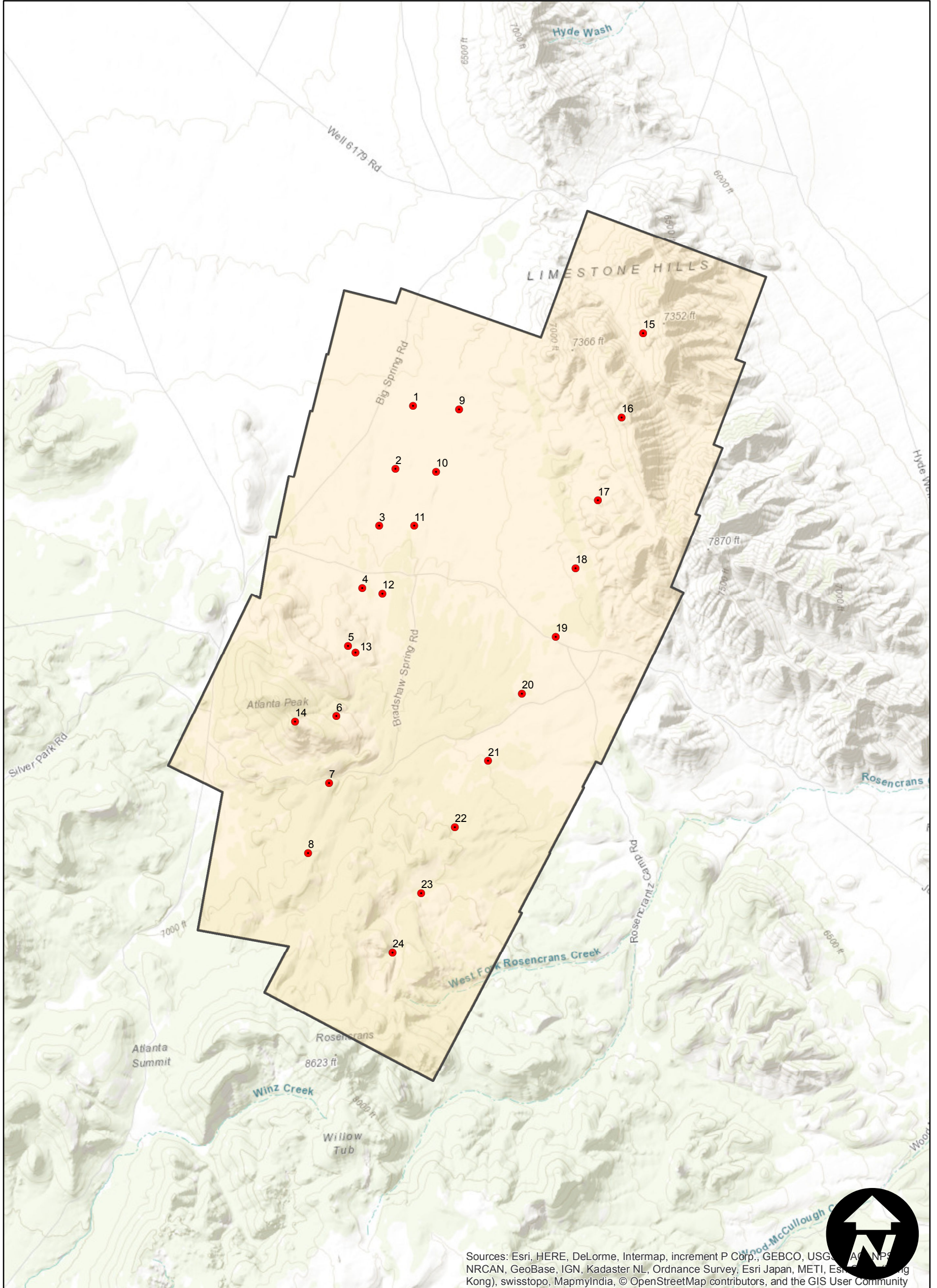
Counties: Lincoln (Nevada)
Flight date(s): 08-22-1936
Scale: 1:12,000
Overlap: 60%

Note: Limestone Hills to Atlanta Peak
(50 miles north of Pioche). Imagery
acquired January 2013. Nitrate
negatives scanned, July 2015.

FLIGHT LOCATION



Complete Metadata:
<https://www.library.ucsb.edu/src/airphotos/aerial-photography-information>



Sources: Esri, HERE, DeLorme, Intermap, increment P Corp., GEBCO, USGS, AeroGRID, IGN, NPS, NRCAN, GeoBase, IGN, Kadaster NL, Ordnance Survey, Esri Japan, METI, Esri (Switzerland), Swisstopo, MapmyIndia, © OpenStreetMap contributors, and the GIS User Community

0 0.5 1 2 Miles