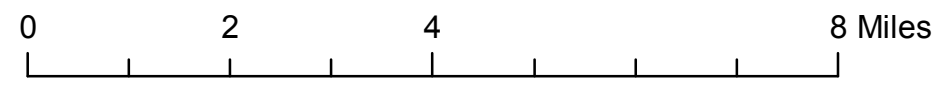
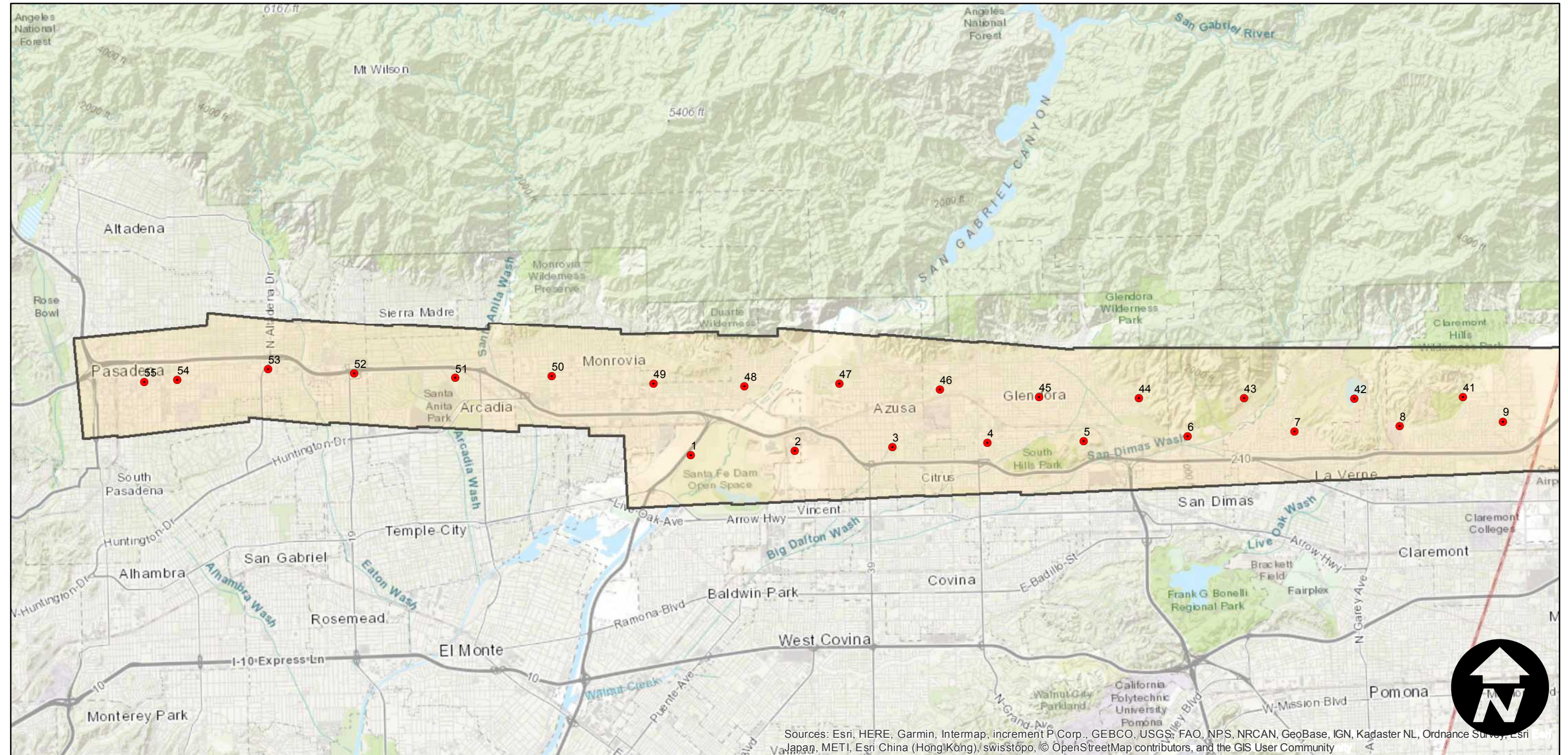
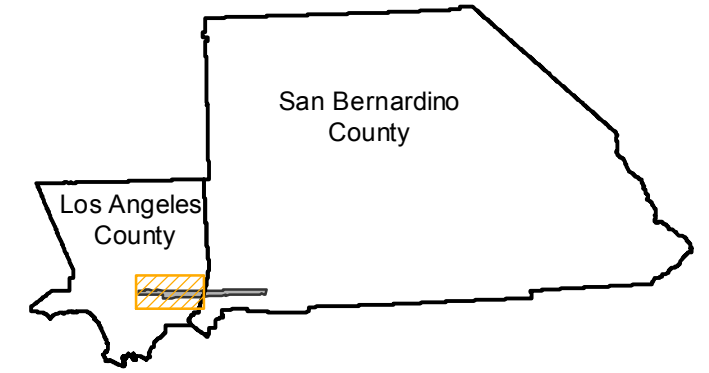


# C-4061

Counties: Los Angeles, San Bernardino  
Flight date(s): 06-11-1936  
Scale: 1:15,840  
Overlap: 40-60%

Note: Pasadena to San Bernardino. Imagery acquired, January 2013. Nitrate negatives scanned, July 2015.

## FLIGHT LOCATION



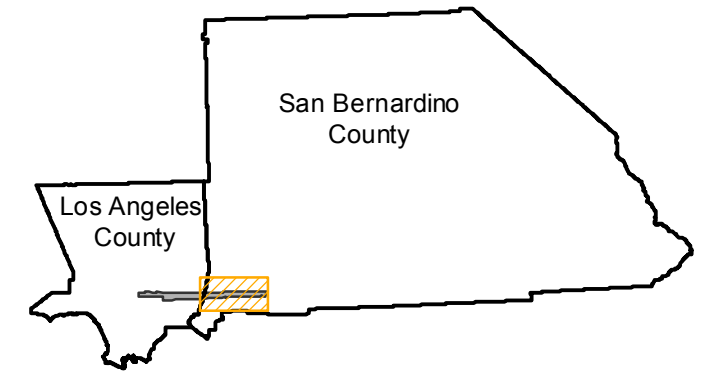
Sources: Esri, HERE, Garmin, Intermap, increment P Corp., GEBCO, USGS, FAO, NPS, NRCAN, GeoBase, IGN, Kadaster NL, Ordnance Survey, Esri Japan, METI, Esri China (Hong Kong), swisstopo, © OpenStreetMap contributors, and the GIS User Community

# C-4061

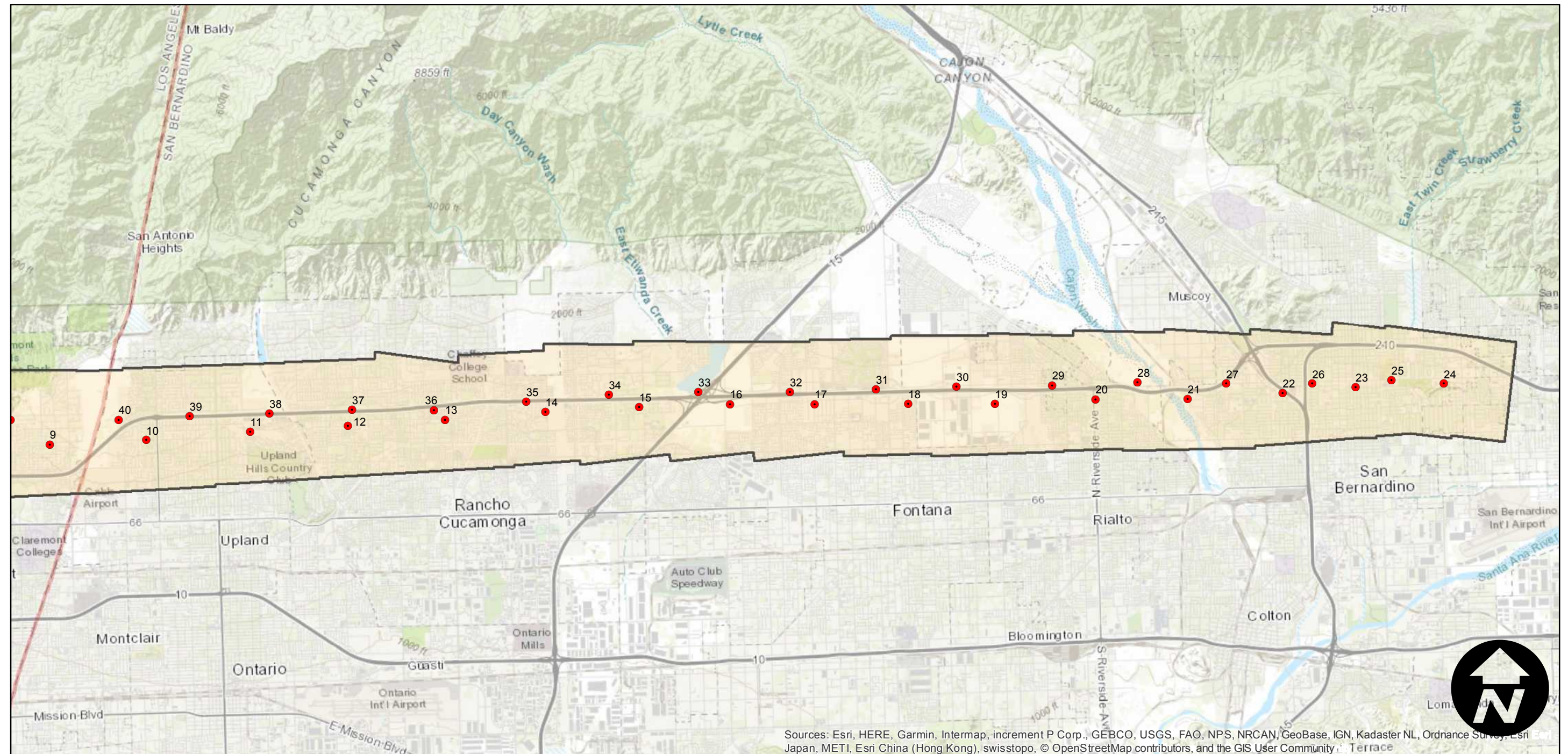
Counties: Los Angeles, San Bernardino  
Flight date(s): 06-11-1936  
Scale: 1:15,840  
Overlap: 40-60%

Note: Pasadena to San Bernardino. Imagery acquired, January 2013. Nitrate negatives scanned, July 2015.

## FLIGHT LOCATION



Complete Metadata:  
<https://www.library.ucsb.edu/src/airphotos/aerial-photography-information>



0 2 4 8 Miles

Scale of this index: 1:120,000